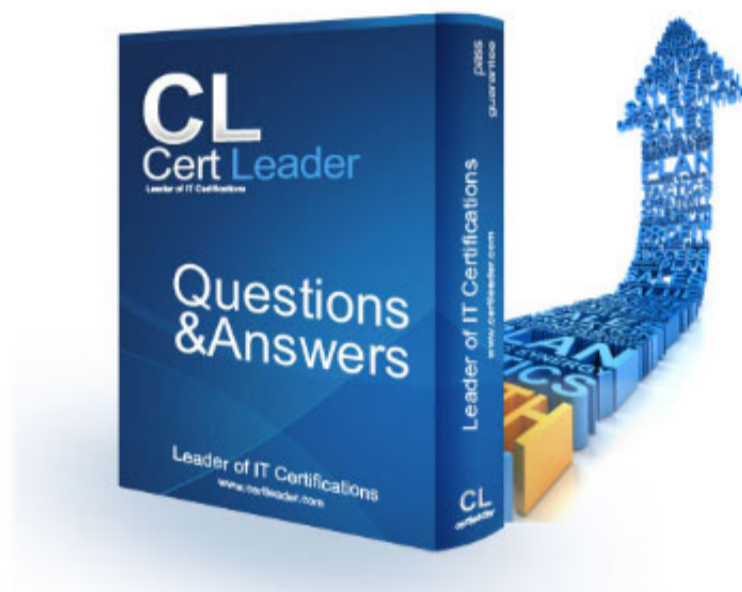


1Z0-518 Dumps

Oracle EBS R12.1 Receivables Essentials

<https://www.certleader.com/1Z0-518-dumps.html>



NEW QUESTION 1

Identify the two benefits of using Multi-Org Access Control. (Choose two.)

- A. View asset Information across multiple asset books.
- B. Restrict access to users based on their Organization assignments.
- C. Submit and view data across different Ledgers using a single responsibility.
- D. Enter Payables invoices for different Operating Units using a single responsibility.
- E. View Consolidated requisitions across Operating Units using a single responsibility.

Answer: DE

NEW QUESTION 2

You are Involved In a project to upgrade to Oracle E-Business Suite, Release 12. You need more Information about the upgrade processes and paths. Where would you find the upgrade guide for Oracle E-Business Suite?

- A. AppsNet
- B. Bug Database
- C. Technical Forums
- D. Metal ink Knowledge Base
- E. Oracle Technology Network
- F. Customer Knowledge Exchange

Answer: D

NEW QUESTION 3

ABC Corp. has determined its Accounting Key Flexfield structure for the Implementation of Oracle E-Business Suite Release 12. The Accounting Key Flexfield structure contains five Segments:

Company, Business Unit, Department, Account, and Product.

They have the following requirements:

- 1) The Department values should be based on the Business Units.
- 2) They want to produce a quarterly Balance Sheet for each Company.

Which three statements are true? (Choose three.)

- A. The Product Value Set is dependent on the Accounts.
- B. The Business Unit Value Set is defined as Independent.
- C. The Account Segment has a Value Set with no Validation.
- D. The Company Segment is qualified as the Balancing Segment.
- E. The Department Segment Is qualified as an Intercompany Segment.
- F. Cross-validation rules are required to enforce dependency of Departments on the Business Units.

Answer: BDF

NEW QUESTION 4

Several fields are required during manual Invoice entry. Which are the fields required at the header level?

- A. date, customer, source, type, GL date, legal entity
- B. date, legal entity, bill-to, source, type, class, remit-to
- C. terms, date, bill-to, source, legal entity, type, remit-to
- D. date, customer, source, type, General Ledger (GL) date, class
- E. date, source, class, type, GL date, legal entity, bill-to, terms, remit-to

Answer: E

NEW QUESTION 5

The client entered a miscellaneous receipt by mistake; it was posted to General Ledger.

Now the miscellaneous receipt needs to be reversed. Which method would you advise the client to use?

- A. Carry out a standard reversal of the miscellaneous receipt.
- B. Carry out a debit memo reversal of the miscellaneous receipt.
- C. Create a receivable activity adjustment for the reversal of the miscellaneous receipt.
- D. Create an adjustment in receivables for the reversal of the effect of the miscellaneous receipt.
- E. Create a journal entry in General Ledger to reverse the accounting impact created by the posting of the miscellaneous receipt.

Answer: B

NEW QUESTION 6

You are setting up Receivable Accounting Events in Subledger Accounting. Identify Event Entity.

- A. Invoices
- B. deposits
- C. guarantees
- D. transactions
- E. chargebacks

Answer: D

NEW QUESTION 7

You have just opened the Transactions form. Which field would you see on this form?

- A. company
- B. legal entity
- C. cost center
- D. operating unit

Answer: B

NEW QUESTION 8

How many data source views can you register for the Lines data source in Bill Presentment Architecture?

- A. five
- B. one
- C. nine
- D. seven

Answer: B

NEW QUESTION 9

Select four values that default from profile classes In Oracle Accounts Receivable. (Choose four.)

- A. currency
- B. legal entity
- C. payment terms
- D. statement cycle
- E. business purpose
- F. credit classification

Answer: ACDF

NEW QUESTION 10

To properly associate one transaction type with another In Receivables, you have to define transact/on types In a specific order. Identify the correct order.

- A. invoice, credit memo, debit memo
- B. Invoice, debit memo, credit memo
- C. credit memo, invoice, debit memo
- D. credit memo, debit memo, invoice
- E. debit memo, invoice, credit memo
- F. debit memo, credit memo, invoice

Answer: C

NEW QUESTION 10

Select two features regarding the completion of a successful customer merge in Oracle Receivables that support ongoing customer data cleansing efforts after go-live. (Choose two.)

- A. Customer merge activity can be reversed after the merge process.
- B. Bank details for the merge-from customer remains available after the merge process.
- C. Duplicate parties are re pointed to the surviving party after the customer merge process.
- D. Duplicate customers are repointed to the surviving customer after the customer merge process.
- E. Customer sites associated with the old customer or site are associated with the new customer or site after the customer merge process.
- F. Customer transactions or audit transactions details for the merge-from customer remain available for reprinting after the customer merge process.

Answer: DE

NEW QUESTION 13

Which three statements are true about accounting rules? (Choose three.)

- A. Accounting rules enable you to defer revenue.
- B. Accounting rules enable you to define fixed and variable rules to recognize revenue.
- C. Accounting rules enable you to define the number of periods and percentage of total revenue that you can record in each accounting period.
- D. Accounting rules enable you to define the number of periods and amount of invoice that you can bill your customer in each accounting period.

Answer: ABC

NEW QUESTION 16

Identify two correct statements about Oracle Receivables. (Choose two.)

- A. AutoAccounting is only used for the imported transactions.
- B. Errors in the AutoInvoice are sent to the Interface Exceptions table.
- C. Receivables transactions cannot be changed after they are printed.
- D. Receipt accounting can be transferred after the receipts are entered and saved.
- E. Transfer to General Ledger can transfer transaction accounting entries after the transactions are entered and saved.

Answer:

BD

NEW QUESTION 21

Horizon Real Estate Company usually Issues rent Invoices to its tenants at the beginning of every quarter. It recognizes the monthly rent revenue on the first day of each month. However, some tenants are required to make the monthly rent payments in two installments that is on the 15th and the fast day of the month. Which two statements are correct about the possible solutions for this business requirement? (Choose two.)

- A. Payment term can be set to defer the monthly rent revenue.
- B. Invoicing rules can be set to defer the monthly rent revenue.
- C. Accounting rules can be set to defer the monthly rent revenue.
- D. Payment term can be set to allow customers to make payments in two installments.
- E. Invoicing rules can be set to allow customers to make payments in two installments.
- F. Accounting rules can be set to allow customers to make payments in two installments.

Answer: CD

NEW QUESTION 23

Journal creation rules in Subledger Accounting are defined by event type and event class. Identify the event type associated with the event class of reverse.

- A. invoice
- B. receipts
- C. adjustment
- D. chargeback
- E. transactions
- F. credit memo
- G. bills receivable

Answer: B

NEW QUESTION 28

Select three features that Multi-Org provides to satisfy business needs. (Choose three.)

- A. secures user access to data
- B. supports fixed asset management
- C. procures from one Legal Entity and receives in another
- D. supports multiple language installations of Oracle Applications
- E. supports any number of business units within a single installation

Answer: ACE

NEW QUESTION 29

Identify two types of regions In Daily Business Intelligence, (Choose two.)

- A. menu
- B. table
- C. folder
- D. report
- E. graph

Answer: BE

NEW QUESTION 33

Company ABC is implementing Oracle User Management (OUM). It has decided to implement the Self Service and Approvals access control layer.

What are the three self-service registration tasks an end user can perform? (Choose three.)

- A. Reset passwords.
- B. Obtain new user accounts.
- C. Request deactivation of responsibility
- D. Request reports to be added to request set.
- E. Request additional access to the applications

Answer: ABE

NEW QUESTION 36

Event Types in Subledger Accounting Is a grouping of_____.

- A. Events
- B. Accounts
- C. Event Models
- D. Event Entitles
- E. Event Classes

Answer: E

NEW QUESTION 38

You are the Human Resources lead for the ERP implementation of ABC Corporation. You have defined the employees in Oracle Human Resources. Select three activities that utilize the employee record. (Choose three.)

- A. Approvals
- B. Asset assignment
- C. Organization creation
- D. Journal Entry creation
- E. AutoCreate Purchase Orders

Answer: ABE

NEW QUESTION 42

ABC Corp. has the following Organization Structure:

- 1) Legal Entity: A
- 2) Operating Units: B and C
- 3) Balancing Entities: 10, 20, and 30

Identify three correct statements regarding the Balancing Entity. (Choose three.)

- A. Each Balancing Entity must balance within itself.
- B. There can be multiple Balancing Entities within an Operating Unit.
- C. Balancing Entity is the lowest postable unit in the Chart of Accounts.
- D. Balancing Entities can be automatically secured at the Legal Entity level.
- E. Balancing Entities can be secured at the Operating Unit level through Security Rules.

Answer: ABE

NEW QUESTION 43

Identify two features of Oracle Workflow in Oracle E-Business Suite Release 12. (Choose two.)

- A. enhances data security
- B. helps you focus on managing individual business transactions
- C. has each activity in a workflow as a PL/SQL function or a notification or a subprocess
- D. can integrate business functions only between business processes within a single company
- E. can integrate business processes within an enterprise, as well as between different organizations and different systems

Answer: CE

NEW QUESTION 46

What are the four required fields when defining a request set? (Choose four.)

- A. Set
- B. Owner
- C. Set Code
- D. Application
- E. Description
- F. Active Date

Answer: ACDF

NEW QUESTION 49

Identify the four resources that Oracle Technology Network (OTN) provides. (Choose four.)

- A. sample codes
- B. Bug Database
- C. technical articles
- D. product downloads
- E. product documentation
- F. Applications Electronic Technical Reference Manuals (eTRM)

Answer: ACDE

NEW QUESTION 54

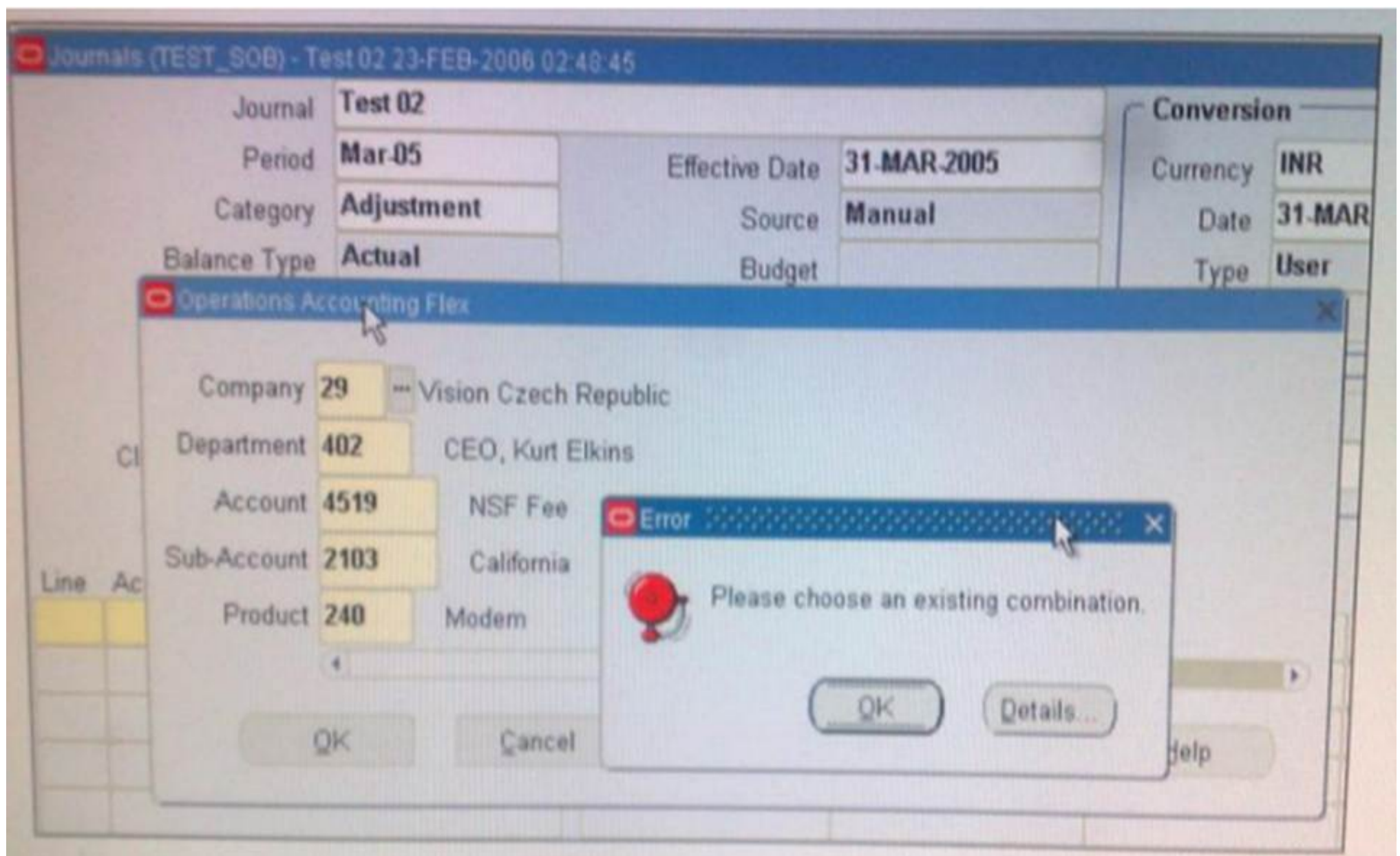
Which two statements are true regarding ownership of shared entities? (Choose two)

- A. Items is owned by Oracle Purchasing, whereas Locations is owned by Oracle Receivables,
- B. Suppliers is owned by Oracle Purchasing, whereas Units of Measure is owned by Oracle Inventory.
- C. Ledger is owned by Oracle General Ledger, whereas Locations is owned by Oracle Human Resources.
- D. Customers is owned by Oracle Human Resources, whereas Locations is owned by Oracle Receivables.
- E. Sales Force is owned by Oracle Order Management, whereas Employees is owned by Oracle Human Resources.

Answer: BC

NEW QUESTION 58

View the Exhibit.



While entering a journal in the Journals form, you enter a code combination of 29.402.4519.2103.240 in the five-segment Accounting Flexfield. However, you are unable to proceed after entering this account combination.

What could be the problem in the structure definition of the Accounting Flexfield?

- A. The "Freeze Rollup Groups" check box is selected.
- B. The "Allow Dynamic Inserts" check box is deselected.
- C. The "Freeze Flexfield Definition" check box is selected.
- D. The "Cross-Validate Segments" check box is selected.

Answer: B

NEW QUESTION 62

.....

Thank You for Trying Our Product

* 100% Pass or Money Back

All our products come with a 90-day Money Back Guarantee.

* One year free update

You can enjoy free update one year. 24x7 online support.

* Trusted by Millions

We currently serve more than 30,000,000 customers.

* Shop Securely

All transactions are protected by VeriSign!

100% Pass Your 1Z0-518 Exam with Our Prep Materials Via below:

<https://www.certleader.com/1Z0-518-dumps.html>