

# Microsoft

## Exam Questions AZ-801

Configuring Windows Server Hybrid Advanced Services



#### NEW QUESTION 1

- (Exam Topic 3)

You have five Azure virtual machines.

You need to collect performance data and Windows Event logs from the virtual machines. The data collected must be sent to an Azure Storage account.

What should you install on the virtual machines?

- A. the Azure Connected Machine agent
- B. the Azure Monitor agent
- C. the Dependency agent
- D. the Telegraf agent
- E. the Azure Diagnostics extension

**Answer:** E

#### Explanation:

Reference:

<https://docs.microsoft.com/en-us/azure/azure-monitor/agents/diagnostics-extension-overview>

#### NEW QUESTION 2

- (Exam Topic 3)

You have a failover cluster named Cluster1 that has the following configurations:

- Number of nodes: 6
- Quorum: Dynamic quorum
- Witness: File share, Dynamic witness

What is the maximum number of nodes that can fail simultaneously while maintaining quorum?

- A. 1
- B. 2
- C. 3
- D. 4
- E. 5

**Answer:** C

#### Explanation:

Note this question is asking about nodes failing ‘simultaneously’, not nodes failing one after the other.

With six nodes and one witness, there are seven votes. To maintain quorum there needs to be four votes available (four votes is the majority of seven). This means that a minimum of three nodes plus the witness need to remain online for the cluster to function. Therefore, the maximum number of simultaneous failures is three.

Reference:

<https://docs.microsoft.com/en-us/windows-server/storage/storage-spaces/understand-quorum>

#### NEW QUESTION 3

- (Exam Topic 3)

You have a three-node failover cluster.

You need to run pre-scripts and post-scripts when Cluster-Aware Updating (CAU) runs. The solution must minimize administrative effort.

What should you use?

- A. Scheduled tasks
- B. Run profiles
- C. Azure Functions
- D. Windows Server Update Services (WSUS)

**Answer:** B

#### NEW QUESTION 4

- (Exam Topic 3)

Your network contains an Active Directory Domain Services (AD DS) domain. The domain contains 20 Active Directory sites. All user management is performed from a central site.

You add users to a group.

You discover that group changes do NOT appear on a domain controller in a remote site. You need to identify whether the group changes appear on other domain controllers. What should you use?

- A. Microsoft Support and Recovery Assistant
- B. File Replication Service (FRS) Status Viewer
- C. Active Directory Replication Status Tool
- D. Active Directory Sites and Services

**Answer:** D

#### NEW QUESTION 5

- (Exam Topic 3)

You have a server that runs Windows Server. The server is configured to encrypt all incoming traffic by using a connection security rule.

You need to ensure that Server1 can respond to the unencrypted tracert commands initiated from computers on the same network.

What should you do from Windows Defender Firewall with Advanced Security?

- A. From the IPsec Settings, configure IPsec defaults.
- B. Create a new custom outbound rule that allows ICMPv4 protocol connections for all profiles.
- C. Change the Firewall state of the Private profile to Off.
- D. From the IPsec Settings, configure IPsec exemptions.

Answer: D

NEW QUESTION 6

- (Exam Topic 3)

Your network contains an Active Directory Domain Services (AD DS) domain. The domain contains two servers named Server1 and Server2 that run Windows Server.

You need to ensure that you can use the Computer Management console to manage Server2. The solution must use the principle of least privilege.

Which two Windows Defender Firewall with Advanced Security rules should you enable on Server2? Each correct answer presents part of the solution.

NOTE: Each correct selection is worth one point.

- A. the COM+ Network Access (DCOM-In) rule
- B. all the rules in the Remote Event Log Management group
- C. the Windows Management Instrumentation (WMI-In) rule
- D. the COM+ Remote Administration (DCOM-In) rule
- E. the Windows Management Instrumentation (DCOM-In) rule

Answer: AB

Explanation:

Reference:

<https://docs.microsoft.com/en-us/windows-server/administration/server-manager/configure-remote-management>

NEW QUESTION 7

- (Exam Topic 3)

You have five Azure virtual machines. You have a dedicated Azure Storage account to collect performance data. You need to send the collected data directly to the Azure Storage account. What should you install on the virtual machines?

- A. the Telegraf agent
- B. the Azure Monitor agent
- C. the Dependency agent
- D. the Azure Diagnostics extension
- E. the Azure Connected Machine agent

Answer: D

NEW QUESTION 8

- (Exam Topic 3)

You have a server that runs Windows Server.

You plan to back up the server to an Azure Recovery Services vault once per week starting on the next Saturday.

You need to schedule the weekly backup and perform the initial backup as soon as possible.

In which order should you perform the actions? To answer, move all actions from the list of actions to the answer area and arrange them in the correct order.

Actions

Run the Register Server Wizard.

From Microsoft Azure Backup, run the Schedule Backup Wizard.

From Microsoft Azure Backup, run the Back Up Now Wizard.

Download the Microsoft Azure Recovery Services (MARS) agent and the Vault Credentials file.

Run the Microsoft Azure Recovery Services Agent Setup Wizard.

Answer Area

- A. Mastered
- B. Not Mastered

Answer: A

Explanation:

Text Description automatically generated with medium confidence

Reference:

<https://docs.microsoft.com/en-us/azure/backup/install-mars-agent#download-the-mars-agent> <https://docs.microsoft.com/en-us/azure/backup/backup-windows-with-mars-agent>

NEW QUESTION 9

- (Exam Topic 3)

You have an on-premises server named Served that runs Windows Server. You have an Azure subscription. You plan to back up the files and folders on Server1 to Azure by using Azure Backup. You need to define how long the backups will be retained. What should you use to configure the retention?

- A. Backup center
- B. Windows Server Backup
- C. the Microsoft Azure Recovery Services (MARS) agent
- D. a Recovery Services vault

Answer: B

NEW QUESTION 10

- (Exam Topic 3)  
Your company uses Storage Spaces Direct.  
You need to view the available storage in a Storage Space Direct storage pool. What should you use?

- A. System Configuration
- B. File Server Resource Manager (FSRM)
- C. the Get-ScorageFileServer cmdlet
- D. Failover Cluster Manager

Answer: D

**Explanation:**  
If Failover Cluster Manager, select the Storage Space Direct storage pool. The information displayed in the main window includes the free space and used space.

NEW QUESTION 10

- (Exam Topic 3)  
You have an Azure subscription that contains an Azure Recovery Services vault. You have an on-premises physical server that runs Windows Server.  
You need to back up the server daily to Azure.  
Which three actions should you perform in sequence? To answer, move the appropriate actions from the list of actions to the answer area and arrange them in the correct order.

Actions	Answer Area
On Server1, install and register the Azure Connected Machine agent.	
Schedule a backup.	
On Server1, install and register the Azure Site Recovery Mobility service agent.	
Download the Vault Credentials file.	
Install and register the Microsoft Azure Recovery Services (MARS) agent.	
Create a recovery plan.	

- A. Mastered
- B. Not Mastered

Answer: A

**Explanation:**  
Graphical user interface, text, application Description automatically generated  
Reference:  
<https://docs.microsoft.com/en-us/azure/backup/tutorial-backup-windows-server-to-azure>

NEW QUESTION 14

- (Exam Topic 3)  
You have an Azure Active Directory Domain Services (Azure AD DS) domain named aadds.contoso.com. You have an Azure virtual network named Vnet1. Vnet1 contains two virtual machines named VM1 and VM2 that run Windows Server. VMI and VM2 are joined to aadds.contoso.com.  
You create a new Azure virtual network named Vnet2. You add a new server named VM3 to Vnet2. When you attempt to join VM3 to aadds.contoso.com, you get an error message that the domain cannot be found.  
You need to ensure that you can join VM3 to aadds.contoso.com.

#### Answer Area

Network configuration:

- Add a subnet to Vnet1.
- Add a subnet to Vnet2.
- Add a private endpoint to Vnet2.
- Configure virtual network peering between Vnet1 and Vnet2.

DNS configuration:

- Add a custom DNS server to Vnet1.
- Add a custom DNS server to Vnet2.
- Create an Azure private DNS zone named aadds.contoso.com.
- Add a virtual network link to an existing Azure private DNS zone.

- A. Mastered
- B. Not Mastered

**Answer:** A

**Explanation:**

#### Answer Area

Network configuration:

- Add a subnet to Vnet1.
- Add a subnet to Vnet2.
- Add a private endpoint to Vnet2.
- Configure virtual network peering between Vnet1 and Vnet2.

DNS configuration:

- Add a custom DNS server to Vnet1.
- Add a custom DNS server to Vnet2.
- Create an Azure private DNS zone named aadds.contoso.com.
- Add a virtual network link to an existing Azure private DNS zone.

#### NEW QUESTION 16

- (Exam Topic 3)

You have an Azure virtual machine named VM1. Crash dumps for a process named Process1 are enabled for VM1.

When process1.exe on VM1 crashes, a technician must access the memory dump files on the virtual machine. The technician must be prevented from accessing the virtual machine.

To what should you provide the technician access?

- A. an Azure file share
- B. an Azure Log Analytics workspace
- C. an Azure Blob Storage container
- D. a managed disk

**Answer:** C

**Explanation:**

Reference:

<https://docs.microsoft.com/en-us/azure/azure-monitor/agents/diagnostics-extension-overview>

#### NEW QUESTION 17

- (Exam Topic 3)

Your network contains a single-domain Active Directory Domain Services (AD DS) forest named contoso.com. The functional level of the forest is Windows Server 2012 R2. All domain controllers run Windows Server 2012 R2.

Sysvol replicates by using the File Replication Service (FRS).

You plan to replace the existing domain controllers with new domain controllers that will run Windows Server 2022.

You need to ensure that you can add the first domain controller that runs Windows Server 2022. Solution; You raise the domain and forest functional levels.

Does this meet the goal?

- A. Yes
- B. No

**Answer:** B

#### NEW QUESTION 19

- (Exam Topic 3)

You have a failover cluster named Cluster1 that contains three nodes.

You plan to add two file server cluster roles named File1 and File2 to Cluster1. File1 will use the File Server for general use role. File2 will use the Scale-Out File Server for application data role.



What is the maximum number of nodes for File1 and File2 that can concurrently serve client connections? To answer, select the appropriate options in the answer area.  
NOTE: Each correct selection is worth one point.

File1:

1

2

3

File2:

1

2

3

- A. Mastered
- B. Not Mastered

Answer: A

**Explanation:**  
Graphical user interface, application Description automatically generated  
Reference:  
<https://docs.microsoft.com/en-us/windows-server/failover-clustering/sofs-overview>

NEW QUESTION 20

- (Exam Topic 3)  
Your network contains an Active Directory Domain Service (AD DS) domain named contoso.com. The domain contains three domain controllers named DC1, DC2, and DC3.  
You connect a Microsoft Defender or identity instances to the domain.  
You need to onboard all the domain controllers to Defender for identity. What should you run the domain controllers?

- A. AzureConnectedMachineAgent,wsl
- B. MARAgentInstaller.exe
- C. Azure ATP Sensor setup.exe
- D. MASetup-AMD64.exe

Answer: C

NEW QUESTION 21

- (Exam Topic 3)  
Your network contains an Active Directory Domain Services (AD DS) domain that has the Active Directory Recycle Bin enabled. All domain controllers are backed up daily.  
You accidentally remove all the users from a domain group.  
You need to get a list of the users that were previously in the group.  
Which four actions should you perform in sequence from a domain controller? To answer, move the appropriate actions from the list of actions to the answer area and arrange them in the correct order.

Action
Mount Active Directory to port 51389.
View the membership of the group.
Restore the system state to an alternate location.
From the Deleted Objects container in Active Directory Administrative Center, run the Restore task.
From Active Directory Users and Computers, change the domain controller to localhost:51389.
Restore the group from the Active Directory Recycle Bin.

Answer Area

- A. Mastered
- B. Not Mastered

Answer: A

Explanation:

Graphical user interface, text, table Description automatically generated with medium confidence

Reference:

<http://sysadmindoc.blogspot.com/2018/10/mount-active-directory-database-from.html>

NEW QUESTION 26

- (Exam Topic 2)

Which domain controller should be online to meet the technical requirements for DC4?

- A. DC1
- B. DC2
- C. DC3

Answer: B

NEW QUESTION 29

- (Exam Topic 3)

You have an Azure virtual machine named VM1 that runs Windows Server. VM1 has boot diagnostics configured to use a managed storage account.

You are troubleshooting connectivity issue on VM1.

You need to run a PowerShell cmdlet on VM1 by using the Azure Serial Console.

Which four actions should you perform in sequence? To answer, move the appropriate actions from the list of actions to the answer area and arrange them in the correct order.

Actions

- From the Azure portal, configure the Boot diagnostics settings for VM1 to use a custom storage account.
- From the Azure portal, open the Run command blade.
- From the Azure portal, open the Serial console blade of VM1.
- From the Azure portal, enable just in time (JIT) VM access to VM1.
- From the Serial console, run `ch -si 1` and sign in by using a local account.
- From the Serial console, run `cmd`.

Answer Area

- A. Mastered
- B. Not Mastered

Answer: A

Explanation:

Graphical user interface, text, application, email Description automatically generated

Reference:

<https://docs.microsoft.com/en-us/troubleshoot/azure/virtual-machines/serial-console-overview> <https://docs.microsoft.com/en-us/troubleshoot/azure/virtual-machines/serial-console-windows>

NEW QUESTION 31

- (Exam Topic 3)

Your network contains an Active Directory Domain Services (AD DS) domain. The domain contains servers that run Windows Server as shown in the following table.

Name	IP address
Server1	172.16.10.10
Server2	172.16.20.50
Server3	172.16.30.80

Server1 has the connection security rules shown in the following table.

Answer Area

Statements	Yes	No
Server1 can communicate with Server2 successfully.	<input type="radio"/>	<input type="radio"/>
Server2 can communicate with Server3 successfully.	<input type="radio"/>	<input type="radio"/>
Server3 can communicate with Server2 successfully.	<input type="radio"/>	<input type="radio"/>

- A. Mastered
- B. Not Mastered

Answer: A

Explanation:

Answer Area

Statements

Server1 can communicate with Server2 successfully.

Server2 can communicate with Server3 successfully.

Server3 can communicate with Server2 successfully.

Yes

No

☒

☐

☐

☒

☒

☐

NEW QUESTION 36

- (Exam Topic 3)

You have three servers named Server1, Server2, Server3 that run Windows Server and have the Hyper-V server role installed. You plan to create a hyper-converged cluster to host Hyper-V virtual machines. You need to ensure that you can store virtual machines in Storage Spaces Direct. Which three actions should you perform in sequence? To answer, move the appropriate actions from the list of actions to the answer area and arrange them in the correct order.

Actions

Create a failover cluster.

Create a Distributed File System (DFS) namespace.

Enable Storage Spaces Direct.

Create a volume.

Add a Scale-Out File Server for application role.

Create a file share.

Answer Area

- A. Mastered
- B. Not Mastered

Answer: A

Explanation:

Graphical user interface, text, application Description automatically generated  
Reference:  
<https://docs.microsoft.com/en-us/system-center/vmm/s2d-hyper-converged?view=sc-vmm-2019>

NEW QUESTION 39

- (Exam Topic 3)

You have an on-premises network and an Azure virtual network. You establish a Site-to-Site VPN connection from the on-premises network to the Azure virtual network, but the connection frequently disconnects. You need to debug the IPsec tunnel from Azure. Which Azure VPN Gateway diagnostic log should you review?

- A. GatewayDiagnosticLog
- B. RouteDiagnosticLog
- C. IKEDiagnosticLog
- D. TunnelDiagnosticLog

Answer: D

Explanation:

Reference:  
<https://docs.microsoft.com/en-us/azure/vpn-gateway/troubleshoot-vpn-with-azure-diagnostics>

NEW QUESTION 42

- (Exam Topic 3)

You have two Azure virtual machines named VM1 and VM2. VM1 is backed up to an Azure Recovery Services vault daily and retains backups for 30 days. You need to restore an individual file named C:\Data\Important.docx from VM1 to VM2. The solution must minimize administrative effort. Which four actions should you perform in sequence? To answer, move the appropriate actions from the list of actions to the answer area and arrange them in the correct order.



Actions

Unmount the disks.

Download the file recovery script for VM1.

Copy the file by using Azure Storage Explorer.

Copy the file by using File Explorer.

Restore the file by using Windows Server Backup.

Run the file recovery script on VM2.

Answer Area

- A. Mastered  
B. Not Mastered

Answer: A

**Explanation:**  
Text Description automatically generated  
Reference:  
<https://docs.microsoft.com/en-us/azure/backup/backup-azure-restore-files-from-vm>

NEW QUESTION 43

- (Exam Topic 3)  
Your network contains an Active Directory Domain Services (AD DS) domain. The domain contains a failover cluster named Cluster1.  
You need to configure Cluster-Aware Updating (CAU) on the cluster by using Windows Admin Center (WAC).  
Which three actions should you perform in sequence? To answer, move the appropriate actions from the list of actions to the answer area and arrange them in the correct order.

Actions

Enable CredSSP.

Add Cluster1 to WAC.

Add the Cluster-Aware Updating role.

Add a group managed service account (gMSA).

Add a WAC gateway.

Answer Area

- A. Mastered  
B. Not Mastered

Answer: A

**Explanation:**

Actions

Enable CredSSP.

Add Cluster1 to WAC.

Add the Cluster-Aware Updating role.

Add a group managed service account (gMSA).

Add a WAC gateway.

Answer Area

Add a group managed service account (gMSA).

Add Cluster1 to WAC.

Enable CredSSP.

NEW QUESTION 46

- (Exam Topic 3)  
Note: This question is part of a series of questions that present the same scenario. Each question in the series contains a unique solution that might meet the stated goals. Some question sets might have more than one correct solution, while others might not have a correct solution.  
After you answer a question in this section, you will NOT be able to return to it. As a result, these questions will not appear in the review screen.  
Your network contains a single-domain Active Directory Domain Services (AD DS) forest named contoso.com. The functional level of the forest is Windows Server 2012 R2. All domain controllers run Windows Server 2012 R2.  
Sysvol replicates by using the File Replication Service (FRS).  
You plan to replace the existing domain controllers with new domain controllers that will run Windows Server 2022.  
You need to ensure that you can add the first domain controller that runs Windows Server 2022. Solution: You migrate sysvol from FRS to Distributed File System (DFS) Replication.  
Does this meet the goal?

- A. Yes  
B. No

**Answer:** A

**Explanation:**

Reference:

<https://www.rebeladmin.com/2021/09/step-by-step-guide-active-directory-migration-from-windows-server-2008>

#### NEW QUESTION 47

- (Exam Topic 3)

You have two servers named Server1 and Server2 that run Windows Server. Both servers have the Hyper-V server role installed.

Server1 hosts three virtual machines named VM1, VM2, and VM3. The virtual machines replicate to Server2. Server1 experiences a hardware failure.

You need to bring VM1, VM2, and VM3 back online as soon as possible.

From the Hyper-V Manager console on Server2, what should you run for each virtual machine?

- A. Start
- B. Move
- C. Unplanned Failover
- D. Planned Failover

**Answer:** C

**Explanation:**

Reference:

<https://docs.microsoft.com/en-us/windows-server/virtualization/hyper-v/manage/set-up-hyper-v-replica>

#### NEW QUESTION 51

- (Exam Topic 3)

You have an Azure virtual machine named VM1 that has the Web Server (IIS) server role installed. VM1 hosts a critical line-of-business (LOB) application.

After the security team at your company deploys a new security baseline to VM1, users begin reporting that the application is unresponsive.

You suspect that the security baseline has caused networking issues. You need to perform a network trace on VM1.

What should you do?

- A. From VM1, run netsh.
- B. From Performance Monitor on VM1, create a Data Collector Set.
- C. From the Azure portal, configure the Diagnostics settings for VM1.
- D. From the Azure portal, configure the Performance diagnostics settings for VM1.

**Answer:** D

**Explanation:**

Reference:

<https://docs.microsoft.com/en-us/troubleshoot/azure/virtual-machines/performance-diagnostics>

#### NEW QUESTION 54

- (Exam Topic 3)

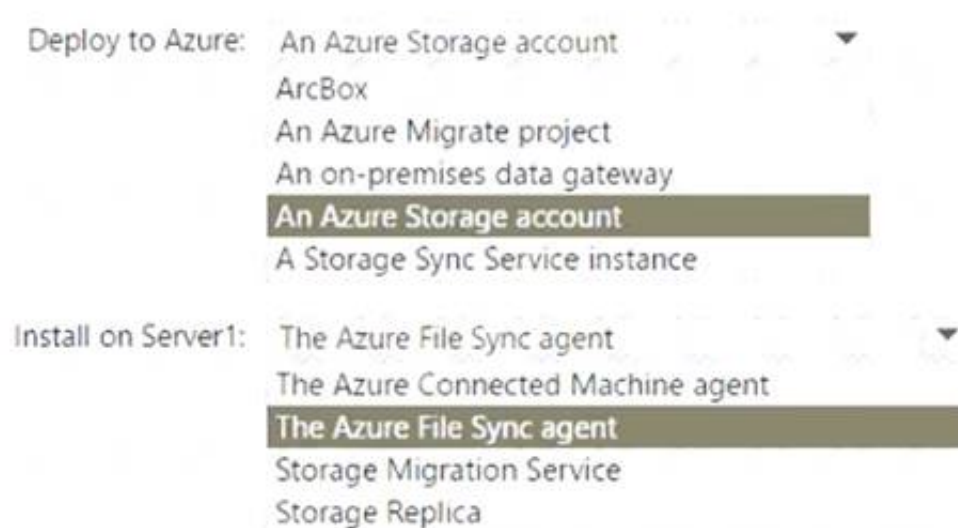
You have an on-premises server that runs Windows Server and contains a folder named Folder1. Folder1 contains 50 GB of files.

You have an Azure subscription that contains an Azure Files share named share1. You need to migrate the data in Folder1 to share1.

What should you do? To answer, select the appropriate options in the answer area.

NOTE: Each correct selection is worth one point.

**Answer Area**

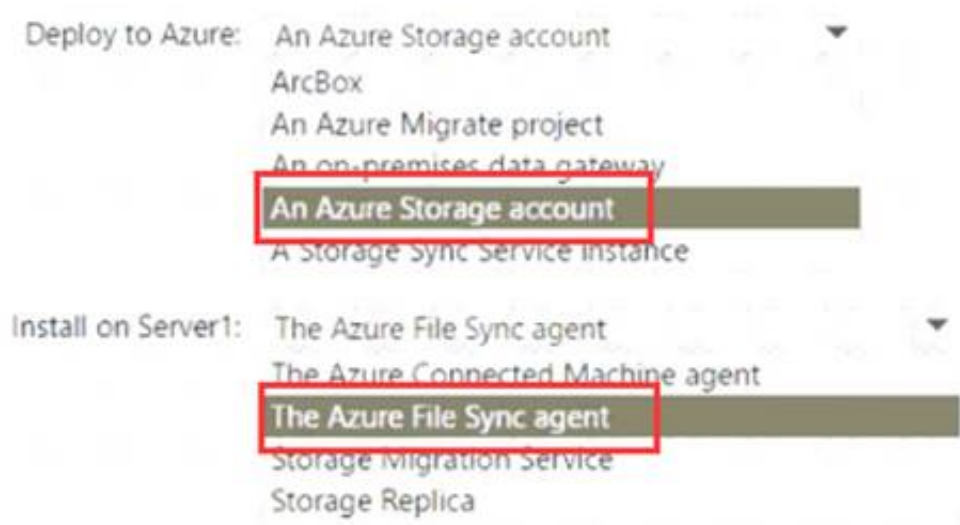


- A. Mastered
- B. Not Mastered

**Answer:** A

**Explanation:**

**Answer Area**



**NEW QUESTION 57**

- (Exam Topic 3)

You have two Azure virtual networks named Vnet1 and Vnet2.

You have a Windows 10 device named Client1 that connects to Vnet1 by using a Point-to-Site (P2S) IKEv2 VPN.

You implement virtual network peering between Vnet1 and Vnet2. Vnet1 allows gateway transit Vnet2 can use the remote gateway.

You discover that Client1 cannot communicate with Vnet2. You need to ensure that Client1 can communicate with Vnet2. Solution: You enable BGP on the gateway of Vnet1.

Does this meet the goal?

- A. Yes
- B. No

**Answer: B**

**NEW QUESTION 59**

- (Exam Topic 3)

Your network contains an Active Directory Domain Services (AD DS) domain. The domain contains a server named Server1 that runs Windows Server.

You run `Get-BitLockerVolume -MountPoint C:\ | ?{ $_.LockStatus -eq 'Unlocked' }`, which generates the following output.

```

ComputerName      : SERVER1
MountPoint        : C:
EncryptionMethod   : None
AutoUnlockEnabled : 
AutoUnlockKeyStored : 
MetadataVersion   : 0
VolumeStatus      : FullyDecrypted
ProtectionStatus   : Off
LockStatus         : Unlocked
    
```

**Answer Area**

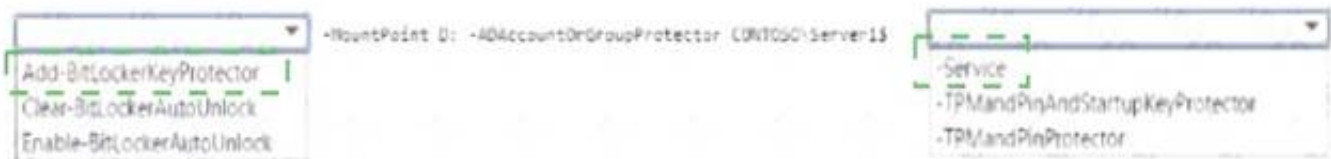


- A. Mastered
- B. Not Mastered

**Answer: A**

**Explanation:**

**Answer Area**



**NEW QUESTION 61**

- (Exam Topic 3)

Your network contains an Active Directory Domain Services (AD DS) domain. The domain contains a print server named Server1. All printers are deployed to users by using a Group Policy Object (GPO) named GPO1.

You deploy a new server named Server2.

You need to decommission Server1. The solution must meet the following requirements:

- Migrate the shared printers to Server2 by using the Printer Migration Wizard.

- > Ensure that the users use the printers on Server2.
- > Minimize downtime for the users.

Which four actions should you perform in sequence? To answer, move the appropriate actions from the list of actions to the answer area and arrange them in the correct order.

#### Actions

Decommission Server1.

Import the printers on Server2.

Deploy Windows Server Hybrid Cloud Print.

Export the printers on Server1.

Update the service principal name (SPN) of each printer.

Modify GPO1.

#### Answer Area

- A. Mastered  
B. Not Mastered

**Answer:** A

#### Explanation:

Graphical user interface, text, application, email Description automatically generated

Reference:

<https://docs.microsoft.com/en-us/archive/blogs/canitpro/step-by-step-migrating-print-servers-from-windows-ser>

#### NEW QUESTION 66

- (Exam Topic 3)

You deploy Azure Migrate to an on-premises network.

You have an on-premises physical server named Server1 that runs Windows Server and has the following configuration.

\* Operating system disk 600 GB

\* Data disc 3 TB

\* NIC Teaming: Enabled

\* Mobility service: installed

\* Windows Firewall: Enabled

\* Microsoft Defender Antivirus: Enabled

You need to ensure that you can use Azure Migrate to migrate Server1. Solution: You shrink the data disk on Server1.

Does this meet the goal?

- A. Yes  
B. No

**Answer:** B

#### NEW QUESTION 71

- (Exam Topic 3)

You have a failover cluster named Cluster1 that hosts an application named App1.

The General tab in App1 Properties is shown in the General exhibit (Click the General Tab) The failover tab in App1 Properties is shown in the failover exhibit (Click the Failover tab.)

Server 1 shuts down unexpectedly.

You need to ensure that when you start Server 1. App1 continues to run on Server2

Solution: From the General settings, you increase the priority of Server2 in the Preferred Owners list. Does this meet the goal?

- A. Yes  
B. NO

**Answer:** B

#### NEW QUESTION 75

- (Exam Topic 3)

You have a server named Server1 that runs Windows Server and has the Hyper-V server role installed. You have a Hyper-V failover cluster named Cluster1. All servers are members of the same domain.

You need to ensure that you use Hyper-V Replica with Kerberos authentication on the default port to replicate virtual machines from Cluster1 to Server1.

What should you do on Server1?

- A. Add primary servers to the Hyper-V Replica Broker configuration.  
B. From Hyper-V Settings, select Enable incoming and outgoing live migrations  
C. From Windows Defender Firewall with Advanced Security, enable the Hyper-V Replica HTTPS Listener (TCP-In) rule.  
D. From Windows Defender Firewall with Advanced Security, enable the Hyper-V Replica HTTP Listener (TCP-In) rule.

**Answer:** D

#### Explanation:

Reference:



<https://docs.microsoft.com/en-us/windows-server/virtualization/hyper-v/manage/set-up-hyper-v-replica>

## NEW QUESTION 77

- (Exam Topic 3)

Note: This question is part of a series of questions that present the same scenario. Each question in the series contains a unique solution that might meet the stated goals. Some question sets might have more than one correct solution, while others might not have a correct solution.

After you answer a question in this section, you will NOT be able to return to it. As a result, these questions will not appear in the review screen.

You have a failover cluster named Cluster1 that hosts an application named App1.

The General tab in App1 Properties is shown in the General exhibit. (Click the General tab.)



**App1 Properties**

General Failover

 App1

Name:  
App1

Preferred Owners  
Select the preferred owners for this clustered role. Use the buttons to list them in order from most preferred at the top to least preferred at the bottom.

☐ Server1  
☐ Server2

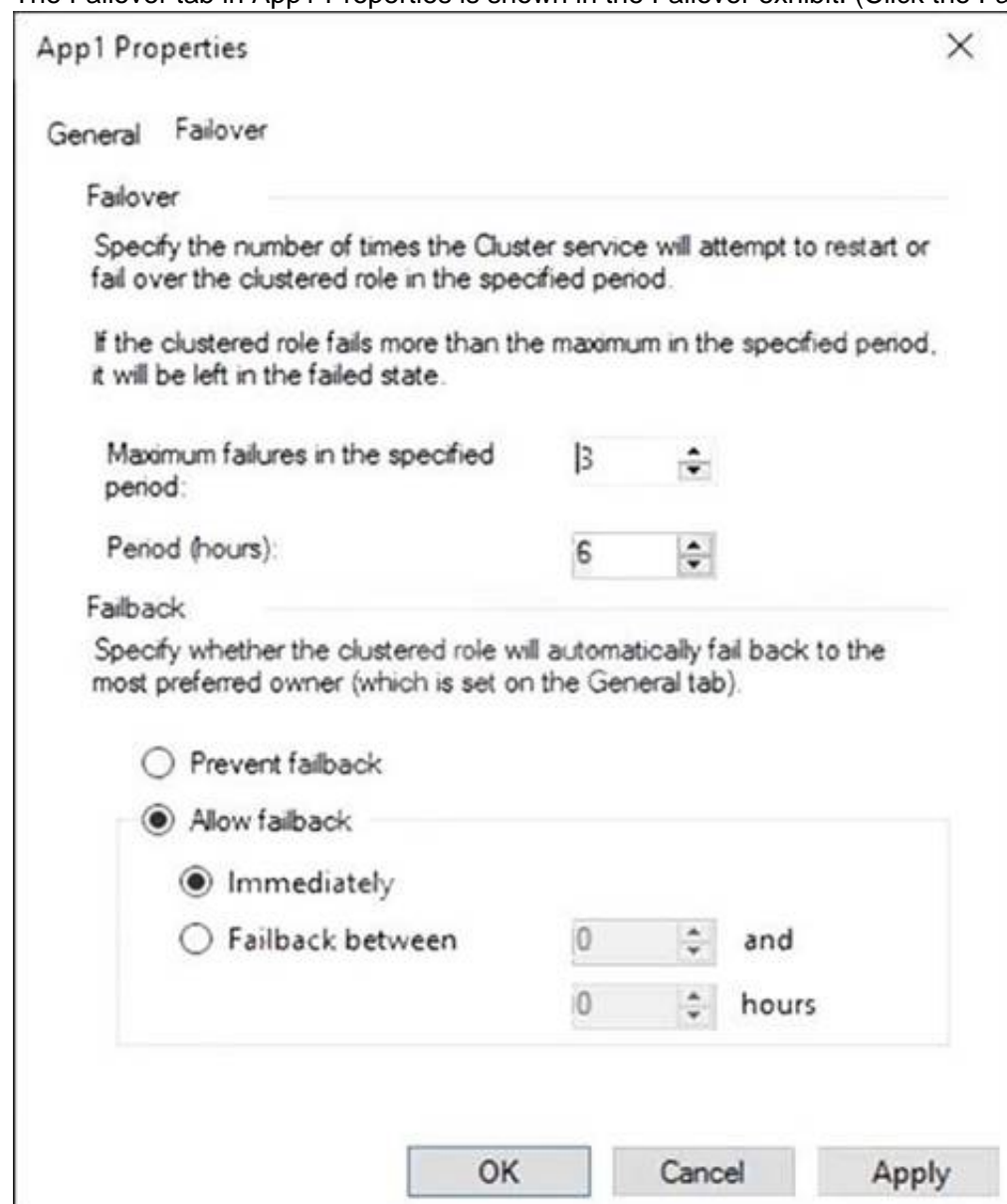
Priority: Medium

Status: Running

Node: Server2

OK Cancel Apply

The Failover tab in App1 Properties is shown in the Failover exhibit. (Click the Failover tab.)



**App1 Properties**

General Failover

Failover

Specify the number of times the Cluster service will attempt to restart or fail over the clustered role in the specified period.

If the clustered role fails more than the maximum in the specified period, it will be left in the failed state.

Maximum failures in the specified period: 3

Period (hours): 6

Failback

Specify whether the clustered role will automatically fail back to the most preferred owner (which is set on the General tab).

☐ Prevent failback  
☒ Allow failback

☒ Immediately  
☐ Failback between 0 and 0 hours

OK Cancel Apply

Server1 shuts down unexpectedly.

You need to ensure that when you start Server1, App1 continues to run on Server2. Solution: You increase Maximum failures in the specified period for the App1 cluster role. Does this meet the goal?



- A. Yes
- B. No

**Answer:** B

**Explanation:**

The Maximum failures setting is used to determine when the cluster determines that a node is offline. It does not affect whether a cluster will fail back when a node comes online.

**NEW QUESTION 80**

- (Exam Topic 3)

Note: This question is part of a series of questions that present the same scenario. Each question in the series contains a unique solution that might meet the stated goals. Some question sets might have more than one correct solution, while others might not have a correct solution.

After you answer a question in this section, you will NOT be able to return to it. As a result, these questions will not appear in the review screen.


You have a failover cluster named Cluster1 that hosts an application named App1.

The General tab in App1 Properties is shown in the General exhibit. (Click the General tab.)

App1 Properties

General

Failover



App1

Name:

App1

Preferred Owners

Select the preferred owners for this clustered role. Use the buttons to list them in order from most preferred at the top to least preferred at the bottom.

☐ Server1

☐ Server2

Up

Down

Priority:

Medium

Status:

Running

Node:

Server2

OK

Cancel

Apply

The Failover tab in App1 Properties is shown in the Failover exhibit. (Click the Failover tab.)

App1 Properties

General

Failover

Failover

Specify the number of times the Cluster service will attempt to restart or fail over the clustered role in the specified period.  
  
If the clustered role fails more than the maximum in the specified period, it will be left in the failed state.

Maximum failures in the specified period: 3

Period (hours): 6

Failback

Specify whether the clustered role will automatically fail back to the most preferred owner (which is set on the General tab).

☐ Prevent failback

☒ Allow failback

☒ Immediately

☐ Failback between 0 and 0 hours

OK

Cancel

Apply

Server1 shuts down unexpectedly.  
You need to ensure that when you start Server1, App1 continues to run on Server2. Solution: From the Failover settings, you select Prevent failback. Does this meet the goal?

- A. Yes
- B. No

Answer: A

Explanation:  
The Prevent failback setting will prevent the cluster failing back to Server1.

NEW QUESTION 81

- (Exam Topic 3)  
You have the servers shown in the following table.

Name	Operating system	Configuration	Install option
Server1	Windows Server 2012 R2	File server	Server Core
Server2	Windows Server 2022	File server	Server Core
Server3	Windows Server 2016	Domain controller	Server with Desktop Experience

You plan to migrate file shares from Server1 to Server2.

Storage Migration Service:

Server1

Server2

Server3

Storage Migration Service extension:

Server1

Server2

Server3

- A. Mastered
- B. Not Mastered

Answer: A

Explanation:  
Server 2  
Server 1

Passing Certification Exams Made Easy

visit - <https://www.surepassexam.com>

#### NEW QUESTION 86

- (Exam Topic 3)

You have an on-premises IIS web server that hosts a web app named Appl. You plan to migrate App1 to a container and run the container in Azure. You need to perform the following tasks:

- Export App1 to a ZIP file.
- Create a container image based on Appl.

The solution must minimize administrative effort.

Answer Area	
Azure Migrate	
The Azure portal	
Web Deploy	
Windows Admin Center	
Windows Server Migration Tools	

Export App1 to a ZIP file:	Tool
Create a container image with App1:	Tool

- A. Mastered  
 B. Not Mastered

**Answer:** A

#### Explanation:

Azure Migrate Web deploy

#### NEW QUESTION 89

- (Exam Topic 3)

Note: This question is part of a series of questions that present the same scenario. Each question in the series contains a unique solution that might meet the stated goals. Some question sets might have more than one correct solution, while others might not have a correct solution.

After you answer a question in this section, you will NOT be able to return to it. As a result, these questions will not appear in the review screen.

Your network contains a single-domain Active Directory Domain Services (AD DS) forest named contoso.com. The functional level of the forest is Windows Server 2012 R2. All domain controllers run Windows Server 2012 R2.

Sysvol replicates by using the File Replication Service (FRS).

You plan to replace the existing domain controllers with new domain controllers that will run Windows Server 2022.

You need to ensure that you can add the first domain controller that runs Windows Server 2022. Solution: You run the Active Directory Migration Tool (ADMT). Does this meet the goal?

- A. Yes  
 B. No

**Answer:** B

#### NEW QUESTION 91

- (Exam Topic 3)

Note: This question is part of a series of questions that present the same scenario. Each question in the series contains a unique solution that might meet the stated goals. Some question sets might have more than one correct solution, while others might not have a correct solution.

After you answer a question in this section, you will NOT be able to return to it. As a result, these questions will not appear in the review screen.

You have a server named Server1 that runs Windows Server.

You need to ensure that only specific applications can modify the data in protected folders on Server1. Solution: From Virus & threat protection, you configure Controlled folder access. Does this meet the goal?

- A. Yes  
 B. No

**Answer:** A

#### Explanation:

Reference:

<https://docs.microsoft.com/en-us/microsoft-365/security/defender-endpoint/customize-controlled-folders?view=>

#### NEW QUESTION 94

- (Exam Topic 3)

You have 200 Azure virtual machines.

You create a recovery plan in Azure Site Recovery to fail over all the virtual machines to an Azure region. The plan has three manual actions.

You need to replace one of the manual actions with an automated process. What should you use?

- A. an Azure Desired State Configuration (DSC) virtual machine extension  
 B. an Azure Automation runbook  
 C. an Azure PowerShell function  
 D. a Custom Script Extension on the virtual machines

**Answer:** B

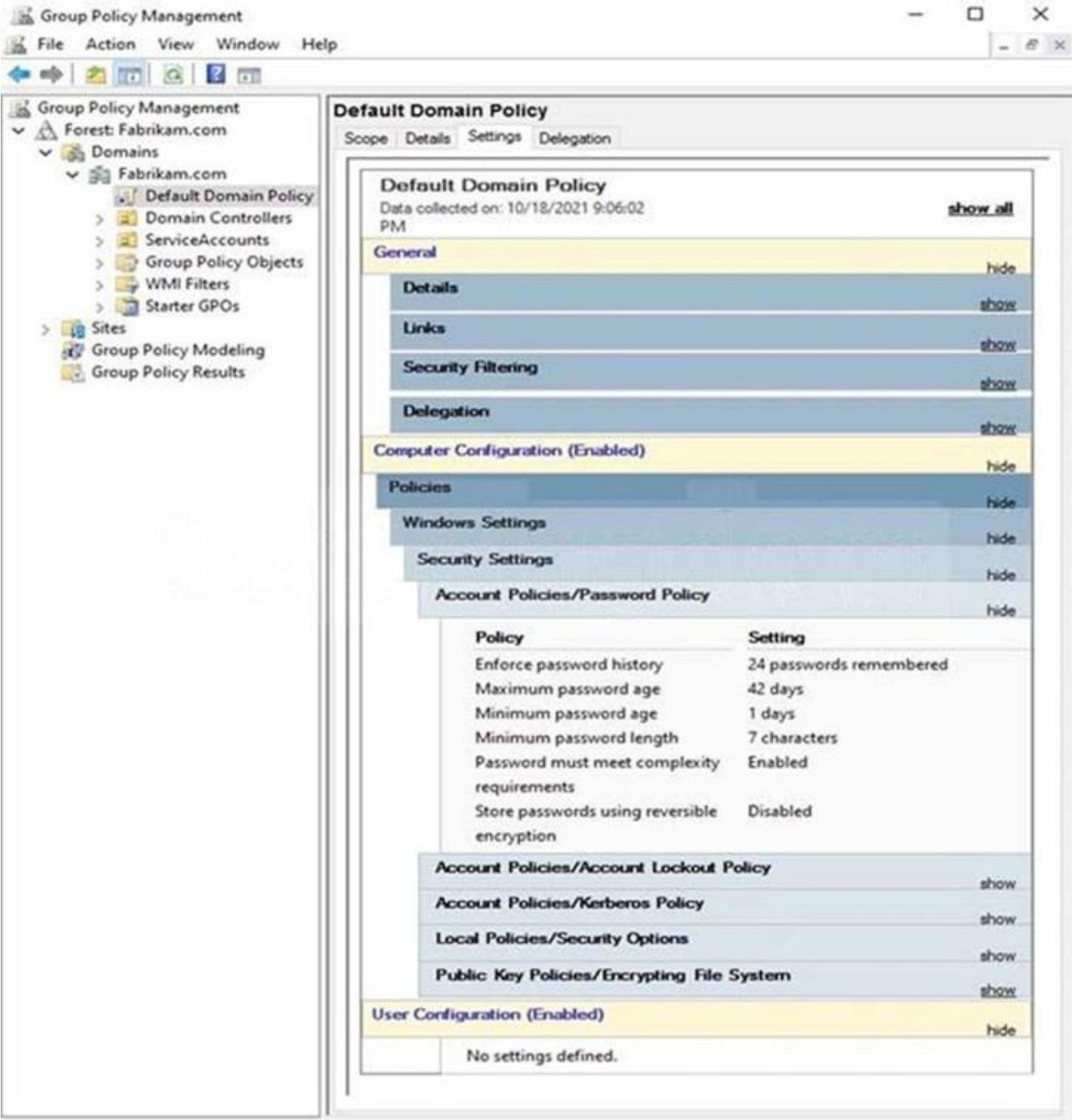
#### Explanation:

Reference:  
<https://docs.microsoft.com/en-us/azure/site-recovery/recovery-plan-overview>

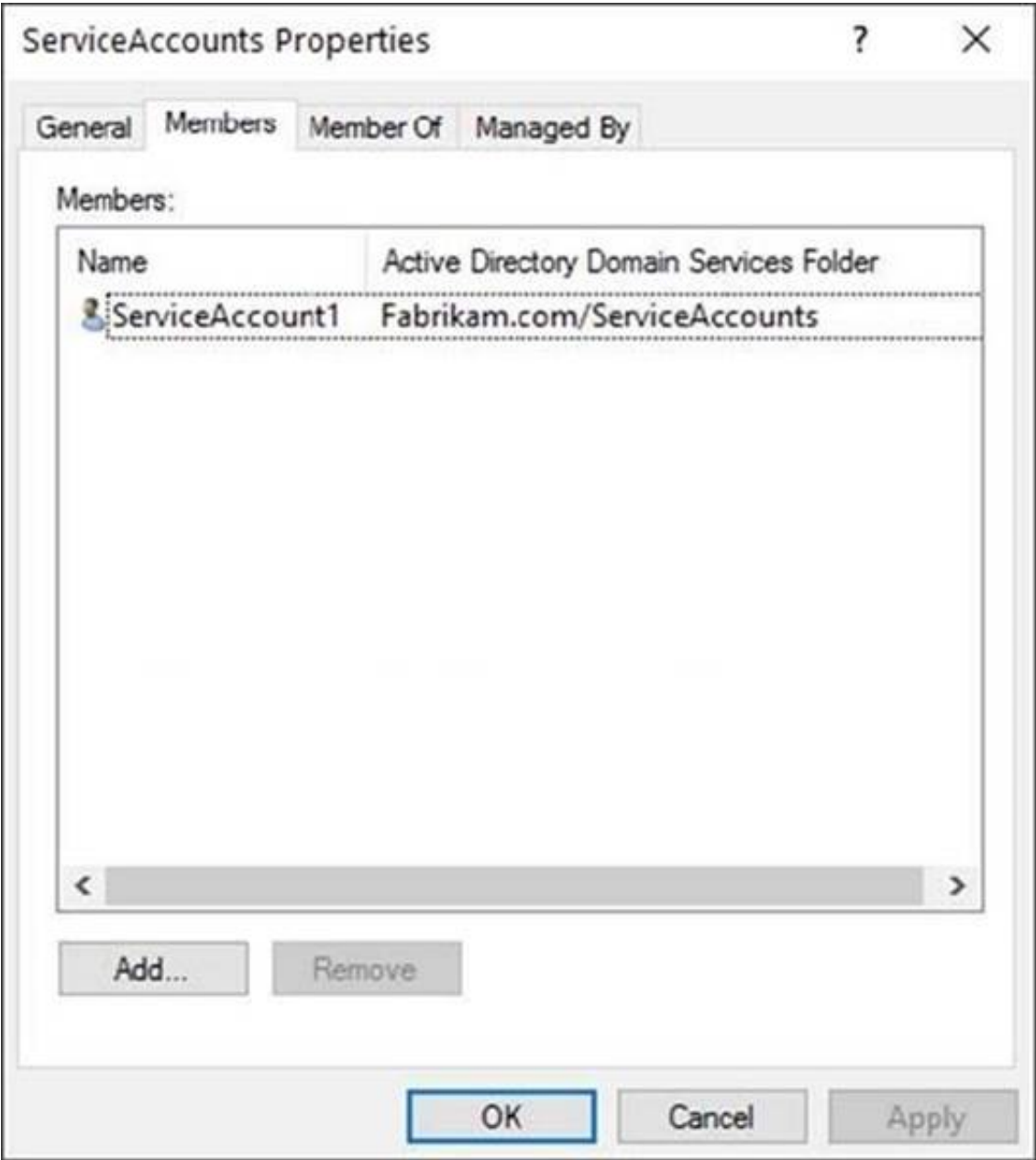
NEW QUESTION 95

- (Exam Topic 3)

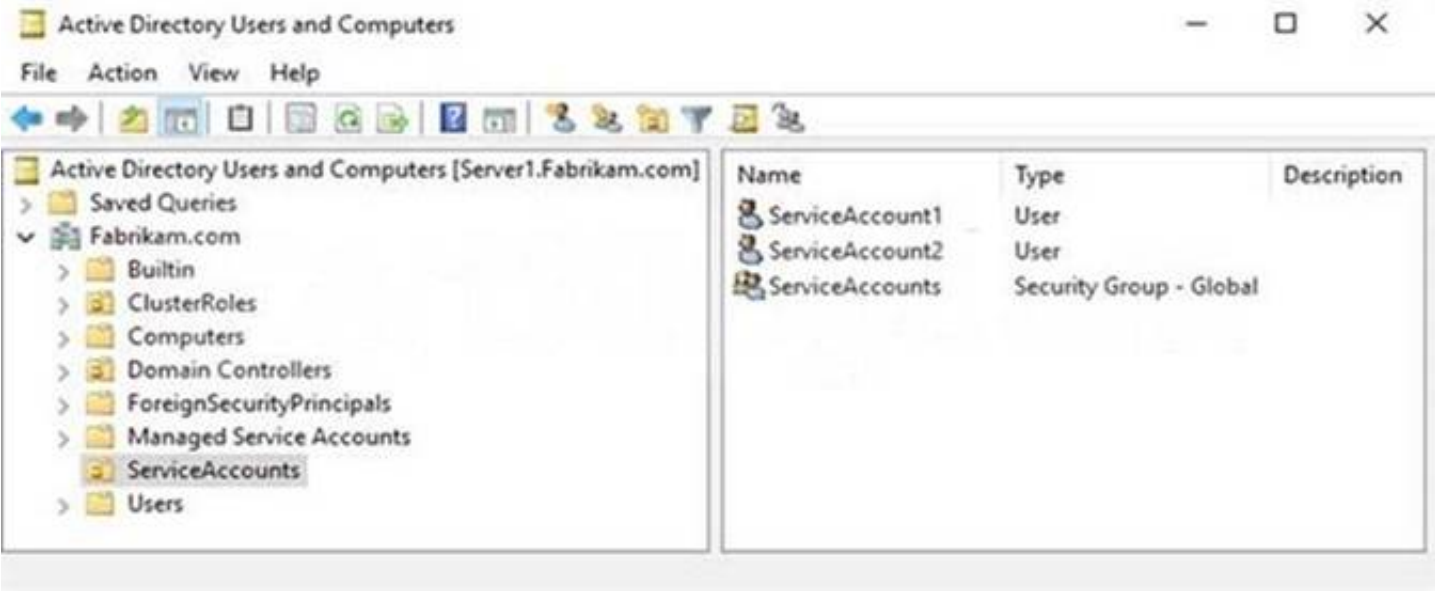
The Default Domain Policy Group Policy Object (GPO) is shown in the GPO exhibit. (Click the GPO tab.)



The members of a group named Service Accounts are shown in the Group exhibit. (Click the Group tab.)



An organizational unit (OU) named ServiceAccounts is shown in the OU exhibit. (Click the OU tab.)



You create a Password Settings Object (PSO) as shown in the PSO exhibit. (Click the PSO tab.)



Service Accounts Policy

TASKS

SECTIONS

Password Settings

Directly Applies To

Extensions

Password Settings

Name: Service Accounts Policy

Precedence: 10

☒ Enforce minimum password length

Minimum password length (characte... 16

☒ Enforce password history

Number of passwords remembered: 12

☒ Password must meet complexity requirements

☐ Store password using reversible encryption

☒ Protect from accidental deletion

Description:

Password age options:

☒ Enforce minimum password age

User cannot change the password... 1

☒ Enforce maximum password age

User must change the password af... 30

☒ Enforce account lockout policy:

Number of failed logon attempts allo... 5

Reset failed logon attempts count aft... 30

Account will be locked out

☒ For a duration of (mins): 60

☐ Until an administrator manually unlocks the a...

Directly Applies To

Name

Mail

ServiceAccounts

Add...

Remove

Extensions

More Information

OK

Cancel

For each of the following statements, select Yes if the statement is true. Otherwise, select No. NOTE: Each correct selection is worth one point.

Statements	Yes	No
The password of ServiceAccount1 must be at least 16 characters long.	<input type="radio"/>	<input type="radio"/>
The password of ServiceAccount2 must be at least 16 characters long.	<input type="radio"/>	<input type="radio"/>
Accounts that have the Service Accounts Policy applied can change their password to P@\$w0rd1.	<input type="radio"/>	<input type="radio"/>

- A. Mastered
- B. Not Mastered

Answer: A

Explanation:

A screenshot of a computer Description automatically generated with medium confidence

Reference:

<https://docs.microsoft.com/en-us/windows-server/identity/ad-ds/get-started/adac/introduction-to-active-directory>

NEW QUESTION 96

- (Exam Topic 2)

You need to meet technical requirements for Share1. What should you use?

- A. Storage Migration Service
- B. File Server Resource Manager (FSRM)
- C. Server Manager
- D. Storage Replica

Answer: A

Explanation:

Reference:

<https://docs.microsoft.com/en-us/windows-server/storage/storage-migration-service/overview>

NEW QUESTION 101

- (Exam Topic 2)

With which servers can Server1 and Server3 communicate? To answer, select the appropriate options in the answer area.

Passing Certification Exams Made Easy

visit - <https://www.surepassexam.com>

NOTE: Each correct selection is worth one point.  
**Answer Area**

Server1 can communicate with:

Server2 only

Server3 only

Server2 and Server3 only

Server2, Server3, and Server4

None of the servers

Server3 can communicate with:

Server2 only

Server1 and Server2 only

Server1 and Server4 only

Server1, Server2, and Server4

None of the servers

- A. Mastered
- B. Not Mastered

**Answer:** A

**Explanation:**  
Graphical user interface, text, application, chat or text message Description automatically generated

**NEW QUESTION 105**  
- (Exam Topic 2)  
What is the effective minimum password length for User1 and Admin1? To answer, select the appropriate options in the answer area.  
NOTE: Each correct selection is worth one point.

Answer Area

User1:

8

9

10

11

12

Admin1:

8

9

10

11

12

- A. Mastered
- B. Not Mastered

**Answer:** A

**Explanation:**  
Table Description automatically generated  
Box 1: 9  
When multiple PSOs apply to a user, the PSO with the highest precedence (lowest precedence number) applies which in this case is PSO1.  
Box 2: 8  
There are no PSOs applied to Admin1 so the password policy from the Default Domain GPO applies. The Minimum password length setting in GPO1 would only apply to local user accounts on computers in OU1. It does not apply to domain user accounts.

**NEW QUESTION 108**  
- (Exam Topic 2)  
You need to configure BitLocker on Server4.  
On which volumes can you turn on BitLocker, and on which volumes can you turn on auto-unlock? To answer, select the appropriate options in the answer area.  
NOTE: Each correct selection is worth one point.

Answer Area

BitLocker:

D only

C and D only

D, E, and F only

C, D, E, and F

Auto-unlock:

D only

C and D only

D, E, and F only

C, D, E, and F

- A. Mastered
- B. Not Mastered

Answer: A

Explanation:

Reference:  
<https://docs.microsoft.com/en-us/windows-server/storage/refs/refs-overview>  
<https://docs.microsoft.com/en-us/powershell/module/bitlocker/enable-bitlockerautounlock?view=windowsserver>

NEW QUESTION 112

- (Exam Topic 2)  
You need to meet the technical requirements for Cluster3. What should you include in the solution?

- A. Enable integration services on all the virtual machines.
- B. Add a Windows Server server role.
- C. Configure a fault domain doe the cluster.
- D. Add a failover cluster role.

Answer: D

Explanation:

The Hyper-V replica broker role is required on the cluster. Reference:  
<https://docs.microsoft.com/en-us/virtualization/community/team-blog/2012/20120327-why-is-the-hyper-v-replic>

NEW QUESTION 113

- (Exam Topic 2)  
You need to meet the technical requirements for User1. To which group in contoso.com should you add User1?

- A. Domain Admins
- B. Account Operators
- C. Schema Admins
- D. Backup Operators

Answer: A

NEW QUESTION 116

- (Exam Topic 1)  
You need to implement a security policy solution to authorize the applications. The solution must meet the security requirements. Which service should you use to enforce the security policy, and what should you use to manage the policy settings? To answer, select the appropriate options in the answer area. NOTE: Each correct selection is worth one point.

**Answer Area**

Enforce the security policy:

Microsoft Defender Application Control

Microsoft Defender Application Guard

Microsoft Defender Credential Guard

Microsoft Defender for Endpoint

Manage the policy settings:

Configuration profiles in Microsoft Intune

Compliance policies in Microsoft Intune

Group Policy Objects (GPOs)

- A. Mastered
- B. Not Mastered

**Answer:** A

**Explanation:**  
Graphical user interface, text, application, chat or text message Description automatically generated  
Reference:  
<https://docs.microsoft.com/en-us/windows/security/threat-protection/windows-defender-application-control/wda>

**NEW QUESTION 117**

- (Exam Topic 1)  
You are planning the migration of APP3 and APP4 to support the Azure migration plan.  
What should you do on Cluster1 and in Azure before you perform the migration? To answer, select the appropriate options in the answer area.  
NOTE: Each correct selection is worth one point.

**Answer Area**

On Cluster1:

Configure Azure Network Adapter.

Create a Point-to-Site (P2S) VPN connection to Vnet1.

Import the Azure Migrate appliance.

Install the Azure File Sync agent.

Install the Windows Server Migration Tools.

In Azure:

Create a premium block blobs Azure Storage account.

Create a private endpoint.

Create a VPN gateway.

Create an Azure Migrate project.

- A. Mastered
- B. Not Mastered

**Answer:** A

**Explanation:**  
Graphical user interface, text, application Description automatically generated  
Reference:  
<https://docs.microsoft.com/en-us/azure/migrate/tutorial-discover-hyper-v>

**NEW QUESTION 118**

- (Exam Topic 1)  
You are planning the implementation of Cluster2 to support the on-premises migration plan. You need to ensure that the disks on Cluster2 meet the security requirements.  
In which order should you perform the actions? To answer, move all actions from the list of actions to the answer area and arrange them in the correct order.



Actions

Add a disk resource to the cluster.

Enable BitLocker on the volume.

Update the BitLockerProtectorInfo property of the volume.

Create a Cluster Shared Volume (CSV).

Put the disk in maintenance mode.

Answer Area

- A. Mastered
- B. Not Mastered

Answer: A

**Explanation:**  
Graphical user interface, text, application, table Description automatically generated  
Reference:  
<https://docs.microsoft.com/en-us/windows-server/failover-clustering/bitlocker-on-csv-in-ws-2022>

NEW QUESTION 122

- (Exam Topic 1)  
You are planning the www.fabrikam.com website migration to support the Azure migration plan. How should you configure WebApp1? To answer, select the appropriate options in the answer area. NOTE: Each correct selection is worth one point.

Answer Area

To enable WebApp1 to handle requests for the website:

Add a custom domain name.

Create a deployment slot.

Create a private endpoint.

To point client connections to WebApp1:

Add HTTP redirect rules on WEB1 and WEB2.

Implement Azure Front Door.

Implement Azure Traffic Manager.

Modify a DNS record.

- A. Mastered
- B. Not Mastered

Answer: A

**Explanation:**  
Box 1: Add a custom domain name  
To migrate www.fabrikam.com website to an Azure App Service web app, you need to add Fabrikam.com as a custom domain in Azure. This will make the domain name available to use in the web app.  
Box 2: Modify a DNS record  
You need to change the DNS record for www.fabrikam.com to point to the Azure web app. HTTP redirect rules won't work because WEB1 and WEB2 will be decommissioned. Reference:  
<https://docs.microsoft.com/en-us/azure/app-service/app-service-web-tutorial-custom-domain?tabs=a%2Cazurecl>

NEW QUESTION 123

- (Exam Topic 1)  
You are planning the DHCP1 migration to support the DHCP migration plan.  
Which two PowerShell cmdlets should you run on DHCP1, and which two PowerShell cmdlets should you run on DHCP2? To answer, drag the appropriate cmdlets to the correct servers. Each cmdlet may be used once, more than once, or not at all. You may need to drag the split bar between panes or scroll to view content.  
NOTE: Each correct selection is worth one point.



Cmdlets	Answer Area
Add-DhcpServerInDC	DHCP1: <input type="text" value="Cmdlet"/>
Add-DhcpServerv4Scope	<input type="text" value="Cmdlet"/>
Export-DhcpServer	
Import-DhcpServer	DHCP2: <input type="text" value="Cmdlet"/>
Remove-DhcpServerInDC	<input type="text" value="Cmdlet"/>
Remove-DhcpServerv4Scope	

- A. Mastered
- B. Not Mastered

Answer: A

**Explanation:**  
Graphical user interface, text, application, chat or text message Description automatically generated  
Reference:  
<https://theitbros.com/how-to-migrate-dhcp-to-windows-server-2016/>

NEW QUESTION 126  
.....

## Thank You for Trying Our Product

### We offer two products:

1st - We have Practice Tests Software with Actual Exam Questions

2nd - Questions and Answers in PDF Format

### AZ-801 Practice Exam Features:

- \* AZ-801 Questions and Answers Updated Frequently
- \* AZ-801 Practice Questions Verified by Expert Senior Certified Staff
- \* AZ-801 Most Realistic Questions that Guarantee you a Pass on Your FirstTry
- \* AZ-801 Practice Test Questions in Multiple Choice Formats and Updatesfor 1 Year

**100% Actual & Verified — Instant Download, Please Click**  
**[Order The AZ-801 Practice Test Here](#)**