

Exam Questions JN0-363

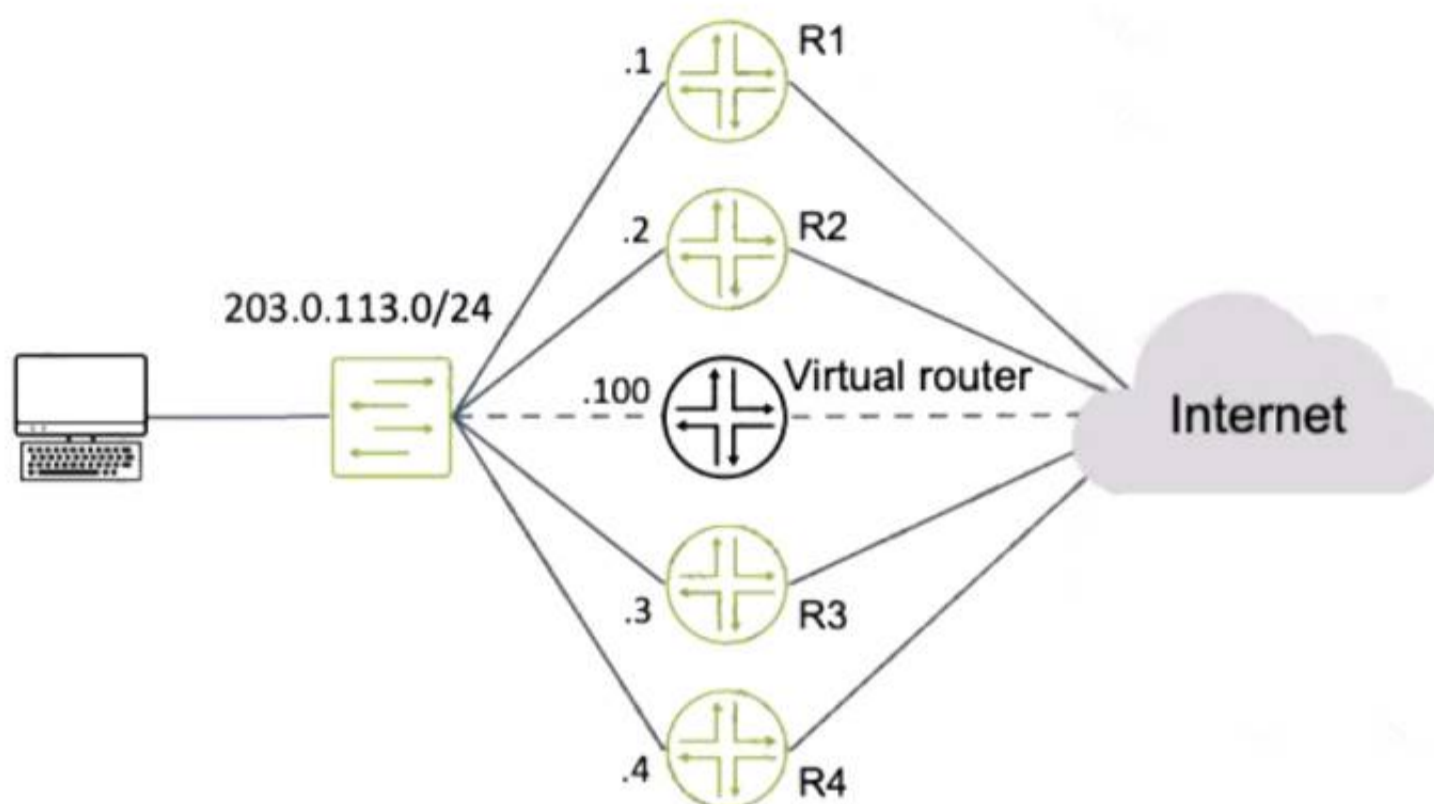
Service Provider Routing and Switching Specialist (JNCIS-SP)

<https://www.2passeasy.com/dumps/JN0-363/>



NEW QUESTION 1

Exhibit



Routers R1 and R4 have a VRRP priority of 90, while R2 and R3 have default VRRP priorities. Referring to the exhibit, which router will be elected as the primary VRRP router?

- A. R3
- B. R4
- C. R2
- D. R1

Answer: D

NEW QUESTION 2

Which statement is correct about the FE80::/10 prefix?

- A. This prefix range is used for the link local address.
- B. This prefix range is used on the loopback interface.
- C. This prefix range is reserved for multicast applications.
- D. This prefix range is not reserved.

Answer: A

NEW QUESTION 3

Exhibit

```
[edit]
user@router# show interfaces ge-0/0/0
unit 0 {
    family bridge {
        interface-mode trunk;
        vlan-id-list 101-120;
    }
}
[edit]
user@router# show interfaces ge-0/0/1
flexible-vlan-tagging;
unit 0 {
    vlan-id 200;
    family bridge {
        interface-mode trunk;
        inner-vlan-id-list 101-120;
    }
...
[edit]
user@router# show bridge-domains
...
[edit]
user@router# show bridge-domains
bd {
    vlan-id-list 101-120;
}
```

Referring to the exhibit, which two statements are correct? (Choose two.)

- A. Traffic ingressing ge-0/0/0 that is tagged with VLAN 101 will egress ge-0/0/1 unchanged.
- B. Traffic ingressing ge-0/0/0 that is tagged with VLAN 100 will be dropped.
- C. Traffic ingressing ge-0/0/0 that is tagged with VLAN 200 will egress ge-0/0/1 with an outer VLAN tag of 200.
- D. Traffic ingressing ge-0/0/0 that is tagged with VLAN 101 will egress ge-0/0/1 with an outer VLAN tag of 200.

Answer: AB

NEW QUESTION 4

Exhibit

```
user@R2> show ospf interface extensive
Interface State Area DR ID BDR ID Nbrs
ge-0/0/3.0 DR 0.0.0.1 192.168.1.2 192.168.1.1 1 Type: LAN, Address: 172.26.1.2, Mask:
255.255.255.252, MTU: 1500, Cost: 1
DR addr: 172.26.1.2, BDR addr: 172.26.1.1, Priority: 128, Adj count: 1
Hello: 10, Dead: 40, ReXmit: 5, Not Stub
Auth type: None Topology default (ID 0) -> Cost: 0
ge-0/0/1.0 BDR 0.0.0.0 192.168.1.3 192.168.1.2 1
Type: LAN, Address: 172.26.2.1, Mask: 255.255.255.252, MTU: 1500, Cost: 1
DR addr: 172.26.2.2, BDR addr: 172.26.2.1, Priority: 128, Adj count: 1 Hello: 10,
Dead: 40, ReXmit: 5, Not Stub
Auth type: None
Topology default (ID 0) -> Cost: 0
```

Referring to the exhibit, which two statements are correct? (Choose two.)

- A. The OSPF Interfaces are configured as point-to-point.
- B. The ge-0/0/1.0 Interface is configured as passive.
- C. The R2 device is an ABR.
- D. Junos OS default OSPF hello timers and dead intervals are used on all interfaces.

Answer: BD

NEW QUESTION 5

Which two statements are correct about the way that BGP propagates routes by default? (Choose two.)

- A. A route learned by EBGP will be re-advertised to IBGP peers.
- B. A route learned by IBGP will not be re-advertised to IBGP peers.
- C. A route learned by EBGP will not be re-advertised to IBGP peers.
- D. A route learned by IBGP will be re-advertised to IBGP peers.

Answer: CD

NEW QUESTION 6

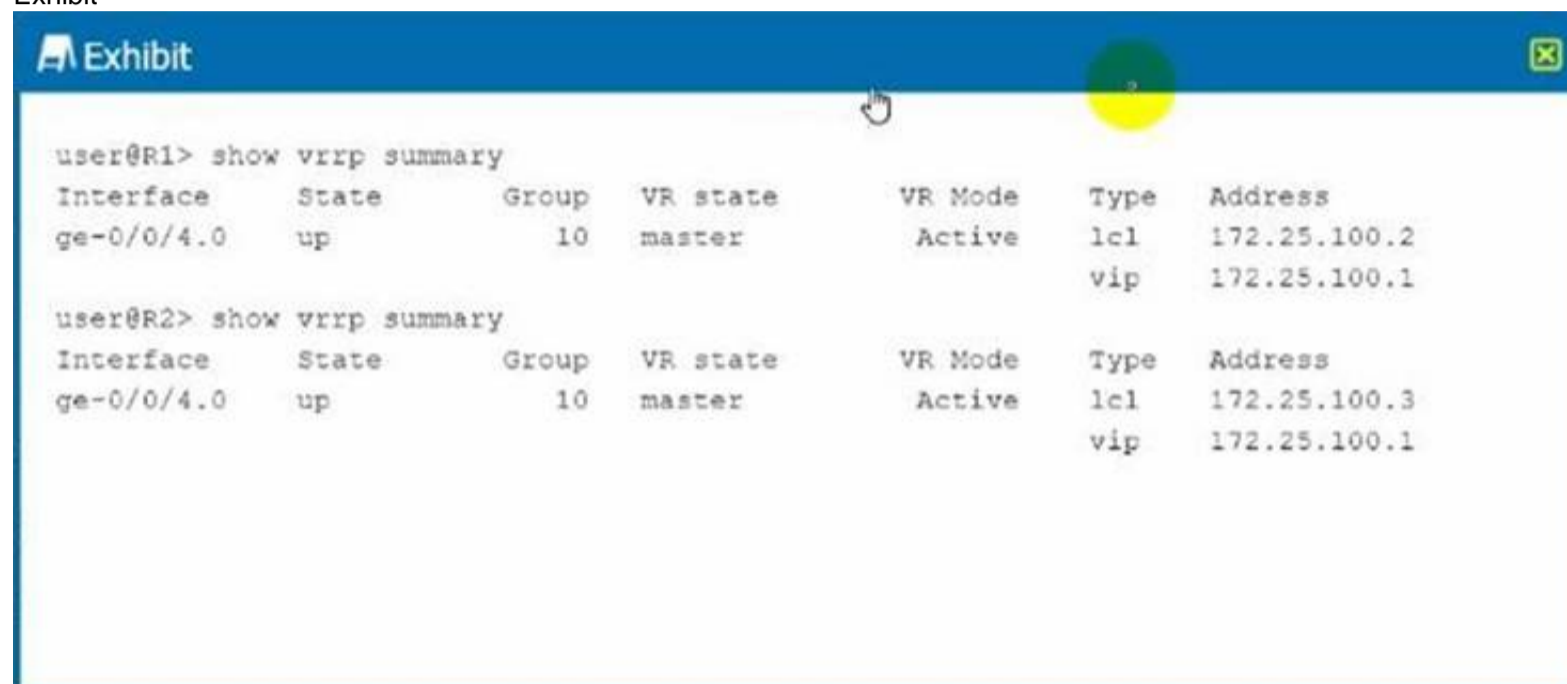
Which two LSA types are permuted in OSPF totally stubby areas? (Choose two.)

- A. Type 1
- B. Type 3
- C. Type 5
- D. Type 7

Answer: CD

NEW QUESTION 7

Exhibit



Referring to the exhibit, which statement is true about VRRP?

- A. VRRP communication between the two devices is not functioning correctly.
- B. Both routers are in the same state because they have the same VRRP priority.
- C. RRP Is functioning normally in active/active mode.
- D. The routers should use different virtual IP addresses for VRRP to function correctly.

Answer: D

NEW QUESTION 8

What are three types of MPLS routers? (Choose three.)

- A. transit routers
- B. peering routers
- C. egress routers
- D. aggregation routers
- E. ingress routers

Answer: ACE

NEW QUESTION 9

Which LSA type does an OSPF ABR use to advertise external routes generated by an NSSAASBR into the backbone?

- A. Type 5
- B. Type 7
- C. Type 3
- D. Type 1

Answer: C

NEW QUESTION 10

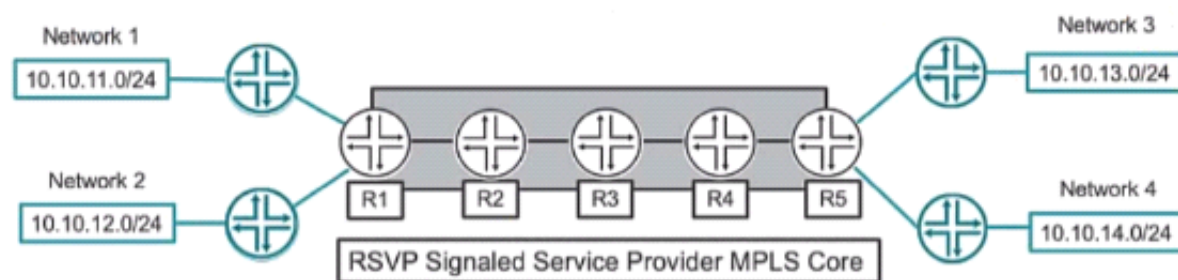
The segment touting SRGB start label Is 10,000 and the SRGB index range is 500.
 In this scenario, which two statements are correct? (Choose two.)

- A. The first usable label is 10,001.
- B. The last usable label is 10.501.
- C. The last usable label is 10,499.
- D. The first usable label Is 10,000.

Answer: CD

NEW QUESTION 10

Exhibit



Referring to the exhibit, what is the minimum number of LSPs required to support all four networks?

- A. 1
- B. 2
- C. 8
- D. 4

Answer: C

NEW QUESTION 11

Exhibit

```

[edit]
user@R1# show policy-options
policy-statement next-hop-self-policy {
  term alter-next-hop {
    then {
      next-hop self;
    }
  }
}
[edit]
user@R1# show protocols bgp
group int-64503 {
  type internal;
  local-address 192.168.100.1;
  neighbor 192.168.100.2;
}
group ext-64501 {
  type external;
  peer-AS 64501;
  neighbor 172.30.1.2;
}

```

Referring to the exhibit, where should next-hop-self-policy be applied to alter the next-hop value?

- A. The policy is applied as an export policy for the group int-64503.
- B. The policy is applied as an export policy for the group ext-64501.
- C. The policy is applied as an import policy for the group int- 64 503.
- D. The policy is applied as an Import policy for the group ext-64501.

Answer: D

NEW QUESTION 15

An OSPF router does not have a router ID configured.

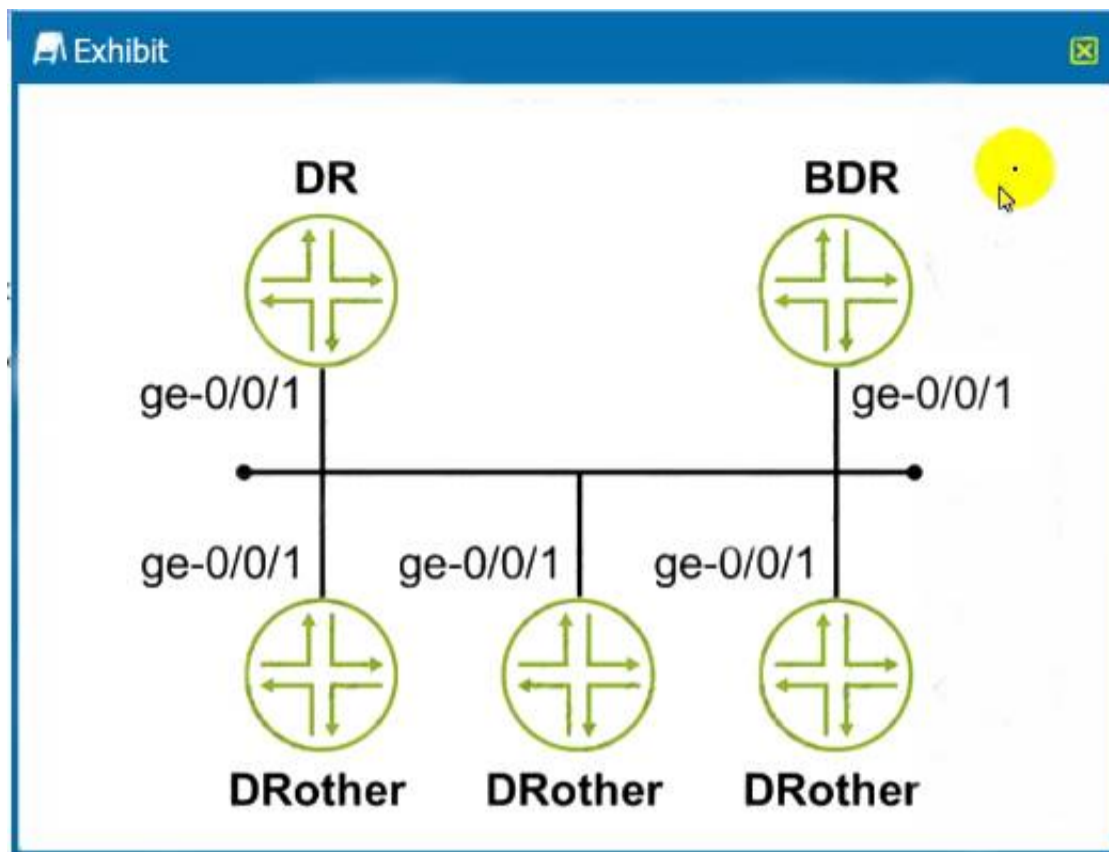
In this scenario, which statement is correct about the router ID?

- A. The Junos OS will use the IP address assigned to the interface with the lowest MAC address.
- B. A router ID will not be assigned until it is manually configured.
- C. The Junos OS will use the IP address assigned to the loopback interface for the router ID.
- D. The Junos OS will use the IP address assigned to the Interface with the highest priority.

Answer: B

NEW QUESTION 20

Exhibit



You are asked to configure the OSPF environment to prevent the DRoother routers from participating in DR/BDR election. Referring to the exhibit, which command will accomplish this task?

- A. set protocols ospf area 0.0.0.0 interface ge-0/0/1 priority 255
- B. set protocols ospf area 0.0.0.0 interface ge-0/0/1 priority 0
- C. set protocols ospf area 0.0.0.0 interface ge-0/0/1 interface-type nbma
- D. set protocols ospf area 0.0.0.0 interface ge-0/0/1 interface-type p2p

Answer: A

NEW QUESTION 23

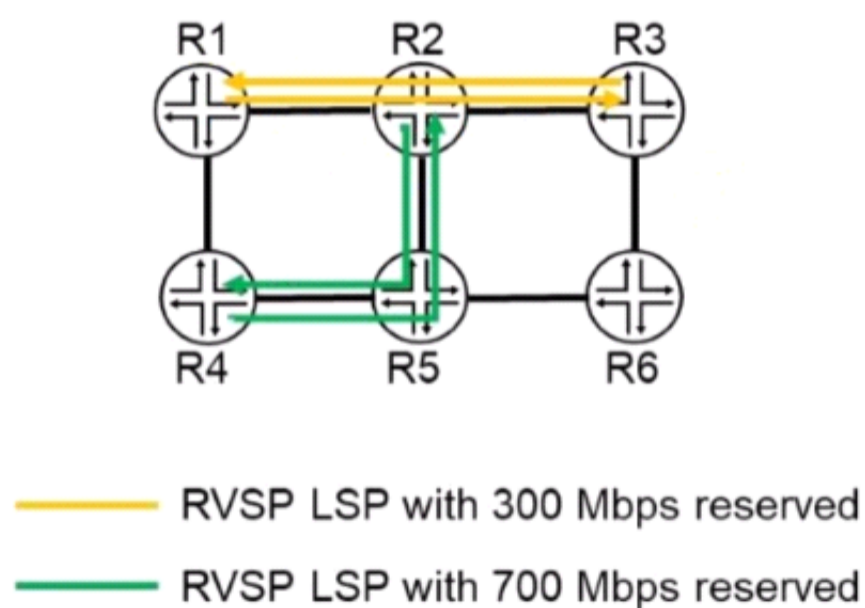
Which two statements are correct about the community BGP attribute on a Junos device? (Choose two.)

- A. The community attribute is a mandatory BGP attribute.
- B. If the community attribute is present, it is ignored and deleted in the BGP updates.
- C. If the community attribute is present, it should be passed unchanged in the BGP updates.
- D. The community attribute is an optional BGP attribute.

Answer: AC

NEW QUESTION 26

Exhibit



The exhibit shows a topology with 1 Gbps interfaces between routers, and four RSVP LSPs operating with the respective bandwidth reservations. Which path will be selected for a new LSP from R4 to R6 with a bandwidth reservation of 400 Mbps?

- A. R4 -> R1 -> R2 -> R5 -> R6
- B. R4 -> R5 -> R6
- C. R4 -> R5 -> R2 -> R3 -> R6
- D. R4 -> R1 -> R2 -> R3 -> R6

Answer: A

NEW QUESTION 28

Which two statements are correct about IS-IS? (Choose two.)

- A. A level 1 only router can never form an adjacency with a level 2 only router.
- B. For level 2 adjacencies, the area IDs can be different.
- C. For level 2 adjacencies, the area IDs must be the same.
- D. A level 1 only router can form an adjacency with a level 2 only router.

Answer: CD

NEW QUESTION 31

Exhibit

```

user@switch> show spanning-tree bridge
STP bridge parameters
Context ID                : 0
Enabled protocol          : RSTP
Root ID                   : 8192.50:c5:8d:ae:db:41
Hello time                 : 10 seconds
Maximum age               : 40 seconds
Forward delay             : 30 seconds
Message age               : 0
Number of topology changes : 6
Time since last topology change : 781 seconds
Topology change initiator : ge-0/0/14.0
Topology change last recvd. from : 2c:6b:f5:31:06:0b
Local parameters
Bridge ID                 : 8192.50:c5:8d:ae:db:41
Extended system ID       : 0
Internal instance ID     : 0
    
```

Which two statements are correct about the information shown in the exhibit? (Choose two.)

- A. The root bridge is reachable using the ge-0/0/14 interface.
- B. This switch is the root bridge for this spanning tree topology.
- C. This switch has a bridge priority of 8k.
- D. The root bridge's priority is 4k.

Answer: BD

NEW QUESTION 35

Interface ge-0/0/0.0 connects your network to your ISP. You want to advertise this interface address as an Internal route in OSPF without creating a neighbor with your ISP.

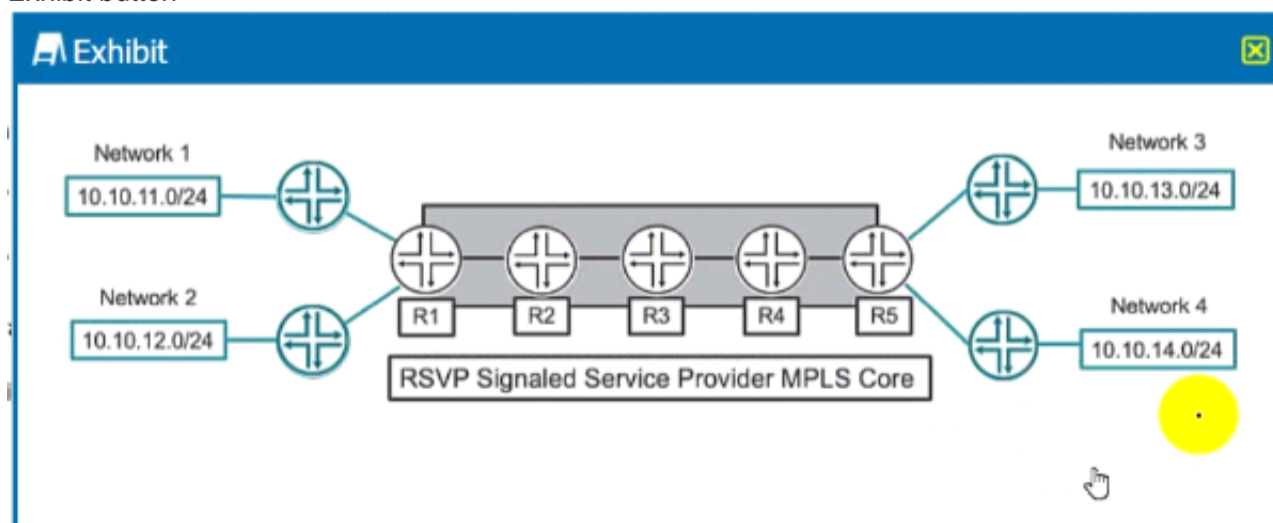
In this scenario, how is this task accomplished?

- A. Remove interface ge-0/0/0.0 from OSPF.
- B. Create a generated route for Interface ge-0/0/0.0.
- C. Add ge-0/0/0.0 as a passive interface in OSPF.
- D. Configure a static route for Interface ge-0/0/0.0.

Answer: D

NEW QUESTION 37

Exhibit button



Which two statements are correct about the service provider MPLS network shown in the exhibit? (Choose two.)

- A. R3 will perform a label pop operation on the transport MPLS label.
- B. Traffic from Network 1 to Network 3 and traffic from Network 1 to Network 4 each need their own unique label-switched path.
- C. Traffic from Network 1 to Network 3 and from Network 1 to Network 4 can share the same label-switched path.
- D. R3 will perform a label swap operation on the transport MPLS label.

Answer: AD

NEW QUESTION 41

You are adding an IPv6 configuration to an Interface on a Junos device. In this scenario, which statement is correct?

- A. The link local address must be manually configured within the fd00::/8 prefix range.
- B. The link local address must be manually configured within the fe80::/10 prefix range.
- C. The link local address is automatically created using the MAC address within the fe80::/10 prefix range.
- D. The link local address is automatically created using the MAC address within the fd00::/8 prefix range.

Answer: D

NEW QUESTION 45

What is the correct order of BGP attributes for active route selection?

- A. next hop -> local preference -> AS path -> MED -> origin
- B. next hop -> AS path -> local preference -> origin -> MED
- C. next hop -> local preference -> AS path -> origin -> MED
- D. next hop -> origin -> local preference -> AS path -> MED

Answer: C

NEW QUESTION 48

.....

THANKS FOR TRYING THE DEMO OF OUR PRODUCT

Visit Our Site to Purchase the Full Set of Actual JN0-363 Exam Questions With Answers.

We Also Provide Practice Exam Software That Simulates Real Exam Environment And Has Many Self-Assessment Features. Order the JN0-363 Product From:

<https://www.2passeasy.com/dumps/JN0-363/>

Money Back Guarantee

JN0-363 Practice Exam Features:

- * JN0-363 Questions and Answers Updated Frequently
- * JN0-363 Practice Questions Verified by Expert Senior Certified Staff
- * JN0-363 Most Realistic Questions that Guarantee you a Pass on Your FirstTry
- * JN0-363 Practice Test Questions in Multiple Choice Formats and Updatesfor 1 Year