



Microsoft

Exam Questions PL-600

Microsoft Power Platform Solution Architect

About ExamBible

[Your Partner of IT Exam](#)

Found in 1998

ExamBible is a company specialized on providing high quality IT exam practice study materials, especially Cisco CCNA, CCDA, CCNP, CCIE, Checkpoint CCSE, CompTIA A+, Network+ certification practice exams and so on. We guarantee that the candidates will not only pass any IT exam at the first attempt but also get profound understanding about the certificates they have got. There are so many alike companies in this industry, however, ExamBible has its unique advantages that other companies could not achieve.

Our Advances

* 99.9% Uptime

All examinations will be up to date.

* 24/7 Quality Support

We will provide service round the clock.

* 100% Pass Rate

Our guarantee that you will pass the exam.

* Unique Gurantee

If you do not pass the exam at the first time, we will not only arrange FULL REFUND for you, but also provide you another exam of your claim, ABSOLUTELY FREE!

NEW QUESTION 1

HOTSPOT - (Topic 1)

You need to ensure that the solution meets the data security and compliance requirements.

What should you recommend? To answer, select the appropriate options in the answer area.

NOTE: Each correct selection is worth one point.

Scenario	Relationship behavior
A worker transfers to a new client company.	<div><div></div><div>▼</div><div>Assign: Cascade All</div><div>Assign: Cascade None</div><div>Merge: Cascade All</div><div>Rollup View: Cascade All</div></div>
A user deletes a worker's job placement history.	<div><div></div><div>▼</div><div>Delete: Cascade All</div><div>Delete: Remove Link</div><div>Delete: Restrict</div></div>

Answer:

Scenario	Relationship behavior
A worker transfers to a new client company.	<div><div></div><div>▼</div><div>Assign: Cascade All</div><div>Assign: Cascade None</div><div>Merge: Cascade All</div><div>Rollup View: Cascade All</div></div>
A user deletes a worker's job placement history.	<div><div></div><div>▼</div><div>Delete: Cascade All</div><div>Delete: Remove Link</div><div>Delete: Restrict</div></div>

- A. Mastered
- B. Not Mastered

Answer: A

Explanation:

Box 1: Assign: Cascade None
Scenario: Worker still records must be archived after ten years and are then removed from the main system.
Assign: The referenced table record owner is changed. Cascade None: Do nothing.

NEW QUESTION 2
HOTSPOT - (Topic 1)

You need to design tables for the solution.
What should you recommend? To answer, select the appropriate options in the answer area.
NOTE: Each correct selection is worth one point.

Data type	Technical solution
Job placement record	<div><div></div><div><div>Custom table</div><div>Activity table</div><div>Virtual table</div></div></div>
Security clearance record	<div><div></div><div><div>Lookup (N:1)</div><div>Choice</div><div>Lookup (N:N)</div></div></div>

A. Mastered

B. Not Mastered

Answer: A

Explanation:

Box 1: Virtual Table

A virtual table is a custom table in Microsoft Dataverse that has columns containing data from an external data source. Virtual tables appear in your app to users as regular table rows, but contain data that is sourced from an external database, such as an Azure SQL Database. Rows based on virtual tables are available in all clients including custom clients developed using the Dataverse web services.

Scenario:

? First Up uses an on-premises system to manage current and historical patient data including medications and medical visits.

? The company plans to reference historical data in the existing system. The records held in these systems will not be migrated to the new solution except for medication information.

? The solution must provide a worker appointment booking system that can access worker historical job placement data.

? First Up staff members must be able to view and update worker records. They must be able to see current and historical job placement data on the same form in the new solution.

Box 2: Lookup (N:1)

Each worker can have many security clearances, so need a 1:N relationship.

Scenario: The solution must support tracking of security clearance information for a worker including the date, status, and certifying agency.

NEW QUESTION 3

- (Topic 1)

You need to recommend a solution for handling data entry requirements for the mobile audit teams.

What are two possible ways to achieve the goal? Each correct answer presents a complete solution.

NOTE: Each correct selection is worth one point.

A. Mastered

B. Not Mastered

Answer: A

Explanation:

Scenario:

Audit teams must have the ability to view worker information on their mobile devices. Audit teams must be able to record data during visits to locations where workers are placed.

When you create an app, or someone shares an app with you, you can run that app on the Power Apps mobile app or in a web browser.

Reference:

<https://docs.microsoft.com/en-us/powerapps/user/run-app-browser>

NEW QUESTION 4

- (Topic 1)

You need to recommend a reporting solution for the organization.

Which two options should you recommend? Each correct answer presents a complete solution.

NOTE: Each correct selection is worth one point.

A. AI Builder

B. SQL Server Reporting Services (SSRS)

C. Dynamics 365

D. Power BI

Answer: BC

Explanation:

Scenario:

? The reporting and analytics team must be able to create reports that include data from all facilities and all workers.

? Management reports must present an overview of the entire organization. Other reports may be limited to specific offices.

B: Power Apps apps can include reports that provide useful business information to the user. These reports are based on SQL Server Reporting Services and

provide the same set of features that are available for typical SQL Server Reporting Services reports.

C: Microsoft Dynamics 365 online and Model-Driven PowerApps offers several advanced reporting options. Advanced reports are often necessary when business requirements demand complex calculations, returning multiple data sets, grouping large sets of data based on rules, and retrieving data from different data sources.

Reference:
<https://docs.microsoft.com/en-us/powerapps/maker/model-driven-apps/add-reporting-to-app>

<https://powerusers.microsoft.com/t5/Building-Power-Apps/Creating-SSRS-Report-for-Model-Driven-PowerApps/td-p/621866>
<https://docs.microsoft.com/en-us/powerapps/maker/canvas-apps/powerapps-custom-visual>

NEW QUESTION 5

DRAG DROP - (Topic 2)

You need to propose a solution for form requirements.

What should you recommend? To answer, drag the appropriate solutions to the correct requirements. Each solution may be used once, more than once, or not at all. You may need to drag the split bar between panes or scroll to view content.

NOTE: Each correct selection is worth one point.

Solutions	Requirement	Solution
Field controls	Phone number format	
Workflow	Sections of Agents case form	
Custom development		

- A. Mastered
- B. Not Mastered

Answer: A

Explanation:

Box 1: Field controls

You must standardize the format used by agents to enter customer phone numbers.

Box 2: Workflow

Log issues as cases. The case form must show variable sections based on the case type.

NEW QUESTION 6

HOTSPOT - (Topic 2)

You need to recommend tools for agents and management.

Which tools should you recommend? To answer, select the appropriate option in the answer area.

NOTE: Each correct selection is worth one point.

User type

Tool

Agent

	▼
Power BI	
Dashboard	
Microsoft Power Automate	
Microsoft Power Apps	

Management

	▼
Power BI	
Microsoft Power Apps	
Microsoft AppSource	
Microsoft Power Automate	

Answer:

User type	Tool
Agent	<div><div></div><div>Power BI</div><div>Dashboard</div><div>Microsoft Power Automate</div><div>Microsoft Power Apps</div></div>
Management	<div><div></div><div>Power BI</div><div>Microsoft Power Apps</div><div>Microsoft AppSource</div><div>Microsoft Power Automate</div></div>

- A. Mastered
- B. Not Mastered

Answer: A

Explanation:

Box 1: Dashboard

Agents need dashboards to show a current count of all reservations on the entity.

Box 2: Power BI

Management requires paginated reports for stakeholders.

NEW QUESTION 7

- (Topic 2)

You need to provide the IT team and managers with a mobile solution. How many apps should you recommend?

A.

one app for each job role

- B. one app for each user
- C. one app for all employees of the team
- D. one app for each team of employees

Answer: A

Explanation:

Scenario: IT staff needs a mobile solution to see IT cases at the top of the menu since this is their primary focus. Managers need to see all customer dashboards at the top of their menu on their mobile device.

NEW QUESTION 8

- (Topic 2)

You need to recommend a feature that erases agent workloads and resolves reported issues. What should you recommend?

- A. Dynamics 365 Customer Service default functionality
- B. Microsoft AppSource
- C. Microsoft Store

Answer: A

Explanation:

Scenario: Agents need a way to track reservation issues. Use Dynamics 365 Customer Service to:

? Track customer issues through cases

Reference:

<https://docs.microsoft.com/en-us/dynamics365/customer-service/overview>

NEW QUESTION 9

- (Topic 2)

You need to recommend an authentication solution for the planned implementation of Dynamics 365.

What should you include in the recommendation?

- A. Use synchronized identities.
- B. Use the Office 365 tenant for Dynamics 365 Customer Service.
- C. Create a new tenant for Dynamics 365 Customer Service.
- D. Use federated identities

Answer: A

Explanation:

Scenario: Ensure that employees can sign in to all Microsoft apps by using one set of credentials per employee.
Synchronized identity. Synchronize on-premises directory objects with Microsoft 365 and manage your users on-premises. You can also synchronize passwords so that the users have the same password on-premises and in the cloud, but they will have to sign in again to use Microsoft 365.
Reference:
<https://docs.microsoft.com/en-us/power-platform/admin/manage-user-account-synchronization>

NEW QUESTION 10

- (Topic 3)
You need to recommend a method for transferring machine information to Dynamics 365 Field Service.
What should you recommend?

- A. Microsoft Dataverse connector
- B. Dual-write
- C. Lifecycle Services

Answer: A

Explanation:

Scenario: Information about each machine produced must be transferred to Dynamics 365 Field Service.
Use the Microsoft Dataverse connector when connecting to the Microsoft Dataverse used for Microsoft Dynamics 365 Sales, Microsoft Dynamics 365 Customer Service, Microsoft Dynamics 365 Field Service, Microsoft Dynamics 365 Marketing, and Microsoft Dynamics 365 Project Service Automation.
Reference:
<https://docs.microsoft.com/en-us/powerapps/maker/canvas-apps/connections/connection-dynamics-crmonline>

NEW QUESTION 10

- (Topic 3)
You need to recommend a solution for creating the initial inspection checklists. What should you recommend?

- A. Power Apps Maker portal
- B. Dataverse for Teams
- C. Power Apps Studio
- D. Data Migration utility

Answer: B

Explanation:

Scenario: Standardized checklists must be stored in the solution for use by inspectors. A copy must be created when a new inspection is initiated.
Dataverse for Teams – built on Microsoft Dataverse – provides relational data storage, rich data types, enterprise-grade governance, and one-click solution deployment to the Microsoft Teams app store.
Dataverse for teams table creation has all of the things that are great about Microsoft Lists, without the major downsides.
Reference:
<https://docs.microsoft.com/en-us/powerapps/teams/create-table>

NEW QUESTION 15

HOTSPOT - (Topic 3)
You need to recommend solutions to meet the inspection requirements.
What should you recommend? To answer, select the appropriate options in the answer area.
NOTE: Each correct selection is worth one point.

Requirement	Solution
View, assign, and resolve inspection bottlenecks.	<div><div></div><div>Booking rules</div><div>Schedule board</div><div>Proficiency models</div></div>
Automatically input measurement readings from inspection gauges	<div><div></div><div>Custom connector</div><div>Azure IoT Hub connector</div><div>Azure IoT Central connector</div><div>Microsoft Dataverse connector</div></div>

Answer:

Requirement

Solution

View, assign, and resolve inspection bottlenecks.

	▼
Booking rules	
Schedule board	
Proficiency models	

Automatically input measurement readings from inspection gauges

	▼
Custom connector	
Azure IoT Hub connector	
Azure IoT Central connector	
Microsoft Dataverse connector	

- A. Mastered
- B. Not Mastered

Answer: A

Explanation:

Box 1: Schedule board

The Dynamics 365 Field Service schedule board provides an overview of resource availability and bookings you can make.

Box 2: Azure IoT Central connector

Information about each machine produced must be transferred to Dynamics 365 Field Service.

The difference between IoT hub and IoT central is that IoT is an application platform that simplifies the creation of Internet of Things solutions. IoT central helps to reduce the challenges of implementing IoT development, operations, and management. IoT Central is a fully managed Software as a Service solution.

Note: There are three ways you can use to connect IoT-enabled devices into the Field Service solution:

? Connected Field Service for Azure IoT Central

? Connected Field Service for Azure IoT Hub

? Connected Field Service for non-Azure IoT providers using the extensible IoT provider framework

NEW QUESTION 17

HOTSPOT - (Topic 3)

You need to recommend components to meet the re-inspection requirements.

Which components should you recommend? To answer, select the appropriate options in the answer area.

NOTE: Each correct selection is worth one point.

Requirement

Component

Initiate the creation of re-inspection orders.

	▼
Dataflow	
Business rule	
Power Automate flow	

Automatically set overall inspection ratings based on the checklist ratings.

	▼
From event	
Business rule	
Custom action	
Rollup data type	

- A. Mastered
- B. Not Mastered

Answer: A

Explanation:

Box 1: Power Automate flow

Scenario: Inspection orders must be automatically marked for re-inspection should a machine fail inspection. The new inspection order must be created by using the originating inspection order as a template.

Box 2: Business rule

? By combining conditions and actions, you can do any of the following with business rules:

? Set column values

? Clear column values

- ? Set column requirement levels
- ? Show or hide columns
- ? Enable or disable columns
- ? Validate data and show error messages
- ? Create business recommendations based on business intelligence.

NEW QUESTION 21

HOTSPOT - (Topic 3)

You need to recommend solutions to meet the integration requirements.
What should you recommend? To answer, select the appropriate options in the answer area.
NOTE: Each correct selection is worth one point.

Requirement	Solution
View, assign, and resolve inspection bottlenecks.	<div><div></div><div>Booking rules</div><div>Schedule board</div><div>Proficiency models</div></div>
Automatically input measurement readings from inspection gauges	<div><div></div><div>Custom connector</div><div>Azure IoT Hub connector</div><div>Azure IoT Central connector</div><div>Microsoft Dataverse connector</div></div>

- A. Mastered
- B. Not Mastered

Answer: A

Explanation:

Box 1: Schedule board
Note: The Dynamics 365 Field Service schedule board provides an overview of resource availability and bookings you can make. When you're looking at the schedule board for the current day, you'll see a blue line that indicates the current time of day. You can also see a picture of all the resources listed on the schedule board. To quickly view contact information for a resource, hover over their name to view the contact card.



Box 2: Azure IoT Central connector
Azure IoT Central makes it easy to connect, monitor, and manage your IoT devices at scale. With the IoT Central V3 connector, you can trigger workflows when a rule has fired, and take actions by executing commands, updating properties, getting telemetry from devices, and more. Use this connector with your Azure IoT Central V3 application. This connector is available in the following products and regions:

Service	Class	Regions
Logic Apps	Standard	All Logic Apps regions  except the following: <ul style="list-style-type: none">- Azure Government regions- Azure China regions
Power Automate	Premium	All Power Automate regions except the following: <ul style="list-style-type: none">- US Government (GCC)- US Government (GCC High)- China Cloud operated by 21Vianet
Power Apps	Premium	All Power Apps regions except the following: <ul style="list-style-type: none">- US Government (GCC)- US Government (GCC High)- China Cloud operated by 21Vianet

NEW QUESTION 22

- (Topic 3)

You need to recommend an environment for the inspection solution. Where should you recommend installing the solution?

- A. within the Dynamics 365 Field Service environment
- B. in a separate Microsoft Dataverse environment in the same instance as the Dynamics 365 Field Service environment
- C. in a separate Dataverse environment with Dynamics 365 apps enabled
- D. within the default Dynamics 365 Field Service environment

Answer: A**NEW QUESTION 24**

- (Topic 4)

A large company experiences high staff turnover rates. As a result, the company must add or remove multiple system user accounts daily.

You need to recommend a security concept which will facilitate complex security profiles to entities for large groups of users across the Power Apps and Dynamics 365 applications. What should you recommend?

- A. Hierarchy security
- B. Field-level security
- C. User access management
- D. Team privileges

Answer: D**Explanation:**

User and team management is the area of Microsoft Dataverse where you can create and maintain user accounts and profiles.

A user is any person who works for a business unit who uses Dataverse. Each user has a user account.

A team is a group of users. Teams let users across an organization collaborate and share information.

Note: Why use Dataverse?

Easy to secure – Data is securely stored so that users can see it only if you grant them access. Role-based security allows you to control access to tables for different users within your organization.

Data from your Dynamics 365 applications is also stored within Dataverse, allowing you to quickly build apps

that use your Dynamics 365 data and extend your apps with Power Apps. Reference:

<https://docs.microsoft.com/en-us/powerapps/developer/data-platform/user-team-entities> <https://docs.microsoft.com/en-us/powerapps/maker/data-platform/data-platform-intro>

NEW QUESTION 28

HOTSPOT - (Topic 4)

A company uses Dynamics 365 Sales and Power BI.

Sales managers must be able to keep track of changes to their pipeline in the following ways:

- ? Notify the sales managers when an Opportunity changes sales stage.
- ? Notify the sales managers when the pipeline drops below 2.5M USD.
- ? When reviewing the pipeline in Power BI, a sales executive must be able to add a Playbook to an Opportunity.

You need to recommend a solution that meets the company requirements.

Which combination of solutions should you recommend? To answer, select the appropriate option in the answer area.

NOTE: Each correct selection is worth one point.

Notify the sales manager when an Opportunity changes sales stage.	<div>▼</div> <div>Microsoft Power Automate, Microsoft Dataverse connector, and Microsoft Office 365 Outlook connector</div> <div>Microsoft Power Automate, Microsoft Dataverse connector, and Microsoft Office 365 users</div> <div>Microsoft Power Automate, data alerts, and Microsoft Office 365 connector</div>
Notify the sales managers when the pipeline drops below 2.5 USD.	<div>▼</div> <div>Microsoft Power Automate, Microsoft Dataverse connector, and Microsoft Office 365 Outlook connector</div> <div>Microsoft Power Automate, Power BI data alerts, and Microsoft Office 365 connector</div> <div>Microsoft Power Automate, Power BI, Power Apps, and Microsoft Dataverse connector</div>
When reviewing the pipeline in Power BI, a sales executive must be able to add a Playbook to an Opportunity.	<div>▼</div> <div>Power BI, Power Apps, Microsoft Dataverse connector, and Microsoft Office 365 Outlook connector</div> <div>Microsoft Power Automate, Data alerts, Microsoft Dataverse connector, and Microsoft Office 365 users</div> <div>Microsoft Power Automate, Data alerts, and Microsoft Office 365 connector</div> <div>Microsoft Power Automate, Power BI, Power Apps, and Microsoft Dataverse connector</div>

- A. Mastered
B. Not Mastered

Answer: A

Explanation:

Box 1: Microsoft Power Automate, Microsoft Dataverse connector, and Microsoft 365 Outlook connector

Use Microsoft Dataverse as the data source.

While Power Automate is a robust tool with ever-expanding capabilities, it also handles simple tasks with grace. A universal business need for many organizations is the ability to automate email notifications based on certain criteria: an opportunity is won, send an email to the sales manager; a case is closed, send an email to the customer; a work order is completed, send an email to the customer.

Power Automate can easily accommodate this using the Microsoft 365 Outlook connector.

Box 2: Microsoft Power Automate, Power Bi data alerts, and Microsoft 365 connector Data alerts in the Power BI service: Set alerts to notify you when data in your dashboards changes beyond limits you set.

Box 3: Microsoft Power Automate, Power BI, Power Apps, and Microsoft Dataverse connector

NEW QUESTION 29

HOTSPOT - (Topic 4)

A company reports the following issues with an existing data management system.

? Users cannot search for specific records by using a user-friendly ID or record identifier.

? Users occasionally enter data into fields that is not required.

? The record form displays all fields. Many of the fields are not used.

You need to ensure that the Power Platform solution will ensure data quality can be properly maintained.

Which component should you use? To answer, select the appropriate options in the answer area.

NOTE: Each correct selection is worth one point.

Requirement	Solution
Ensure that users can search for specific records by using a unique identifier.	<div>▼</div> <div>Business rule</div> <div>Autonumber column</div> <div>Business process flow</div> <div>Duplicate detection rule</div>
You must prevent data entry into columns that do not require entry.	<div>▼</div> <div>Business rule</div> <div>Real time workflow</div> <div>Business process flow</div> <div>Duplicate detection rule</div>

Answer:

Requirement	Solution
Ensure that users can search for specific records by using a unique identifier.	<div>▼</div> <div>Business rule</div> <div>Autonumber column</div> <div>Business process flow</div> <div>Duplicate detection rule</div>
You must prevent data entry into columns that do not require entry.	<div>▼</div> <div>Business rule</div> <div>Real time workflow</div> <div>Business process flow</div> <div>Duplicate detection rule</div>

- A. Mastered
- B. Not Mastered

Answer: A

Explanation:

Box 1: Autonumber column
Autonumber columns are columns that automatically generate alphanumeric strings whenever they are created.
Box 2: Business rule
By combining conditions and actions, you can do any of the following with business rules:
? Enable or disable columns
? Set column values
? Clear column values
? Set column requirement levels
? Show or hide columns
? Validate data and show error messages
? Create business recommendations based on business intelligence.

NEW QUESTION 34

DRAG DROP - (Topic 4)
You are a Microsoft Power Platform architect reviewing requirements for an online shopping app.
You need to identify requirement types for the app.
How should you categorize the requirements? To answer, drag the appropriate categories to the correct requirements. Each category may be used once, more than once, or not at all. You may need to drag the split bar between panes or scroll to view content
NOTE; Each correct selection is worth one point.

Categories

Functional

Non-functional

Answer Area

Requirement

The app must automatically send a confirmation email to a customer when they place an order.

Credit card numbers must be encrypted.

Category

- A. Mastered
- B. Not Mastered

Answer: A

Explanation:

Categories

Functional

Non-functional

Answer Area

Requirement

The app must automatically send a confirmation email to a customer when they place an order.

Credit card numbers must be encrypted.

Category

Functional

Non-functional

NEW QUESTION 36

HOTSPOT - (Topic 4)
A company uses Power Pages for article submissions. The article properties are stored in a table in Microsoft Dataverse and the content of the article is stored in a related Microsoft SharePoint library. The company invites different experts outside its organization to review an article before publishing it. The reviewers are granted access to the articles in Microsoft Dataverse. The company has the following requirements:
• Provide a app to canvas the reviewers that exposes both the article properties and content in read-only mode.
• Once the review is completed, the reviewer saves the review data, and the article and the review no longer appear in the app.
You need to recommend the components to be used for each requirement. Which options should you use?
NOTE: Each correct selection is worth one point.

Requirement

Security configuration for reviewers

Access to the app

Option

Create a dedicated access team and add the reviewers to the team.

Create a dedicated access team and add the reviewers to the team.

Create a dedicated access team template and add it to the article record.

Create a dedicated owner team in the Microsoft Dataverse environment and add the reviewers to the team.

Create a dedicated Microsoft Teams channel with a security role for the article and add the reviewers as members.

Embed app in Power Pages portal.

Embed app in Power Pages portal.

Share app through the Power Apps maker portal.

Register app in Azure AD and email the registration link.

Publish the app in Power Apps Studio and email the link to the app.

- A. Mastered
- B. Not Mastered

Answer: A

Explanation:
Answer Area

Requirement	Option
Security configuration for reviewers	<div>Create a dedicated access team and add the reviewers to the team. Create a dedicated access team and add the reviewers to the team. Create a dedicated access team template and add it to the article record. Create a dedicated owner team in the Microsoft Dataverse environment and add the reviewers to the team. Create a dedicated Microsoft Teams channel with a security role for the article and add the reviewers as members.</div>
Access to the app	<div>Embed app in Power Pages portal. Embed app in Power Pages portal. Share app through the Power Apps maker portal. Register app in Azure AD and email the registration link. Publish the app in Power Apps Studio and email the link to the app.</div>

NEW QUESTION 39

- (Topic 4)

A company provides mobile diagnostic imaging services. You are designing a Power Apps solution to manage patient appointments and procedures. Patient records are stored within the company s cloud patient billing system. The patient ID must be the only information stored within the app. The patient name and date of birth must be visible to the technician to verify the patient's identity. You need to recommend a solution to display the patient information. What should you recommend?

- A. Virtual table
- B. Business rule
- C. Privacy preference
- D. Data gateway
- E. Custom dataflow

Answer: A

Explanation:

A virtual table is a custom table in Microsoft Dataverse that has columns containing data from an external data source. Virtual tables appear in your app to users as regular table rows, but contain data that is sourced from an external database, such as an Azure SQL Database. Rows based on virtual tables are available in all clients including custom clients developed using the Dataverse web services.

Reference:
<https://docs.microsoft.com/en-us/powerapps/maker/data-platform/create-edit-virtual-entities>

NEW QUESTION 40

- (Topic 4)

You are designing a database table for a client. You have the following requirements:
? Maintain a comprehensive list of colors and their corresponding RGB values and hexadecimal values.
? Prevent the addition of duplicate colors based on the hexadecimal value for the color.
You need to recommend a design for the table.
Which two actions should the client perform after the table is created? Each correct answer presents part of the solution.
NOTE: Each correct selection is worth one point.

- A. Mark the hex value column as business required.
- B. Configure and schedule a recurring bulk record deletion job.
- C. Create alternate keys for the table.
- D. Mark the RGB value column as business required.

Answer: CD

Explanation:

B: Setting a column to Business Required means that the default behavior of a model- driven or canvas app will enforce this requirement in the app.
C: With alternate keys you can now define a column in a Dataverse table to correspond to a unique identifier (or unique combination of columns) used by the external data store. This alternate key can be used to uniquely identify a record in Dataverse in place of the primary key. You must be able to define which columns represent a unique identity for your records. Once you identify the columns that are unique to the table, you can declare them as alternate keys through the customization user interface (UI) or in the code.

Reference:
<https://docs.microsoft.com/en-us/powerapps/maker/data-platform/create-edit-field-portal>
<https://docs.microsoft.com/en-us/powerapps/developer/data-platform/define-alternate-keys- entity>

NEW QUESTION 45

DRAG DROP - (Topic 4)

You are a Microsoft Power Platform architect.
You must identify and document your organization's business processes to identify opportunities for automaton.
You need to run task mining in process advisor.
In which order should you perform the actions? To answer, move all actions from the list of actions to the answer area and arrange them in the correct order.

Actions

Prepare processes and recordings.

Analyze processes.

Visualize processes.

Identify automation recommendations.

Share processes.

>

<

Answer area

<

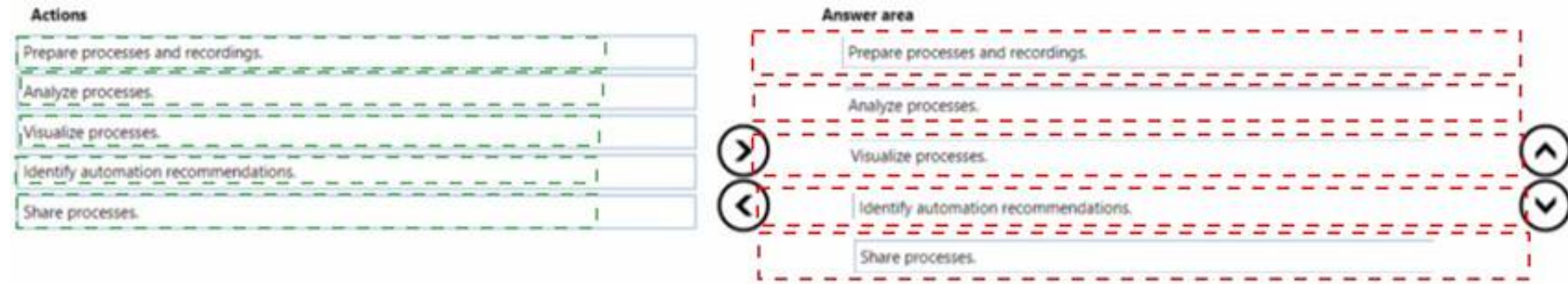
>

A. Mastered

B. Not Mastered

Answer: A

Explanation:



NEW QUESTION 47

- (Topic 4)

You are a Microsoft Power Platform solution architect working on a project. API calls are being sent between external applications and a Microsoft Power Platform solution.

The number of requests per user within a given time frame varies. Some users may be exceeding the service protection API limits.

You need to ensure that the API conforms to service protection limits.

Which three metrics should you review? Each correct answer presents part of the solution.

NOTE: Each correct selection is worth one point.

- A. The number of requests that a user can make each day.
- B. The total number of requests that can be processed each day.
- C. The number of concurrent requests that a user can make.
- D. The total execution time for requests by all users.
- E. The combined execution time required to process requests from a user.

Answer: ACE

Explanation:

Three types of service protection API limit errors that can be returned:

? Number of requests This limit counts the total number of requests during the preceding 300 second period.

? Execution time This limit tracks the combined execution time of incoming requests during the preceding 300 second period.

? Concurrent requests This limit tracks the number of concurrent requests. Reference:

<https://docs.microsoft.com/en-us/powerapps/developer/data-platform/api-limits>

NEW QUESTION 51

HOTSPOT - (Topic 4)

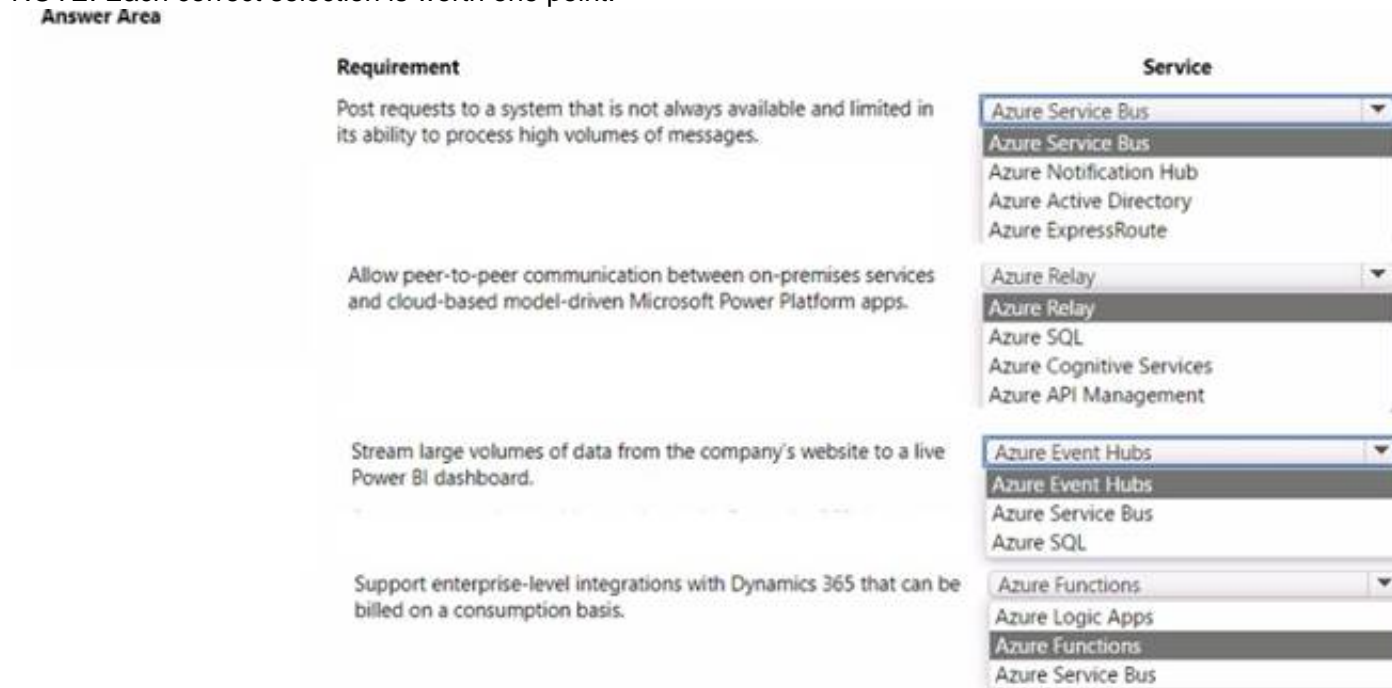
You are a Microsoft Power Platform architect designing integrations for a project. You have the following integration requirements:

- Post requests to a system that is not always available and limited in its ability to process high volumes of messages.
- Allow peer-to-peer communication between on-premises services and cloud-based model-driven Microsoft Power Platform apps.
- Stream large volumes of data from the company's website to a live Power BI dashboard.
- Support enterprise-level integrations with Dynamics 365 that can be billed on a consumption basis.

You need to use an Azure service for the integration requirements.

Which Azure services should you use? To answer, select the appropriate options in the answer area?

NOTE: Each correct selection is worth one point.



Answer:

Answer Area

Requirement

Post requests to a system that is not always available and limited in its ability to process high volumes of messages.

Allow peer-to-peer communication between on-premises services and cloud-based model-driven Microsoft Power Platform apps.

Stream large volumes of data from the company's website to a live Power BI dashboard.

Support enterprise-level integrations with Dynamics 365 that can be billed on a consumption basis.

Service

Azure Service Bus
Azure Service Bus
Azure Notification Hub
Azure Active Directory
Azure ExpressRoute

Azure Relay
Azure Relay
Azure SQL
Azure Cognitive Services
Azure API Management

Azure Event Hubs
Azure Event Hubs
Azure Service Bus
Azure SQL

Azure Functions
Azure Logic Apps
Azure Functions
Azure Service Bus

- A. Mastered
B. Not Mastered

Answer: A

NEW QUESTION 54

HOTSPOT - (Topic 4)

An organization is optimizing its Microsoft Power Platform solution architecture. The optimization needs to address the following:

? Label names for option sets and multiselect option sets should be added as

separate fields for reporting.

? Users complain that when a case is assigned to another user, all the activities are also assigned.

? Some Power BI reports based on Microsoft Dataverse data need near-real-time updating.

You need to recommend a design solution to meet these requirements.

What should you recommend? To answer, select the appropriate option in the answer area.

NOTE: Each correct selection is worth one point.

Requirement

Design

Users report that when a case is assigned to another user, all activities are also assigned.

For each activity entity relationship, set Cascading rules to Configurable Cascading and Assign to Cascade None
Do not implement, but train users on best practices for assigning cases.
Create a 1:N relationship between the user entity/table and the Activities table.

Some Power BI reports based on Microsoft Dataverse data require near-real-time updates.

Create Power BI reports using the Microsoft Dataverse connector.
Implement the Data Export Service; create Power BI reports that point to Microsoft Azure SQL Database.
Create Power BI dataflows based on the Microsoft Dataverse connector; point the Power BI report to the dataflows.

- A. Mastered
B. Not Mastered

Answer: A

Explanation:

Requirement

Design

Users report that when a case is assigned to another user, all activities are also assigned.

For each activity entity relationship, set Cascading rules to Configurable Cascading and Assign to Cascade None
Do not implement, but train users on best practices for assigning cases.
Create a 1:N relationship between the user entity/table and the Activities table.

Some Power BI reports based on Microsoft Dataverse data require near-real-time updates.

Create Power BI reports using the Microsoft Dataverse connector.
Implement the Data Export Service; create Power BI reports that point to Microsoft Azure SQL Database.
Create Power BI dataflows based on the Microsoft Dataverse connector; point the Power BI report to the dataflows.

NEW QUESTION 57

DRAG DROP - (Topic 4)

You need to recommend methods for assigning security to each group of users. The customer provides the following requirements:

? Customers need the ability to submit a case through an online portal.

? Portal must handle 75 concurrent users submitting cases.

? Service data must be retained for at least six years.

You need to determine which requirements are functional or non-functional.

Which requirements are functional or non-functional? To answer, drag the appropriate types to the correct requirements. Each type may be used once, more than once, or not at all. You may need to drag the split bar between panes or scroll to view content.

NOTE: Each correct selection is worth one point.

Types	Requirement	Type
Functional	Customers need the ability to submit a case through an online portal.	
Non-functional	Portal must handle 75 current users submitting cases.	
	Service data must be retained for at least six years.	

Answer:

Types	Requirement	Type
Functional	Customers need the ability to submit a case through an online portal.	Functional
Non-functional	Portal must handle 75 current users submitting cases.	Non-functional
	Service data must be retained for at least six years.	Non-functional

- A. Mastered
- B. Not Mastered

Answer: A

Explanation:

Box 1: Functional

Functional requirements describe what the solution needs to do or its behaviors.

Box 2: Non-functional

Non-functional requirements commonly describe non-behavior aspects of the solution such as performance requirements.

Box 3: Non-functional

Examples of common non-functional requirement types include:

- ? Availability
- ? Compliance/regulatory
- ? Data retention/residency
- ? Performance (response time, and so on)
- ? Privacy
- ? Recovery time
- ? Security
- ? Scalability

NEW QUESTION 62

- (Topic 4)

A company is implementing Dynamics 365 Sales.

The company has turned off out-of-the-box quote calculations in order to implement its own custom calculations.

When users update a line item on a quote, they expect to see an updated total for the quote in real time. Users are reporting inconsistent behavior, with some aggregations taking up to two hours.

You review the system design and notice many asynchronous workflows. You need to recommend a solution to enable the calculation in real time.

Which two options should you recommend? Each answer presents a complete solution. NOTE: Each correct selection is worth one point.

- A. Consolidate asynchronous workflow into a single real-time workflow.
- B. Consolidate multiple asynchronous workflows into a single asynchronous workflow.
- C. Implement a business process flow to replace the existing workflows.
- D. Convert the asynchronous workflows to a synchronous plug-in.

Answer: AB

Explanation:

NEW QUESTION 67

- (Topic 4)

You are designing a Microsoft Power Platform solution for a company that has multiple Microsoft Dataverse environments. You need to prevent specific users from accessing specific environments. What should you do?

- A. Remove all security roles from the users of the specific environments.
- B. Remove the user from the business unit.
- C. Remove the user from all security groups.
- D. Remove the user from all teams.

Answer: A

Explanation:

Microsoft Dataverse uses a role-based security model to help secure access to the database. Security roles can be used to configure environment-wide access to all resources in the environment.

Reference:

<https://docs.microsoft.com/en-us/power-platform/admin/database-security>

NEW QUESTION 72

- (Topic 4)

A client uses Dynamics 365 Sales, Power BI datasets, and Power BI dataflows.

The Dynamics 365 Sales implementation has security roles that restrict data export. You need to ensure that data has the same restrictions in Power BI as it does in Dynamics 365 Sales.

You need to design the security to avoid sensitive data from being seen.

Which two actions should you recommend? Each correct answer presents part of the solution.

NOTE: Each correct selection is worth one point.

- A. Use Microsoft Dataverse restrictions before setting up the Power BI reports.
- B. Limit the role in Dynamics 365 Sales to only data allowed so it cannot be exported to Microsoft Excel.
- C. Limit the role and ensure that exporting to Microsoft Excel is not allowed in both Dynamics 365 Sales and Power BI.
- D. Share Power BI dashboards only with users who are supported to see this data.

Answer: AB

Explanation:

A: When you share a dashboard or report, the people you share it with can view it and interact with it, but can't edit it. They see the same data that you see in the dashboard and reports and get access to the entire underlying dataset unless row-level security (RLS) is applied to the underlying dataset.

B: Depending on the sensitivity of an organization's data, it is often necessary to disable the ability to export or print reports.

Reference:

<https://docs.microsoft.com/en-us/power-bi/collaborate-share/service-share-dashboards>

NEW QUESTION 74

DRAG DROP - (Topic 4)

You are designing a business strategy for a client who has a Power Platform solution. The client works with critical data where any data loss creates a high risk.

You need to document the failover process for the stakeholders.

Which four actions should you perform in sequence? To answer, move the appropriate actions from the list of actions to the answer area and arrange them in the correct order.

Actions

Answer Area

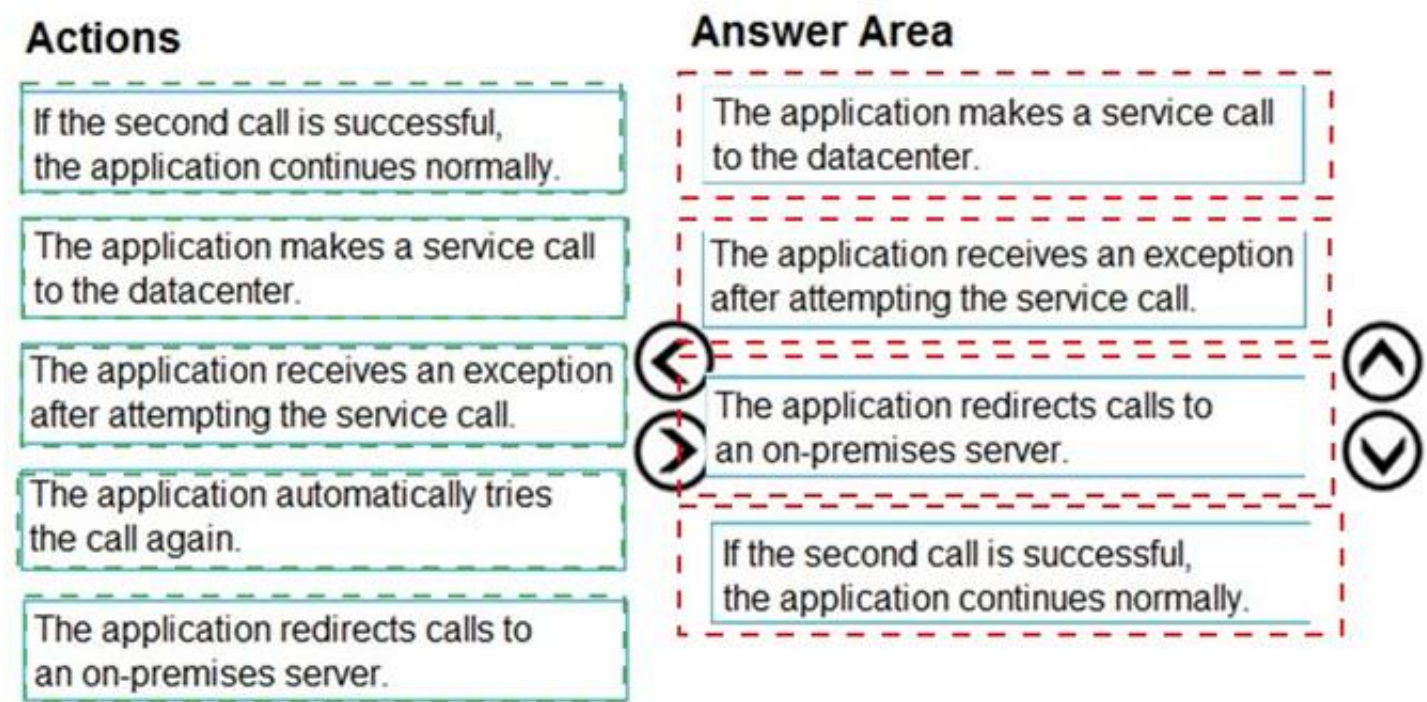
- If the second call is successful, the application continues normally.
- The application makes a service call to the datacenter.
- The application receives an exception after attempting the service call.
- The application automatically tries the call again.
- The application redirects calls to an on-premises server.



- A. Mastered
- B. Not Mastered

Answer: A

Explanation:



NEW QUESTION 78

HOTSPOT - (Topic 4)

You are performing a fit gap requirements analysis.

You need to select Microsoft Power Platform components to satisfy the requirements. Which components should you use? To answer, select the appropriate options in the answer area.

NOTE: Each correct selection is worth one point.

Answer Area

Requirement	Component
Coordinate long-term end-to-end delivery of financial counseling services to farmers.	<div>Model-driven app</div> <div>Model-driven app</div> <div>Power Virtual Agents</div> <div>Dynamics 365 Customer Voice</div>
Manage project accounting and recognize revenue compliant with international financial reporting standards.	<div>Dynamics 365 Finance</div> <div>Dynamics 365 Project Operations</div> <div>Dynamics 365 Field Service</div> <div>Dynamics 365 Finance</div>
Notify users of their overdue tasks on a daily basis.	<div>Power Automate</div> <div>Power Automate</div> <div>Power Virtual Agents</div> <div>AppSource</div>
Notify users of their overdue tasks on a daily basis.	<div>Power Automate</div> <div>Power Automate</div> <div>Power Virtual Agents</div> <div>AppSource</div>

A. Mastered

B. Not Mastered

Answer: A

Explanation:

Answer Area

Requirement	Component
Coordinate long-term end-to-end delivery of financial counseling services to farmers.	<div>Model-driven app</div> <div>Model-driven app</div> <div>Power Virtual Agents</div> <div>Dynamics 365 Customer Voice</div>
Manage project accounting and recognize revenue compliant with international financial reporting standards.	<div>Dynamics 365 Finance</div> <div>Dynamics 365 Project Operations</div> <div>Dynamics 365 Field Service</div> <div>Dynamics 365 Finance</div>
Notify users of their overdue tasks on a daily basis.	<div>Power Automate</div> <div>Power Automate</div> <div>Power Virtual Agents</div> <div>AppSource</div>
Notify users of their overdue tasks on a daily basis.	<div>Power Automate</div> <div>Power Automate</div> <div>Power Virtual Agents</div> <div>AppSource</div>

NEW QUESTION 81

- (Topic 4)

A company is struggling to gather insights from won and lost opportunities.

Users must be able to access the company's solution from mobile and desktop devices. The solution must meet the following requirements:

- Track opportunities and reasons for the win or loss of opportunities in the context of other related data.
- Display data to users as charts and tables and provide drill-through capabilities.

You need to recommend a Microsoft Power Platform tool to help the client visualize the data. Which two technologies should you recommend? Each correct answer presents a complete solution. NOTE: Each correct selection is worth one point.

- A. Power BI
- B. Power Virtual Agents
- C. Power Apps
- D. Power Automate

Answer: AC

NEW QUESTION 82

HOTSPOT - (Topic 4)

An animal welfare organization wants to track the movement of wolf packs in a region. Cameras at specific locations capture images when motion is detected within the camera sensor range. Staff upload the images manually to a shared drive and then analyze the images.

The organization wants to automate image capture and analysis. The organization has the following requirements:

? Save captured images in an appropriate location.

? Analyze saved images by using an image recognition process.

? Display data in real-time dashboards.

You need to recommend the correct technology for the requirements.

What should you recommend? To answer, select the appropriate options in the answer area.

NOTE: Each correct selection is worth one point.

Requirement	Technology option
Save captured images in an appropriate location.	<div><div>▼</div><div>Business process flow</div><div>Desktop flow</div><div>Instant cloud flow</div><div>Automated cloud flow</div></div>
Analyze saved images by using an image recognition process.	<div><div>▼</div><div>Instant cloud flow and AI Builder</div><div>Automated cloud flow and AI Builder</div><div>Desktop flow and AI Builder</div></div>
Display data in real-time dashboards.	<div><div>▼</div><div>Dynamics 365 interactive experience dashboard</div><div>Model-driven app dashboard with native graphs</div><div>Model-driven app dashboard with Power BI</div></div>

- A. Mastered
- B. Not Mastered

Answer: A

Explanation:

Box 1: Automated cloud flow.

Create a cloud flow when you want your automation to be triggered either automatically, instantly, or via a schedule.

Automated flows: Create an automation that is triggered by an event such as arrival of an email from a specific person, or a mention of your company in social media.

Box 2: Desktop flow and AI Builder

Desktop flows are used to automate tasks on the Web or the desktop. Using Power Automate Desktop you can automate tasks on the desktop as well as the Web.

Box 3: Model-driven app dashboard with Power BI

The Power BI cloud service works with Microsoft Dataverse apps to provide a self-service analytics solution. Power BI automatically refreshes the app's data displayed.

NEW QUESTION 84

- (Topic 4)

A company sells antique books. The company stores data about book locations in an existing system by using the following database fields: Room, Shelf.

The company must import the data from the existing system into a Power Platform solution. Existing data into must be modified to match the design of the new solution.

You need to recommend a solution to combine the room and shelf fields into a single column during the import process.

Which tool should you recommend?

- A. Power Platform dataflows
- B. Data Import Wizard
- C. import from CSV
- D. Microsoft Excel Online

Answer: B

Explanation:

Dataverse includes a web application tool called Import Data Wizard. You use this tool to import data records from one or more comma-separated values (.csv), XML Spreadsheet 2003 (.xml), or text files.

Use transformation mapping to modify data before importing it. For example, split a full name that is contained in the source file into a first name and a last name to match the target columns for a table.

Note:

- ? To implement data import, you typically do the following:
- ? Create a comma-separated values (CSV), XML Spreadsheet 2003 (XMLSS), or text source file.
- ? Create a data map or use an existing data map.
- ? Create a comma-separated values (CSV), XML Spreadsheet 2003 (XMLSS), or text source file.
- ? Create a data map or use an existing data map.
- ? Associate an import file with a data map.
- ? Upload the content from a source file to the associated import file.
- ? Parse the import file.
- ? Transform the parsed data.
- ? Upload the transformed data into the target Dataverse server.

Reference:

<https://docs.microsoft.com/en-us/powerapps/developer/data-platform/import-data>

<https://docs.microsoft.com/en-us/powerapps/developer/data-platform/add-transformation-mappings-import>

NEW QUESTION 85

- (Topic 4)

You are designing a Microsoft Power Platform solution to help a company manage sales leads.

The solution has the following requirements:

- ? Ensure that users follow a predefined sales process regardless of the device that employees use to access the app.
- ? Respond to sales events by using organization-defined best practices.

You need to recommend a component for the app. What should you recommend?

- A. Power Automate cloud flow
- B. Business process flow
- C. Power Automate desktop flow
- D. Playbook

Answer: B

Explanation:

You can help ensure that people enter data consistently and follow the same steps every time they work with a customer by creating a business process flow. For example, you might want to create a business process flow to have everyone handle customer service requests the same way, or to require that people get approval for an invoice before submitting an order. Business process flows use the same underlying technology as other processes, but the capabilities that they provide are very different from other features that use processes.

Reference:

<https://docs.microsoft.com/en-us/power-automate/business-process-flows-overview>

NEW QUESTION 87

HOTSPOT - (Topic 4)

A company plans to create a Microsoft Power Platform solution that integrates with Dynamics 365 Sales. The solution must meet the following requirements:

- Connect directly with a Microsoft Azure SQL database as an external data source at run time where specific data is available in the Dynamics 365 Sales solution without the need for data replication.
- An external system needs to send data to the company's Dynamics 365 Sales solution. You need to recommend the most suitable solution to integrate Dynamics 365 Sales with both systems.

What should you recommend? To answer, select the appropriate option in the answer area.

Answer Area

Integration requirement	Solutions
Have read-only visibility of data from an external Azure SQL database.	<div>Use virtual tables. Use a custom plug-in. Use Dynamics 365 Web API. Use a web resource to display data.</div>
External system sends data to Dynamics 365 Sales.	<div>Use a custom plug-in. Use Dynamics 365 Web API. Use a web resource to display data.</div>

- A. Mastered
- B. Not Mastered

Answer: A

Explanation:

Answer Area

Integration requirement	Solutions
Have read-only visibility of data from an external Azure SQL database.	<div>Use virtual tables.</div> <div>Use a custom plug-in.</div> <div>Use Dynamics 365 Web API.</div> <div>Use a web resource to display data.</div>
External system sends data to Dynamics 365 Sales.	<div>Use a custom plug-in.</div> <div>Use Dynamics 365 Web API.</div> <div>Use a web resource to display data.</div>

NEW QUESTION 88

HOTSPOT - (Topic 4)

You are designing a Microsoft Power Platform solution for a national repair service. The service has a 24-hour call center for customers to call and schedule repairs. The solution dispatches a technician to troubleshoot and repair customer issues. Customers sign into a customer portal to view and log information concerning the repairs.

The repair service contracts with third party technicians for repair jobs The solution must meet the following requirements:

- Dispatch technicians to troubleshoot and repair customer issues
- Call center must log customer issues.
- Third -party technicians must be able to access assigned repair service jobs. You need to recommend an authentication strategy.

Which authentication models should you use? To answer, select the appropriate options in the answer area.

Answer Area

User type

Authentication model

Call center employee

Azure AD and a security role
Azure AD and a web role
Authenticated user and a security role
Authenticated user and a web role

Repair service customer

Azure AD and a security role
Azure AD and a web role
Authenticated user and a security role
Authenticated user and a web role

Third-party technician

Azure AD and a security role
Azure AD and a web role
Authenticated user and a security role
Authenticated user and a web role

- A. Mastered
B. Not Mastered

Answer: A

Explanation:

Answer Area

User type

Call center employee

Authentication model

<input checked="" type="checkbox"/>	Azure AD and a security role
<input type="checkbox"/>	Azure AD and a web role
<input type="checkbox"/>	Authenticated user and a security role
<input type="checkbox"/>	Authenticated user and a web role

Repair service customer

<input type="checkbox"/>	Azure AD and a security role
<input checked="" type="checkbox"/>	Azure AD and a web role
<input type="checkbox"/>	Authenticated user and a security role
<input type="checkbox"/>	Authenticated user and a web role

Third-party technician

<input type="checkbox"/>	Azure AD and a security role
<input type="checkbox"/>	Azure AD and a web role
<input type="checkbox"/>	Authenticated user and a security role
<input checked="" type="checkbox"/>	Authenticated user and a web role

NEW QUESTION 91

DRAG DROP - (Topic 4)

A company plans to integrate Microsoft Power Platform with existing systems, including Microsoft Dynamics 365 Omni channel for Customer Service.

You need to recommend a solution for each requirement.

Which components should you recommend for the requirements?

To answer, drag the appropriate solutions to the correct requirements. Each solution may be used once, more than once, or not at all. You may need to drag the split bar between panes or scroll to view content.

Solutions	Requirement	Solution
Custom API	Display information about the contact in the Omnichannel app.	
Custom pages	Ensure only tables needed are exposed for integration purposes.	
Microsoft Power Virtual Agent	Display data hierarchy from other systems within Dynamics 365 without saving the data within Microsoft Dataverse.	

- A. Mastered
- B. Not Mastered

Answer: A

Explanation:

Solutions	Requirement	Solution
Custom API	Display information about the contact in the Omnichannel app.	Microsoft Power Virtual Agent
Custom pages	Ensure only tables needed are exposed for integration purposes.	Custom API
Microsoft Power Virtual Agent	Display data hierarchy from other systems within Dynamics 365 without saving the data within Microsoft Dataverse.	Custom pages

NEW QUESTION 93

HOTSPOT - (Topic 4)

You are designing the security model for a Power Platform solution. The security model must meet the following requirements:

? Restrict sharing of data between Power Automate connectors.

? Ensure that environment administrators only see users who require access in the enabled user list.

You need to recommend security features for the solution.

What should you recommend? To answer, select the appropriate options in the answer area.

NOTE: Each correct selection is worth one point.

Requirement	Feature
Restrict sharing of data between Power Automate connectors	<div><div></div><div>Security group</div><div>Data loss prevention policy</div></div>
Ensure that environment administrators only see users who require access in the enabled user list.	<div><div></div><div>Security group</div><div>Data loss prevention policy</div></div>

Answer:

Requirement	Feature
Restrict sharing of data between Power Automate connectors	<div><div></div><div>Security group</div><div>Data loss prevention policy</div></div>
Ensure that environment administrators only see users who require access in the enabled user list.	<div><div></div><div>Security group</div><div>Data loss prevention policy</div></div>

- A. Mastered
B. Not Mastered

Answer: A

Explanation:

Box 1: Data loss prevention policy

Data loss prevention (DLP) policies enforce rules for which connectors can be used together by classifying connectors as either Business or Non-Business. If you put a connector in the Business group, it can only be used with other connectors from that group in any given app or flow. Sometimes you might want to block the usage of certain connectors altogether by classifying them as Blocked.

Box 2: Security group

If your company has multiple Microsoft Dataverse environments, you can use security groups to control which licensed users can be a member of a particular environment.

NEW QUESTION 96

HOTSPOT - (Topic 4)

You are designing a model-driven app that provides marketing, sales, and service operations to a company.

The app must integrate with the following systems and data sources:

- A third-party marketing system for lead generation and website submissions.
- A Microsoft Excel Online file that contains manufacturing data on relevant products.
- A separate Microsoft Dataverse environment.

You need to recommend Power Automate connectors for the app.

Which connections should you recommend? To answer, select the appropriate options in the answer area.

NOTE: Each correct selection is worth one point.

Answer Area

Data source	Connector type
Third-party marketing system	<div><div></div><div>Power BI connector</div><div>SharePoint connector</div><div>Custom connector</div><div>Microsoft Forms connector</div></div>
Microsoft Dataverse environment	<div><div></div><div>SharePoint</div><div>Azure Data Factory</div><div>Microsoft Dataverse</div></div>

- A. Mastered
B. Not Mastered

Answer: A

Explanation:

Box 1: Custom connector

While Azure Logic Apps, Microsoft Power Automate, and Microsoft Power Apps offer over 325+ connectors to connect to Microsoft and non-Microsoft services, you

may want to communicate with services that aren't available as prebuilt connectors.

Box 2: Microsoft Dataverse

The Microsoft Dataverse connector provides several triggers to start your flows and many actions that you can use to create or update data in Dataverse while your flows run. You can use Dataverse actions even if your flows don't use a trigger from the Dataverse connector.

Use the Microsoft Dataverse connector to create cloud flows that start when data changes in Dataverse tables and custom messages.

NEW QUESTION 99

- (Topic 4)

You are a Power Platform consultant for an internet support company. The company lacks a budget to buy third-party ISVs or add-ons.

The company requires a new system that achieves the following:

? All support issues must come in by email, need to be logged, and assigned to the support group.

? Accounts must synchronize with the parent company Oracle database.

? Reports must be sent to the executives on a weekly basis.

? No custom code will be used in the system.

You need to recommend the components that should be configured.

Which two components should you recommend? Each correct answer presents part of the solution.

NOTE: Each correct selection is worth one point.

- A. Power Virtual Agents
- B. Microsoft Dataverse
- C. server-side synchronization
- D. Microsoft Customer Voice

Answer: BD

Explanation:

The Dynamics 365 Customer Voice data is stored in Microsoft Dataverse.

Dynamics 365 Customer Voice is an enterprise feedback management application you can use to easily keep track of the customer metrics that matter the most to your business. ... It provides a personalized experience, enabling you to collect customer feedback and get relevant insights quickly and easily, all in a few clicks.

Reference:

<https://docs.microsoft.com/en-us/dynamics365/customer-voice/about> <https://docs.microsoft.com/en-us/dynamics365/customer-voice/data-flow>

NEW QUESTION 100

DRAG DROP - (Topic 4)

A company plans to integrate a model-driven app with external data sources. The company has the following requirements:

- Consume data in its data warehouse from Microsoft Dataverse.

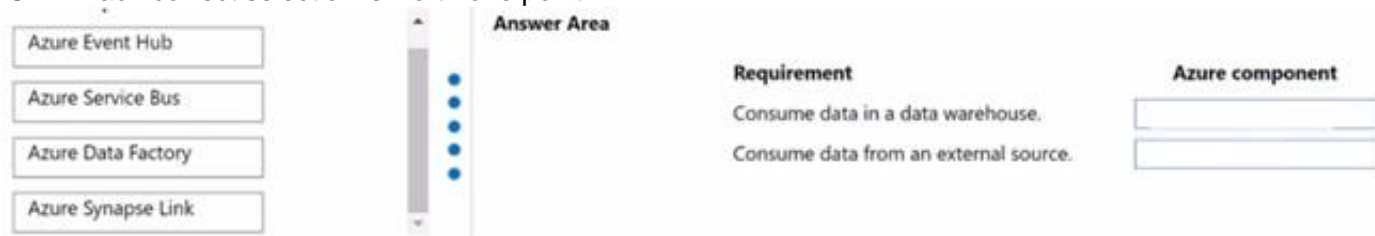
- Use a plug-in to retrieve information from an external service.

You need to recommend a Microsoft Azure component for each requirement.

Which Azure components should you recommend? To answer, drag the appropriate Azure components to the correct requirements.

Each Azure component may be used once, more than once, or not at all. You may need to drag the split bar between panes or scroll to view content.

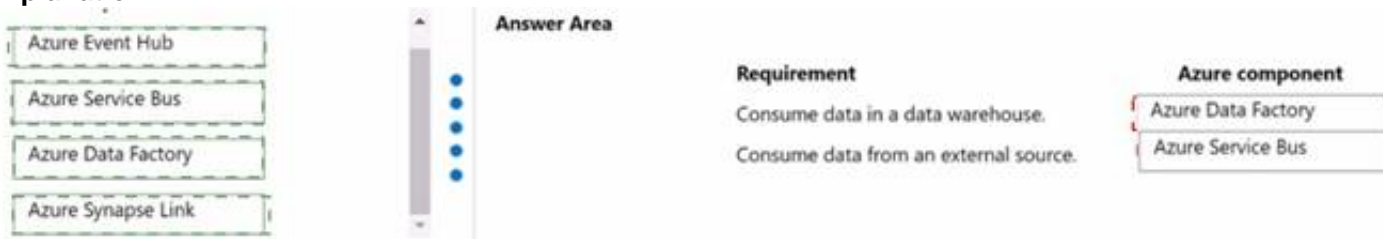
NOTE: Each correct selection is worth one point.



- A. Mastered
- B. Not Mastered

Answer: A

Explanation:



NEW QUESTION 105

HOTSPOT - (Topic 4)

You are working with a customer to plan a go-live deployment to their production environment. The solution includes several apps and environment variables. The superuser team manages the production environment that is secured by using a specific environment Azure AD security group.

The following issues have been identified:

- The super user team cannot access make.powerapps.com to open and set the environment variables.

- Users are added to the environment Azure AD security group and are not able to access the model-driven app.

- Users are added to the environment Azure AD security group and are not able to access the canvas app.

You need to resolve the issues.

What should you do? To answer, select the appropriate options in the answer area. NOTE: Each correct selection is worth one point.

Answer Area

Issue	Resolution
The superuser team cannot set the environment variables.	<div>Assign the System Customizer role.</div> <div>Assign the System Customizer role.</div> <div>Assign the Basic User role.</div> <div>Assign the Service Reader role.</div> <div>Assign the Office Collaborator role.</div>
Users cannot access the model-driven app.	<div>Assign the Basic User role.</div> <div>Assign the Basic User role.</div> <div>Assign the Service Reader role.</div> <div>Assign the Office Collaborator role.</div> <div>Add the Azure AD Security Group.</div>
Users cannot access the canvas app.	<div>Add users to an Azure AD Security Group.</div> <div>Assign the System Customizer role.</div> <div>Assign the Service Reader role.</div> <div>Add users to the superuser team.</div> <div>Add users to an Azure AD Security Group.</div>

- A. Mastered
B. Not Mastered

Answer: A

Explanation:

Answer Area

Issue	Resolution
The superuser team cannot set the environment variables.	<div>Assign the System Customizer role.</div> <div>Assign the System Customizer role.</div> <div>Assign the Basic User role.</div> <div>Assign the Service Reader role.</div> <div>Assign the Office Collaborator role.</div>
Users cannot access the model-driven app.	<div>Assign the Basic User role.</div> <div>Assign the Basic User role.</div> <div>Assign the Service Reader role.</div> <div>Assign the Office Collaborator role.</div> <div>Add the Azure AD Security Group.</div>
Users cannot access the canvas app.	<div>Add users to an Azure AD Security Group.</div> <div>Assign the System Customizer role.</div> <div>Assign the Service Reader role.</div> <div>Add users to the superuser team.</div> <div>Add users to an Azure AD Security Group.</div>

NEW QUESTION 108

HOTSPOT - (Topic 4)

You are evaluating a solution design. You need to test the following scenarios: Mimic a user using an app.

- Obtain formal approval that an app meets customer-provided criteria.
- Confirmation that an app can manage expected peak loads.

Which test types should you use? To answer, select the appropriate options in the answer area.

NOTE: Each correct selection is worth one point.

Answer Area

Scenario	Test type
Mimic a user using an app.	<div>Acceptance testing</div> <div>UI testing</div> <div>Acceptance testing</div> <div>Performance testing</div> <div>Load testing</div>
Obtain formal approval that an app meets customer-provided criteria.	<div>Acceptance testing</div> <div>Migration testing</div> <div>Acceptance testing</div> <div>Performance testing</div> <div>UI testing</div>
Confirmation that an app can manage expected peak loads.	<div>Performance testing</div> <div>Unit testing</div> <div>Acceptance testing</div> <div>Performance testing</div> <div>Integration testing</div>

Answer:

Answer Area

Scenario

Mimic a user using an app.

Test type

Acceptance testing
UI testing
Acceptance testing
Performance testing
Load testing

Obtain formal approval that an app meets customer-provided criteria.

Acceptance testing
Migration testing
Acceptance testing
Performance testing
UI testing

Confirmation that an app can manage expected peak loads.

Performance testing
Unit testing
Acceptance testing
Performance testing
Integration testing

- A. Mastered
- B. Not Mastered

Answer: A

NEW QUESTION 110

- (Topic 4)

Note: This question is part of a series of questions that present the same scenario. Each question in the series contains a unique solution that might meet the stated goals. Some question sets might have more than one correct solution, while others might not have a correct solution.

After you answer a question in this section, you will NOT be able to return to it. As a result, these questions will not appear in the review screen.

A company uses a Microsoft Excel sheet to manage its loan application process. The company wants to optimize the process.

You need to discover inefficiencies in the process.

Solution: Upload the activity data stored in the Excel sheet to the process advisor feature. Use process mining to discover inefficiencies in the process.

Does the solution meet the goal?

- A. Yes
- B. No

Answer: B

NEW QUESTION 114

HOTSPOT - (Topic 4)

A company plans to use a combination of model-driven and canvas apps for data interaction and Power BI for data reporting. The company has the following requirements:

- Share a canvas app with the auditor team.
- Ensure account balance values in Power BI are only viewable by the investment team.
- Streamline user administration and role assignment.

You need to recommend a security component to use for each requirement.

Which security components should you recommend? To answer, select the appropriate options in the answer area.

NOTE: Each correct selection is worth one point.

Answer Area

Requirement

Share a canvas app.

Security component

Microsoft Entra ID security group
Security roles
Column-level security
Manager hierarchy model
Microsoft Entra ID security group

Control account balance visibility.

Report access
Report access
Column-level security
Microsoft Entra ID security group

Streamline user administration and role assignment.

Manager hierarchy model
Security roles
Column-level security
Manager hierarchy model
Microsoft Entra ID security group

Answer:

Answer Area

Requirement	Security component
Share a canvas app.	<div>Microsoft Entra ID security group</div> <div>Security roles</div> <div>Column-level security</div> <div>Manager hierarchy model</div> <div>Microsoft Entra ID security group</div>
Control account balance visibility.	<div>Report access</div> <div>Report access</div> <div>Column-level security</div> <div>Microsoft Entra ID security group</div>
Streamline user administration and role assignment.	<div>Manager hierarchy model</div> <div>Security roles</div> <div>Column-level security</div> <div>Manager hierarchy model</div> <div>Microsoft Entra ID security group</div>

- A. Mastered
- B. Not Mastered

Answer: A

NEW QUESTION 116

- (Topic 4)

You are designing a Power Platform solution for a company. Users must be granted access only to data that is relevant to them. You need to recommend actions to meet the requirements. Which two recommendations should you make? Each correct answer presents part of the solution. NOTE: Each correct selection is worth one point.

- A. Add column security profiles to applicable teams.
- B. Define and configure security roles.
- C. Create teams and assign security roles and users to the teams.
- D. Create business units and assign security roles to the business units.

Answer: BD

Explanation:

To control data access, you must set up an organizational structure that both protects sensitive data and enables collaboration. You do this by setting up business units, security roles, and field security profiles. Reference: <https://docs.microsoft.com/en-us/power-platform/admin/security-roles-privileges>

NEW QUESTION 119

- (Topic 4)

A company wants to add an interactive checklist to a Power Platform solution to ensure that salespeople are following the same steps when qualifying leads. You need to recommend a solution that will incorporate this checklist. What should you recommend?

- A. Mastered
- B. Not Mastered

Answer: A

NEW QUESTION 124

HOTSPOT - (Topic 4)

A company offers continuing education courses for medical professionals. Each time a course is offered, the company tracks that the session has taken place in an Excel workbook. The company maintains a list of required qualifications for an educator to teach a course. Educator qualifications range from languages spoken to advanced degrees. The company needs the following custom table relationships defined: ? Associate educators with a list of their professional qualifications. ? Assign a primary educator to each course that is held. ? Collect information about every course that is held. You need to determine the type of relationship that best fits the requirement. Which type of table relationship should you use? To answer, select the appropriate options in the answer area. NOTE: Each correct selection is worth one point.

Requirement	Relationship
Educators must be associated with their qualifications.	<div>▼</div> <div>Many-to-many relationship that uses a system generated table</div> <div>Many-to-many relationship that uses a custom table</div> <div>One-to-many relationship</div>
When a course is held there must be a primary educator assigned.	<div>▼</div> <div>Many-to-many relationship that uses a system generated table</div> <div>Many-to-many relationship that uses a custom table</div> <div>One-to-many relationship</div>
When a course is held, the company needs to collect information on that session.	<div>▼</div> <div>Many-to-many relationship that uses a system generated table</div> <div>Many-to-many relationship that uses a custom table</div> <div>One-to-many relationship</div>

- A. Mastered
 B. Not Mastered

Answer: A

Explanation:

Requirement	Relationship
Educators must be associated with their qualifications.	<div>▼</div> <div>Many-to-many relationship that uses a system generated table</div> <div>Many-to-many relationship that uses a custom table</div> <div>One-to-many relationship</div>
When a course is held there must be a primary educator assigned.	<div>▼</div> <div>Many-to-many relationship that uses a system generated table</div> <div>Many-to-many relationship that uses a custom table</div> <div>One-to-many relationship</div>
When a course is held, the company needs to collect information on that session.	<div>▼</div> <div>Many-to-many relationship that uses a system generated table</div> <div>Many-to-many relationship that uses a custom table</div> <div>One-to-many relationship</div>

NEW QUESTION 129

HOTSPOT - (Topic 4)

You are designing a Microsoft Power Platform solution for a company.

Which components should you recommend? To answer, select the appropriate options in the answer area.

NOTE: Each correct selection is worth one point.

Requirement	Component
Allow users to change the status of a record only if a custom column named Reason is populated.	<div>▼</div> <div>Business rule</div> <div>Power Automate flow</div> <div>Asynchronous plug-in</div> <div>Background workflow</div>
Prompt users to update each opportunity product record when an opportunity is won or lost.	<div>▼</div> <div>JavaScript code</div> <div>Real-time workflow</div> <div>Power Automate flow</div> <div>Asynchronous plug-in</div>

- A. Mastered
 B. Not Mastered

Answer: A

Explanation:

Box 1: Business rule

You can create business rules and recommendations to apply logic and validations without writing code or creating plug-ins. Business rules provide a simple interface to implement and maintain fast-changing and commonly used rules.

Box 2: Power Automate flow

Trigger the Power Automate flow with “When a record is updated”, then add a Condition in the flow and configure it with Status Label equals to Won.

NEW QUESTION 130

- (Topic 4)

You are evaluating a solution design for a model-driven app that will have a large number of complex forms.

Many of the forms take up to 10 seconds to load.

You need to recommend solution to speed up loading times for the forms.

Which two solutions should you recommend? Each correct answer presents a complete solution.

NOTE: Each correct selection is worth one point.

- A. Consolidate and reduce scripts.
- B. Use synchronous JavaScript requests.
- C. Move scripts into the OnLoad event.
- D. Remove unnecessary fields.

Answer: AD

Explanation:

Controls that require extra data beyond the primary record produce the most strain on form responsiveness and loading speed. These controls fetch data over the network and often involve a waiting period (seen as progress indicators) because it can take time to transmit the data.

Keep only the most frequently used of these controls on the default tab.

Reference:

<https://docs.microsoft.com/en-us/powerapps/maker/model-driven-apps/design-performant-forms>

NEW QUESTION 135

- (Topic 4)

You are designing a model-driven app that allows a company to manage sales opportunities.

The company has a complex security model that includes the following requirements:

? The vice president of sales must be able to see opportunities for sales managers and sales representatives.

? Sales managers must be able to see opportunities for all sales representatives.

? Sales representatives must only see opportunities that they own.

You need to recommend security tools for controlling user access.

Which two tools should you recommend? Each correct answer presents part of the solution.

NOTE: Each correct selection is worth one point.

- A. Account hierarchy
- B. Field security profile
- C. Position hierarchy
- D. Security roles

Answer: CD

Explanation:

With the position hierarchy security, a user at a higher position has access to the records owned by a lower position user or by the team that a user is a member of, and to the records that are directly shared to the user or the team that a user is a member of.

The hierarchy security model is an extension to the earlier security models that use business units, security roles, sharing, and teams. It can be used in conjunction with all other existing security models.

Reference:

<https://docs.microsoft.com/en-us/dynamics365/customerengagement/on-premises/developer/security-dev/hierarchical-security-control-access-entities>

NEW QUESTION 139

DRAG DROP - (Topic 4)

You are a Microsoft Power Platform solution architect capturing requirements for a national retail chain protect. The project has the following requirements

- Retail employees must use the application on a company-provided tablet device.
- The app must store data offline
- Environment capacity must be monitored to ensure usage stays within 80 percent of available capacity
- Apps are shared with security group teams for users to access.

You need to identify the project's functional and non-functional requirements.

How should you categorize the requirements? To answer, drag the appropriate categories to the correct requirements. Each category may be used once, more than once, or not at all. You may need to drag the split bar between panes or scroll to view content.

Categories	Requirement	Category
Functional	Retail employees must use the application on a company-provided tablet device.	
Non-functional	The app must store data offline.	
	Environment capacity must be monitored to ensure usage stays within 80 percent of available capacity.	
	Apps are shared with security group teams for users to access.	

Answer:

Categories		Requirement	Category
Functional	<div></div> <div></div> <div></div> <div></div>	Retail employees must use the application on a company-provided tablet device.	Functional
Non-functional		The app must store data offline.	Functional
		Environment capacity must be monitored to ensure usage stays within 80 percent of available capacity.	Non-functional
		Apps are shared with security group teams for users to access.	Non-functional

- A. Mastered
B. Not Mastered

Answer: A

NEW QUESTION 141

DRAG DROP - (Topic 4)

You are designing a Microsoft Power Platform solution that will be deployed to two separate companies in the same Microsoft Office 365 tenant: Contoso, Ltd. and Contoso Pharmaceuticals.

The solution must meet the following security requirements:

- Restrict Contoso, Ltd. users from seeing the Contoso Pharmaceuticals company.
- Restrict access to specific forms.
- Restrict access to specific tables.

What should you recommend? To answer, drag the appropriate security types to the correct restrictions. Each security type may be used once, more than once, or not at all. You may need to drag the split bar between panes or scroll to view content.

NOTE: Each correct selection is worth one point.

Security objects		Restriction	Security object
Security role	<div></div> <div></div> <div></div> <div></div>	Restrict Contoso, Ltd. users from seeing the Contoso Pharmaceuticals company.	
Team		Restrict access to specific forms.	
Security group		Restrict access to specific tables.	
User profile			

Answer:

Security objects		Restriction	Security object
Security role	<div></div> <div></div> <div></div> <div></div>	Restrict Contoso, Ltd. users from seeing the Contoso Pharmaceuticals company.	Team
Team		Restrict access to specific forms.	Security group
Security group		Restrict access to specific tables.	Security role
User profile			

- A. Mastered
B. Not Mastered

Answer: A

NEW QUESTION 144

- (Topic 4)

Note: This question is part of a series of questions that present the same scenario. Each question in the series contains a unique solution that might meet the stated goals. Some question sets might have more than one correct solution, while others might not have a correct solution.

After you answer a question in this section, you will NOT be able to return to it. As a result, these questions will not appear in the review screen.

A company plans to automate the expense approval process.

Users currently enter data into an on-premises SQL Server database. You need to allow users to submit expenses from mobile devices.

Solution: Create a canvas app for expense data entry. Install an on-premises gateway. Create a cloud flow for approval and to add data to the SQL Server database.

Does the solution meet the goal?

- A. Yes
B. No

Answer: A

NEW QUESTION 148

HOTSPOT - (Topic 4)

A multinational organization uses a single Microsoft Power Platform environment. The instance hosts multiple customizations for different users in different regions.

Users in some regions complain about slow load time of the customizations. You need to architect a solution based on the main requirement.

What should you recommend? To answer, select the appropriate option in the answer area.

NOTE: Each correct selection is worth one point.

Answer Area

Goal	Suggested solution
Divisions actively collaborate on customers.	Single instance; use Microsoft Azure Traffic Manager where needed Multi-tenant with one Power Platform environment in each region Multiple instances in different regions; Power BI for reporting Single multi-geo instance
Regions have separate customers but use the same functionality and need global reporting.	Multiple instances in different regions with data replication Multi-tenant with one Power Platform environment in each region Multiple instances in different regions; Power BI for reporting Single multi-geo instance
Regions have separate functionality and customers but need global reporting on data.	Single instance; use Microsoft Azure Traffic Manager Multi-tenant with one Power Platform environment in each region Multiple instances in different regions; Power BI for reporting Single multi-geo instance

- A. Mastered
B. Not Mastered

Answer: A

Explanation:

Answer Area

Goal	Suggested solution
Divisions actively collaborate on customers.	Single instance; use Microsoft Azure Traffic Manager where needed Multi-tenant with one Power Platform environment in each region Multiple instances in different regions; Power BI for reporting Single multi-geo instance
Regions have separate customers but use the same functionality and need global reporting.	Multiple instances in different regions with data replication Multi-tenant with one Power Platform environment in each region Multiple instances in different regions; Power BI for reporting Single multi-geo instance
Regions have separate functionality and customers but need global reporting on data.	Single instance; use Microsoft Azure Traffic Manager Multi-tenant with one Power Platform environment in each region Multiple instances in different regions; Power BI for reporting Single multi-geo instance

NEW QUESTION 151

- (Topic 4)

Note: This question is part of a series of questions that present the same scenario. Each question in the series contains a unique solution that might meet the stated goals. Some question sets might have more than one correct solution, while others might not have a correct solution.

After you answer a question in this section, you will NOT be able to return to it. As a result, these questions will not appear in the review screen.

A company plans to automate the expense approval process.

Users currently enter data into an on-premises SQL Server database. You need to allow users to submit expenses from mobile devices.

Solution: Create a canvas app for expense data entry. Create a desktop flow. Create a cloud flow for approval and trigger the desktop flow to add data to the SQL Server database.

Does the solution meet the goal?

- A. Yes
B. No

Answer: B

NEW QUESTION 156

- (Topic 4)

You are designing a Microsoft Power Platform solution.

You need to identify the non-functional requirements for the organization.

Which three non-functional requirements should you identify? Each correct answer presents a complete solution.

NOTE: Each correct selection is worth one point.

- A. usability of business process flows
B. customer maintenance procedures
C. business rules to identify top customers
D. solution regulatory compliance
E. time-to-load forms

Answer: BDE

Explanation:

Non-functional requirements capture the elements that users might not directly care about but are important to support the proposed architecture and operational viability of the solution. Non-functional requirements often influence user adoption and perceived satisfaction with the solution.

Examples of common non-functional requirement types include:

? Availability

? Compliance/regulatory

? Data retention/residency

? Performance (response time, and so on)

? Privacy
? Recovery time
? Security
? Scalability

Reference:

<https://docs.microsoft.com/en-us/learn/modules/work-with-requirements/4-non-functional-requirements>

NEW QUESTION 158

- (Topic 4)

You are designing a solution for a national vehicle repair company. You have the following requirements:

- Customers must search for vehicle issues by using natural language expressions.
- Customers must contact a customer service agent as required. You need to recommend a solution.

Which two features should you include? Each correct answer presents part of the solution.

- A. Power Virtual Agents
- B. Business process flow
- C. Power Apps portal
- D. Customer Insights

Answer: BC

NEW QUESTION 163

- (Topic 4)

You are designing a Power Platform solution.

During quality assurance testing the API limits are reached. You need to identify and resolve the issue.

Which two actions should you recommend? Each correct answer presents part of the solution.

NOTE: Each correct selection is worth one point.

- A. Allocate Microsoft Dataverse capacity add-on subscriptions.
- B. Use the out-of-the-box User Summary report from the Reports section of the solution's model-driven app.
- C. In the Power Platform admin center Review the Home tab Dataverse analytics dashboard.
- D. In the Power Platform admin center, review the Usage section of the Power Apps analytics dashboard.
- E. In the Power Platform admin center, review the Runs section of the Power Automate analytics dashboard.

Answer: AC

Explanation:

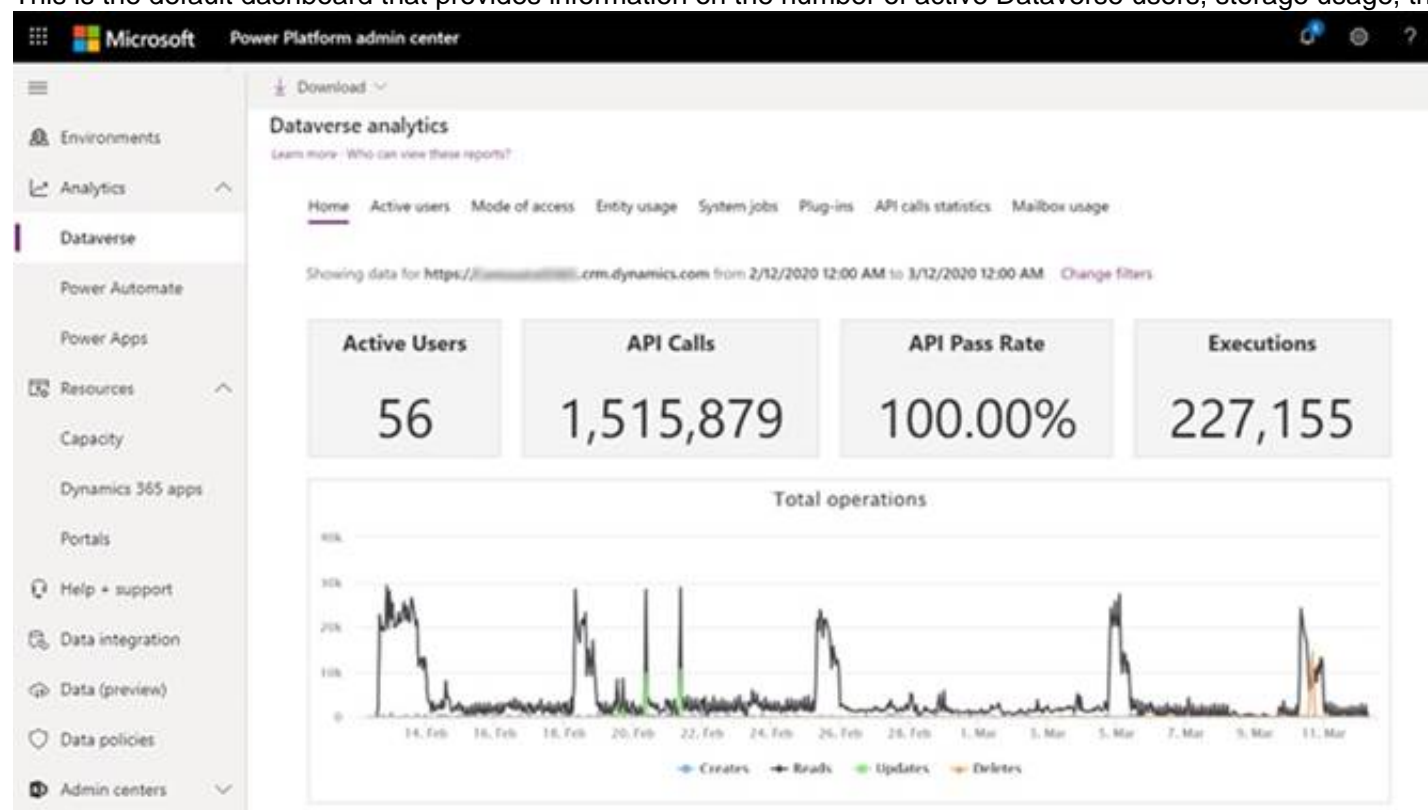
A: When users exceed their limits, administrators can see this in the admin center (see below). You can do either one of the following:

? Adjust the app or flow to use fewer API requests

? Purchase the Power Apps and Power Automate capacity add-on for your organization.

C: Home (default) Dashboard.

This is the default dashboard that provides information on the number of active Dataverse users, storage usage, the most active workflows, and more.



API Calls: API Calls Number of API calls that were made by the Dataverse environment for the selected time period.

Reference:

<https://docs.microsoft.com/en-us/power-platform/admin/api-request-limits-allocations> <https://docs.microsoft.com/en-us/power-platform/admin/analytics-common-data-service>

NEW QUESTION 167

- (Topic 4)

You are implementing a solution that includes applications which perform high-volume Microsoft Dataverse operations.

The applications must not experience a loss of functionality or loss of performance due to service protection API limits.

You need to evaluate metrics for the service protection API limits.

Which three metrics should you evaluate? Each correct answer pat of the solution. NOTE Each correct selection is worth one point.

- A. Number of concurrent connections per user account.
- B. Number of API requests per web server.

- C. Amount of API calls made within plug-in code.
- D. Amount of execution time that can be used for each connection.
- E. Number of API requests per connection.

Answer: ADE

NEW QUESTION 172

- (Topic 4)

A company uses a third-party cloud-based app to make real-time business decisions. The app has a RESTful API.

You must design a Microsoft Power Platform solution that interacts with the third-party app. Changes made in the Microsoft Power Platform solution must be reflected in the cloud app.

You need to recommend technologies to integrate the Microsoft Power Platform solution with the cloud app.

Which two technologies should you recommend? Each correct answer presents part of the solution.

NOTE: Each correct selection is worth one point.

- A. Scheduled Power Automate cloud flow with a custom connector to the cloud app
- B. Power Virtual Agents
- C. Custom plug-on registered with Microsoft Dataverse
- D. Model-driven app

Answer: AC

Explanation:

A: To enable Logic Apps, Power Automate, or Power Apps to communicate with the REST or SOAP API, use a custom connector, which is a wrapper around a REST API (Logic Apps also supports SOAP APIs).

C: Custom APIs are a powerful way to connect to any existing API, hosted anywhere, from PowerApps. You do not need a PowerApps Enterprise subscription to register or use a Custom API.

Custom APIs are RESTful endpoints that you can connect to and use from PowerApps. All you'll need is a Swagger definition file for your endpoint.

Reference:

<https://docs.microsoft.com/en-us/power-platform/guidance/architecture/real-world-examples/custom-connector-canvas>

<https://powerapps.microsoft.com/hr-hr/blog/register-and-use-custom-apis-in-powerapps/>

NEW QUESTION 175

.....

Relate Links

100% Pass Your PL-600 Exam with ExamBible Prep Materials

<https://www.exambible.com/PL-600-exam/>

Contact us

We are proud of our high-quality customer service, which serves you around the clock 24/7.

Viste - <https://www.exambible.com/>