

Exam Questions PMP

Project Management Professional

<https://www.2passeasy.com/dumps/PMP/>



NEW QUESTION 1

- (Topic 1)

Which process determines the risks that might affect the project?

- A. Perform Qualitative Risk Analysis
- B. Identify Risks
- C. Plan Risk Management
- D. Perform Quantitative Risk Analysis

Answer: B

NEW QUESTION 2

- (Topic 1)

In the Plan Stakeholder Management process, expert judgment is used to:

- A. Provide information needed to plan appropriate ways to engage project stakeholders.
- B. Ensure comprehensive identification and listing of new stakeholders.
- C. Analyze the information needed to develop the project scope statement.
- D. Decide the level of engagement of the stakeholders at each required stage.

Answer: D

NEW QUESTION 3

- (Topic 1)

What is the risk rating if the probability of occurrence is 0.30 and the impact if it does occur is moderate (0.20)?

- A. 0.03
- B. 0.06
- C. 0.10
- D. 0.50

Answer: B

NEW QUESTION 4

- (Topic 1)

Which type of tool would be used for the quality planning activity?

- A. Schedule Analysis
- B. Checklist Analysis
- C. Assumption Analysis
- D. Cost-Benefit Analysis

Answer: D

NEW QUESTION 5

- (Topic 1)

Which process is included in the Project Integration Management Knowledge Area?

- A. Manage Project Team
- B. Collect Requirements
- C. Sequence Activities
- D. Direct and Manage Project Work

Answer: D

NEW QUESTION 6

- (Topic 1)

Every project creates a unique product, service, or result that may be:

- A. tangible
- B. targeted
- C. organized
- D. variable

Answer: A

NEW QUESTION 7

- (Topic 1)

The ability to influence cost is greatest during which stages of the project?

- A. Early
- B. Middle
- C. Late
- D. Completion

Answer: A

NEW QUESTION 8

- (Topic 1)

Which of the following is an input to the Perform Qualitative Risk Analysis process?

- A. Risk register
- B. Risk data quality assessment
- C. Risk categorization
- D. Risk urgency

Answer: A

NEW QUESTION 9

- (Topic 1)

Which of the following is a project constraint?

- A. Twenty-five percent staff turnover is expected.
- B. The technology to be used is cutting-edge.
- C. Project leadership may change due to volatile political environment.
- D. The product is needed in 250 days.

Answer: D

NEW QUESTION 10

- (Topic 1)

A project can be defined as a:

- A. Temporary endeavor undertaken to create a unique product, service, or result
- B. Temporary endeavor that produces repetitive outputs
- C. Permanent endeavor undertaken to create a unique product, service, or result
- D. Permanent endeavor that produces repetitive outputs

Answer: A

NEW QUESTION 10

- (Topic 1)

Which is the document that presents a hierarchical project organization?

- A. WBS
- B. CPI
- C. OBS
- D. BOM

Answer: C

NEW QUESTION 12

- (Topic 1)

Which of the following is the primary output of the Identify Risks process?

- A. Risk management plan
- B. Risk register
- C. Change requests
- D. Risk response plan

Answer: B

NEW QUESTION 13

- (Topic 1)

Which element does a project charter contain?

- A. Management reserves
- B. Work breakdown structure
- C. Stakeholder list
- D. Stakeholder register

Answer: C

NEW QUESTION 15

- (Topic 1)

The project governance approach should be described in the:

- A. change control plan
- B. project scope
- C. statement of work

D. project management plan

Answer: D

NEW QUESTION 20

- (Topic 1)

Monte Carlo is which type of risk analysis technique?

- A. Probability
- B. Quantitative
- C. Qualitative
- D. Sensitivity

Answer: B

NEW QUESTION 23

- (Topic 1)

In which type of organizational structure are staff members grouped by specialty?

- A. Functional
- B. Projectized
- C. Matrix
- D. Balanced

Answer: A

NEW QUESTION 27

- (Topic 1)

A tool and technique used during the Define Scope process is:

- A. facilitated workshops.
- B. observations.
- C. questionnaires and surveys.
- D. group creativity techniques.

Answer: A

NEW QUESTION 32

- (Topic 1)

The application of knowledge, skills, tools, and techniques to project activities to meet project requirements describes management of which of the following?

- A. Project
- B. Scope
- C. Contract
- D. Program

Answer: A

NEW QUESTION 37

- (Topic 1)

Which of the following tools and techniques is used in the Develop Project Team process?

- A. Acquisitions
- B. Organizational theories
- C. Team-building activities
- D. Virtual teams

Answer: C

NEW QUESTION 39

- (Topic 1)

What name(s) is (are) associated with the Plan-Do-Check-Act cycle?

- A. Pareto
- B. Ishikawa
- C. Shewhart-Deming
- D. Delphi

Answer: C

NEW QUESTION 43

- (Topic 1)

Which of the following strategies is used to deal with risks that may have a negative impact on project objectives?

- A. Exploit

- B. Share
- C. Enhance
- D. Transfer

Answer: D

NEW QUESTION 48

- (Topic 1)

Which of the following is an input to the Qualitative Risk Analysis process?

- A. Risk register
- B. Risk data quality assessment
- C. Risk categorization
- D. Risk urgency

Answer: A

NEW QUESTION 50

- (Topic 1)

Skills necessary for project management such as motivating to provide encouragement; listening actively; persuading a team to perform an action; and summarizing, recapping, and identifying next steps are known as:

- A. organizational skills
- B. technical skills
- C. communication skills
- D. hard skills

Answer: C

NEW QUESTION 52

- (Topic 1)

Which input to the Manage Stakeholder Engagement process provides guidance on how stakeholders can best be involved in a project?

- A. Feedback analysis
- B. Stakeholder analysis
- C. Communication management plan
- D. Stakeholder management plan

Answer: D

NEW QUESTION 56

- (Topic 1)

In which process is a project manager identified and given the authority to apply resources to project activities?

- A. Acquire Project Team
- B. Develop Project Management Plan
- C. Manage Project Execution
- D. Develop Project Charter

Answer: D

NEW QUESTION 59

- (Topic 1)

Project contracts generally fall into which of the following three broad categories?

- A. Fixed-price, cost reimbursable, time and materials
- B. Make-or-buy, margin analysis, fixed-price
- C. Time and materials, fixed-price, margin analysis
- D. Make-or-buy, lump-sum, cost-plus-incentive

Answer: A

NEW QUESTION 63

- (Topic 1)

Where are product requirements and characteristics documented?

- A. Product scope description
- B. Project charter
- C. Preliminary project scope statement
- D. Communications management plan

Answer: A

NEW QUESTION 65

- (Topic 1)

The process of identifying specific actions to be performed to produce project deliverables is:

- A. Define Activities.
- B. Create WBS.
- C. Define Scope.
- D. Develop Schedule.

Answer: A

NEW QUESTION 68

- (Topic 1)

High-level project risks are included in which document?

- A. Business case
- B. Risk breakdown structure
- C. Project charter
- D. Risk register

Answer: C

NEW QUESTION 73

- (Topic 1)

Project Stakeholder Management focuses on:

- A. project staff assignments
- B. project team acquisition
- C. managing conflicting interests
- D. communication methods

Answer: C

NEW QUESTION 78

- (Topic 1)

Which is the Define Scope technique used to generate different approaches to execute and perform the work of the project?

- A. Build v
- B. buy
- C. Expert judgment
- D. Alternatives identification
- E. Product analysis

Answer: C

NEW QUESTION 80

- (Topic 1)

A tool and technique used during the Collect Requirements process is:

- A. prototypes.
- B. expert judgment.
- C. alternatives identification.
- D. product analysis.

Answer: A

NEW QUESTION 85

- (Topic 1)

Which Knowledge Area involves identifying the people, groups, or organizations that may be impacted by or impact a project?

- A. Project Risk Management
- B. Project Human Resource Management
- C. Project Scope Management
- D. Project Stakeholder Management

Answer: D

NEW QUESTION 88

- (Topic 1)

The stakeholder register is an output of:

- A. Identify Stakeholders.
- B. Plan Stakeholder Management.
- C. Control Stakeholder Engagement.
- D. Manage Stakeholder Engagement.

Answer: A

NEW QUESTION 91

- (Topic 1)

Prototype development may be used as a tool for which of the following risk response strategies?

- A. Avoid
- B. Accept
- C. Mitigate
- D. Exploit

Answer: C

NEW QUESTION 96

- (Topic 1)

The project management processes are usually presented as discrete processes with defined interfaces, while in practice they:

- A. operate separately.
- B. move together in batches,
- C. overlap and interact.
- D. move in a sequence.

Answer: C

NEW QUESTION 98

- (Topic 1)

Organizations perceive risks as:

- A. events that will inevitably impact project and organizational objectives.
- B. the effect of uncertainty on their project and organizational objectives.
- C. events which could have a negative impact on project and organizational objectives.
- D. the negative impact of undesired events on their project and organizational objectives.

Answer: B

NEW QUESTION 100

- (Topic 1)

The formal and informal interaction with others in an organization industry, or professional environment is known as:

- A. negotiation
- B. organizational theory
- C. meeting
- D. networking

Answer: D

NEW QUESTION 103

- (Topic 1)

The product scope description is used to:

- A. Gain stakeholders support for the project.
- B. Document the characteristics of the product.
- C. Describe the project in great detail.
- D. Formally authorize the project.

Answer: B

NEW QUESTION 108

- (Topic 1)

A temporary endeavor that creates a unique product or service is called a:

- A. Project
- B. Plan
- C. Program
- D. Portfolio

Answer: A

NEW QUESTION 112

- (Topic 1)

Which of the following processes includes prioritizing risks for subsequent further analysis or action by assessing and combining their probability of occurrence and impact?

- A. Qualitative risk analysis
- B. Quantitative risk analysis
- C. Risk management planning
- D. Risk response planning

Answer:

A

NEW QUESTION 116

- (Topic 1)

Which item is an example of personnel assessment?

- A. Resource calendar
- B. Tight matrix
- C. Team-building activity
- D. Focus group

Answer: D

NEW QUESTION 117

- (Topic 1)

Which Process Group contains those processes performed to define a new project?

- A. Initiating
- B. Planning
- C. Executing
- D. Closing

Answer: A

NEW QUESTION 119

- (Topic 1)

The output that defines an approach to increase the support and minimize negative impacts of stakeholders is the:

- A. stakeholder management strategy.
- B. communications management plan,
- C. stakeholder register,
- D. performance report.

Answer: A

NEW QUESTION 121

- (Topic 1)

Projects that share common outcomes, collective capability, knowledge, or skills are often grouped into a:

- A. portfolio
- B. program
- C. selection
- D. sub portfolio

Answer: B

NEW QUESTION 122

- (Topic 1)

Risk responses reflect an organization's perceived balance between:

- A. risk taking and risk avoidance.
- B. known risk and unknown risk.
- C. identified risk and analyzed risk.
- D. varying degrees of risk.

Answer: A

NEW QUESTION 125

- (Topic 1)

What risk technique is used to quantify the probability and impact of risks on project objectives?

- A. Expert judgment
- B. Risk registry
- C. Risk response planning
- D. Interviewing

Answer: D

NEW QUESTION 127

- (Topic 1)

Which enterprise environmental factors are considered during cost estimating?

- A. Marketplace conditions and commercial databases
- B. Marketplace conditions and company structure
- C. Commercial databases and company structure
- D. Existing human resources and market place conditions

Answer: A

NEW QUESTION 132

- (Topic 1)

Which of the following is a strategy to deal with positive risks or opportunities?

- A. Mitigate
- B. Transfer
- C. Exploit
- D. Avoid

Answer: C

NEW QUESTION 134

- (Topic 1)

Assigned risk ratings are based upon:

- A. Root cause analysis.
- B. Risk probability and impact assessment.
- C. Expert judgment.
- D. Revised stakeholders' tolerances.

Answer: B

NEW QUESTION 137

- (Topic 1)

What is the probability of occurrence if the risk rating is 0.56 and the impact if the risk does occur is very high (0.80)?

- A. 0.45
- B. 0.56
- C. 0.70
- D. 1.36

Answer: C

NEW QUESTION 142

- (Topic 1)

In project management, a temporary project can be:

- A. Completed without planning
- B. A routine business process
- C. Long in duration
- D. Ongoing to produce goods

Answer: C

NEW QUESTION 145

- (Topic 1)

Which process numerically analyzes the effect of identified risks on overall project objectives?

- A. Plan Risk Management
- B. Plan Risk Responses
- C. Perform Quantitative Risk Analysis
- D. Perform Qualitative Risk Analysis

Answer: C

NEW QUESTION 148

- (Topic 1)

The project charter is an input to which process?

- A. Develop Project Charter
- B. Develop Project Management Plan
- C. Monitor and Control Project Work
- D. Perform Integrated Change Control

Answer: B

NEW QUESTION 151

- (Topic 1)

An input to Develop Project Charter is a/an:

- A. Business case.
- B. Activity list.
- C. Project management plan.

D. Cost forecast.

Answer: A

NEW QUESTION 156

- (Topic 1)

The risk shared between the buyer and seller is determined by the:

- A. assumption log.
- B. quality checklist.
- C. risk register.
- D. contract type.

Answer: D

NEW QUESTION 158

- (Topic 1)

What type of project structure is a hierarchically organized depiction of the resources by type?

- A. Organizational breakdown structure (OBS)
- B. Resource breakdown structure (RBS)
- C. Work breakdown structure (WBS)
- D. Project breakdown structure (PBS)

Answer: B

NEW QUESTION 161

- (Topic 1)

The Verify Scope process is primarily concerned with:

- A. formalizing acceptance of the completed project deliverables.
- B. accuracy of the work deliverables.
- C. formalizing approval of the scope statement.
- D. accuracy of the work breakdown structure (WBS).

Answer: A

NEW QUESTION 164

- (Topic 1)

Documented identification of a flaw in a project component together with a recommendation is termed a:

- A. corrective action.
- B. preventive action.
- C. non-conformance report,
- D. defect repair.

Answer: D

NEW QUESTION 166

- (Topic 1)

Prioritizing risks for further analysis or action by assessing and combining their probability of occurrence and impact takes place in which process?

- A. Monitor and Control Risks
- B. Plan Risk Management
- C. Perform Qualitative Risk Analysis
- D. Perform Quantitative Risk Analysis

Answer: C

NEW QUESTION 169

- (Topic 1)

Which of the following is an output of the Distribute Information process?

- A. Project calendar
- B. Communications management plan
- C. Organizational process assets updates
- D. Project document updates

Answer: C

NEW QUESTION 171

- (Topic 1)

Which is a tool or technique used in scope definition?

- A. Templates, forms, and standards

- B. Change requests
- C. Stakeholder analysis
- D. Project assumptions

Answer: C

NEW QUESTION 176

- (Topic 1)

Which statement is true about the project management body of knowledge?

- A. Recognized by every project manager
- B. Constantly evolving
- C. The sum of all knowledge related to project management
- D. A sum of knowledge that should be applied on every project

Answer: B

NEW QUESTION 180

- (Topic 1)

The Define Scope process is in which of the following Process Groups?

- A. Initiating
- B. Planning
- C. Monitoring and Controlling
- D. Executing

Answer: B

NEW QUESTION 185

- (Topic 1)

An output of the Develop Project Team process is:

- A. change requests
- B. team performance assessments
- C. project staff assignments
- D. project documents updates

Answer: B

NEW QUESTION 186

- (Topic 1)

Risk exists the moment that a project is:

- A. planned.
- B. conceived.
- C. chartered.
- D. executed.

Answer: B

NEW QUESTION 189

- (Topic 1)

The zero duration of milestones in project planning occurs because milestones:

- A. Are unpredictable and challenge the Plan Schedule Management process.
- B. Occur at random times in the project plans.
- C. Represent a moment in time such as a significant project point or event.
- D. Represent both significant and insignificant points in the project and are difficult to anticipate.

Answer: C

NEW QUESTION 191

- (Topic 1)

Which of the following is a narrative description of products, services, or results to be delivered by a project?

- A. Project statement of work
- B. Business case
- C. Accepted deliverable
- D. Work performance information

Answer: A

NEW QUESTION 196

- (Topic 1)

What is the definition of Direct and Manage Project Execution?

- A. Integrating all planned activities
- B. Performing the activities included in the plan
- C. Developing and maintaining the plan
- D. Execution of deliverables

Answer: B

NEW QUESTION 198

- (Topic 1)

The probability and impact matrix is primarily used to:

- A. Quantify risk issues for trends during a quality audit.
- B. Develop a risk register for risk planning.
- C. Evaluate each risk's importance and priority during Perform Qualitative Risk Analysis.
- D. Define risk and compare impacts during Perform Quantitative Risk Analysis.

Answer: C

NEW QUESTION 203

- (Topic 1)

Which input to the Plan Risk Management process provides information on high-level risks?

- A. Project charter
- B. Enterprise environmental factors
- C. Stakeholder register
- D. Organizational process assets

Answer: A

NEW QUESTION 207

- (Topic 1)

The project scope statement and resource calendars are inputs to which Project Time Management process?

- A. Sequence Activities
- B. Estimate Activity Resources
- C. Develop Schedule
- D. Control Schedule

Answer: C

NEW QUESTION 208

- (Topic 1)

A project's purpose or justification, measurable project objectives and related success criteria, a summary milestone schedule, and a summary budget are all components of which document?

- A. Work breakdown structure
- B. Requirements document
- C. Project charter
- D. Project management plan

Answer: C

NEW QUESTION 211

- (Topic 1)

The process of defining how the project scope will be validated and controlled is known as:

- A. Define Scope.
- B. Develop Project Management Plan.
- C. Plan Scope Management.
- D. Plan Quality Management.

Answer: C

NEW QUESTION 213

- (Topic 1)

An element of the project scope statement is:

- A. Acceptance criteria.
- B. A stakeholder list.
- C. A summary budget,
- D. High-level risks.

Answer: A

NEW QUESTION 218

- (Topic 1)

At which point of the project is the uncertainty the highest and the risk of failing the greatest?

- A. Final phase of the project
- B. Start of the project
- C. End of the project
- D. Midpoint of the project

Answer: B

NEW QUESTION 221

- (Topic 1)

Inputs to Identifying Stakeholders include:

- A. Project charter, procurement documents, enterprise environmental factors, and organizational process assets.
- B. Project charter, stakeholder analysis, enterprise environmental factors, and organizational process assets.
- C. Project charter, stakeholder analysis, enterprise environmental factors, and stakeholder management strategy.
- D. Project charter, procurement documents, expert judgment, and organizational process assets.

Answer: A

NEW QUESTION 224

- (Topic 1)

The component of the risk management plan that documents how risk activities will be recorded is called:

- A. tracking
- B. scoping
- C. timing
- D. defining

Answer: A

NEW QUESTION 228

- (Topic 1)

A weighting system is a tool for which area of Conduct Procurements?

- A. Plan contracting
- B. Requesting seller responses
- C. Selecting seller's
- D. Planning purchase and acquisition

Answer: C

NEW QUESTION 229

- (Topic 1)

In which process group is the scope first defined?

- A. Initiating
- B. Planning
- C. Executing
- D. Controlling

Answer: A

NEW QUESTION 234

- (Topic 1)

Project management processes ensure the:

- A. alignment with organizational strategy
- B. efficient means to achieve the project objectives
- C. performance of the project team
- D. effective flow of the project throughout its life cycle

Answer: D

NEW QUESTION 237

- (Topic 1)

An output of the Manage Stakeholder Engagement process is:

- A. change requests
- B. enterprise environmental factors
- C. the stakeholder management plan
- D. the change log

Answer: A

NEW QUESTION 240

- (Topic 1)

Stakeholder management strategy is an output of:

- A. Plan Communications.
- B. Distribute Information.
- C. Report Performance.
- D. Identify Stakeholders.

Answer: D

NEW QUESTION 243

- (Topic 1)

Which basic quality tool explains a change in the dependent variable in relationship to a change observed in the corresponding independent variable?

- A. Cause-and-effect diagram
- B. Histogram
- C. Control chart
- D. Scatter diagram

Answer: D

NEW QUESTION 245

- (Topic 1)

Which type of contract is a hybrid of both a cost-reimbursable and a fixed-price contract?

- A. Cost Plus Award Fee Contract (CPAF)
- B. Firm-Fixed -Price Contract (FFP)
- C. Time and Material Contract (T&M)
- D. Cost Plus Incentive Fee Contract (CPIF)

Answer: C

NEW QUESTION 247

- (Topic 1)

Which type of agreement is legal, contractual, and between two or more entities to form a partnership, joint venture, or some other arrangement as defined by the parties?

- A. Teaming
- B. Collective bargaining
- C. Sharing
- D. Working

Answer: A

NEW QUESTION 249

- (Topic 1)

The process of prioritizing risks for further analysis or action is known as:

- A. Plan Risk Management.
- B. Plan Risk Responses.
- C. Perform Qualitative Risk Analysis.
- D. Perform Quantitative Risk Analysis.

Answer: C

NEW QUESTION 250

- (Topic 1)

Which of the following is an information gathering technique in Identify Risks?

- A. Influence diagrams
- B. Brainstorming
- C. Assumption analysis
- D. SWOT analysis

Answer: B

NEW QUESTION 252

- (Topic 1)

Which of the following is an input to the Develop Project Charter process?

- A. Work performance information
- B. Project management plan
- C. Business case
- D. Change requests

Answer:

C

NEW QUESTION 254

- (Topic 1)

Which Collect Requirements output links the product requirements to the deliverables that satisfy them?

- A. Requirements documentation
- B. Requirements traceability matrix
- C. Project management plan updates
- D. Project documents updates

Answer: B

NEW QUESTION 255

- (Topic 1)

A project lifecycle is defined as:

- A. a collection of generally sequential and sometimes overlapping project phases.
- B. a process required to ensure that the project includes all the work required, and only the work required, to complete the project successfully.
- C. a recognized standard for the project management profession.
- D. the application of knowledge, skills, tools, and techniques to project activities to meet the project requirements.

Answer: A

NEW QUESTION 259

- (Topic 1)

Which of the following is an output of the Define Activities process?

- A. Activity list
- B. Project plan
- C. Activity duration estimates
- D. Project schedule

Answer: A

NEW QUESTION 261

- (Topic 1)

The creation of an internet site to engage stakeholders on a project is an example of which type of communication?

- A. Push
- B. Pull
- C. Interactive
- D. Iterative

Answer: B

NEW QUESTION 264

- (Topic 1)

Which of the following risk response strategies involves allocating ownership of a positive risk to a third party?

- A. Mitigate
- B. Transfer
- C. Share
- D. Avoid

Answer: C

NEW QUESTION 269

- (Topic 1)

The diagram below is an example of a:



- A. Risk breakdown structure (RBS).
- B. Project team.
- C. SWOT Analysis.
- D. Work breakdown structure (WBS).

Answer: A

NEW QUESTION 270

- (Topic 1)

Which of the following is a tool or technique used in the Acquire Project Team process?

- A. Networking
- B. Training
- C. Negotiation
- D. Issue log

Answer: C

NEW QUESTION 273

- (Topic 1)

Which tool or technique is used in the Develop Project Management Plan process?

- A. Pareto diagram
- B. Performance reporting
- C. SWOT analysis
- D. Expert judgment

Answer: D

NEW QUESTION 278

- (Topic 1)

Which of the following includes how requirements activities will be planned, tracked, and reported?

- A. Configuration management plan
- B. Scope baseline
- C. Requirements management plan
- D. Schedule baseline

Answer: C

NEW QUESTION 280

- (Topic 1)

Technical capability, past performance, and intellectual property rights are examples of:

- A. performance measurement criteria
- B. source selection criteria
- C. product acceptance criteria
- D. phase exit criteria

Answer: B

NEW QUESTION 282

- (Topic 1)

Which process uses occurrence probability and impact on project objectives to assess the priority of identified risks?

- A. Risk identification
- B. Qualitative risk analysis
- C. Risk management planning
- D. Quantitative risk analysis

Answer: B

NEW QUESTION 287

- (Topic 1)

The degree, amount, or volume of risk that an organization or individual will withstand is called risk:

- A. appetite
- B. tolerance
- C. threshold
- D. management

Answer: B

NEW QUESTION 288

- (Topic 1)

An electronics firm authorizes a new project to develop a faster, cheaper, and smaller laptop after improvements in the industry and electronics technology. With which of the following strategic considerations is this project mainly concerned?

- A. Customer request
- B. Market demand
- C. Technological advance
- D. Strategic opportunity

Answer: C

NEW QUESTION 292

- (Topic 1)

Which document in the project management plan can be updated in the Plan Procurement Management process?

- A. Budget estimates
- B. Risk matrix
- C. Requirements documentation
- D. Procurement documents

Answer: C

NEW QUESTION 296

- (Topic 1)

Requirements documentation, requirements management plan, and requirements traceability matrix are all outputs of which process?

- A. Control Scope
- B. Collect Requirements
- C. Create WBS
- D. Define Scope

Answer: B

NEW QUESTION 301

- (Topic 1)

Which of the following is the process of identifying the specific actions to be performed to produce the project deliverables?

- A. Estimate Activity Durations
- B. Sequence Activities
- C. Define Activities
- D. Activity Attributes

Answer: C

NEW QUESTION 303

- (Topic 1)

What are the five Project Management Process Groups?

- A. Initiating, Planning, Executing, Monitoring and Controlling, and Closing
- B. Introduction, Planning, Executing, Monitoring and Controlling, and Closing
- C. Initiating, Planning, Executing, Monitoring and Controlling, and Ending
- D. Introduction, Planning, Implementation, Monitoring and Controlling, and Closure

Answer: A

NEW QUESTION 305

- (Topic 1)

Define Activities and Estimate Activity Resources are processes in which project management Knowledge Area?

- A. Project Time Management
- B. Project Cost Management
- C. Project Scope Management
- D. Project Human Resource Management

Answer: A

NEW QUESTION 308

- (Topic 1)

Who MUST know when a risk event occurs so that a response can be implemented?

- A. Customers
- B. Project sponsors
- C. Project management team
- D. Insurance claims department

Answer: C

NEW QUESTION 313

- (Topic 1)

In the Initiating Process Group, at what point does the project become officially authorized?

- A. When the project charter is signed
- B. When all the stakeholders agree on the scope of the project
- C. When the project manager is appointed
- D. When the necessary finance or funding is obtained

Answer: A

NEW QUESTION 315

- (Topic 1)

The risk response strategy in which the project team acts to reduce the probability of occurrence or impact of a risk is known as:

- A. exploit
- B. avoid
- C. mitigate
- D. share

Answer: C

NEW QUESTION 320

- (Topic 1)

Which process involves developing an approximation of the monetary resources needed to complete project activities?

- A. Estimate Costs
- B. Control Costs
- C. Determine Budget
- D. Plan Cost Management

Answer: A

NEW QUESTION 322

- (Topic 2)

An input to the Identify Risks process is the:

- A. Risk register.
- B. Risk probability and impact assessment.
- C. Communications management plan.
- D. Risk management plan.

Answer: D

NEW QUESTION 324

- (Topic 2)

One of the key benefits of the Plan Human Resource Management process is that it:

- A. outlines team selection guidelines and team member responsibilities.
- B. establishes project roles and responsibilities.
- C. improves teamwork, interpersonal skills, and competencies.
- D. provides an accurate appraisal of team member performance.

Answer: B

NEW QUESTION 329

- (Topic 2)

Which process involves defining, preparing, and coordinating all subsidiary plans and integrating them into a comprehensive plan?

- A. Direct and Manage Project Work
- B. Develop Project Management Plan
- C. Plan Quality Management
- D. Monitor and Control Project Work

Answer: B

NEW QUESTION 331

- (Topic 2)

Which of the following is a tool and technique for Estimate Activity Durations?

- A. Parametric estimating
- B. Monte Carlo analysis
- C. Alternatives analysis
- D. Bottom-up estimating

Answer: A

NEW QUESTION 335

- (Topic 2)

The specific technique for identifying a problem, discovering the causes that lead to it, and developing preventive actions is:

- A. Inspection
- B. Use of quality checklists
- C. Root cause analysis
- D. Use of matrix diagrams

Answer: C

NEW QUESTION 338

- (Topic 2)

A project manager is appointed full-time to a project and is given full-time administrative staff and full-time project team members. This situation describes which type of organizational structure?

- A. Projectized
- B. Weak matrix
- C. Functional
- D. Balanced matrix

Answer: A

NEW QUESTION 340

- (Topic 2)

Which tool or technique is an examination of industry and specific vendor capabilities?

- A. Independent estimates
- B. Market research
- C. Analytical techniques
- D. Bidder conferences

Answer: B

NEW QUESTION 345

- (Topic 2)

Which of the following is used to illustrate the connections between work packages or activities and project team members?

- A. Hierarchical-type charts (HTC)
- B. Organizational breakdown structure (OBS)
- C. Work breakdown structure (WBS)
- D. Responsibility assignment matrix (RAM)

Answer: D

NEW QUESTION 349

- (Topic 2)

Which process involves the creation of a document that provides the project manager with the authority to apply resources to a project?

- A. Define Activities
- B. Direct and Manage Project Work
- C. Develop Project Management Plan
- D. Develop Project Charter

Answer: D

NEW QUESTION 352

- (Topic 2)

A method of obtaining early feedback on requirements by providing a working model of the expected product before actually building is known as:

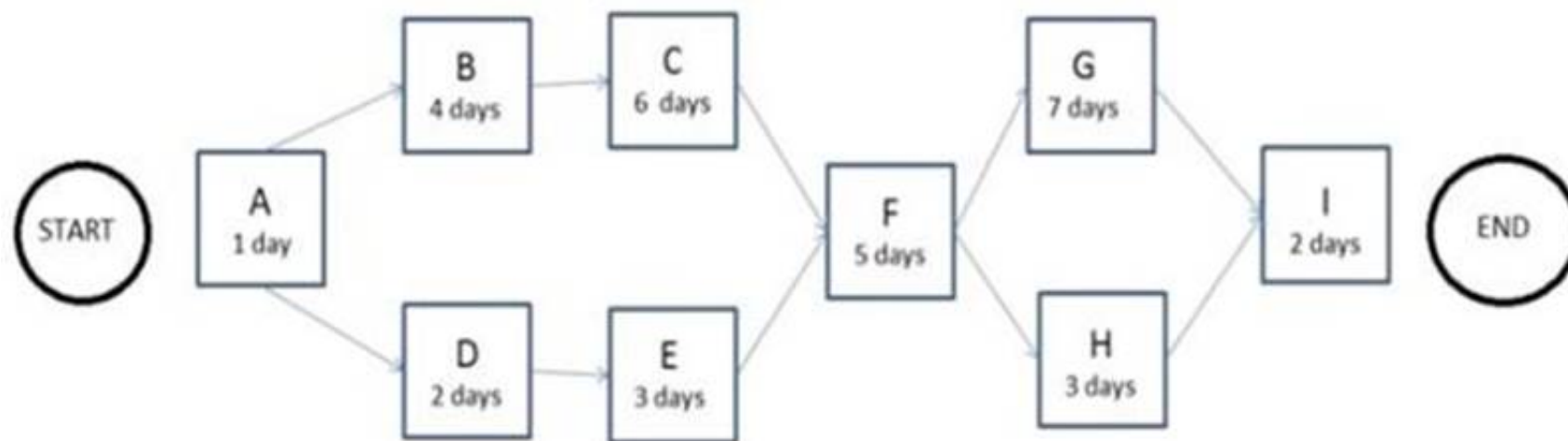
- A. Benchmarking.
- B. Context diagrams.
- C. Brainstorming.
- D. Prototyping.

Answer: D

NEW QUESTION 354

- (Topic 2)

The following is a network diagram for a project.



The total float for the project is how many days?

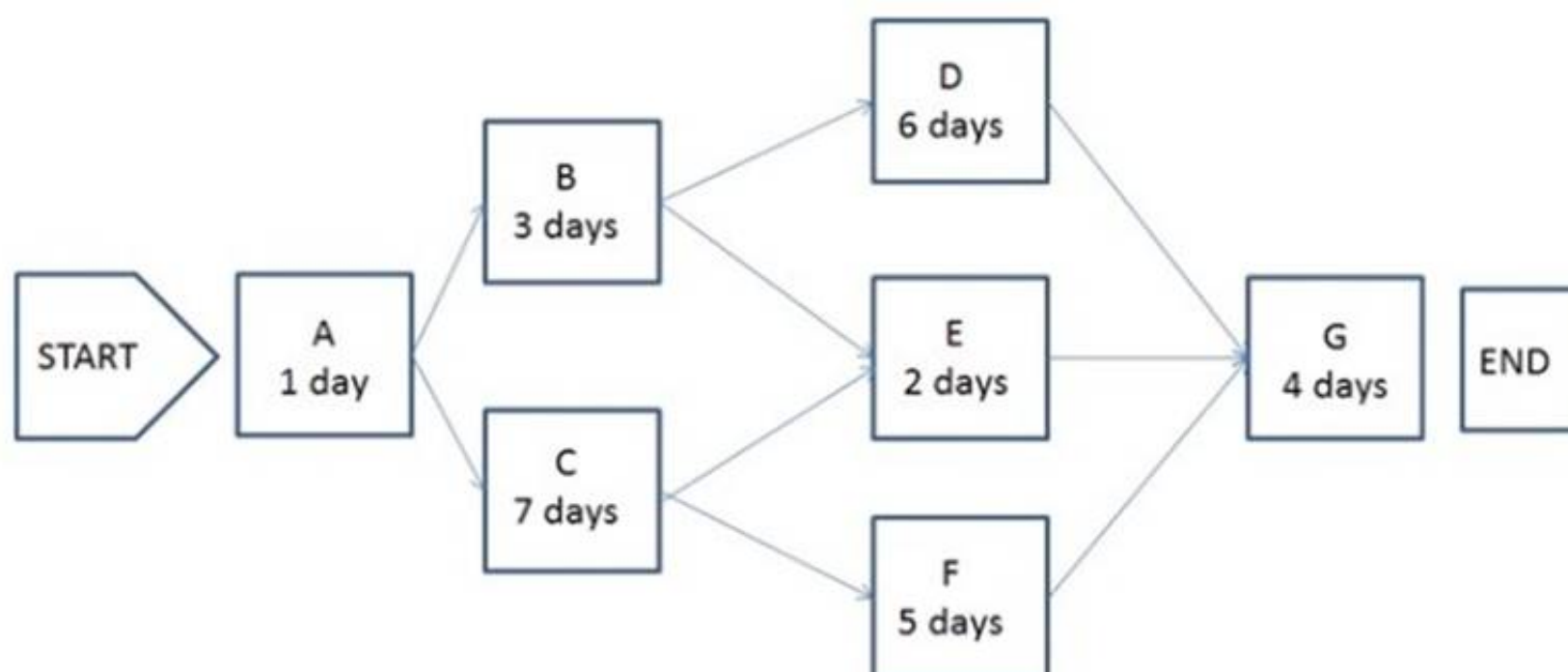
- A. 5
- B. 9
- C. 12
- D. 14

Answer: B

NEW QUESTION 356

- (Topic 2)

The following is a network diagram for a project.



The critical path for the project is how many days in duration?

- A. 10
- B. 12
- C. 14
- D. 17

Answer: D

NEW QUESTION 358

- (Topic 2)

Which of the following is contained within the communications management plan?

- A. An organizational chart
- B. Glossary of common terminology
- C. Organizational process assets
- D. Enterprise environmental factors

Answer: B

NEW QUESTION 363

- (Topic 2)

At which stage of the project should certain factors such as the unavailability of human resources due to constraint be considered?

- A. Initiation
- B. Execution
- C. Planning
- D. Monitoring and Controlling

Answer: C

NEW QUESTION 365

- (Topic 2)

The processes required to establish the scope of the project, refine the objectives, and define the course of action required to attain the objectives that the project has been undertaken to achieve are grouped within which Process Group?

- A. Initiating
- B. Planning
- C. Executing
- D. Monitoring and Controlling

Answer: B

NEW QUESTION 370

- (Topic 2)

Which piece of information is part of the WBS Dictionary?

- A. Responsible organization
- B. Change requests
- C. Validated deliverables
- D. Organizational process assets

Answer: A

NEW QUESTION 372

- (Topic 2)

Which tool is used to develop technical details within the project management plan?

- A. Expert Judgment
- B. Project Management Methodology
- C. Project Management Information
- D. Project Selection Methods

Answer: A

NEW QUESTION 377

- (Topic 2)

The lowest level normally depicted in a work breakdown structure (WBS) is called a/an:

- A. work package
- B. deliverable
- C. milestone
- D. activity

Answer: A

NEW QUESTION 382

- (Topic 2)

Project Scope Management is primarily concerned with:

- A. Developing a detailed description of the project and product.
- B. Determining how requirements will be analyzed, documented, and managed.
- C. Defining and controlling what is and is not included in the project.
- D. Formalizing acceptance of the completed project deliverables.

Answer: C

NEW QUESTION 383

- (Topic 2)

A benefit of using virtual teams in the Acquire Project Team process is the reduction of the:

- A. cultural differences of team members
- B. possibility of communication misunderstandings
- C. costs associated with travel
- D. costs associated with technology

Answer: C

NEW QUESTION 386

- (Topic 2)

Which provides the basic framework for managing a project?

- A. Project life cycle
- B. Work breakdown structure (WBS)
- C. Enterprise environmental factors
- D. Project initiation

Answer:

A

NEW QUESTION 389

- (Topic 2)

Which process identifies whether the needs of a project can best be met by acquiring products, services, or results outside of the organization?

- A. Plan Procurement Management
- B. Control Procurements
- C. Collect Requirements
- D. Plan Cost Management

Answer: A

NEW QUESTION 390

- (Topic 2)

An example of a group decision-making technique is:

- A. Nominal group technique.
- B. Majority.
- C. Affinity diagram.
- D. Multi-criteria decision analysis.

Answer: B

NEW QUESTION 393

- (Topic 2)

Activity cost estimates are quantitative assessments of the probable costs required to:

- A. Create WBS.
- B. complete project work.
- C. calculate costs.
- D. Develop Project Management Plan.

Answer: B

NEW QUESTION 398

- (Topic 2)

Which tool or technique is used in the Plan Scope Management process?

- A. Document analysis
- B. Observations
- C. Product analysis
- D. Expert judgment

Answer: D

NEW QUESTION 401

- (Topic 2)

A contract management plan is a subsidiary of what other type of plan?

- A. Resource plan
- B. Project management plan
- C. Cost control plan
- D. Expected monetary value plan

Answer: B

NEW QUESTION 402

- (Topic 2)

Project deliverables that have been completed and checked for correctness through the Control Quality process are known as:

- A. Verified deliverables.
- B. Validated deliverables.
- C. Acceptance criteria.
- D. Activity resource requirements.

Answer: A

NEW QUESTION 404

- (Topic 2)

Taking out insurance in relation to risk management is called what?

- A. Transference
- B. Avoidance
- C. Exploring
- D. Mitigation

Answer: A

NEW QUESTION 407

- (Topic 2)

Which items are components of a project management plan?

- A. Change management plan, process improvement plan, and scope management plan
- B. Agreements, procurement management plan, and work performance information
- C. Schedule management plan, project schedule, and resource calendars
- D. Scope baseline, project statement of work, and requirements traceability matrix

Answer: A

NEW QUESTION 411

- (Topic 2)

Which of the following are three inputs to the risk register?

- A. Risk register updates, stakeholder register, and quality management plan
- B. Communication management plan, enterprise environmental factors, and activity duration estimates
- C. Risk management plan, activity cost estimates, and project documents
- D. Project scope statement, organizational process assets, and scope baseline

Answer: C

NEW QUESTION 416

- (Topic 2)

Risk categorization is a tool or technique used in which process?

- A. Plan Risk Responses
- B. Plan Risk Management
- C. Perform Qualitative Risk Analysis
- D. Perform Quantitative Risk Analysis

Answer: C

NEW QUESTION 421

- (Topic 2)

Which of the following is an input to Develop Human Resource Plan?

- A. Team performance assessment
- B. Roles and responsibilities
- C. Staffing management plan
- D. Enterprise environmental factors

Answer: D

NEW QUESTION 426

- (Topic 2)

The organizational process assets that are of particular importance to Plan Communications are:

- A. Formal plans and procedures
- B. Lessons learned and historical information
- C. Guidelines and knowledge bases
- D. Stakeholder positions and their influence

Answer: B

NEW QUESTION 429

- (Topic 2)

What are the identified risks for doing excessive decomposition in a WBS?

- A. Insufficient project funding and disqualification of sellers
- B. Insufficient project funding and ineffective use of resources
- C. Disqualification of sellers and non-productive management efforts
- D. Non-productive management effort and inefficient use of resources

Answer: D

NEW QUESTION 430

- (Topic 2)

Which of the following tools or techniques is used for Estimate Activity Durations?

- A. Critical path method
- B. Rolling wave planning
- C. Precedence diagramming method

D. Parametric estimating

Answer: D

NEW QUESTION 433

- (Topic 2)

Which tool or technique is required in order to determine the project budget?

- A. Cost of quality
- B. Historical relationships
- C. Project management software
- D. Forecasting

Answer: B

NEW QUESTION 436

- (Topic 2)

A strengths, weaknesses, opportunities, and threats (SWOT) analysis is a tool or technique used in which process?

- A. Identify Risks
- B. Control Risks
- C. Perform Quantitative Risk Analysis
- D. Perform Qualitative Risk Analysis

Answer: A

NEW QUESTION 440

- (Topic 2)

Which process develops options and actions to enhance opportunities and reduce threats to project objectives?

- A. Identify Risks
- B. Control Risks
- C. Plan Risk Management
- D. Plan Risk Responses

Answer: D

NEW QUESTION 441

- (Topic 2)

A required input for Create WBS is a project:

- A. quality plan.
- B. schedule network.
- C. management document update.
- D. scope statement.

Answer: D

NEW QUESTION 446

- (Topic 2)

A work package has been scheduled to cost \$1,000 to complete and was to be finished today. As of today, the actual expenditure is \$1,200 and approximately half of the work has been completed. What is the cost variance?

- A. -700
- B. -200
- C. 200
- D. 500

Answer: A

NEW QUESTION 448

- (Topic 2)

When should quality planning be performed?

- A. While developing the project charter
- B. In parallel with the other planning processes
- C. As part of a detailed risk analysis
- D. As a separate step from the other planning processes

Answer: B

NEW QUESTION 449

- (Topic 2)

Which can be used to determine whether a process is stable or has predictable performance?

- A. Matrix diagram
- B. Histogram
- C. Control chart
- D. Flowchart

Answer: C

NEW QUESTION 451

- (Topic 2)

The process of estimating the type and quantity of material, human resources, equipment, or supplies required to perform each activity is known as:

- A. Collect Requirements.
- B. Conduct Procurements.
- C. Estimate Activity Durations.
- D. Estimate Activity Resources.

Answer: D

NEW QUESTION 454

- (Topic 2)

You are assigned to implement the project control plan. What should you do to ensure the plan is effective and current?

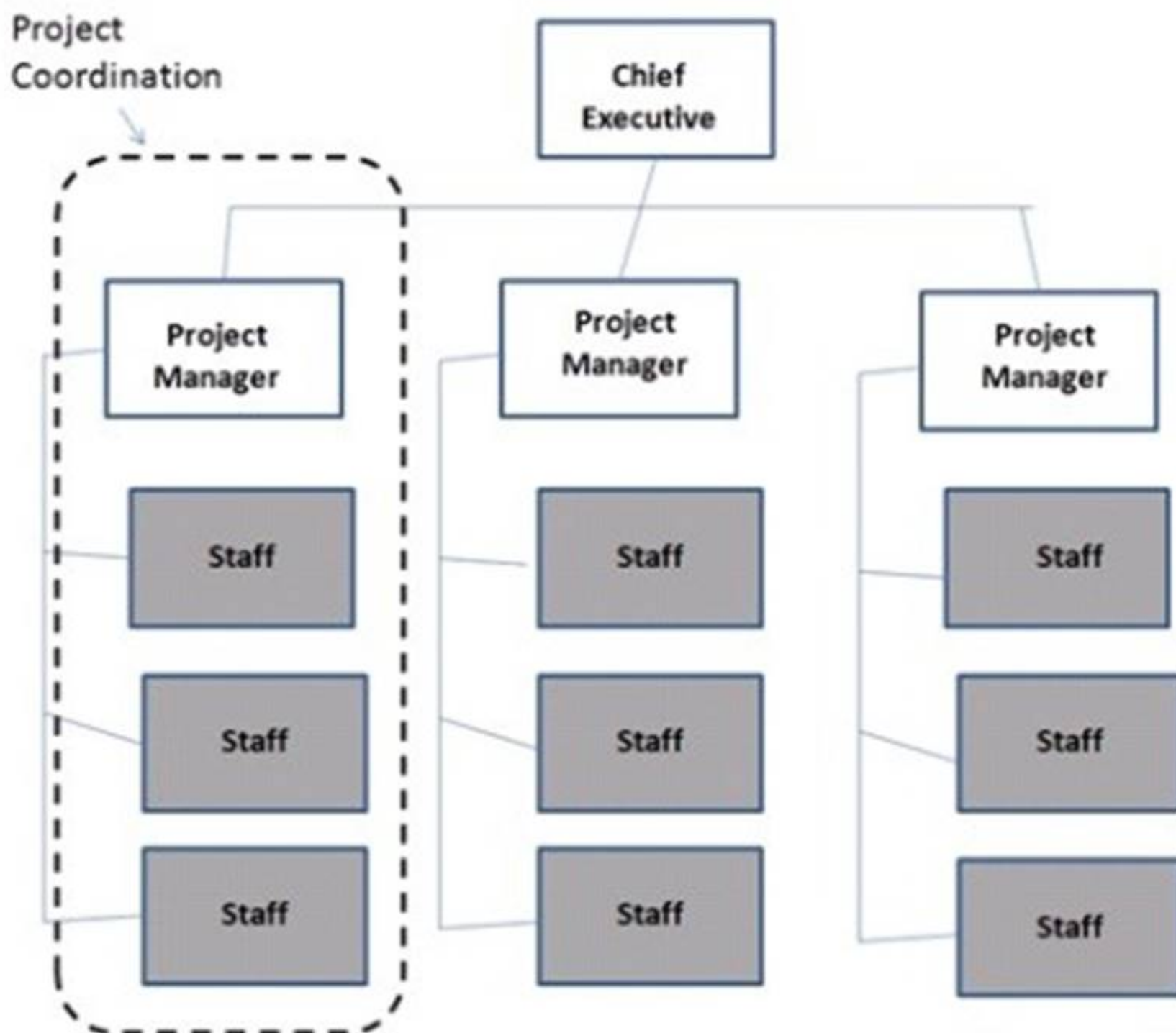
- A. Perform periodic project performance reviews.
- B. Identify quality project standards.
- C. Follow ISO 9000 quality standards.
- D. Complete the quality control checklist.

Answer: A

NEW QUESTION 459

- (Topic 2)

Which type of organizational structure is displayed in the diagram provided?



- A. Balanced matrix
- B. Projectized
- C. Strong matrix

D. Functional

Answer: B

NEW QUESTION 463

- (Topic 2)

Which quality management and control tool is useful in visualizing parent-to-child relationships in any decomposition hierarchy that uses a systematic set of rules that define a nesting relationship?

- A. Interrelationship digraphs
- B. Tree diagram
- C. Affinity diagram
- D. Network diagram

Answer: B

NEW QUESTION 465

- (Topic 2)

An input used in developing the communications management plan is:

- A. Communication models.
- B. Enterprise environmental factors.
- C. Organizational communications,
- D. Organizational cultures and styles.

Answer: B

NEW QUESTION 469

- (Topic 2)

Which tool or technique can a project manager use to select in advance a team member who will be crucial to the task?

- A. Acquisition
- B. Negotiation
- C. Virtual team
- D. Pre-assignment

Answer: D

NEW QUESTION 473

- (Topic 2)

What defines the portion of work included in a contract for items being purchased or acquired?

- A. Procurement management plan
- B. Evaluation criteria
- C. Work Breakdown Structure (WBS)
- D. Contract Statement of Work (SOW)

Answer: D

NEW QUESTION 477

- (Topic 2)

In a construction project schedule, what is the logical relationship between the delivery of the concrete materials and the pouring of concrete?

- A. Start-to-start (SS)
- B. Start-to-finish (SF)
- C. Finish-to-finish (FF)
- D. Finish-to-start (FS)

Answer: D

NEW QUESTION 481

- (Topic 2)

Inputs to the Plan Schedule Management process include:

- A. Organizational process assets and the project charter,
- B. Enterprise environmental factors and schedule tools.
- C. Time tables and Pareto diagrams.
- D. Activity attributes and resource calendars.

Answer: A

NEW QUESTION 486

- (Topic 2)

What is the total float of the critical path?

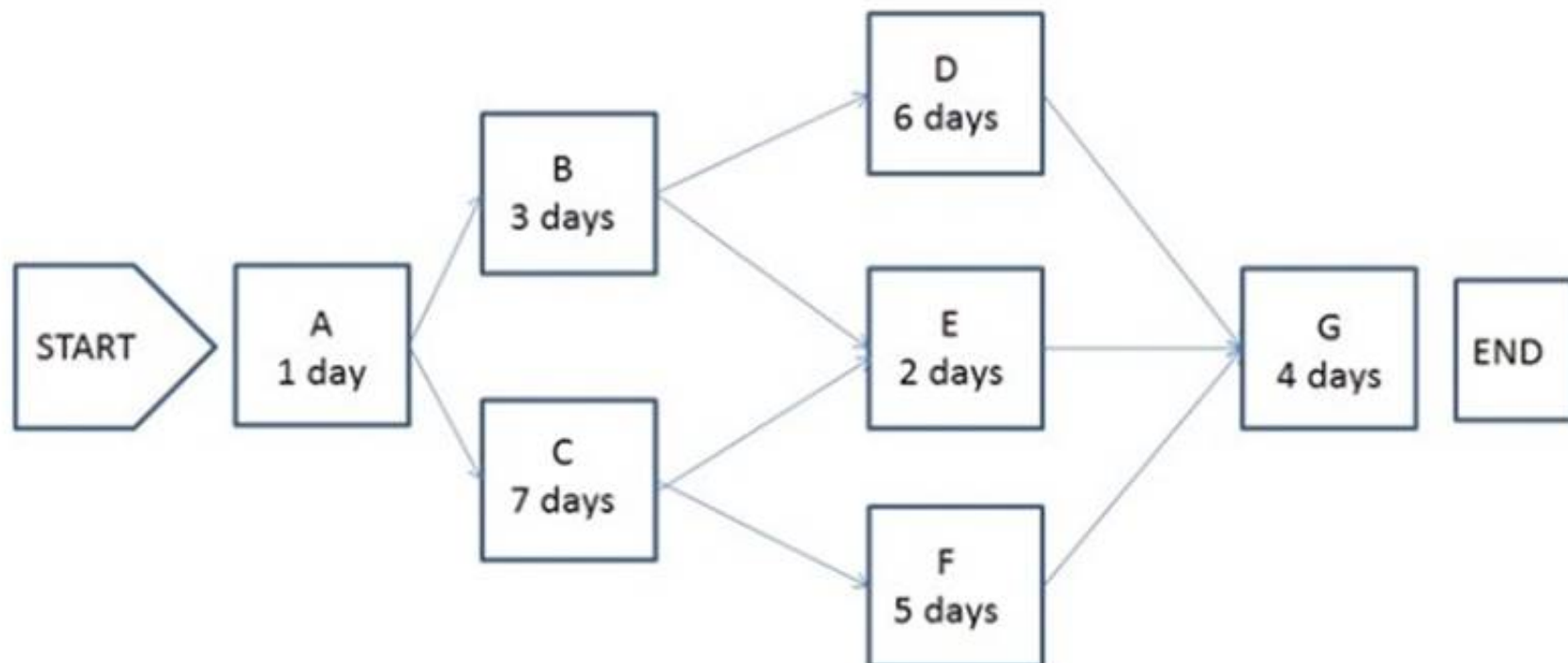
- A. Can be any number
- B. Zero or positive
- C. Zero or negative
- D. Depends on the calendar

Answer: C

NEW QUESTION 489

- (Topic 2)

The following is a network diagram for a project.



The shortest non-critical path for the project is how many days in duration?

- A. 10
- B. 12
- C. 14
- D. 16

Answer: A

NEW QUESTION 492

- (Topic 2)

Which of the following tools or techniques is used for Estimate Activity Duration?

- A. Critical path
- B. Rolling Wave
- C. PDM
- D. Para metric

Answer: D

NEW QUESTION 496

- (Topic 2)

Create WBS is part of which of the following Knowledge Areas?

- A. Project Integration Management
- B. Project Scope Management
- C. Project Time Management
- D. Project Cost Management

Answer: B

NEW QUESTION 501

- (Topic 2)

In the basic communication model, which term refers to the method that is used to convey the message?

- A. Decode
- B. Encode
- C. Medium
- D. Noise

Answer: C

NEW QUESTION 503

- (Topic 2)

Who, along with the project manager, is supposed to direct the performance of the planned project activities and manage the various technical and organizational interfaces that exist within the project?

- A. The customer and functional managers
- B. The risk owners and stakeholders
- C. The sponsors and stakeholders
- D. The project management team

Answer: D

NEW QUESTION 507

- (Topic 2)

Which Manage Communications tool or technique focuses on identifying and managing barriers?

- A. Communication methods
- B. Information technology
- C. Communication models
- D. Information management systems

Answer: C

NEW QUESTION 511

- (Topic 2)

Which process determines the risks that may affect the project and documents their characteristics?

- A. Control Risks
- B. Plan Risk Management
- C. Plan Risk Responses
- D. Identify Risks

Answer: D

NEW QUESTION 512

- (Topic 2)

Which of the following are outputs of Develop Project Team?

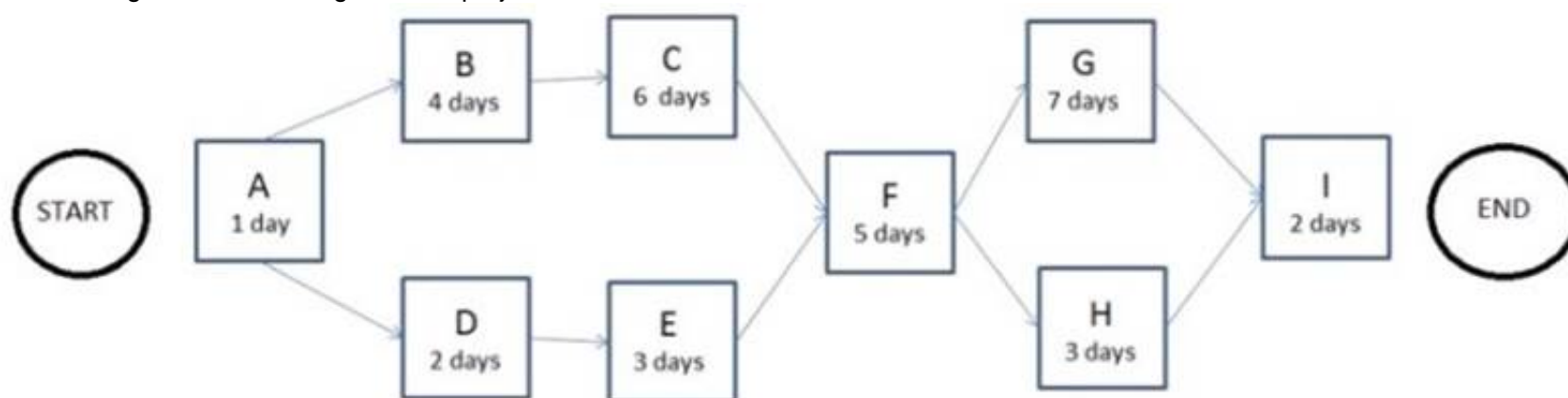
- A. Human resources plan changes and project staff assignment updates
- B. Project management plan updates and enterprise environmental factor updates
- C. Resource calendars and project management plan updates
- D. Team performance assessments and enterprise environmental factor updates

Answer: D

NEW QUESTION 516

- (Topic 2)

The following is a network diagram for a project.



How many possible paths are identified for this project?

- A. 3
- B. 4
- C. 6
- D. 7

Answer: B

NEW QUESTION 520

- (Topic 2)

Which stakeholder classification model groups stakeholders based on their level of authority and their active involvement in the project?

- A. Power/influence grid
- B. Power/interest grid
- C. Influence/impact grid
- D. Salience model

Answer: A

NEW QUESTION 521

- (Topic 2)

The Create WBS process is in which of the following Project Management Process Groups?

- A. Planning
- B. Monitoring and Controlling
- C. Executing
- D. Initiating

Answer: A

NEW QUESTION 523

- (Topic 2)

The process of identifying and documenting the specific actions to be performed to produce the project deliverables is known as:

- A. Define Activities.
- B. Sequence Activities.
- C. Define Scope.
- D. Control Schedule.

Answer: A

NEW QUESTION 526

- (Topic 2)

Which of the following is a tool and technique for activity duration estimating?

- A. Parametric estimating
- B. Monte Carlo analysis
- C. Top-down estimating
- D. Bottom-up estimating

Answer: A

NEW QUESTION 531

- (Topic 2)

The process of identifying the stakeholders' information needs is completed during:

- A. Plan Communications.
- B. Manage Stakeholder Expectations.
- C. Stakeholder Analysis.
- D. Identify Stakeholders.

Answer: A

NEW QUESTION 533

- (Topic 2)

Inputs to the Plan Risk Management process include the:

- A. cost management plan.
- B. risk management plan,
- C. activity list,
- D. risk register.

Answer: D

NEW QUESTION 538

- (Topic 2)

"Tailoring" is defined as the:

- A. effort of addressing each process to determine which are appropriate and their appropriate degree of rigor.
- B. act of creating a project team with the specialized skills required to produce a required product or service.
- C. action taken to bring a defective or nonconforming component into compliance with requirements or specifications.
- D. adjustment of the respective influences of time, cost, and quality in order to most efficiently achieve scope.

Answer: A

NEW QUESTION 542

- (Topic 2)

Which type of analysis systemically gathers and analyzes qualitative and quantitative information to determine which interests should be taken into account throughout the project?

- A. Product
- B. Cost-benefit
- C. Stakeholder
- D. Research

Answer: C

NEW QUESTION 543

- (Topic 2)

Co-location is a tool and technique of:

- A. Develop Human Resource Plan.
- B. Manage Project Team.
- C. Develop Project Team.
- D. Acquire Project Team.

Answer: C

NEW QUESTION 546

- (Topic 3)

An output of the Manage Project Team process is:

- A. project management plan updates
- B. project staff assignments updates
- C. team performance assessments
- D. resource calendar updates

Answer: A

NEW QUESTION 550

- (Topic 3)

The process of developing a detailed description of the project and product is known as:

- A. Create WBS.
- B. Verify Scope.
- C. Collect Requirements.
- D. Define Scope.

Answer: D

NEW QUESTION 552

- (Topic 3)

A project has an EV of 100 workdays, an AC of 120 workdays, and a PV of 80 workdays. What should be the concern?

- A. There is a cost underrun.
- B. There is a cost overrun.
- C. The project may not meet the deadline.
- D. The project is 20 days behind schedule.

Answer: B

NEW QUESTION 553

- (Topic 3)

Which of the following is an output of the Perform Integrated Change Control process?

- A. Project document updates
- B. Organizational process assets updates
- C. Change requests
- D. Deliverables

Answer: A

NEW QUESTION 555

- (Topic 3)

What is one of the MAJOR outputs of activity sequencing?

- A. Responsibility assignment matrix
- B. Work breakdown structure update
- C. Project network diagram
- D. Mandatory dependencies list

Answer: C

NEW QUESTION 556

- (Topic 3)

Which tool and technique identifies inefficient and ineffective policies, processes, and procedures?

- A. Scope audits
- B. Scope reviews
- C. Quality audits
- D. Control chart

Answer: C

NEW QUESTION 559

- (Topic 3)

The precedence diagramming method (PDM) is also known as:

- A. Arrow Diagram.
- B. Critical Path Methodology (CPM).
- C. Activity-On-Node (AON).
- D. schedule network diagram.

Answer: C

NEW QUESTION 564

- (Topic 3)

Quality and credibility of the qualitative risk analysis process requires that different levels of the risk's probabilities and impacts be defined is the definition of what?

- A. Risk breakdown structure (RBS)
- B. Risk probability and impact
- C. Qualitative risk analysis
- D. Risk response planning

Answer: B

NEW QUESTION 568

- (Topic 3)

What scope definition technique is used to generate different approaches to execute and perform the work of the project?

- A. Build v
- B. buy
- C. Expert judgment
- D. Alternatives identification
- E. Product analysis

Answer: C

NEW QUESTION 571

- (Topic 3)

What is the schedule performance index (SPI) using the following data? BAC = \$100,000 PV = \$50,000 AC = \$80,000 EV = \$40,000

- A. 1
- B. 0.4
- C. 0.5
- D. 0.8

Answer: D

NEW QUESTION 576

- (Topic 3)

Which illustrates the connection between work that needs to be done and its project team members?

- A. Work breakdown structure (WBS)
- B. Network diagrams
- C. Staffing management plan
- D. Responsibility assignment matrix (RAM)

Answer: D

NEW QUESTION 577

- (Topic 3)

Projects can intersect with an organization's operations at various points during the product life cycle such as:

- A. When there is an operations shutdown (i.
- B. a strike).
- C. When developing new products, upgrading products, or expanding outputs.
- D. When a project transitions from a temporary to a permanent status.
- E. When the project manager is promoted to operations manager.

Answer: B

NEW QUESTION 581

- (Topic 3)

A large portion of a projects budget is typically expended on the processes in which Process Group?

- A. Executing
- B. Planning
- C. Monitoring and Controlling
- D. Closing

Answer: A

NEW QUESTION 586

- (Topic 3)

Which of the following is an input to Direct and Manage Project Execution?

- A. Requested changes
- B. Approved change requests
- C. Work performance information
- D. Implemented defect repair

Answer: A

NEW QUESTION 590

- (Topic 3)

What is a deliverable-oriented, hierarchical decomposition of the work to be executed to accomplish the project objectives and create the required deliverables?

- A. Organizational breakdown structure (OBS)
- B. Work performance information
- C. Work package
- D. Work breakdown structure (WBS)

Answer: D

NEW QUESTION 591

- (Topic 3)

The process of monitoring the status of the project to update project progress and manage changes to the schedule baseline is:

- A. Control Schedule.
- B. Quality Control.
- C. Perform Integrated Change Control.
- D. Develop Schedule.

Answer: A

NEW QUESTION 594

- (Topic 3)

Which of the following is a component of three-point estimates?

- A. Probabilistic
- B. Most likely
- C. Expected
- D. Anticipated

Answer: B

NEW QUESTION 596

- (Topic 3)

Which item is an output of Plan Quality Management and an input to Perform Quality Assurance?

- A. Organizational process updates
- B. Quality metrics
- C. Change requests
- D. Quality control measurements

Answer: B

NEW QUESTION 598

- (Topic 3)

The PV is \$1000, EV is \$2000, and AC is \$1500. What is CPI?

- A. 1.33
- B. 2
- C. 0.75
- D. 0.5

Answer: A

NEW QUESTION 603

- (Topic 3)

After Define Activities and Sequence Activities, the next process is:

- A. Estimate Activity Resources.
- B. Estimate Activity Durations,

- C. Develop Schedule.
- D. Control Schedule.

Answer: A

NEW QUESTION 605

- (Topic 3)

In which process might a project manager use risk reassessment as a tool and technique?

- A. Perform Qualitative Risk Analysis
- B. Risk Control
- C. Monitor and Control Project Work
- D. Plan Risk Responses

Answer: B

NEW QUESTION 608

- (Topic 3)

A process is defined as:

- A. A set of interrelated actions and activities performed to achieve a certain objective.
- B. A set of guidelines that explains how to carry out a particular task.
- C. The inputs for a task and the tools and techniques required to carry out the task.
- D. A collection of logically related project activities, usually culminating in the completion of a major deliverable.

Answer: A

NEW QUESTION 613

- (Topic 3)

Which Define Activities output extends the description of the activity by identifying the multiple components associated with each activity?

- A. Project document updates
- B. Activity list
- C. Activity attributes
- D. Project calendars

Answer: C

NEW QUESTION 615

- (Topic 3)

Which tool or technique of the Define Activities process allows for work to exist at various levels of detail depending on where it is in the project life cycle?

- A. Historical relationships
- B. Dependency determination
- C. Bottom-up estimating
- D. Rolling wave planning

Answer: D

NEW QUESTION 617

- (Topic 3)

A project manager should communicate to stakeholders about resolved project issues by updating the:

- A. project records
- B. project reports
- C. stakeholder notifications
- D. stakeholder register

Answer: C

NEW QUESTION 619

- (Topic 3)

The most commonly used type of precedence relationship in the precedence diagramming method (PDM) is:

- A. start-to-start (SS)
- B. start-to-finish (SF)
- C. finish-to-start (FS)
- D. finish-to-finish (FF)

Answer: C

NEW QUESTION 624

- (Topic 3)

What is a tool and technique used in the Develop Project Management Plan process?

- A. Project management information system (PMIS)
- B. Project charter
- C. Quality assurance
- D. Expert judgment

Answer: D

NEW QUESTION 628

- (Topic 3)

Impacts to other organizational areas, levels of service, and acceptance criteria are typical components of which document?

- A. Business case
- B. Work breakdown structure
- C. Requirements documentation
- D. Risk register

Answer: C

NEW QUESTION 633

- (Topic 3)

An input to the Perform Integrated Change Control process is:

- A. expert judgment
- B. seller proposals
- C. the project charter
- D. the project management plan

Answer: D

NEW QUESTION 638

- (Topic 3)

Who is responsible for developing the project management plan and all related component plans?

- A. Project team
- B. Portfolio manager
- C. Project manager
- D. Project management office

Answer: C

NEW QUESTION 640

- (Topic 3)

Which type of elaboration allows a project management team to manage at a greater level of detail as the project evolves?

- A. Cyclic
- B. Progressive
- C. Repetitive
- D. Iterative

Answer: B

NEW QUESTION 643

- (Topic 3)

Which Process Group contains the processes performed to complete the work defined in the project management plan to satisfy the project specifications?

- A. Initiating
- B. Planning
- C. Executing
- D. Closing

Answer: C

NEW QUESTION 644

- (Topic 3)

One of the tools and techniques of the Manage Project Team process is:

- A. organization charts.
- B. ground rules.
- C. organizational theory,
- D. conflict management.

Answer: D

NEW QUESTION 649

- (Topic 3)

A change log for communications can be used to communicate to the appropriate stakeholders that there are changes:

- A. To the project management plan.
- B. To the risk register.
- C. In the scope verification processes.
- D. And their impact to the project in terms of time, cost, and risk.

Answer: D

NEW QUESTION 650

- (Topic 3)

Which Process Group typically consumes the bulk of a project's budget?

- A. Monitoring and Controlling
- B. Executing
- C. Planning
- D. Initiating

Answer: B

NEW QUESTION 653

- (Topic 3)

When would resource leveling be applied to a schedule model?

- A. Before constraints have been identified
- B. Before it has been analyzed by the critical path method
- C. After it has been analyzed by the critical path method
- D. After critical activities have been removed from the critical path

Answer: C

NEW QUESTION 657

- (Topic 3)

A car company authorized a project to build more fuel-efficient cars in response to gasoline shortages. With which of the following strategic considerations was this project mainly concerned?

- A. Market demand
- B. Legal requirements
- C. Strategic Opportunity
- D. Technological advance

Answer: A

NEW QUESTION 661

- (Topic 3)

Typical outcomes of a project include:

- A. Products, services, and improvements.
- B. Products, programs, and services.
- C. Improvements, portfolios, and services.
- D. Improvements, processes, and products.

Answer: A

NEW QUESTION 666

- (Topic 3)

A disadvantage associated with virtual teams is that they:

- A. Require communication technology that is not readily available.
- B. Create difficulties when including people with disabilities.
- C. Often cannot accommodate teams that work different hours or shifts.
- D. Create the possibility for misunderstandings to arise.

Answer: D

NEW QUESTION 668

- (Topic 3)

A project charter is an output of which Process Group?

- A. Executing
- B. Planning
- C. Initiating
- D. Closing

Answer: C

NEW QUESTION 669

- (Topic 3)

A project management office manages a number of aspects including the:

- A. Project scope, schedule, cost, and quality of the products of the work packages.
- B. Central coordination of communication management across projects.
- C. Assignment of project resources to best meet project objectives.
- D. Overall risk, overall opportunity, and interdependencies among projects at the enterprise level.

Answer: D

NEW QUESTION 674

- (Topic 3)

When large or complex projects are separated into distinct phases or subprojects, all of the Process Groups would normally be:

- A. divided among each of the phases or subprojects.
- B. repeated for each of the phases or subprojects.
- C. linked to specific phases or subprojects.
- D. integrated for specific phases or subprojects.

Answer: B

NEW QUESTION 677

- (Topic 3)

The Project Management Process Group in which performance is observed and measured regularly from project initiation through completion is:

- A. Executing.
- B. Initiating,
- C. Monitoring and Controlling.
- D. Planning.

Answer: C

NEW QUESTION 682

- (Topic 3)

Which of the following is a schematic display of the project's schedule activities and the logical relationships among them?

- A. Gantt chart
- B. Project schedule network diagram
- C. Project milestone list
- D. Activity list

Answer: B

NEW QUESTION 684

- (Topic 3)

An input to Conduct Procurements is:

- A. Independent estimates.
- B. Selected sellers.
- C. Seller proposals.
- D. Resource calendars.

Answer: C

NEW QUESTION 686

- (Topic 3)

What are assigned risk ratings based upon?

- A. Root cause analysis
- B. Assessed probability and impact
- C. Expert judgment
- D. Risk Identification

Answer: B

NEW QUESTION 688

- (Topic 3)

Activities on the critical path have which type of float?

- A. Zero free float
- B. Zero or negative float
- C. Negative and positive float
- D. Zero or positive float

Answer: B

NEW QUESTION 689

- (Topic 3)

To please the customer, a project team member delivers a requirement which is uncontrolled. This is not part of the plan. This describes:

- A. scope creep.
- B. a change request.
- C. work performance information.
- D. deliverables.

Answer: A

NEW QUESTION 694

- (Topic 3)

Which type of project management office (PMO) supplies templates, best practices, and training to project teams?

- A. Supportive
- B. Directive
- C. Controlling
- D. Instructive

Answer: A

NEW QUESTION 695

- (Topic 3)

What provides information regarding the ways people, teams, and organizational units behave?

- A. Organizational chart
- B. Organizational theory
- C. Organizational structure
- D. Organizational behavior

Answer: B

NEW QUESTION 699

- (Topic 3)

What is the lowest level in the Work Breakdown Structure called?

- A. Work Packages
- B. Activities
- C. Schedules
- D. Tasks

Answer: A

NEW QUESTION 701

- (Topic 3)

Managing ongoing production of goods and services to ensure business continues efficiently describes which type of management?

- A. Portfolio
- B. Project
- C. Program
- D. Operations

Answer: D

NEW QUESTION 704

- (Topic 3)

Which document describes the procurement item in sufficient detail to allow prospective sellers to determine if they are capable of providing the products, services, or results?

- A. Procurement management plan
- B. Procurement statement of work
- C. Request for proposal
- D. Request for quote

Answer: B

NEW QUESTION 706

- (Topic 3)

The project manager needs to review the templates in use. The templates are part of the:

- A. Enterprise environmental factors.
- B. Historical information,
- C. Organizational process assets.
- D. Corporate knowledge base.

Answer: C

NEW QUESTION 709

- (Topic 3)

Project Management Process Groups are linked by:

- A. the outputs they produce
- B. discrete or one-time events
- C. the project management plan
- D. common tools and techniques

Answer: A

NEW QUESTION 714

- (Topic 3)

Which of the following is an input into the Develop Project Team process?

- A. Enterprise environmental factors
- B. Organizational process assets
- C. Project staff assignments
- D. Performance reports

Answer: C

NEW QUESTION 719

- (Topic 3)

A Pareto chart is a specific type of:

- A. control chart
- B. histogram
- C. cause-and-effect diagram
- D. scatter diagram

Answer: B

NEW QUESTION 722

- (Topic 3)

What is the name of a graphic display of project team members and their reporting relationships?

- A. Role dependencies chart
- B. Reporting flow diagram
- C. Project organization chart
- D. Project team structure diagram

Answer: C

NEW QUESTION 723

- (Topic 3)

Which of the following involves making information available to project stakeholders in a timely manner?

- A. Plan Communications
- B. Performance reporting
- C. Project status reports
- D. Distribute Information

Answer: D

NEW QUESTION 726

- (Topic 3)

Which tool or technique is effective in a project in which the deliverable is not a service or result?

- A. Inspection
- B. Variance analysis
- C. Decomposition
- D. Product analysis

Answer: D

NEW QUESTION 730

- (Topic 3)

Fast tracking is a schedule compression technique used to shorten the project schedule without changing project scope. Which of the following can result from fast tracking?

- A. The risk of achieving the shortened project time is increased.
- B. The critical path will have positive total float.

- C. Contingency reserves are released for redeployment by the project manager.
- D. Duration buffers are added to maintain a focus on planned activity durations.

Answer: A

NEW QUESTION 735

- (Topic 3)

Which of the following factors is lowest at the start of the project?

- A. Cost of changes
- B. Stakeholder influences
- C. Risk
- D. Uncertainty

Answer: A

NEW QUESTION 739

- (Topic 3)

Which tool or technique measures performance of the project as it moves from project initiation through project closure?

- A. Resource leveling
- B. Parametric measuring
- C. Pareto chart
- D. Earned value

Answer: D

NEW QUESTION 743

- (Topic 3)

The Process Group in which the internal and external stakeholders interact and influence the overall outcome of the project is the:

- A. Monitoring and Controlling Process Group.
- B. Initiating Process Group.
- C. Planning Process Group.
- D. Executing Process Group.

Answer: B

NEW QUESTION 745

- (Topic 3)

What are the Project Procurement Management processes?

- A. Conduct Procurements, Control Procurements, Integrate Procurements, and Close Procurements
- B. Estimate Procurements, Integrate Procurements, Control Procurements, and Validate Procurements
- C. Plan Procurement Management, Conduct Procurements, Control Procurements, and Close Procurements
- D. Plan Procurement Management, Perform Procurements, Control Procurements, and Validate Procurements

Answer: C

NEW QUESTION 750

- (Topic 3)

Design of experiments (DOE) should be used during which of the following processes?

- A. Perform Quality Assurance
- B. Total Quality Management
- C. Perform Quality Control
- D. Plan Quality

Answer: D

NEW QUESTION 754

- (Topic 3)

Which of the seven basic quality tools is especially useful for gathering attributes data while performing inspections to identify defects?

- A. Histograms
- B. Scatter diagrams
- C. Flowcharts
- D. Checksheets

Answer: D

NEW QUESTION 757

- (Topic 3)

Another name for an Ishikawa diagram is:

- A. cause and effect diagram.
- B. control chart.
- C. flowchart.
- D. histogram.

Answer: A

NEW QUESTION 759

- (Topic 3)

The Human Resource Management processes are:

- A. Develop Human Resource Plan, Acquire Project Team, Develop Project Team, and Manage Project Team.
- B. Acquire Project Team, Manage Project Team, Manage Stakeholder Expectations, and Develop Project Team.
- C. Acquire Project Team, Develop Human Resource Plan, Conflict Management, and Manage Project Team.
- D. Develop Project Team, Manage Project Team, Estimate Activity Resources, and Acquire Project Team.

Answer: A

NEW QUESTION 760

- (Topic 3)

In which phase of team building activities do team members begin to work together and adjust their work habits and behavior to support the team?

- A. Performing
- B. Storming
- C. Norming
- D. Forming

Answer: C

NEW QUESTION 762

- (Topic 3)

Which schedule development tool and technique produces a theoretical early start date and late start date?

- A. Critical path method
- B. Variance analysis
- C. Schedule compression
- D. Schedule comparison bar charts

Answer: A

NEW QUESTION 765

- (Topic 3)

Using the three-point estimating technique, if the most likely duration is four months, the optimistic duration is two months, and the pessimistic duration is one year, how many months is the expected activity duration?

- A. Two
- B. Four
- C. Five
- D. Twelve

Answer: C

NEW QUESTION 769

- (Topic 3)

As the project progresses, which of the following is routinely collected from the project activities?

- A. Communication management activities
- B. Change requests
- C. Configuration verification and audit
- D. Work performance information

Answer: D

NEW QUESTION 770

- (Topic 3)

Which of the following is a means of reaching a group decision in which everyone agrees on a single course of action?

- A. Dictatorship
- B. Majority
- C. Plurality
- D. Unanimity

Answer: D

NEW QUESTION 774

- (Topic 3)

An input to the Manage Project Team process is:

- A. Work performance reports.
- B. Change requests.
- C. Activity resource requirements.
- D. Enterprise environmental factors.

Answer: A

NEW QUESTION 777

- (Topic 3)

A method to manage stakeholder expectations in the scope statement is to clearly:

- A. state the guiding principles of the organization.
- B. identify alternatives to generate different approaches.
- C. state what is out of scope.
- D. outline the results of the Delphi technique.

Answer: C

NEW QUESTION 782

- (Topic 3)

Which tools or techniques will a project manager use for Develop Project Team?

- A. Negotiation
- B. Roles and responsibilities
- C. Recognition and rewards
- D. Prizing and promoting

Answer: C

NEW QUESTION 787

- (Topic 3)

Which of the following buffers protects the target finish date from slippage along the critical chain?

- A. Critical buffer
- B. Project buffer
- C. Duration buffer
- D. Feeding buffer

Answer: B

NEW QUESTION 791

- (Topic 3)

Which schedule method allows the project team to place buffers on the project schedule path to account for limited resources and project uncertainties?

- A. Critical path method
- B. Critical chain method
- C. Resource leveling
- D. Schedule network analysis

Answer: B

NEW QUESTION 794

- (Topic 3)

Which activity involves ensuring that the composition of a projects configuration items is correct?

- A. Configuration Identification
- B. Configuration Status Accounting
- C. Configuration Verification and Audit
- D. Configuration Quality Assurance

Answer: C

NEW QUESTION 796

- (Topic 3)

Inputs to the Define Activities process include:

- A. Project scope statement, resource calendars, and work performance information.
- B. Scope baseline, enterprise environmental factors, and organizational process assets.
- C. Project scope statement, approved change requests, and WBS dictionary.
- D. Scope baseline, enterprise environmental factors, and activity duration estimates.

Answer: B

NEW QUESTION 797

- (Topic 3)

In which process might you use risk reassessment as a tool and technique?

- A. Qualitative risk analysis
- B. Risk monitoring and control
- C. Monitor and control project work
- D. Risk response planning

Answer: B

NEW QUESTION 798

- (Topic 3)

Which type of manager is assigned by the performing organization to lead the team that is responsible for achieving the project objectives?

- A. Program
- B. Functional
- C. Project
- D. Portfolio

Answer: C

NEW QUESTION 802

- (Topic 3)

The traditional organization chart structure that can be used to show positions and relationships in a graphic top-down format is called a:

- A. Responsible, accountable, consult, and inform (RACI) chart.
- B. Matrix-based chart.
- C. Human resource chart.
- D. Hierarchical-type chart.

Answer: D

NEW QUESTION 803

- (Topic 3)

Which cost estimate technique includes contingencies to account for cost uncertainty?

- A. Vendor bid analysis
- B. Three-point estimates
- C. Parametric estimating
- D. Reserve analysis

Answer: D

NEW QUESTION 805

- (Topic 3)

Status of deliverables, implementation status for change requests, and forecasted estimates to complete are examples of:

- A. Earned value management.
- B. Enterprise environmental factors.
- C. Organizational process assets.
- D. Work performance information.

Answer: D

NEW QUESTION 806

- (Topic 3)

Which process involves identifying and documenting the logical relationships between project activities?

- A. Develop Schedule
- B. Sequence Activities
- C. Create WBS
- D. Applying leads and lags

Answer: B

NEW QUESTION 811

- (Topic 3)

Job satisfaction, challenging work, and sufficient financial compensation are values related to which interpersonal skill?

- A. Influencing
- B. Motivation
- C. Negotiation
- D. Trust building

Answer: B

NEW QUESTION 813

- (Topic 3)

Which of the following Project Communication Management processes uses performance reports as an input?

- A. Manage Stakeholder Expectations
- B. Report Performance
- C. Distribute Information
- D. Plan Communications

Answer: C

NEW QUESTION 814

- (Topic 3)

Which of the following is an output from Control Scope?

- A. Change requests
- B. Variance analysis
- C. Accepted deliverables
- D. Requirements documentation

Answer: A

NEW QUESTION 819

- (Topic 3)

Which grid shows which resources are tied to work packages?

- A. Work breakdown structure (WBS)
- B. Responsibility assignment matrix (RAM)
- C. Project assignment chart
- D. Personnel assignment matrix

Answer: B

NEW QUESTION 824

- (Topic 3)

The most appropriate project life cycle model for an environment with a high level of change and extensive stakeholder involvement in projects is:

- A. adaptive
- B. reflexive
- C. predictive
- D. iterative

Answer: A

NEW QUESTION 826

- (Topic 3)

Expected monetary value (EMV) is computed by which equation?

- A. Value of each possible outcome multiplied by probability of occurrence
- B. Value of each possible outcome multiplied by probability of non-occurrence
- C. Multiplying the value of each possible outcome by the probability of occurrence and adding the products together
- D. Multiplying the value of each possible outcome by the probability of non-occurrence and adding the products together

Answer: C

NEW QUESTION 830

- (Topic 3)

Which stakeholder communicates with higher levels of management to gather organizational support and promote project benefits?

- A. Portfolio manager
- B. Project sponsor
- C. Project manager
- D. Project management office

Answer: B

NEW QUESTION 832

- (Topic 3)

Which tool and technique is used in Conduct Procurements?

- A. Teaming agreements
- B. Expert judgment
- C. Bidder conferences
- D. Contract types

Answer:

C

NEW QUESTION 834

- (Topic 3)

Within project integration management, the statement of work (SOW) references which aspects of the project?

- A. Strategic plan, business need, and product scope description
- B. Contract, enterprise environmental factors, and organizational process assets
- C. Business plan, project management plan, and project schedule
- D. Product lifecycle, business objective, and management strategy

Answer: A

NEW QUESTION 839

- (Topic 3)

Correlated and contextualized information on how closely the scope is being maintained relative to the scope baseline is contained within:

- A. project documents updates.
- B. project management plan updates.
- C. change requests.
- D. work performance information.

Answer: D

NEW QUESTION 840

- (Topic 3)

Which of the following will provide the basis for estimating, scheduling, executing, and monitoring and controlling project work?

- A. Activities
- B. Milestone list
- C. Work breakdown structure (WBS)
- D. Work packages

Answer: A

NEW QUESTION 843

- (Topic 3)

Change request status updates are an output of which process?

- A. Perform Integrated Change Control
- B. Direct and Manage Project Execution
- C. Close Project or Phase
- D. Monitor and Control Project Work

Answer: A

NEW QUESTION 848

- (Topic 3)

Which input provides suppliers with a clear set of goals, requirements, and outcomes?

- A. Procurement statement of work
- B. Purchase order
- C. Source selection criteria
- D. Bidder conference

Answer: A

NEW QUESTION 851

- (Topic 3)

Which of the following is an input to the Direct and Manage Project Execution process?

- A. Approved change requests
- B. Approved contract documentation
- C. Work performance information
- D. Rejected change requests

Answer: A

NEW QUESTION 852

- (Topic 3)

Variance and trend analysis is a tool and technique used in which process?

- A. Perform Qualitative Risk Analysis
- B. Perform Quantitative Risk Analysis
- C. Control Risks
- D. Plan Risk Responses

Answer: C

NEW QUESTION 856

- (Topic 3)

Which of the Perform Quality Assurance tools and techniques may enhance the creation of the work breakdown structure (WBS) to give structure to the decomposition of the scope?

- A. Activity network diagrams
- B. Affinity diagrams
- C. Matrix diagrams
- D. Interrelationship digraphs

Answer: B

NEW QUESTION 861

- (Topic 3)

For a stakeholder with low interest and high power, the project manager should:

- A. Monitor the stakeholder.
- B. Manage the stakeholder closely.
- C. Keep the stakeholder satisfied.
- D. Keep the stakeholder informed.

Answer: C

NEW QUESTION 863

- (Topic 3)

Managing procurement relationships and monitoring contract performance are part of which process?

- A. Conduct Procurements
- B. Plan Procurements
- C. Administer Procurements
- D. Close Procurements

Answer: C

NEW QUESTION 865

- (Topic 3)

Team performance assessments is an output of which of the following processes?

- A. Develop Human Resource Plan
- B. Perform Quality Control
- C. Develop Project Team
- D. Manage Project Team

Answer: C

NEW QUESTION 869

- (Topic 3)

Which of the following can be used as an input for Define Scope?

- A. Product analysis
- B. Project charter
- C. Scope baseline
- D. Project scope statement

Answer: B

NEW QUESTION 874

- (Topic 3)

The project manager has requested all expert team members to complete an anonymous questionnaire to identify possible risks. This is an example of a technique known as the:

- A. interview technique
- B. information gathering technique
- C. Delphi technique
- D. feedback technique

Answer: C

NEW QUESTION 877

- (Topic 3)

The correct equation for schedule variance (SV) is earned value:

- A. minus planned value [EV - PV].

- B. minus actual cost [EV - AC].
- C. divided by planned value [EV/PV],
- D. divided by actual cost [EV/AC].

Answer: A

NEW QUESTION 880

- (Topic 3)

A project manager requesting industry groups and consultants to recommend project intervention is relying on:

- A. Communication models.
- B. Stakeholder participation.
- C. Expert judgment
- D. Enterprise environmental factors.

Answer: C

NEW QUESTION 885

- (Topic 4)

Which process involves aggregating the estimated costs of the individual schedule activities or work packages?

- A. Estimate Costs
- B. Estimate Activity Resources
- C. Control Costs
- D. Determine Budget

Answer: B

NEW QUESTION 888

- (Topic 4)

An output of Control Schedule is:

- A. A project schedule network diagram
- B. A schedule management plan
- C. Schedule data
- D. Schedule forecasts

Answer: D

NEW QUESTION 892

- (Topic 4)

Which technique is commonly used for the Quantitative Risk Analysis activity?

- A. Brainstorming
- B. Strategies for Opportunities
- C. Decision Tree Analysis
- D. Risk Data Quality Assessment

Answer: C

NEW QUESTION 895

- (Topic 4)

Which written document helps monitor who is responsible for resolving specific problems and concerns by a target date?

- A. Project Plan
- B. Responsibility Matrix
- C. Issue Log
- D. Scope Document

Answer: C

NEW QUESTION 898

- (Topic 4)

Which schedule network analysis technique modifies the project schedule to account for limited resources?

- A. Human resource planning
- B. Fast tracking
- C. Critical chain method
- D. Rolling wave planning

Answer: C

NEW QUESTION 901

- (Topic 4)

The purpose of the Project Communications Management Knowledge Area is to:

- A. Monitor and control communications throughout the entire project life cycle.
- B. Maintain an optimal flow of information among all project participants.
- C. Develop an appropriate approach for project communications.
- D. Ensure timely and appropriate collection of project information.

Answer: D

NEW QUESTION 902

- (Topic 4)

In Project Cost Management, which input is exclusive to the Determine Budget process?

- A. Scope baseline
- B. Organizational process assets
- C. Project schedule
- D. Resource calendars

Answer: D

NEW QUESTION 903

- (Topic 4)

How is the schedule variance calculated using the earned value technique?

- A. EV less AC
- B. AC less PV
- C. EV less PV
- D. AC less EV

Answer: C

NEW QUESTION 904

- (Topic 4)

An input to the Control Quality process is:

- A. Activity attributes
- B. Quality control measurements
- C. Enterprise environmental factors
- D. Deliverables

Answer: D

NEW QUESTION 905

- (Topic 4)

The following chart contains information about the tasks in a project.

Task	PV	AC	EV
1	10,000	10,000	10,000
2	10,000	8,000	10,000
3	10,000	8,000	8,000
4	9,000	12,000	10,000
5	10,000	12,000	12,000
6	10,000	10,000	12,000
7	12,000	12,000	10,000
8	10,000	8,000	9,000
9	12,000	10,000	11,000

Based on the chart, what is the schedule variance (SV) for Task 8?

- A. -2,000
- B. -1,000
- C. 1,000
- D. 2,000

Answer: B

NEW QUESTION 909

- (Topic 4)

What cost control technique is used to compare actual project performance to planned or expected performance?

- A. Cost aggregation
- B. Trend analysis
- C. Forecasting
- D. Variance analysis

Answer: D

NEW QUESTION 912

- (Topic 4)

Cost baseline is an output of which of the following processes?

- A. Control Costs
- B. Determine Budget
- C. Estimate Costs
- D. Estimate Activity Resources

Answer: B

NEW QUESTION 914

- (Topic 4)

An output of the Plan Quality Management process is:

- A. A process improvement plan,
- B. Quality control measurements.

- C. Work performance information,
- D. The project management plan.

Answer: A

NEW QUESTION 915

- (Topic 4)

Which technique is utilized in the Control Schedule process?

- A. Performance measure
- B. Baseline schedule
- C. Schedule network analysis
- D. Variance analysis

Answer: D

NEW QUESTION 917

- (Topic 4)

Which of the following outputs from the Schedule Control process aids in the communication of SV, SPI or any performance status to stakeholders?

- A. Performance organizations
- B. Schedule baselines
- C. Performance measurements
- D. Change requests

Answer: C

NEW QUESTION 918

- (Topic 4)

One of the fundamental tenets of modern quality management states that quality is:

- A. planned, designed, and built in.
- B. planned, designed, and inspected in.
- C. built in, created, and reviewed.
- D. built in, created, and standardized.

Answer: A

NEW QUESTION 919

- (Topic 4)

Analyzing the strengths, weaknesses, opportunities, and threats (SWOT) of a project is known as:

- A. calculating cost of quality
- B. comparing project benefits
- C. performing measurements analysis
- D. identifying risks

Answer: D

NEW QUESTION 924

- (Topic 4)

A given schedule activity is most likely to last four weeks. In a best-case scenario, the schedule activity is estimated to last two weeks. In a worst-case scenario, the schedule activity is estimated to last 12 weeks. Given these three estimates, what is the expected duration of the activity?

- A. Three weeks
- B. Four weeks
- C. Five weeks
- D. Six weeks

Answer: C

NEW QUESTION 929

- (Topic 4)

Funding limit reconciliation is a tool and technique used in which process?

- A. Control Costs
- B. Determine Budget
- C. Estimate Costs
- D. Control Budget

Answer: B

NEW QUESTION 930

- (Topic 4)

Scope, schedule, and cost parameters are integrated in the:

- A. Performance measurement baseline.
- B. Analysis of project forecasts,
- C. Summary of changes approved in a period,
- D. Analysis of past performance.

Answer: A

NEW QUESTION 933

- (Topic 4)

Which of the following is a tool and technique used to monitor risk?

- A. Technical performance measurement
- B. Cost performance baseline
- C. Benchmarking
- D. Cost of quality

Answer: A

NEW QUESTION 934

- (Topic 4)

Processes in the Initiating Process Group may be completed at the organizational level and be outside of the project's:

- A. Level of control.
- B. Communication channels.
- C. Scope.
- D. Strategic alignment.

Answer: A

NEW QUESTION 935

- (Topic 4)

In the Estimate Activity Durations process, productivity metrics and published commercial information inputs are part of the:

- A. enterprise environmental factors.
- B. organizational process assets.
- C. project management plan,
- D. project funding requirements.

Answer: A

NEW QUESTION 937

- (Topic 4)

Which of the following is a tool or technique used in the Determine Budget process?

- A. Variance analysis
- B. Three-point estimating
- C. Bottom-up estimating
- D. Historical relationships

Answer: D

NEW QUESTION 942

- (Topic 4)

The Administer Procurements process is in which of the following Project Management Process Groups?

- A. Planning
- B. Monitoring and Controlling
- C. Initiating
- D. Executing

Answer: B

NEW QUESTION 944

- (Topic 4)

The process of monitoring the status of the project and product scope as well as managing the changes to the scope baseline is known as:

- A. Validate Scope.
- B. Plan Scope Management.
- C. Control Scope.
- D. Define Scope.

Answer: C

NEW QUESTION 946

- (Topic 4)

The following chart contains information about the tasks in a project.

Task	PV	AC	EV
1	10,000	10,000	10,000
2	10,000	8,000	10,000
3	10,000	8,000	8,000
4	9,000	12,000	10,000
5	10,000	12,000	12,000
6	10,000	10,000	12,000
7	12,000	12,000	10,000
8	10,000	8,000	9,000
9	12,000	10,000	11,000

Based on the chart, what is the cost variance (CV) for Task 6?

- A. -2,000
- B. 1,000
- C. 2,000

Answer: D

NEW QUESTION 949

- (Topic 4)

Which quality control technique illustrates the 80/20 principle?

- A. Ishikawa diagram
- B. Control chart
- C. Run chart
- D. Pareto chart

Answer: D

NEW QUESTION 954

- (Topic 4)

Which output of Project Cost Management consists of quantitative assessments of the probable costs required to complete project work?

- A. Activity cost estimates
- B. Earned value management
- C. Cost management plan
- D. Cost baseline

Answer: A

NEW QUESTION 958

- (Topic 4)

A technique used to determine the cause and degree of difference between baseline and actual performance is:

- A. Product analysis.

- B. Variance analysis.
- C. Document analysis,
- D. Decomposition.

Answer: B

NEW QUESTION 963

- (Topic 4)

Analogous cost estimating relies on which of the following techniques?

- A. Expert judgment
- B. Project management software
- C. Vendor bid analysis
- D. Reserve analysis

Answer: A

NEW QUESTION 966

- (Topic 4)

The total of the planned value (PV) is also known as:

- A. work breakdown structure (WBS).
- B. schedule target.
- C. performance measurement baseline (PMB).
- D. earned value baseline.

Answer: C

NEW QUESTION 967

- (Topic 4)

Schedule milestones and a predefined budget are examples of:

- A. Project constraints.
- B. Requirements documentation.
- C. Organizational process assets.
- D. Activity cost estimates.

Answer: A

NEW QUESTION 971

- (Topic 4)

What is the critical chain method?

- A. A technique to calculate the theoretical early start and finish dates and late start and finish dates
- B. A schedule network analysis technique that modifies the project schedule to account for limited resources
- C. A schedule compression technique that analyzes cost and schedule trade-offs to determine how to obtain the greatest amount of compression for the least incremental cost
- D. A technique to estimate project duration when there is a limited amount of detailed information about the project

Answer: B

NEW QUESTION 974

- (Topic 4)

Which Activity Duration Estimating technique incorporates additional timing for contingency purposes?

- A. Analogous Estimating
- B. Expert Judgment
- C. Optimistic Estimates
- D. Reserve Analysis

Answer: D

NEW QUESTION 975

- (Topic 4)

Which standard examines an enterprise's project management process capabilities?

- A. PMBOK Guide
- B. The Standard for Program Management
- C. Organizational Project Management Maturity Model "OPMJ
- D. The Standard for Portfolio Management

Answer: C

NEW QUESTION 980

- (Topic 4)

An element of the modern quality management approach used to achieve compatibility with the International Organization for Standardization (ISO) is known as:

- A. Forecasting,
- B. Brainstorming.
- C. Historical databases.
- D. Cost of quality.

Answer: D

NEW QUESTION 984

- (Topic 4)

The CPI is .92, and the EV is US\$172,500. What is the actual cost of the project?

- A. US\$158,700
- B. US\$172,500
- C. US\$187,500
- D. US\$245,600

Answer: C

NEW QUESTION 985

- (Topic 4)

Which key interpersonal skill of a project manager is defined as the strategy of sharing power and relying on interpersonal skills to convince others to cooperate toward common goals?

- A. Collaboration
- B. Negotiation
- C. Decision making
- D. Influencing

Answer: D

NEW QUESTION 989

- (Topic 4)

The purpose of inspection in Perform Quality Control is to keep errors:

- A. in line with a measured degree of conformity.
- B. out of the hands of the customer.
- C. in a specified range of acceptable results.
- D. out of the process.

Answer: C

NEW QUESTION 994

- (Topic 4)

Which of the following processes audits the quality requirements and the results from quality control measures to ensure appropriate quality standards and operational definitions are used?

- A. Perform Quality Control
- B. Quality Metrics
- C. Perform Quality Assurance
- D. Plan Quality

Answer: C

NEW QUESTION 998

- (Topic 4)

Which input may influence quality assurance work and should be monitored within the context of a system for configuration management?

- A. Work performance data
- B. Project documents
- C. Scope baseline
- D. Requirements documentation

Answer: B

NEW QUESTION 999

- (Topic 4)

Outputs of the Control Communications process include:

- A. expert judgment and change requests
- B. work performance information and change requests
- C. project management plan updates and work performance information
- D. issue logs and organizational process assets updates

Answer: B

NEW QUESTION 1001

- (Topic 4)

As part of a mid-project evaluation, your project sponsor has asked you to provide a forecast of total project cost. You should calculate the forecast using which of the following methods?

- A. BAC
- B. EAC
- C. ETC
- D. WBS

Answer: B

NEW QUESTION 1002

- (Topic 4)

Which technique is utilized in the Schedule Control process?

- A. Performance Measure
- B. Baseline Schedule
- C. Schedule Comparison
- D. Variance Analysis

Answer: D

NEW QUESTION 1004

- (Topic 4)

The process improvement plan details the steps for analyzing processes to identify activities which enhance their:

- A. quality.
- B. value.
- C. technical performance.
- D. status.

Answer: B

NEW QUESTION 1008

- (Topic 4)

The project budget is set at \$150,000. The project duration is planned to be one year. At the completion of Week 16 of the project, the following information is collected: Actual cost

= \$50,000, Plan cost = \$45,000, Earned value = \$40,000. What is the cost performance index?

- A. 0.8
- B. 0.89
- C. 1.13
- D. 1.25

Answer: A

NEW QUESTION 1013

- (Topic 4)

Which of the following events would result in a baseline update?

- A. A project is behind schedule and the project manager wants the baseline to reflect estimated actual completion.
- B. A customer has approved a change request broadening the project scope and increasing the budget.
- C. One of the risks identified in the risk management plan occurs, resulting in a schedule delay.
- D. One of the key project team resources has left the team and no replacement is available.

Answer: B

NEW QUESTION 1017

- (Topic 4)

Which type of analysis is used to examine project results through time to determine if performance is improving or deteriorating?

- A. Control chart
- B. Earned value
- C. Variance
- D. Trend

Answer: D

NEW QUESTION 1022

- (Topic 4)

Organizational process assets, a lessons-learned database, and historical information are all inputs to which process?

- A. Plan Cost Management
- B. Plan Scope Management
- C. Plan Stakeholder Management
- D. Plan Schedule Management

Answer: C

NEW QUESTION 1023

- (Topic 4)

The chart below is an example of a:

ID	Requirements Description	Project Objectives	WBS Deliverables	Product Design	Product Development	Test Cases
001						
002						
003						

- A. Responsibility assignment matrix (RAM)
- B. Work breakdown structure (WBS)
- C. RACI chart
- D. Requirements traceability matrix

Answer: D

NEW QUESTION 1027

- (Topic 4)

Which of the following is an output of the Monitor and Control Project Work process?

- A. Change requests
- B. Performance reports
- C. Organizational process assets
- D. Project management plan

Answer: A

NEW QUESTION 1031

- (Topic 4)

Which of the following schedule network analysis techniques is applied when a critical path method calculation has been completed and resources availability is critical?

- A. Applying calendars
- B. Resource leveling
- C. Resource planning
- D. Resource conflict management

Answer: B

NEW QUESTION 1033

- (Topic 4)

Testing falls into which of the following categories of cost of quality?

- A. Internal failure costs
- B. Prevention costs
- C. Appraisal costs
- D. External failure costs

Answer: C

NEW QUESTION 1037

- (Topic 4)

Cost baseline is an output of which of the following processes?

- A. Estimate Activity Resources
- B. Estimate Costs
- C. Determine Budget
- D. Control Costs

Answer: C

NEW QUESTION 1040

- (Topic 4)

Which type of dependency is established based on knowledge of best practices within a particular application area or some unusual aspect of the project in which a specific sequence is desired, even though there may be other acceptable sequences?

- A. External

- B. Internal
- C. Mandatory
- D. Discretionary

Answer: D

NEW QUESTION 1043

- (Topic 4)

The approaches, tools, and data sources that will be used to perform risk management on a project are determined by the:

- A. Methodology
- B. Risk category
- C. Risk attitude
- D. Assumption analysis

Answer: A

NEW QUESTION 1046

- (Topic 4)

Cost variance (CV) is equal to earned value:

- A. Minus actual cost [EV - AC].
- B. Minus planned value [EV - PV].
- C. Divided by actual cost [EV/AC].
- D. Divided by planned value [EV/PV].

Answer: A

NEW QUESTION 1048

- (Topic 4)

An output of the Develop Project Team process is:

- A. Organizational process assets.
- B. Enterprise environmental factors updates.
- C. Project staff assignments.
- D. Organizational charts and position descriptions.

Answer: B

NEW QUESTION 1050

- (Topic 4)

When a permitting agency takes longer than planned to issue a permit, this can be described as a risk:

- A. event.
- B. response,
- C. perception.
- D. impact.

Answer: A

NEW QUESTION 1052

- (Topic 4)

Which technique helps to determine the risks that have the most potential impact on a project?

- A. Cost risk simulation analysis
- B. Expected monetary value analysis
- C. Modeling and simulation
- D. Sensitivity analysis

Answer: D

NEW QUESTION 1057

- (Topic 4)

A key benefit of the Manage Communications process is that it enables:

- A. The best use of communication methods.
- B. An efficient and effective communication flow.
- C. Project costs to be reduced.
- D. The best use of communication technology.

Answer: B

NEW QUESTION 1058

- (Topic 4)

What is the minimum a project schedule must include?

- A. Variance analysis
- B. A planned start date and a planned finish date for each schedule activity
- C. A critical path diagram
- D. Critical chain analysis

Answer: B

NEW QUESTION 1059

- (Topic 4)

The CPI is .92, and the EV is US\$172,500. What is the actual cost of the project?

- A. US\$158,700
- B. US\$172,500
- C. US\$187,500
- D. US\$245,600

Answer: C

NEW QUESTION 1060

- (Topic 4)

While processes in the Planning Process Group seek to collect feedback and define project documents to guide project work, organizational procedures dictate when the project planning:

- A. ends.
- B. begins.
- C. delays.
- D. deviates.

Answer: A

NEW QUESTION 1062

- (Topic 4)

When does risk monitoring and control occur?

- A. At project initiation
- B. During work performance analysis
- C. Throughout the life of the project
- D. At project milestones

Answer: C

NEW QUESTION 1064

- (Topic 4)

Which Perform Quality Control tool graphically represents how various elements of a system interrelate?

- A. Control chart
- B. Flowchart
- C. Run chart
- D. Pareto chart

Answer: B

NEW QUESTION 1067

- (Topic 4)

Budgets reserved for unplanned changes to project scope and cost are:

- A. Contingency reserves.
- B. Management reserves.
- C. Authorized budgets.
- D. Cost baselines.

Answer: B

NEW QUESTION 1071

- (Topic 4)

Which type of analysis is used to determine the cause and degree of difference between the baseline and actual performance?

- A. Schedule network analysis
- B. Reserve analysis
- C. Alternative analysis
- D. Variance analysis

Answer: D

NEW QUESTION 1076

- (Topic 4)

The cost performance baseline is typically displayed in the form of:

- A. An S-curve.
- B. A normal curve.
- C. A U-curve.
- D. A positive slope line.

Answer: A

NEW QUESTION 1077

- (Topic 4)

Administer Procurements is part of which Process Group?

- A. Planning
- B. Executing
- C. Monitoring and Controlling
- D. Closing

Answer: C

NEW QUESTION 1079

- (Topic 4)

Configuration identification, configuration status accounting, and configuration verification and audit are all activities in which process?

- A. Perform Quality Assurance
- B. Direct and Manage Project Work
- C. Monitor and Control Project Work
- D. Perform Integrated Change Control

Answer: D

NEW QUESTION 1084

- (Topic 4)

When painting a bedroom, preparing the walls can be done while the paint is being chosen. This is an example of a:

- A. lead
- B. lag
- C. mandatory dependency
- D. internal dependency

Answer: A

NEW QUESTION 1088

- (Topic 4)

How is quality control performed?

- A. By identifying quality standards that are relevant to the project and determining how to satisfy them
- B. By monitoring specific project results in compliance with relevant quality standards and determining corrective actions as needed
- C. By ensuring that the entire project team has been adequately trained in quality assurance processes
- D. By applying Monte Carlo, sampling, Pareto analysis, and benchmarking techniques to ensure conformance to quality standards

Answer: B

NEW QUESTION 1093

- (Topic 4)

Which baselines make up the performance measurement baseline?

- A. Scope baseline, cost baseline, and schedule baseline
- B. Scope baseline, project management baseline, and quality baseline
- C. Cost baseline, schedule baseline, and risk baseline
- D. Cost baseline, project management baseline, and schedule baseline

Answer: A

NEW QUESTION 1097

- (Topic 4)

What is an objective of the Developing Project Team Process?

- A. Feelings of trust and improved cohesiveness
- B. Ground rules for interaction
- C. Enhanced resource availability
- D. Functional managers become more involved.

Answer: A

NEW QUESTION 1101

- (Topic 4)

Which index is the calculated projection of cost performance that must be achieved on the remaining work to meet a specified management goal?

- A. Estimate at completion
- B. Cost performance
- C. Schedule performance
- D. To-complete performance

Answer: D

NEW QUESTION 1105

- (Topic 4)

The following chart contains information about the tasks in a project.

Task	PV	AC	EV
1	10,000	10,000	10,000
2	10,000	8,000	10,000
3	10,000	8,000	8,000
4	9,000	12,000	10,000
5	10,000	12,000	12,000
6	10,000	10,000	12,000
7	12,000	12,000	10,000
8	10,000	8,000	9,000
9	12,000	10,000	11,000

Based on the chart, what is the cost performance index (CPI) for Task 2?

- A. 0.8
- B. 1
- C. 1.25
- D. 1.8

Answer: C

NEW QUESTION 1108

- (Topic 4)

Which of the following outputs from the Control Schedule process aids in the communication of schedule variance (SV), schedule performance index (SPI), or any performance status to stakeholders?

- A. Performance organizations
- B. Schedule baselines
- C. Work performance measurements
- D. Change requests

Answer: C

NEW QUESTION 1112

- (Topic 4)

Which is one of the major outputs of Sequence Activities?

- A. Responsibility assignment matrix (RAM)
- B. Work breakdown structure (WBS) update
- C. Project schedule network diagram
- D. Mandatory dependencies list

Answer: C

NEW QUESTION 1114

- (Topic 4)

When the business objectives of an organization change, project goals need to be:

- A. realigned.
- B. performed.
- C. improved.
- D. controlled.

Answer: A

NEW QUESTION 1118

- (Topic 4)

Which items are an output of the Perform Integrated Change Control process?

- A. Work performance reports
- B. Accepted deliverables
- C. Project management plan updates
- D. Organizational process assets

Answer: C

NEW QUESTION 1121

- (Topic 4)

Specification of both the deliverables and the processes is the focus of:

- A. Change control
- B. Configuration control
- C. Project monitoring and control
- D. Issue control

Answer: A

NEW QUESTION 1125

- (Topic 5)

At the completion of a project, a report is prepared that details the outcome of the research conducted on a global trend during the project. Which item did this project create?

- A. Result
- B. Product
- C. Service
- D. Improvement

Answer: A

NEW QUESTION 1128

- (Topic 5)

Which conflict resolution technique searches for solutions that bring some degree of satisfaction to all parties in order to temporarily or partially resolve the conflict?

- A. Force/direct
- B. Withdraw/avoid
- C. Compromise/reconcile
- D. Collaborate/problem solve

Answer: C

NEW QUESTION 1133

- (Topic 5)

The completion of the project scope is measured against the:

- A. requirements documentation.
- B. project scope statement.
- C. project management plan.
- D. work performance measurements.

Answer: C

NEW QUESTION 1134

- (Topic 5)

Which of the following is a statistical concept that calculates the average outcome when the future includes scenarios that may or may not happen?

- A. Sensitivity analysis
- B. Three-point estimate
- C. Modeling and simulation
- D. Expected monetary value analysis

Answer: D

NEW QUESTION 1137

- (Topic 5)

When is a project finished?

- A. After verbal acceptance of the customer or sponsor
- B. After lessons learned have been documented in contract closure
- C. When the project objectives have been met
- D. After resources have been released

Answer: C

NEW QUESTION 1138

- (Topic 5)

Which of the following is a set of interrelated actions and activities performed to achieve a prespecified product, result, or service?

- A. Portfolio
- B. Process
- C. Project
- D. Program

Answer: B

NEW QUESTION 1142

- (Topic 5)

Which schedule compression technique has phases or activities done in parallel that would normally have been done sequentially?

- A. Crashing
- B. Fast tracking
- C. Leads and lags adjustment
- D. Parallel task development

Answer: B

NEW QUESTION 1147

- (Topic 5)

Which of the following is an example of the simplest fixed-price contract?

- A. Purchase requisition
- B. Purchase order
- C. Verbal agreement
- D. Request for quote

Answer: B

NEW QUESTION 1150

- (Topic 5)

Conditions that are not under the control of the project team that influence, direct, or constrain a project are called:

- A. Enterprise environmental factors
- B. Work performance reports
- C. Organizational process assets
- D. Context diagrams

Answer: A

NEW QUESTION 1155

- (Topic 5)

Which of the following is a tool or technique of the Define Activities process?

- A. Rolling wave planning
- B. Precedence diagramming method (PDM)
- C. Alternatives analysis
- D. Parametric estimating

Answer: A

NEW QUESTION 1159

- (Topic 5)

Sensitivity analysis is typically displayed as a/an:

- A. Decision tree diagram.
- B. Tornado diagram.
- C. Pareto diagram.
- D. Ishikawa diagram.

Answer: B

NEW QUESTION 1164

- (Topic 5)

Updates to organizational process assets such as procurement files, deliverable acceptances, and lessons learned documentation are typical outputs of which process?

- A. Close Project or Phase
- B. Conduct Procurements
- C. Control Procurements
- D. Close Procurements

Answer: D

NEW QUESTION 1165

- (Topic 5)

Procurement audits, negotiated settlements, and a records management system are tools and techniques used in which Procurement Management process?

- A. Close Procurements
- B. Administer Procurements
- C. Plan Procurements
- D. Conduct Procurements

Answer: A

NEW QUESTION 1170

- (Topic 5)

When alternative dispute resolution (ADR) is necessary, which tool or technique should be utilized?

- A. Interactive communication
- B. Claims administration
- C. Conflict management
- D. Performance reporting

Answer: B

NEW QUESTION 1173

- (Topic 5)

Project or phase closure guidelines or requirements, historical information, and the lessons learned knowledge base are examples of which input to the Close Project or Phase process?

- A. Organizational process assets
- B. A work breakdown structure
- C. The project management plan
- D. Enterprise environmental factors

Answer: A

NEW QUESTION 1174

- (Topic 5)

Types of internal failure costs include:

- A. inspections.
- B. equipment and training.
- C. lost business.
- D. reworking and scrapping.

Answer: D

NEW QUESTION 1175

- (Topic 5)

During which process would you obtain stakeholders' formal acceptance of the completed project scope?

- A. Quality control
- B. Scope verification
- C. Scope control
- D. Close project

Answer: B

NEW QUESTION 1176

- (Topic 5)

If the most likely duration of an activity is five weeks, the best-case duration is two weeks, and the worst-case duration is 14 weeks, how many weeks is the expected duration of the activity?

- A. One
- B. Five
- C. Six
- D. Seven

Answer: C

NEW QUESTION 1178

- (Topic 5)

At the end of the project, what will be the value of SV?

- A. Positive
- B. Zero
- C. Negative
- D. Greater than one

Answer: B

NEW QUESTION 1181

- (Topic 5)

What type of planning is used where the work to be accomplished in the near term is planned in detail, while work in the future is planned at a higher level?

- A. Finish-to-start planning
- B. Rolling wave planning
- C. Short term planning
- D. Dependency determination

Answer: B

NEW QUESTION 1182

- (Topic 5)

An output of the Direct and Manage Project Work process is:

- A. Deliverables.
- B. Activity lists.
- C. A work breakdown structure.
- D. A scope statement.

Answer: A

NEW QUESTION 1184

- (Topic 5)

Which of the following is a conflict resolution technique that emphasizes areas of agreement rather than areas of difference?

- A. Compromising
- B. Collaborating
- C. Smoothing
- D. Problem Solving

Answer: C

NEW QUESTION 1187

- (Topic 5)

Sharing good practices introduced or implemented in similar projects in the organization and/or industry is an example of:

- A. quality audits
- B. process analysis
- C. statistical sampling
- D. benchmarking

Answer: A

NEW QUESTION 1191

- (Topic 5)

Conflict should be best addressed in which manner?

- A. Early, in private, using a direct, collaborative approach
- B. Early, in public, using an indirect, collaborative approach

- C. Early, in private, using an indirect, cooperative approach
- D. As late as possible, in public, using a direct, confrontational approach

Answer: A

NEW QUESTION 1192

.....

THANKS FOR TRYING THE DEMO OF OUR PRODUCT

Visit Our Site to Purchase the Full Set of Actual PMP Exam Questions With Answers.

We Also Provide Practice Exam Software That Simulates Real Exam Environment And Has Many Self-Assessment Features. Order the PMP Product From:

<https://www.2passeasy.com/dumps/PMP/>

Money Back Guarantee

PMP Practice Exam Features:

- * PMP Questions and Answers Updated Frequently
- * PMP Practice Questions Verified by Expert Senior Certified Staff
- * PMP Most Realistic Questions that Guarantee you a Pass on Your FirstTry
- * PMP Practice Test Questions in Multiple Choice Formats and Updatesfor 1 Year