

Microsoft

Exam Questions PL-900

Microsoft Power Platform Fundamentals



NEW QUESTION 1

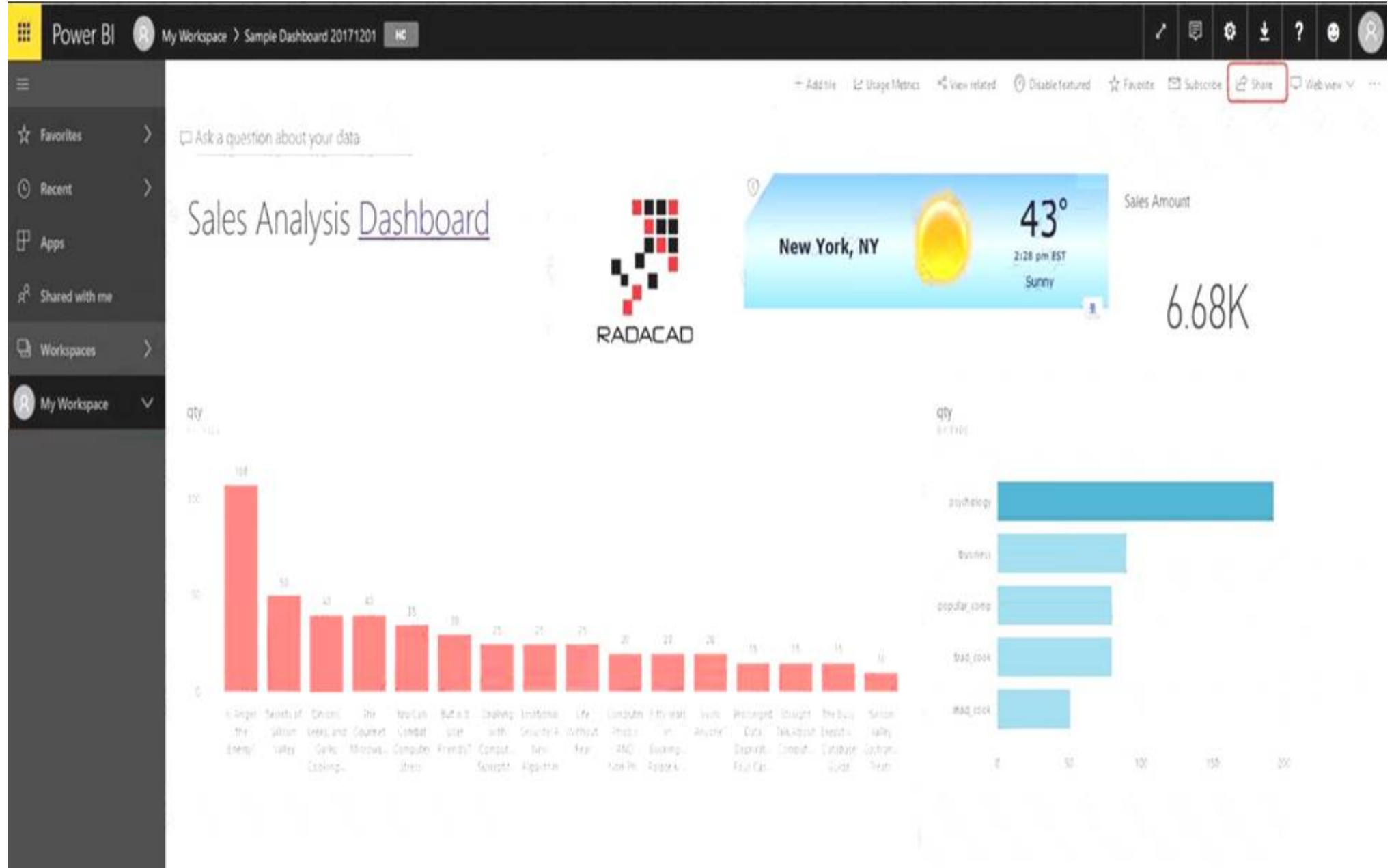
You create a Power BI dashboard that displays data from Dynamics 365 Customer Engagement. You need to share the Power BI dashboard with coworkers. What are three possible ways to achieve the goal? Each correct answer presents a complete solution.
 NOTE: Each correct selection is worth one point.

- A. Create a Power BI workspace and grant coworkers permissions.
- B. Publish the dashboard as an app to your coworkers.
- C. Export the data into Common Data Service for others to manipulate in Power BI.
- D. Export the data to Microsoft Excel for coworkers to import and view in Power BI.
- E. Embed reports in your company's internal web portal.

Answer: ABE

Explanation:

A: Basic Sharing for Dashboards and Reports through a workspace is the most common way of sharing the Power BI content. Basic Sharing is very simple and easy to use method. You can simply click on the Share button in the dashboard or report, and then share it with other users.



B: Apps are great sharing method for multiple environment, and best way of sharing for users in production environment.

Power BI App is the solution for multiple environment approach. With Power BI App, your development environment (workspace), and user environment (App) are isolated from each other.

Note: If you are using SharePoint online as a portal for document management and some other reasons already, then consider using Embed in SharePoint Online feature of Power BI reports. This method is secure and you can share the report only with Power BI users you want.

E: Sometimes, you don't need a secure way of sharing, you may search for an easy and free way of sharing, and your content is not confidential or sensitive. Publish to web is your friend in such situation. This is the only free way of sharing in Power BI, but be aware that this method is not secure.

Publish to web method, gives you an embed code, which you can use in any web pages to embed the Power BI report in it

NEW QUESTION 2

You use Microsoft Flow to create a flow that automatically sends email to a project manager when project team members mark a task as complete. Project team members are prematurely marking tasks as complete. You must add quality control into the process by sending an email to a project lead for confirmation that the task is in fact complete before sending the email to the project manager. You need to modify the flow. Which component should you use?

- A. a process argument
- B. a condition
- C. an expression
- D. a trigger
- E. an action

Answer: B

Explanation:

Use a condition and set the action to send an email.

NEW QUESTION 3

You are creating a model-driven Power Apps app. You want to ensure that the app can be used by individuals who have vision impairments. For each of the following statements, select Yes if the statement is true. Otherwise, select No. NOTE: Each correct selection is worth one point.

Statement	Yes	No
Power Apps apps can be built with hot key support and designed so they do not require a touch screen or mouse.	<input type="radio"/>	<input type="radio"/>
Only model-driven Power Apps have support for using a screen reader without the need for a connector.	<input type="radio"/>	<input type="radio"/>
The accessibility checker can be run for your Power Apps app to provide notifications of accessibility violations as well as tips for making it even more user friendly.	<input type="radio"/>	<input type="radio"/>

- A. Mastered
- B. Not Mastered

Answer: A

Explanation:

Box 1: Yes

You can use keyboard shortcuts in PowerApps. Keyboard shortcuts give you an alternate way to do common tasks instead of using your mouse or tapping with your finger. They help in seamless navigation of the interface.

Box 2: No

The following software combinations are the supported recommendations for consuming PowerApps with a screen reader:

Windows: Microsoft Edge / Narrator macOS: Safari / VoiceOver Android: PowerApps app / Talkback iOS: PowerApps app / VoiceOver

Box 3: Yes

Users who have vision, hearing, or other impairments can use your canvas app more easily and successfully if you consider accessibility as you design how the app looks and behaves. If you're not sure how to make your app more accessible, you can run the Accessibility checker in PowerApps Studio. This tool not only finds potential accessibility issues but also explains why each might be a potential problem for users who have a specific disability and offers suggestions on how to resolve each issue. The Accessibility checker detects screen-reader and keyboard issues for you, and you can find information about how to fix color-contrast issues by using accessible colors.

NEW QUESTION 4

A company uses Microsoft Flow.

Each time a work order is created, a service manager must review and approve the work order before a worker is dispatched.

You need to create a flow to enforce the process. What should you create?

- A. plug-in
- B. approval flow
- C. business rule
- D. team flow
- E. instant flow

Answer: B

Explanation:

With Power Automate, you can manage the approval of documents or processes across several services, including SharePoint, Dynamics 365, Salesforce, OneDrive for Business, Zendesk, or WordPress.

NEW QUESTION 5

You are a customer service manager.

You need to implement a Power Apps portal that allows customers to submit cases. Which type of data source is used?

- A. Dynamics 365 Connector

- B. Microsoft SharePoint
- C. Microsoft Azure Storage
- D. Common Data Service

Answer: B

Explanation:

SharePoint can be set up to setup customer feedback.
Note: The PowerApp uses Finance and Operations connector to grab sales order information and SharePoint connector to connect and write the data to SharePoint list.

NEW QUESTION 6

A coworker is creating an app in Power Apps and needs to automatically synchronize data from an external source. The coworker is unable to locate a suitable Microsoft approved connector template in AppSource. You need to recommend a solution for the coworker. What should you recommend?

- A. Create a custom connector.
- B. Ask the outside source to send you the data once a week.
- C. Use Microsoft Flow to connect to the database.
- D. Open a ticket with Microsoft and request a new connector.
- E. Use Microsoft Azure Service Bus.

Answer: A

Explanation:

There are 250 + predefined connectors that you can use in your PowerApps and in your Microsoft Flows. If you do not find any that suits your needs you have the possibility to create a Custom Connector.
Note: A Custom Connector is a wrapper around a REST API (Logic Apps also supports SOAP APIs) that allows Logic Apps, Microsoft Flow, or PowerApps to communicate with that REST or SOAP API.

NEW QUESTION 7

A company plans to implement solutions that use Common Data Service as a data storage. You need to recommend features to meet the company's needs. Which features should you recommend? To answer, drag the appropriate features to the correct requirements. Each feature may be used once, more than once, or not at all. You may need to drag the split bar between panes or scroll to view content.
NOTE: Each correct selection is worth one point.

Features	Requirement	Feature
business rules		
business process flows	Validate data across multiple fields and entities regardless of the app used to create data.	Feature
Common Data Model	Create visual guides to ensure that users enter data and perform tasks in a consistent manner.	Feature
	Accelerate development by using a standard set of entities for the most common scenarios.	Feature

- A. Mastered
- B. Not Mastered

Answer: A

Explanation:

Box 1: business rules
You can create business rules and recommendations to apply logic and validations without writing code or creating plug-ins. Business rules provide a simple interface to implement and maintain fast-changing and commonly used rules.
Box 2: business process flows
Flows Power Automate includes several types of processes, each designed for a different purpose:

- Automated flows. Create a flow that performs one or more tasks automatically after it's triggered by an event.
- Button flows. Perform repetitive tasks simply by tapping a button on your mobile device.
- Scheduled flows. Create a flow that performs one or more tasks on a schedule such as once a day, on a specific date, or after a certain time.
- Business process flows. Ensure that people enter data consistently and follow the same steps every time they work in an app by creating a business process flow.

➤ Workflows and actions. Dynamics 365 customizers may be familiar with the classic Common Data Service processes, which are workflows and actions.

Box 3: Common Data Model

Model-driven app design is a component-focused approach to app development. Model-driven app design doesn't require code and the apps you make can be simple or very complex. Unlike canvas app development where the designer has complete control over app layout, with model-driven apps much of the layout is determined for you and largely designated by the components you add to the app.

NEW QUESTION 8

A company plans to create an information portal that managers can use to view critical information about their teams. You need to recommend the type of Power BI components that the company should use. What should you recommend? To answer, drag the appropriate components to the correct requirements. Each component may be used once, more than once, or not at all. You may need to drag the split bar between panes or scroll to view content. NOTE: Each correct selection is worth one point.

Component types	Requirement	Component type
<div>Dashboard</div>		
<div>Report</div>	Display data from a Microsoft Excel workbook that has multiple worksheets into one chart.	<div>Component type</div>
	Display the top departmental goal metrics and alert users when specific thresholds targets are met.	<div>Component type</div>
	Display Sales charts that can be filtered by region.	<div>Component type</div>

- A. Mastered
- B. Not Mastered

Answer: A

Explanation:

Box 1: Report
Reports are more detailed data displayed in many formats like chart, graphs list and in tabular, etc. Box 2: Dashboard
Dashboards are a business key performance indicator view where it displays key values that can change business profits and can be glanced at one screen. Box 3: Report
Power BI dashboards cannot slice and dice, but reports have many ways to filter and slice.
Note: Power BI dashboards are one placeholder to display the most important decision-making facts to run a business. But reports are more detailed data displayed in many formats like chart, graphs list and in tabular, etc. Reports are based on one dataset or one business unit data for example reports of a store belonging to California.

NEW QUESTION 9

A company plans to use Power BI to visualize data from business systems. For each of the following statements, select Yes if the statement is true. Otherwise, select No. NOTE: Each correct selection is worth one point.

Statement	Yes	No
You can display data aggregates and raw data in a Power BI report.	<div><input type="radio"/></div>	<div><input type="radio"/></div>
You can display related data from Dynamics 365 Customer Engagement and Excel in the same Power BI report.	<div><input type="radio"/></div>	<div><input type="radio"/></div>
You create a Power App to supply data for a Power BI report. You can modify the data directly in the report.	<div><input type="radio"/></div>	<div><input type="radio"/></div>

- A. Mastered
- B. Not Mastered

Answer: A

Explanation:

Box 1: Yes

The following list provides advantages to using aggregations:

Query performance over big data - as users interact with visuals on Power BI reports, DAX queries are submitted to the dataset. Boost query speeds by caching data at the aggregated level, using a fraction of the resources required at the detail level. Unlock big data in a way that would otherwise be impossible.

Box 2: No

You can connect to model-driven apps in Dynamics 365 with Power BI Desktop to create custom reports and dashboards for use with the Power BI service. You can use similar steps to connect to model-driven apps in Dynamics 365 using Office Excel Power Query by selecting From Other Sources on the Power Query tab in Excel.

Box 3: Yes

Using the PowerApps custom visual, you will be able to pass context aware data to a PowerApps app which updates in real time as you make changes to your report.

NEW QUESTION 10

A bank uses Power Platform apps and flows to support business processes. The company would like to use historical client data to predict whether a client's loan application is likely to be approved or rejected. You need to use AI Builder to implement the solution. Which four actions should you perform in sequence? To answer, move the appropriate actions from the list of actions to the answer area and arrange them in the correct order.

Actions

Publish the model.

Export data into AI Builder.

Train the model.

Import data into Common Data Service.

Use the model in PowerApps or Microsoft Flow.

Answer area

- A. Mastered
- B. Not Mastered

Answer: A

Explanation:

Step 1: Import data into Common Data Service. AI Builder requires the use of Common Data Service, which is the data platform for PowerApps and allows you to store and manage business data. Common Data Service is the platform on which Dynamics 365 apps are built so if you're a Dynamics 365 customer, your data is already in Common Data Service. Step 2: Train the model Step 3: Publish the model The last step is to publish your model. Step 4: Use the model in PowerApps or Microsoft Flow.

NEW QUESTION 10

A distribution company has multiple warehouses. Tax rates charged on sales orders need to be calculated based on locality and region. You need to recommend a cost-effective solution that can be implemented quickly. What should you recommend?

- A. Check AppSource for a tax add-on.
- B. Create alerts in Dynamics 365 Finance for tax table changes.
- C. Implement the Common Data Model.
- D. Run a Power BI report.
- E. Write scripts and code tax updates.

Answer: B

NEW QUESTION 12

A company plans to implement Power Platform apps. The company does not plan to use any development tools or plug-ins. Which actions can you perform? For each of the following statements, select Yes if the statement is true. Otherwise, select No. NOTE: Each correct selection is worth one point.

Statement	Yes	No
You can synchronize account names with a third-party proprietary database.	<input type="radio"/>	<input type="radio"/>
You can create invoices from orders and then send the invoices to the customer.	<input type="radio"/>	<input type="radio"/>

- A. Mastered
 B. Not Mastered

Answer: A

Explanation:

The Power Platform uses PowerApps, Power BI, and Power Automate (previously named Flow) to customize, extend, and build all the apps you need for your business and unlock the potential of Office 365 and Dynamics 365.

NEW QUESTION 14

A company uses a third party application and an approval process via email. At the end of the month, the IT department enters the data into Microsoft Excel to create pivot charts.

The Excel pivot charts must use the same data source as Dynamics 365 Field Service to generate charts and reports.

You need to recommend a solution.

What should you recommend? To answer, select the appropriate configuration in the answer area.

NOTE: Each correct selection is worth one point.

Requirement	Solution
Create an approval workflow.	<div> <input type="text"/> ▼ <div> Dynamics 365 Workflow Notifications Microsoft Outlook Integration AI Builder Microsoft Flow </div> </div>
Connect to report data.	<div> <input type="text"/> ▼ <div> Common Data Service and Power BI Third-party from AppSource Custom Code flat file integration Dynamics 365 Field Service </div> </div>

- A. Mastered
 B. Not Mastered

Answer: A

Explanation:

Box 1: Dynamics 365 Workflow notifications

You can configure the system to send email messages to users when workflow-related events occur. Note:

- Go to Navigation pane > Modules > System administration > Users > Users.
- In the list, find and select the desired record.
- On the Action pane, click User options.

➤ Click the Workflow tab. Make sure that the Notifications section is expanded. In the Notifications section, you can specify how you want the user to be notified about workflow-related events.

Box 2: Dynamics 365 Field Service

Supply Chain Management enables synchronization of business processes between Dynamics 365 Supply Chain Management and Dynamics 365 Field Service. The integration scenarios are configured by using extensible Data integrator templates and Common Data Service to enable the synchronization of business processes. Standard templates can be used to create custom integration projects, where additional standard and custom fields and entities can be mapped to adjust the integration and meet specific business needs.

NEW QUESTION 16

This question requires that you evaluate the BOLD text to determine if it is correct.

A company requires that service representatives schedule customer visits every six months. Each service representative is required to enter a scheduled task for the next checkup as they are leaving a client site. A service representative wants to automate task entry by creating a business process flow that can be initiated from the service call screen on a phone.

Review the underlined text. If it makes the statement correct, select "No change is needed." If the statement is incorrect, select the answer choice that makes the statement correct.

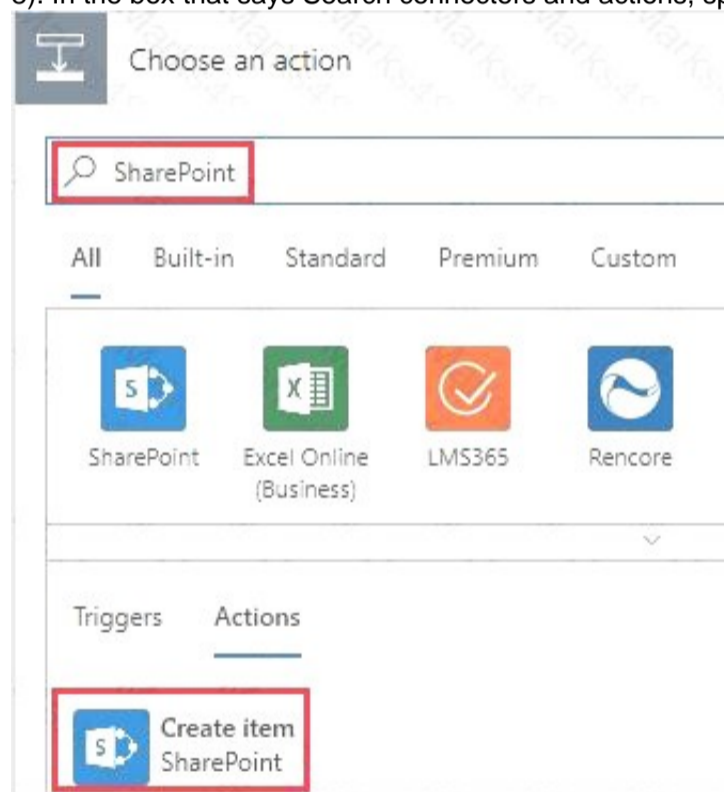
- A. No change is needed.
- B. a scheduled
- C. an instant
- D. an action

Answer: D

Explanation:

Note: Create a flow (see step 6 below)

- 1). Sign in to PowerApps.
 - 2). In the left navigation bar, select Business logic, and then select Flows.
 - 3). In the upper-left corner of the My Flows page, select New, and then select Create from blank.
 - 4). Option to create a flow without using a template
- Near the bottom of the page that appears, select Search hundreds of connections and triggers.
- 5). In the search box, type PowerApps, and then select the PowerApps icon.
 - 6). Create a PowerApps trigger
 - 7). On the next page, select the PowerApps icon again, and then select New step.
 - 8). In the box that says Search connectors and actions, specify an action for your flow, as in this example:



NEW QUESTION 20

You manage the support team at a rapidly growing company.

Customers and support technicians need a better experience when logging and responding to support requests. You need more visibility into what the support technicians are doing every week.

You need to recommend tools to help the company's needs.

Which tools should you recommend? To answer, drag the appropriate tools to the correct requirements. Each tool may be used once, more than once, or not at all. You may need to drag the split bar between panes or scroll to view content.

NOTE: Each correct selection is worth one point.

Tools	Answer Area	
	Requirement	Tool
Power Apps	Customers must be able to submit support requests by using a website.	Tool
Microsoft Flow		
Power BI	Support requests must be created and stored.	Tool
Common Data Service	Support technicians must be notified when a new support request is entered.	Tool
	Support technicians must be able to enter a status report for work completed during the previous week by using a mobile app.	Tool

- A. Mastered
- B. Not Mastered

Answer: A

Explanation:

Tools	Answer Area	
	Requirement	Tool
Power Apps	Customers must be able to submit support requests by using a website.	Power BI
Microsoft Flow		
Power BI	Support requests must be created and stored.	Common Data Service
Common Data Service	Support technicians must be notified when a new support request is entered.	Microsoft Flow
	Support technicians must be able to enter a status report for work completed during the previous week by using a mobile app.	Power Apps

NEW QUESTION 21
.....

Thank You for Trying Our Product

We offer two products:

1st - We have Practice Tests Software with Actual Exam Questions

2nd - Questions and Answers in PDF Format

PL-900 Practice Exam Features:

- * PL-900 Questions and Answers Updated Frequently
- * PL-900 Practice Questions Verified by Expert Senior Certified Staff
- * PL-900 Most Realistic Questions that Guarantee you a Pass on Your First Try
- * PL-900 Practice Test Questions in Multiple Choice Formats and Updates for 1 Year

100% Actual & Verified — Instant Download, Please Click
[Order The PL-900 Practice Test Here](#)