

Microsoft

Exam Questions mb-300

Microsoft Dynamics 365 Unified Operations Core



NEW QUESTION 1

- (Exam Topic 1)

You need to determine why the sales associate is not able to see Munson’s in the search results. What is the cause of the issue?

- A. The search criteria is searching for only names that are exactly ‘pickles’.
- B. The search criteria is only able to search by the shortened search name of the customer.
- C. The search criteria is searching for all customer names that start with ‘pickles’.
- D. The search criteria is case sensitive.

Answer: C

Explanation:

Reference:

<https://docs.microsoft.com/en-us/dynamics365/customer-engagement/basics/search-records>

NEW QUESTION 2

- (Exam Topic 2)

You plan the migration from Dynamics AX 2012 R3 to a Dynamics 365 for Finance and Operations environment. You will be using Lifecycle Services (LCS) and the tools provided with it.

You need to clean up data, review and configure SQL optimizations, and identify deprecated features in your code. What tool should you use?

- A. Microsoft Azure DevOps
- B. Upgrade analyzer
- C. Data Import/Export Framework (DIXF)
- D. Code upgrade estimation tools

Answer: B

NEW QUESTION 3

- (Exam Topic 2)

You are a Dynamics 365 for Finance and Operations system administrator.

You use Lifecycle Services (LCS) for your deployment. The company currently has multiple methodologies assigned to various projects. One methodology is incorrectly assigned and must be changed.

You need to change the methodology on an existing project.

Which two options can you use? Each correct answer presents a complete solution. NOTE: Each correct selection is worth one point.

- A. Change methodology
- B. Project settings
- C. Manage methodologies
- D. Edit methodology

Answer: AC

NEW QUESTION 4

- (Exam Topic 2)

You are a Dynamics 365 for Finance and Operations system administrator.

Users have been creating advanced queries for filter data on forms. They want to be able to save the filter data for later use and access those views when they log in.

You need to instruct them in how to do this.

Which four actions should end users perform in sequence? To answer, move the appropriate actions from the list of actions to the answer area and arrange them in the correct order.

Actions

Select the saved query.

Click Save as filter.

Click Configure.

Filter the data in the grid via the advanced filter.

Right-click and select Personalize this form.

Click Options, and then select Add to workspace.

Select the workspace and presentation.

Add the All Customers form to favorites.

Answer Area

>

<

↑

↓

- A. Mastered
- B. Not Mastered

Answer: A

Explanation:

Actions	Answer Area
Select the saved query.	Add the All Customers form to favorites.
Click Save as filter.	
Click Configure.	Click Configure.
Filter the data in the grid via the advanced filter.	Select the saved query.
Right-click and select Personalize this form.	
Click Options, and then select Add to workspace.	Click Options, and then select Add to workspace.
Select the workspace and presentation.	
Add the All Customers form to favorites.	

NEW QUESTION 5

- (Exam Topic 2)

You are a Dynamics 365 for Finance and Operations system administrator.

Data is being migrated from a customized version of a legacy application to Dynamics 365 for Finance and Operations. Some of the fields in the entity are the same, and some are different.

As a starting point, you need to automatically map as many fields as possible within Dynamics 365 for Finance and Operations.

Which feature or tool should you use?

- A. Use the Mapping visualization tool
- B. Generate source mapping
- C. Use the Data task automation tool
- D. Copy configuration data
- E. Use Data templates

Answer: A

Explanation:

References:

<https://docs.microsoft.com/en-us/dynamics365/unified-operations/dev-itpro/data-entities/data-entities-data-pack>

NEW QUESTION 6

- (Exam Topic 2)

You are a Dynamics 365 for Finance and Operations system administrator. You have production and testing environments. You move the workflow from the testing environment to the production environment.

The workflow in the production environment is stuck in a wait state.

You need to resolve the issue with the workflow in the production environment. What should you do?

- A. Set the workflow batch job to critical
- B. Set the workflow messaging batch job group
- C. Grant the user workflow permissions
- D. Set the workflow execution account in the workflow parameters

Answer: D

NEW QUESTION 7

- (Exam Topic 2)

A company implements Dynamics 365 for Finance and Operations.

You have a requirement that the component data for address structure in the system be available in Portuguese (Brazil).

You need to provide address and contact information purpose with translation. What should you do?

- A. Under Organization administration, on the Global addresses tab, enter the appropriate translation value in the translations form
- B. In User options, set the language preference to Portuguese pt-BR and enter addresses for customers and vendors
- C. Upload files to Dynamics 365 Translation Services (DTS) for conversion
- D. Apply return from Dynamics 365 Translation Services (DTS) to the system by submitting a support ticket

Answer: A

NEW QUESTION 8

- (Exam Topic 2)

Note: This question is part of a series of questions that present the same scenario. Each question in the series contains a unique solution that might meet the stated goals. Some question sets might have more than one correct solution, while others might not have a correct solution.
After you answer a question in this section, you will NOT be able to return to it. As a result, these questions will not appear in the review screen.
You are a functional consultant who is deploying Dynamics 365 for Finance and Operations. The implementation must:

- ☐ Use an iterative approach
- ☐ Integrate with real-world data
- ☐ Enforce standards and governance
- ☐ Implement multiple rounds of feedback

You need to deploy and validate the implementation.
Solution: Use the XPPBP tool to export customizations and scenarios from a development sandbox. Make changes to the sandbox containing users. Deploy from the sandbox to the production environment.
Does the solution meet the goal?

- A. Yes
- B. No

Answer: B

NEW QUESTION 9

- (Exam Topic 2)

You are a Dynamics 365 for Finance and Operations system administrator.
The expense department relies heavily on properly operating workflows. If there is a failure in the workflow, the issue needs to get resolved quickly.
You need to make sure that the system actively tracks the status, so the support team can monitor and take actions against any failures.
What should you do? Each correct answer presents a complete solution.
NOTE: Each correct selection is worth one point.

- A. Set the monitoring category of the Workflow message processing batch job to Workflow.
- B. Set the critical job flag of the Workflow message processing batch job to True.
- C. Set the Ignore task failure flag of the Workflow message processing batch job to False.
- D. Set the batch job named Workflow message processing to send an email when the status of the batch job is Error.
- E. Set the priority field of the Workflow message processing batch job to 1.

Answer: BCD

NEW QUESTION 10

- (Exam Topic 2)

A company implements Dynamics 365 for Finance and Operations. It sets up and configures the system to support reporting requirements using Microsoft Power BI.
The customer service manager wants to create reports in Power BI for analyzing customer order patterns, order fulfillment metrics, customer satisfaction KPIs, and customer service representative goal metrics. These reports compare aggregated information across multiple demographic regions and business lines for current trends against historic information.
The manager would like to use the reports to make individual team performance more visible to the managerial and executive teams. Since reports will be used by those teams as well as mobile users, the manager would like the report response to reflect the latest data without requiring the user to wait.
You need to determine which tool or functionality best fits the scenario.
Which feature or functionality should you use? To answer, select the appropriate feature or functionality in the dialog box in the answer area.
NOTE: Each correct selection is worth one point

Answer Area

Scenario	Feature or functionality
Stage the aggregate data for use by the reports.	<div>Dynamics 365 system administration settings Power BI desktop client Lifecycle Services</div>
Set the data source to use DirectQuery.	<div>Dynamics 365 system administration settings Power BI desktop client Lifecycle Services</div>
Publish the new reports to the production environment.	<div>Dynamics 365 system administration settings Power BI desktop client Lifecycle Services</div>
Configure the data refresh rate for periodic updating.	<div>Dynamics 365 system administration settings Power BI desktop client Lifecycle Services</div>

- A. Mastered
- B. Not Mastered

Answer: A

Explanation:

Answer Area

Scenario	Feature or functionality
Stage the aggregate data for use by the reports.	Dynamics 365 system administration settings Power BI desktop client Lifecycle Services
Set the data source to use DirectQuery.	Dynamics 365 system administration settings Power BI desktop client Lifecycle Services
Publish the new reports to the production environment.	Dynamics 365 system administration settings Power BI desktop client Lifecycle Services
Configure the data refresh rate for periodic updating.	Dynamics 365 system administration settings Power BI desktop client Lifecycle Services

NEW QUESTION 10

- (Exam Topic 2)

During the implementation planning process, a company decides to migrate various functional data from its legacy systems. These include accounting data, sales data, and purchasing data.

Some functional data elements reference data stored in other tables.

You need to ensure that data types and data elements are imported in the correct order.

In what order should you perform the data migration? To answer, select the appropriate configuration in the answer area.

NOTE: Each correct selection is worth one point.

Answer Area

Sequential order	Order options
Data category	Master, reference, transaction Reference, master, transaction Transaction, reference, master Transaction, master, reference
Data entity	Ledger journals, chart of accounts, account structures Chart of accounts, account structures, ledger journals Account structures, chart of accounts, ledger journals Ledger journals, account structures, chart of accounts

- A. Mastered
- B. Not Mastered

Answer: A

Explanation:

Answer Area

Sequential order

Data category

Master, reference, transaction

Reference, master, transaction

Transaction, reference, master

Transaction, master, reference

Data entity

Ledger journals, chart of accounts, account structures

Chart of accounts, account structures, ledger journals

Account structures, chart of accounts, ledger journals

Ledger journals, account structures, chart of accounts

Order options

Ledger journals, chart of accounts, account structures

Chart of accounts, account structures, ledger journals

Account structures, chart of accounts, ledger journals

Ledger journals, account structures, chart of accounts

NEW QUESTION 15

- (Exam Topic 2)
You set up security roles for the users in a company. You must use standard security roles when possible. You need to identify the standard security roles. Which of the following can you assign to a user as a standard security role?

- A. Leasing manager
- B. System engineer
- C. Business development manager
- D. Waterspider

Answer: D

NEW QUESTION 17

- (Exam Topic 2)
A company implements Dynamics 365 for Finance and Operations. You are responsible for creating a custom feature within a solution by using Microsoft Azure DevOps. Testers have found a bug while running one of the User Acceptance Testing (UAT) scripts. However, it is not a high-severity bug and has been found to not have interconnected dependencies to other branches within the process flow. You need to deploy the passed functionality features. What should you do?

- A. Exclude the specific package from the Business process modeler (BPM).
- B. Exclude the specific package from the data package in the Data management tool.
- C. Exclude the specific package from the deployable package in Microsoft Azure DevOps.
- D. Exclude the specific package from the deployable package in Configuration data manager.

Answer: C

NEW QUESTION 21

- (Exam Topic 2)
You are a Dynamics 365 for Finance and Operations implementation consultant. You plan to use automated regression testing in a company's environment, as the system will be updated frequently until automatic updates can be applied. You need to identify when and what key business object should be used during the implementation. Which business objects should you use? To answer, drag the appropriate objects to the correct component actions. Each object may be used once, more than once, or not at all. You may need to drag the split bar between panes or scroll to view content. NOTE: Each correct selection is worth one point.

Objects

Test scripts

Business requirements

Answer Area

Component actions

Generate from the analysis meetings

Use for regression testing

Generate use cases

Use in a gap analysis process

Object

Object

Object

Object

Object

- A. Mastered
- B. Not Mastered

Answer: A

Explanation:

Passing Certification Exams Made Easy

visit - <https://www.surepassexam.com>

Objects

- Test scripts
- Business requirements

Answer Area

Component actions

- Generate from the analysis meetings
- Use for regression testing
- Generate use cases
- Use in a gap analysis process

Object

- Test scripts
- Test scripts
- Business requirements
- Business requirements

NEW QUESTION 22

- (Exam Topic 2)

Note: This question is part of a series of questions that present the same scenario. Each question in the series contains a unique solution that might meet the stated goals. Some question sets might have more than one correct solution, while others might not have a correct solution.

After you answer a question in this section, you will NOT be able to return to it. As a result, these questions will not appear in the review screen.

You are a functional consultant who is deploying Dynamics 365 for Finance and Operations. The implementation must:

- ☐ Use an iterative approach
- ☐ Integrate with real-world data
- ☐ Enforce standards and governance
- ☐ Implement multiple rounds of feedback

You need to deploy and validate the implementation.

Solution: Perform a fit-gap analysis. Configure Dynamics 365 for Finance and Operations to address the functional gap. Deploy the configuration.

Does the solution meet the goal?

- A. Yes
- B. No

Answer: A

NEW QUESTION 25

- (Exam Topic 2)

You are working as a functional consultant in a new Dynamics 365 for Finance and Operations environment. Your organization conducts business within the United States, with offices in several states. The organization has legal entities defined for each state and must share common tables between entities.

Each legal entity has the following setup:

- ☐ Users
- ☐ Products
- ☐ Customers
- ☐ Tax authorities
- ☐ Payment terms
- ☐ Human Resources data
- ☐ Site-specific stock ordering

You need to consolidate reports used for financial-consolidation reporting in a new legal entity. What should you do?

- A. Define the consolidation period
- B. Specify the range of product for consolidation
- C. Define Human Resources data
- D. Create users

Answer: A

NEW QUESTION 26

- (Exam Topic 2)

You are tasked with setting up Case management in the Dynamics 365 for Finance and Operations deployment for your organization.

Your organization must use cases to track defect and enhancement reports for products, so that engineers can improve products over time. Only appropriate employees within the organization should have access to cases and related information.

* Call center employees create thousands of service cases and ensure that the proper resources are allocated for each service.

* Service department employees fix cases created by the call center and create cases for defects and enhancement suggestions when they identify them.

* Engineers review the cases from the service department while planning and designing the next version. You need to configure the tool to enable tracking of service cases and product defects and enhancements.

Which Case management settings should you choose for each category or categories? To answer, select the appropriate options in the answer area.

NOTE: Each correct selection is worth one point.

Option	Value
Category to use.	<div>General and Production</div> <div>Service and Product change</div>
Service department in which employees create cases.	<div>General</div> <div>Production</div> <div>Service</div> <div>Product change</div>
Call center in which employees create cases.	<div>General</div> <div>Production</div> <div>Service</div> <div>Product change</div>

- A. Mastered
- B. Not Mastered

Answer: A

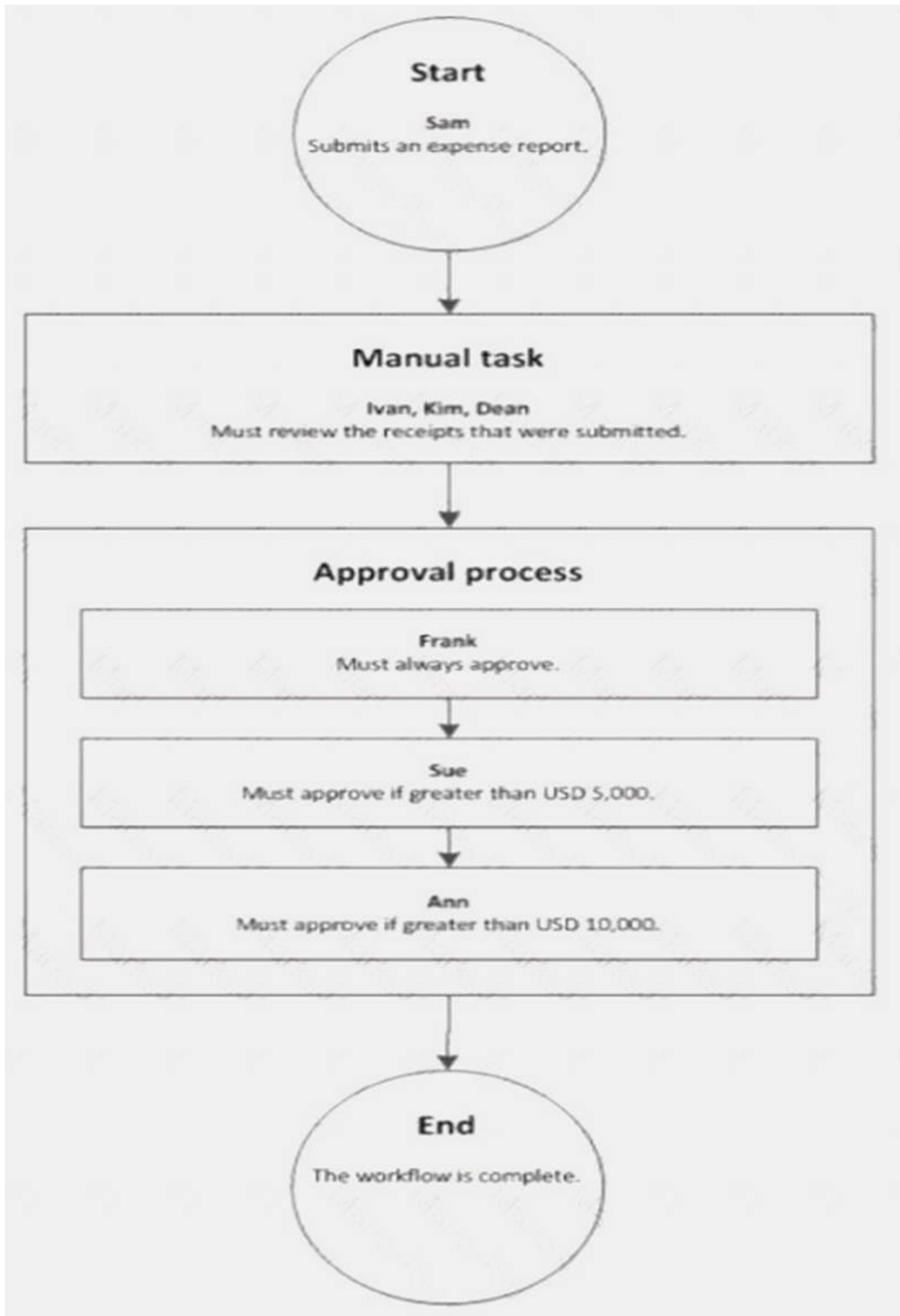
Explanation:

Option	Value
Category to use.	<div>General and Production</div> <div>Service and Product change</div>
Service department in which employees create cases.	<div>General</div> <div>Production</div> <div>Service</div> <div>Product change</div>
Call center in which employees create cases.	<div>General</div> <div>Production</div> <div>Service</div> <div>Product change</div>

NEW QUESTION 31

- (Exam Topic 2)

A company sets up a workflow for expense reports. An employee named Sam submits an expense report totaling USD 7,000 to go through the workflow.



Use the drop-down menus to select the answer choice that answers each question based on the information presented in the graphic.

NOTE: Each correct selection is worth one point.

Questions	Answer choice
What statement about the workflow is correct?	Ann can reject the expense report. Ivan, Kim, and Dean must all complete the manual task. The workflow ends after Sue approves the expense report. The expense report will go through Frank, Sue, and Ann for approval.
What type of workflow is this?	Workflow with roles Workflow with a manual decision Workflow with multiple users in a task Workflow with a line-item workflow element

- A. Mastered
- B. Not Mastered

Answer: A

Explanation:
Reference:
https://docs.microsoft.com/en-us/dynamicsax-2012/appuser-itpro/workflow-with-multiple-users-in-a-task

NEW QUESTION 36

- (Exam Topic 2)
You are a system administrator using Dynamics 365 for Finance and Operations. You work in a project-based organization. Each project has an approval process that will be assigned to different users of the system. Approvals are processed based on documents. Within those documents are different line items. Each line item may have a different approver. You need to validate if the proposed action will satisfy the requirements. For each of the following solutions, select Yes if the action meets the requirements. Otherwise, select No. NOTE: Each correct selection is worth one point.

Action	Yes	No
Configure document types. Configure document management parameters.	<input type="radio"/>	<input type="radio"/>
Create a document workflow. Configure line-item workflow elements for the document workflow.	<input type="radio"/>	<input type="radio"/>
Create workflow actions for when the document is assigned to the approver.	<input type="radio"/>	<input type="radio"/>
Set up reason codes for electronic signatures.	<input type="radio"/>	<input type="radio"/>

- A. Mastered
- B. Not Mastered

Answer: A

Explanation:

Action	Yes	No
Configure document types. Configure document management parameters.	<input checked="" type="radio"/>	<input type="radio"/>
Create a document workflow. Configure line-item workflow elements for the document workflow.	<input type="radio"/>	<input checked="" type="radio"/>
Create workflow actions for when the document is assigned to the approver.	<input checked="" type="radio"/>	<input type="radio"/>
Set up reason codes for electronic signatures.	<input checked="" type="radio"/>	<input type="radio"/>

NEW QUESTION 39

- (Exam Topic 2)
Your company acquires hundreds of partnerships after it purchases a separate company. The separate company stores the partnership records in a legacy system. You export Partnership and PartnershipGroup files from the legacy system into Microsoft Word format. You create Partnership and PartnershipGroup entities. You need to import the partnerships into Dynamics 365 for Finance and Operations. Which four actions should you perform in order? To answer, move four actions from the list of actions to the answer area and arrange them in the correct order.

Actions

Perform the data import.

Convert the Word files to OData format. In the Dynamics 365 client Data management workspace, create a new data project.

In SQL Server Management Studio, use the SQL Server Integration Services import wizard.

In the Visual Studio Finance and Operations project, use the Data entity wizard.

Convert the Word files to CSV format. In the Dynamics 365 client Data management workspace, create a new data project.

For each file, select the entities and upload the files.

Validate all entity data mapping.

Answer Area

- A. Mastered
- B. Not Mastered

Answer: A

Explanation:

Actions

Perform the data import.

Convert the Word files to OData format. In the Dynamics 365 client Data management workspace, create a new data project.

In SQL Server Management Studio, use the SQL Server Integration Services import wizard.

In the Visual Studio Finance and Operations project, use the Data entity wizard.

Convert the Word files to CSV format. In the Dynamics 365 client Data management workspace, create a new data project.

For each file, select the entities and upload the files.

Validate all entity data mapping.

Answer Area

Convert the Word files to CSV format. In the Dynamics 365 client Data management workspace, create a new data project.

Perform the data import.

In SQL Server Management Studio, use the SQL Server Integration Services import wizard.

Validate all entity data mapping.

NEW QUESTION 41

- (Exam Topic 2)

Note: This question is part of a series of questions that present the same scenario. Each question in the series contains a unique solution that might meet the stated goals. Some question sets might have more than one correct solution, while others might not have a correct solution. After you answer a question in this section, you will NOT be able to return to it. As a result, these questions will not appear in the review screen. You are configuring a Dynamics 365 for Finance and Operations environment. You must set up Microsoft Excel data exports. You need to verify that the solution will result in a successful export of data to Excel.

Solution: Use Open in Excel to open an entity form that does not share the same root data source by implementing the ExportToExcelGeneratedCustomExport interface.
Does the solution meet the goal?

A. Yes
B. No

Answer: B

NEW QUESTION 44

- (Exam Topic 2)
You set up a new instance of Dynamics 365 for Finance and Operations.
The IT department needs to track requisitions for new equipment by using unique identifiers. Due to regulatory requirements, the unique identifiers must not have missing values. Everyone in the organization will make requisitions using the unique identifiers.
You need to establish unique identifiers.
What application features should you use? To answer, select the application feature to match the parameter in the answer area.
NOTE: Each correct selection is worth one point.

Answer Area

Parameter	Application feature
System entity	Number sequences Case management Workflow system Purchasing policy
Type for a prefix of ITreq	Alphanumeric segment Constant segment
Scope	Legal entity Company Shared
Type	Non-continuous Continuous

- A. Mastered
B. Not Mastered

Answer: A

Explanation:
Reference:
<https://docs.microsoft.com/en-us/dynamics365/unified-operations/fin-and-ops/organization-administration/numb>

NEW QUESTION 47

- (Exam Topic 2)
A company plans to implement the case management feature of Dynamics 365 for Finance and Operations. You need to describe the scenarios in which you should use the case management tool. Which three scenarios should be used? Each correct answer presents a complete solution. NOTE: Each correct selection is worth one point.

A. Since case activities can be assigned to different people, a case can use workflow.
B. Although the sales module already has return-order functionality, case management is still used for customer returns and claims.
C. Knowledge articles used by case management are associated with specific functional modules.
D. A human resources generalist can use the case management tool to track employee interactions, even though the department stores confidential information about employees.
E. A case can be used to track both external and internal issues.

Answer: CDE

Explanation:
References:
<https://docs.microsoft.com/en-us/dynamics365/unified-operations/fin-and-ops/organization-administration/cases>

NEW QUESTION 48

- (Exam Topic 2)
Note: This question is part of a series of questions that present the same scenario. Each question in the series contains a unique solution that might meet the stated goals. Some question sets might have more than one correct solution, while others might not have a correct solution.
After you answer a question in this section, you will NOT be able to return to it. As a result, these questions will not appear in the review screen.
You are developing a file-based integration to Dynamics 365 for Finance and Operations.
Microsoft Excel files with 15,000 or more records need to be imported into the system periodically by individual users. The records need to be imported in full within a 5-minute approved window.
You need to determine how to accomplish the import into the system.

Solution: Import the data by using the Data Management Framework's package API. Does the solution meet the goal?

- A. Yes
- B. No

Answer: B

NEW QUESTION 50

- (Exam Topic 2)

Note: This question is part of a series of questions that present the same scenario. Each question in the series contains a unique solution that might meet the stated goals. Some question sets might have more than one correct solution, while others might not have a correct solution.

After you answer a question in this section, you will NOT be able to return to it. As a result, these questions will not appear in the review screen.

You are a Dynamics 365 for Finance and Operations system administrator. You have a test environment that is used by several people at any given time.

You create a new data entity in your development and migrate the code to the test environment. In the test environment, you are unable to find the data entity in the list.

You need to locate the data entity.

Solution: In the Data management framework parameter screen, refresh the Entity list. Does the solution meet the goal?

- A. Yes
- B. No

Answer: A

NEW QUESTION 51

- (Exam Topic 2)

You manage a Dynamics 365 for Finance and Operations environment.

In preparation for being migrated into a new environment, data packages are being numbered in alignment with the default numbering formats in Lifecycle Services. A package is named 03.01.002.

You need to identify what this package contains. To answer, select the appropriate option in the answer area. NOTE: Each correct selection is worth one point.

Segment	Component
03	<div>The environment The module The data type The month</div>
01	<div>The module The month The sequence number The data type</div>
002	<div>The sequence number The data package version The data entity The data type reference</div>

- A. Mastered
- B. Not Mastered

Answer: A

Explanation:

Segment	Component
03	<div>The environment The module The data type The month</div>
01	<div>The module The month The sequence number The data type</div>
002	<div>The sequence number The data package version The data entity The data type reference</div>

NEW QUESTION 52

- (Exam Topic 2)

A company implements Dynamics 365 for Finance and Operations.

The company wants to utilize Case management to track project issues and risks and associate them to the projects. Project managers will be responsible for managing the new cases.

You need to configure the system. What should you do?

- A. Create case subcategories named Issue and Risk.
- B. Create parent case categories named Issue and Risk.
- C. Create case activities for Issue and Risk.
- D. Create case category security roles named Issue and Risk and assign them to the Project managers duty.

Answer: A

NEW QUESTION 57

.....

Thank You for Trying Our Product

We offer two products:

1st - We have Practice Tests Software with Actual Exam Questions

2nd - Questions and Answers in PDF Format

mb-300 Practice Exam Features:

- * mb-300 Questions and Answers Updated Frequently
- * mb-300 Practice Questions Verified by Expert Senior Certified Staff
- * mb-300 Most Realistic Questions that Guarantee you a Pass on Your FirstTry
- * mb-300 Practice Test Questions in Multiple Choice Formats and Updatesfor 1 Year

100% Actual & Verified — Instant Download, Please Click
[Order The mb-300 Practice Test Here](#)