



Microsoft

Exam Questions PL-900

Microsoft Power Platform Fundamentals

About ExamBible

[Your Partner of IT Exam](#)

Found in 1998

ExamBible is a company specialized on providing high quality IT exam practice study materials, especially Cisco CCNA, CCDA, CCNP, CCIE, Checkpoint CCSE, CompTIA A+, Network+ certification practice exams and so on. We guarantee that the candidates will not only pass any IT exam at the first attempt but also get profound understanding about the certificates they have got. There are so many alike companies in this industry, however, ExamBible has its unique advantages that other companies could not achieve.

Our Advances

* 99.9% Uptime

All examinations will be up to date.

* 24/7 Quality Support

We will provide service round the clock.

* 100% Pass Rate

Our guarantee that you will pass the exam.

* Unique Gurantee

If you do not pass the exam at the first time, we will not only arrange FULL REFUND for you, but also provide you another exam of your claim, ABSOLUTELY FREE!

NEW QUESTION 1

- (Exam Topic 1)

You manage the support team at a rapidly growing company.

Customers and support technicians need a better experience when logging and responding to support requests. You need more visibility into what the support technicians are doing every week.

You need to recommend tools to help the company's needs.

Which tools should you recommend? To answer, drag the appropriate tools to the correct requirements. Each tool may be used once, more than once, or not at all. You may need to drag the split bar between panes or scroll to view content.

NOTE: Each correct selection is worth one point.

Tools	Requirement	Tool
Power Apps	Customers must be able to submit support requests by using a website.	Tool
Microsoft Flow		Tool
Power BI		Tool
Common Data Service		Tool
	Support requests must be created and stored.	Tool
	Support technicians must be notified when a new support request is entered.	Tool
	Support technicians must be able to enter a status report for work completed during the previous week by using a mobile app.	Tool

- A. Mastered
- B. Not Mastered

Answer: A

Explanation:

Requirement	Tool
Customers must be able to submit support requests by using a website.	Power BI
Support requests must be created and stored.	Common Data Service
Support technicians must be notified when a new support request is entered.	Microsoft Flow
Support technicians must be able to enter a status report for work completed during the previous week by using a mobile app.	Power Apps

NEW QUESTION 2

- (Exam Topic 2)

A company needs to create several workflows and applications to help streamline their sales operations. You need to determine which applications are appropriate for given scenarios.

Which applications should you use? To answer, select the appropriate options in the answer area. NOTE: Each correct selection is worth one point.

Scenario	Application
Create no-code workflows that use different systems.	<div><div></div><div>Azure Logic Apps</div><div>Power Apps</div><div>Power Automate</div><div>Dynamics 365 workflows</div></div>
Build a no-code mobile application.	<div><div></div><div>Azure Logic Apps</div><div>Power Apps</div><div>Power Automate</div><div>Dynamics 365 workflows</div></div>
Administer your workflow in Microsoft Azure.	<div><div></div><div>Azure Logic Apps</div><div>Power Apps</div><div>Power Automate</div><div>Dynamics 365 workflows</div></div>
Build a mobile application by using Common Data Service.	<div><div></div><div>Azure Logic Apps</div><div>Power Apps</div><div>Power Automate</div><div>Dynamics 365 workflows</div></div>

- A. Mastered
- B. Not Mastered

Answer: A

Explanation:

Reference:

<https://docs.microsoft.com/en-us/power-automate/getting-started> <https://docs.microsoft.com/en-us/azure/logic-apps/logic-apps-overview>
<https://powerapps.microsoft.com/pl-pl/blog/business-model-may/>

NEW QUESTION 3

- (Exam Topic 2)

A company uses Microsoft 365 and Dynamics 365 Sales. The company does not have any developers on its staff. You need to explain to the executives the benefits of using Power Platform apps. What are two benefits? Each correct answer presents a complete solution. NOTE: Each correct selection is worth one point.

- A. Users can send emails from Dynamics 365 Sales to their personal email addresses.
- B. Users can create Power Apps to create apps for different departments.
- C. Users can use Power Automate to share information between Microsoft 365 and Dynamics 365 Sales.
- D. The company must unify all the mobile devices to one vendor.

Answer: BC

NEW QUESTION 4

- (Exam Topic 2)

You are creating a model-driven Power Apps app. You want to ensure that the app can be used by individuals who have vision impairments. For each of the following statements, select Yes if the statement is true. Otherwise, select No. NOTE: Each correct selection is worth one point.

Statement	Yes	No
Power Apps apps can be built with hot key support and designed so they do not require a touch screen or mouse.	<input type="radio"/>	<input type="radio"/>
Only model-driven Power Apps have support for using a screen reader without the need for a connector.	<input type="radio"/>	<input type="radio"/>
The accessibility checker can be run for your Power Apps app to provide notifications of accessibility violations as well as tips for making it even more user friendly.	<input type="radio"/>	<input type="radio"/>

- A. Mastered
- B. Not Mastered

Answer: A

Explanation:

Box 1: Yes

You can use keyboard shortcuts in PowerApps. Keyboard shortcuts give you an alternate way to do common tasks instead of using your mouse or tapping with your finger. They help in seamless navigation of the interface.

Box 2: No

The following software combinations are the supported recommendations for consuming PowerApps with a screen reader:

Windows: Microsoft Edge / Narrator macOS: Safari / VoiceOver Android: PowerApps app / Talkback iOS: PowerApps app / VoiceOver

Box 3: Yes
Users who have vision, hearing, or other impairments can use your canvas app more easily and successfully if you consider accessibility as you design how the app looks and behaves. If you're not sure how to make your app more accessible, you can run the Accessibility checker in PowerApps Studio. This tool not only finds potential accessibility issues but also explains why each might be a potential problem for users who have a specific disability and offers suggestions on how to resolve each issue. The Accessibility checker detects screen-reader and keyboard issues for you, and you can find information about how to fix color-contrast issues by using accessible colors.

Reference:

<https://docs.microsoft.com/en-us/powerapps/user/keyboard-shortcuts> <https://docs.microsoft.com/en-us/powerapps/user/screen-reader>
<https://docs.microsoft.com/en-us/powerapps/maker/canvas-apps/accessibility-checker>

NEW QUESTION 5

- (Exam Topic 2)

You create a business rule on contact entity to enforce the requirement that users must enter either a telephone number, fax number, or an email when creating a new record. The company decides to remove fax number from the condition. You need to update the business rule. What are two ways of achieving the goal? Each correct answer presents a complete solution. NOTE: Each correct selection is worth one point.

- A. Save a copy of the rule and change the condition.
- B. Deactivate and delete the original rule.
- C. Deactivate the business rule and change the condition.
- D. Take a snapshot of the business rule and change the condition.
- E. Change the condition and activate the change.

Answer: AD

Explanation:

Reference:

<https://docs.microsoft.com/en-us/powerapps/maker/canvas-apps/working-with-rules>

NEW QUESTION 6

- (Exam Topic 2)

A company is evaluating Power Platform and has questions about the role that Common Data Service plays in using Power Apps and Power Automate. For each of the following statements, select Yes if the statement is true. Otherwise, select No. NOTE: Each correct selection is worth one point.

Statement	Yes	No
Model-driven apps require a Common Data Service database.	<input type="radio"/>	<input type="radio"/>
A flow instance can only access one Common Data Service database.	<input type="radio"/>	<input type="radio"/>
Canvas apps require a Common Data Service database.	<input type="radio"/>	<input type="radio"/>

- A. Mastered
B. Not Mastered

Answer: A

Explanation:

Statement	Yes	No
Model-driven apps require a Common Data Service database.	<input checked="" type="radio"/>	<input type="radio"/>
A flow instance can only access one Common Data Service database.	<input checked="" type="radio"/>	<input type="radio"/>
Canvas apps require a Common Data Service database.	<input checked="" type="radio"/>	<input type="radio"/>

NEW QUESTION 7

- (Exam Topic 2)

A company plans to use Power BI to visualize data from business systems.

For each of the following statements, select Yes if the statement is true. Otherwise, select No. NOTE: Each correct selection is worth one point.

Statement	Yes	No
You can display data aggregates and raw data in a Power BI report.	<input type="radio"/>	<input type="radio"/>
You can display related data from Dynamics 365 Customer Engagement and Excel in the same Power BI report.	<input type="radio"/>	<input type="radio"/>
You create a Power App to supply data for a Power BI report. You can modify the data directly in the report.	<input type="radio"/>	<input type="radio"/>

- A. Mastered
B. Not Mastered

Answer: A

Explanation:

Box 1: Yes

The following list provides advantages to using aggregations:

Query performance over big data - as users interact with visuals on Power BI reports, DAX queries are submitted to the dataset. Boost query speeds by caching data at the aggregated level, using a fraction of the resources required at the detail level. Unlock big data in a way that would otherwise be impossible.

Box 2: No

You can connect to model-driven apps in Dynamics 365 with Power BI Desktop to create custom reports and dashboards for use with the Power BI service.

You can use similar steps to connect to model-driven apps in Dynamics 365 using Office Excel Power Query by selecting From Other Sources on the Power Query tab in Excel.

Box 3: Yes

Using the PowerApps custom visual, you will be able to pass context aware data to a PowerApps app which updates in real time as you make changes to your report.

Reference:

<https://docs.microsoft.com/en-us/power-bi/desktop-aggregations> <https://docs.microsoft.com/en-us/power-platform/admin/use-power-bi>

<https://powerapps.microsoft.com/sv-se/blog/powerbi-powerapps-visual/>

NEW QUESTION 8

- (Exam Topic 2)

You manage the support team at a rapidly growing company. Support technicians need a better experience when logging and responding to support requests. You need to recommend tools to help the company's needs. Which tools should you recommend? To answer, drag the appropriate tools to the correct requirements. Each tool may be used once, more than once, or not at all. You may need to drag the split bar between panes or scroll to view content. NOTE: Each correct selection is worth one point.

Tools	Answer Area	
	Requirement	Tool
Power Apps	Support technicians must be able to submit support requests by using an app.	
Power Automate	Customer data must be stored and synchronized with Dynamics 365 Finance.	
Power BI	Support technicians must be notified when a new support request is entered.	
Common Data Service		

- A. Mastered
- B. Not Mastered

Answer: A

Explanation:

Reference:
<https://docs.microsoft.com/en-us/powerapps/maker/canvas-apps/help-desk-install> <https://docs.microsoft.com/en-us/power-platform/admin/data-integrator>
<https://docs.microsoft.com/en-us/power-automate/getting-started>

NEW QUESTION 9

- (Exam Topic 2)

A business is evaluating AI Builder. Which actions can you perform? For each of the following statements, select Yes if the statement is true. Otherwise, select No. NOTE: Each correct selection is worth one point.

Statement	Yes	No
You can use a text classification model in AI Builder to retrieve text and perform sentiment analysis for ServiceNow incidents.	<input type="radio"/>	<input type="radio"/>
You can tag Instagram posts that mention your new product.	<input type="radio"/>	<input type="radio"/>
You can send results about the number of mentions of your new product in Instagram to Power BI for inclusion on a dashboard.	<input type="radio"/>	<input type="radio"/>

- A. Mastered
- B. Not Mastered

Answer: A

Explanation:

Reference:
<https://docs.microsoft.com/en-us/ai-builder/create-text-classification-model> <https://radacad.com/object-detector-app-with-ai-builder-and-power-apps>

NEW QUESTION 10

- (Exam Topic 3)

You are a regional sales manager for a large internet retailer. You create a series of Power BI reports and dashboards to help sales associates be more productive and increase sales. Sales are not increasing as expected. You need to determine if the new reports are being used and send emails to sales associates to provide guidance on how to use the reports and dashboards. Which features should you use? To answer, select the appropriate options in the answer area. NOTE: Each correct selection is worth one point.

Requirement

Send an email to the sales associates on a predetermined schedule.

	▼
Subscribe	
Share	
Favorites	
Publisher	

Quantify the adoption usage from the sales associates.

	▼
Explore	
Favorites	
Usage metrics	
Performance inspector	

- A. Mastered
- B. Not Mastered

Answer: A

Explanation:

Reference:

<https://docs.microsoft.com/en-us/power-bi/consumer/end-user-subscribe> <https://docs.microsoft.com/en-us/power-bi/service-usage-metrics>

NEW QUESTION 10

- (Exam Topic 3)

A company plans to display support call metrics on a screen that is visible to all call center staff. You need to recommend solutions to meet the company's requirements.

What should you recommend? To answer, drag the appropriate components to the correct requirements. Each component may be used once, more than once, or not at all. You may need to drag the split bar between panes or scroll to view content.

NOTE: Each correct selection is worth one point.

Components		Answer Area	
		Requirement	Component
Tile	Theme	Display a chart with incoming calls versus wait time and pin the chart to a dashboard.	Component
Template App	Alert		Component
Treemap	DirectQuery		Component
Page	Workspace	Display metrics from different datasets that have related data.	Component

- A. Mastered
- B. Not Mastered

Answer: A

Explanation:

Reference:

<https://docs.microsoft.com/en-us/power-bi/create-reports/service-dashboard-tiles> <https://docs.microsoft.com/en-us/power-bi/create-reports/service-set-data-alerts>
<https://docs.microsoft.com/en-us/power-bi/visuals/power-bi-visualization-treemaps>

NEW QUESTION 15

- (Exam Topic 3)

You are a sales representative. You create a Power BI report to visualize data from a Microsoft Excel workbook.

Users need to be able to view and share the report.

Which two actions should you perform? Each correct answer presents part of the solution. NOTE: Each correct selection is worth one point.

- A. Pin the report to a dashboard.
- B. Export the data.
- C. Publish the dashboard.
- D. Share the dashboard.

Answer: AD

Explanation:

Reference:

<https://docs.microsoft.com/en-us/power-bi/create-reports/service-dashboard-pin-live-tile-from-report> <https://docs.microsoft.com/en-us/power-bi/collaborate-share/service-share-dashboards#limitations-andconsidera>

NEW QUESTION 20

- (Exam Topic 3)

A company is using Power BI to build visualizations. The company's IT support team needs to know when to install Power BI Desktop on users' computers and where the Power BI Service will suffice to perform tasks. You need to recommend solutions for the company. What should you recommend? To answer, drag the appropriate components to the correct requirements. Each component may be used once, more than once, or not at all. You may need to drag the split bar between panes or scroll to view content. NOTE: Each correct selection is worth one point.

Tools

Power BI Service only

Power BI Desktop only

Power BI Desktop or Power BI Service

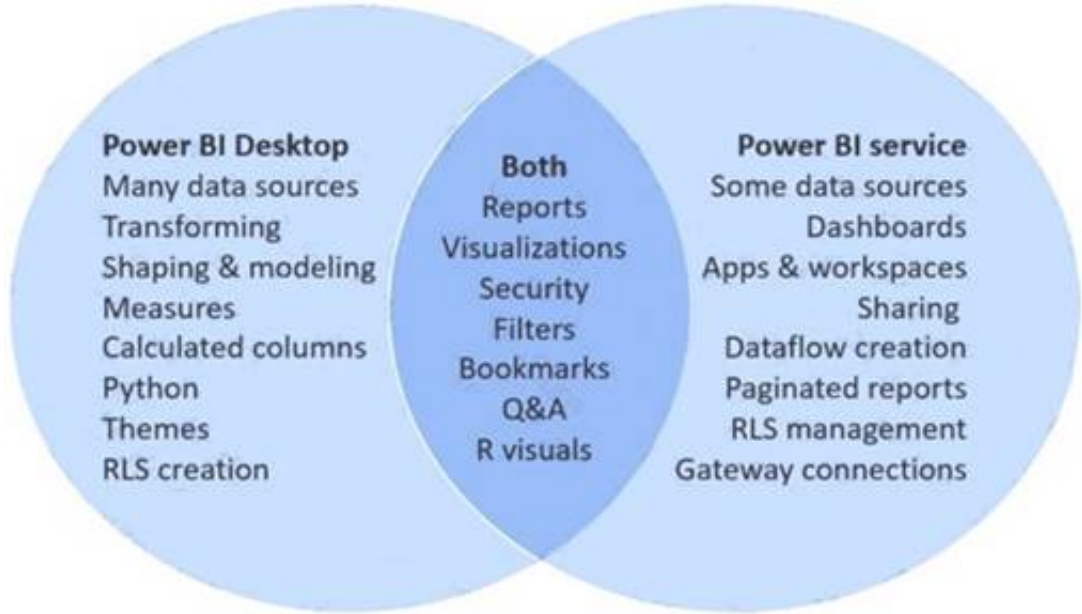
Answer Area

Requirement	Component
Create dashboards.	Tool
Create reports.	Tool
Create calculated columns.	Tool
Configure security.	Tool
Configure sharing.	Tool

- A. Mastered
- B. Not Mastered

Answer: A

Explanation: In a Venn diagram comparing Power BI Desktop and the Power BI service, the area in the middle shows how the two overlap. Some tasks you can do in either Power BI Desktop or the service. The two sides of the Venn diagram show the features that are unique to the application and the service.



Reference:
<https://docs.microsoft.com/en-us/power-bi/designer/service-service-vs-desktop>

NEW QUESTION 25

- (Exam Topic 3)
A user is starting to learn about Power Apps.
Which objects should you use? To answer, select the appropriate options in the answer area. NOTE: Each correct selection is worth one point.

A Power Apps app can call a

connector

flow

gateway

solution

Actions and triggers are properties of a

connector

flow

gateway

solution

- A. Mastered
- B. Not Mastered

Answer: A

Explanation:
Reference:
<https://docs.microsoft.com/en-us/powerapps/powerapps-overview> <https://docs.microsoft.com/en-us/power-automate/getting-started>

NEW QUESTION 26

- (Exam Topic 3)

A company plans to create an information portal that managers can use to view critical information about their teams.

You need to recommend the type of Power BI components that the company should use.

What should you recommend? To answer, drag the appropriate components to the correct requirements. Each component may be used once, more than once, or not at all. You may need to drag the split bar between panes or scroll to view content.

NOTE: Each correct selection is worth one point.

Component types	Requirement	Component type
<div>Dashboard</div>		
<div>Report</div>	Display data from a Microsoft Excel workbook that has multiple worksheets into one chart.	<div>Component type</div>
	Display the top departmental goal metrics and alert users when specific thresholds targets are met.	<div>Component type</div>
	Display Sales charts that can be filtered by region.	<div>Component type</div>

- A. Mastered
- B. Not Mastered

Answer: A

Explanation:

Box 1: Report

Reports are more detailed data displayed in many formats like chart, graphs list and in tabular, etc. Box 2: Dashboard

Dashboards are a business key performance indicator view where it displays key values that can change business profits and can be glanced at one screen.

Box 3: Report

Power BI dashboards cannot slice and dice, but reports have many ways to filter and slice.

Note: Power BI dashboards are one placeholder to display the most important decision-making facts to run a business. But reports are more detailed data displayed in many formats like chart, graphs list and in tabular, etc. Reports are based on one dataset or one business unit data for example reports of a store belonging to California.

Reference:

<https://www.educba.com/power-bi-dashboard-vs-report/>

NEW QUESTION 30

- (Exam Topic 3)

A carpet cleaning company uses Dynamics 365 Sales.

The process for entering customer information during onsite sales calls is very complicated. The company wants a simplified screen that allows salespeople to capture the customer name, phone number, and other information while speaking to the customer.

You need to recommend a solution that works on various types of mobile devices. What should you recommend?

- A. Common Data Service
- B. Microsoft Flow
- C. AI Builder
- D. Canvas app
- E. Power BI

Answer: E

Explanation:

Reference:

<https://powerapps.microsoft.com/en-us/build-powerapps/>

NEW QUESTION 35

- (Exam Topic 3)

You are using Dynamics 365 Sales.

You need to create a Power BI report that includes customer office locations. The City and State columns must be combined to form one column on the report.

What should you do?

- A. Use Power Query Editor to merge columns.
- B. Import the data.
- C. Export data to Microsoft Excel.
- D. Create a view.

Answer: A

Explanation:

Reference:

<https://support.microsoft.com/en-us/office/merge-columns-power-query-80ec9e1e-1eb6-4048-b500-d5d42d9f0a>

NEW QUESTION 38

- (Exam Topic 3)

You need to display sales orders greater than a specific threshold in a Power BI report. What should you use?

- A. Common Data Service
- B. connector

- C. Power Query
- D. filter

Answer: D

NEW QUESTION 42

- (Exam Topic 3)

A company runs a call center to handle customer support inquiries.

The company tracks metrics including the number of incoming calls, call resolution rates, and escalations. The company wants to display the metrics on a shared screen that is visible to all call center staff.

You need to recommend a solution for the company. Which Power Platform feature should you recommend?

- A. AI Builder
- B. Power Automate
- C. Power Apps
- D. Power BI

Answer: D

NEW QUESTION 46

- (Exam Topic 3)

This question requires that you evaluate the BOLD text to determine if it is correct.

You have a Power BI report with a page named RevReceived. The page shows revenue received by your company. You want to create an almost identical page that shows net revenue instead of gross revenue. To accomplish this task, you modify the RevReceived page.

Review the underlined text. If it makes the statement correct, "No change is needed". If the statement is incorrect, select the answer choice that makes the statement correct.

- A. No change is needed.
- B. duplicate the RevReceived page.
- C. import the RevReceived page.
- D. copy the visuals from RevReceived to a new page.

Answer: B

Explanation:

Reference: https://www.tutorialspoint.com/power_bi/power_bi_quick_guide.htm

NEW QUESTION 48

- (Exam Topic 3)

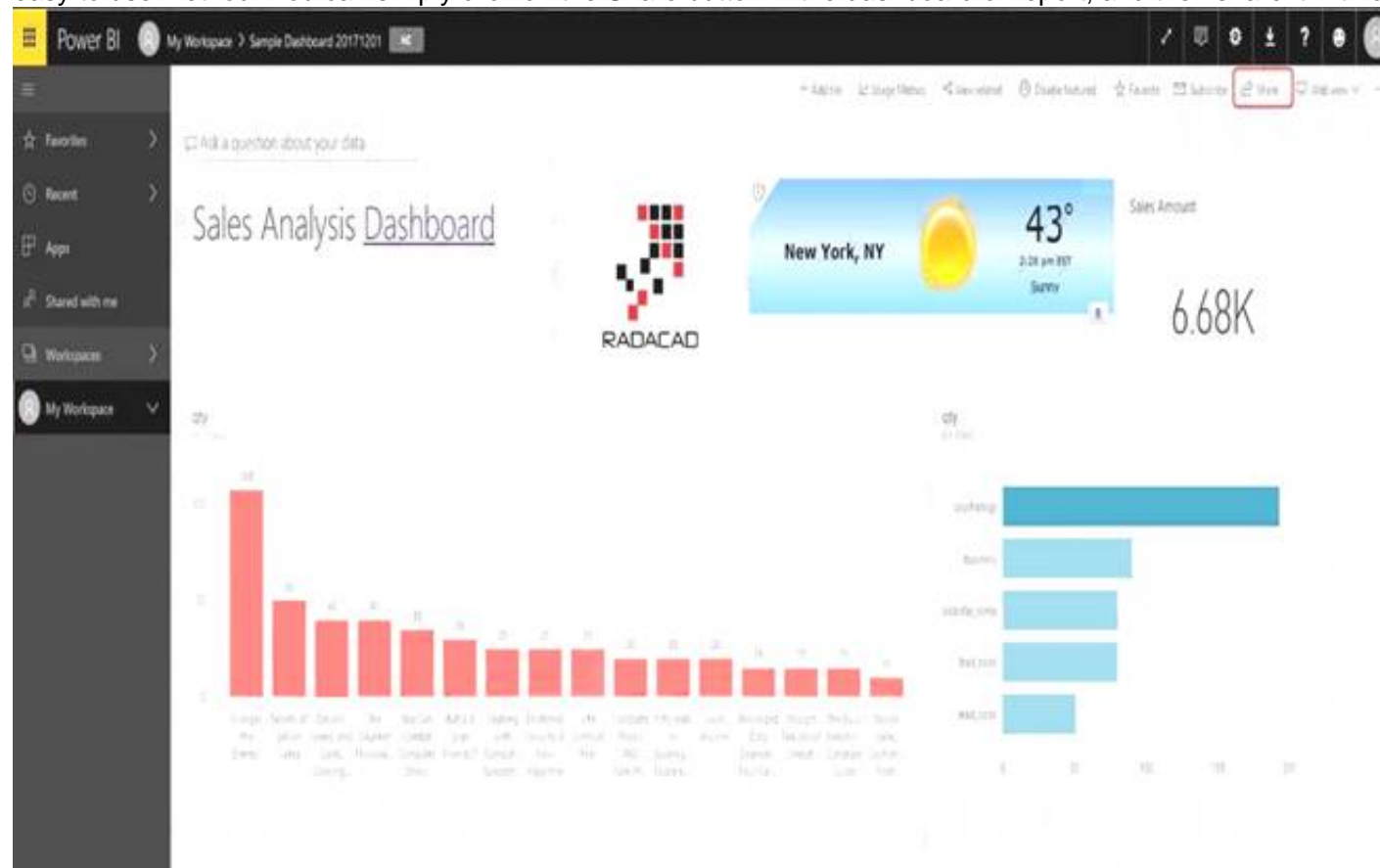
You create a Power BI dashboard that displays data from Dynamics 365 Customer Engagement. You need to share the Power BI dashboard with coworkers. What are three possible ways to achieve the goal? Each correct answer presents a complete solution. NOTE: Each correct selection is worth one point.

- A. Create a Power BI workspace and grant coworkers permissions.
- B. Publish the dashboard as an app to your coworkers.
- C. Export the data into Common Data Service for others to manipulate in Power BI.
- D. Export the data to Microsoft Excel for coworkers to import and view in Power BI.
- E. Embed reports in your company's internal web portal.

Answer: ABE

Explanation:

A: Basic Sharing for Dashboards and Reports through a workspace is the most common way of sharing the Power BI content. Basic Sharing is very simple and easy to use method. You can simply click on the Share button in the dashboard or report, and then share it with other users.



B: Apps are great sharing method for multiple environment, and best way of sharing for users in production environment.
Power BI App is the solution for multiple environment approach. With Power BI App, your development environment (workspace), and user environment (App) are isolated from each other.
Note: If you are using SharePoint online as a portal for document management and some other reasons already, then consider using Embed in SharePoint Online feature of Power BI reports. This method is secure and you can share the report only with Power BI users you want.
E: Sometimes, you don't need a secure way of sharing, you may search for an easy and free way of sharing, and your content is not confidential or sensitive.
Publish to web is your friend in such situation. This is the only free way of sharing in Power BI, but be aware that this method is not secure.
Publish to web method, gives you an embed code, which you can use in any web pages to embed the Power BI report in it
Reference:
<https://radacad.com/power-bi-sharing-methods-comparison-all-in-one-review>

NEW QUESTION 51

- (Exam Topic 4)
A company is considering implementing PowerApps to help manage business processes. Users are trying to understand the purposes and benefits of PowerApps components.
Match each benefit to its tool. To answer, drag the appropriate benefit from the column on the left to its tool on the right. Each benefit may be used once, more than once, or not at all.
NOTE: Each correct selection is worth one point.

Tools

connectors

canvas apps

AI Builder

Power Automate

portals

Answer Area

Benefit

Easy data integration

Low code / no code across applications

Easy to customize front end

Tool

- A. Mastered
- B. Not Mastered

Answer: A

Explanation:
Reference:
<https://docs.microsoft.com/en-us/power-platform/admin/data-integrator> <https://powerapps.microsoft.com/en-us/blog/create-business-apps-using-powerapps-and-azure-functions/>
<https://www.forbes.com/sites/adrianbridgwater/2019/06/17/microsoft-offers-premade-no-code-artificial-intellige>

NEW QUESTION 54

- (Exam Topic 4)
You create a Power Apps canvas app.
You need to ensure that your coworkers can run the app. What should you do?

- A. Share the app.
- B. Send the URL for the app to coworkers.
- C. Add a license for the app.
- D. Create a Flow for the app.

Answer: A

Explanation:
Reference:
<https://docs.microsoft.com/en-us/powerapps/maker/canvas-apps/share-app>

NEW QUESTION 58

- (Exam Topic 4)
A company publishes e-books for independent authors.
The company wants to implement a Power Apps portal solution to make announcements about upcoming books to the general public.
You need to recommend features for the company.
Which features should you use? To answer, select the appropriate options in the answer area. NOTE: Each correct selection is worth one point.

Requirement

Ensure that book authors can securely access their data.

Ensure consistent page design across the website.

Ensure that the public can access announcements about upcoming

Authenticate external users.
Access data in Common Data Service.
Use page templates.
Browse content anonymously.

Authenticate external users.
Access data in Common Data Service.
Use page templates.
Browse content anonymously.

Authenticate external users.
Use page templates.
Browse content anonymously.

These are the correct answers

- A. Mastered
- B. Not Mastered

Answer: A

Explanation:

Reference:

<https://www.onactuate.com/upgrades/what-is-the-new-powerapps-portal/> <https://docs.microsoft.com/en-us/powerapps/maker/portals/configure/page-templates>

NEW QUESTION 59

- (Exam Topic 4)

You create a Power App portal.

When a user signs into the portal the following error displays: user not found You confirm that the user's sign in information is correct.

You need to determine the cause of the error. What should you do?

- A. Disable custom error messages.
- B. Create a custom error message.
- C. Enable diagnostic tools in Lifecycle Services.
- D. Enable Maintenance mode.

Answer: C

Explanation:

Reference:

<https://docs.microsoft.com/en-us/dynamics365/fin-ops-core/dev-itpro/lifecycle-services/monitoring-diagnostics> <https://docs.microsoft.com/en-us/dynamics365/fin-ops-core/dev-itpro/lifecycle-services/user-logins>

NEW QUESTION 64

- (Exam Topic 4)

A company plans to build new apps for the business to allow employees to work more efficiently. You need to recommend the appropriate types of Power Apps to meet the company's requirements.

To answer, drag the appropriate app types to the correct requirements. Each app type may be used once, more than once, or not at all. You may need to drag the split bar between panes or scroll to view content.

NOTE: Each correct selection is worth one point.

App types	Answer Area	
	Requirement	App type
model-driven	Build mobile apps that use cameras and location data.	
portals	Give external users secure access to your data.	
canvas		
AI Builder		

- A. Mastered
- B. Not Mastered

Answer: A

Explanation:

Reference:

<https://docs.microsoft.com/en-us/powerapps/maker/canvas-apps/getting-started> <https://docs.microsoft.com/en-us/powerapps/maker/portals/overview>

NEW QUESTION 68

- (Exam Topic 4)

You are creating a model-driven app to track requests for quotes. The app must use the following navigation structure:

Sales

- > Sales Log
- > Request for Quotes
- > Projects
- > Settings
- > Customers
- > Product Lines
- > Sales Territories

Administration

- > User Admin
- > Users
- > Roles

You need to create the app navigation.

Which sitemap component types should you use? To answer, drag the appropriate component types to the correct navigation elements. Each component type may be used once, more than once, or not at all. You may need to drag the split bar between panes or scroll to view content.

NOTE: Each correct selection is worth one point.

Component types	Answer Area	
	Navigation element	Component type
<input type="text" value="Area"/>	Administration	<input type="text" value="Component type"/>
<input type="text" value="Group"/>	Sales log	<input type="text" value="Component type"/>
<input type="text" value="Subarea"/>	Customers	<input type="text" value="Component type"/>

- A. Mastered
- B. Not Mastered

Answer: A

Explanation:
Reference:
<https://docs.microsoft.com/en-us/dynamics365/customerengagement/on-premises/developer/customize-dev/chan>

NEW QUESTION 69

- (Exam Topic 4)
A company plans to implement Power Apps in a Power Platform environment. You need to implement other required components. Match each option to its function. To answer, drag the appropriate option from the column on the left to its function on the right. Each option may be used once, more than once, or not at all.
NOTE: Each correct match is worth one point.

Products	Answer Area	
	Function	Product
<input type="text" value="Microsoft Azure"/>	Implement user authentication.	<input type="text"/>
<input type="text" value="custom connector"/>	Send data to a Microsoft OneNote notebook in the same tenant.	<input type="text"/>
<input type="text" value="Microsoft Flow"/>		
<input type="text" value="model-driven app"/>		
<input type="text" value="canvas app"/>		

- A. Mastered
- B. Not Mastered

Answer: A

Explanation:
Reference:
<https://powerapps.microsoft.com/en-us/blog/implementing-role-based-permission/> <https://www.encorebusiness.com/blog/powerapps-flow-can/>

NEW QUESTION 74

- (Exam Topic 4)
A company is building a model-driven app. You need to create and configure the objects needed for the app. Which component categories should you use? To answer, drag the appropriate component categories to the correct objects. Each component category may be used once, more than once, or not at all. You may need to drag the split bar between panes or scroll to view content.
NOTE: Each correct selection is worth one point.

Component categories	Answer Area	
	Object	Component category
<input type="text" value="UI"/>	Relationship	<input type="text"/>
<input type="text" value="Data"/>	Form	<input type="text"/>
<input type="text" value="Logic"/>	Business rule	<input type="text"/>
<input type="text" value="Visulaization"/>	View	<input type="text"/>

- A. Mastered
- B. Not Mastered

Answer: A

Explanation:

Reference:
<https://docs.microsoft.com/en-us/powerapps/maker/model-driven-apps/model-driven-app-components>

NEW QUESTION 78

- (Exam Topic 4)
A company's customer-facing applications must comply with Global Data Protection Regulations (GDPR) regulations. You need to recommend actions to help ensure GDPR compliance. Which two features should the company use? Each correct answer presents part of the solution. NOTE: Each correct selection is worth one point.

- A. Prompt a user for consent to use their personal data and record the date consented.
- B. Automatically deactivate a user who has not used the portal in six months.
- C. Force a user to update security questions after a specific amount of time.
- D. Block users who are identified as minors.

Answer: AD

Explanation:

Reference: https://en.wikipedia.org/wiki/General_Data_Protection_Regulation

NEW QUESTION 79

- (Exam Topic 4)
A company uses Microsoft 365, Power Platform, and Dynamics 365. You do not assign permissions to any licensed users. Users are able to create and edit Power Apps canvas apps. In which environment are users creating and editing the apps?

- A. Production
- B. Default
- C. Sandbox

Answer: B

Explanation:

Reference:
<https://docs.microsoft.com/en-us/power-platform/admin/working-with-environments>

NEW QUESTION 83

- (Exam Topic 4)
A company is building a Power Apps Portals. You need to select page components. Which components should you use? To answer, drag the appropriate components to the correct requirements. Each component may be used once, more than once, or not at all. You may need to drag the split bar between panes or scroll to view content. NOTE: Each correct selection is worth one point.

Components

list

form

Iframe

connector

Answer Area

Requirement	Component
Display a single record from Common Data Service.	<div>Component</div>
Display a list of records from a Microsoft SharePoint list.	<div>Component</div>
Display a list of records from Common Data Service.	<div>Component</div>

- A. Mastered
- B. Not Mastered

Answer: A

Explanation:

Reference:
<https://docs.microsoft.com/en-us/powerapps/maker/portals/compose-page>
<https://docs.microsoft.com/en-us/powerapps/maker/portals/compose-page#add-iframe>

NEW QUESTION 84

- (Exam Topic 4)
You have a Microsoft Excel workbook that contains a list of tasks for a project. You store the file in OneDrive for Business. You need to create a canvas app that allows team members to update the status of their tasks. What should you use?

- A. the Generate an app from data feature
- B. a custom action in Common Data Service
- C. Power Apps Checker
- D. the Open entity data in Excel feature

Answer: A

Explanation:

Reference:
<https://docs.microsoft.com/en-us/powerapps/maker/canvas-apps/add-data-connection>

NEW QUESTION 89

- (Exam Topic 4)

A company plans to create a canvas app that connects to three databases with different proprietary database formats. What is the minimum number of connectors required?

- A. 1
- B. 2
- C. 3

Answer: B

NEW QUESTION 93

- (Exam Topic 5)

A software company plans to use Power Automate.

For each of the following statements, select Yes if the statement is true. Otherwise, select No. NOTE: Each correct selection is worth one point.

Statement	Yes	No
You must certify custom connectors before users in other departments within your organization can use the connectors.	<input type="radio"/>	<input type="radio"/>
You must use Microsoft Azure API apps to create a public custom connector.	<input type="radio"/>	<input type="radio"/>

- A. Mastered
- B. Not Mastered

Answer: A

Explanation:

Reference:

<https://docs.microsoft.com/en-us/connectors/custom-connectors/share>

NEW QUESTION 98

- (Exam Topic 5)

A business plans to including AI Builder. Which actions can you perform?

For each of the following statements, select Yes if the statement is true. Otherwise, select No.

NOTE: Each correct selection is worth one point.

Statement	Yes	No
You can use a text classification model in AI Builder to retrieve text and analyze its meaning.	<input type="radio"/>	<input type="radio"/>
You can tag Instagram posts that mention your new product.	<input type="radio"/>	<input type="radio"/>
You can send results about the number of mentions of your new product in Instagram to Power BI for inclusion on a dashboard.	<input type="radio"/>	<input type="radio"/>

- A. Mastered
- B. Not Mastered

Answer: A

Explanation:

Reference:

<https://docs.microsoft.com/en-us/ai-builder/text-classification-model-in-flow>

NEW QUESTION 101

- (Exam Topic 5)

A company provides on-site architectural consulting services to residential and business customers. The company wants to implement a simple alert system where a consultant can press a button on their mobile device to send the user's location to the company as a text notification.

You need to build a button flow that sends the notification.

In which order should you perform the actions? To answer, move all actions from the list of actions to the answer area and arrange them in the correct order.

Actions	Answer Area
Add a new step to the flow.	
Add a trigger.	
Select a connector and action to send text notifications.	
Set the actions properties.	
Save the flow.	

- A. Mastered
B. Not Mastered

Answer: A

Explanation:

Reference:

<https://docs.microsoft.com/en-us/power-automate/button-flow-with-user-input-tokens#main>

NEW QUESTION 106

- (Exam Topic 5)

You are creating a canvas app that uses one connector.

Which two objects are provided to Power Apps by the connector? Each correct answer presents a complete solution.

NOTE: Each correct selection is worth one point.

- A. tables
B. customizations
C. triggers
D. actions

Answer: AD

NEW QUESTION 111

- (Exam Topic 5)

You are learning about Power Apps and how to use triggers.

Which objects should you use? To answer, select the appropriate options in the answer area. NOTE: Each correct selection is worth one point.

Answer Area

Statement	Component
A Power Apps app can trigger this when a condition is met.	<div>connector</div> <div>Power Automate flow</div> <div>gateway</div> <div>solution</div>
Actions and triggers are properties of a	<div>connector</div> <div>gateway</div> <div>solution</div>

- A. Mastered
B. Not Mastered

Answer: A

Explanation:

Answer Area

Statement	Component
A Power Apps app can trigger this when a condition is met.	Power Automate flow
Actions and triggers are properties of a	connector

NEW QUESTION 116

- (Exam Topic 5)

A company uses Dynamics 365 Supply Chain Management.

When a sales order is created for one of the customers that a specific user manages, a Microsoft Outlook task must be created to remind the user to perform any follow up activities that are required.

You need to implement the functionality to create Outlook tasks.

Which two features should you use? Each correct answer presents part of the solution. NOTE: Each correct selection is worth one point.

- A. AI Builder
- B. Power Apps
- C. Business Events
- D. Microsoft Flow
- E. Common Data Service

Answer: CD

Explanation:

Business events in Microsoft Power Automate

Business events can be consumed in Microsoft Power Automate via the application connector. The connector has a trigger that is named when a business event occurs. This trigger can be used to subscribe to any of the business events that are available in the target instance of the application.

Reference:

<https://docs.microsoft.com/en-us/dynamics365/fin-ops-core/dev-itpro/business-events/business-events-flow>

NEW QUESTION 119

- (Exam Topic 5)

A company uses Dynamics 365 Supply Chain Management and Dynamics 365 Finance. User account data must be synchronized between the two system. You need to ensure that the synchronized data is stored in one place. What should you use?

- A. SQLServer
- B. Common Data Service
- C. Azure Active Directory
- D. Azure IoT Central

Answer: B

Explanation:

Reference:

<https://docs.microsoft.com/en-us/power-platform/admin/data-integrator>

NEW QUESTION 123

- (Exam Topic 5)

You have a Power Automate flow that saves attachments from emails into OneDrive for Business. You need to determine why the flow is not working.

What are three possible ways to achieve the goal? Each correct answer presents a complete solution. NOTE: Each correct selection is worth one point.

- A. Navigate to the Power Automate web portal and click view notifications.
- B. Enable Repair Tips for the flow.
- C. Navigate to the Action Items section of the Power Automate portal.
- D. Navigate to the Power Automate admin center and view the projects.
- E. Navigate to the flow and view the run history.

Answer: ABE

Explanation:

Reference:

<https://docs.microsoft.com/en-us/power-automate/fix-flow-failures>

NEW QUESTION 124

- (Exam Topic 5)

This question requires that you evaluate the BOLD text to determine if it is correct.

A company requires that service representatives schedule customer visits every six months. Each service representative is required to enter a scheduled task for the next checkup as they are leaving a client site. A service representative wants to automate task entry by creating a business process flow that can be initiated from the service call screen on a phone.

Review the underlined text. If it makes the statement correct, select “No change is needed.” If the statement is incorrect, select the answer choice that makes the statement correct.

- A. No change is needed.
- B. a scheduled
- C. an instant
- D. an action

Answer: D

Explanation:

Note: Create a flow (see step 6 below)

* 1. Sign in to PowerApps.

* 2. In the left navigation bar, select Business logic, and then select Flows.

* 3. In the upper-left corner of the My Flows page, select New, and then select Create from blank.

* 4. Option to create a flow without using a template

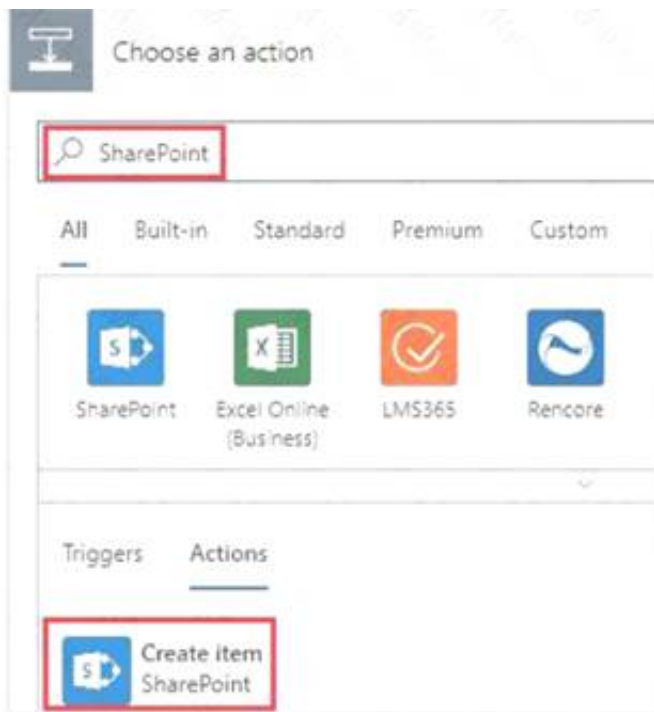
Near the bottom of the page that appears, select Search hundreds of connections and triggers.

* 5. In the search box, type PowerApps, and then select the PowerApps icon.

* 6. Create a PowerApps trigger

* 7. On the next page, select the PowerApps icon again, and then select New step.

* 8. In the box that says Search connectors and actions, specify an action for your flow, as in this example:



Reference:

<https://docs.microsoft.com/en-us/powerapps/maker/canvas-apps/using-logic-flows>

NEW QUESTION 129

- (Exam Topic 5)

A company uses Microsoft Flow.

Each time a work order is created, a service manager must review and approve the work order before a worker is dispatched.

You need to create a flow to enforce the process. What should you create?

- A. plug-in
- B. approval flow
- C. business rule
- D. team flow
- E. instant flow

Answer: B

Explanation:

With Power Automate, you can manage the approval of documents or processes across several services, including SharePoint, Dynamics 365, Salesforce, OneDrive for Business, Zendesk, or WordPress. Reference:

<https://docs.microsoft.com/en-us/power-automate/modern-approvals>

NEW QUESTION 130

- (Exam Topic 5)

A company plans to use Microsoft Flow to automate tasks.

Match each flow type to its function. To answer, drag the appropriate flow type from the column on the left to its description on the right. Each option may be used once, more than once, or not at all.

NOTE: Each correct match is worth one point.

Flow types	Answer Area	
	Description	Flow type
automated		Flow type
business process	a flow that runs after it is triggered by an event	Flow type
scheduled	a flow that guides a user through a set of tasks	Flow type
instant	a flow that runs after a specified number of days	Flow type
	a flow that allows you to start tasks on-demand	Flow type

- A. Mastered
- B. Not Mastered

Answer: A

Explanation:

Box 1: automated

Automated flows start with an event or trigger, such as an email being received. These also support a multitude of actions in the 200+ Flow connectors.

Box 2: business process

The business process flow that creates stages or screens that enforce a certain sequence of steps. It collects data from users for each step in the stage and can kick off automated workflows.

Box 3: scheduled

Scheduled flows run regular reports that are sent out to a team and summarize everything that's happened in the past week. This includes everything from simple daily scheduling to more complex scheduling like "every 3rd Monday."

Box 4: instant

An instant flow is triggered when you click a button inside of the Flow mobile app, SharePoint, Dynamics, PowerApps, or Excel that passes context directly into your flow.

Note: There are four different Flow types that you can choose from when starting out. You can create a scheduled flow, automated flow, instant flow, or a business

process flow.
Reference:
<https://www.avepoint.com/blog/office-365/office-365-automation/>

NEW QUESTION 132

- (Exam Topic 5)
A company uses Power Automate.
Which three items can trigger flows? Each correct answer presents a complete solution. NOTE: Each correct selection is worth one point.

- A. Lifecycle Services
- B. Microsoft 365 Admin center
- C. Common Data Service
- D. Microsoft Outlook 365
- E. Microsoft Windows Desktop

Answer: ACD

Explanation:
<https://docs.microsoft.com/en-us/power-automate/email-triggers> <https://docs.microsoft.com/en-us/power-automate/connection-cds>
<https://dynamics365.wordpress.com/category/powerapps/>

NEW QUESTION 133

- (Exam Topic 5)
A company is using Power Automation to automate business processes. You need to recommend triggers for Instant flows.
What trigger types should you recommend? To answer, select the appropriate options in the answer area. NOTE: Each correct selection is worth one point.

Requirement	Trigger type
Run a flow when the user presses a button in a canvas app.	<div><div></div><div>PowerApps for a selected row manually trigger a flow for a selected file (OneDrive for a Business)</div></div>
Run a flow when user presses a button in the mobile Flow app.	<div><div></div><div>PowerApps for a selected row manually trigger a flow for a selected file (SharePoint)</div></div>

- A. Mastered
- B. Not Mastered

Answer: A

Explanation:
Reference:
<https://docs.microsoft.com/en-us/powerapps/maker/canvas-apps/using-logic-flows> <https://www.o365dude.com/2017/07/15/flow-buttons-the-hidden-gem-of-microsoft-flow/>

NEW QUESTION 137

- (Exam Topic 5)
A company performs on-site inspections and services for air industrial equipment.
Field technicians must perform a series of maintenance checks every time they visit a customer site. Every technician performs maintenance tasks in a different order. Some technicians miss steps.
You need to ensure that all technicians perform the same steps in the same order. What should you use?

- A. Business process flow
- B. AI Builder
- C. Business rule
- D. Virtual Agent

Answer: A

Explanation:
You can help ensure that people enter data consistently and follow the same steps every time they work with a customer by creating a business process flow. For example, you might want to create a business process flow to have everyone handle customer service requests the same way, or to require that people get approval for an invoice before submitting an order. Business process flows use the same underlying technology as other processes, but the capabilities that they provide are very different from other features that use processes.
Reference:
<https://docs.microsoft.com/en-us/power-automate/business-process-flows-overview>

NEW QUESTION 142

- (Exam Topic 5)

A company has a website. The website includes a form that allows the company to collect information about leads. You need to set up an automated workflow to create leads in Dynamics 365 Sales when leads are created on the company's custom website. What should you create?

- A. Task Flow
- B. Power Automate flow
- C. Dynamics 365 workflow
- D. Business Process Flow

Answer: B

Explanation:

Reference:

<https://trellispoint.com/create-crm-leads-using-microsoft-flow/>

NEW QUESTION 147

- (Exam Topic 6)

You are planning to allow members of your team to test your chatbot. You must ensure this is done in a secure way. A team member named User1 must test the chatbot. You need to ensure that User1 can complete testing. What should you do?

- A. Sign in to the authoring environment as the chatbot author.
- B. Sign in to Microsoft Azure DevOps as the chatbot author.
- C. Sign in to Microsoft Azure DevOps as User1.
- D. Sign in to the authoring environment as User1.

Answer: A

NEW QUESTION 149

- (Exam Topic 6)

A company uses Dynamics 365 Supply Chain Management. When a sales order is created for one of the customers that a specific user manages, a Microsoft Outlook task must be created to remind the user to perform any follow up activities that are required. You need to implement the functionality to create Outlook tasks. Which feature should you use?

- A. Power Automate
- B. AI Builder
- C. Power BI
- D. Business Events
- E. Common Data Service

Answer: A

NEW QUESTION 151

- (Exam Topic 6)

You need to implement Microsoft Business Applications along with the Microsoft Power Platform. Which three Microsoft products are part of the Power Platform? Each correct answer presents a complete solution. NOTE: Each correct selection is worth one point.

- A. Power Apps
- B. Azure Active Directory
- C. Power Automate
- D. Azure Machine learning
- E. Power BI

Answer: ACE

NEW QUESTION 155

- (Exam Topic 6)

A company is evaluating ways to connect Power Platform apps to external services to perform complex activities. For each of the following statements, select Yes if the statement is true. Otherwise, select No. NOTE: Each correct selection is worth one point.

Answer Area

Statement	Yes	No
You can create a canvas app that scans and parses documents using Azure Cognitive Services and then adds the appropriate information to Dynamics 365 Sales.	<input type="radio"/>	<input type="radio"/>
You can create a canvas app that uses Azure Cognitive Services to read incident records and identify tickets that need to be escalated based on sentiment score.	<input type="radio"/>	<input type="radio"/>

- A. Mastered
- B. Not Mastered

Answer: A

Explanation:

Yes Yes

NEW QUESTION 160

- (Exam Topic 6)

A company uses Microsoft 365, SharePoint Online, and Dynamics 365 Sales.

You need to recommend tools to build a solution that meets the following requirements:

- Synchronize data daily (rom an external Microsoft SQL Server instance.
- Send a report automatically to specific company executives.
- Ensure that opportunities over a specified amount are approved by a sales manager.

Which two tools of components should you recommend? Each correct answer presents pan of the solution NOTE: Each correct selection is worth one point.

- A. Microsoft Word
- B. Common Data Service
- C. Power Automate
- D. Microsoft Excel
- E. Power BI

Answer: BC

NEW QUESTION 163

- (Exam Topic 6)

You are creating a Power Automate flow.

You need to retrieve data from several sources deluding Microsoft Excel, Azure Data lake, and GitHub.

What should you use? To answer, drag the appropriate components to the correct data sources. Each component may be used once, more than once, or not at all.

You may need to drag the split bar between panes or scroll to view content.

NOTE: Each correct selection Is worth one point

Components

Connector

Expression

Formula

Answer Area

Data source

Microsoft Excel

Azure Data Lake

GitHub

Component

- A. Mastered
- B. Not Mastered

Answer: A

Explanation:

Components

Connector

Expression

Formula

Answer Area

Data source

Microsoft Excel

Azure Data Lake

GitHub

Component

Formula

Connector

Expression

NEW QUESTION 165

- (Exam Topic 6)

You are creating a model-driven app. You need to add forms to the app.

Which form types should you use> To answer, select the appropriate options in the answer area.

NOTE: Each correct selection is worth one point.

Requirement

a compact form for mobile devices

Form type

Card

Quick Create

Quick View

Requirement

a basic form for data entry

Form type

Main

Quick Create

Quick View

Requirement

a compact form for use in web clients to edit records

Form type

Advanced Find Views

Associated Views

Lookup Views

Public Views

- A. Mastered
- B. Not Mastered

Answer: A

Explanation:

Requirement	Form type
a compact form for mobile devices	<div>Card</div> <div>Quick Create</div> <div>Quick View</div>
a basic form for data entry	<div>Main</div> <div>Quick Create</div> <div>Quick View</div>
a compact form for use in web clients to edit records	<div>Advanced Find Views</div> <div>Associated Views</div> <div>Lookup Views</div> <div>Public Views</div>

NEW QUESTION 169

- (Exam Topic 6)

A company plans to build solutions by using Power Platform technologies.

For each of the following statements, select Yes if the statement is true. Otherwise, select No. NOTE: Each correct selection is worth one point.

Statement	Yes	No
Power Virtual Agents chat data is saved unless it is deleted by the customer after a chat session.	<input type="radio"/>	<input type="radio"/>
Power Automate flows operate with administrative privileges at all times.	<input type="radio"/>	<input type="radio"/>

- A. Mastered
- B. Not Mastered

Answer: A

Explanation:

Statement	Yes	No
Power Virtual Agents chat data is saved unless it is deleted by the customer after a chat session.	<input checked="" type="radio"/>	<input type="radio"/>
Power Automate flows operate with administrative privileges at all times.	<input type="radio"/>	<input checked="" type="radio"/>

NEW QUESTION 173

- (Exam Topic 6)

A company plans to use Power Platform to build apps that address specific business challenges. You need to recommend the appropriate types of Power Apps to use. What should you recommend? To answer, select the appropriate options in the answer area.

NOTE: Each correct selection is worth one point

Scenario	Tool
Field technicians need a mobile app to capture the location and the image of defective products.	<div>Canvas app</div> <div>Power Apps Portals</div> <div>Common Data Service</div>
Sales representatives need to see different views and dashboards in the sales app.	<div>Canvas app</div> <div>Model-driven app</div> <div>Power Apps Portals</div>

- A. Mastered
- B. Not Mastered

Answer: A

Explanation:

Answer Area

Scenario

Field technicians need a mobile app to capture the location and the image of defective products.
Sales representatives need to see different views and dashboards in the sales app.

Tool

Canvas app
Power Apps Portals
Common Data Service

Canvas app
Model-driven app
Power Apps Portals

NEW QUESTION 175

- (Exam Topic 6)

You are a sales manager for a large retail organization.

You are creating a Power Apps app that will display customer product purchase information from your old point-of-sale (POS) system and need to link those sales to the customer accounts and product sales in Dynamics 365 Commerce.

You need to use the appropriate component. What should you use?

- A. business process flow
- B. business rule
- C. Common Data Service
- D. entity metadata

Answer: C

NEW QUESTION 176

- (Exam Topic 6)

A company is creating a canvas app to track and analyze customer visits to their retail stores. Data about customer visits is stored on-premises at each retail store location. The app must display data about customer visits when users launch the app. You need to ensure that the data is available for consumption by the app.

Which tool should you use?

- A. Data gateway
- B. Data source
- C. Connector
- D. Microsoft Dataverse
- E. Power Automate

Answer: A

NEW QUESTION 180

- (Exam Topic 6)

A company plans to use Power Automate to automate tasks.

Match each flow type to its description to answer, drag the appropriate flow type from the column on the left to its description on the right. Each option may be used once, more than once, or not at all.

NOTE: Each correct match is worth one point.

Flow types

automated
business process
scheduled
instant

Answer Area

Description

a flow that runs after it is triggered by an event
a flow that guides a user through a set of tasks
a flow that runs after a specified number of days
a flow that allows you to start tasks on demand

Flow type

Flow type
Flow type
Flow type
Flow type

- A. Mastered
- B. Not Mastered

Answer: A

Explanation:

Flow types

automated
business process
scheduled
instant

Answer Area

Description

a flow that runs after it is triggered by an event
a flow that guides a user through a set of tasks
a flow that runs after a specified number of days
a flow that allows you to start tasks on demand

Flow type

automated
business process
scheduled
instant

NEW QUESTION 185

- (Exam Topic 6)

A company wants users to start using Power Automate to improve personal productivity. You need to create a flow.

Which two elements must you include? Each correct answer presents part of the solution. NOTE: Each correct selection is worth one point.

- A. condition
- B. expression
- C. trigger

D. action

Answer: CD

Explanation:

Reference:

<https://docs.microsoft.com/en-us/power-automate/get-started-logic-flow>

NEW QUESTION 187

- (Exam Topic 6)

A medical office has a model -driven app that uses Common Data Service.

You plan to create a screen that allows users to capture information about doctors. The screen must provide users the ability to enter or select the following information;

- > a place to enter doctor- profile data that is not pan of the account table or the contact table.
- > a place to enter the doctor's specialty in the profile form.
- > a column for insurance with the ability to pick one of 10 different insurance companies. You need to store the captured data in Common Data Service.

What should you use to store the data? To answer, drag the appropriate components to the correct requirements. Each component may be used once, more than once, or not at all You may need to drag the split bar between panes or scroll to view content.

NOTE: Each correct selection is worth one point.

Options

Entity

Field

Option set

Record

Answer Area

Requirement	Option
Store additional doctor profile data.	<div>Option</div>
Store information about the doctor's specialty.	<div>Option</div>
Select an insurance company.	<div>Option</div>

- A. Mastered
B. Not Mastered

Answer: A

Explanation:

Options

Entity

Field

Option set

Record

Answer Area

Requirement	Option
Store additional doctor profile data.	<div>Record</div>
Store information about the doctor's specialty.	<div>Entity</div>
Select an insurance company.	<div>Option set</div>

NEW QUESTION 190

- (Exam Topic 6)

For each of the following statements, select Yes if the statement is true, Otherwise, select No. NOTE: Each correct selection is worth one point.

Answer Area

Statement	Yes	No
Power Apps apps can run only on mobile devices.	<div></div>	<div></div>
Power Apps can run only with Dynamic 365 products.	<div></div>	<div></div>
If a user runs a Power Apps app that accesses information to which the user does not have access, the app grants the user permissions.	<div></div>	<div></div>

- A. Mastered
B. Not Mastered

Answer: A

Explanation:

Answer Area

Statement	Yes	No
Power Apps apps can run only on mobile devices.	<div></div>	<div><div></div></div>
Power Apps can run only with Dynamic 365 products.	<div></div>	<div><div></div></div>
If a user runs a Power Apps app that accesses information to which the user does not have access, the app grants the user permissions.	<div><div></div></div>	<div></div>

NEW QUESTION 193

- (Exam Topic 6) You create a model-driven app. The app is ready to be shared. You need to complete the process required to set the app up to be shared. How should you complete the process for setting up the app to be shared? To answer, drag the appropriate setting to the correct drop targets. Each source may be used once, more than once, or not at all. You may need to drag the split bar between panes or scroll to view content. NOTE: Each correct selection is worth one point.

Processes

Select an app from the Power Apps

Select the app and select a security

Select a user and choose a security

Select Share:

Answer Area

Step

Process

1

Process

2

Process

3

Process

4

Process

- A. Mastered
- B. Not Mastered

Answer: A

Explanation:
Reference:
<https://docs.microsoft.com/en-us/powerapps/maker/model-driven-apps/share-model-driven-app>

NEW QUESTION 196

- (Exam Topic 6)
You are authoring a Power Virtual Agents chatbot for a company for each of the following statements, select Yes if the statement is true. Otherwise, select No. NOTE: Each correct selection is worth one point.

Statement	Yes	No
When escalating to a live person from a chatbot, the customer must restate their issue and other information collected.	<input type="radio"/>	<input type="radio"/>
You can customize the greeting topic for every chatbot that you author.	<input type="radio"/>	<input type="radio"/>

- A. Mastered
- B. Not Mastered

Answer: A

Explanation:

Statement	Yes	No
When escalating to a live person from a chatbot, the customer must restate their issue and other information collected.	<input checked="" type="radio"/>	<input type="radio"/>
You can customize the greeting topic for every chatbot that you author.	<input checked="" type="radio"/>	<input type="radio"/>

NEW QUESTION 200

- (Exam Topic 6)
Match each tool to its task. To answer, drag the appropriate tool from the column on the left to its task on the right. Each tool may be used once, more than once, or not at all. NOTE: Each correct match is worth one point.

Tools

Power BI

Power Automate

Power Apps

Answer Area

Task

Automate workflows.

Trigger an action from an event.

Create a custom mobile data entry screen.

Tool

- A. Mastered
- B. Not Mastered

Answer: A

Explanation:

Tools

Power BI

Power Automate

Power Apps

Answer Area

Task

Automate workflows.
Trigger an action from an event.
Create a custom mobile data entry screen.

Tool

Power Automate

Power BI

Power Apps

NEW QUESTION 204

- (Exam Topic 6)

A company is creating a canvas app to manage weekly status reports from users about projects. Status reports must be created weekly. Users can enter project tasks with descriptions. Users can also add escalation requests for tasks that are late or at risk. When a status report is submitted with an escalation request the app must automatically send a text message to the submitter's manager. A reminder must be sent at 8 PM on Sunday to everyone who has not yet submitted a status report for the previous week. You need to identify the appropriate components to use in the solution. What should you use? To answer, drag the appropriate implementation mechanisms to the correct requirements. Each implementation mechanism may be used once, more than once, or not at all. You may need to drag the split bar between panes or scroll to view content
NOTE: Each correct selection is worth one point

Implementation Mechanisms

Actions

Triggers

Conditions

Business process flows

Answer Area

Action

Automatically send a text message based on the report submission.
Automatically send a reminder at 8 PM based on a missing status report.

Implementation Mechanism

- A. Mastered
- B. Not Mastered

Answer: A

Explanation:

Implementation Mechanisms

Actions

Triggers

Conditions

Business process flows

Answer Area

Action

Automatically send a text message based on the report submission.
Automatically send a reminder at 8 PM based on a missing status report.

Implementation Mechanism

Triggers

Actions

NEW QUESTION 205

- (Exam Topic 6)

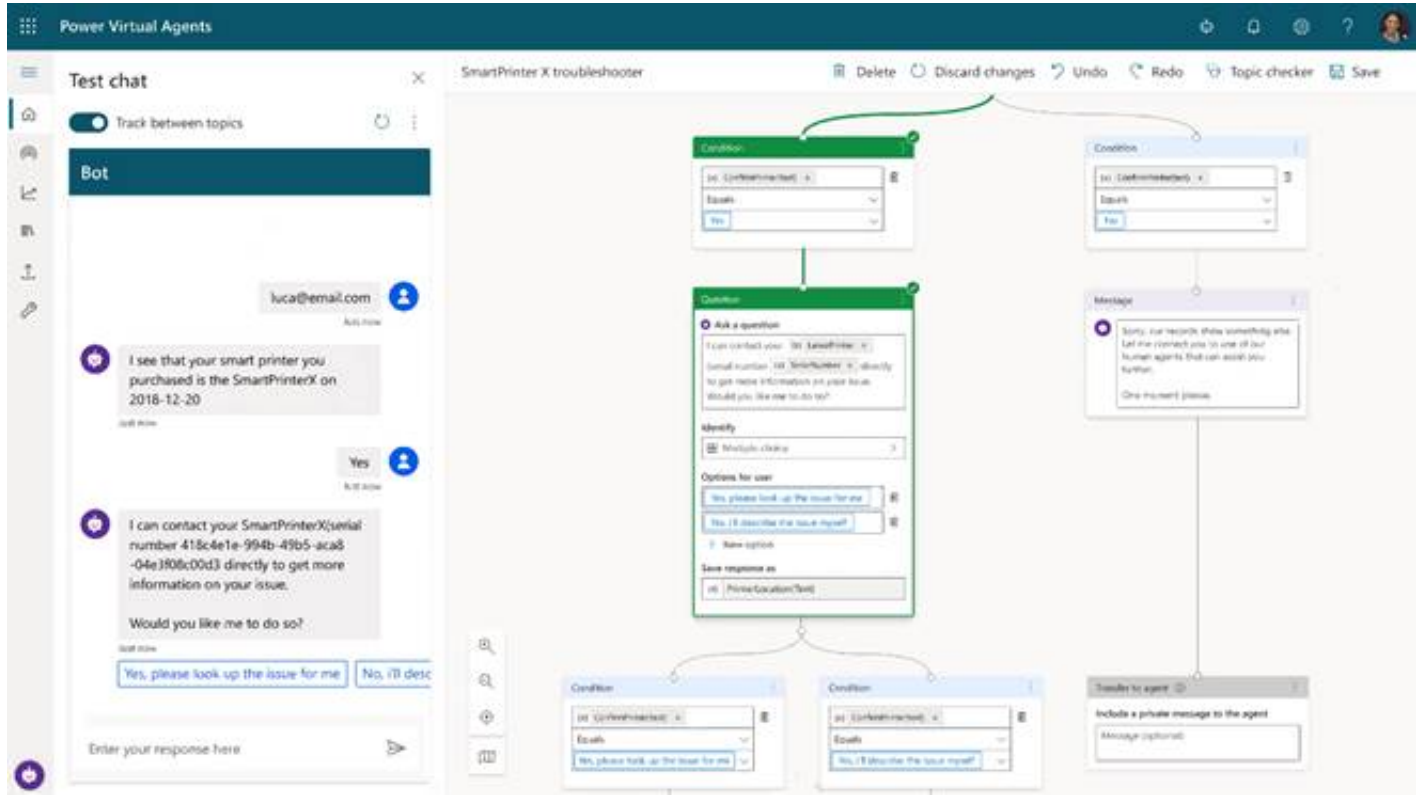
A company is creating a chatbot to replace a frequently asked questions (FAQ) site. You must perform step-by-step testing for all scenarios that are part of a complex user interaction that includes multiple topics. Testers must be able to see the workflow while interacting with the chatbot. You need to test the chatbot. What should you do?

- A. Publish the chatbot and test it in the demo website.
- B. Use the chatbot designer to test the chatbot
- C. View analytics for a chatbot conversation.
- D. Publish the chatbot and test it in any channel

Answer: B

Explanation:

Test and maintain chatbots through an incredibly easy-to-use graphical interface. Recognize and act on dozens of common entities in the user's conversation such as colors, currencies, ages, dates and times, or create your own, and store user information in variables and use them to branch or create complex conversations.
<https://powervirtualagentsblogcdn.azureedge.net/wp-content/uploads/2019/11/Tracking.png>



NEW QUESTION 210

- (Exam Topic 6)

You plan to use Power Automate to monitor what people are saying about your company's products. You store the feedback for research and development purposes.

You need to recommend Power Automate components to use for the solution.

To answer drag the appropriate components to the correct requirements. Each component may be used once, more than once, or not at all. You may need to drag the split Car between panes or scroll to view content.

NOTE: Each correct selection is worth one point

Components

action

expression

service

trigger

Answer Area

Requirement

Retrieve the top five posts from your company's Facebook page.
Enter the resulting posts into the product database.
Combine author and link fields into a single field.
Run a flow every hour.

Component

Component

Component

Component

Component

- A. Mastered
- B. Not Mastered

Answer: A

Explanation:

Components

action

expression

service

trigger

Answer Area

Requirement

Retrieve the top five posts from your company's Facebook page.
Enter the resulting posts into the product database.
Combine author and link fields into a single field.
Run a flow every hour.

Component

action

action

expression

trigger

NEW QUESTION 213

.....

Relate Links

100% Pass Your PL-900 Exam with ExamBible Prep Materials

<https://www.exambible.com/PL-900-exam/>

Contact us

We are proud of our high-quality customer service, which serves you around the clock 24/7.

Viste - <https://www.exambible.com/>