

Cisco

Exam Questions 350-601

Implementing and Operating Cisco Data Center Core Technologies



NEW QUESTION 1

A customer wants to offload some of its order processing to a public cloud environment. The customer environment is based on Cisco ACI and uses Puppet with containerized applications. The operations team requires a solution to orchestrate and optimize the cost of the new solution. Which product must be used to meet these requirements?

- A. Cisco Intersight
- B. Cisco Workload Optimization Manager
- C. Cisco CloudCenter
- D. Cisco Data Center Network Manager

Answer: C

Explanation:

<https://www.cisco.com/c/dam/en/us/products/collateral/cloud-systems-management/cloudcenter/white-paper-c1>

- Enforce multicloud governance by guiding user decisions to reduce risk
- Securely automate deployment to reduce manual effort and get consistent results
- Increase feature velocity via integration with developer tools to accelerate time to market (CI/CD = Puppet, Chef, and Ansible).
- Optimize cloud consumption to cut pay-per-use cloud costs

<https://www.cisco.com/c/en/us/products/collateral/cloud-systems-management/cloudcenter-suite/datasheet-c78>

NEW QUESTION 2

An engineer must configure HSRP protocol on two Cisco Nexus 9000 Series Switches running a virtual port channel. In addition, the HSRP implementation must meet these requirements:

- > It must allow more than 500 groups.
- > switch 1 must act as the primary switch.
- > Both switches must use a user-defined hardware address.

Drag and drop the commands from the right to complete a configuration of the HSRP on the left. The commands are used more than once. Not all commands are used.

```
! switch1

interface vlan300
ip 209.165.200.226/27
hsrp 300

[ ]

[ ]

ip 209.165.200.225

[ ]

! switch2

interface vlan300
ip 209.165.200.227/27
hsrp 300

[ ]

[ ]

ip 209.165.200.225

[ ]
```

mac-address 6000.6000.6000

hsrp version 1

priority 255

hsrp use-bia

priority 100

hsrp version 2

- A. Mastered
- B. Not Mastered

Answer: A

Explanation:

Switch 1:

Box 1 = hsrp version 2

Box 2 = priority 100

Box 3 = mac-address 6000.6000.6000

Switch 2:

Box 1 = hsrp version 2

Box 2 = priority 255

Box 3 = mac-address 6000.6000.6000

NEW QUESTION 3

An engineer must configure a Cisco UCS domain for monitoring and management by the Cisco Intersight SaaS platform. After the setup is complete, administrators must have full control to configure the device through Cisco UCS Manager and Intersight. Which set of actions accomplishes this task?

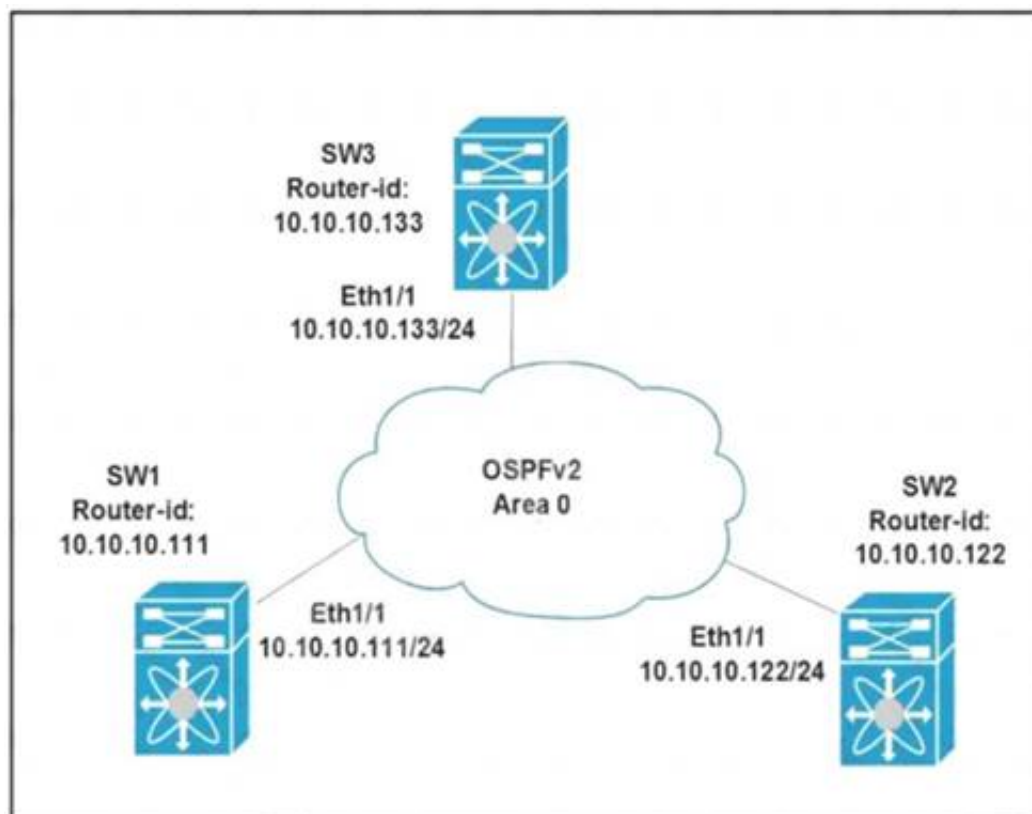
- A. Configure Device Connector Access Mode as Allow Control in Device Console Claim the device on Intersight as UCSM Managed Mode.
- B. Configure Device Connector Access Mode as Allow Control in Cisco UCS Manager Claim the device on intersightc as Intersight Managed Mode
- C. Configure Device Connector Access Moao as Allow Control in Device Consol
- D. Claim the device on intersight as Intersight Managed Mode
- E. Configure Device Connector Access Mode as Allow Control in Cisco UCS Manager Claim the device on intersight as UCSM Managed Mode

- F. Option A
- G. Option B
- H. Option C
- I. Option D

Answer: C

NEW QUESTION 4

Refer to the exhibit.



All switches are configured with the default OSPF priority. Which configuration should be applied to ensure that the SW2 Cisco Nexus switch controls the LSA floods and advertises the network to the remaining nodes in the OSPFv2 area?

- A. SW2# configure terminal SW2 (config)# interface ethernet 1/1 SW2 (config-if)# ip ospf priority 255
- B. SW2# configure terminal SW2 (config)# interface ethernet 1/1 SW2 (config-if)# ip ospf priority 1
- C. SW2# configure terminal SW2 (config)# router ospf 1 SW2 (config-router)# router-id 10.10.10.22
- D. SW2# configure terminal SW2 (config)# interface ethernet 1/1 SW2 (config-if)# ip ospf priority 0

Answer: A

Explanation:

Priority in OSPF is mainly used to influence/determine a designated router/backup designated router for a network. By default, the priority is 1 on all routers. A router with a high priority will always win the DR/BDR election process.

NEW QUESTION 5

A server engineer wants to control power uses on a Cisco UCS C-series rack server down to the component level. Which two components support specific power limits? (Choose two.)

- A. memory
- B. graphic card
- C. processor
- D. network controller
- E. storage controller

Answer: AC

NEW QUESTION 6

Which two methods are available to Manage an ACI REST API session authentication when a user is unauthenticated?

- A. POST to aaaLogin
- B. POST to aaaUserLogin
- C. GET aaaRefresh
- D. GET to aaaListDomains
- E. DELETE to aaaLogout

Answer: AC

Explanation:

These API methods enable you to manage session authentication:

aaaLogin —Sent as a POST message, this method logs in a user and opens a session. The message body contains an aaa:User object with the name and password attributes, and the response contains a session token and cookie. If multiple AAA login domains are configured, you must prepend the user's name with apic: domain\\ .

aaaRefresh —Sent as a GET message with no message body or as a POST message with the aaaLogin message body, this method resets the session timer. The response contains a new session token and cookie.

aaaLogout —Sent as a POST message, this method logs out the user and closes the session. The message body contains an aaa:User object with the name attribute. The response contains an empty data structure.

aaaListDomains —Sent as a GET message, this method returns a list of valid AAA login domains. You can send this message without logging in.

https://www.cisco.com/c/en/us/td/docs/switches/datacenter/aci/apic/sw/2-x/rest_cfg/2_1_x/b_Cisco_APIC_REST_API_Configuration_Guide/b_Cisco_APIC_REST_API_Configuration_Guide_chapter_01.html

NEW QUESTION 7

Where does the witness VM reside in a Cisco Hyperflex Edge deployment?

- A. Windows application
- B. Hyper Rex Data Platform
- C. Cisco Intersight
- D. local HyperFlex datastore

Answer: C

NEW QUESTION 8

A storage administrator notices an increasing number of storage targets that unexpectedly reach capacity, causing periodic service interruptions The administrator must now create and submit a daily report of the environment that shows the status of the storage targets with the highest capacities Which solution provides this information?

- A. Nagios Core with OpManager
- B. Cisco DCNM with SAN Insight
- C. SolarWinds with Slow Drain Analysis
- D. Cisco Intersight with Slow Drain Analysis

Answer: D

NEW QUESTION 9

A network engineer is deploying a cisco ALL-flash hyperflex solution. Which local storage configuration is required for the operating system and persistent logging?

- A. Two solid state drives
- B. Two SATA drives
- C. One SATA drive
- D. One solid state drive

Answer: D

NEW QUESTION 10

What is required for using puppet in a Cisco NX-OS environment?

- A. Open Agent Container
- B. XML management interface
- C. NX-API
- D. OpenNP

Answer: A

NEW QUESTION 10

Which two authentication types does Cisco UCS Manager support when configuration authentication? (Choose two.)

- A. local
- B. LDAP
- C. 802.1X
- D. Kerberos
- E. PAM

Answer: AB

Explanation:

https://www.cisco.com/c/en/us/td/docs/unified_computing/ucs/ucs-manager/GUI-User-Guides/Admin-Management/3-2/b_Cisco_UCS_Admin_Mgmt_Guide_3_2/b_Cisco_UCS_Admin_Mgmt_Guide_3_2_chapter_0101.html

NEW QUESTION 12

A network administrator attempts to automate the provisioning of several new Cisco Nexus switches. The administrator prepares a bootstrap configuration script for the task Due to the number of switches a zero-touch provisioning solution is preferred Additionally, some switches arrive with outdated software and should be automatically upgraded as part of the provisioning workflow Which solution meets the requirements'

- A. DHCP
- B. Ansible
- C. NX-API
- D. POAP

Answer: C

NEW QUESTION 16

Which data structure results from running this Python code?

```
>>> import json
>>> f = open('fname.json', 'r')
>>> var1 = json.load(f)
>>> var1
{'u'bd': u'bd1', u'ap': {u'epgs': [{u'name': u'app'}, {u'name': u'web'}, {u'name': u'db'}], u'name': u'OnlineStore'}, u'name': u'39233259', u'pvn': u'pvn1'}
```

- A. tuple
- B. dictionary
- C. set
- D. list

Answer: B

NEW QUESTION 20

A server engineer wants to control power usage on a Cisco UCS C-Series rack server down to the component level. Which two components support specific power limits? (Choose two.)

- A. storage controller
- B. network controller
- C. processor
- D. graphic card
- E. memory

Answer: CE

Explanation:

https://www.cisco.com/c/en/us/td/docs/unified_computing/ucs/c/sw/gui/config/guide/4_1/b_Cisco_UCS_C-serie

NEW QUESTION 21

An engineer is configuring AAA authentication on an MDS 9000 switch. The LDAP server is located under the IP 10.10.2.2. The data sent to the LDAP server should be encrypted. Which command should be used to meet these requirements?

- A. ldap-server host 10.10.2.2 enable-ssl
- B. ldap-server 10.10.2.2 port 443
- C. ldap server host 10.10.2.2 key SSL_KEY
- D. ldap-server 10.10.2.2 key SSL_KEY

Answer: A

NEW QUESTION 23

Port security is statically configured on a Cisco Nexus 7700 Series switch and F3 line card. The switch is configured with an Advanced Services license. Which two actions delete secured MAC addresses from the interface? (Choose Two)

- A. The address must be removed from the configuration.
- B. The address must reach the age limit that is configured for the interface.
- C. The interface must be converted to a routed port.
- D. The device must be restarted manually.
- E. Shutdown and then no shutdown must be run on the interface.

Answer: AC

Explanation:

https://www.cisco.com/c/en/us/td/docs/switches/datacenter/sw/6_x/nx-os/security/configuration/guide/b_Cisco_Static Method

The static learning method allows you to manually add or remove secure MAC addresses to the running configuration of an interface. If you copy the running configuration to the startup configuration, static secure MAC addresses are unaffected if the device restarts.

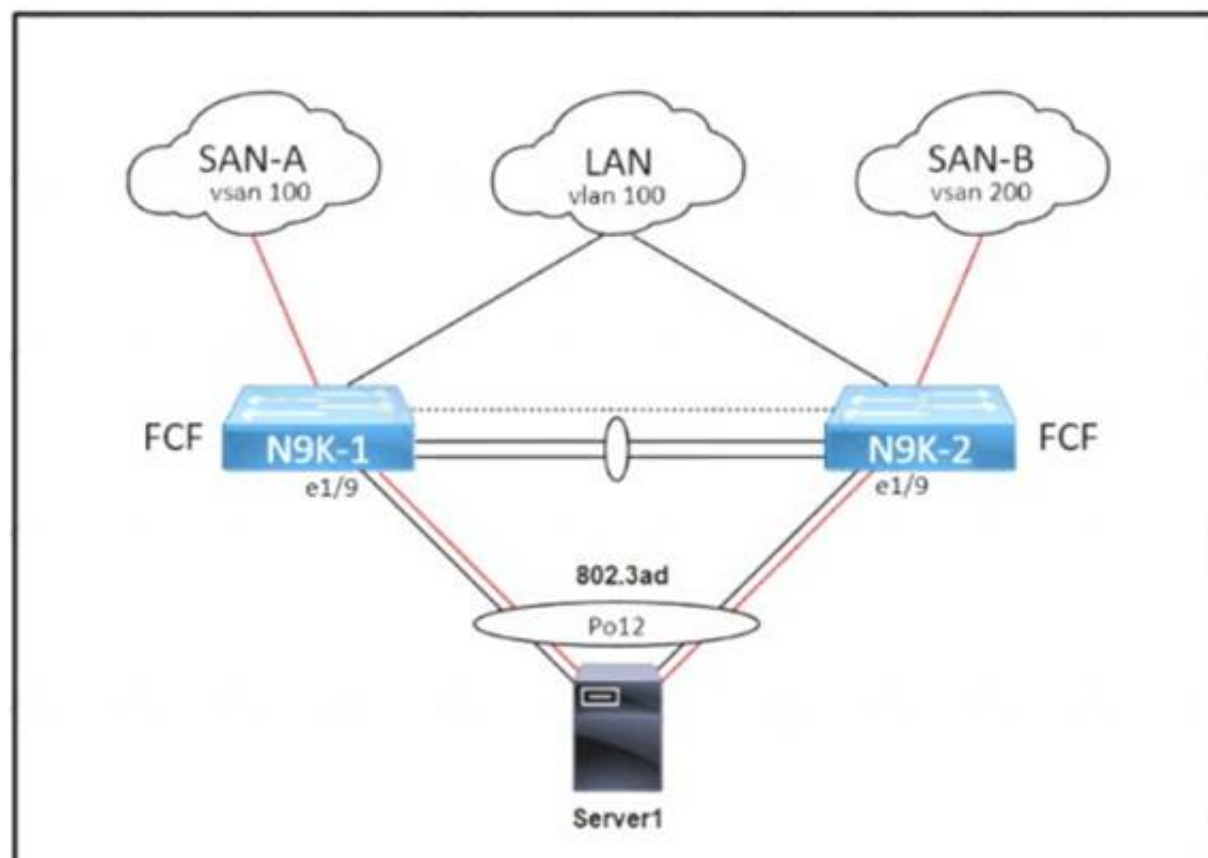
A static secure MAC address entry remains in the configuration of an interface until one of the following events occurs:

- You explicitly remove the address from the configuration.
- You configure the interface to act as a Layer 3 interface.

Adding secure addresses by the static method is not affected by whether dynamic or sticky address learning is enabled.

NEW QUESTION 24

Refer to the exhibit.



An administrator must complete the unified fabric configuration between Server1 and a pair of Cisco Nexus 9000 Series Switches Drag and drop the code snippets from the right onto the blanks in the code on the left to complete the N9K-1 configuration Snippets are used more than once.

```

service-policy type qos input default-fcoe-in-policy
int [ ]
  switchport trunk allowed [ ] 1, 100
int [ ]
  bind interface [ ]
  no shut

```

vlan

vfc 1

po12

- A. Mastered
- B. Not Mastered

Answer: A

Explanation:

Po12
Vlan Vfc1 Po12

NEW QUESTION 29

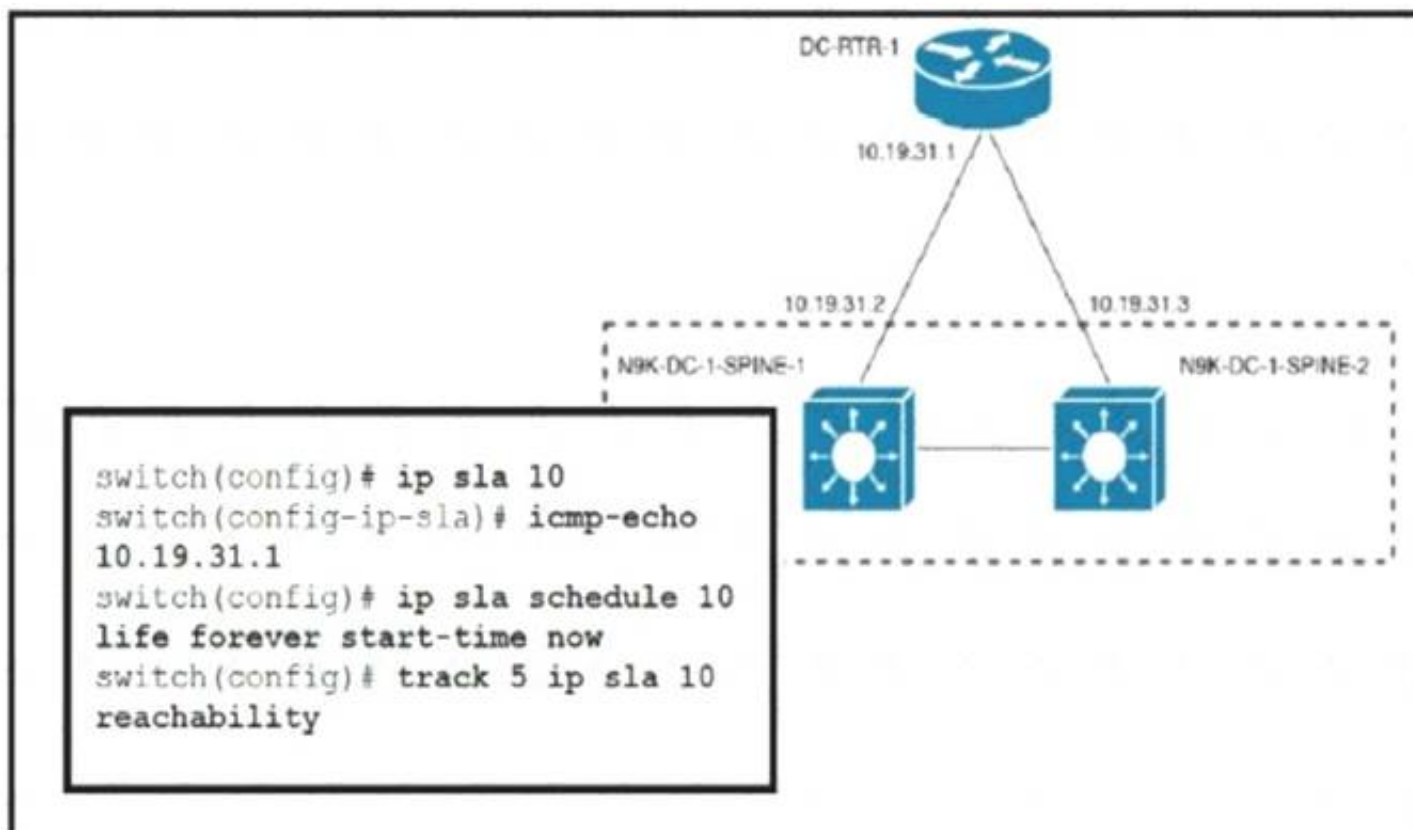
An engineer is implementing the Cisco ACI fabric and wants to reduce the amount of TCAM resources consumed by the fabric The engineer also needs to ensure that all EPGs m a VRF consume the same services Which action should be taken to meet these requirements?

- A. Configure a single contract provided and consumed in all EPGs
- B. Configure preferred groups in the VRF for al EPGs
- C. Implement an unenforced VRF
- D. Implement vzAny feature

Answer: A

NEW QUESTION 32

Refer to the exhibit.



An engineer must invoke a Python script that alerts the operations team when the router DC-RTR-1 becomes unreachable. Which configuration set accomplishes this task?

- ☒ track 3 ip sla 10 reachability
 event name GATEWAY-DOWN
 event state down
 action cli command routerdown.py
- ☐ scheduler job name ROUTER-DOWN
 job track 9 state down
 action 1.0 cli source routerdown.py
 schedule 10
- ☐ event scheduler name DOWN-ROUTER
 event track 2 state 1 not up
 event action 1.0 command source routerdown.py
 event start 0:00 repeat 0:05
- ☐ event manager applet ROUTER-DOWN-SLA
 event track 5 state down
 action 1.0 event-default
 action 2.0 cli command source routerdown.py

- A. Option A
- B. Option B
- C. Option C
- D. Option D

Answer: D

NEW QUESTION 33

An engineer must configure a VXLAN routing on a cisco Nexus 9000 series Switch. The engineer requires a solution where all the leaf switches have the same gateway MAC and IP address. Which configuration set accomplishes this task?

- A)
 NX9K(config)# fabric forwarding anycast-gateway-mac AA:BB:AA:BB:AA:BB
 NX9K(config)# interface VLAN-interface-name NX9K(config-if)# fabric forwarding mode anycast-gateway
- B)
 NX9K(config)# fabric forwarding anycast-gateway-mac AA:BB:AA:BB:AA:BB
 NX9K(config)# interface VLAN-interface-name
 NX9K(config-if)# vrf member vrf-name
 NX9K(config-if)# fabric forwarding mode anycast-gateway
- C)
 NX9K(config)# install feature-set fabric
 NX9K(config)# feature-set fabric
 NX9K(config)# fabric forwarding anycast-gateway-mac AA:BB:AA:BB:AA:BB
 NX9K(config)# interface VLAN-interface-name
 NX9K(config-if)# vrf member vrf-name
 NX9K(config-if)# fabric forwarding mode anycast-gateway
- D)

```
NX9K(config)# install feature-set fabric
NX9K(config)# feature-set fabric
NX9K(config)# fabric forwarding anycast-gateway-mac AA:BB:AA:BB:AA:BB
NX9K(config)# interface VLAN-interface-name
NX9K(config-if)# fabric forwarding mode anycast-gateway
```

- A. Option A
- B. Option B
- C. Option C
- D. Option D

Answer: C

NEW QUESTION 38

In an FCoE environment, for which two sets of data must an interface that implements the PAUSE mechanism always provision sufficient ingress buffer? (Choose two)

- A. frames that were sent with high credit
- B. frames that were processed and transmitted by the transmitter before the PAUSE frame left the sender
- C. frames that were sent on the link but not yet received.
- D. frames that were sent on the link and received.
- E. frames that were processed and transmitted by the transmitter after the PAUSE frame left the sender.

Answer: BC

Explanation:

https://www.cisco.com/c/en/us/td/docs/switches/datacenter/nexus7000/sw/fcoe/config/cisco_nexus7000_fcoe_config_guide_8x/configuring_fcoe.html

NEW QUESTION 42

Drag and drop the NAS and NFS concepts from the left onto the definitions on the right.

Data storage and file sharing requests are sent and received.	NFS <div></div> <div></div>
The protocol is regularly used on Linux and UNIX systems.	
Software is deployed on a lightweight OS that is embedded in the hardware.	NAS <div></div> <div></div>
The vendor-agnostic protocol is supported on any hardware and OS.	

- A. Mastered
- B. Not Mastered

Answer: A

Explanation:

NFS

Data storage and file sharing requests are sent and received The protocol is regularly used on Linux segment

NAS

Software is deployed on a lightweight OS that is embedded in the hardware The vendor-agnostic protocol is supported on any hardware and OS

NEW QUESTION 45

A network engineer must enable port security on all cisco MDS series switches in the fabric. The requirement is to avoid the extensive manual configuration of the switch ports. Which action must be taken to meet these requirements?

- A. Activate CFS distribution and the auto-learning port security feature.
- B. Activate CFS distribution and file auto-learning port security feature on a per-VSAN basis.
- C. Enable the auto-learning port security feature on a per-VSAN basis.
- D. Enable the auto-learning port security feature.

Answer: B

Explanation:

You can instruct the switch to automatically learn (auto-learn) the port security configurations over a specified period. This feature allows any switch in the Cisco MDS 9000 Family to automatically learn about devices and switches that connect to it. Use this feature when you activate the port security feature for the first time as it saves tedious manual configuration for each port. You must configure auto-learning on a per-VSAN basis.

https://www.cisco.com/en/US/docs/storage/san_switches/mds9000/sw/rel_3_x/configuration/guides/fm_3_3_1/p

NEW QUESTION 49

Multiple roles are applied to a user on the Cisco MDS 9000 Series Switch. Which statement is true?

- A. Any commands that have conflicting settings between roles are denied.
- B. Access to a command takes priority over being denied access to a command.
- C. The first role assigned takes precedence over subsequent roles.
- D. The last role assigned takes precedence over previous roles.

Answer: B

Explanation:

Graphical user interface, text, application Description automatically generated



Note If you belong to **multiple roles**, you can execute a union of all the commands permitted by these roles. Access to a command takes priority over being **denied access** to a command. For example, suppose you belong to a TechDocs group and you were denied access to configuration commands. However, you also belong to the engineering group and have access to configuration commands. In this case, you will have access to configuration commands.

https://www.cisco.com/c/en/us/td/docs/switches/datacenter/mds9000/sw/5_0/configuration/guides/sec/nxos/sec/clicfgur.html

https://www.cisco.com/c/en/us/td/docs/switches/datacenter/mds9000/sw/8_x/config/security/cisco_mds9000_security_config_guide_8x/configuring_users_and_common_roles.html

NEW QUESTION 52

Which configuration statically assigns VSAN membership to a virtual Fibre Channel interface?

- A. switch(config-vsan-cb)># vsan 100 bind interface fc 3/1
- B. switch<config-vsan-db)# vsan 100 bind interface vfc 31
- C. switch(config-vsan-db># vsan 100 fc 3/1
- D. switch(config-vsan-db)# vsan 100 interface vfc 31

Answer: D

Explanation:

<https://www.cisco.com/c/en/us/td/docs/switches/datacenter/nexus5000/sw/configuration/guide/cli/CLIConfigurationGuide/vsan.html>

NEW QUESTION 54

What occurs when running the command install deactivate <filename> while a software maintenance upgrade is performed on a Cisco Nexus 9000 Series switch?

- A. The current set of packages is committed.
- B. The package is removed from the switch.
- C. The package features for the line card are disabled.
- D. The current upgrade stops.

Answer: C

NEW QUESTION 56

Drag and drop the network assurance concepts from the left onto the corresponding benefits on the right.

Cisco Tetration	allows close to real-time data monitoring
Data Management Engine	confirms that the network operates consistently with business requirements
Cisco Network Assurance Engine	offers overall protection and enables analysis of the network in real time to identify security incidents faster
Streaming Telemetry	allows the characteristics to be presented as object properties

- A. Mastered
- B. Not Mastered

Answer: A

Explanation:

Diagram Description automatically generated

NEW QUESTION 59

An engineer is duplicating an existing Cisco UCS setup at a new site. What are two characteristics of a logical configuration backup of a Cisco UCS Manager database? (Choose two.)

- A. contains the AAA and RBAC configurations
- B. contains a file with an extension.tgz that stores all of the configurations
- C. contains the configuration organizations and locales
- D. contains all of the configurations
- E. contains the VLAN and VSAN configurations

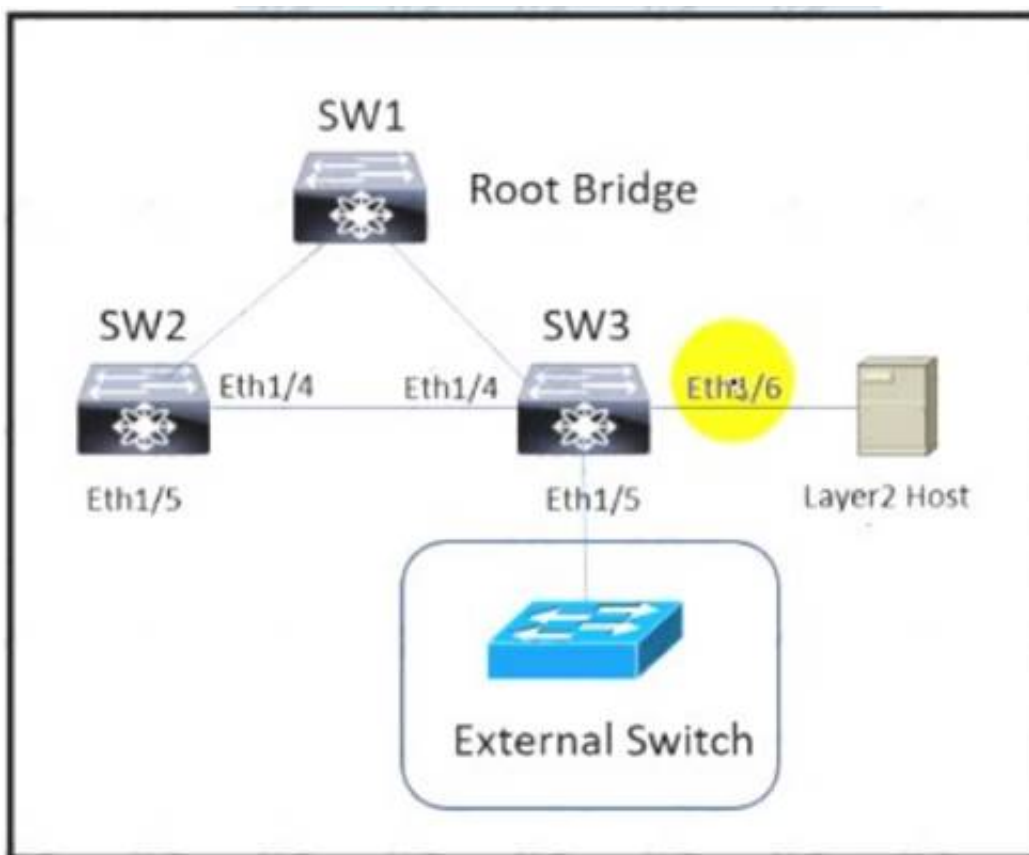
Answer: CE

Explanation:

Logical configuration—An XML file that includes all logical configuration settings such as service profiles, VLANs, VSANs, pools, and policies. You can use the file generated from this backup to import these configuration settings to the original fabric interconnect or to a different fabric interconnect. You cannot use this file for a system restore.

NEW QUESTION 64

Refer to the exhibit.



The Cisco Nexus Series Switches SW1, SW2, and SW3 are connected via Layer 2 copper interfaces. An engineer implements loop prevention standard IEEE 802.1w on each VLAN to provide faster recovery from network changes or failures. The implementation has these requirements

- Interfaces that are connected to Layer 2 hosts must not receive STP BPDUs.
- The implementation must detect unidirectional links due to one-way traffic twisted-pair links
- Bridge assurance must be enabled between SW2 and SW3
- The Layer 2 domain must be protected from superior BPDUs that arrive from external switches.

Drag and drop the code snippets from the right onto the blanks in the code on the left to complete the configuration for SW3. Not all code snippets are used.

```

1 SW3 configuration
interface ethernet 1/4
  spanning-tree port type 
  udid 
interface ethernet 1/5
  spanning-tree guard 
interface ethernet 1/6
  spanning-tree port type 
  
```

- edge
- aggressive
- normal
- network
- root
- bpdn

- A. Mastered
- B. Not Mastered

Answer: A

Explanation:

Network Aggressive Bpdu
 edge

NEW QUESTION 66

Refer to the exhibit.

```
Nexus# show vpc peer-keepalive | i Keepalive
--Keepalive interval : 1000 msec
--Keepalive timeout : 5 seconds
--Keepalive hold timeout : 3 seconds
--Keepalive vrf : management
--Keepalive udp port : 3200
--Keepalive tos : 192

Nexus# ethanalyzer local interface mgmt limit-captured-frames 1000

Capturing on mgmt0
2019-06-15 12:01:51.242597 192.168.254.11 -> 192.168.254.3 ICMP Echo (ping) request
2019-06-15 12:01:51.242860 192.168.254.3 -> 192.168.254.11 ICMP Echo (ping) reply
2019-06-15 11:50:15.975474 192.168.254.1 -> 192.168.254.3 TCP 47540 > bootps [SYN] Seq=0 Win=1024 Len=0 MSS=1460
2019-06-15 11:50:15.975547 192.168.254.3 -> 192.168.254.1 TCP 29 > 47540 [RST, A CK] Seq=1 Ack=1 Win=0 Len=0
2019-06-15 11:50:15.975564 192.168.254.1 -> 192.168.254.3 TCP 47540 > 44 [SYN] Seq=0 Win=1024 Len=0 MSS=1460
2019-06-15 11:50:15.975924 192.168.254.1 -> 192.168.254.3 TCP 47540 > discard [SYN] Seq=0 Win=1024 Len=0 MSS=1460
2019-06-15 11:50:15.976027 192.168.254.1 -> 192.168.254.3 TCP 47540 > 97 [SYN] Seq=0 Win=1024 Len=0 MSS=1460
2019-06-15 11:50:15.976381 192.168.254.1 -> 192.168.254.3 TCP 47540 > 35 [SYN] Seq=0 Win=1024 Len=0 MSS=1460
2019-06-15 11:50:16.661845 192.168.254.3 -> 192.168.254.4 UDP Source port: 3200 Destination port: 3200
2019-06-15 11:50:16.761147 00:8e:73:a2:41:13 -> 01:80:c2:00:00:00 STP Conf. Root = 8192/10/ec:e1:a9:df:6c:80 Cost = 22 Port = 0x8013
2019-06-15 11:50:16.853248 192.168.254.4 -> 192.168.254.3 UDP Source port: 3200 Destination port: 3200
2019-06-15 11:50:17.326253 192.168.254.1 -> 192.168.254.3 SSH Encrypted request packet len=52
2019-06-15 11:50:17.327313 192.168.254.3 -> 192.168.254.1 SSH Encrypted response packet len=1348
2019-06-15 11:50:17.377246 192.168.254.4 -> 239.255.70.83 UDP Source port: 7546 Destination port: 7546
2019-06-15 11:50:17.552215 192.168.254.1 -> 192.168.254.3 TCP 14139 > ssh [ACK] Seq=365 Ack=11277 Win=63546 Len=0
2019-06-15 11:50:17.661764 192.168.254.3 -> 192.168.254.4 UDP Source port: 3200 Destination port: 3200
2019-06-15 11:50:17.653242 192.168.254.4 -> 192.168.254.3 UDP Source port: 3200 Destination port: 3200
2019-06-15 11:50:17.872637 8c:60:4f:aa:c2:e1 -> 01:80:e7:00:00:0e LLDP Chassis : d = 8c:60:41:aa:c2:e1 Port Id = mgmt0 TTL = 120
2019-06-15 11:50:08.173056 192.168.256.3 -> 192.168.254.2 NTP NTP client
2019-06-15 11:50:08.173256 192.168.256.2 -> 192.168.254.3 NTP NTP server
```

A flapping link issue has been reported on the vPC keepalive link. A packet capture has been activated on the Cisco Nexus switch. What is the destination IP address of the vPC keepalive packets that are sent by the switch?

- A. 192.168.254.4
- B. 239.255.70.83
- C. 192.168.254.1
- D. 192.168.254.2

Answer: A

Explanation:

<https://www.cisco.com/c/en/us/td/docs/switches/datacenter/nexus3000/sw/interfaces/92x/b-cisco-nexus-3000-nx>

NEW QUESTION 69

A cisco Nexus 9000 series switch experiences a startup configuration corruption. The engineer must implement a procedure to recover configuration file from the switch. Which command set must be used?

- A. * 1. Copy the running-configuration to the startup configuration.* 2. Clear the current configuration of the switch.* 3. Restart the device.* 4. Copy a previously saved configuration file to the running configuration.
- B. * 1. Clear the current configuration of the switch* 2. Restart the device.* 3. Copy the running configuration to the startup configuration* 4. Copy a previously saved configuration file to the running configuration
- C. * 1. Clear the current configuration of the switch* 2. Restart the device.* 3. Copy a previously saved configuration file to the running-configuration* 4. Copy the running-configuration to the startup configuration.
- D. * 1.Restarting device.* 2. Copy the running-configuration file to a remote server.* 3. Clear the current configuration of the switch.* 4. Copy the running configuration to the startup configuration

Answer: C

Explanation:

Problems, such as memory corruption, can occur that make it necessary for you to recover your configuration from a backed-up version.

Each time that you enter a copy running-config startup-config command, a binary file is created and the ASCII file is updated. A valid binary configuration file reduces the overall boot time significantly. A binary file cannot be uploaded, but its contents can be used to overwrite the existing startup configuration. The write erase command clears the binary file.

SUMMARY STEPS

- * 1. write erase
- * 2. reload
- * 3. copy configuration-file running-configuration
- * 4. copy running-config startup-config <https://www.cisco.com/c/en/us/td/docs/switches/datacenter/nexus9000/sw/93x/fundamentals/configuration/guide>

NEW QUESTION 74

An engineer must build a lab replica of a Cisco UCS production environment. The file must be imported into a new Cisco UCS cluster using a Cisco UCS manager GUI. The file must be in XML format and be exported from Cisco UCS Manager using encrypted method. Which two configuration parameters should be selected to meet these requirements?. (Choose two.)

- A. Type: Logical configuration
- B. Protocol SCP

- C. Type Full state
- D. Protocol TFTP
- E. Type All configuration

Answer: BE

NEW QUESTION 79

A network engineer must prevent data corruption due to cross fabric communication in an FCoE environment. Which configuration must be applied to the Cisco Nexus Unified Switches to achieve this objective?

- A. Switch(config)#fcoe fcmmap 0e,fc,2a
- B. Switch(config-if)# no fcoe fcf-priority 0
- C. Switch(config-if) # shutdown lan
- D. Switch(config) # no fcoe fcf-priority

Answer: A

Explanation:

2. switch(config)# fcoe fcmmap fabric-map

3. (Optional) switch(config)# no fcoe fcmmap fabric-map

DETAILED STEPS

	Command or Action	Purpose
Step 1	switch# configure terminal	Enters configuration mode.
Step 2	switch(config)# fcoe fcmmap fabric-map	Configures the global FC-Map. The default value is 0E.FC.00. The range is from 0E.FC.00 to 0E.FC.FF.
Step 3	switch(config)# no fcoe fcmmap fabric-map	(Optional) Resets the global FC-Map to the default value of 0E.FC.00.

This example shows how to configure the global FC-Map:

switch# configure terminal

switch(config)# fcoe fcmmap 0e.fc.2a

https://www.cisco.com/c/en/us/td/docs/switches/datacenter/nexus5000/sw/fcoe/b_Cisco_Nexus_5000_Series_NX-OS_Fibre_Channel_over_Ethernet_Configuration_Guide/_Cisco_Nexus_5000_Series_NX-OS_Fibre_Channel_over_Ethernet_Configuration_Guide_chapter3.html
You can prevent data corruption due to cross-fabric talk by configuring an FC-Map that identifies the Fibre Channel fabric for this Cisco Nexus device. When the FC-Map is configured, the switch discards the MAC addresses that are not part of the current fabric.
switch(config)# fcoe fcmmap fabric-map Configures the global FC-Map. The default value is 0E.FC.00. The range is from 0E.FC.00 to 0E.FC.FF.
https://www.cisco.com/c/en/us/td/docs/switches/datacenter/nexus5000/sw/fcoe/513_n1_1/b_Cisco_n5k_fcoe_co

NEW QUESTION 82

An engineer needs to connect Cisco UCS Manager to an external storage array. Due to budget limitations, the engineer must connect a Cisco UCS manager directly to an FC storage port. Which two actions must be taken to complete this connection? (Choose two)

- A. Configure the fabric interconnect in FC switch mode
- B. Create a storage connection policy
- C. Set FC zoning to disabled when creating the VSAN
- D. Configure the fabric interconnect in end host mode
- E. Create the required VSAN in the SAN cloud

Answer: AC

NEW QUESTION 85

Which two statements describe the process of upgrading an EPLD on a Cisco MUS 9000 Series Switch? (Choose two)

- A. EPLDs are capable to be upgraded without replacing the hardware
- B. The CPLDs for all the modules on a switch must be upgraded at the same time
- C. An upgrade verification identifies the impact of each EPLD upgrade
- D. EPLDs are only capable to be upgraded to the latest F
- E. D image
- F. EPLD upgrades are capable to be completed without powering down the module during the upgrade

Answer: AC

NEW QUESTION 89

Refer to the exhibit.

```
N5K-1 (config)#interface fc2/3
N5K-1 (config-if)#switchport mode sd
N5K-1 (config-if)# no shutdown
```

What is the result of implementing this configuration?

- A. The Fibre Channel interface is configured for synchronization distribution.
- B. The Fibre Channel interface is configured for SPAN.
- C. The Fibre Channel interface is configuration for source distribution.
- D. The Fibre Channel interface is configured for FSPF.

Answer: B

Explanation:

https://www.cisco.com/c/en/us/td/docs/switches/datacenter/nexus5000/sw/san_switching/421_n1_1/b_Cisco_n5k_nxos_sanswitching_config_guide_rel421_n1_1/Cisco_n5k_nxos_sanswitching_config_guide_rel421_n1_1/Cisco_Nexus_5000_Series_Switch_CLI_Software_Configuration_Guide_chapter50.html

NEW QUESTION 93

When a strict CoPP policy is implemented, which statement describes an event during which packets are dropped?

- A. Fifteen SSH sessions remain connected to the switch.
- B. A large system image is copied to a switch by using the default VRF.
- C. A ping sweep is performed on a network that is connected through a switch.
- D. A web server that is connected to a switch is affected by a DDoS attack.

Answer: B

Explanation:

A large image upload is more probable to generate that level of traffic.

15 SSH session would mean an average of 200pps per session, and they simply mention that the session remain connected, if there are no inputs in them they have 0pps and even a full config push would probably not require 200 packets total.

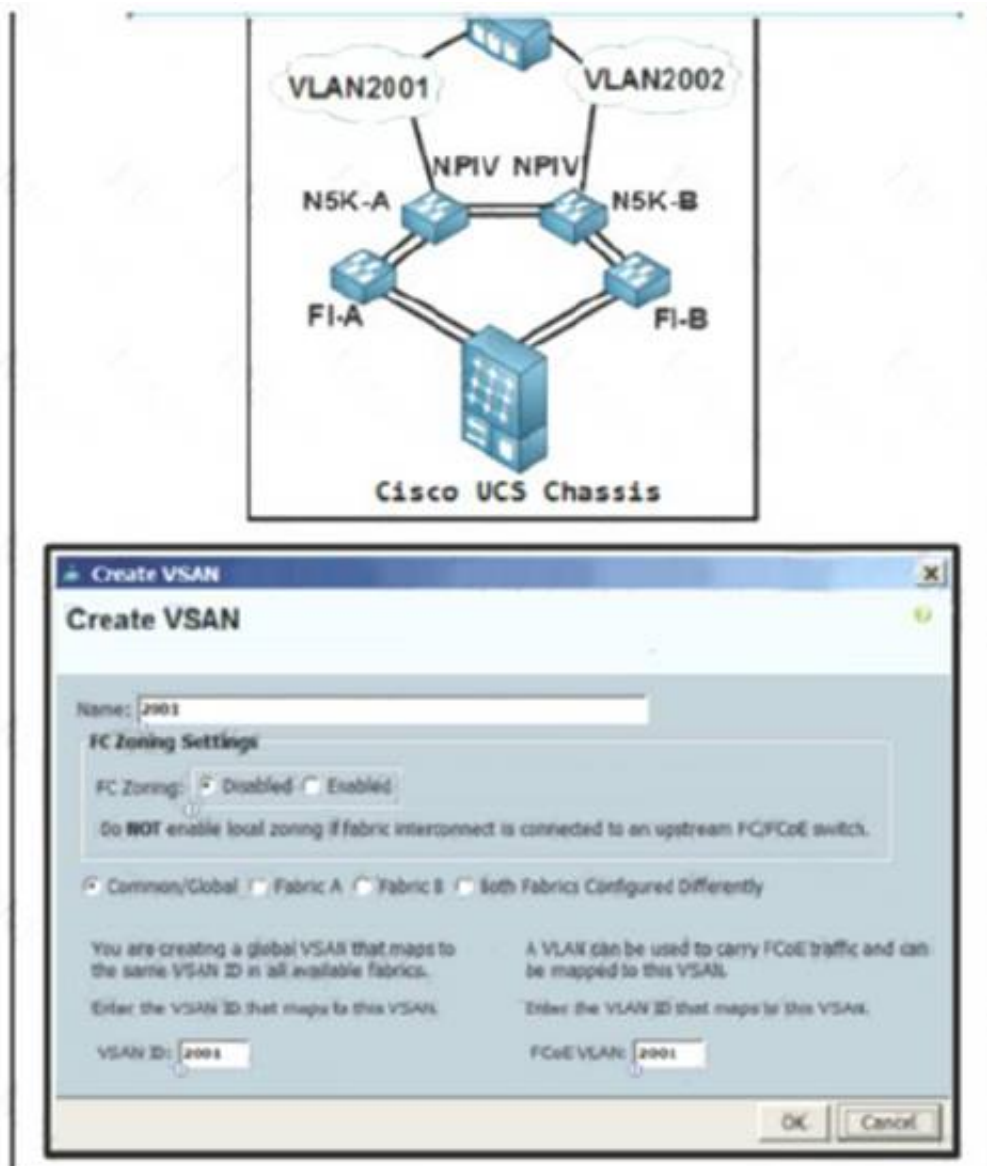
class copp-system-p-class-management set cos 2

police cir 3000 pps bc 32 packets conform transmit violate drop

https://www.cisco.com/c/en/us/td/docs/switches/datacenter/nexus9000/sw/6-x/security/configuration/guide/b_Cisco_Nexus_9000_Series_NX-OS_Security_Configuration_Guide/b_Cisco_Nexus_9000_Series_NXOS_Security_Configuration_Guide_chapter_010001.html

NEW QUESTION 96

Refer to the exhibit.



An engineer is configuring a VSAN on the network Which option must be selected to create the VSAN?

- A. Fabric B
B. FC Zoning Enabled

- C. Fabric A
- D. Common/Global

Answer: C

Explanation:

<https://www.cisco.com/c/en/us/td/docs/switches/datacenter/mds9000/sw/nx-os/configuration/guides/fabric/fabric>
https://www.cisco.com/c/en/us/td/docs/unified_computing/ucs/ucs-central/GUI-User-Guides/Storage-Mgmt/1-5/

NEW QUESTION 98

Due to a major version change, an engineer must perform a software upgrade on a Cisco Nexus Series switch. Which two technologies can be implemented to reduce disruptions to the network during the upgrade? (Choose two.)

- A. MLAG
- B. HSRP
- C. PAgP
- D. VDC
- E. vPC

Answer: BE

NEW QUESTION 101

A network administrator is using the Cisco ESA with Cisco AMP to upload files to the cloud for analysis. The network is congested and is affecting communication. How will the Cisco ESA handle any files which need analysis?

- A. Cisco AMP calculates the SHA-256 fingerprint, caches it, and periodically attempts the upload.
- B. The Cisco ESA immediately makes another attempt to upload the file.
- C. The file is queued for upload when connectivity is restored.
- D. The file upload is abandoned.

Answer: A

NEW QUESTION 103

An engineer must create a scheduler configuration to create two backup jobs per day. The backup file must be copied to a server in the operations VRF. Which configuration accomplishes this task?

A)

```
scheduler schedule name CNFGBACKUP
  job name BACKUP-JOB
  copy running-config tftp:/10.19.11.12/${SWITCHNAME}-${TIMESTAMP}.cfg vrf operations
  time start now repeat 12:00
```

B)

```
scheduler schedule name CNFGBACKUP
  job name BACKUP-JOB
  show tech-support | redirect vrf operations tftp:/10.19.11.12/${SWITCHNAME}-${TIMESTAMP}.cfg
  time start daily 12:30 0:30
```

C)

```
scheduler schedule name CNFGBACKUP
  job name BACKUP-JOB
  copy startup-config tftp:/10.19.11.12/${SWITCHNAME}-${TIMESTAMP}.cfg
  time daily 12:30 0:30
```

D)

```
scheduler schedule name CNFGBACKUP
  job name BACKUP-JOB
  copy vrf operations config tftp:/10.19.11.12/${SWITCHNAME}-${TIMESTAMP}.cfg
  time start 12:30 repeat 12
```

- A. Option A
- B. Option B
- C. Option C
- D. Option D

Answer: A

NEW QUESTION 105

A customer requires a solution to orchestrate the configuration of storage arrays, firewalls, and Cisco ACI networking. Additionally, the orchestration product must support open automation and a service catalog. Which solution meets these requirements?

- A. Cisco UCS Director

- B. Cisco Intersight
- C. Cisco Data Center Network Manager
- D. Cisco Workload Optimization Manager

Answer: C

NEW QUESTION 110

The EPLD update of the supervisor module has been scheduled for several cisco MDS 9000 switches. What will be the impact of the update?

- A. All control plane traffic is stopped for the duration of the EPLD update and the switch remain operational for the duration of the upgrade.
- B. The redundant supervisor takes over while the EPLD update is in progress and there is no service disruption.
- C. All traffic is stopped for the duration of the EPLD update and the switch is rebooted after the upgrade is completed.
- D. The redundant supervisor takes over while the EPLD update is in progress and the switch is rebooted after the upgrade is completed.

Answer: C

Explanation:

An EPLD update of the supervisor module of fabric switches (Cisco MDS 9100, Cisco MDS 9200, and Cisco MDS 9300 Series switches) is disruptive since there is no redundant supervisor to take over while the update is in progress. All traffic through the system is stopped for the duration of the update and the switch is rebooted after the upgrade has completed. The update may take up to 30 minutes to complete.

https://www.cisco.com/c/en/us/td/docs/switches/datacenter/mds9000/sw/6_2/release/notes/epld/epld_rn.html#pg

NEW QUESTION 114

Which statement describes monitoring Fibre Channel traffic on a Cisco UCS 6332 Fabric Interconnect?

- A. Fibre Channel traffic is monitored only on one vHBA per server.
- B. The destination port for monitoring must be an unassigned Fibre Channel port.
- C. The monitoring of Fibre Channel traffic is limited to the default VSAN.
- D. Fibre Channel traffic is capable to be monitored as it is encapsulated as FCoE.

Answer: D

Explanation:

You can monitor Fibre Channel traffic using either a Fibre Channel traffic analyzer or an Ethernet traffic analyzer. When Fibre Channel traffic is monitored with an Ethernet traffic monitoring session, at an Ethernet destination port, the destination traffic is FCoE. The Cisco UCS 6300 Fabric Interconnect supports FC SPAN only on the ingress side. A Fibre Channel port on a Cisco UCS 6248 Fabric Interconnect cannot be configured as a source port.

https://www.cisco.com/c/en/us/td/docs/unified_computing/ucs/ucs-manager/GUI-User-Guides/System-Monitoring/3-2/b_UCSM_GUI_System_Monitoring_Guide_3_2/b_UCSM_GUI_System_Monitoring_Guide_3_2_chapter_01101.pdf

NEW QUESTION 117

Refer to the exhibit

```
switch1#show run interface Vlan 10

interface Vlan10
  description Service Datacenter-Rack-A
  ip address 209.165.200.225 255.255.255.224
!
end

switch1#
```

An engineer must mirror the traffic on a switch. The engineer locates the server port that requires monitoring on switch1, but the packet sniffer is on switch2. The engineer must configure the source IP address on switch1. Which command accomplishes this goal?

- A. monitor session 10 type erspan-source
- B. monitor erspan origin ip-address 209.165.200.225
- C. source ip 209.165.200.225
- D. source interface vbn512

Answer: B

NEW QUESTION 122

An engineer needs to monitor ingress traffic that arrives at interface Ethernet 1/3 that belongs to a Cisco Nexus 5600 Series Switch. The traffic analyzer machine located at interface Ethernet 1/5 is already monitoring other production, and the traffic analyzer must not be impacted by the traffic captured from the interface Eth1/3. The operations team allocated a traffic budget for the new monitoring session of 1 Gbps to meet this requirement. Which set of commands configures the SPAN session?

- ☐ interface Ethernet 1/3
switchport monitor rate-limit 1G
- monitor session 2
destination interface ethernet 1/5
source interface Eth 1/3
- ☐ interface Ethernet 1/3 rx
switchport mode SD
switchport monitor rate-limit 1G
monitor session2
destination interface ethernet 1/5
- ☐ interface Ethernet 1/3
monitor rate-limit 1G
destination interface ethernet 1/5
source interface rx
- interface Ethernet 1/5
monitor session 2
destination interface tx
- ☐ interface Ethernet 1/3
monitor session 2
destination interface ethernet 1/5
source interface rx
- interface Ethernet 1/5
monitor rate-limit 1G

- A. Option A
- B. Option B
- C. Option C
- D. Option D

Answer: A

Explanation:

Find Matches in This Book

	switch(config)# interface ethernet slot/port	Enters interface configuration mode for the specified Ethernet interface selected by the slot and port values.
Step 3	switch(config-if)# switchport monitor rate-limit 1G	Specifies that the rate limit is 1 Gbps.
Step 4	switch(config-if)# exit	Reverts to global configuration mode.

Example

This example shows how to limit the bandwidth on Ethernet interface 1/2 to 1 Gbps:

```

switch(config)# interface ethernet 1/2
switch(config-if)# switchport monitor rate-limit 1G
switch(config-if)#
    
```

Configuring Source Ports

Procedure

	Command or Action	Purpose
Step 1	switch# configure terminal	Enters global configuration mode.
Step 2	switch(config) # monitor session session-number	Enters monitor configuration mode for the specified monitoring session.
Step 3	switch(config-monitor) # source interface type slot/port [rx tx both]	Adds an Ethernet SPAN source port and specifies the traffic direction in which to duplicate packets. You can enter a range of Ethernet, Fibre Channel, or virtual Fibre Channel ports. You can specify the traffic direction to duplicate as ingress (Rx), egress (Tx), or both. By default, the direction is both.

https://www.cisco.com/c/en/us/td/docs/switches/datacenter/nexus5600/sw/system_management/7x/b_5600_System_Mgmt_Config_7x/configuring_span.html

NEW QUESTION 127

An engineer must perform a software upgrade on a production Cisco Nexus 7000 Series Switch. Before the upgrade activity, the requirement is for all ports to be shut down and routing protocols to terminate gracefully. Which feature must be used to meet these requirements?

- A. Configuration Profile
- B. Maintenance Mode Profile
- C. Switch Profile

D. Service Profile Template

Answer: B

NEW QUESTION 131

A DNS server with IP address 192.168.1.1 is deployed in a data center. A network engineer must configure a Cisco UCS Fabric Interconnect to use this DNS. Which configuration should be applied?

- ☒ **Option A**
fcli-mgmt-A# scope system
fcli-mgmt-A /system # create dns 192.168.1.1
fcli-mgmt-A /system* # commit-buffer
- ☐ **Option B**
fcli-mgmt-A# scope fabric-interconnect a
fcli-mgmt-A /fabric-interconnect # set name 192.168.1.1
fcli-mgmt-A /fabric-interconnect # scope system
fcli-mgmt-A /system # commit-buffer
- ☐ **Option C**
fcli-mgmt-A# scope fabric-interconnect a
fcli-mgmt-A /fabric-interconnect # set name 192.168.1.1
fcli-mgmt-A /fabric-interconnect* # commit-buffer
- ☐ **Option D**
fcli-mgmt-A# scope system
fcli-mgmt-A /system # scope services
fcli-mgmt-A /system/services # create dns 192.168.1.1
fcli-mgmt-A /system/services* # commit-buffer

- A. Option A
- B. Option B
- C. Option C
- D. Option D

Answer: D

NEW QUESTION 133

A network engineer repeatedly saves a configuration on Catalyst switches to NVRAM using the write memory command. What action should be taken to implement the same action on Nexus switches?

- A. Use the write memory command to save the configuration.
- B. Use the alias command to use the write memory command.
- C. Use the exit command to leave the configuration mode and save the configuration automatically.
- D. Use the wri command to use the copy running-config startup-config command.

Answer: B

NEW QUESTION 137

An engineer is asked to modify an overridden policy by changing the number of FCNS database entries to 1500 and then generate a message. What configuration will accomplish this task?

- ☒ **Option A**
event manager applet fcns_policyevent fens entries max-per-switch 1500
action 1.0 syslog priority warnings msg FCNS DB entries have reached the EEM limit
action 2.0 policy-default
- ☐ **Option B**
event manager applet fcns_policy override _fcns_entries_max_per_switch
action 1.0 syslog priority errors "CNS DB entries have reached the EEM limit"
action 2.0 policy-default
- ☐ **Option C**
event manager applet fcns_policy override _fcns_entries_max_per_switch
event fens entries max-per-switch 1500
action 1.0 syslog priority warnings msg FCNS DB entries have reached the EEM limit
- ☐ **Option D**
event manager applet fcns_policy action 1.0 syslog priority warnings msg FCNS DB entries have reached the EEM limit
action 2.0 event-default

- A. Option A
- B. Option B
- C. Option C
- D. Option D

Answer: C

Explanation:

The following example modifies an overridden policy by changing the number of FCNS database entries to 1500. It also generates both the configured and the default syslog messages of the default system policy event manager applet fcns_policy override fcns_entries_max_per_switch event fcns entries max-per-switch 1500 action 1.0 syslog priority warnings msg FCNS DB entries have reached the EEM limit.

NEW QUESTION 139

Which two actions should be performed before upgrading the infrastructure and firmware of multiple UCS blades? (Choose two)

- A. Verify if the bootflash on the fabric interconnects in the Cisco UCS has at least 15% available space
- B. Enable Smart Call Home feature during the firmware upgrade process
- C. Verify if the bootflash on the fabric interconnects in the Cisco UCS has at least 10% available space
- D. Run the Check Conformance feature to verify that all your components are running the compatible firmware version after the upgrade
- E. Get Full State and All Configuration backup files before beginning the upgrade

Answer: DE

NEW QUESTION 140

An engineer must implement a Cisco UCS system at a customer site. One of the requirements is to implement SAN boot. The storage system maps the source WWPN to a unique LUN. Which method does Cisco recommend to configure the SAN boot?

- A. Create a SAN boot policy in which every initiator is mapped to the same target LUN.
- B. Define the vHBAs as bootable and leave the default values on the target definition.
- C. Define the vHBAs as bootable and leave the boot target definition empty.
- D. Create a SAN boot policy in which every initiator is mapped to a different target LUN.

Answer: A

Explanation:

While you have multiple zones consisting of FC vHBAs and storage target wwpsns for SAN Fabrics A and B, you are ultimately booting off of the same boot LUN. Multiple paths to get to the same boot device which correspond with the same LUN ID.

https://www.cisco.com/c/en/us/td/docs/unified_computing/ucs/ts/guide/UCSTroubleshooting/UCSTroubleshooting_chapter_0110.html#r_sanarrayconfigurationchecklist

NEW QUESTION 142

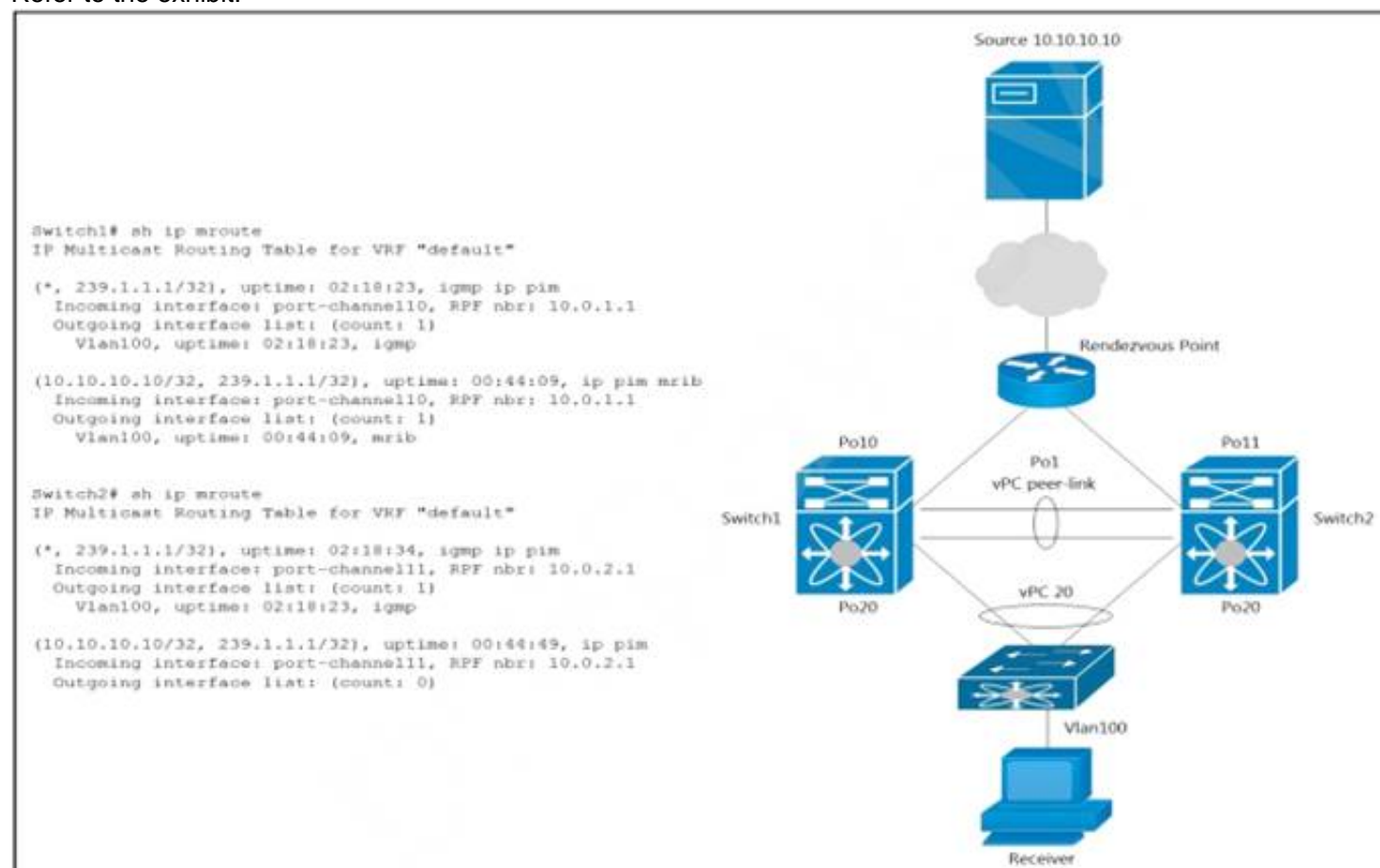
A company is running a pair of Cisco Nexus 7706 series switches as part of a data center segment. All network engineers have restricted read-write access to the core switches. A network engineer must add a new FCoE VLAN to allow traffic from services toward FCoE storage. Which set of actions must be taken to meet these requirements?

- A. * 1. Create a user defined role and add the required privileges.* 2. Assign a role to a user.
- B. * 1. Add the required privilege to the VDC-admin role.
- C. Commit the changes to the active user database.
- D. * 1. Modify a network-operator role and add the required privileges.* 2. Assign a VDC-operator role to a user.
- E. * 1. Assign the network-admin role to a user.* 2. Commit the role to the switch to the active user database

Answer: B

NEW QUESTION 145

Refer to the exhibit.



A host with a source address 10.10.10.10 sends traffic to multicast group 239.1.1.1. How do the vPC switches forward the multicast traffic?

- A. If multicast traffic is received on Switch1 over the vPC peer-link, the traffic is dropped
- B. If multicast traffic is received on Po10 Switch1, the traffic is forwarded out on Po1 and Po20

- C. If multicast traffic is received on Po11 Switch2, the traffic is forwarded out only on Po20
D. If multicast traffic is received on Po11 Switch2, the traffic is dropped.

Answer: D

Explanation:

<https://www.cisco.com/c/en/us/support/docs/ip/multicast/214140-multicast-forwarding-in-vpc-based-on-loc.htm>

NEW QUESTION 149

Refer to the exhibit.

```
N7K-1
spanning-tree vlan 1-10 priority 8192

vpc domain 100
  role priority 100
  peer-keepalive destination 10.1.1.2 source 10.1.1.1
vrf default
  delay restore 60
  peer-switch
  auto-recovery
  ip arp synchronize

N7K-2
spanning-tree vlan 1-10 priority 8192

vpc domain 100
  role priority 200
  peer-keepalive destination 10.1.1.1 source 10.1.1.2
vrf default
  delay restore 60
  peer-switch
  auto-recovery
  ip arp synchronize
```

The STP priority of N7K-1 and N7K-2 are the lowest in the network. Which statement describes STP on the vPC?

- A. N7K-1 appears as the STP root.
B. N7K-2 appears as the STP root.
C. N7K-1 and N7K-2 appear as a single STP root.
D. N7K-1 preempts N7K-2 as the STP root.

Answer: C

NEW QUESTION 152

Which protocol does Cisco Hyperflex use to share data among nodes in a VMware vSphere environment?

- A. CIFS
B. FCoE
C. SMB
D. NFS

Answer: D

NEW QUESTION 157

Refer to the exhibit.

```
restart pim
```

Which result of running the command is true?

- A. The PIM database is deleted.
B. Multicast traffic forwarding is suspended.
C. PIM join messages are suspended.
D. MRIB is flushed

Answer: A

Explanation:

When you restart PIM, the following tasks are performed: The PIM database is deleted. The MRIB and MFIB are unaffected and forwarding of traffic continues. The multicast route ownership is verified through the MRIB. Periodic PIM join and prune messages from neighbors are used to repopulate the database.
https://www.cisco.com/c/en/us/td/docs/switches/datacenter/nexus9000/sw/6-x/multicast/configuration/guide/b_C

NEW QUESTION 159

Drag and drop the steps on the left onto the order that they must be implemented on the right to recover a fabric interconnect when there is no working image on the bootflash.

Copy the main image files.	step 1
Configure the management interfaces.	step 2
Boot the kickstart image using TFTP.	step 3
Install the files.	step 4

- A. Mastered
- B. Not Mastered

Answer: A

Explanation:

Copy the main image files.	Boot the kickstart image using TFTP.
Configure the management interfaces.	Configure the management interfaces.
Boot the kickstart image using TFTP.	Copy the main image files.
Install the files.	Install the files.

NEW QUESTION 160

Which statement about the impact of a rolling EPLD upgrade on a Cisco MDS 9000 Series Switch is true?

- A. All modules on the switch are disrupted.
- B. An EPLD upgrade is nondisruptive.
- C. Only the modules that are being upgraded are disrupted.
- D. The upgrade can be performed from the standby supervisor module.

Answer: C

Explanation:

https://www.cisco.com/c/en/us/td/docs/switches/datacenter/mds9000/sw/6_2/release/notes/epld/epld_rn.html#pgfId-241919

NEW QUESTION 162

Which Cisco UCS Manager XML encoded backup type must be used to back up user names, roles, and service profiles?

- A. Full State Configuration
- B. Logical Configuration
- C. All Configuration
- D. System Configuration

Answer: C

NEW QUESTION 166

Refer to the exhibit.

```
; Router 1 configuration
interface loopback1
  ip address 10.10.32.121/30
  ip ospf network point-to-point
  ip router ospf 1 area 0.0.0.0
  ip pim sparse-mode

ip pim rp-address 10.10.32.122 group-list 225.0.0.0/8 bi-dir
```

In a bidirectional PIM network using Phantom RP as an RP redundancy mechanism, two Cisco NX-OS routers have these requirements:

- R1 must be the active RP.
- R2 must be the backup RP that is used only if R1 is not reachable

Drag and drop the configuration steps to complete the configuration for Router 2. Not all configuration steps are used.

```
; Router 2 configuration
interface loopback1
  ip address 
  ip ospf network 
  ip router ospf 1 area 0.0.0.0
  ip pim 

ip pim rp-address  group-list 225.0.0.0/8 bi-dir
```

10.10.32.121/32	10.10.32.121	point-to-point	broadcast
10.10.32.121/29	10.10.32.122	sparse-mode	dense-mode

- A. Mastered
 B. Not Mastered

Answer: A

Explanation:

Graphical user interface, text, application Description automatically generated

Answer :

```
ip address 10.10.32.121/29
ip ospf network point-to-point
router ospf 1 area 0.0.0.0
ip pim sparse-mode

ip pim rp-address 10.10.32.122 group-list 255.0.0.0/8 bi-dir
```

NEW QUESTION 171

An engineer configures a role for a new user in Cisco UCS Manager The role should allow the user to configure vHBAs, vNICs, and server port types. Which role should be assigned to allow the engineer to complete this task?

- A. network administrator
 B. operations
 C. server-compute
 D. AAA administrator

Answer: A

NEW QUESTION 172

An engineer must export the Cisco UCS Manager configuration for backup purposes. The requirement is to export the configuration that contains the AAA and

RBAC configuration Also the file must be stored a human-readable format 'Much backup type must be selected to meet these requirements?

- A. logical configuration
- B. system configuration
- C. fun state
- D. all configuration

Answer: B

NEW QUESTION 173

A network engineer must migrate a Cisco WSA virtual appliance from one physical host to another physical host by using VMware vMotion. What is a requirement for both physical hosts?

- A. The hosts must run Cisco AsyncOS 10.0 or greater.
- B. The hosts must have access to the same defined network.
- C. The hosts must run different versions of Cisco AsyncOS.
- D. The hosts must use a different datastore than the virtual appliance

Answer: B

NEW QUESTION 175

An engineer is implementing the Cisco ACI fabric and must create two different vPCs from leaf switches A and B. The vPCs are deployed as follows:

- vPC 1 encompasses ports Eth 1 /1 on leaf A and B and connects to server 1.
- vPC 2 encompasses port Eth1/2 on leaf A and B and connects to server 2.

A leaf switch profile listing leaves A and B is already configured Which ACI object must be created to meet these requirements?

- A. two vPC interface policy groups
- B. one access port interface policy group
- C. two PortChannel interface policy groups
- D. one vPC interface policy group

Answer: A

NEW QUESTION 176

An engineer must perform a nondisruptive software upgrade on a dual supervisor Cisco Nexus 7000 series switch. What is the cause of the upgrade being disruptive?

- A. The show install all impact command is not issued before the upgrade
- B. The kickstart image is installed by using the Install all kickstart image system image command
- C. Attempt to simultaneously upgrade more than three cards
- D. Change to the configuration settings or the network connections during the upgrade process

Answer: D

NEW QUESTION 177

An engineer must perform backup and restore of the Cisco UCS Manager configuration. The configuration must be stored on a remote server via XML encoding. The backup must store the configurations of the chassis. FEX, rack servers. IOMs, and blade server. Which set of actions accomplishes these goals?

- A. Perform a logical configuration backup and run the replace import method.
- B. Perform a ful state configuration backup and run the restore procedure.
- C. Perform a system configuration backup and run the merge import method
- D. Perform an all configuration backup and run the system restore procedure.

Answer: A

NEW QUESTION 181

Refer to the exhibit.

```
UCS-A# scope adapter 1/1/1
UCS-A# /chassis/server/adapter # show image
Name                               Type      Version    State
-----
ucs-m81kr-vic.2.2.1b.bin           Adapter   2.2(1b)    Active

UCS-A# /chassis/server/adapter # update firmware 2.2(1b)
UCS-A# /chassis/server/adapter* # activate firmware 2.2(1b)
set-startup-only
UCS-A# /chassis/server/adapter* # commit-buffer
UCS-A# /chassis/server/adapter #
```

What is the result of this series of commands?

- A. It reboots the server immediately.
- B. It verifies the firmware update on the server.
- C. It activates the firmware on the next adapter boot.

D. It updates the firmware on adapter 1/1/1 immediately.

Answer: C

Explanation:

https://www.cisco.com/c/en/us/td/docs/unified_computing/ucs/ucs-manager/CLI-User-Guides/Firmware-Mgmt/ Graphical user interface, text, application, email
 Description automatically generated

Step 6	UCS-A /chassis/server/adapter # activate firmware version-num [set- startup-only]	Activates the selected firmware version on the adapter. Use the set-startup-only keyword if you want to move the activated firmware into the pending-next-boot state and not immediately reboot the server. The activated firmware does not become the running version of firmware on the adapter until the server is rebooted. You cannot use the set-startup-only keyword for an adapter in the host firmware package.
--------	--	---

NEW QUESTION 185

An engineer must optimize ARP responses and reduce unnecessary ARP broadcasts over the VXLAN/EVPN fabric. Which action accomplishes these tasks?

- A. Configure ip proxy-arp under the VLAN SVI associated with the VXLAN VNI.
- B. Configure ip proxy-arp within the VXLAN VNI configuration under the VTEP NVE interface.
- C. Configure suppress-arp within the VXLAN VNI configuration under the VTEP NVE interface.
- D. Configure suppress-arp under the VLAN SVI associated with the VXLAN VNI.

Answer: C

NEW QUESTION 186

An engineer needs to connect Cisco UCS Fabric Interconnect (FI) to an external storage array. Due to budget limitations, the engineer must connect a Cisco UCS FI directly to an FC storage port. Which two actions must be taken to complete this connection? (Choose two.)

- A. Configure the fabric interconnect in FC switch mode.
- B. Set FC zoning to disabled when creating the VSAN
- C. Create a storage connection policy.
- D. Configure the fabric interconnect in end-host mode,
- E. Create the required VSAN in the SAN cloud.

Answer: AE

NEW QUESTION 190

Which data interchange format is presented in this output?

```
{
  "totalCount": "1",
  "imdata": [
    {
      "fabricNode": {
        "attributes": {
          "address": "10.0.40.65",
          "apicType": "apic",
          "dn": "topology/pod-1/node-201",
          "id": "201",
          "lastStateModTs": "2020-09-07T10:20:57.236+00:00",
          "modTs": "2020-09-07T10:21:18.912+00:00",
          "model": "N9K-C9336PQ",
          "monPolDn": "uni/fabric/monfab-default",
          "role": "spine",
          "serial": "FDO39106329J",
          "uid": "0",
          "vendor": "Cisco Systems, Inc",
        }
      }
    }
  ]
}
```

- A. XML
- B. YAML
- C. JSON
- D. CSS

Answer: C

NEW QUESTION 194

An engineer must start a software upgrade on a Cisco Nexus 5000 Series Switch during a zone merge. What is the result of this action?

- A. The zone merge stops.
- B. The zone merge pauses until the upgrade completes
- C. The upgrade stops

D. The zone merge executes and then the upgrade completes.

Answer: C

Explanation:

https://www.cisco.com/c/en/us/td/docs/switches/datacenter/nexus5500/sw/upgrade/602_N2_2/n5500_upgrade_d

The specific requirements for a nondisruptive upgrade (ISSU) are as follows:

- **Topology requirements**– A Cisco Nexus device on which an ISSU is being initiated should not be in one of the unsupported topologies listed in the previous figure. No interface should be in a spanning-tree designated forwarding state. Also, do not configure Bridge Assurance on any interface of the Cisco Nexus device. vPC peer-link is an exception to these requirements.
- **Layer 2 requirement**– The ISSU process aborts if the system has any Link Aggregation Control Protocol (LACP) fast timers configured.
- **FC/FCoE requirements**–Check that the topology is stable for an ISSU to work correctly. You must check the following:
 - **Domain Manager**–As part of the installation process, domain manager checks if the fabric is in a stable state. If the fabric is not stable, the installation aborts.
 - **CFS**–As part of the installation process, Cisco Fabric Services (CFS) checks if any application (ntp, fsm, rcsn, fctime) is locked. If any application is holding a CFS lock, the installation aborts.
 - **Zone Server**– The installation process aborts if a zone merge or zone change request is in progress.
 - **FSPF**–As part of the upgrade process, Fabric Shortest Path First (FSPF) verifies if the configured interface dead interval is more than 80 seconds; otherwise, the installation aborts.

NEW QUESTION 195

An administrator needs to configure an automated policy to shut down a link when a given threshold is exceeded on MDS switch. Which feature needs to be used?

- A. Scheduler
- B. RMON
- C. EEM
- D. Call Home

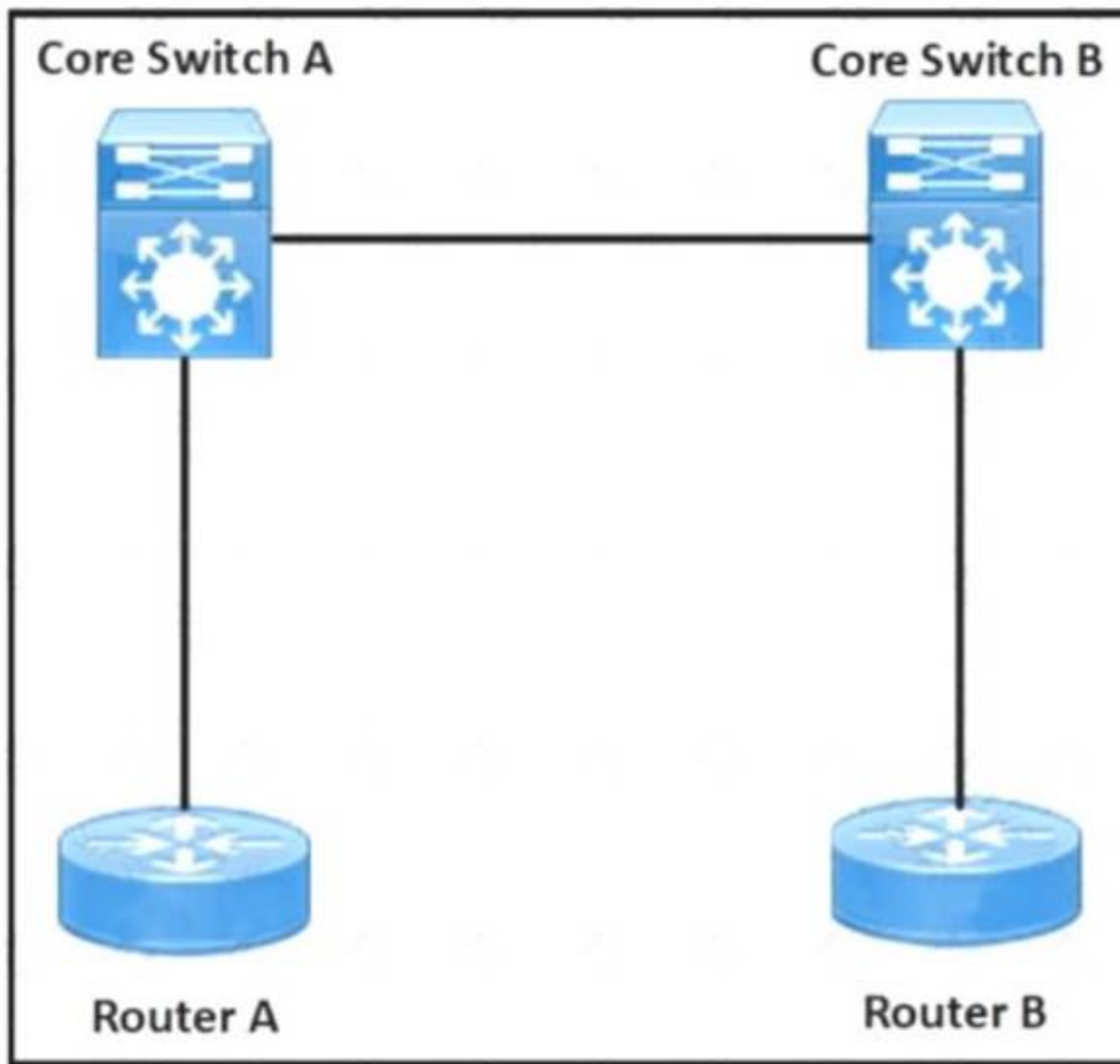
Answer: C

Explanation:

https://www.cisco.com/c/en/us/td/docs/switches/datacenter/mds9000/sw/6_2/configuration/guides/interfaces/nx-os/cli_interfaces/intf.html

NEW QUESTION 199

Refer to the exhibit.



```
feature vn-segment-vlan-based
feature nv overlay

vlan 10
  vn-segment 10010

Interface Loopback0
  ip address 10.10.0.1/32
  ip pim sparse mode
```

A network engineer configures the VXLAN between the routers in a data center. The VLAN 10 must be extended between routers A and B. The initial VXLAN configuration is completed on Router A. Which configuration finishes the VXLAN configuration on Router A?

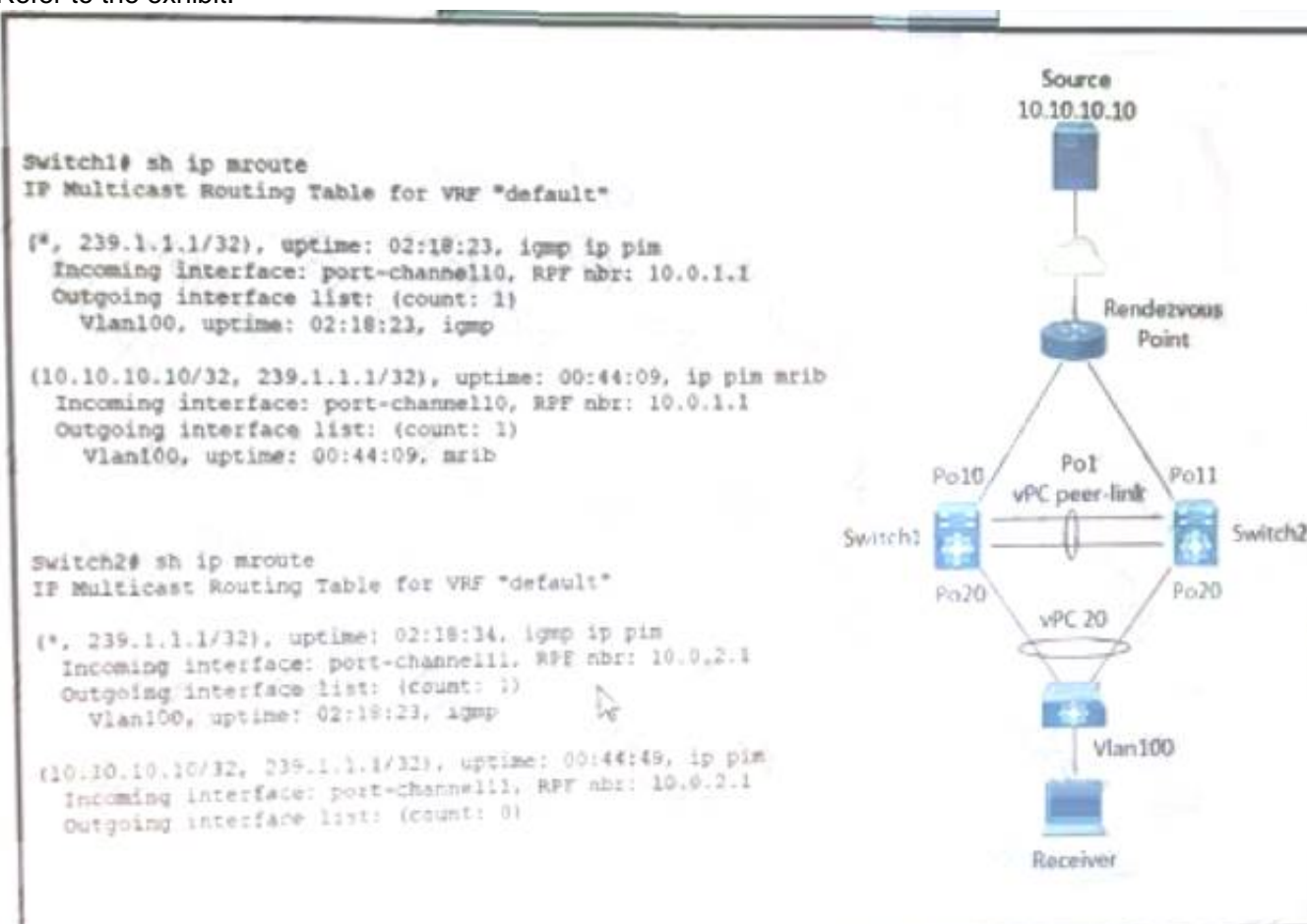
- A.
- ```
vrf context tenant1
vni 10010

Interface nve1
source-interface lo0
no shutdown
member vni 10010 interface 10.10.0.1
```
- B.
- ```
system bridge-domain 10
member vni 10010
interface nve1
no shutdown
source-interface lo0
```
- C.
- ```
Interface nve1
no shutdown
source-interface lo0
vni 10100 I2
rd auto
```
- D.
- ```
Interface nve1
no shutdown
source-interface lo0
member vni 10010 mcast-group 231.1.1.1
```

Answer: C

NEW QUESTION 202

Refer to the exhibit.



A host with source address 10.10.10.10. sends traffic to multicast group 239.1.1.1. how do the vPC switches forward the multicast traffic?

- A. If multicast traffic is received on Po11 Switch2, the traffic is forwarded out only one Po20.
- B. If multicast traffic is received on Po10 Switch1, the traffic is forwarded out on Po1 and Po20.
- C. If multicast traffic is received on Po11 and Switch2, the traffic is dropped.
- D. If multicast traffic is received on Switch over the vPC peer-link, the traffic is dropped.

Answer: C

Explanation:

<https://www.cisco.com/c/en/us/support/docs/ip/multicast/214140-multicast-forwarding-in-vpc-based-on-loc.htm>

NEW QUESTION 205

Which MAC address is an HSRP version 2?

- A. 0100.5E7F.FFFF
- B. 3799.9943 3000
- C. 0000.0C9F.F0C8
- D. 0000.OC07.AC1H

Answer: C

NEW QUESTION 208

APIC EPG Resolution Immediacy is set to "Immediate" Which statement is true about the Deployment Immediacy for VMM domains associated to EPGs?

- A. The "Immediate" and "On demand" options require a port group to be created on the VDS.
- B. If "On demand" is selected, the policy is programmed in the hardware only when the APIC detects a VM created in the EPG.
- C. If "On demand" is selected the policy is programmed in the hardware only when the first packet is received through the data path.
- D. If "immediate" is selected the policy is programmed in the hardware as soon as the leaf is booted.

Answer: C

Explanation:

"Deployment Immediacy On demand — Specifies that the policy is programmed in the hardware policy CAM only when the first packet is received through the data path."

https://www.cisco.com/c/en/us/td/docs/switches/datacenter/aci/apic/sw/1-x/aci-fundamentals/b_ACI-Fundament

NEW QUESTION 211

A network engineer must perform a backup and restore of the Cisco Nexus 5000 Series Switch configuration. The backup must be made to an external backup server. The only protocol permitted between the Cisco Nexus Series switch and the backup server is UDP. The backup must be used when the current working configuration of the switch gets corrupted. Which set of steps must be taken to meet these requirements?

- A. 1. Perform a running-config backup to an SFTP serve
- B. 2. Copy backup-config from the SFTP server to the running-config file.
- C. 1. Perform a startup-config backup to a TFTP serve
- D. 2. Copy backup-config from the backup server to the running-config file.
- E. 1. Perform a running-config backup to an SCP serve
- F. 2. Copy running-config in the boot flash to the running-config file.
- G. 1. Perform a startup-config backup to an FTP serve
- H. 2. Copy startup-config in the boot flash to the running-config file.

Answer: B

Explanation:

TFTP runs on UDP 69 = Is correct

NEW QUESTION 214

A new user with access privileges in the Finance department moves to a new Admin department. The user must have access privileges to the Admin department data and applications inside the Cisco UCS Manager Which set of changes must be implemented in Cisco UCS Central for the user to acquire the privileges?

- A. Create an Admin user account and remove the authentication service for the Finance privileges.
- B. Disable the Finance user account and add the authentication service for the Admin privileges.
- C. Create a new locale Admin and add the Admin department to the Admin local
- D. Delete the old locale
- E. Finance and remove the Finance department from the Finance locale.

Answer: C

NEW QUESTION 217

An engineer must configure remote authentication on a Cisco UCS system. The user password must be encrypted before it is sent to the authentication server. The company security policy requires the server to be based on an open standard. Drag and drop the UCS CLI AAA configuration commands from the left into the order in which they must be implemented on the right. Not all commands are used.



- A. Mastered
B. Not Mastered

Answer: A

Explanation:

UCS-A# scope security
UCS-A /security # scope radius
UCS-A /security/radius # create server radiusserv7
UCS-A /security/radius/server* # set key
UCS-A /security/radius/server* # commit-buffer

NEW QUESTION 219

Which two settings must be configured before enabling a Cisco UCS Manager domain for Cisco Intersight connectivity? (Choose two.)

- A. syslog redirection
B. DNS servers
C. SMTP servers
D. NTP servers
E. SMTP reply-to-address

Answer: BD

Explanation:

https://www.cisco.com/c/en/us/td/docs/unified_computing/ucs/ucs-manager/GUI-User-Guides/Admin-Management/4-1/b_Cisco_UCS_Admin_Mgmt_Guide_4-1/m_gui_cisco_intergight_management.html

NEW QUESTION 223

Host 1 is in VLAN 100 located in DataCenter 1 and Host2 is in VLAN200 located in DataCenter2. Which OTV VLAN mapping configuration allows Layer 2 connectivity between these two hosts?

A. DC1:
interface Overlay1
otv extend-vlan 100
otv vlan mapping 100 to 200

DC2:
interface Overlay1
otv extend-vlan 100
otv vlan mapping 100 to 200

B. DC1:
interface Overlay1
otv extend-vlan 100
otv vlan mapping 100 to 200

DC2:
interface Overlay1
otv extend-vlan 200

- C. DC1:
interface Overlay1
otv extend-vlan 100
- DC2:
interface Overlay2
otv extend-vlan 200
- D. DC1:
interface Overlay1
otv extend-vlan 100
- DC2:
interface Overlay1
otv extend-vlan 200

- A. Option A
 B. Option B
 C. Option C
 D. Option D

Answer: B

Explanation:

<https://www.cisco.com/c/en/us/support/docs/switches/nexus-7000-series-switches/200998-Nexus-7000-OTV-V>
<https://www.cisco.com/c/en/us/support/docs/switches/nexus-7000-series-switches/200998-Nexus-7000-OTV-V>

NEW QUESTION 225

A network architect wants to propose a scalable network monitoring solution in which data is repeatedly acquired from network devices. The solution must use a push model and provide close to realtime access to operational data. Which technology must be used to meet these requirements?

- A. streaming telemetry
 B. logging
 C. SNMPv3
 D. CLI-based scripting

Answer: A

Explanation:

<https://blogs.cisco.com/developer/its-time-to-move-away-from-snmp-and-cli-and-use-model-driven-telemetry>

Why Model-Driven Telemetry?

Model-Driven Telemetry is a new approach for network monitoring in which data is streamed from network devices continuously using a push model and provides near real-time access to operational statistics. You can precisely define what data you want to subscribe to using standard YANG models (YANG is a data modeling language used to model configuration and state data manipulated by the NETCONF protocol) with no CLI required. It allows network devices to continuously stream real time configuration and operating state information to subscribers. Structured data is published at a defined cadence, or on-change, based upon the subscription criteria and data type.

NEW QUESTION 226

Refer to the exhibit.



Which backup operation type does not include the Preserve Identities feature?

- A. logical configuration
 B. system configuration

- C. full state
- D. all configuration

Answer: C

Explanation:

This checkbox remains selected for All Configuration and System Configuration. Full State backup does not have Preserver Identity feature.

All configs, logical and system backups seem to allow “preserve identities”:

<https://books.google.pt/books?id=5VXUDwAAQBAJ&pg=PT699&lpg=PT699&dq=Preserve+Identities+feature+backup+ucs&source=bl&ots=daWxti4DV&sig=ACfU3U3X8UIPtS8EewzRIqTxqpyNVqOaNQ&hl=es419&sa=X&ved=2ahUKEwiYhtaxyMDqAhXFzIUKHXI8CzoQ6AEwC3oECAoQAQ#v=onepage&q=Preserve%20Identities%20feature%20backup%20ucs&f=false>

NEW QUESTION 227

An engineer needs to perform a backup of user roles and locales from Cisco UCS Manager to replicate the setting to a different fabric interconnect. The engineer wants to review the file before importing it to a target fabric interconnect. Which backup type must be selected to meet these requirements?

- A. all configuration
- B. system configuration
- C. logical configuration
- D. full state

Answer: B

Explanation:

https://www.cisco.com/c/en/us/td/docs/unified_computing/ucs/ucs-manager/GUI-User-Guides/Admin-Managem

- **System configuration**—An XML file that includes all system configuration settings such as **usernames, roles, and locales**. You can use the file generated from this backup to import these configuration settings to the original fabric interconnect or to a different fabric interconnect. You cannot use this file for a system restore.

NEW QUESTION 229

An engineer must perform an initial configuration of VXLAN Tunnel End-Point functionality on the Cisco Nexus 9000 Series platform. All the necessary features are already enabled on the switch. Which configuration set must be used to accomplish this goal?

- ☒ NX9K(config)# interface loopback0
NX9K(config-if)# ip address 10.10.10.11/32

NX9K(config)# interface overlay0
NX9K(config-if-overlay)# source-interface loopback0
- ☐ NX9K(config)# interface VLAN10
NX9K(config-if-nve)# source-interface loopback0
- ☐ NX9K(config)# interface loopback0
NX9K(config-if)# ip address 10.10.10.11/32

NX9K(config)# interface tunnel1
NX9K(config-if)# tunnel source loopback0

NX9K(config)# interface ethernet1/1
NX9K(config-if)# ip unnumbered loopback0
- ☐ NX9K(config)# interface loopback0
NX9K(config-if)# ip address 10.10.10.11/32

NX9K(config)# interface nve1
NX9K(config-if-nve)# source-interface loopback0

NX9K(config)# interface ethernet1/1
NX9K(config-if)# ip unnumbered loopback0
- ☐ NX9K(config)# interface loopback0
NX9K(config-if)# ip address 10.10.10.11/32

NX9K(config)# interface VLAN10
NX9K(config-if)# ip unnumbered loopback0

NX9K(config)# interface nve1
NX9K(config-if-nve)# source-interface loopback0

- A. Option A
- B. Option B
- C. Option C
- D. Option D

Answer: D

NEW QUESTION 230

A network architect must redesign a data center on OSPFv2. The network must perform fast reconvergence between directly connected switches. Which two actions must be taken to meet the requirement? (Choose two)

- A. Configure all links on AREA 0.
- B. Implement a virtual link between the switches.
- C. Use OSPF point-to-point links only.
- D. Set low OSPF hello and DEAD timers.
- E. Enable BFD for failure detection.

Answer: CD

NEW QUESTION 235

A Cisco Nexus 7000 Series switch runs VXLAN, and interface Ethernet 7/30 is configured as a trunk port. Which command set configures the switch to act as a gateway for VLAN 50?

```
interface Ethernet7/30 no switchport
no shutdown
service instance 1 vni no shutdown
```

- A. encapsulation profile VSI_50_TO_500 default
- B. encapsulation profile vni VSI_50_TO_500 dot1q 500 vni 50bridge-domain 500member vni 50 interface Vlan500ip address 10.50.50.51/24
- C. encapsulation profile vni VSI_50_TO_500 dot1q 500 vni 50bridge-domain 500member vni 50 interface Bdi500jp address 10.50.50.51/24
- D. encapsulation profile vni VSI_50_TO_500 dot1q 50 vni 500bridge-domain 50member vni 500 interface Bdi50ip address 10.50.50.51/24
- E. encapsulation profile vni VSI_50_TO_500 dot1q 50 vni 500bridge-domain 50member vni 500 interface Vlan50ip address 10.50.50.51/24

Answer: C

NEW QUESTION 238

A POAP-enabled Cisco Nexus switch will not enter POAP mode. Which two conditions should be verified? (Choose two.)

- A. Bootflash must contain a special directory named POAP with poap.py file.
- B. The switch is in bootup process.
- C. No startup configuration is available.
- D. The license file is missing on the switch.
- E. No Cisco NX-OS image is present on the bootflash.

Answer: BC

Explanation:

POAP is an automatic provisioning and zero-touch deployment feature that assists device owners in the initial deployment and configuration of Nexus switches. The feature works by checking for a local configuration script. If the script has been deleted, the switch has been reset to factory settings, or this is the first boot-up, the POAP daemon will connect to a preset list of servers to download an initial configuration file.

To perform this operation, the switch must first obtain an IP address from a local DHCP server. POAP configuration settings can also be passed through the DHCP response.

Which conditions should be verified, so they need to be TRUE. Like no startup (A) and bootup (B). C means that it needs to miss a license file and E means it needs to miss an NX-OS image.

NEW QUESTION 239

An engineer implements an ACI fabric and must implement microsegmentation of endpoints within the same IP subnet using a network-based attribute. The attribute mapping must allow IP subnet independence. Which attribute must be selected?

- A. MAC address
- B. Custom
- C. Tag
- D. IP

Answer: D

Explanation:

If you want to use a network-based attribute and classify IP addresses in the same subnet, you must use the MAC-based network attribute. IP-based microsegmented EPGs do not support classification for IP addresses in the same subnet.

https://www.cisco.com/c/en/us/td/docs/switches/datacenter/aci/apic/sw/3-x/virtualization/b_ACI_Virtualization_

NEW QUESTION 242

A Cisco UCS C-Series server is installed at a data center. The server should be managed by the Cisco UCS Manager by using a single cable for management and data traffic. Which configuration should be applied after the Physical connection is established?

- A. UCS-A# scope server 1 UCS-A /server# scope cimcUCS-A /server/cimc # scope mgmt-conn sidebandUCS-A /server/cimc # mgmt-conn-state enabled UCS-A /server/cimc/mgmt-conn* # commit-buffer
- B. UCS-A# scope chassis 1 UCS-A /chassis# scope cimcUCS-A /chassis/cimc # scope mgmt-conn sidebandUCS-A /chassis/cimc/mgmt-conn # mgmt-conn-state enabled UCS-A /chassis/cimc/mgmt-conn* # commit-buffer
- C. UCS-A# scope chassis 1 UCS-A /chassis# scope cimcUCS-A /chassis /cimc # set mgmt-conn-state enabled UCS-A /chassis /cimc/mgmt-conn* # commit-buffer
- D. UCS-A# scope server 1 UCS-A /server# scope cimcUCS-A /server/cimc # scope mgmt-conn sidebandUCS-A /server/cimc/mgmt-conn #set mgmt-conn-state enabled UCS-A /server/cimc/mgmt-conn* # commit-buffer

Answer: D

Explanation:

Example

UCS-A# scope server 1 UCS-A /server # scope cimc

UCS-A /server/cimc # scope mgm

UCS-A /server/cimc # scope mgmt-conn

UCS-A /server/cimc # scope mgmt-conn sideband

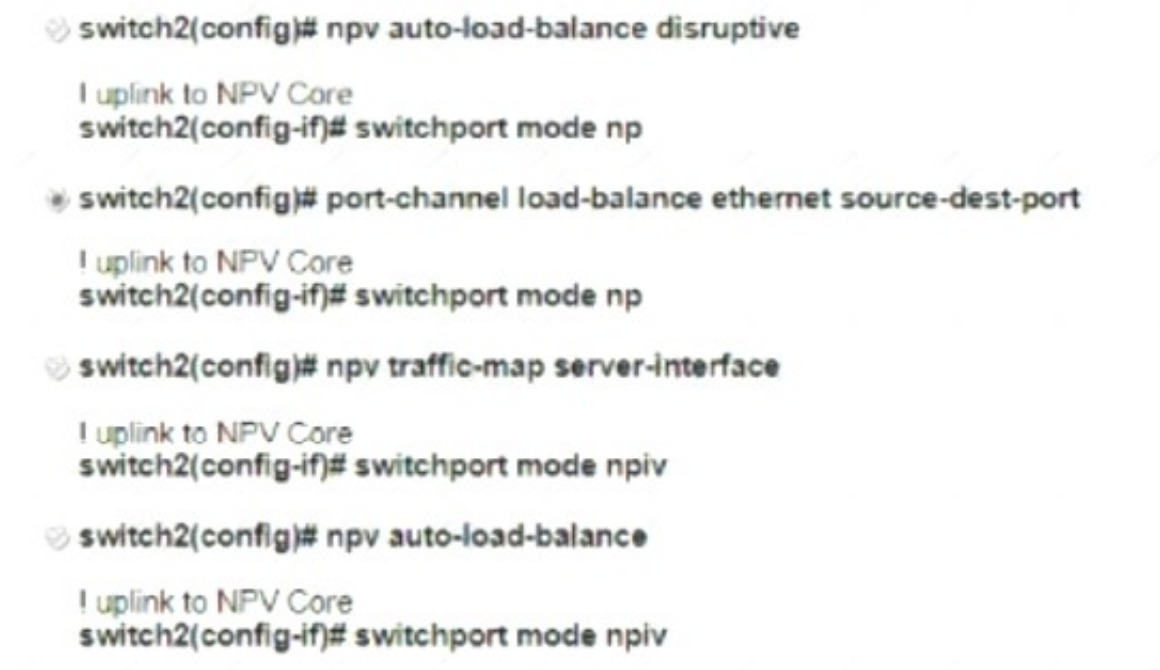
UCS-A /server/cimc/mgmt-conn # set mgmt-conn-state enabled UCS-A /server/cimc/mgmt-conn* # commit-buffer

UCS-A /server/cimc/mgmt-conn

https://www.cisco.com/c/en/us/td/docs/unified_computing/ucs/c-series_integration/ucsm3-1/b_C-Series-Integration_UCSM3-1/b_C-Series-Integration_UCSM3-1_chapter_010.html

NEW QUESTION 246

A customer data center experiences bandwidth contention that affects the servers connected to the NPV enabled switch. The NPV switch is connected to the NPIV switch using two 10 Gb uplinks, but the traffic originating from the connected hosts to the core switch exceeds the available bandwidth. The engineers decided to add a third uplink to the NPV server to increase the available bandwidth. Which set of commands must be used to provision the new uplink?

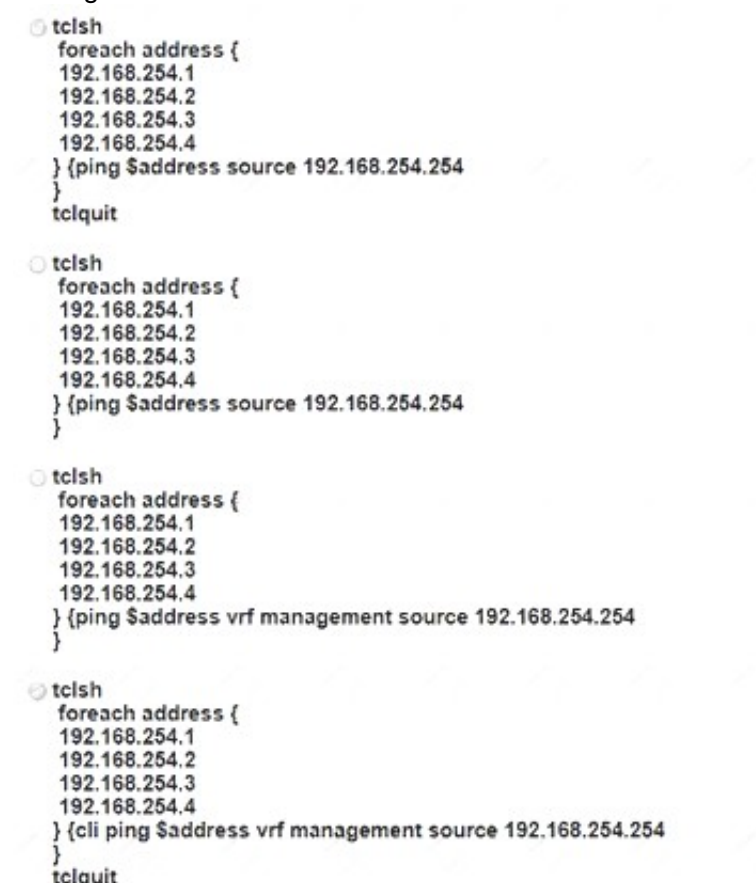


- A. Option A
- B. Option B
- C. Option C
- D. Option D

Answer: B

NEW QUESTION 248

A network engineer must create a script to quickly verify IP reachability for multiple hosts using ping from the Cisco NX-OS switches. The script should use the management VRF and exit the shell after execution. Which script should be used to achieve this objective?



- A. Option A
- B. Option B
- C. Option C
- D. Option D

Answer: D

NEW QUESTION 253

An engineer needs a utility to translate traditional Nexus CLI inputs and generate Python code using XML and JSON message formats. The solution needs to be available on a Nexus 7700 series switch. Which utility should be used?

- A. NX-OS JSON-RPC
- B. NX-API Sandbox
- C. Guest Shell for NX-OS
- D. Open NX-OS

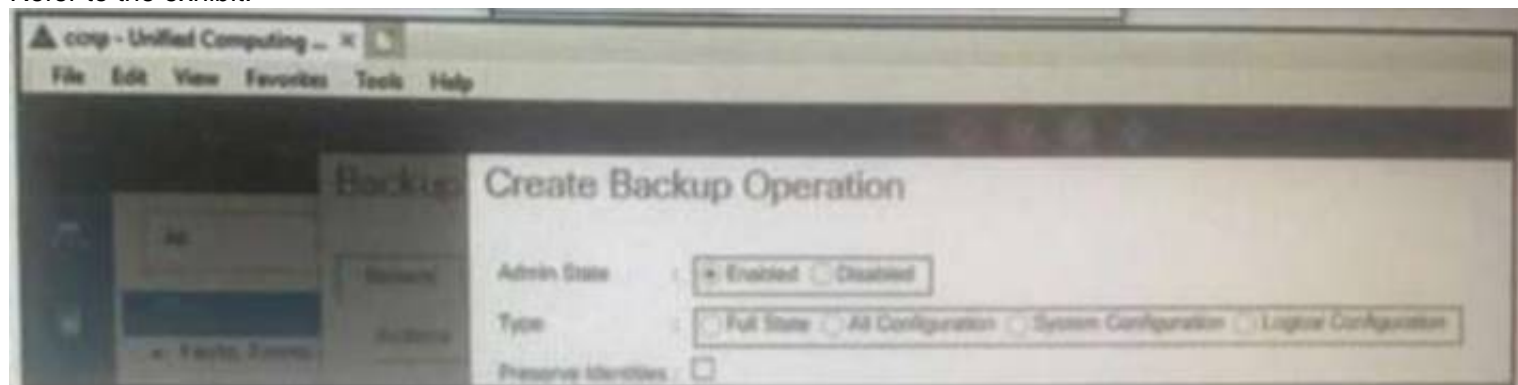
Answer: B

Explanation:

<https://developer.cisco.com/docs/nx-os/#!nx-api-cli-developer-sandbox>

NEW QUESTION 256

Refer to the exhibit.



Which backup operation type not include the preserve identities feature?

- A. Full state
- B. Logical configuration
- C. System configuration
- D. All configuration

Answer: A

NEW QUESTION 257

An engineer must allow communication between the APIC controller and an OpenStack OpFlex agent. The agent is running on a compute node directly plugged to a Cisco ACI leaf switch. The engineer must enable and extend Infra VLAN on the port facing the compute and extend the Infra VLAN to the host. Which action must be taken to meet these requirements?

- A. Enable the Infra VLAN on the Interface Profile policy
- B. Enable the Infra VLAN on the Attachable Access Entity Profile.
- C. Add the infra VLAN via the physical domain.
- D. Add the infra VLAN via the VMM domain.

Answer: C

NEW QUESTION 262

A customer has a requirement to deploy a cloud service and needs to have full control over the underlying OS, data and application. Which cloud model meets this requirement?

- A. PaaS
- B. MaaS
- C. IaaS
- D. SaaS

Answer: C

Explanation:

Traditional IT is responsible for Application, Data, Runtime, Middleware, OS, Virtualization, Servers, Storage, Networking. IaaS = Infrastructure as a Service - is responsible for OS, Virtualization, Servers, Storage, Networking. SaaS = Software as a Service - Software deployed by the cloud provider - is responsible for nothing. PaaS = Platform as a Service - Software can be deployed by the customer building their own application | is responsible for Data and Application.

NEW QUESTION 267

A network engineer must configure a Fibre Channel interface on the Cisco MDS 9000 Series Switch The configuration must meet these requirements

- The interface must be disabled when the bit errors threshold is exceeded
- Buffer-to-buffer credits must be set to the maximum value
- The interface must have full bandwidth allocated for its port group

Which command set configures a Fibre Channel interface that meets these requirements?

- A.

```
interface fc1/1
switchport bit-errors
switchport fcrxbbcredit 220 mode Fx
switchport rate-mode dedicated
```
- B.


```
interface fc1/1
switchport ignore bit-errors
switchport fcrxbbscredit 255 mode Fx
no switchport rate-mode
```

C.

```
interface fc1/1
no switchport ignore bit-errors
switchport fcrxbbscredit 255 mode Fx
switchport rate-mode dedicated
```

D.

```
interface fc1/1
no switchport bit-errors
switchport fcrxbbscredit 220 mode Fx
no switchport rate-mode
```

Answer: A

NEW QUESTION 270

An engineer is implementing OTV on a transport that supports multicast. The solution needs to meet the following requirements:

- Establish adjacency to the remote peer by using multicast.
- Enable OTV advertisements for VLAN 100 to the other site.

Which two commands should be configured to meet these requirements? (Choose two.)

- A. otv site-vlan 100
- B. otv data-group 232.2.2.0/28
- C. otv use-adjacency-server 172.27.255.94
- D. otv extend-vlan 100
- E. otv control-group 232.1.1.1

Answer: DE

Explanation:

https://www.cisco.com/c/dam/en/us/products/collateral/switches/nexus-7000-series-switches/guide_c07-728315

https://www.cisco.com/c/en/us/td/docs/switches/datacenter/sw/nx-os/OTV/config_guide/b_Cisco_Nexus_7000_

NEW QUESTION 272

An engineer configures a storage environment for a customer with high- security standards. The secure environment is configured in vsan 50. The customer wants to maintain a configuration and active databases and prevent unauthorized switches from joining the fabric. Additionally, the switches must prevent rogue devices from connecting to their ports by automatically learning the WWPNs of the ports connected to them for the first time. Which two configuration sets must be used to meet these requirements? (Chose two.)

- ☒

```
port-security enable
port-security activate vsan 50
```
- ☒

```
clear fabric-binding activate vsan 50
fabric-binding activate vsan 50
```
- ☐

```
fabric-binding activate vsan 50 force
```
- ☐

```
fcsp enable
fcsp auto-active
```
- ☐

```
fcsp dhchap hash md5 sha1
```

- A. Option A
- B. Option B
- C. Option C
- D. Option D
- E. Option E

Answer: AC

NEW QUESTION 277

An engineer must configure HTTPS secure management for Cisco UCS Manager using a key ring named kr2016 and a key size of 1024 bits. The environment consists of a primary fabric interconnect named UCS-A and a secondary fabric interconnect named UCS-B. Which command sequence must be used to accomplish this goal?

- ☐ UCS-B# scope security
 UCS-B /security # keyring kr2016
 UCS-B /security/keyring* # set mod mod1024
 UCS-A /security/keyring* # commit-buffer
- ☐ UCS-A# scope security
 UCS-A /security # create keyring kr2016
 UCS-A /security/keyring* # set modulus mod1024
 UCS-A /security/keyring* # commit-buffer
- ☐ UCS-B# scope security
 UCS-B /security # create keyring kr2016
 UCS-B /security/keyring* # set size mod1024
 UCS-A /security/keyring* # commit-buffer
- ☐ UCS-A# scope security
 UCS-A /security # keyring name kr2016
 UCS-A /security/keyring* # set size 1024
 UCS-A /security/keyring* # commit-buffer

- A. Option A
- B. Option B
- C. Option C
- D. Option D

Answer: B

Explanation:

https://www.cisco.com/en/US/docs/unified_computing/ucs/sw/cli/config/guide/1.4.1/CLI_Config_Guide_1_4_1

```
UCS-A# scope security
UCS-A /security # create keyring kr220
UCS-A /security/keyring* # set modulus mod1024
UCS-A /security/keyring* # commit-buffer
UCS-A /security/keyring #
```

NEW QUESTION 280

An engineer is performing an ISSU upgrade on the Cisco MDS 9000 Series Switch. What is the impact on the control plane of the switch?

- A. It remains down until the next reboot.
- B. It remains up throughout the update.
- C. It remains down for more than 80 seconds but less than 140 seconds.
- D. It is down for less than 80 seconds.

Answer: D

NEW QUESTION 285

Refer to the exhibit.

```
MDSSWITCH# config terminal
MDSSWITCH(config)# fcip profile 1
MDSSWITCH(config-profile)# ip address 192.0.1.10
MDSSWITCH(config-profile)# port 5000
MDSSWITCH(config-profile)# tcp max-bandwidth-mbps 5000
min-available-bandwidth-mbps 4000 round-trip-time-ms 1
MDSSWITCH(config-profile)# exit
MDSSWITCH(config)# interface fcip 1
MDSSWITCH(config-if)# use-profile 1
MDSSWITCH(config-if)# peer-info ipaddr 192.0.1.11
MDSSWITCH(config-if)# tcp-connections 1
MDSSWITCH(config-if)# ip-compression mode2
MDSSWITCH(config-if)# no shutdown
MDSSWITCH(config-if)# exit
MDSSWITCH(config)# interface ipStorage 1/1
MDSSWITCH(config-if)# ip address 192.0.1.10 255.255.255.0
MDSSWITCH(config-if)# switchport mtu 2500
MDSSWITCH(config-if)# no shutdown
MDSSWITCH(config-if)# end
```

An engineer configures FCIP on a Cisco MDS 9000 Series switch. What is the result of implementing the configuration?

- A. The switch attempts to make two TCP connections
- B. Compression is performed by using hardware
- C. Mode2 is enabled by default.
- D. Compression is performed by using software.

Answer: B

Explanation:

https://www.cisco.com/c/en/us/td/docs/switches/datacenter/mds9000/sw/8_x/config/ip_services/ipsvc/cfcip.html

NEW QUESTION 290

An engineer must perform a POAP deployment of a Cisco Nexus 9000 Series Switch. The switch must automatically receive its software image and configuration file upon power-on. Also, only UDP is permitted between the Nexus 9000 switch and the server that hosts the Cisco NX-OS system images. Which set of actions completes the configuration?

- A. Enable option 67. Define TFTP transfer protocol.
- B. Enable option 43. Define HTTP transfer protocol.
- C. Enable option 46. Define TFTP transfer protocol.
- D. Enable option 35. Define HTTP transfer protocol.

Answer: A

NEW QUESTION 294

A UCS B-Series server located in B5108 chassis 1 slot 1 is currently unavailable. The server needs to be associated with a specific service profile when it becomes available. Which associate service profile option should be selected to accomplish this goal?

- A. server pool
- B. server
- C. custom server
- D. restrict migration

Answer: C

Explanation:

https://www.cisco.com/en/US/docs/unified_computing/ucs/sw/gui/config/guide/141/UCSM_GUI_Configuration_Guide_141_chapter28.html

Text, application Description automatically generated with medium confidence

Associating a Service Profile with a Server or Server Pool

Follow this procedure if you did not associate the service profile with a blade server or server pool when you created it, or to change the blade server or server pool with which a service profile is associated.

Procedure

Step 1 In the Navigation pane, click the Servers tab.

Step 2 On the Servers tab, expand Servers > Service Profiles.

Step 3 Expand the node for the organization that contains the service profile that you want to associate with a new server or server pool.

If the system does not include multi-tenancy, expand the root node.

Step 4 Right-click the service profile you want to associate with a server and select Change Service Profile Association.

Step 5 In the Associate Service Profile dialog box, select one of the following options:

Option	Description
Server Pool	Select a server pool from the drop-down list. Cisco UCS Manager assigns a server from this pool to the service profile. Continue with Step 7.
Server	Navigate to the desired available server in the navigation tree and select the server which will be assigned to the service profile. Continue with Step 7.
Custom Server	Specifies the chassis and slot that contains the server that will be assigned to the service profile. If the server is not in the slot or is otherwise unavailable, the service profile will be associated with the server when it becomes available. Continue with Step 6.

Step 6 If you chose Custom Server, do the following:

- a. In the Chassis Id field, enter the number of the chassis where the selected server is located.
- b. In the Server Id field, enter the number of the slot where the selected server is located.

NEW QUESTION 297

An engineer must implement a solution that prevents untrusted DHCP servers from compromising the network. The feature must be configured on a Cisco Nexus 7000 Series Switch and applied to VLAN 10. The legitimate DHCP servers are connected to interface Ethernet 2/4. Which configuration set must be used to meet these requirements?

- ☐ n7k-1(config)# ip dhcp snooping vlan 10
n7k-1(config)# interface Ethernet2/4
n7k-1(config-if)# ip dhcp snooping trust
- ☒ n7k-1(config)# ip dhcp snooping vlan 10
n7k-1(config)# interface Ethernet2/4
n7k-1(config-if)# ip dhcp snooping verify vlan 10
- ☐ n7k-1(config)# ip dhcp snooping verify
n7k-1(config)# interface Ethernet2/4
n7k-1(config-if)# ip dhcp snooping verify vlan 10
- ☐ n7k-1(config)# ip dhcp snooping verify
n7k-1(config)# vlan configuration 10
n7k-1(config-vlan)# ip dhcp snooping trust

- A. Option A
B. Option B
C. Option C
D. Option D

Answer: A

NEW QUESTION 298

Which action must be performed before renumbering a Cisco UCS chassis?

- A. Move the chassis to new ports on fabric interconnect.
B. Re-acknowledge the chassis.
C. Decommission the chassis.
D. Run the shut and no shut command on the connected ports.

Answer: C

NEW QUESTION 303

Which NFS version uses the TCP protocol and needs only one IP port to run the service?

- A. NFSv1
B. NFSv2
C. NFSv3
D. NFSv4

Answer: D

NEW QUESTION 306

What is a benefit of using the Cisco UCS Lightweight upgrade feature?

- A. Security updates are scheduled with the next reboot of the fabric interconnects.
B. All servers are rebooted to push the latest updates.
C. The firmware version of a component is updated only when it has been modified.
D. A soft reboot is available for the fabric interconnects.

Answer: C

NEW QUESTION 309

Refer to the exhibit.

Create Boot Policy

Name

Description

Reboot on Boot Order Change
☐

Enforce vNIC/vHBA/iSCSI Name
☒

Boot Mode

Legacy
UEFI

WARNINGS:
The type (primary/secondary) does not indicate a boot order presence.
The effective order of boot devices within the same device class (LAN/Storage/iSCSI) is determined by PCIe bus scan order.
If **Enforce vNIC/vHBA/iSCSI Name** is selected and the vNIC/vHBA/iSCSI does not exist, a config error will be reported.
If it is not selected, the vNICs/vHBAs are selected if they exist, otherwise the vNIC/vHBA with the lowest PCIe bus scan order is used.

+ Local Devices
+ CIMC Mounted vMedia
+ vNICs
+ vHBAs
+ iSCSI vNICs
+ EFI Shell

Boot Order

+ - % Advanced Filter + Export Print

Name	Order	vNIC/vH	Type	LUN No	WWN	Slot No	Boot No
No data available							

Move Up Move Down Delete

An engineer installs a new Cisco UCS B-Series server. The requirement is to install an operating system on a LUN that is provided by the Fibre Channel storage array. Which two steps must be configured in the boot policy to accomplish this goal? (Choose two.)

- A. Disable Enforce vNIC/vHBA/iSCSI Name
- B. Add Local CD/DVD and SAN Boot.
- C. Configure a SAN Boot Target with a WWPN
- D. Set Boot Order to External USB and LAN Boot
- E. Create (SCSI VNICS and add Local LUN

Answer: AD

NEW QUESTION 311

An engineer must suggest a deployment model for a newly developed application. The engineer has a small starting budget and lacks technical knowledge and infrastructure to implement storage, operating system, and database services to support the application deployment. The engineer also needs usage data related to the service and the ability to elastically scale the deployment as customer demands grow. Which two models must be used to meet the requirements? (Choose two.)

- A. private cloud
- B. platform as a service
- C. software as a service
- D. infrastructure as a service
- E. public cloud

Answer: DE

NEW QUESTION 313

A network engineer is adding a Cisco HyperFlex data platform to the Cisco intersight management portal. Which two components are required for Intersight to claim the Cisco HyperFlex data platform? (Choose two.)

- A. device FQDN
- B. device public IP address
- C. device claim code
- D. device ID
- E. device serial number


Answer: CD

Explanation:

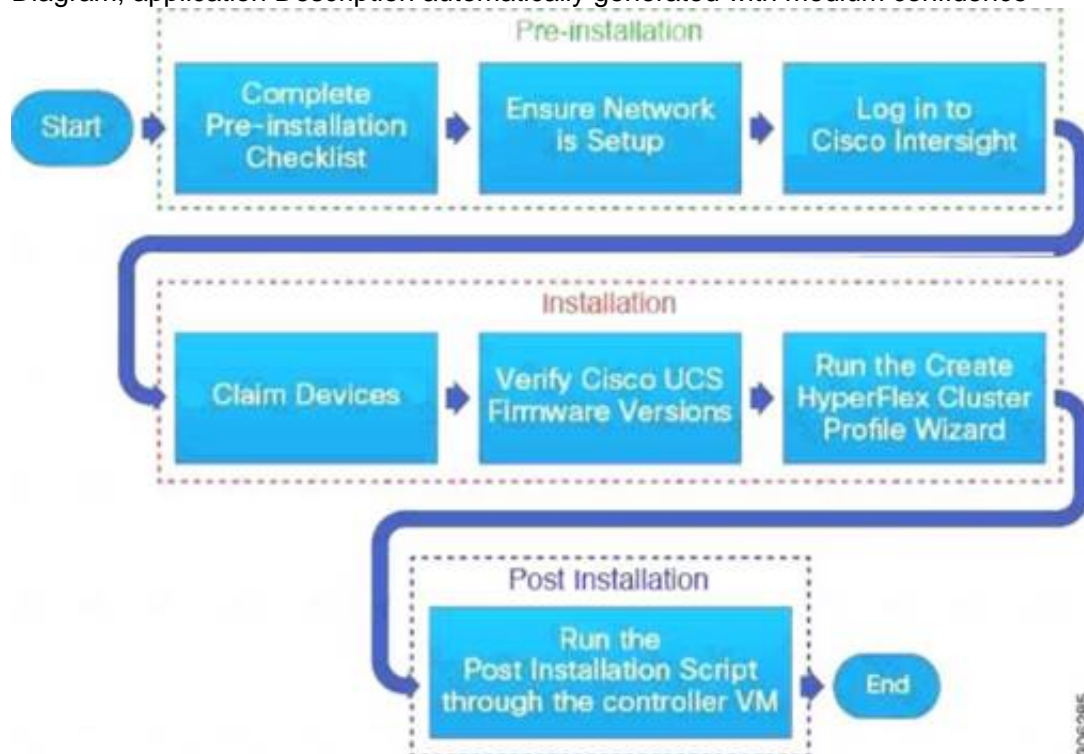
Text Description automatically generated

- Step 1** In the Cisco Intersight, left navigation pane, select **ADMIN > Targets**.
- Step 2** In the **Targets** details page, click **Claim a New Target**.
- Step 3** In the **Claim a New Target** wizard, select **Hyperconverged > Cisco HyperFlex Cluster** and complete the following fields:

- Note** You can locate the **Device ID** and the **Claim Code** information in:
- Cisco UCS Manager and Cisco IMC by navigating to **Admin > Device Connector**.
 - Cisco HyperFlex by navigating to **HyperFlex Connect UI > Settings > Device Connector**.
 - Cisco UCS Director by navigating to **Administration > Device Connector**.

UI Element	Essential Information
Device ID	<p>Enter the applicable Device ID.</p> <ul style="list-style-type: none"> For a UCS Domain, use the serial number of the primary and subordinate FIs, in this format: (Serial number of FI-A & Serial number of FI-B). Example: [SAL1924GKV6&SAL1913CJ7V] For a standalone server, use serial number. Example: NGTR12345 For HyperFlex, use Cluster UUID. Example: xxxxxxxx-xxxx-xxxx-xxxx-

Diagram, application Description automatically generated with medium confidence



https://www.cisco.com/c/en/us/td/docs/hyperconverged_systems/HyperFlex_HX_DataPlatformSoftware/HyperFlex_Installation_Guide_for_Intersight/b_HyperFlex_Installation_Guide_for_Intersight/b_HyperFlex_Installation_Guide_for_Intersight_chapter_011.html
<https://www.cisco.com/c/en/us/support/docs/hyperconverged-infrastructure/hyperflex-hx-dataplatform/214268-cisco-intersight-hyperflex-installatio.html>

NEW QUESTION 318

Which statement is true about upgrading the firmware on a Cisco MDS storage switch with dual supervisors?

- The standby supervisor must be offline before the firmware upgrade begins.
- Both supervisors load the new firmware and then the active supervisor reboots.
- Supervisors can be upgraded independently to test the new firmware.
- The new firmware is load on the standby supervisor first.

Answer: D

Explanation:

<https://www.cisco.com/c/en/us/support/docs/storage-networking/mds-9000-nx-os-san-os-software/118952-technote-mds9k-00.html#:~:text=On%20a%2095xx%20or%2097xx,becomes%20the%20new%20standby%20supervisor.>

NEW QUESTION 322

An engineer must apply AAA configuration on a Cisco MDS 9000 Series Switch. The solution must meet these conditions:

- It must use a challenge-response authentication protocol that uses MD5 hashing with an incrementally changing identifier
- The RADIUS configuration must t>e automatically shared with other MDS switches in the environment.

The RADIUS server is already defined. Which command set completes the configuration?

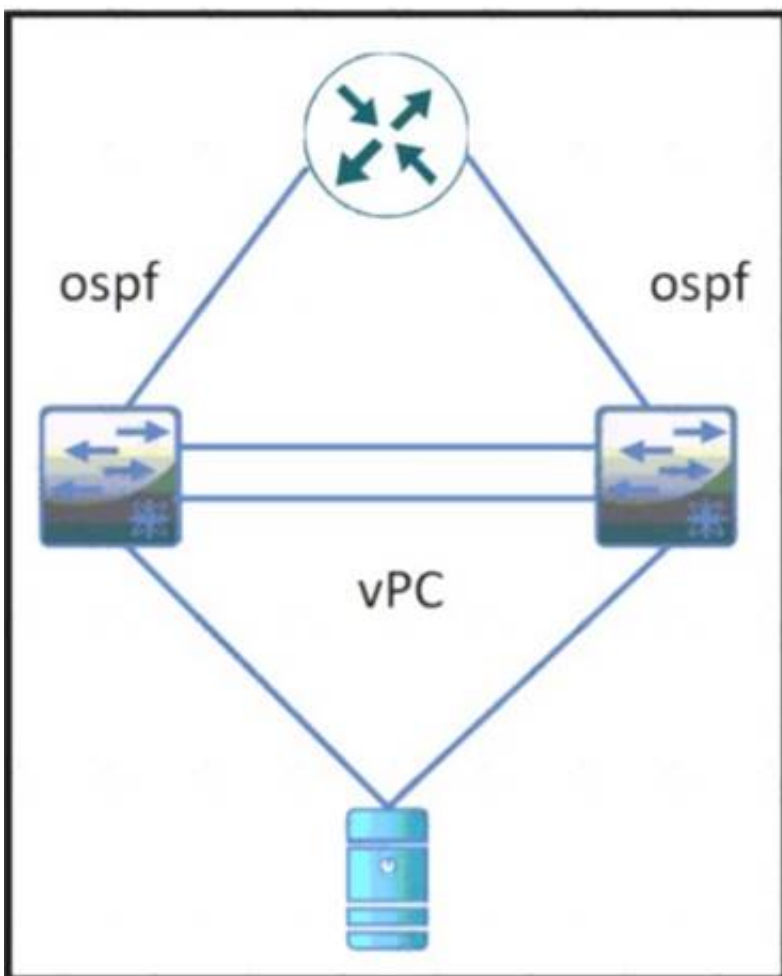
- ☐ aaa authentication login pap enable
 distribute radius
 radius-server host 10.8.8.0 auth-port 1821
- ☐ aaa authentication login mschapv2 enable
 radius propagate
 radius authentication port 1821
- ☐ aaa authentication login chap enable
 radius distribute
 radius commit
- ☐ aaa authentication login mschap enable
 radius commit
 radius-server host 10.8.8.0

- A. Option A
- B. Option B
- C. Option C
- D. Option D

Answer: C

NEW QUESTION 324

Refer to the exhibit



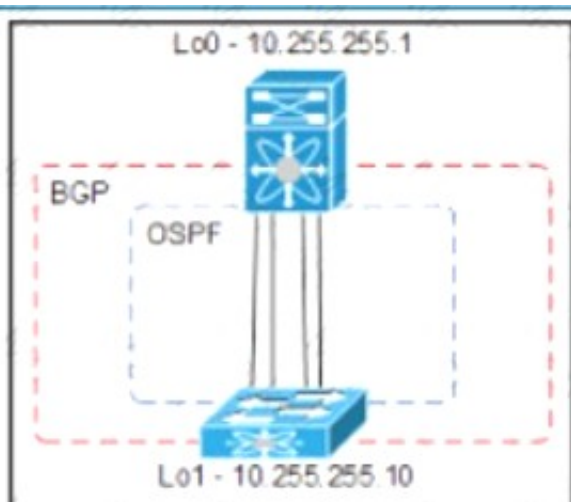
During a vPC peer switch reload, there is packet loss between the server and the router Which action must be taken to prevent this behavior during future reloads?

- A. Set the routed uplink ports of the Cisco Nexus peers as orphans.
- B. Increase the vPC delay restore timer.
- C. Decrease the OSPF hello and dead interval timers.
- D. Disable vPC ARP synchronize on the vPC peers.

Answer: B

NEW QUESTION 325

Refer to the exhibit



An engineer must provision a VXLAN deployment The OSPF has already been configured as the underlay protocol All BGP configurations will be performed using

the template method The deployment must meet these requirements

- > The local update source for leaf switches must be loopback 1
- > The router ID must be the local loopback IP address
- > The external BGP connections must use a template name

Drag and drop the configuration snippets from the bottom to complete the configuration

```

router bgp 65000
  router-id 
  template peer SPINE
  bfd
  remote-as 
  update-source loopback1
  timers 3 9
  address-family  peer
    send-community extended
  neighbor 
    peer SPINE
        
```

10.255.255.1

inherit

65000

10.255.255.10

12vpn

evpn

- A. Mastered
- B. Not Mastered

Answer: A

Explanation:

```

router bgp 65000
  router-id 10.255.255.10
  template peer SPINE
  bfd
  remote-as 65000
  update-source loopback1
  timers 3 9
  address-family 12vpn evpn
    send-community extended
  neighbor 10.255.255.1
    inherit peer SPINE
        
```

10.255.255.1

inherit

65000

10.255.255.10

12vpn

evpn

NEW QUESTION 326

An engineer must integrate Cisco ACI with a VMware vSphere environment. The requirement is to use a VMware Distributed Virtual Switch and to assign the encapsulation VLAN of the EPG from the VLAN pool. Which configuration set accomplishes this goa?

- A. Create a VMM domain association under the EPGs Create a VLAN pool with static allocated VLANs.
- B. Create a physical domain association under the EPGs Create a VLAN pool with static allocated VLANs.
- C. Create a physical domain association under the EPG
- D. Create a VLAN pool with oVnarmc allocated VLANs
- E. Create a VMM domain association under the EPGs Create a VLAN pool with dynamic allocated VLANs.

Answer: D

NEW QUESTION 328

Refer to the exhibit.

```
Step 20 Enter no (no is the default) if you are satisfied with the configuration.

The following configuration will be applied:

switchname CiscoMDS
interface mgmt0
  ip address 192.168.10.10
  subnetmask 255.255.255.0
  no shutdown
ip default-gateway 192.168.10.1
telnet server enable
no ssh server enable
no system default switchport shutdown
system default switchport trunk mode on
no zone default-zone permit vsan 1-4093
zoneset distribute full vsan 1-4093
Would you like to edit the configuration? (yes/no) [n]: no

Step 21 Enter yes (yes is default) to use and save this configuration.

Use this configuration and save it? (yes/no) [y]: yes
```

An engineer is configuring a Cisco MDS 9000 Series Switch for the first time. After the initial setup process, the name server at IP 192.168.10.11 is missing from the configuration. Which set of actions completes the configuration?

- A. Enter no at step 21 and reinitialize the install
- B. Press the Esc key to access ROMMON mode.
- C. Enter no at step 21 and reload the switch
- D. Configure the advanced IP options.
- E. Enter yes at step 21 to edit the configuration
- F. Add the line `dns-server 192.168.10.11`.
- G. Enter yes at step 21 and log in
- H. Modify the startup configuration DNS

Answer: B

NEW QUESTION 331

An engineer enters these commands while in EEM on a Cisco Nexus 9000 Series Switch. `event manager applet Backup-config`
`event timer watchdog time 1800`
`name timer`
`event cli match "copy running-config startup-config"`
What is the result of applying this configuration?

- A. It saves the running configuration every 1800 seconds.
- B. It generates an error because no action is mentioned.
- C. It executes the `copy running-config startup-config` command.
- D. It blocks the `copy running-config startup-config` command.

Answer: B

Explanation:

<https://www.cisco.com/c/en/us/td/docs/switches/datacenter/nexus9000/sw/93x/system-management/b-cisco-nex>
Graphical user interface, text, application, email Description automatically generated

Prerequisites for EEM

EEM has the following prerequisites:

- You must have network-admin user privileges to configure EEM.

Guidelines and Limitations for EEM

EEM has the following configuration guidelines and limitations:

- The maximum number of configurable EEM policies is 500.
- Action statements within your user policy or overriding policy should not negate each other or adversely affect the associated system policy.
- To allow a triggered event to process any default actions, you must configure the EEM policy to allow the default action. For example, if you match a CLI command in a match statement, you must add the event-default action statement to the EEM policy or EEM will not allow the CLI command to execute.
- When you configure an EEM policy action to collect `show tech` commands, make sure to allocate enough time for the `show tech` commands to complete before the same action is called again.

NEW QUESTION 336

A network engineer needs a tool to automate the provisioning of Cisco UCS Service Profiles. The administrator has limited programming knowledge but is skilled with scripting tools. The tool must include existing support for Cisco UCS configuration. Additionally, the administrator will eventually use the solution to manage Cisco UCS C-Series Rack Servers. Which tool meets these requirements?

- A. Cisco DCNM
- B. Python scripts
- C. PowerShell
- D. Bash scripts

Answer: C

NEW QUESTION 339

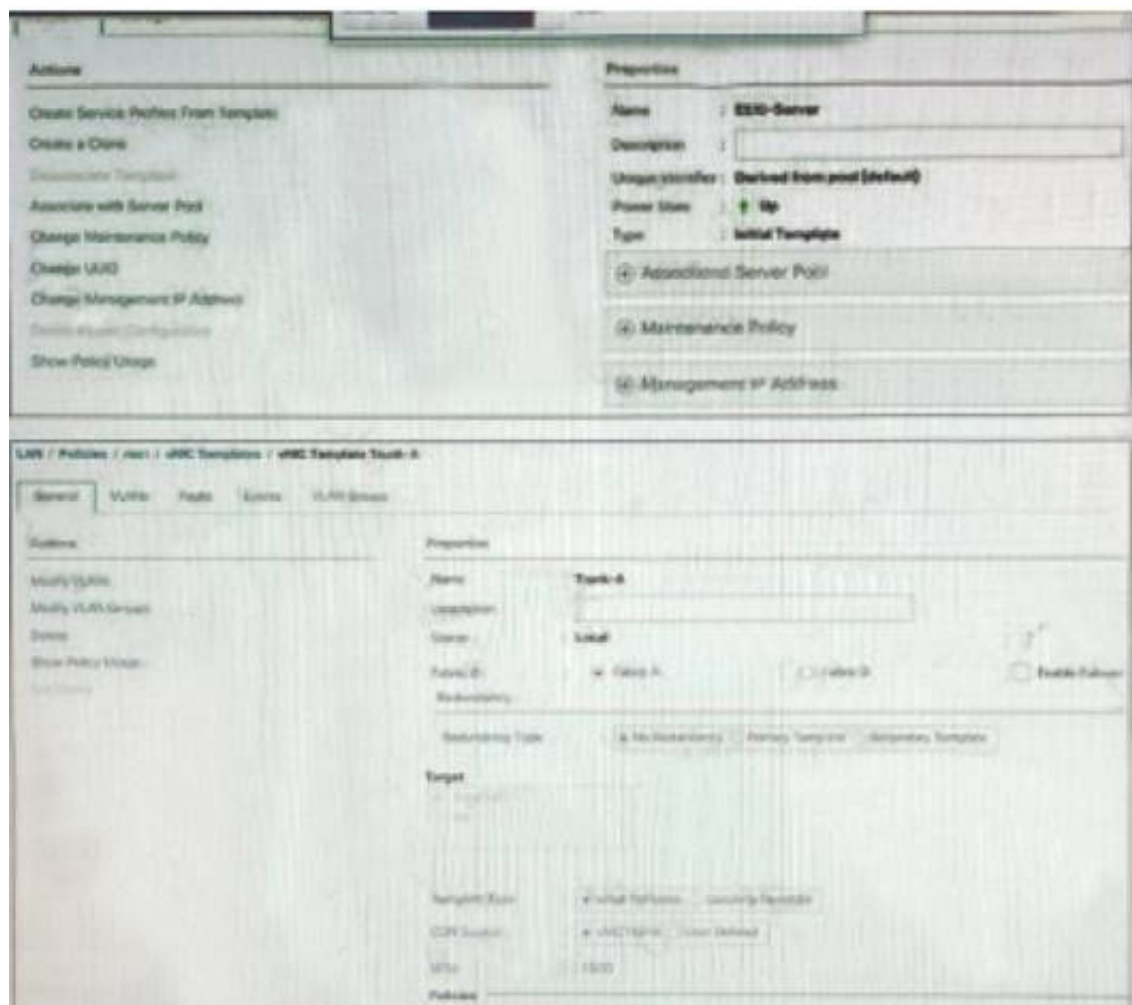
What is an advantage of using Ansible for automation as compared to puppet and chef?

- A. Ansible automates the enforcement of configuration settings.
- B. Ansible perform automation without installing a software agent on the target node.
- C. Ansible configures a set of CLI commands on a device by using NETCONF.
- D. Ansible abstracts a scenario so that set of configuration setting can be used across multiple operating systems.

Answer: B

NEW QUESTION 340

Refer to the exhibit.



Esxi-server is associated to the blade server. A VLAN added to trunk-a. the VLAN is missing on the vNIC of ESXI-server. Which action should be taken to add the VLAN to the cNIC?

- A. Change the template type of ESXI-Server to an updating template.
- B. Change the template type of Trunk-A to an updating template.
- C. Remove both template and recreate them as updating templates.
- D. Remove the VLAN from the Trunk-A template and add the VLAN again.

Answer: D

NEW QUESTION 344

A small remote office is set to connect to the regional hub site via NSSA ASBR. Which type of LSA is sent to the remote office OSPF area?

- A. type 7 LSA
- B. type 3 LSA
- C. type 1 LSA
- D. type 5 LSA

Answer: A

NEW QUESTION 345

An engineer must configure OSPFv2 connectivity between a pair of Cisco Nexus switches. The connection between the switches must meet these requirements:

- Use unicast for updates.
- Use decentralized communication of updates.
- Full adjacency between switches.

Which configuration is needed to meet these requirements?

- A. interface with a type of p2p network
- B. stub area between the neighbors
- C. filter list between the neighbors
- D. virtual link between the neighbors

Answer: A

NEW QUESTION 347

Due to a domain name change at a customer site, a Cisco UCS cluster must be renamed. An engineer must recommend a solution to ensure that the Cisco UCS Manager is available over HTTPS. Which action accomplishes this goal?

- A. Reinstall the cluster to generate the default key ring certificate
- B. Generate a new default key ring certificate from the Cisco UCS Manager
- C. Reboot the SSO component of the Cisco UCS Manager
- D. Regenerate the default key ring certificate manually

Answer: D

Explanation:

https://www.cisco.com/c/en/us/td/docs/unified_computing/ucs/ucs-manager/GUI-User-Guides/Admin-Managem

The default key ring certificate must be manually regenerated if the cluster name changes or the certificate expires.

NEW QUESTION 350

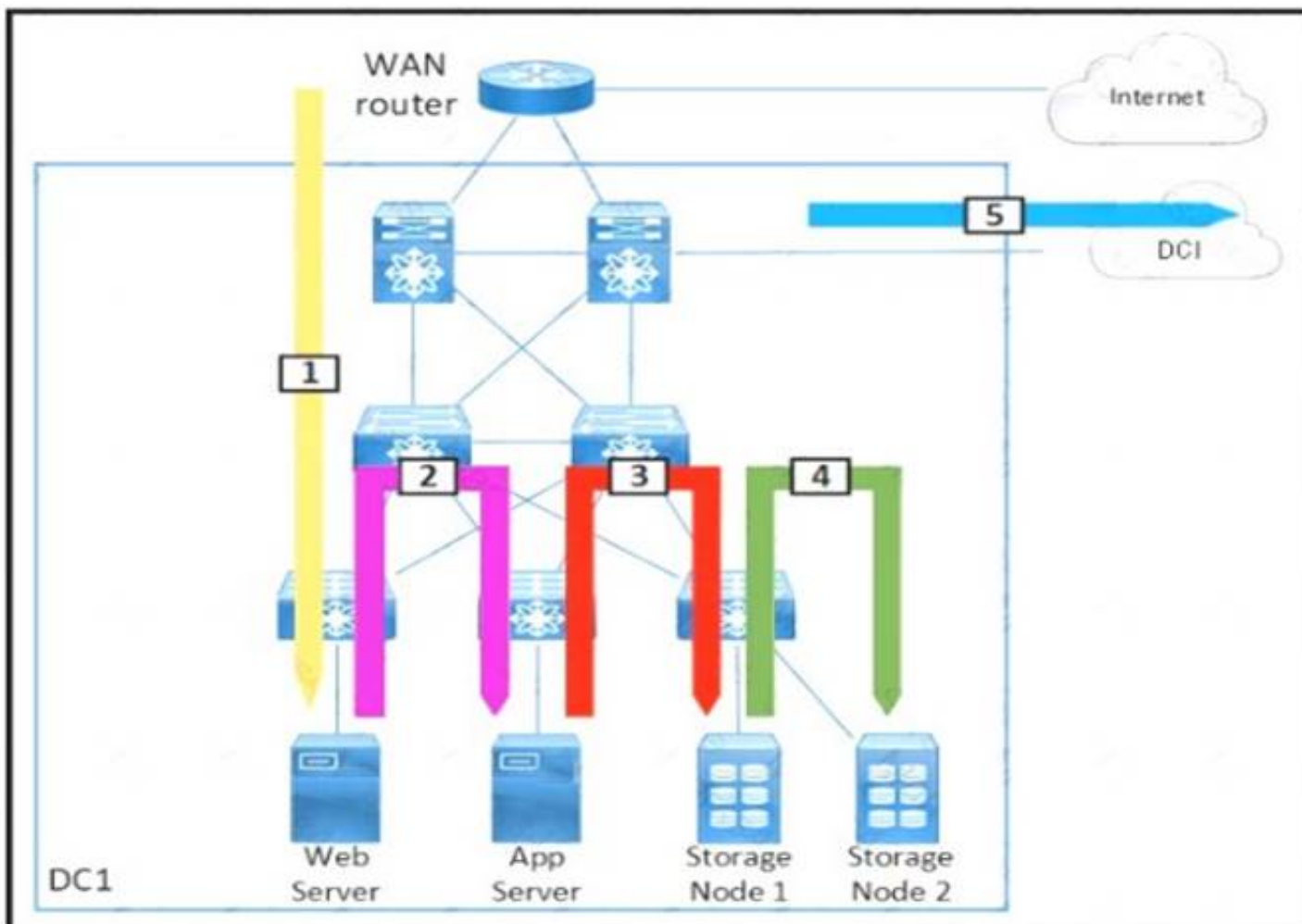
A bridge domain is being extended out of a Cisco ACI fabric. Between which of these components are policies used to identify the connectivity between Endpoint Groups and the external connection?

- A. an external bridge domain and an external routed domain
- B. internal contracts and external contracts
- C. internal EPGs and external EPGs
- D. L2Out and L3Out

Answer: D

NEW QUESTION 353

Refer to the exhibit.



Drag and drop each traffic flow type from the left onto the corresponding number on the right Not all traffic flow types are used

Inter-Data Center	1
East-West	2
North-West	3
North-South	4
South-West	5
Storage Traffic	
Storage Replication	

- A. Mastered
- B. Not Mastered

Answer: A

Explanation:
Table Description automatically generated

NEW QUESTION 356

Refer to the exhibit.

```
switch# show radius-server
Global RADIUS shared secret:*****
retransmission count:5
timeout value:10
following RADIUS servers are configured:
  myradius.cisco.users.com:
    available for authentication on port:1812
    available for accounting on port:1813
  172.22.91.37:
    available for authentication on port:1812
    available for accounting on port:1813
    RADIUS shared secret:*****
  10.10.0.0:
    available for authentication on port:1812
    available for accounting on port:1813
    RADIUS shared secret:*****

switch# show radius-server groups
total number of groups:4
following RADIUS server groups are configured:
  group radius:
    server: all configured radius servers
  group Group1:
    server: Server3 on auth-port 1812, acct-port 1813
    server: Server5 on auth-port 1812, acct-port 1813
  group Group5:
```

A network engineer requires remote access via SSH to a Cisco MDS 9000 Series Switch. The solution must support secure access using the local user database when the RADIUS servers are unreachable from the switches. Which command meets these requirements?

- A. aaa authentication none
- B. aaa authentication login default group radius
- C. aaa authentication login default group local
- D. aaa authentication login default fallback error local

Answer: D

Explanation:
https://www.cisco.com/c/en/us/td/docs/switches/datacenter/mds9000/sw/6_2/configuration/guides/security/nx-o

Configuring Fallback Mechanism for Authentication

You can enable/disable fallback to local database in case the remote authentication is set and all AAA servers are unreachable (authentication error). The fallback is set to local by default in case of an authentication error. You can disable this fallback for both console and ssh/telnet login. Disabling this fallback will tighten the security of authentication.

The following steps explain the fallback mechanism for authentication:

Step 1 By default fallback will be enabled for both default/console login. The "sh run aaa all" command can be used to verify this.

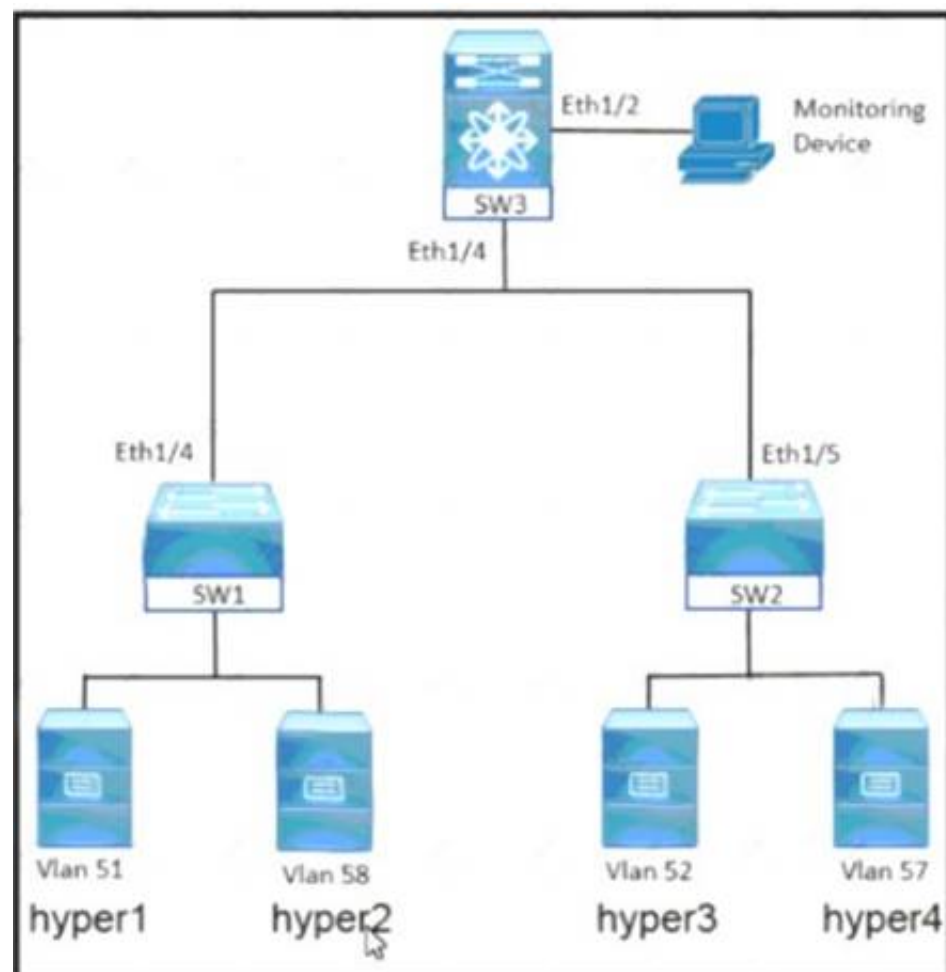
Step 2 Disabling fallback will print a warning message.

The CLI syntax and behavior is as follows:

	Command	Purpose
Step 1	switch# config t switch(config)#	Enters configuration mode.
Step 2	switch(config)# show run aaa all aaa authentication login default fallback error local aaa authentication login console fallback error local	Displays the default fallback behavior.
Step 3	switch(config)# no aaa authentication login default fallback error local WARNING!!! Disabling fallback can lock your switch.	Disables the fallback to local database for authentication. Note Replace default with console in this command to disable fallback to console.

NEW QUESTION 360

Refer to the exhibit.



An engineer must monitor the Ethernet port and the corresponding VLAN traffic for the hyper4 device. The SW3 device is a Cisco Nexus 7000 Series Switch. Drag and drop the code snippets from the right into the boxes in the configuration to meet these requirements.

```
!SW3 configuration

interface ethernet 1/2
  switchport

monitor session 2
  source interface
  destination interface
  source
```

vlan 57

ethernet 1/2

ethernet 1/4

monitor

interface vlan 57

- A. Mastered
- B. Not Mastered

Answer: A

Explanation:
Graphical user interface Description automatically generated

NEW QUESTION 365

An engineer must configure two Cisco Nexus 7000 series switches in the same data center to support OTV. Which command set completes the join interface configuration?

An engineer must configure two Cisco Nexus 7000 Series switches in the same data center to support OTV. Which command set completes the join interface configuration?

```
feature otv
otv site-identifier 256
interface overlay 1
otv control-group 239.1.1.1
otv data-group 239.1.1.0/29
otv join-interface ethernet 2/1
otv extend-vlan 5-10
no shutdown
```

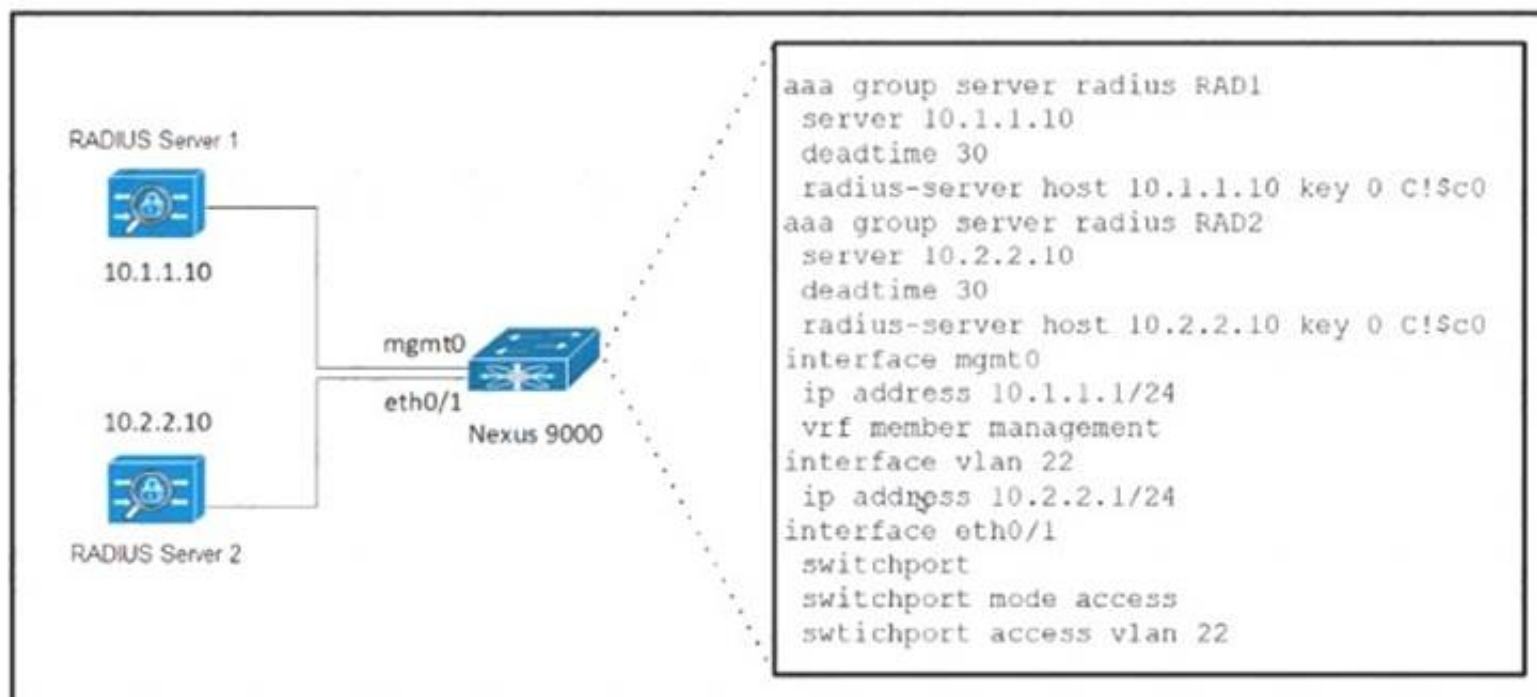
- ☒ Edge Device 1
interface ethernet 2/1
ip address 192.0.2.1/24
ip igmp version 3
- Edge Device 2
interface ethernet 2/1
ip address 192.0.2.16/24
ip igmp version 3
- ☐ Edge Device 1
interface ethernet 2/1
ip address 192.0.2.1/24
ip igmp version 3
ip pim sparse-mode
- Edge Device 2
interface ethernet 2/1
ip address 192.0.2.16/24
ip igmp version 3
ip pim sparse-mode
- ☐ Edge Device 1
interface ethernet 2/1
ip address 192.0.2.1/24
- Edge Device 2
interface ethernet 2/1
ip address 192.0.2.16/24
- ☐ Edge Device 1
interface ethernet 2/1
ip address 192.0.2.1/24
ip igmp version 3
- Edge Device 2
interface ethernet 2/1
ip address 192.0.2.1/24
ip igmp version 3

- A. Option A
 B. Option B
 C. Option C
 D. Option D

Answer: A

NEW QUESTION 368

Refer to the exhibit.



A user must be granted management access to the Cisco Nexus 9000 Series Switch using AAA servers. The RADIUS servers are configured to accept login requests from the same Layer 2 subnet of the switch. The user must be permitted to log in with these requirements:

- > RADIUS server 1 must be used to log in via a console.
- > RADIUS server 2 must be used to log in via SSH.

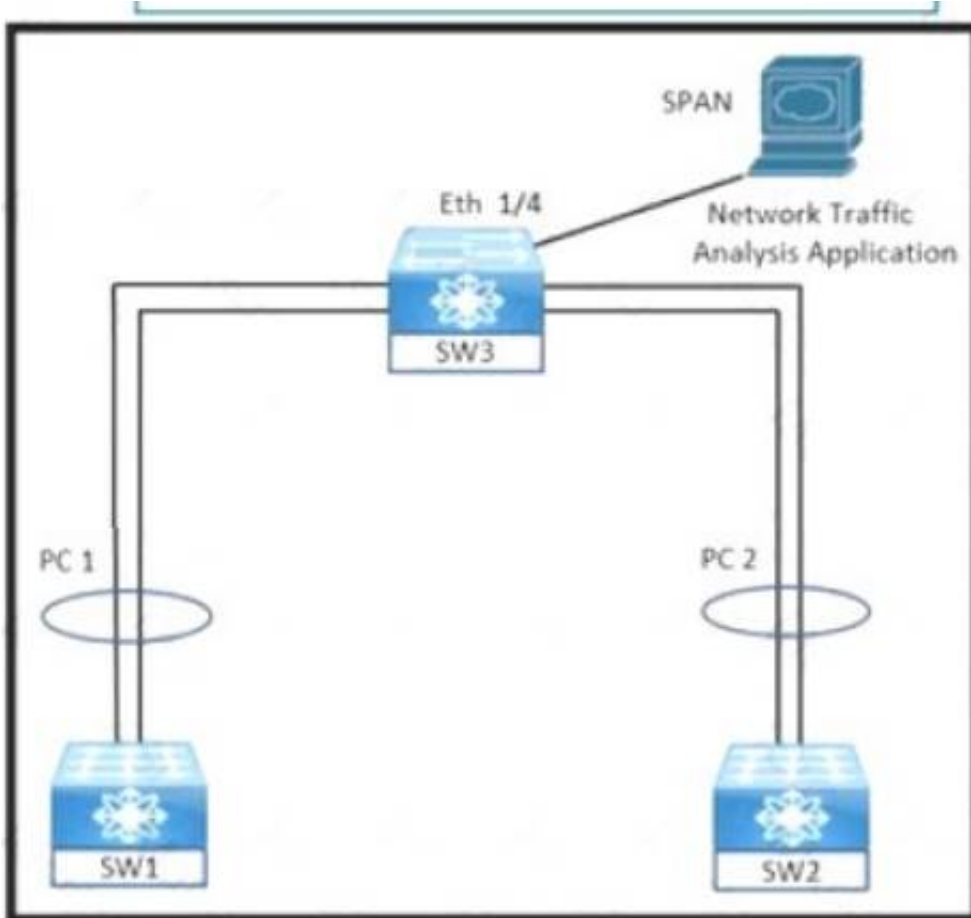
Which two actions meet these requirements?

- A. Enable command authorization to RAD1 and RAD2 for all successful logins.
- B. Change the dead timer for RAD1 and RAD2 to 1 minute.
- C. Set the RADIUS source interface to be mgmt0 for group RAD1 and VLAN 22 for group RAD2
- D. Configure the authentication login to use group RAD1 for console and group RAD2 for remote access.

Answer: AD

NEW QUESTION 369

Refer to the exhibit.



An engineer must monitor ingress traffic from SW1 and SW2 port-channel interfaces from SW3. Which configuration must be implemented to accomplish this goal?

A)

```
SW3# configure terminal
SW3(config)# source interface port-channel 1 rx
SW3(config)# source interface port-channel 2 tx

SW3(config)# interface ethernet 1/4
SW3(config-if)# destination interface ethernet 1/4
SW3(config-if)# exit

SW3(config)# interface Port-channel 1-2
SW3(config-if)# switchport monitor
SW3(config-if)# exit
```

B)

```
SW3# configure terminal
SW3(config)# monitor session 2
SW3(config-monitor)# source interface port-channel 1 tx
SW3(config-monitor)# source interface port-channel 2 tx

SW3(config)# interface Port-channel 1
SW3(config-if)# switchport monitor
SW3(config-if)# exit

SW3(config)# interface Port-channel 2
SW3(config-if)# switchport monitor
SW3(config-if)# exit
```

C)

```
SW3# configure terminal
SW3(config)# monitor session 2
SW3(config-monitor)# source interface port-channel 1 tx
SW3(config-monitor)# source interface port-channel 2 rx

SW3(config)# interface port-channel 1
SW3(config-if)# switchport monitor
SW3(config-if)# exit

SW3(config)# interface port-channel 2
SW3(config-if)# switchport monitor
SW3(config-if)# exit
```

D)

```
SW3# configure terminal
SW3(config)# monitor session 2
SW3(config-monitor)# source interface port-channel 1 rx
SW3(config-monitor)# source interface port-channel 2 rx

SW3(config)# interface ethernet 1/4
SW3(config-if)# switchport monitor
SW3(config-if)# exit

SW3(config)# monitor session 2
SW3(config-monitor)# destination interface ethernet 1/4
```


- A. Option A
- B. Option B
- C. Option C
- D. Option D

Answer: D

NEW QUESTION 374

A network engineer must implement RBAC on Cisco MDS 9000 Series Multilayer Switches.
Drag and drop the Cisco MDS 9000 Series roles from the left onto the correct categories on the right.

san-operator	System Defined
global-admin	
server-admin	
storage-admin	
network-admin	User Defined
network-operator	

- A. Mastered
- B. Not Mastered

Answer: A

Explanation:

Graphical user interface Description automatically generated with low confidence
[https://www.cisco.com/c/en/us/td/docs/unified_computing/ucs/ucs-manager/GUI-User-Guides/Admin Management/3-1/b_Cisco_UCS_Admin_Mgmt_Guide_3_1/b_UCSM_Admin_Mgmt_Guide_chapter_01.html](https://www.cisco.com/c/en/us/td/docs/unified_computing/ucs/ucs-manager/GUI-User-Guides/Admin%20Management/3-1/b_Cisco_UCS_Admin_Mgmt_Guide_3_1/b_UCSM_Admin_Mgmt_Guide_chapter_01.html)
https://www.cisco.com/c/en/us/td/docs/switches/datacenter/mds9000/sw/8_x/config/security/cisco_mds9000_security_config_guide_8x/configuring_users_and_common_roles.html#con_1422305

NEW QUESTION 376

.....

Thank You for Trying Our Product

We offer two products:

1st - We have Practice Tests Software with Actual Exam Questions

2nd - Questions and Answers in PDF Format

350-601 Practice Exam Features:

- * 350-601 Questions and Answers Updated Frequently
- * 350-601 Practice Questions Verified by Expert Senior Certified Staff
- * 350-601 Most Realistic Questions that Guarantee you a Pass on Your First Try
- * 350-601 Practice Test Questions in Multiple Choice Formats and Updates for 1 Year

100% Actual & Verified — Instant Download, Please Click
[Order The 350-601 Practice Test Here](#)