



Microsoft

Exam Questions PL-100

Microsoft Power Platform App Maker

About ExamBible

[Your Partner of IT Exam](#)

Found in 1998

ExamBible is a company specialized on providing high quality IT exam practice study materials, especially Cisco CCNA, CCDA, CCNP, CCIE, Checkpoint CCSE, CompTIA A+, Network+ certification practice exams and so on. We guarantee that the candidates will not only pass any IT exam at the first attempt but also get profound understanding about the certificates they have got. There are so many alike companies in this industry, however, ExamBible has its unique advantages that other companies could not achieve.

Our Advances

* 99.9% Uptime

All examinations will be up to date.

* 24/7 Quality Support

We will provide service round the clock.

* 100% Pass Rate

Our guarantee that you will pass the exam.

* Unique Gurantee

If you do not pass the exam at the first time, we will not only arrange FULL REFUND for you, but also provide you another exam of your claim, ABSOLUTELY FREE!

NEW QUESTION 1

- (Exam Topic 1)

You need to provide all app components of the application to Tailwind Traders. What should you do?

- A. Package the application and flow components into a single solution for export.
- B. Run the app checker and flow checker prior to publishing each component for export.
- C. Export each component separately but use the same version number for each component.
- D. Publish the application and flow solutions at the same time before exporting each one.

Answer: B

Explanation:

Scenario: When identifying versions of the app solution, all dependencies, entities, and user interfaces components must be identified to avoid any unintentional issues caused by reverting individual components to a previous version.

Power Apps has added components to the rule set that encourages best practices in the Power Apps Checker. You can check your canvas apps and flows that are included in solutions and then review all issues in a single, consolidated report.

Reference:

<https://docs.microsoft.com/en-us/power-platform-release-plan/2019wave2/microsoft-powerapps/checker-include>

NEW QUESTION 2

- (Exam Topic 1)

You need to provide the app to Tailwind Traders. What should you do?

- A. Within Managed Properties, set the value of the Allow customizations option to true
- B. Export the app as a managed solution.
- C. Use the Share App feature.
- D. Within Managed Properties, set the value of the Allow customizations option to false
- E. Export the app as a managed solution.
- F. Within Managed Properties, set the value of the Allow customizations option to false
- G. Export the app as an unmanaged solution.

Answer: C

Explanation:

Scenario: The completed app and all supporting components must be provided to Tailwind Traders. Tailwind Traders must not be able to make changes to any of the components.

Managed Solution: A managed solution is a finalized solution that can be distributed and installed. They are created by exporting an unmanaged solution by setting restrictions to prevent any further customizations. The whole point of Managed is locking down the Component states so they cannot be edited. Deleting the Managed Solution will remove all its customisations as well as data contained. Managed Solutions become read only once deployed so they cannot be manipulated.

Reference:

<https://powerusers.microsoft.com/t5/Power-Apps-Pro-Dev-ISV/Managed-vs-Unmanaged/td-p/495685>

NEW QUESTION 3

- (Exam Topic 2)

You need to implement the change requested by the operations manager. Which control should you use?

BF70D5D

- A. Camera
- B. Shape
- C. Add picture
- D. Image

Answer: D

Explanation:

Scenario: The operations manager asks that the time tracking app display the employee's photo once they have scanned their badge.

Image control in Power Apps is a control that shows an image from, for example, a local file or a data source. Reference:

<https://docs.microsoft.com/en-us/powerapps/maker/canvas-apps/controls/control-image>

NEW QUESTION 4

- (Exam Topic 2)

You need to create the solution assets.

What should you use to create the visualizations? To answer, select the appropriate options in the answer area.

NOTE: Each correct selection is worth one point.

Dashboard visualization	Tool
Sales	<div><div></div><div>Power BI Desktop only</div><div>Power BI Service only</div><div>Power BI Desktop or Power BI Service</div></div>
Manufacturing	<div><div></div><div>Power BI Desktop only</div><div>Power BI Service only</div><div>Power BI Desktop or Power BI Service</div></div>

- A. Mastered
- B. Not Mastered

Answer: A

Explanation:

Box 1: PowerBI Desktop
The Sales dashboard must reside in the Sales channel and must include information about active quotes, sales pipeline, and year-to-date sales KPIs for sales quotas by region.
PowerBI Desktop to support many data source. Box 2: PowerBI Desktop or Power BI Service on
A dashboard that shows a capacity Heat map by month as well as expected sales that are likely to close for the next month.
Both support visualizations. Reference:
<https://docs.microsoft.com/en-us/power-bi/fundamentals/service-service-vs-desktop>

NEW QUESTION 5

- (Exam Topic 2)
You need to meet the requirement for the time tracking app.
Which controls should you use? To answer, select the appropriate options in the answer area. NOTE: Each correct selection is worth one point.

Answer Area

Requirement	Solution
Automatically record the duration of work when a job number is read.	<div><div></div><div>Card</div><div>Rating</div><div>Slider</div><div>Timer</div></div>
Read the employee's number into the app.	<div><div></div><div>Barcode-scanner</div><div>Card</div><div>Image</div><div>Shape</div></div>
Display a photo of an employee when the employee badge is read.	<div><div></div><div>Camera</div><div>Card</div><div>Icon</div><div>Image</div></div>

- A. Mastered
- B. Not Mastered

Answer: A

Explanation:

Box 1: Timer
A Timer control in Power Apps is a control that can determine how your app responds after a certain amount of time passes.
Box 2: Barcode scanner
The Barcode scanner control for canvas apps scans barcodes, QR codes, and data-matrix codes on an Android or iOS device.
Box 3: Image
Image control in Power Apps is a control that shows an image from, for example, a local file or a data source. If you add one or more Image controls to your app, you can show individual images that aren't part of a data set, or you can incorporate images from records in data sources.
Reference:
<https://docs.microsoft.com/en-us/powerapps/maker/canvas-apps/controls/control-new-barcode-scanner> <https://docs.microsoft.com/en-us/powerapps/maker/canvas-apps/controls/control-image>

NEW QUESTION 6

- (Exam Topic 3)
 You are creating an app for an organization’s human resources (HR) department. You create an Employee entity in an unmanaged Common Data Service solution.
 Another user creates the following Power Automate flows separately from the solution:

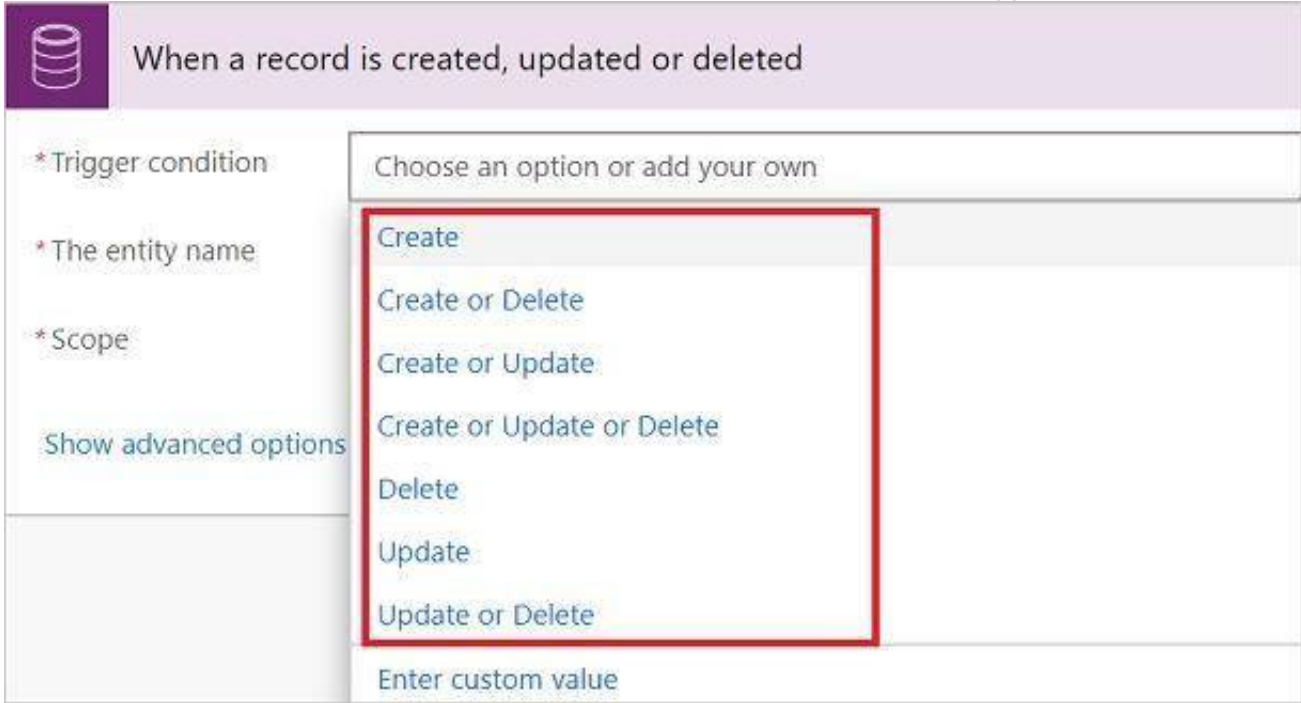
Flow	Description
FlowA	Send email to the HR manager when a new document is uploaded to Microsoft SharePoint.
FlowB	Send email to the HR manager after a user selects a document in Microsoft OneDrive for Business and runs the flow.
FlowC	Send email to the HR manager at 8 AM daily if new documents are uploaded in Microsoft OneDrive for Business since the previous day.
FlowD	Send email to the HR manager when a new employee record is added.

You need to incorporate the flows that can be added to the solution.
 Which two flows can you include? Each correct selection presents a complete solution.
 NOTE: Each correct selection is worth one point.

- A. FlowA
- B. FlowB
- C. FlowC
- D. FlowD

Answer: AD

Explanation:
 You can add any of these conditions to determine precisely when your flow is triggered.



Reference:
<https://docs.microsoft.com/en-us/power-automate/connection-cds-native>

NEW QUESTION 7

- (Exam Topic 3)
 You are creating a model-driven app that allows users to create and edit a list of existing accounts. You need to display a list of all active accounts.
 Which user interface components should you use?

- A. view
- B. gallery
- C. data table
- D. form

Answer: C

Explanation:
 Imagine that you have a collection of data (such as a list sales orders, a set of service tickets, or a directory of contacts), and that you want to show this data in your Microsoft PowerApps app in a tabular format, where each column represents a field and each row represents a record. In the past, you might have been able to roughly simulate this visualization, although the process required some effort. However, we’ve been listening to your requests and are happy to announce that you can now quickly and easily achieve this very typical visualization by using the new Data table control that has been recently added to PowerApps.
 Reference:
<https://powerapps.microsoft.com/fr-fr/blog/introducing-the-data-table-control/>

NEW QUESTION 8

- (Exam Topic 3)
 Note: This question is part of a series of questions that present the same scenario. Each question in the series contains a unique solution that might meet the stated goals. Some question sets might have more than one correct solution, while others might not have a correct solution.
 After you answer a question in this section, you will NOT be able to return to it. As a result, these questions will not appear in the review screen.
 You are creating a canvas app that displays a list of accounts.
 Users must be able to select an account and view details for the account. The app must include a feature that brings the user back to the list of accounts.
 You add a blank screen named Screen_Accounts and add a gallery named Gallery_Accounts to the screen. You set the data source of Gallery_Accounts to Accounts and add another blank screen named Screen_AccountDetail.
 You need to complete the app. Solution:

- Add a display form to Screen_AccountDetail.
- Set the OnSelect property of Gallery_Accounts to Navigate(Screen_AccountDetail).
- Set the data source of the form to Accounts.
- Set the Item property of the form to Selected.
- Add a back icon on Screen_AccountDetail and set its OnSelect property to Navigate(Screen_Accounts). Does the solution meet the goal?

- A. Yes
B. No

Answer: A

Explanation:

If you add a Display form control, the user can display all fields of a record or only the fields that you specify. Reference:
<https://docs.microsoft.com/en-us/powerapps/maker/canvas-apps/controls/control-form-detail>

NEW QUESTION 9

- (Exam Topic 3)

You create a canvas app.

A user is not able to determine which field currently has focus. You run App checker to identify errors. You need to verify that the focused border thickness is set to a value greater than zero.

Which section of the App checker results should you check?

- A. Rules
B. Performance
C. Accessibility
D. Runtime

Answer: C

Explanation:

The Accessibility checker classifies each issue as an error, a warning, or a tip based the issue's severity. Issues include:

- Focus isn't showing

When the FocusBorderThickness of a control is set to 0. It is good practice to ensure a proper color-contrast ratio between the focus border and the control itself so it's clearly visible.

Reference:

<https://docs.microsoft.com/en-us/powerapps/maker/canvas-apps/accessibility-checker>

NEW QUESTION 10

- (Exam Topic 3)

You are an app builder for a medical office. The medical office uses activities to book appointments and business process flows to track patient status. The cleaning staff wants the app to connect directly to a Microsoft Excel workbook to track cleaning tasks. The office does not have access to reporting tools including Power BI.

You need to create apps for the following groups of users. Apps must not require customizations or the use of additional products.

Groups	Comments	Requirements
Reception area staff	Users will access the app only from desktop devices in the office.	Users must be able to access contacts and display activities as a doughnut chart.
Medical staff	Users will access the app from tablet devices.	Users must be able to access activities and business process flows.
Cleaning staff	Users will access the app only from mobile phone devices.	Users must be able to interact with a checklist to mark cleaning tasks as completed.

Which type of app should you build for each group? To answer, drag the appropriate app types to the correct groups. Each app type may be used once, more than once, or not at all. You may need to drag the split bar between panes or scroll to view content.

NOTE: Each correct selection is worth one point.

App types

Canvas app

Model-driven app

Embedded canvas app

Answer Area

Group	App type
Reception area staff	App type
Medical staff	App type
Cleaning staff	App type

- A. Mastered
B. Not Mastered

Answer: A

Explanation:

Reference:

<https://docs.microsoft.com/en-us/powerapps/maker/model-driven-apps/embedded-canvas-app-guidelines> <https://global.hitachi-solutions.com/blog/canvas-vs-model-driven-apps>

NEW QUESTION 10

- (Exam Topic 3)

A company has a Common Data Service custom entity that stores customer account data. You need to create a relationship between the custom entity and the Account entity. Which two tools can you use? Each correct answer presents a complete solution.

NOTE: Each correct selection is worth one point.

- A. Power Platform Admin center
- B. Power Apps solution explorer
- C. Power Apps Maker portal
- D. SQL Server Management Studio
- E. Visual Studio Code

Answer: BC

Explanation:

There are two designers you can use to create and edit 1:N (one-to-many) or N:1 (many-to-one) relationships:

- > You can create and edit 1:N (one-to-many) or N:1 (many-to-one) entity relationships in Power Apps portal
- > You can create and edit create and edit 1:N (one-to-many) or N:1 (many-to-one) entity relationships using solution explorer

Reference:

<https://docs.microsoft.com/en-us/powerapps/maker/common-data-service/create-edit-1n-relationships>

NEW QUESTION 11

- (Exam Topic 3)

An administrator plans to create and deploy dashboards for use only by sales associates. The dashboards will display the current sales pipeline, open cases, recent major wins, and key opportunities by postal code. Sales associates must be able to act on the specific data displayed in dashboards.

You need to create the dashboards.

Which type of dashboards should you create? To answer, select the appropriate options in the answer area.

NOTE: Each correct selection is worth one point.

Answer Area

Requirement	Type of dashboard
Ensure that all sales associates can view the dashboard.	<div><div></div><div>User</div><div>System</div></div>
Ensure that sales associates can interact with data from the dashboards.	<div><div></div><div>Standard</div><div>Multi-stream</div><div>Single-stream</div></div>

- A. Mastered
- B. Not Mastered

Answer: A

Explanation:

Box 1: User

Type of dashboard: If you want your dashboards to be available across the organization and do not want to manage the access levels at a more detailed level, you might want to create an organization-owned dashboard. However, if you are concerned about the access privileges and security of your dashboard, consider creating a user-owned dashboard where you have more control on who can access it.

Box 2: Single-stream

The single-stream dashboards display real-time data over one stream based on an entity view or queue. The single-stream dashboards are typically helpful to Tier 2 service leads or managers, who monitor fewer, but more complex or escalated cases.

Reference:

<https://docs.microsoft.com/en-us/powerapps/developer/model-driven-apps/create-dashboard> <https://docs.microsoft.com/en-us/powerapps/maker/model-driven-apps/configure-interactive-experience-dashbo>

NEW QUESTION 12

- (Exam Topic 3)

Note: This question is part of a series of questions that present the same scenario. Each question in the series contains a unique solution that might meet the stated goals. Some question sets might have more than one correct solution, while others might not have a correct solution.

After you answer a question in this section, you will NOT be able to return to it. As a result, these questions will not appear in the review screen.

You build a canvas app for a manufacturing company. The company receives parts and materials from many vendors. You create a form to collect information from packing slips.

Receivers must be able to take a picture of packing slips to receive materials instead of manually entering data in the app.

You need to ensure that users can scan packing slip information into the form. Proposed solution: Use a Key Phrase Extraction model.

Does the solution meet the goal?

- A. Yes
- B. No

Answer: B

Explanation:

The key phrase extraction prebuilt model identifies the main points in a text document. Reference:

<https://docs.microsoft.com/en-us/ai-builder/prebuilt-key-phrase>

NEW QUESTION 14

- (Exam Topic 3)

You have the following Common Data Service entities: BusinessContracts and BusinessAccounts. You need to configure an N:N relationship between the two entities.

Which three actions should you perform in sequence? To answer, move the appropriate actions from the list of actions to the answer area and arrange them in the correct order.

Actions	Answer Area
Select Add relationship and then select the many-to-many relationship option.	
Select the BusinessAccounts entity as the related entity.	
Open the relationship tab of the BusinessContracts entity.	
Choose the Relationship Name and Relationship Entity Prefix.	

- A. Mastered
- B. Not Mastered

Answer: A

Explanation:

Step 1: Open the relationship tab of the BusinessContracts entity. View entity relationships

From the Power Apps portal, select either Model-driven or Canvas design mode. Select Data > Entities and select the entity that has the relationships you want to view. With the Relationships tab selected, you can select the following views:

Step 2: Select Add relationship.. Create relationships

While viewing entity relationships, in the command bar, select Add relationship and choose Many-to-many. Step 3: Select the BusinessAccounts entity as the related entity.

Reference:

<https://docs.microsoft.com/en-us/powerapps/maker/common-data-service/create-edit-nn-relationships-portal>

NEW QUESTION 17

- (Exam Topic 3)

Note: This question is part of a series of questions that present the same scenario. Each question in the series contains a unique solution that might meet the stated goals. Some question sets might have more than one correct solution, while others might not have a correct solution.

After you answer a question in this section, you will NOT be able to return to it. As a result, these questions will not appear in the review screen.

You build a canvas app for a manufacturing company. The company receives parts and materials from many vendors. You create a form to collect information from packing slips.

Receivers must be able to take a picture of packing slips to receive materials instead of manually entering data in the app.

You need to ensure that users can scan packing slip information into the form.

Proposed solution: Use a Category classification model. Does the solution meet the goal?

- A. Yes
- B. No

Answer: B

Explanation:

A Category classification model categorizes text by its meaning. Reference:

<https://knowledgefrommanish.com/powerplatform/ai-builder-entity-extraction-ai-model/>

NEW QUESTION 18

- (Exam Topic 3)

You create a canvas app for technicians at a computer store. You assign technicians cases to work on. The technicians update cases at the end of customer site visit.

The manager wants the technicians to sell warranties to the customers. If a customer agrees to purchase a warranty, technicians use the canvas app to immediately alert the sales team, and then the technician records details about the warranty into the app.

You need to create a flow to alert the sales team. Which type of trigger should you use?

- A. Flow button for mobile
- B. Power Apps
- C. Office 365 Outlook
- D. Common Data Service

Answer: A

Explanation:

Create a button flow to run routine tasks by simply tapping a button. Customize your flow by allowing the user to provide specific details that will be used when the flow runs.

Note: There are many repetitive tasks that we all wish we could run with just a tap of a button. For example, you may need to quickly email your team to remind them to join the daily team sync, or you may want to start a new Visual Studio Codespaces build of your code base after you've been notified that there are no more checkins planned for the day. Button flows allow you to accomplish these and many other tasks simply by tapping a button on your mobile device.

Reference:

<https://docs.microsoft.com/en-us/power-automate/button-flow-with-user-input-tokens>

NEW QUESTION 21

- (Exam Topic 3)

Note: This question is part of a series of questions that present the same scenario. Each question in the series contains a unique solution that might meet the stated goals. Some question sets might have more than one correct solution, while others might not have a correct solution.

After you answer a question in this section, you will NOT be able to return to it. As a result, these questions will not appear in the review screen.

You build a canvas app for a manufacturing company. The company receives parts and materials from many vendors. You create a form to collect information from packing slips.

Receivers must be able to take a picture of packing slips to receive materials instead of manually entering data in the app.

You need to ensure that users can scan packing slip information into the form. Proposed solution: Use an Entity Extraction model.

Does the solution meet the goal?

A. Yes

B. No

Answer: A

Explanation:

AI Builder entity extraction models recognize specific data in the text that you target based on your business needs.

The model identifies key elements in the text and then classifies them into predefined categories. This can help you transform unstructured data into structured data that's machine-readable. You can then apply processing to retrieve information, extract facts, and answer questions.

Note: Create a canvas app and add the text recognizer AI Builder component to your screen. This component takes a photo or loads an image from the local device, and then processes it to detect and extract text based on the text recognition prebuilt model. If it detects text in the image, the component outputs the text and identifies the instances by showing a rectangle for each instance in the image.

Reference:

<https://knowledgefrommanish.com/powerplatform/ai-builder-entity-extraction-ai-model/> <https://docs.microsoft.com/en-us/ai-builder/prebuilt-text-recognizer-component-in-powerapps>

NEW QUESTION 22

- (Exam Topic 3)

You are an app maker.

You want to create apps and track customizations as part of the default solution. You need to determine the impact of performing the work in the default solution.

What should you conclude?

A. The default solution does not contain all components and customizations from all solutions in the environment.

B. The prefix used when creating components as part of the default solution can be set to a specific value.

C. The default solution cannot be exported and distributed to another environment.

Answer: C

Explanation:

Default Solution. This is a special solution that contains all components in the system. The default solution is useful for discovering all the components and configurations in your system.

Why you shouldn't use the default solutions to manage customizations

There are a few reasons why you shouldn't create apps and make customizations in either of the default solutions:

➤ The default solution can't be exported; therefore, you can't distribute the default solution to another environment.

The default solution contains all components and customizations from all solutions in the environment.

By default, all enabled users can create apps and customize components in the Common Data Services Default Solution.

It's difficult to locate or identify the customizations you've made in the environment by using either default solution.

When you use either default solution to create components, you'll also use the default publisher assigned to the solution. This often results in the wrong publisher prefix being applied to some components.

Reference:

<https://docs.microsoft.com/en-us/power-platform/alm/use-solutions-for-your-customizations>

NEW QUESTION 27

- (Exam Topic 3)

You create a model-driven app for a company. The app will be used to manage events that the company organizes.

The Events entity ownership type is set to User or team. Members of the marketing team are assigned the MarketingTeam security role. All privileges for the role are set to User access.

All employees must be able to view event records. Only members of the marketing team are permitted to create or edit event records. You create a role named OtherEmployees.

You need to configure the MarketingTeam and OtherEmployees security roles.

Which three actions should you perform? Each correct selection presents a part of the solution.

NOTE: Each correct selection is worth one point.

A. Set the access level for the OtherEmployees security role to Organization for the Read permission.

B. Set the access level for the MarketingTeam security role to Organization for the Read permission.

C. Set the access level for the OtherEmployees security role to None Selected for the Read permission.

D. Set the access level for the MarketingTeam security role to None Selected for the Read permission.

E. Set the access level for the MarketingTeam security role to None Selected for the Create and Write permission.

F. Set the access level for the OtherEmployees security role to None Selected for the Create and Write permission.

Answer: ABE

NEW QUESTION 29

- (Exam Topic 3)

You create a Power Platform solution. Solution data is stored in a variety of documented cloud services. You must also be able to connect to one or more industry data sources.

You need to configure the data sources. What should you do?

- A. Create a business process flow.
- B. Create a data policy template.
- C. Create a UI flow.
- D. Use an existing data connector.

Answer: D

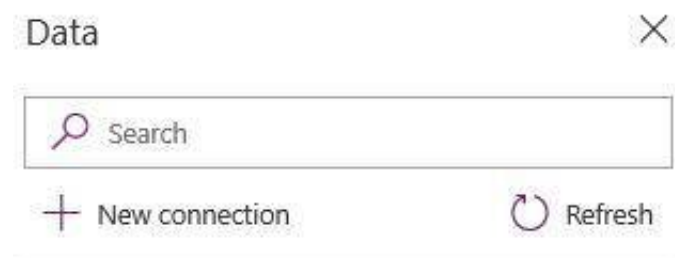
Explanation:

In Power Apps, add a data connection to an existing canvas app or to an app that you're building from scratch. Your app can connect to SharePoint, Common Data Service, Salesforce, OneDrive, or many other data sources.

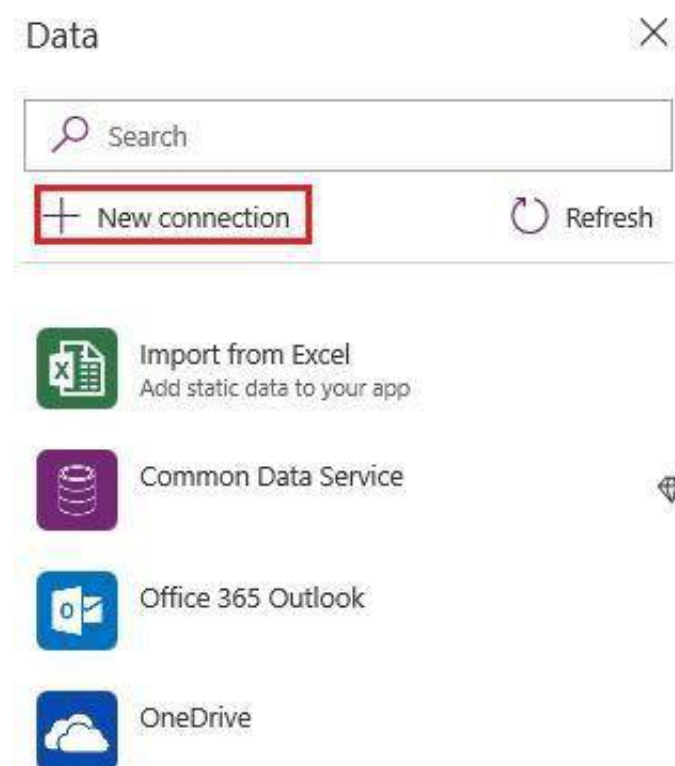
Note:

Add data source

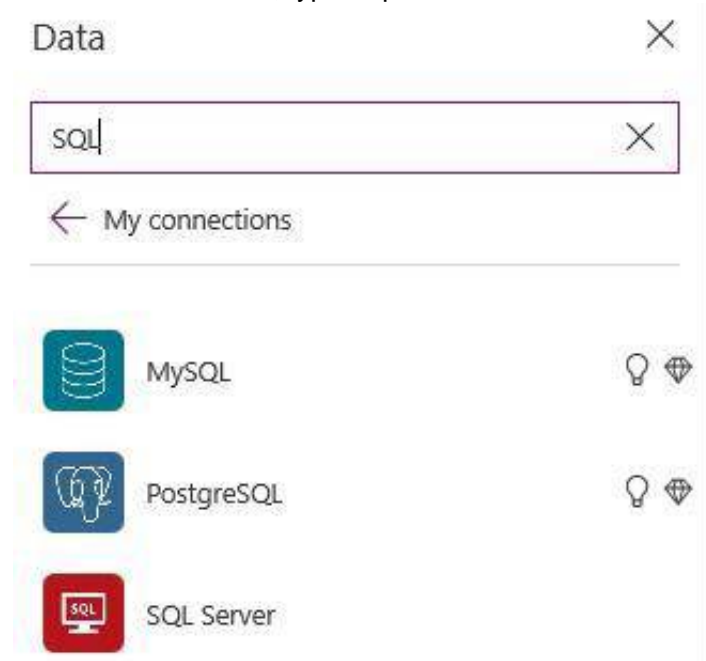
- * 1. In the center pane, select connect to data to open the Data pane.
- * 2. Select Add data source.
- * 3. If the list of connections includes the one that you want, select it to add it to the app. Otherwise, skip to the next step.



- * 4. Select New connection to display a list of connections.



- * 5. In the search bar, type or paste the first few letters of the connection you want, and then select the connection when it appears.



- * 6. Select Create to both create the connection and add it to your app. Reference:

<https://docs.microsoft.com/en-us/powerapps/maker/canvas-apps/add-data-connection>

NEW QUESTION 30

.....

Relate Links

100% Pass Your PL-100 Exam with ExamBible Prep Materials

<https://www.exambible.com/PL-100-exam/>

Contact us

We are proud of our high-quality customer service, which serves you around the clock 24/7.

Viste - <https://www.exambible.com/>