

Cisco

Exam Questions 350-501

Implementing and Operating Cisco Service Provider Network Core Technologies



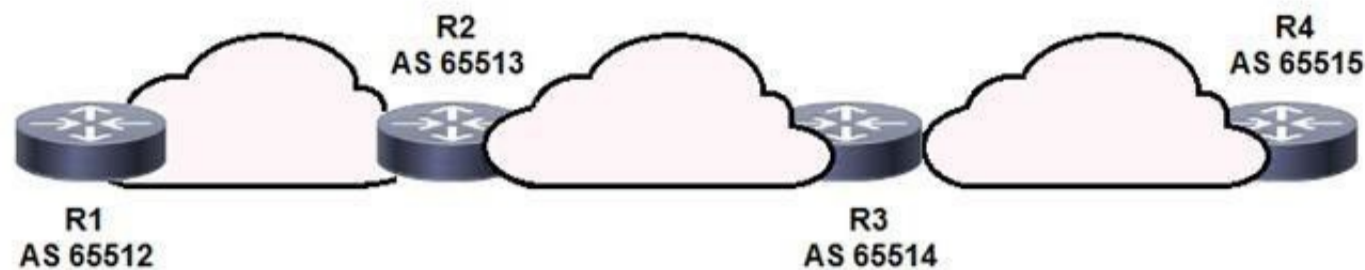
NEW QUESTION 1

Why do Cisco MPLS TE tunnels require a link-state routing protocol?

- A. The link-state database provides segmentation by area, which improves the path-selection process.
- B. The link-state database provides a data repository from which the tunnel endpoints can dynamically select a source ID.
- C. Link-state routing protocols use SPF calculations that the tunnel endpoints leverage to implement the tunnel.
- D. The tunnel endpoints use the link-state database to evaluate the entire topology and determine the best path.

Answer: D

NEW QUESTION 2



Refer to the exhibit. BGPsec is implemented on R1, R2, R3, and R4. BGP peering is established between neighboring autonomous systems. Which statement about implementation is true?

- A. BGP updates from the iBGP peers are appended with a community of local-as.
- B. BGP updates from the all BGP peers are appended with a community of no-export.
- C. BGP updates from the eBGP peers are appended with an additional AS path value that is statically set by the domain administrator.
- D. BGP updates from the eBGP peers are appended with a BGPsec attribute sequence that includes a public key hash and digital signature.

Answer: D

NEW QUESTION 3

You are configuring MPLS traffic-engineering tunnels in the core. Which two ways exist for the tunnel path across the core? (Choose two.)

- A. The dynamic path option is supported only with IS-IS.
- B. Tunnels can be configured with dynamic path or explicitly defined path.
- C. A zero bandwidth tunnel is not a valid option.
- D. The bandwidth statement creates a "hard" reservation on the link.
- E. Tunnel links inherit IGP metrics by default unless overridden.

Answer: BE

NEW QUESTION 4

Which configuration mode do you use to apply the mpls ldp graceful-restart command in IOS XE Software?

- A. MPLS LDP neighbor
- B. interface
- C. MPLS
- D. global

Answer: D

NEW QUESTION 5

After you analyze your network environment, you decide to implement a full separation model for Internet access and MPLS L3VPN services. For which reason do you make this decision?

- A. It enables EGP and IGP to operate independently.
- B. It enables you to choose whether to separate or centralize each individual service.
- C. It is easier to manage a system in which services are mixed.
- D. It requires only one edge router.

Answer: A

NEW QUESTION 6

Which statement about the Cisco MPLS TE forwarding adjacency feature is true?

- A. It enables the MPLS core to use EIGRP as the routing protocol.
- B. It enables the Cisco MPLS TE tunnel to be advertised into the running IGP.
- C. It enables the tailend router to advertise routes to the headend router over the tunnel.
- D. It enables the headend and tailend routers to establish a bidirectional tunnel.

Answer: B

NEW QUESTION 7

While implementing TTL security, you issue the PE(config-router-af)#neighbor 2.2.2.2 ttl-security hops 2 command.

After you issue this command, which BGP packets does the PE accept?

- A. to 2.2.2.2, with a TTL of 2 or more
- B. from 2.2.2.2, with a TTL of less than 2
- C. to 2.2.2.2, with a TTL of less than 253
- D. from 2.2.2.2, with a TTL of 253 or more

Answer: D

NEW QUESTION 8

Refer to the exhibit. R1 is connected to two service providers and is under a DDoS attack.
Which statement about this design is true if URPF in strict mode is configured on both interfaces?

- A. R1 drops all traffic that ingresses either interface that has a FIB entry that exits a different interface.
- B. R1 drops destination addresses that are routed to a null interface on the router.
- C. R1 permits asymmetric routing as long as the AS-PATH attribute entry matches the connected AS.
- D. R1 accepts source addresses on interface gigabitethernet0/1 that are private addresses.

Answer: A

NEW QUESTION 9

```
ip cef
interface gigabitethernet0/1
 ip verify unicast source reachable-via any
```

Refer to the exhibit. Router 1 was experiencing a DDoS attack that was traced to interface gigabitethernet0/1. Which statement about this configuration is true?

- A. Router 1 accepts all traffic that ingresses and egresses interface gigabitethernet0/1.
- B. Router 1 drops all traffic that ingresses interface gigabitethernet0/1 that has a FIB entry that exits a different interface.
- C. Router 1 accepts source addresses that have a match in the FIB that indicates it is reachable through a real interface.
- D. Router 1 accepts source addresses on interface gigabitethernet0/1 that are private addresses.

Answer: C

NEW QUESTION 10

Which additional feature does MPLS DiffServ tunneling support?

- A. matching EXP and DSCP values
- B. PHB layer management
- C. using GRE tunnels to hide markings
- D. interaction between MPLS and IGP

Answer: B

NEW QUESTION 10

An engineer is setting up overlapping VPNs to allow VRF ABC and XYZ to communicate with VRF CENTRAL but wants to make sure that VRF ABC and XYZ cannot communicate. Which configuration accomplishes these objectives?

- A.
- ```
vrf ABC
 address-family ipv4 unicast
 import route-target
 65000:1111
 65000:4444
 !
 export route-target
 65000:1111
 65000:3333
 !
vrf XYZ
 address-family ipv4 unicast
 import route-target
 65000:2222
 65000:4444
 !
 export route-target
 65000:2222
 65000:3333
 !
vrf CENTRAL
 address-family ipv4 unicast
 import route-target
 65000:3333
 !
 export route-target
 65000:4444
 !
```

B.

```
vrf ABC
 address-family ipv4 unicast
 import route-target
 65000:1111
 !
 export route-target
 65000:1111
 !
vrf XYZ
 address-family ipv4 unicast
 import route-target
 65000:2222
 !
 export route-target
 65000:2222
 65000:1111
 !
vrf CENTRAL
 address-family ipv4 unicast
 import route-target
 65000:3333
 65000:1111
 65000:2222
 !
 export route-target
 65000:3333
 65000:1111
 65000:2222
```

- C. 

```
vrf ABC
 address-family ipv4 unicast
 import route-target
 65000:1111
 65000:4444
 !
 export route-target
 65000:1111
 65000:3333
 !
vrf XYZ
 address-family ipv4 unicast
 import route-target
 65000:2222
 65000:3333
 !
 export route-target
 65000:2222
 65000:4444
 !
vrf CENTRAL
 address-family ipv4 unicast
 import route-target
 65000:3333
 !
 export route-target
 65000:4444
 !
```
- D. 

```
vrf ABC
 address-family ipv4 unicast
 import route-target
 65000:1111
 65000:3333
 !
 export route-target
 65000:1111
 65000:3333
 !
vrf XYZ
 address-family ipv4 unicast
 import route-target
 65000:2222
 65000:3333
 !
 export route-target
 65000:2222
 65000:3333
 !
vrf CENTRAL
 address-family ipv4 unicast
 import route-target
 65000:3333
 !
 export route-target
 65000:3333
 !
```

Answer: B

#### NEW QUESTION 13

```
Router 1:

ip route 192.0.2.0 255.255.255.0 null 0
ip route 192.168.1.0 255.255.255.0 null 0 tag 1

route-map ddos
match tag 1
set ip next-hop 192.0.2.1
set local-preference 150
set community no export

route-map ddos permit 20

router bgp 65513
redistribute static route-map ddos

Router 2:

ip route 192.0.2.0 255.255.255.0 null 0
```

Refer to the exhibit. An engineer is preparing to implement data plane security configuration. Which statement about this configuration is true?

- A. Router 1 and Router 2 advertise the route to 192.0.2.0 to all BGP peers.
- B. All traffic to 192.168.1.0/24 is dropped.
- C. All traffic is dropped.
- D. Router 1 drops all traffic with a local-preference set to 150.

**Answer:** A

#### NEW QUESTION 18

Which MPLS design attribute can you use to provide Internet access to a major customer through a separate dedicated VPN?

- A. The Internet gateway router is connected as a PE router to the MPLS backbone.
- B. The CE router supports VRF-Lite and the full BGP routing table.
- C. The Internet gateway inserts the full Internet BGP routing table into the Internet access VPN.
- D. The customer that needs the Internet access service is assigned to the same RTs as the Internet gateway.

**Answer:** D

#### NEW QUESTION 23

```
CE1#
interface FastEthernet/0/0/1
description **** HUB CE non router ****
ip address 10.0.12.1 255.255.255.0

router ospf 100
log-adjacency-changes
network 10.0.12.0 0.0.255.255 area 0

CE2#
interface Serial0/0/9
description **** SPOKE CE router ****
encapsulation ppp
ip address 10.0.12.12 255.255.255.0

router ospf 100
log-adjacency-changes
network 10.0.12.0 0.0.255.255 area 0
```

Refer to the exhibit. A network engineer is configuring customer edge routers to finalize a L2VPN over MPLS deployment. Assume that the AToM L2VPN service that connects the two CE is configured correctly on the service provider network. Which action causes the solution to fail?

- A. OSPF does not work with L2VPN services.
- B. The routing protocol network types are not compatible.
- C. A loopback with a /32 IP address has not been used.
- D. The xconnect statement has not been defined.

**Answer:** B

#### NEW QUESTION 26

Refer to the exhibit. Which effect of this configuration is true?

- A. It enables MPLS on the interface.
- B. It creates a pseudowire class named cisco.
- C. It enables AToM on interface gigabitethernet1/0.
- D. It enables tagging for VLAN 12 on the interface.

**Answer: C**

#### NEW QUESTION 27

A network engineer must enable the helper router to terminate the OSPF graceful restart process if it detects any changes in the LSA. Which command enables this feature?

- A. nsf ietf helper disable
- B. nsf cisco helper disable
- C. nsf ietf helper strict-lsa-checking
- D. nsf cisco enforce global

**Answer: A**

#### NEW QUESTION 30

```
R1
router bgp 65000
router-id 192.168.1.1
neighbor 192.168.1.2 remote-as 65012
neighbor 192.168.1.2 local-as 65112
```

Refer to the exhibit. A network engineer is implementing a BGP protocol. Which effect of the local-as keyword in this configuration is true?

- A. It enables peer 192.168.1.2 to establish a BGP relationship with R1 using AS 65012 without additional configuration.
- B. It enables peer 192.168.1.2 to establish a BGP relationship with R1 using AS 65112 and the VPNv4 address family.
- C. It enables peer 192.168.1.2 to establish a BGP relationship with R1 using AS 65012 and the VPNv4 address family.
- D. It enables peer 192.168.1.2 to establish a BGP relationship with R1 using AS 65112 without additional configuration.

**Answer: D**

#### NEW QUESTION 33

```
RP/0/0/CPU0:router# show bgp neighbors 192.168.2.2

BGP neighbor is 192.168.2.2, remote AS 1, local AS 140, external link
Remote router ID 0.0.0.0
 BGP state = Idle
 Last read 00:00:00, hold time is 180, keepalive interval is 60 seconds
 Received 0 messages, 0 notifications, 0 in queue
 Sent 0 messages, 0 notifications, 0 in queue
 Minimum time between advertisement runs is 15 seconds

For Address Family: IPv4 Unicast
 BGP neighbor version 0
 Update group: 0.1
 eBGP neighbor with inbound or outbound policy; defaults to 'drop'
 Route refresh request: received 0, sent 0
 0 accepted prefixes
 Prefix advertised 0, suppressed 0, withdrawn 0, maximum limit 524288
 Threshold for warning message 75%

Connections established 0; dropped 0
Last reset 00:02:03, due to BGP neighbor initialized
External BGP neighbor not directly connected.
```

Refer to the exhibit. Based on the show command output, which result is true after BGP session is established?

- A. The IOS XR router advertises and accepts all routes to and from eBGP neighbor 192.168.2.2.
- B. The IOS XR router advertises all routes to the neighbor 192.168.2.2, but it does not accept any routes from 192.168.2.2.
- C. No routes are accepted from the neighbor 192.168.2.2, nor are any routes advertised to it.
- D. The IOS XR router does not advertises any routes to the neighbor 192.168.2.2, but it accepts any routes from 192.168.2.2.

**Answer: C**

#### NEW QUESTION 38

```
R1
router isis
 net 49.0012.1111.1111.00
 is-type level-1
 area-password cisco
R2
router isis
 net 49.0022.1111.1111.00
 is-type level-1-2
 area-password cisco
```

Refer to the exhibit Which effect of this configuration is true?

- A. The two routers fail to form a neighbor relationship because they have different IS-IS area types.
- B. The two routers successfully form a neighbor relationship.
- C. The two routers fail to form a neighbor relationship because the authentication configuration is missing.
- D. The two routers fail to form a neighbor relationship because their system IDs are different.

**Answer: B**

#### NEW QUESTION 41

```
router ospf 1
 nsf ietf restart interval 90
```

Refer to the exhibit. Which purpose of implementing NSF with this configuration is true?

- A. The router uses NSF to handle RP switchover while allowing neighbor relationships to remain up.
- B. The router uses NSF to reduce neighbor-relationship downtime during RP switchover.
- C. The router uses NSF to load balance traffic on a routed EtherChannel.
- D. The router uses NSF to load balance traffic between two links, with the primary link alternating every 90 seconds.

**Answer: A**

#### NEW QUESTION 45

Which task must be performed first to implement BFD in an IS-IS environment?

- A. Configure BFD in an interface configuration mode.
- B. Disable Cisco Express Forwarding on all interfaces running routing protocols other than IS-IS.
- C. Configure all IS-IS routers as Level 2 devices.
- D. Configure BFD under the IS-IS process.

**Answer: D**

#### NEW QUESTION 48

A customer of an ISP requests support to setup a BGP routing policy. Which BGP attribute should be configured to choose specific BGP speakers as preferred points for the customer AS?

- A. lowest multi-exit discriminator
- B. highest local preference outbound
- C. lowest local preference inbound
- D. highest local preference inbound

**Answer: B**

#### NEW QUESTION 51

```
R1
interface fastethernet1/0
 ip address 192.168.2.14 255.255.255.0
 ip ospf message-digest-key 1 md5 cisco
 ip ospf authentication message-digest
```

Refer to the exhibit. Which condition must be met by the OSPF peer of router R1 before the two devices can establish communication?

- A. The OSPF peer must use clear-text authentication.
- B. The OSPF peer must be configured as an OSPF stub router.
- C. The interface on the OSPF peer may have a different key ID, but it must use the same key value as the configured interface.
- D. The interface on the OSPF peer must use the same key ID and key value as the configured interface.

**Answer: D**

#### NEW QUESTION 53

Refer to the exhibit. Which statement about the neighbor statements for 192.168.1.1 is true?

- A. The router sends BGP labels for its prefixes to this peer.
- B. The router must have TDP configured for the send-label command to operate.
- C. The neighbor router receives at least four labels from this router.
- D. The router sends only a label for the prefix for Loopback0.

Answer: A

NEW QUESTION 57

```
R1
router isis
 net 52.0011.0000.0000.0001.00
 is-type level-2

interface gigabitethernet0/1
 ip address 192.168.0.1 255.255.255.0
 ip router isis

R2
router isis
 net 52.0022.0000.0000.0002.00
 is-type level-1

interface gigabitethernet0/1
 ip address 192.168.0.2 255.255.255.0
 ip router isis
```

Refer to the exhibit. Which statement about the status of the neighbor relationship between R1 and R2 is true?

- A. The neighbor relationship is down because the two routers are configured with different area types.
- B. The neighbor relationship is down because the two routers are in the same subnet.
- C. The neighbor relationship is up because R2 is level 1 and level 2 router.
- D. The neighbor relationship is down because R2 is operating as a Level 1 router and the two routers are in different areas.

Answer: A

NEW QUESTION 60

|                                                                                                                                                                                                                                                                                          |                                                                                                                                                                                                                                                                                                                                    |
|------------------------------------------------------------------------------------------------------------------------------------------------------------------------------------------------------------------------------------------------------------------------------------------|------------------------------------------------------------------------------------------------------------------------------------------------------------------------------------------------------------------------------------------------------------------------------------------------------------------------------------|
| <pre>PE-A ! interface FastEthernet0/0   ip address 10.10.10.1 255.255.255.252   ip ospf authentication null   ip ospf 1 area 0   duplex full end  ! router ospf 1   log-adjacency-changes   passive-interface Loopback0   network 10.10.10.0 0.0.0.3 area 0   default-metric 200 !</pre> | <pre>PE-B ! interface FastEthernet0/0   ip address 10.10.10.2 255.255.255.252   ip ospf authentication null   ip mtu 1400   ip ospf 1 area 0   duplex half end !  R1#sho run   b router ospf router ospf 1   log-adjacency-changes   passive-interface Loopback10   network 10.10.10.0 0.0.0.255 area 0   default-metric 100</pre> |
|------------------------------------------------------------------------------------------------------------------------------------------------------------------------------------------------------------------------------------------------------------------------------------------|------------------------------------------------------------------------------------------------------------------------------------------------------------------------------------------------------------------------------------------------------------------------------------------------------------------------------------|

Refer to the exhibit. Which configuration prevents the OSPF neighbor from establishing?

- A. default-metric
- B. duplex
- C. network statement
- D. mtu

Answer: D

NEW QUESTION 64

Which two tasks must you perform when you implement LDP NSF on your network? (Choose two.)

- A. Enable NSF for BGP.
- B. Implement direct connections for LDP peers.
- C. Enable NSF for EIGRP.
- D. Disable Cisco Express Forwarding.
- E. Enable NSF for the link-state routing protocol that is in use on the network.

Answer: BE

NEW QUESTION 69

```
R1
interface fastethernet1/0
 ip address 192.168.1.3 255.255.255.0
router bgp 65000
 router-id 192.168.1.1
 neighbor 192.168.1.2 remote-as 65012

R2
interface fastethernet1/0
 ip address 192.168.1.2 255.255.255.0
router bgp 65012
 router-id 192.168.1.1
 neighbor 192.168.1.3 remote-as 65000
 neighbor 192.168.1.3 local-as 65112
```

Refer to the exhibit. Assume all other configurations are correct and the network is otherwise operating normally. Which conclusion can you draw about the neighbor relationship between routers R1 and R2?

- A. The neighbor relationship is up.
- B. The neighbor relationship will be up only if the two devices have activated the correct neighbor relationships under the IPv4 address family.
- C. The neighbor is down because the local-as value for R2 is missing in the R1 neighbor statement.
- D. The neighbor relationship is down because R1 believes R2 is in AS 65012.

**Answer: D**

#### NEW QUESTION 70

```
R1

router bgp 65000
 router-id 192.268.1.1
 neighbor 192.168.1.2 remote-as 65001
 neighbor 192.168.1.2 password cisco
```

Refer to the exhibit Router R1 and its peer R2 reside on the same subnet in the network. If an engineer implements this configuration to R1, how does it make connections to R2?

- A. R1 establishes TCP connections that are authenticated with a clear-text password.
- B. R1 establishes UDP connections that are authenticated with an MD5 password.
- C. R1 establishes UDP connections that are authenticated with a clear-text password.
- D. R1 establishes TCP connections that are authenticated with an MD5 password.

**Answer: D**

#### NEW QUESTION 73

```
interface gigabitethernet1/0/1
switchport mode access
switchport access vlan 5
channel-group 1 mode desirable
```

Refer to the exhibit. An engineer is preparing to implement link aggregation configuration. Which statement about this configuration is true?

- A. The switch port negotiates an EtherChannel if it receives LACP packets from a connected peer running passive mode.
- B. The switch port actively sends packets to negotiate an EtherChannel using PAgP.
- C. The switch port passively negotiates an EtherChannel if it receives PAgP packets from a connected peer.
- D. The switch port accepts LACP and PAgP packets from a connected peer and negotiate an EtherChannel using the common EtherChannel mode.

**Answer: B**

#### NEW QUESTION 75

How can shared services in an MPLS Layer 3 VPN provide Internet access to the Customers of a central service provider?

- A. Static routes on CE routers allow route leakage from a PE global routing table.
- B. The CE router can establish a BGP peering to a PE router and use the PE device to reach the Internet.
- C. The customer VRF uses route targets to import and export routes to and from a shared services VRF.
- D. Route distinguishers are used to identify the routes that CEs can use to reach the Internet.

**Answer: C**

#### NEW QUESTION 79

```
R1

ip cef distributed
mpls ldp graceful-restart
interface GigabitEthernet 0/0/1
 mpls ip
 mpls label protocol ldp
```

Refer to the exhibit Which effect of this configuration is true?

- A. R1 can support a peer that is configured for LDP SSO/NSF as the peer recovers from an outage.
- B. R1 can support a graceful restart operation on the peer, even if graceful restart is disabled on the peer.
- C. R1 can failover to any peer.
- D. R1 can failover only to a peer that is configured for LDP SSO/NSF.

**Answer:** A

#### NEW QUESTION 82

In an MPLS network, which protocol can be used to distribute a Segment Prefix?

- A. LDP
- B. EIGRP
- C. OSPF
- D. RSVP-TE

**Answer:** C

#### NEW QUESTION 87

Which utility can you use to locate MPLS faults?

- A. MPLS LSP ping
- B. QoS
- C. MPLS traceroute
- D. EEM

**Answer:** C

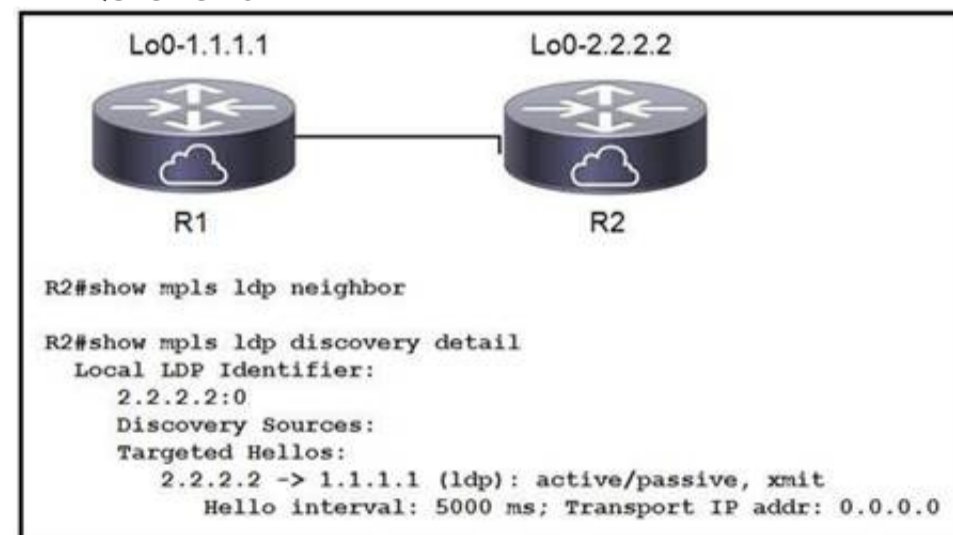
#### NEW QUESTION 89

When configuring traffic engineering tunnels in Cisco MPLS core network, you see the traffic is not taking the expected path in the core. Which command do you use to quickly check path of a TE tunnel?

- A. traceroute <tunnel destination IP>
- B. show mpls traffic-engineering tunnels
- C. Ping <tunnel destination IP>
- D. traceroute mpls ipv4 <tunnel destination>

**Answer:** D

#### NEW QUESTION 91



Refer to the exhibit. When implementing an LDP protocol, an engineer experienced an issue between two directly connected routers and noticed that no LDP neighbor exists for 1.1.1.1. Which factor should be the reason for this situation?

- A. LDP needs to be enabled on the R2 loopback interface.
- B. LDP needs to be enabled on the R2 physical interface.
- C. R2 does not see any hellos from R1.
- D. R2 sees the wrong type of hellos from R1.

**Answer:** B

#### NEW QUESTION 95

A router RP is configured to perform MPLS LDP graceful restart.

Which three steps are included when the RP sends an LDP initialization message to a neighbor to establish an LDP session? (Choose three.)

- A. Learn from Neighbor (N) flag, set to 1
- B. Recovery Time field
- C. Type-9 LSA
- D. Reconnect Timeout field
- E. Graceful restart capability in OPEN message
- F. Learn from Network (L) flag, set to 1

**Answer:** BDF

#### NEW QUESTION 100

A regional MPLS VPN provider operates in two regions and wants to provide MPLS L3VPN service for a customer with two sites in these separate locations. The VPN provider approaches another organization to provide backbone carrier services so that the provider can connect to these two locations.

Which statement about this scenario is true?

- A. When edge routers at different regional sites are connected over the global carrier backbone, MP-eBGP must run between the routers to exchange the customer VPNv4 routes.
- B. When eBGP is used for label exchange using the send-label option, MPLS-BGP forwarding is configured under the global ABC CSC PE-to-CE interface.
- C. When BGP is used for both route and label exchange, the neighbor a.b.c.d send-label command is used under the address-family VPNv4 command mode.
- D. When IGP is used for route exchange and LDP for label exchange, MPLS is enabled only on the VRF interface on the backbone-carrier PE side.

**Answer:** B

#### NEW QUESTION 103

```
route-policy qppb-as6000
if as-path in (ios-regex '61100, 61200, 61300') then
set qos-group 10

router bgp 100 bgp
table-policy qppb-as6000
```

Refer to the exhibit. Which statement supports QPPB implementation?

- A. QPPB policies affect only egress traffic.
- B. QoS policies rely exclusively on BGP attributes to manipulate traffic.
- C. QoS policies are identified in the MPLS forwarding table.
- D. QoS policies use BGP to gain full coverage on the network.

**Answer:** D

#### NEW QUESTION 104

Refer to the exhibit. You are configuring an administrative domain in the given multi-vendor environment with PIM-SM. Which feature can you implement so that devices can dynamically learn the RP?

- A. BSR
- B. BIDIP-PIM
- C. Auto-RP
- D. SSM

**Answer:** C

#### NEW QUESTION 106

Refer to the exhibit. Which command is used to complete this configuration for QoS class-based marking?

- A. PE-A(config-pmap-c)#set dscp ef
- B. PE-A(config-pmap-c)#priority
- C. PE-A(config-pmap-c)#random-detect
- D. PE-A(config-pmap-c)#fair-queue

**Answer:** A

#### NEW QUESTION 110

How can a network administrator secure rest APIs?

- A. They can have a general administrator login for multiple users to access that has command entries logged.
- B. They can authenticate user sessions and provide the appropriate privilege level.
- C. They can ensure that user sessions are authenticated using TACACS+ only.
- D. They can allow read and write privileges to all users.

**Answer:** B

#### NEW QUESTION 112

What is the difference between SNMP and model- driven telemetry?

- A. SNMP uses the YANG data modeling language.
- B. Telemetry uses traps and inform messages to deliver data to a network administrator on a polling basis.
- C. Telemetry allows for modeled network data to be pushed to the network administrator on an as-needed basis.
- D. SNMP pushes network data to the network administrator whenever it is queried.

**Answer: C**

#### NEW QUESTION 114

Refer to the exhibit. If the NetFlow configuration is updated to version 9, which additional piece of information can be reported?

- A. IPv4 flow information
- B. BGP AS information
- C. IPv6 flow information
- D. flow sequence numbers

**Answer: C**

#### NEW QUESTION 115

Which service is a VNF role?

- A. Network
- B. Firewall
- C. Storage
- D. Compute

**Answer: A**

#### NEW QUESTION 118

Refer to the exhibit. This configuration is being applied on an IOS XR router.  
Which statement about this configuration is true?

- A. It is used to enable gRPC.
- B. It is used to create a streaming subscription with a 600-second interval.
- C. It is used to set up configuration to poll network data.
- D. It is used to create a streaming subscription with a 60-Second interval.

**Answer: D**

#### NEW QUESTION 121

```
telemetry model-driven
sensor-group cisco
sensor-path Cisco-IOS-XR-infra-statsd-oper:infra-statistics/interfaces/interface/latest/generic-counters
commit
```

Refer to the exhibit. This configuration is being applied on an IOS XR route. Which statement about this configuration is true?

- A. It is used to create a sensor-group and has a list of YANG models for streaming.
- B. It is used to create a subscription to specify the streaming interval.
- C. It is used to identify MIB entries and has a list of YANG models.
- D. It is used to identify traps for SNMP polling.

**Answer: A**

#### NEW QUESTION 124

.....

## Thank You for Trying Our Product

### We offer two products:

1st - We have Practice Tests Software with Actual Exam Questions

2nd - Questions and Answers in PDF Format

### 350-501 Practice Exam Features:

- \* 350-501 Questions and Answers Updated Frequently
- \* 350-501 Practice Questions Verified by Expert Senior Certified Staff
- \* 350-501 Most Realistic Questions that Guarantee you a Pass on Your First Try
- \* 350-501 Practice Test Questions in Multiple Choice Formats and Updates for 1 Year

**100% Actual & Verified — Instant Download, Please Click**  
**[Order The 350-501 Practice Test Here](#)**