

## mb-300 Dumps

### Microsoft Dynamics 365 Unified Operations Core

<https://www.certleader.com/mb-300-dumps.html>



**NEW QUESTION 1**

- (Exam Topic 1)

You need to configure the system for account representatives.

Which two actions should you perform? Each correct answer presents a partial solution.

NOTE: Each correct selection is worth one point.

- A. Recreate the job alert as a change-based alert.
- B. Enable change-based alerts.
- C. Increase the batch job running frequency.
- D. Specify the batch server for the alert notifications job.

**Answer:** AB

**NEW QUESTION 2**

- (Exam Topic 2)

You are a Dynamics 365 for Finance and Operations system administrator.

You use Lifecycle Services (LCS) for your deployment. The company currently has multiple methodologies assigned to various projects. One methodology is incorrectly assigned and must be changed.

You need to change the methodology on an existing project.

Which two options can you use? Each correct answer presents a complete solution. NOTE: Each correct selection is worth one point.

- A. Change methodology
- B. Project settings
- C. Manage methodologies
- D. Edit methodology

**Answer:** AC

**NEW QUESTION 3**

- (Exam Topic 2)

A multinational company has many legal entities and a complex organizational structure.

The management of the company wants to set up an organizational hierarchy to help improve efficiency. You need to help create the organizational hierarchy.

In which order should you recommend that actions be performed to create an organizational hierarchy? To answer, move all actions from the list of actions to the answer area and arrange them in the correct order.

1 2 3 4 5

**Actions**

**Answer Area**

Add organizations to the hierarchy

Assign a hierarchy purpose

Create organizations

Create a hierarchy

Plan the organizational model



- A. Mastered
- B. Not Mastered

**Answer:** A

**Explanation:**

References:

<https://docs.microsoft.com/en-us/dynamics365/unified-operations/fin-and-ops/organization-administration/tasks>

**NEW QUESTION 4**

- (Exam Topic 2)

A company implements Dynamics 365 for Finance and Operations.

They need additional information and want a subledger to record information for additional reporting rather than customizing all reports.

You need to set up the posting to accommodate the need for a subledger. Which three actions should you take? Each answer presents part of the solution.

- A. Update existing reports to prevent data in the identified area from reporting
- B. Create posting profiles to post to the identified area as needed for the request
- C. Create posting definitions to post to the identified area as needed for the request
- D. Update existing reports to add data in the identified area
- E. Identify an area of the chart of accounts to record to as the subledger

**Answer:** BDE

**NEW QUESTION 5**

- (Exam Topic 2)

A company implements Dynamics 365 for Finance and Operations.

You have a requirement that the component data for address structure in the system be available in Portuguese (Brazil).

You need to provide address and contact information purpose with translation. What should you do?

- A. Under Organization administration, on the Global addresses tab, enter the appropriate translation value in the translations form
- B. In User options, set the language preference to Portuguese pt-BR and enter addresses for customers and vendors
- C. Upload files to Dynamics 365 Translation Services (DTS) for conversion
- D. Apply return from Dynamics 365 Translation Services (DTS) to the system by submitting a support ticket

**Answer:** A

**NEW QUESTION 6**

- (Exam Topic 2)

Note: This question is part of a series of questions that present the same scenario. Each question in the series contains a unique solution that might meet the stated goals. Some question sets might have more than one correct solution, while others might not have a correct solution.

After you answer a question in this section, you will NOT be able to return to it. As a result, these questions will not appear in the review screen.

You are a functional consultant who is deploying Dynamics 365 for Finance and Operations. The implementation must:

- ☐ Use an iterative approach
- ☐ Integrate with real-world data
- ☐ Enforce standards and governance
- ☐ Implement multiple rounds of feedback

You need to deploy and validate the implementation.

Solution: Use the XPPBP tool to export customizations and scenarios from a development sandbox. Make changes to the sandbox containing users. Deploy from the sandbox to the production environment.

Does the solution meet the goal?

- A. Yes
- B. No

**Answer:** B

**NEW QUESTION 7**

- (Exam Topic 2)

You are a Dynamics 365 for Finance and Operations system administrator for a new implementation. You have a solution that needs to be tested using User Acceptance Testing (UAT). You have created a Business process modeler (BPM) library.

You need to validate and support the solution.

Which three actions should you perform? Each answer presents part of the solution.

- A. Upload the saved recording to BPM.
- B. Create a new Business process library
- C. Export the task recording to Microsoft Word and upload it to BPM.
- D. Record test cases and save them to BPM.
- E. Create and save a new task recording.

**Answer:** ABD

**NEW QUESTION 8**

- (Exam Topic 2)

You set up security roles for the users in a company. You must use standard security roles when possible. You need to identify the standard security roles.

Which of the following can you assign to a user as a standard security role?

- A. Leasing manager
- B. System engineer
- C. Business development manager
- D. Waterspider

**Answer:** D

**NEW QUESTION 9**

- (Exam Topic 2)

You are a Dynamics 365 for Finance and Operations implementation consultant.

You plan to use automated regression testing in a company's environment, as the system will be updated frequently until automatic updates can be applied.

You need to identify when and what key business object should be used during the implementation. Which business objects should you use? To answer, drag the appropriate objects to the correct component

actions. Each object may be used once, more than once, or not at all. You may need to drag the split bar between panes or scroll to view content.

NOTE: Each correct selection is worth one point.

Objects

Test scripts

Business requirements

Answer Area

Component actions

Generate from the analysis meetings

Use for regression testing

Generate use cases

Use in a gap analysis process

Object

Object

Object

Object

Object

- A. Mastered
- B. Not Mastered

Answer: A

Explanation:

Objects

Test scripts

Business requirements

Answer Area

Component actions

Generate from the analysis meetings

Use for regression testing

Generate use cases

Use in a gap analysis process

Object

Test scripts

Test scripts

Business requirements

Business requirements

NEW QUESTION 10

- (Exam Topic 2)

You manage a Dynamics 365 for Finance and Operations environment. Users report slow queries, deadlocks, and crashes. You need identify which tool to use to troubleshoot. What should you use?

- A. System diagnostics
- B. Environment monitoring
- C. DirectQuery
- D. Microsoft Azure Active Directory Connect Health Agent

Answer: B

Explanation:

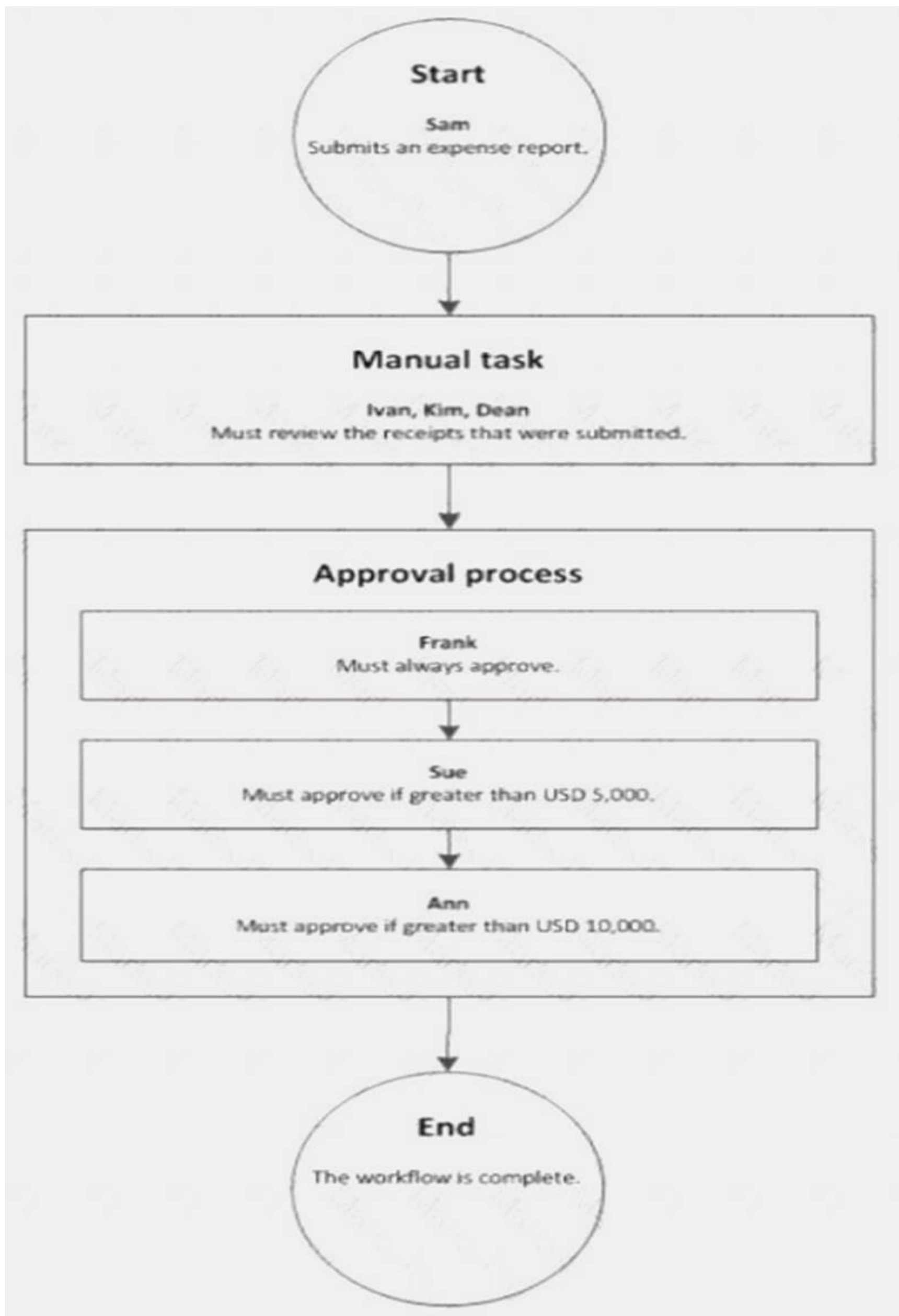
Reference:

<https://blogs.msdn.microsoft.com/axsa/2018/06/05/how-to-use-environment-monitoring-view-raw-logs/>

NEW QUESTION 10

- (Exam Topic 2)

A company sets up a workflow for expense reports. An employee named Sam submits an expense report totaling USD 7,000 to go through the workflow.



Use the drop-down menus to select the answer choice that answers each question based on the information presented in the graphic.

NOTE: Each correct selection is worth one point.



Answer Area	
<b>Questions</b>	<b>Answer choice</b>
What statement about the workflow is correct?	Ann can reject the expense report. Ivan, Kim, and Dean must all complete the manual task. The workflow ends after Sue approves the expense report. The expense report will go through Frank, Sue, and Ann for approval.
What type of workflow is this?	Workflow with roles Workflow with a manual decision Workflow with multiple users in a task Workflow with a line-item workflow element

- A. Mastered
- B. Not Mastered

**Answer:** A

**Explanation:**

Reference:

<https://docs.microsoft.com/en-us/dynamicsax-2012/appuser-itpro/workflow-with-multiple-users-in-a-task>

**NEW QUESTION 13**

- (Exam Topic 2)

You set up Dynamics 365 for Finance and Operations. Your organization will use email with the application.

You need to ensure that email will be sent using typical secure settings. What setting must be set up as specified?

- A. Specify if SSL is required is selected.
- B. Information rights management is enabled.
- C. In-place hold and Litigation hold are enabled.
- D. In-place eDiscovery is enabled.

**Answer:** A

**NEW QUESTION 14**

- (Exam Topic 2)

Note: This question is part of a series of questions that present the same scenario. Each question in the series contains a unique solution that might meet the stated goals. Some question sets might have more than one correct solution, while others might not have a correct solution.

After you answer a question in this section, you will NOT be able to return to it. As a result, these questions will not appear in the review screen.

You are a Dynamics 365 for Finance and Operations security administrator.

When testing security setups, users report that certain roles are gaining access to sensitive information via a form in the system.

You must investigate which user roles have what visibility and access level to system objects, and then send a report to the implementation team to address security compliance concerns.

You need to report the information from the system. Solution: Generate the Security duty assignments report. Does the solution meet the goal?

- A. Yes
- B. No

**Answer:** B

**NEW QUESTION 18**

- (Exam Topic 2)

You plan a data migration from Dynamics AX 2009 to a Dynamics 365 for Finance and Operations environment.

You need to ensure that you can perform the data migration. What should you do first?

- A. Upgrade the existing on-premises environment to Dynamics 365 for Finance and Operations online
- B. Migrate content to Dynamics POS (Point-of-Sale) 2009
- C. Upgrade the existing on-premises environment to Dynamics AX 2012 R2
- D. Migrate content to Dynamics 365 Business Central

**Answer:** C

**NEW QUESTION 23**

- (Exam Topic 2)

A company plans to create a global address book and additional address books for each line of business. You need to help add parties to the address books.

What party types can you use for both the global address book and the additional address books? NOTE: Each correct selection is worth one point.

- A. Customer
- B. Vendor
- C. Person
- D. Competitor
- E. Organization

**Answer:** ABD

**Explanation:**

<https://docs.microsoft.com/en-sg/dynamics365/unified-operations/fin-and-ops/organization-administration/overv>

**NEW QUESTION 27**

- (Exam Topic 2)

A company is migrating to Dynamics 365 for Finance and Operations from a legacy system. The company is creating new questionnaires for customers. When the survey responses come in, the company wants to provide ratings as a foundation for a further discussion. You set up questionnaire types, question types, and questionnaire parameters. You need to design the questionnaire. In which order should you perform the actions? To answer, move all actions to the answer area and arrange them in the correct order.

**Actions**

Attach questions to the questionnaire
Set up the questionnaire
Set up questions and their association
Set up answer groups and answers

**Answer Area**



- A. Mastered
- B. Not Mastered

**Answer:** A

**Explanation:**

References:

<https://docs.microsoft.com/en-us/dynamics365/unified-operations/talent/design-questionnaires>

**NEW QUESTION 28**

- (Exam Topic 2)

Note: This question is part of a series of questions that present the same scenario. Each question in the series contains a unique solution that might meet the stated goals. Some question sets might have more than one correct solution, while others might not have a correct solution.

After you answer a question in this section, you will NOT be able to return to it. As a result, these questions will not appear in the review screen.

You are a Dynamics 365 for Finance and Operations system administrator. You have a test environment that is used by several people at any given time.

You create a new data entity in your development and migrate the code to the test environment. In the test environment, you are unable to find the data entity in the list.

You need to locate the data entity.

Solution: In the Data management framework parameter screen, refresh the Entity list. Does the solution meet the goal?

- A. Yes
- B. No

**Answer:** A

**NEW QUESTION 30**

- (Exam Topic 2)

A company needs to set up its printers to work with Dynamics 365 for Finance and Operations. You need to set up the printers for network printing from the Dynamics 365 client browser.

Which three actions should be performed in order? To answer, move all actions from the list of actions to the answer area and arrange them in the correct order.

**Actions**

Activate the network printers
Install and configure a document routing agent
Set up the network printer and assign a static IP
Register network printers in Finance and Operations

**Answer Area**



- A. Mastered
- B. Not Mastered

**Answer:** A

**Explanation:**

References:

<https://docs.microsoft.com/en-us/dynamics365/unified-operations/dev-itpro/analytics/install-document-routing-a>

**NEW QUESTION 35**

- (Exam Topic 2)

Note: This question is part of a series of questions that present the same scenario. Each question in the series contains a unique solution that might meet the stated goals. Some question sets might have more than one correct solution, while others might not have a correct solution.

After you answer a question in this section, you will NOT be able to return to it. As a result, these questions will not appear in the review screen.

You are a Dynamics 365 for Finance and Operations system administrator. You have a test environment that is used by several people at any given time.

You create a new data entity in your development and migrate the code to the test environment. In the test environment, you are unable to find the data entity in the list.

You need to locate the data entity. Solution: Reopen the client browser. Does the solution meet the goal?

A. Yes

B. No

**Answer:** B

**NEW QUESTION 38**

- (Exam Topic 2)

A company implements Dynamics 365 for Finance and Operations.

You are the primary approver for purchase requisitions that are greater than \$500,000. You are going on vacation for two weeks.

You need to assign another user as the approver only for purchase requisitions greater than \$500,000. What should you do?

A. Under User Options, add a user and assign the scope of Module

B. Under User Options, add a user and assign the scope of All

C. Under User Options, add a user and assign the scope of Workflow

**Answer:** C

**NEW QUESTION 41**

- (Exam Topic 2)

A company implements Dynamics 365 for Finance and Operations.

The company wants to utilize Case management to track project issues and risks and associate them to the projects. Project managers will be responsible for managing the new cases.

You need to configure the system. What should you do?

A. Create case subcategories named Issue and Risk.\_

B. Create parent case categories named Issue and Risk.

C. Create case activities for Issue and Risk-

D. Create case category security roles named Issue and Risk and assign them to the Project managers duty.

**Answer:** A

**NEW QUESTION 42**

- (Exam Topic 2)

A company plans to set up an organizational hierarchy to manage organizational relationships. You need to identify which organizational purpose to use. What purpose can you assign to an organizational hierarchy?

A. Centralized payments

B. Financial reason code

C. Cost center

D. Price models

**Answer:** A

**Explanation:**

Reference:

<https://docs.microsoft.com/en-us/dynamics365/unified-operations/financials/cash-bank-management/set-up-cent>

**NEW QUESTION 45**

.....



## Thank You for Trying Our Product

\* 100% Pass or Money Back

All our products come with a 90-day Money Back Guarantee.

\* One year free update

You can enjoy free update one year. 24x7 online support.

\* Trusted by Millions

We currently serve more than 30,000,000 customers.

\* Shop Securely

All transactions are protected by VeriSign!

**100% Pass Your mb-300 Exam with Our Prep Materials Via below:**

<https://www.certleader.com/mb-300-dumps.html>