

300-420 Dumps

Designing Cisco Enterprise Networks (ENSLD)

<https://www.certleader.com/300-420-dumps.html>



NEW QUESTION 1

Which control-plane technology allows the same subnet to exist across multiple network locations?

- A. LISP
- B. VXLAN
- C. FabricPath
- D. ISE mobility services

Answer: B

NEW QUESTION 2

What is an advantage of designing an out-of-band network management solution?

- A. In the event of a production network outage, network devices can still be managed.
- B. There is no separation between the production network and the management network.
- C. In the event of a production network outage, it can be used as a backup network path.
- D. It is less expensive than an in-band management solution

Answer: A

NEW QUESTION 3

What is a benefit of using VRRPv3 as compared to VRRPv2?

- A. VRRPv3 supports IPv4 and IPv6
- B. VRRPv3 supports authentication
- C. VRRPv3 supports preemption
- D. VRRPv3 supports stateful switchover

Answer: A

NEW QUESTION 4

An enterprise customer has these requirements:

- end-to-end QoS for the business-critical applications and VoIP services based on CoS marking.
- flexibility to offer services such as IPv6 and multicast without any reliance on the service provider.
- support for full-mesh connectivity at Layer 2.

Which WAN connectivity option meets these requirements?

- A. VPWS
- B. MPLS VPN
- C. DMVPN
- D. VPLS

Answer: D

NEW QUESTION 5

What is one function of the vSmart controller in an SD-WAN deployment?

- A. orchestrates vEdge and cEdge connectivity
- B. responsible for the centralized control plane of the SD-WAN network
- C. provides centralized network management and a GUI to monitor and operate the SD-WAN overlay
- D. provides a data-plane at branch offices to pass traffic through the SD-WAN network

Answer: B

NEW QUESTION 6

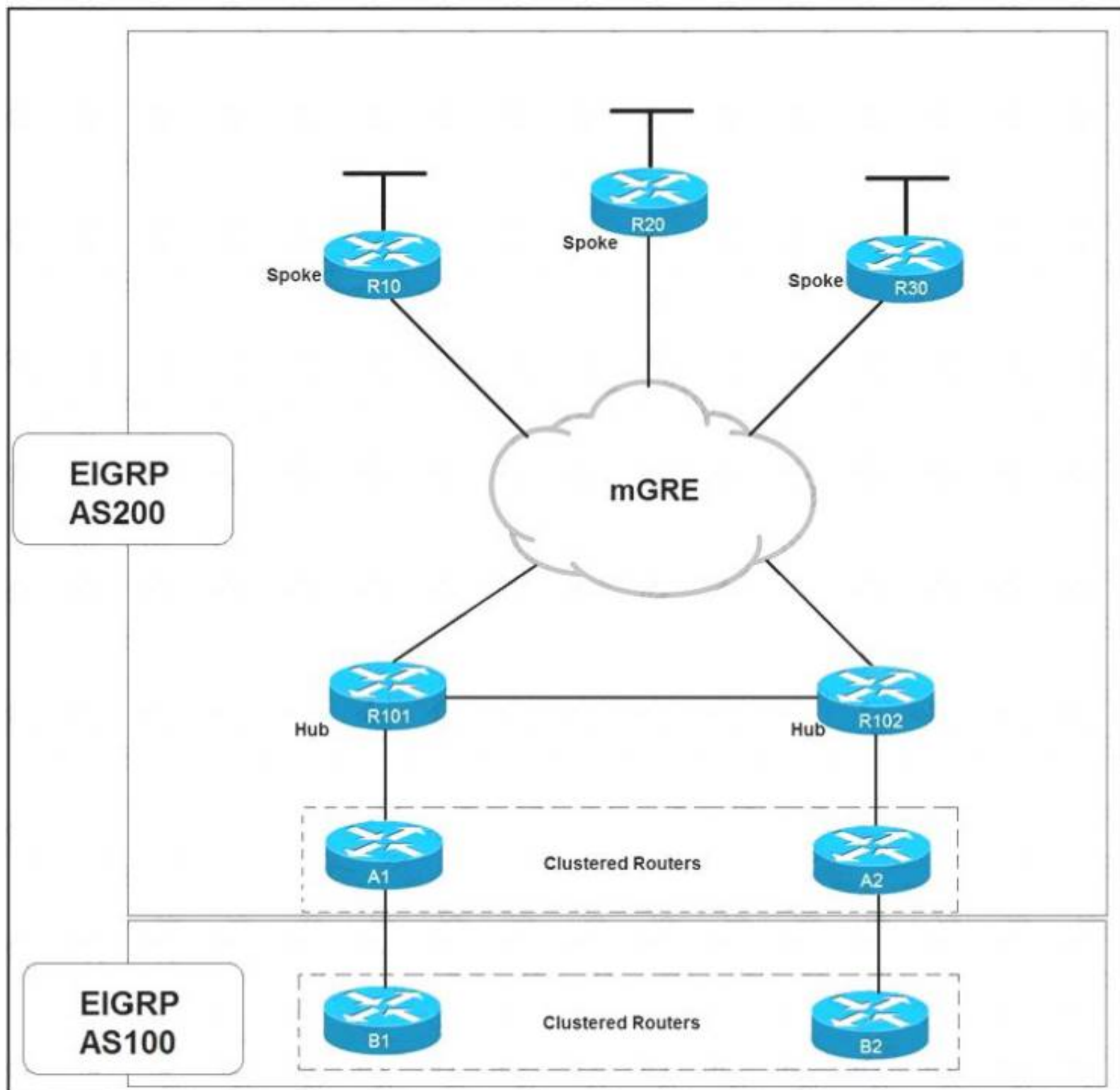
Which solution allows overlay VNs to communicate with each other in an SD-WAN Architecture?

- A. External fusion routers can be used to map VNs to VRFs and selectively route traffic between VRFs.
- B. GRE tunneling can be configured between fabric edges to connect one VN to another.
- C. SGTs can be used to permit traffic from one VN to another.
- D. Route leaking can be used on the fabric border nodes to inject routes from one VN to another.

Answer: B

NEW QUESTION 7

Refer to the exhibit.



Which solution decreases the EIGRP convergence time?

- A. Enable subsecond timers
- B. Increase the hold time value
- C. Increase the dead timer value
- D. Enable stub routing on the spokes

Answer: D

NEW QUESTION 8

Which function are fabric intermediate nodes responsible for in an SD-Access Architecture?

- A. mapping EIDs to RLOCs
- B. encapsulating user traffic in a VXLAN header including the SGT
- C. registering new endpoints in the HTDB
- D. transporting IP packets between edge nodes and border nodes

Answer: D

NEW QUESTION 9

Which two routing protocols allow for unequal cost load balancing? (Choose two.)

- A. EIGRP
- B. IS-IS
- C. BGP
- D. OSPF
- E. RIPng

Answer: AC

NEW QUESTION 10

What is the purpose of an edge node in an SD-Access network fabric?

- A. Edge nodes identify and authenticate endpoints and register endpoint information with control plane nodes.
- B. Edge nodes track endpoint IDs to location mappings, along with IPv4, IPv6, or MAC addresses.

- C. Edge nodes are the gateway between the fabric domain and network outside of the fabric.
D. Edge nodes resolve lookup requests from edge and border nodes to locate destination endpoint IDs.

Answer: A

NEW QUESTION 10

A company with multiple service providers wants to speed up BGP convergence time in the event a failure occurs with their primary link. Which approach achieves this goal and does not impact router CPU utilization?

- A. Utilize BFD and tune the multiplier to 50
B. Lower the BGP hello interval
C. Decrease the BGP keepalive timer
D. Utilize BFD and keep the default BGP timers

Answer: C

NEW QUESTION 14

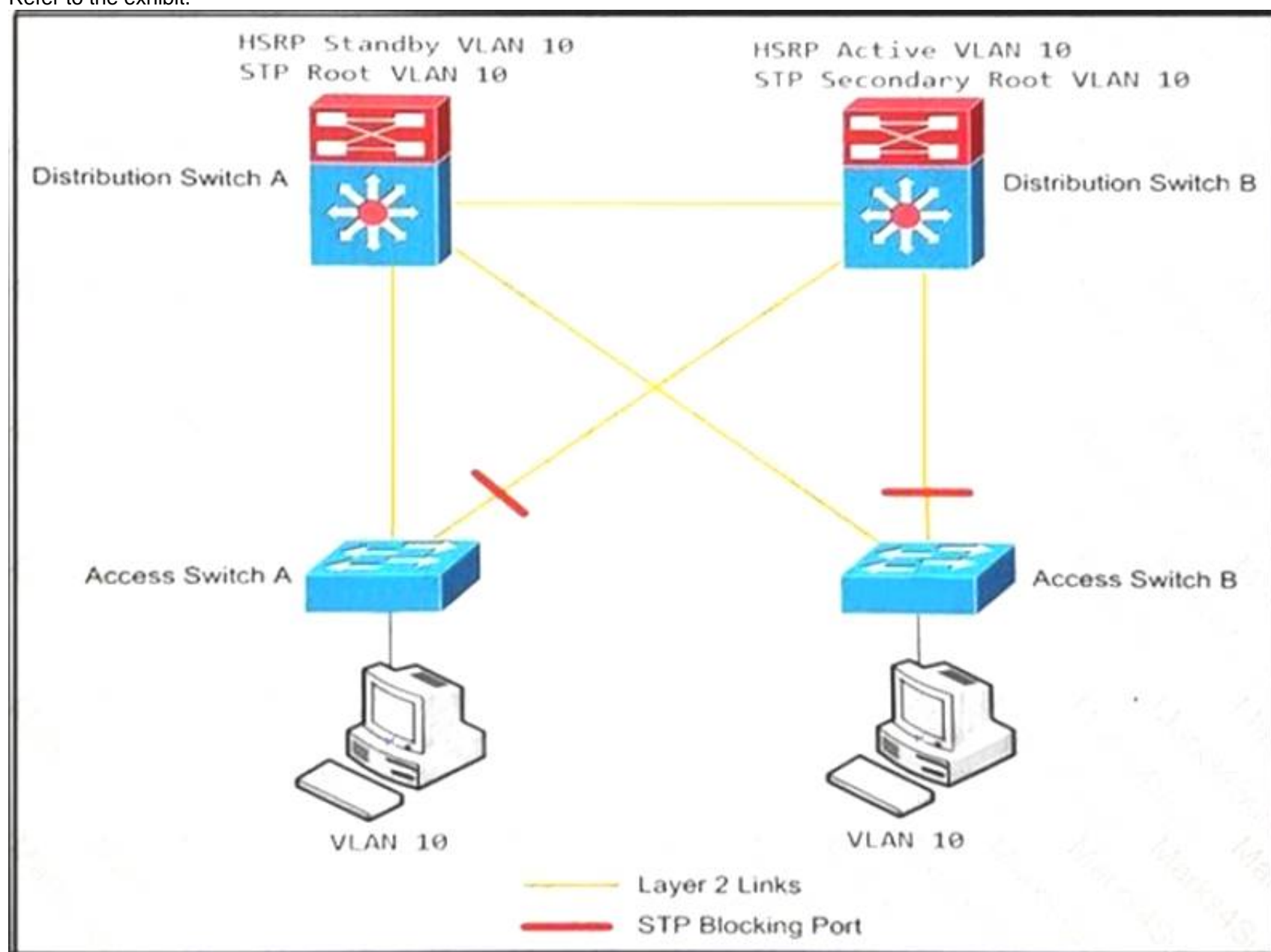
Company A recently acquired another company. Users of the newly acquired company must be able to access a server that exists on Company A's network, both companies use overlapping IP address ranges. Which action conserves IP address space and provides access to the server?

- A. Use a single IP address to create overload NAT
B. Use a single IP address to create a static NAT entry
C. Build one-to-one NAT translation for every user that needs access
D. Re-IP overlapping address space in the acquired company

Answer: A

NEW QUESTION 16

Refer to the exhibit.



An engineer must optimize the traffic flow of the network. Which change provides a more efficient design between the access and the distribution layer?

- A. Add a link between access switch A and access switch B
B. Reconfigure the distribution switch A to become the HSRP Active
C. Change the link between distribution switch A and distribution switch B to be a routed link
D. Create an EtherChannel link between distribution switch A and distribution switch B

Answer: B

NEW QUESTION 19

An engineer is designing an enterprise campus network. The LAN infrastructure consists of switches from multiple vendors, and Spanning Tree must be used as a Layer 2 loop prevention mechanism. All configured VLANs must be grouped in two SIP instances. Which standards-based Spanning Tree technology supports this design solution?

- A. MSTP
- B. RSTP
- C. Rapid PVST
- D. STP

Answer: A

NEW QUESTION 23

A company is using OSPF between its HQ location and a branch office. HQ is assigned area 0 and the branch office is assigned area 1. The company purchases a second branch office, but due to circuit delays to HQ, it decides to connect the new branch office to the existing branch office as a temporary measure. The new branch office is assigned area 2. Which OSPF configuration enables all three locations to exchange routes?

- A. The existing branch office must be configured as a stub area
- B. A virtual link must be configured between the new branch office and HQ
- C. A sham link must be configured between the new branch office and HQ
- D. The new branch office must be configured as a stub area

Answer: B

NEW QUESTION 24

.....

Thank You for Trying Our Product

* 100% Pass or Money Back

All our products come with a 90-day Money Back Guarantee.

* One year free update

You can enjoy free update one year. 24x7 online support.

* Trusted by Millions

We currently serve more than 30,000,000 customers.

* Shop Securely

All transactions are protected by VeriSign!

100% Pass Your 300-420 Exam with Our Prep Materials Via below:

<https://www.certleader.com/300-420-dumps.html>