

Exam Questions MS-500

Microsoft 365 Security Administrator

<https://www.2passeasy.com/dumps/MS-500/>



NEW QUESTION 1

You need to recommend a solution for the user administrators that meets the security requirements for auditing. Which blade should you recommend using from the Azure Active Directory admin center?

- A. Sign-ins
- B. Azure AD Identity Protection
- C. Authentication methods
- D. Access review

Answer: A

Explanation:

References:

<https://docs.microsoft.com/en-us/azure/active-directory/reports-monitoring/concept-sign-ins>

NEW QUESTION 2

HOTSPOT

You install Azure ATP sensors on domain controllers.

You add a member to the Domain Admins group. You view the timeline in Azure ATP and discover that information regarding the membership change is missing.

You need to meet the security requirements for Azure ATP reporting.

What should you configure? To answer, select the appropriate options in the answer area. NOTE: Each correct selection is worth one point.

Policy to edit:

	▼
Default Domain Controllers Policy	
Default Domain Policy	
A local policy on one domain controller	

Audit setting to configure:

	▼
Audit User Account Management	
Audit Computer Account Management	
Audit Other Account Management Events	
Audit Security Group Management	

- A. Mastered
- B. Not Mastered

Answer: A

Explanation:

References:

<https://docs.microsoft.com/en-us/azure-advanced-threat-protection/atp-advanced-audit-policy>

NEW QUESTION 3

You need to recommend a solution that meets the technical and security requirements for sharing data with the partners.

What should you include in the recommendation? Each correct answer presents part of the solution. NOTE: Each correct selection is worth one point.

- A. Create an access review.
- B. Assign the Global administrator role to User1.
- C. Assign the Guest inviter role to User1.
- D. Modify the External collaboration settings in the Azure Active Directory admin center.

Answer: AC

NEW QUESTION 4

HOTSPOT

Which users are members of ADGroup1 and ADGroup2? To answer, select the appropriate options in the answer area.

NOTE: Each correct selection is worth one point.

ADGroup1:

None	V
User1 and User2 only	
User2 and User4 only	
User3 and User4 only	
User1, User2, User3, and User4	

ADGroup2:

None	V
User1 and User2 only	
User2 and User4 only	
User3 and User4 only	
User1, User2, User3, and User4	

- A. Mastered
- B. Not Mastered

Answer: A

Explanation:

Reference:

<https://docs.microsoft.com/en-us/azure/active-directory/users-groups-roles/groups-dynamic-membership#supported-values>

NEW QUESTION 5

Which user passwords will User2 be prevented from resetting?

- A. User6 and User7
- B. User4 and User6
- C. User4 only
- D. User7 and User8
- E. User8 only

Answer: C

NEW QUESTION 6

HOTSPOT

Which policies apply to which devices? To answer, select the appropriate options in the answer area. NOTE: Each correct selection is worth one point.

Answer Area

DevicePolicy1:

None
Device1 only
Device3 only
Device2 and Device3 only
Device1 and Device3 only
Device1, Device2, and Device3

DevicePolicy2:

None
Device4 only
Device2 and Device4 only
Device2, Device3, and Device 4 only

- A. Mastered
- B. Not Mastered

Answer: A

Explanation:

Answer Area

DevicePolicy1:

None
Device1 only
Device3 only
Device2 and Device3 only
Device1 and Device3 only
Device1, Device2, and Device3

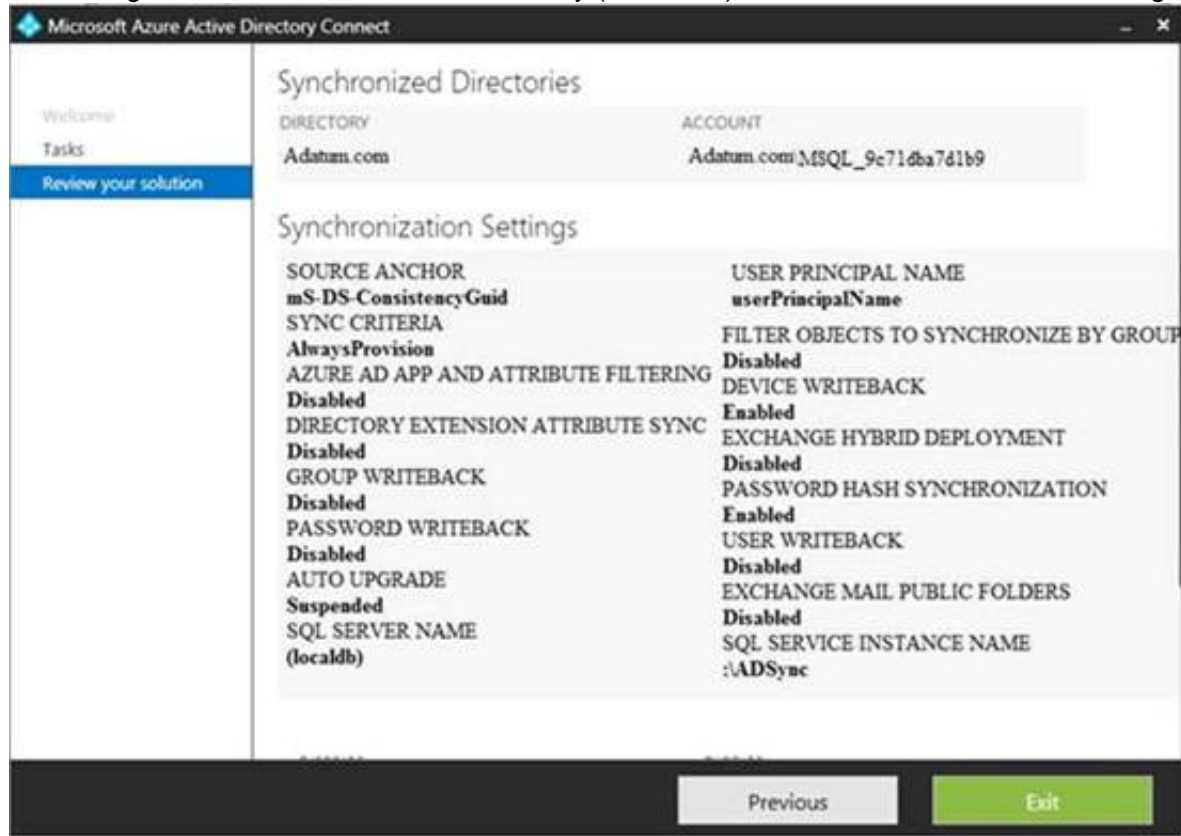
DevicePolicy2:

None
Device4 only
Device2 and Device4 only
Device2, Device3, and Device 4 only

NEW QUESTION 7

HOTSPOT

You configure Microsoft Azure Active Directory (Azure AD) Connect as shown in the following exhibit.



Use the drop-down menus to select the answer choice that completes each statement based on the information presented in the graphic.
NOTE: Each correct selection is worth one point.

If you reset a password in Azure AD, the password will [answer choice] .

be overwritten	V
be synced to Active Directory	
be subject to the Active Directory password policy	

If you join a computer to Azure AD,[answer choice].

an object will be provisioned in the Computers container	V
an object will be provisioned in the RegisteredDevices container	
the device object in Azure will be deleted during synchronization	

- A. Mastered
- B. Not Mastered

Answer: A

Explanation:
Reference:
https://docs.microsoft.com/en-us/azure/active-directory/hybrid/how-to-connect-device-writeback

NEW QUESTION 8

You have a Microsoft 365 subscription.
From the Microsoft 365 admin center, you create a new user. You plan to assign the Reports reader role to the user.
You need to see the permissions of the Reports reader role. Which admin center should you use?

- A. Azure Active Directory
- B. Cloud App Security
- C. Security & Compliance
- D. Microsoft 365

Answer: A

NEW QUESTION 9

You have a Microsoft 365 Enterprise E5 subscription.
You use Windows Defender Advanced Threat Protection (Windows Defender ATP). You plan to use Microsoft Office 365 Attack simulator.
What is a prerequisite for running Attack simulator?

- A. Enable multi-factor authentication (MFA)
- B. Configure Advanced Threat Protection (ATP)
- C. Create a Conditional Access App Control policy for accessing Office 365
- D. Integrate Office 365 Threat Intelligence and Windows Defender ATP

Answer: A

Explanation:

Reference:

<https://docs.microsoft.com/en-us/office365/securitycompliance/attack-simulator>

NEW QUESTION 10

You have a Microsoft 365 E5 subscription.

You implement Advanced Threat Protection (ATP) safe attachments policies for all users.

User reports that email messages containing attachments take longer than expected to be received. You need to reduce the amount of time it takes to receive email messages that contain attachments. The solution must ensure that all attachments are scanned for malware. Attachments that have malware must be blocked.

What should you do from ATP?

- A. Set the action to Block
- B. Add an exception
- C. Add a condition
- D. Set the action to Dynamic Delivery

Answer: D

Explanation:

Reference:

<https://docs.microsoft.com/en-us/office365/securitycompliance/dynamic-delivery-and-previewing>

NEW QUESTION 10

DRAG DROP

You have a Microsoft 365 subscription. All users use Microsoft Exchange Online. Microsoft 365 is configured to use the default policy settings without any custom rules. You manage message hygiene.

Where are suspicious email messages placed by default? To answer, drag the appropriate location to the correct message types. Each location may be used once, more than once, or not at all. You may need to drag the split bar between panes or scroll to view content.

Locations		Answer Area
ATP quarantine	Messages that contain word-filtered content:	Location
The Junk Email folder of a user's mailbox	Messages that are classified as phishing:	Location
The Clutter folder a user's mailbox		

- A. Mastered
- B. Not Mastered

Answer: A

Explanation:

	Answer Area
Messages that contain word-filtered content:	The Junk Email folder of a user's mailbox
Messages that are classified as phishing:	The Junk Email folder of a user's mailbox

NEW QUESTION 14

Your company has 500 computers.

You plan to protect the computers by using Windows Defender Advanced Threat Protection (Windows Defender ATP). Twenty of the computers belong to company executives.

You need to recommend a remediation solution that meets the following requirements: Windows Defender ATP administrators must manually approve all remediation for the executives

Remediation must occur automatically for all other users

What should you recommend doing from Windows Defender Security Center?

- A. Configure 20 system exclusions on automation allowed/block lists
- B. Configure two alert notification rules
- C. Download an offboarding package for the computers of the 20 executives
- D. Create two machine groups

Answer: D

Explanation:

Reference:

<https://docs.microsoft.com/en-us/windows/security/threat-protection/windows-defender-atp/machine-groups/windows-defender-advanced-threat-protection>

NEW QUESTION 19

HOTSPOT

Your network contains an on-premises Active Directory domain named contoso.com. The domain contains the groups shown in the following table.

Name	Type	Email address
Group1	Security Group – Domain Local	Group1@contoso.com
Group2	Security Group – Universal	None
Group3	Distribution Group – Global	None
Group4	Distribution Group – Universal	Group4@contoso.com

The domain is synced to a Microsoft Azure Active Directory (Azure AD) tenant that contains the groups shown in the following table.

Name	Type	Membership type
Group11	Security group	Assigned
Group12	Security group	Dynamic
Group13	Office	Assigned
Group14	Mail-enabled security group	Assigned

You create an Azure Information Protection policy named Policy1. You need to apply Policy1.

To which groups can you apply Policy1? To answer, select the appropriate options in the answer area. NOTE: Each correct selection is worth one point.

On-premises Active Directory groups:

Group4 only	V
Group1 and Group4 only	
Group3 and Group4 only	
Group1, Group3, and Group4 only	
Group1, Group2, Group3, and Group4	

Azure AD groups:

Group13 only	V
Group13 and Group14 only	
Group11 and Group12 only	
Group11, Group13, and Group14 only	
Group11, Group12, Group13, and Group14 only	

- A. Mastered
- B. Not Mastered

Answer: A

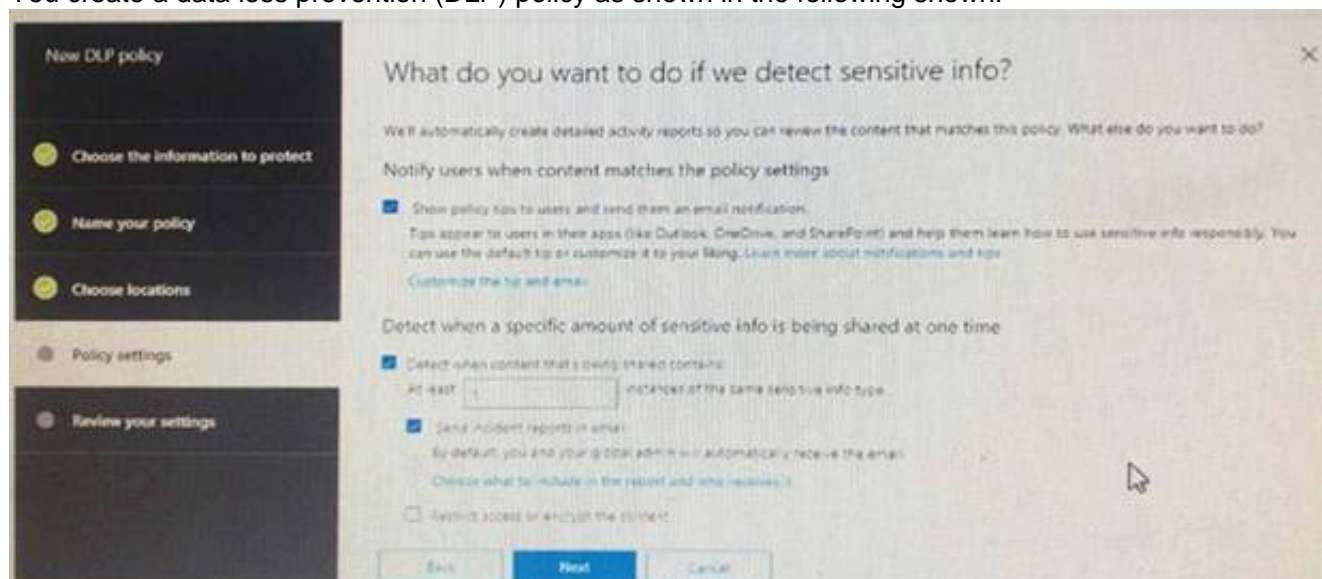
Explanation:

Reference:

<https://docs.microsoft.com/en-us/azure/information-protection/prepare>

NEW QUESTION 22

You create a data loss prevention (DLP) policy as shown in the following shown:



What is the effect of the policy when a user attempts to send an email messages that contains sensitive information?

- A. The user receives a notification and can send the email message
- B. The user receives a notification and cannot send the email message
- C. The email message is sent without a notification
- D. The email message is blocked silently

Answer: A

Explanation:

<https://docs.microsoft.com/en-us/office365/securitycompliance/data-loss-prevention-policies>

NEW QUESTION 25

You have a Microsoft 365 subscription.

You need to create data loss prevention (DLP) queries in Microsoft SharePoint Online to find sensitive data stored in sites.

Which type of site collection should you create first?

- A. Records Center
- B. Compliance Policy Center
- C. eDiscovery Center
- D. Enterprise Search Center
- E. Document Center

Answer: C

Explanation:

Reference:

<https://support.office.com/en-us/article/overview-of-data-loss-prevention-in-sharepoint-server-2016-80f907bbb944-448d-b83d-8fec4abcc24c>

NEW QUESTION 30

You have a Microsoft 365 subscription.

A user reports that changes were made to several files in Microsoft OneDrive.

You need to identify which files were modified by which users in the user's OneDrive. What should you do?

- A. From the Azure Active Directory admin center, open the audit log
- B. From the OneDrive admin center, select Device access
- C. From Security & Compliance, perform an eDiscovery search
- D. From Microsoft Cloud App Security, open the activity log

Answer: D

Explanation:

Reference:

<https://docs.microsoft.com/en-us/cloud-app-security/activity-filters>

NEW QUESTION 33

DRAG DROP

You have a Microsoft 365 subscription.

A customer requests that you provide her with all documents that reference her by name. You need to provide the customer with a copy of the content.

Which four actions should you perform in sequence? To answer, move the appropriate actions from the list of actions to the answer area and arrange them in the correct order.

Actions	Answer Area
Close the case.	
Regenerate a report.	
View the results.	
Export the results.	
Create a Data Subject Request (DSR) case.	
Save the search.	
Download the results.	

- A. Mastered
- B. Not Mastered

Answer: A

Explanation:

Reference:

<https://docs.microsoft.com/en-us/microsoft-365/compliance/gdpr-dsr-office365>

NEW QUESTION 37

You have a Microsoft 365 subscription. You need to ensure that users can apply retention labels to individual documents in their Microsoft SharePoint libraries.

Which two actions should you perform? Each correct answer presents part of the solution. NOTE: Each correct selection is worth one point.

- A. From the Cloud App Security admin center, create a file policy.
- B. From the SharePoint admin center, modify the Site Settings.
- C. From the SharePoint & Compliance admin center, create a label.
- D. From the SharePoint admin center, modify the records management settings.

E. From the Security & Compliance admin center, publish a label.

Answer: CE

Explanation:

Reference:

<https://docs.microsoft.com/en-us/office365/securitycompliance/protect-sharepoint-online-files-with-office-365-labels-and-dlp>

NEW QUESTION 42

You have a Microsoft 365 subscription.

The Global administrator role is assigned to your user account. You have a user named Admin1. You create an eDiscovery case named Case1.

You need to ensure that Admin1 can view the results of Case1. What should you do first?

A. From the Azure Active Directory admin center, assign a role group to Admin1.

B. From the Microsoft 365 admin center, assign a role to Admin1.

C. From Security & Compliance admin center, assign a role group to Admin1.

Answer: C

Explanation:

Reference:

<https://docs.microsoft.com/en-us/office365/securitycompliance/assign-ediscovery-permissions>

NEW QUESTION 44

You have a hybrid Microsoft 365 environment.

All computers run Windows 10 Enterprise and have Microsoft Office 365 ProPlus installed. All the

computers are joined to Active Directory.

You have a server named Server1 that runs Windows Server 2016. Server1 hosts the telemetry database. You need to prevent private details in the telemetry data from being transmitted to Microsoft.

What should you do?

A. On Server1, run readinessreportcreator.exe

B. Configure a registry on Server1

C. Configure a registry on the computers

D. On the computers, run tdadm.exe

Answer: C

NEW QUESTION 46

You have a Microsoft 365 subscription.

Yesterday, you created retention labels and published the labels to Microsoft Exchange Online mailboxes.

You need to ensure that the labels will be available for manual assignment as soon as possible. What should you do?

A. From the Security & Compliance admin center, create a label policy

B. From Exchange Online PowerShell, run Start-RetentionAutoTagLearning

C. From Exchange Online PowerShell, run Start-ManagedFolderAssistant

D. From the Security & Compliance admin center, create a data loss prevention (DLP) policy

Answer: C

NEW QUESTION 48

HOTSPOT

You have a Microsoft Azure Active Directory (Azure AD) tenant named contoso.com that contains the users shown in the following table.

Name	Member of	Multi-factor authentication (MFA) status
User1	Group1, Group2	Disabled
User2	Group1	Disabled

You create and enforce an Azure AD Identity Protection sign-in risk policy that has the following settings:

•Assignments: Include Group1, Exclude Group2

•Conditions: Sign in risk of Low and above

•Access: Allow access, Require password multi-factor authentication You need to identify how the policy affects User1 and User2.

What occurs when each user signs in from an anonymous IP address? To answer, select the appropriate options in the answer area.

NOTE: Each correct selection is worth one point.

User1:

	▼
Blocked	
Can sign in without MFA	
Prompted for MFA	

User2:

	▼
Blocked	
Can sign in without MFA	
Prompted for MFA	

- A. Mastered
 B. Not Mastered

Answer: A

Explanation:

User1:

	▼
Blocked	
Can sign in without MFA	
Prompted for MFA	

User2:

	▼
Blocked	
Can sign in without MFA	
Prompted for MFA	

NEW QUESTION 51

Note: This question is part of a series of questions that present the same scenario. Each question in the series contains a unique solution that might meet the stated goals. Some questions sets might have more than one correct solution, while others might not have a correct solution.

After you answer a question in this section, you will NOT be able to return to it. As a result, these questions will not appear in the review screen.

You have a Microsoft 365 subscription.

You have a user named User1. Several users have full access to the mailbox of User1.

Some email messages sent to User1 appear to have been read and deleted before the user viewed them.

When you search the audit log in Security & Compliance to identify who signed in to the mailbox of User1, the results are blank.

You need to ensure that you can view future sign-ins to the mailbox of User1.

You run the Set-AdminAuditLogConfig -AdminAuditLogEnabled \$true-AdminAuditLogCmdlets *Mailbox* command. Does that meet the goal?

- A. Yes
 B. No

Answer: B

Explanation:

References:

<https://docs.microsoft.com/en-us/powershell/module/exchange/policy-and-compliance-audit/setadmindauditlogconfig?view=exchange-ps>

NEW QUESTION 52

You have a Microsoft 365 subscription.

You have a Microsoft SharePoint Online site named Site1. The files in Site1 are protected by using Microsoft Azure Information Protection.

From the Security & Compliance admin center, you create a label that designates personal data. You need to auto-apply the new label to all the content in Site1.

What should you do first?

- A. From PowerShell, run Set-ManagedContentSettings.
 B. From PowerShell, run Set-ComplianceTag.
 C. From the Security & Compliance admin center, create a Data Subject Request (DSR).
 D. Remove Azure Information Protection from the Site1 files.

Answer: D

Explanation:

References:

<https://docs.microsoft.com/en-us/office365/securitycompliance/apply-labels-to-personal-data-in-office-365>

NEW QUESTION 53

You have a Microsoft 365 subscription.

You need to be notified by email whenever an administrator starts an eDiscovery search. What should you do from the Security & Compliance admin center?

- A. From Search & investigation, create a guided search.
- B. From Events, create an event.
- C. From Alerts, create an alert policy.
- D. From Search & Investigation, create an eDiscovery case.

Answer: C

Explanation:

References:

<https://docs.microsoft.com/en-us/office365/securitycompliance/alert-policies>

NEW QUESTION 55

You have a Microsoft 365 subscription.

You create and run a content search from the Security & Compliance admin center. You need to download the results of the content search.

What should you obtain first?

- A. an export key
- B. a password
- C. a certificate
- D. a pin

Answer: A

Explanation:

References:

<https://docs.microsoft.com/en-us/office365/securitycompliance/export-search-results>

NEW QUESTION 59

HOTSPOT

You have a Microsoft 365 subscription that include three users named User1, User2, and User3.

A file named File1.docx is stored in Microsoft OneDrive. An automated process updates File1.docx every minute.

You create an alert policy named Policy1 as shown in the following exhibit.

Policy1	
<div> <div>Edit policy</div> <div>Delete policy</div> </div>	
Status	<div> <div></div> <div>On</div> </div>
Description	Policy1 description
Severity	<div> <div></div> <div>Low</div> </div> <div>Edit</div>
Category	Threat management
Conditions	Activity is Copied file and File name is Like any of File1.docx
Aggregation	Aggregated
Threshold	10 activities
Window	60 minutes
Scope	All users
Email recipients	prvi@sk180920.onmicrosoft.com
Daily notifications limit	Do not send email notifications

Use the drop-down menus to select the answer choice that completes each statement based on the information presented in the graphic.

NOTE: Each correct selection is worth one point.

If User1 runs a scheduled task that copies File1.docx to a local folder every five minutes. [answer choice].

	▼
Policy1 will not be triggered	
Policy1 will be triggered after 45 minutes	
Policy1 will be triggered after 60 minutes	

If User1, User2, and User3 each run a scheduled task that copies File1.docx to a local folder every 10 minutes. [answer choice].

	▼
Policy1 will not be triggered	
Policy1 will be triggered within 20 minutes	
Policy1 will be triggered within 45 minutes	
Policy1 will be triggered after 60 minutes	

- A. Mastered
- B. Not Mastered

Answer: A

Explanation:

References:

<https://docs.microsoft.com/en-us/office365/securitycompliance/alert-policies>

NEW QUESTION 63

HOTSPOT

You have a Microsoft 365 subscription.

You create a retention label named Label1 as shown in the following exhibit.

You publish Label1 to SharePoint sites.

Use the drop-down menus to select the answer choice that completes each statement based on the information presented in the graphic.

NOTE: Each correct selection is worth one point.

If you create a file in a Microsoft SharePoint library on January 1, 2019, you can [answer choice].

	▼
never delete the file.	
delete the file before January 1, 2021.	
delete the file after January 1, 2021.	

If you create a file in a Microsoft SharePoint library on March 15, 2019, the file will [answer choice].

	▼
always remain in the library.	
remain in the library until you delete the file.	
be deleted automatically on March 15, 2021.	

- A. Mastered
- B. Not Mastered

Answer: A

Explanation:

References:

<https://docs.microsoft.com/en-us/office365/securitycompliance/labels>

NEW QUESTION 65

You have a Microsoft 365 subscription.

You need to ensure that users can manually designate which content will be subject to data loss prevention (DLP) policies.

What should you create first?

- A. A retention label in Microsoft Office 365
- B. A custom sensitive information type
- C. A Data Subject Request (DSR)
- D. A safe attachments policy in Microsoft Office 365

Answer: C

Explanation:

References:

<https://docs.microsoft.com/en-us/office365/securitycompliance/manage-gdpr-data-subject-requests-with-thedsr-case-tool#more-information-about-using-the-dsr-case-tool>

NEW QUESTION 69

DRAG DROP

You have a Microsoft 365 E5 subscription.

All computers run Windows 10 and are onboarded to Windows Defender Advanced Threat Protection (Windows Defender ATP).

You create a Windows Defender machine group named MachineGroup1.

You need to enable delegation for the security settings of the computers in MachineGroup1.
Which three actions should you perform in sequence? To answer, move the appropriate actions from the list of actions to the answer area and arrange them in the correct order.

Actions

From Windows Defender Security Center, create a role.

From Windows Defender Security Center, configure the permissions for MachineGroup1.

From the Azure portal, create an RBAC role.

From the Microsoft Azure portal, create an Azure Active Directory (Azure AD) group.

From Azure Cloud Shell, run the Add-HsolRoleMember cmdlet.

Answer Area

- A. Mastered
- B. Not Mastered

Answer: A

Explanation:

Actions

From Windows Defender Security Center, create a role.

From Windows Defender Security Center, configure the permissions for MachineGroup1.

From the Azure portal, create an RBAC role.

From the Microsoft Azure portal, create an Azure Active Directory (Azure AD) group.

From Azure Cloud Shell, run the Add-HsolRoleMember cmdlet.

Answer Area

From Windows Defender Security Center, configure the permissions for MachineGroup1.

From the Microsoft Azure portal, create an Azure Active Directory (Azure AD) group.

From the Azure portal, create an RBAC role.

NEW QUESTION 74

You have a hybrid Microsoft Exchange Server organization. All users have Microsoft 365 E5 licenses. You plan to implement an Advanced Threat Protection (ATP) anti-phishing policy. You need to enable mailbox intelligence for all users. What should you do first?

- A. Configure attribute filtering in Microsoft Azure Active Directory Connect (Azure AD Connect).
- B. Purchase the ATP add-on.
- C. Select Directory extension attribute sync in Microsoft Azure Active Directory Connect (Azure AD Connect).
- D. Migrate the on-premises mailboxes to Exchange Online.

Answer: B

NEW QUESTION 77

Note: This question is part of a series of questions that present the same scenario. Each question in the series contains a unique solution that might meet the stated goals. Some questions sets might have more than one correct solution, while others might not have a correct solution.
After you answer a question in this section, you will NOT be able to return to it. As a result, these questions will not appear in the review screen.
You have an on-premises Active Directory domain named contoso.com.
You install and run Azure AD Connect on a server named Server1 that runs Windows Server. You need to view Azure AD Connect events.
You use the System event log on Server1. Does that meet the goal?

- A. Yes
- B. No

Answer: B

Explanation:

References:
<https://support.pingidentity.com/s/article/PingOne-How-to-troubleshoot-an-AD-Connect-Instance>

NEW QUESTION 81

.....

THANKS FOR TRYING THE DEMO OF OUR PRODUCT

Visit Our Site to Purchase the Full Set of Actual MS-500 Exam Questions With Answers.

We Also Provide Practice Exam Software That Simulates Real Exam Environment And Has Many Self-Assessment Features. Order the MS-500 Product From:

<https://www.2passeasy.com/dumps/MS-500/>

Money Back Guarantee

MS-500 Practice Exam Features:

- * MS-500 Questions and Answers Updated Frequently
- * MS-500 Practice Questions Verified by Expert Senior Certified Staff
- * MS-500 Most Realistic Questions that Guarantee you a Pass on Your FirstTry
- * MS-500 Practice Test Questions in Multiple Choice Formats and Updatesfor 1 Year