

Exam Questions 350-901

Developing Applications using Cisco Core Platforms & APIs

<https://www.2passeasy.com/dumps/350-901/>



NEW QUESTION 1

A cloud native project is being worked on in which all source code and dependencies are written in Python, Ruby, and/or JavaScript. A change in code triggers a notification to the CI/CD tool to run the CI/CD pipeline.

Which step should be omitted from the pipeline?

- A. Deploy the code to one or more environments, such as staging and/or production.
- B. Build one of more containers that package up code and all its dependencies.
- C. Compile code.
- D. Run automated tests to validate the correctness.

Answer: A

NEW QUESTION 2

Which two statements are considered best practices according to the 12-factor app methodology for application design? (Choose two.)

- A. Application code writes its event stream to stdout.
- B. Application log streams are archived in multiple replicated databases.
- C. Application log streams are sent to log indexing and analysis systems.
- D. Application code writes its event stream to specific log files.
- E. Log files are aggregated into a single file on individual nodes.

Answer: AD

NEW QUESTION 3

Where should distributed load balancing occur in a horizontally scalable architecture?

- A. firewall-side/policy load balancing
- B. network-side/central load balancing
- C. service-side/remote load balancing
- D. client-side/local load balancing

Answer: B

NEW QUESTION 4

Which two data encoding techniques are supported by gRPC? (Choose two.)

- A. XML
- B. JSON
- C. ASCII
- D. ProtoBuf
- E. YAML

Answer: BE

NEW QUESTION 5

A developer has completed the implementation of a REST API, but when it is executed, it returns a 401 error message. What must be done on the API to resolve the issue?

- A. Access permission to the resource must be granted, before the request.
- B. Configure new valid credentials.
- C. The requested API endpoint does not exist, and the request URL must be changed.
- D. Additional permission must be granted before the request can be submitted.

Answer: D

NEW QUESTION 6

User report that they can no longer process transactions with the online ordering application, and the logging dashboard is displaying these messages.

Fri Jan 10 19:37:31.123 EST 2020 [FRONTEND] INFO: Incoming request to add item to cart from user 45834534858 Fri Jan 10 19:37:31 247 EST 2020

[BACKEND] INFO: Attempting to add item to cart

Fri Jan 10 19:37:31 250 EST 2020 [BACKEND] ERROR: Failed to add item: MYSQLDB ERROR: Connection refused What is causing the problem seen in these log messages?

- A. The database server container has crashed.
- B. The backend process is overwhelmed with too many transactions.
- C. The backend is not authorized to commit to the database.
- D. The user is not authorized to add the item to their cart.

Answer: A

NEW QUESTION 7

An application uses OAuth to get access to several API resources on behalf of an end user. What are two valid parameters to send to the authorization server as part of the first step of an authorization code grant flow? (Choose two.)

- A. URI to which the authorization server will send the user-agent back when access is granted or denied
- B. list of the API resources that the application is requesting to access

- C. secret that was generated by the authorization server when the application registered as an OAuth integration
- D. list of scopes that correspond to the API resources to which the application is requesting to access
- E. name of the application under which the application registered as an OAuth integration

Answer: AC

NEW QUESTION 8

The UCS Python SDK includes modules for Service Profile template creation. Which two UCS Service Profile template types are supported? (Choose two.)

- A. initial-template
- B. updating-template
- C. abstract-template
- D. attached-template
- E. base-template

Answer: AB

NEW QUESTION 9

Click on the GET Resource button above to view resources that will help with this question.

An engineer is managing a DC with 6000 Cisco UCS servers installed and running. The engineer has been asked to identify all resources where the model is in the UCSB family and the available memory is less than or equal to 5 GB.

Which REST API call accomplishes this task?

- A. GET/api/v1/compute/RackUnits?\$select=Vendor,Model,Serial&\$filter=not(Model eq 'UCSC') and AvailableMemory le 5000
- B. GET/api/v1/compute/RackUnits?\$select=Vendor,Model,Serial&\$filter=Model eq 'UCSB' and AvailableMemory lt 5000
- C. GET/api/v1/compute/RackUnits?\$select=Vendor,Model,Serial&\$filter=contains(Model, UCSB') and AvailableMemory lt 5000
- D. GET/api/v1/compute/RackUnits?\$select=Vendor,Model,Serial&\$filter=contains(Model, UCSB') and AvailableMemory le 5000

Answer: D

NEW QUESTION 10

AppGigabitEthernet interface is used as data port for a container on a Cisco Catalyst 9000 Series Switch. Which two interface configuration options should be used? (Choose two.)

- A. trunk interface
- B. bridged virtual interface
- C. SPAN port
- D. management interface
- E. subinterface

Answer: AC

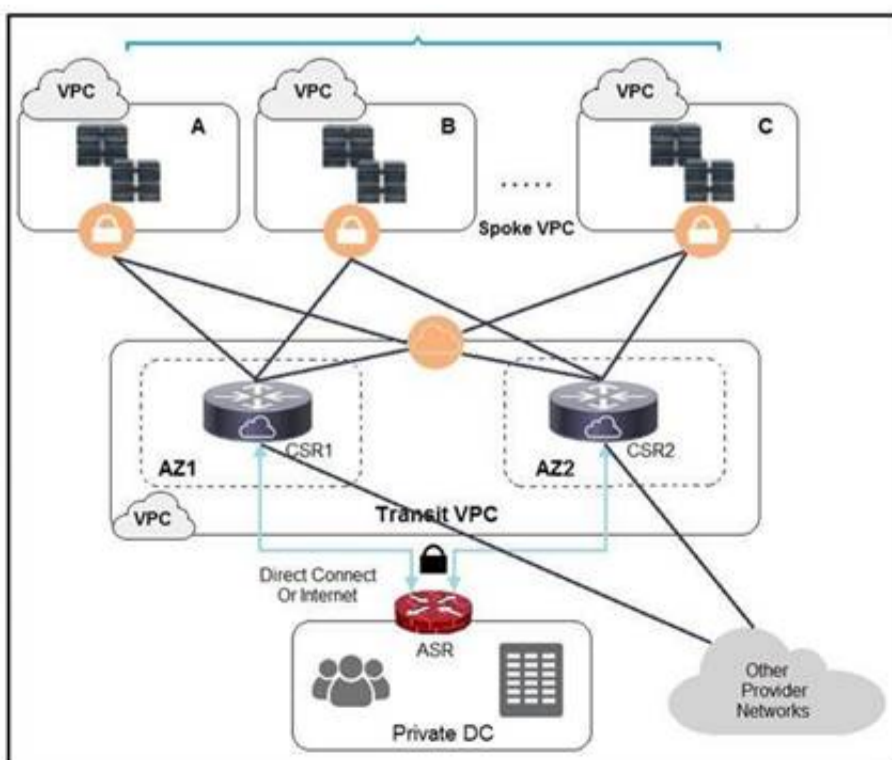
NEW QUESTION 10

Which two types of storage are supported for app hosting on a Cisco Catalyst 9000 Series Switch? (Choose two.)

- A. external USB storage
- B. internal SSD
- C. CD-ROM
- D. SD-card
- E. bootflash

Answer: AB

NEW QUESTION 14



Refer to the exhibit. A company has extended networking from the data center to the cloud through Transit VPC. Which two statements describe the benefits of

this approach? (Choose two.)

- A. Dynamic routing combined with multi-AZ- deployment creates a robust network infrastructure.
- B. VPC virtual gateways provide highly available connections to virtual networks.
- C. Dedicated VPC simplifies load balancing by combining internal and external web services.
- D. VPC virtual gateways provide more secure connections to virtual networks.
- E. Dedicated VPC simplifies routing by not combining this service with other shared services.

Answer: BD

NEW QUESTION 19

A developer has just completed the configuration of an API that connects sensitive internal systems. Based on company policies, the security of the data is a high priority. Which approach must be taken to secure API keys and passwords?

- A. Embed them directly in the code.
- B. Store them in a hidden file.
- C. Store them inside the source tree of the application.
- D. Change them periodically.

Answer: D

NEW QUESTION 21

```
FROM alpine:3.7
RUN apk add --no-cache bash
```

Refer to the exhibit. Which additional line results in the output of Test 1 upon execution of the docker run --rm devnet 1 command in a Dockerfile with this content?

- A. CMD ["/bin/echo", "Test"]
- B. RUN ["/bin/echo", "Test"]
- C. ENTRYPOINT ["/bin/echo", "Test"]
- D. CMD ["/bin/echo Test"]

Answer: A

NEW QUESTION 25

Which two strategies are used to protect personally identifiable information? (Choose two.)

- A. Encrypt data in transit.
- B. Encrypt hash values of data.
- C. Encrypt data at rest.
- D. Only hash usernames and passwords for efficient lookup.
- E. Only encrypt usernames and passwords for efficient lookup.

Answer: AB

NEW QUESTION 28

```
open_file = open("text_file.txt", "r")
read_file = open_file.read()
print(read_file)
```

Refer to the exhibit. a developer created the code, but it fails to execute. Which code snippet helps to identify the issue?

- A.

```
try:
    open_file = open("text_file.txt", "r")
    read_file = open_file.read()
    print(read_file)
except:
    print("File not there")
```
- B.

```
try:
    print("File not there")
except:
    open_file = open("text_file.txt", "r")
    read_file = open_file.read()
    print(read_file)
```
- C.

```
try:
    open_file = open("text_file.txt", "r")
    read_file = open_file.read()
    print(read_file)
except:
    print("File not there")
catch:
    error(read_file)
```

D.

```
open_file = open("text_file.txt", "r")
read_file = open_file.read()
try:
    print(read_file)
except:
    print("File not there")
```

Answer: C

NEW QUESTION 32

A heterogeneous network of vendors and device types needs automating for better efficiency and to enable future automated testing. The network consists of switches, routers, firewalls and load balancers from different vendors, however they all support the NETCONF/RESTCONF configuration standards and the YAML models with every feature the business requires. The business is looking for a buy versus build solution because they cannot dedicate engineering resources, and they need configuration diff and rollback functionality from day 1.

Which configuration management for automation tooling is needed for this solution?

- A. Ansible
- B. Ansible and Terraform
- C. NSO
- D. Terraform
- E. Ansible and NSO

Answer: E

NEW QUESTION 36

An automated solution is needed to configure VMs in numerous cloud provider environments to connect the environments to an SDWAN. The SDWAN edge VM is provided as an image in each of the relevant clouds and can be given an identity and all required configuration via cloud-init without needing to log into the VM once online.

Which configuration management and/or automation tooling is needed for this solution?

- A. Ansible
- B. Ansible and Terraform
- C. NSO
- D. Terraform
- E. Ansible and NSO

Answer: E

NEW QUESTION 38

.....

THANKS FOR TRYING THE DEMO OF OUR PRODUCT

Visit Our Site to Purchase the Full Set of Actual 350-901 Exam Questions With Answers.

We Also Provide Practice Exam Software That Simulates Real Exam Environment And Has Many Self-Assessment Features. Order the 350-901 Product From:

<https://www.2passeasy.com/dumps/350-901/>

Money Back Guarantee

350-901 Practice Exam Features:

- * 350-901 Questions and Answers Updated Frequently
- * 350-901 Practice Questions Verified by Expert Senior Certified Staff
- * 350-901 Most Realistic Questions that Guarantee you a Pass on Your FirstTry
- * 350-901 Practice Test Questions in Multiple Choice Formats and Updatesfor 1 Year