

Cisco

Exam Questions 350-201

Performing CyberOps Using Core Security Technologies (CBRCOR)



NEW QUESTION 1

The physical security department received a report that an unauthorized person followed an authorized individual to enter a secured premise. The incident was documented and given to a security specialist to analyze. Which step should be taken at this stage?

- A. Determine the assets to which the attacker has access
- B. Identify assets the attacker handled or acquired
- C. Change access controls to high risk assets in the enterprise
- D. Identify movement of the attacker in the enterprise

Answer: D

NEW QUESTION 2

The incident response team receives information about the abnormal behavior of a host. A malicious file is found being executed from an external USB flash drive. The team collects and documents all the necessary evidence from the computing resource. What is the next step?

- A. Conduct a risk assessment of systems and applications
- B. Isolate the infected host from the rest of the subnet
- C. Install malware prevention software on the host
- D. Analyze network traffic on the host's subnet

Answer: B

NEW QUESTION 3

Drag and drop the telemetry-related considerations from the left onto their cloud service models on the right.

Answer Area

Logs, alerts, and events for application performance monitoring and application health are configurable by the customer	SaaS
The customer controls limited application configuration settings and obtaining logs for security monitoring may be limited	PaaS
Logs, alerts, and events for operating systems are configurable by the customer	IaaS

- A. Mastered
- B. Not Mastered

Answer: A

Explanation:

Answer Area

Logs, alerts, and events for application performance monitoring and application health are configurable by the customer	The customer controls limited application configuration settings and obtaining logs for security monitoring may be limited
The customer controls limited application configuration settings and obtaining logs for security monitoring may be limited	Logs, alerts, and events for operating systems are configurable by the customer
Logs, alerts, and events for operating systems are configurable by the customer	Logs, alerts, and events for application performance monitoring and application health are configurable by the customer

NEW QUESTION 4

Drag and drop the mitigation steps from the left onto the vulnerabilities they mitigate on the right.

Answer Area

- Restrict administrative access to operating systems and applications in accordance with job duties
- Use multifactor authentication for remote access or accessing sensitive information
- Change backup and store software and configuration settings for at least three months
- Patch applications including flash, web browsers, and PDF viewers
- Utilize application control to stop malware delivery and execution

- End-user desktops allow the execution of non-approved applications that include malicious code
- Application security vulnerabilities can be used to execute malicious code
- Privilege accounts have full rights to information systems
- User verification is weak and based on a single factor
- Data or access loss occurs due to cybersecurity incidents

- A. Mastered
- B. Not Mastered

Answer: A

Explanation:

Answer Area

- Restrict administrative access to operating systems and applications in accordance with job duties
- Use multifactor authentication for remote access or accessing sensitive information
- Change backup and store software and configuration settings for at least three months
- Patch applications including flash, web browsers, and PDF viewers
- Utilize application control to stop malware delivery and execution

- Utilize application control to stop malware delivery and execution
- Patch applications including flash, web browsers, and PDF viewers
- Restrict administrative access to operating systems and applications in accordance with job duties
- Use multifactor authentication for remote access or accessing sensitive information
- Change backup and store software and configuration settings for at least three months

NEW QUESTION 5

Employees report computer system crashes within the same week. An analyst is investigating one of the computers that crashed and discovers multiple shortcuts in the system's startup folder. It appears that the shortcuts redirect users to malicious URLs. What is the next step the engineer should take to investigate this case?

- A. Remove the shortcut files
- B. Check the audit logs
- C. Identify affected systems
- D. Investigate the malicious URLs

Answer: C

NEW QUESTION 6

Drag and drop the NIST incident response process steps from the left onto the actions that occur in the steps on the right.

Answer Area

Eradicate	Analyze and document the breach, and strengthen systems against future attacks
Contain	Conduct incident response role training for employees
Post-Incident Handling	Determine where the breach started and prevent the attack from spreading
Recover	Determine how the breach was discovered and the areas that were impacted
Analyze	Eliminate the root cause of the breach and apply updates to the system
Prepare	Get systems and business operations up and running, and ensure that the same type of attack does not occur again

- A. Mastered
- B. Not Mastered

Answer: A

Explanation:

Answer Area

Eradicate	Contain
Contain	Prepare
Post-Incident Handling	Recover
Recover	Analyze
Analyze	Eradicate
Prepare	Post-Incident Handling

NEW QUESTION 7

A security architect is working in a processing center and must implement a DLP solution to detect and prevent any type of copy and paste attempts of sensitive data within unapproved applications and removable devices. Which technical architecture must be used?

- A. DLP for data in motion
- B. DLP for removable data
- C. DLP for data in use
- D. DLP for data at rest

Answer: C

NEW QUESTION 8

Refer to the exhibit.

```
<employees>
  <employee>
    <lastname>Smith</lastname>
    <firstname>Richard</firstname>
  </employee>
  <employee>
    <lastname>Witzel</lastname>
    <firstname>Sevan</firstname>
  </employee>
</employees>
```

Which data format is being used?

- A. JSON
- B. HTML
- C. XML
- D. CSV

Answer: B

NEW QUESTION 9

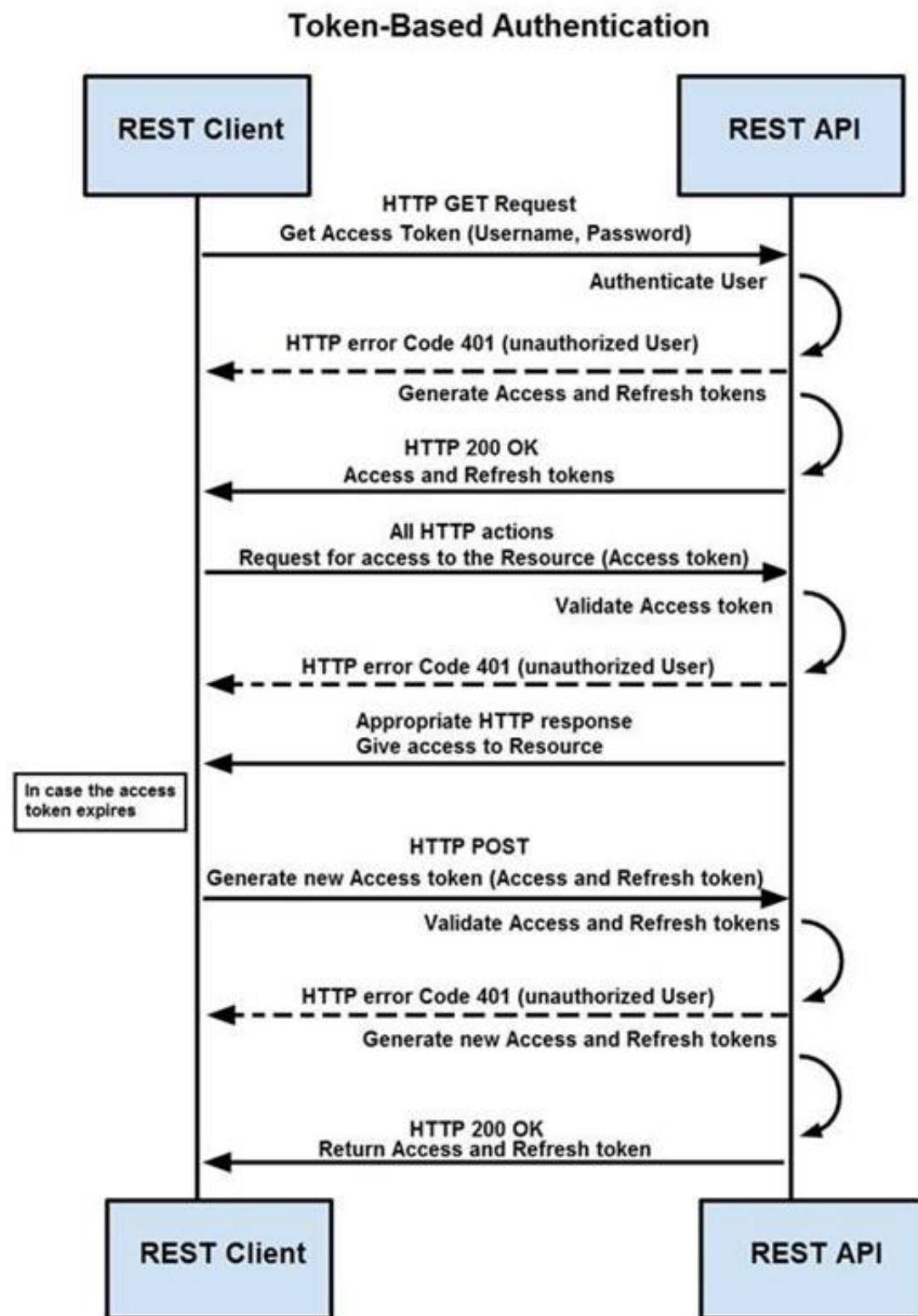
What is a limitation of cyber security risk insurance?

- A. It does not cover the costs to restore stolen identities as a result of a cyber attack
- B. It does not cover the costs to hire forensics experts to analyze the cyber attack
- C. It does not cover the costs of damage done by third parties as a result of a cyber attack
- D. It does not cover the costs to hire a public relations company to help deal with a cyber attack

Answer: A

NEW QUESTION 10

Refer to the exhibit.



How are tokens authenticated when the REST API on a device is accessed from a REST API client?

- A. The token is obtained by providing a password
- B. The REST client requests access to a resource using the access token
- C. The REST API validates the access token and gives access to the resource.
- D. The token is obtained by providing a password
- E. The REST API requests access to a resource using the access token, validates the access token, and gives access to the resource.
- F. The token is obtained before providing a password
- G. The REST API provides resource access, refreshes tokens, and returns them to the REST client
- H. The REST client requests access to a resource using the access token.
- I. The token is obtained before providing a password
- J. The REST client provides access to a resource using the access token
- K. The REST API encrypts the access token and gives access to the resource.

Answer: D

NEW QUESTION 10

An engineer has created a bash script to automate a complicated process. During script execution, this error occurs: permission denied. Which command must be added to execute this script?

- A. `chmod +x ex.sh`
- B. `source ex.sh`
- C. `chroot ex.sh`
- D. `sh ex.sh`

Answer: A

NEW QUESTION 13

An engineer is going through vulnerability triage with company management because of a recent malware outbreak from which 21 affected assets need to be patched or remediated. Management decides not to prioritize fixing the assets and accepts the vulnerabilities. What is the next step the engineer should take?

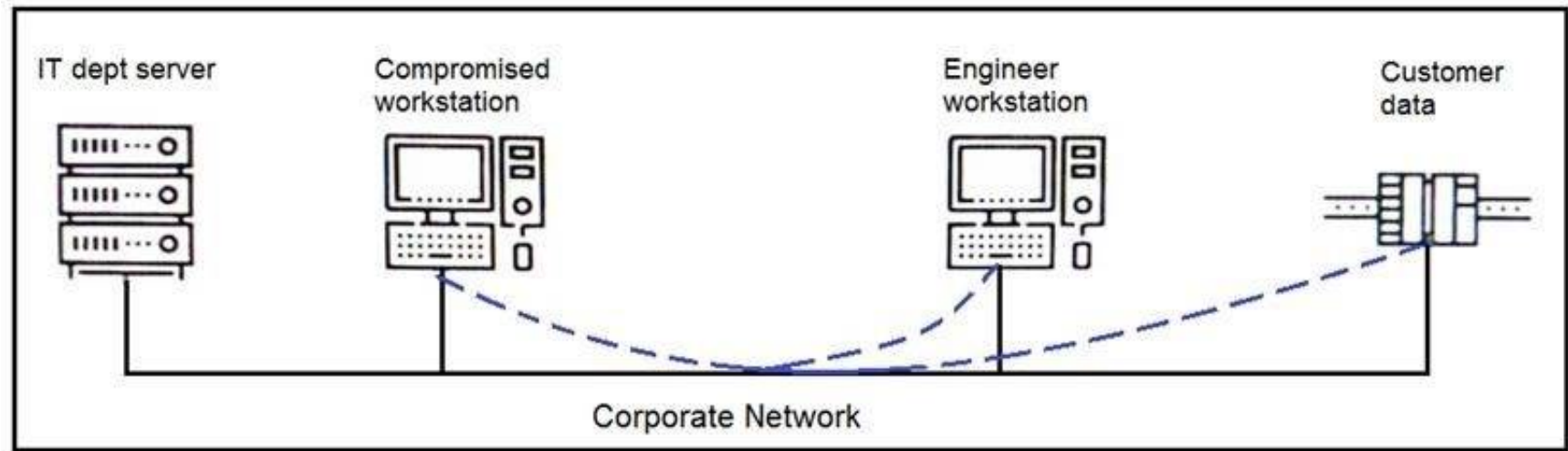
- A. Investigate the vulnerability to prevent further spread
- B. Acknowledge the vulnerabilities and document the risk
- C. Apply vendor patches or available hot fixes

D. Isolate the assets affected in a separate network

Answer: D

NEW QUESTION 14

Refer to the exhibit.



An engineer received a report that an attacker has compromised a workstation and gained access to sensitive customer data from the network using insecure protocols. Which action prevents this type of attack in the future?

- A. Use VLANs to segregate zones and the firewall to allow only required services and secured protocols
- B. Deploy a SOAR solution and correlate log alerts from customer zones
- C. Deploy IDS within sensitive areas and continuously update signatures
- D. Use syslog to gather data from multiple sources and detect intrusion logs for timely responses

Answer: A

NEW QUESTION 15

An organization lost connectivity to critical servers, and users cannot access business applications and internal websites. An engineer checks the network devices to investigate the outage and determines that all devices are functioning. Drag and drop the steps from the left into the sequence on the right to continue investigating this issue. Not all options are used.

Answer Area

run show access-list	Step 1
run show config	Step 2
validate the file MD5	Step 3
generate the core file	Step 4
verify the image file hash	
check the memory logs	
verify the memory state	

- A. Mastered
- B. Not Mastered

Answer: A

Explanation:

Answer Area

run show access-list	run show config
run show config	check the memory logs
validate the file MD5	verify the memory state
generate the core file	run show access-list
verify the image file hash	
check the memory logs	
verify the memory state	

NEW QUESTION 20

An audit is assessing a small business that is selling automotive parts and diagnostic services. Due to increased customer demands, the company recently started to accept credit card payments and acquired a POS terminal. Which compliance regulations must the audit apply to the company?

- A. HIPAA
- B. FISMA
- C. COBIT
- D. PCI DSS

Answer: D

NEW QUESTION 25

A customer is using a central device to manage network devices over SNMPv2. A remote attacker caused a denial of service condition and can trigger this vulnerability by issuing a GET request for the ciscoFlashMIB OID on an affected device. Which should be disabled to resolve the issue?

- A. SNMPv2
- B. TCP small services
- C. port UDP 161 and 162
- D. UDP small services

Answer: A

NEW QUESTION 26

An engineer is moving data from NAS servers in different departments to a combined storage database so that the data can be accessed and analyzed by the organization on-demand. Which data management process is being used?

- A. data clustering
- B. data regression
- C. data ingestion
- D. data obfuscation

Answer: A

NEW QUESTION 28

A threat actor has crafted and sent a spear-phishing email with what appears to be a trustworthy link to the site of a conference that an employee recently attended. The employee clicked the link and was redirected to a malicious site through which the employee downloaded a PDF attachment infected with ransomware. The employee opened the attachment, which exploited vulnerabilities on the desktop. The ransomware is now installed and is calling back to its command and control server. Which security solution is needed at this stage to mitigate the attack?

- A. web security solution
- B. email security solution
- C. endpoint security solution
- D. network security solution

Answer: D

NEW QUESTION 29

An engineer receives an incident ticket with hundreds of intrusion alerts that require investigation. An analysis of the incident log shows that the alerts are from

trusted IP addresses and internal devices. The final incident report stated that these alerts were false positives and that no intrusions were detected. What action should be taken to harden the network?

- A. Move the IPS to after the firewall facing the internal network
- B. Move the IPS to before the firewall facing the outside network
- C. Configure the proxy service on the IPS
- D. Configure reverse port forwarding on the IPS

Answer: C

NEW QUESTION 34

Refer to the exhibit.

```
def map_to_lowercase_letter(s):
    return ord('a') + ((s-ord('a')) % 26)
def next_domain(domain):
    dl = [ord(x) for x in list(domain)]
    dl[0] = map_to_lowercase_letter(dl[0] + dl[3])
    dl[1] = map_to_lowercase_letter(dl[0] + 2*dl[1])
    dl[2] = map_to_lowercase_letter(dl[0] + dl[2] - 1)
    dl[3] = map_to_lowercase_letter(dl[1] + dl[2] + dl[3])
    return ''.join([chr(x) for x in dl])
def isBanjoriTail(seed):
    for c0 in xrange(97,123):
        for c1 in xrange(97, 123):
            for c2 in xrange(97,123):
                for c3 in xrange (97,123):
                    domain = chr(c0)+chr(c1)+chr(c2)+chr(c3)
                    domain = next_domain(domain)
                    if seed.startswith(domain):
                        return False
    return True
seeds = {
    "nhcisatformalisticirekb.com",
    "egfesatformalisticirekb.com",
    "qwfusatformalisticirekb.com",
    "eijhsatformalisticirekb.com",
    "siowsatformalisticirekb.com",
    "dhansatformalisticirekb.com",
    "zvogsatformalisticirekb.com",
    "yaewsatformalisticirekb.com",
    "wgxfusatformalisticirekb.com",
    "vfxlsatformalisticirekb.com",
    "usjssatformalisticirekb.com",
    "selzsatformalisticirekb.com",
    "nzjqsatformalisticirekb.com",
    "kencsatformalisticirekb.com",
    "fzkxsatformalisticirekb.com",
    "babysatformalisticirekb.com",
}
for seed in seeds:
    print seed,isBanjonTail(seed)
```

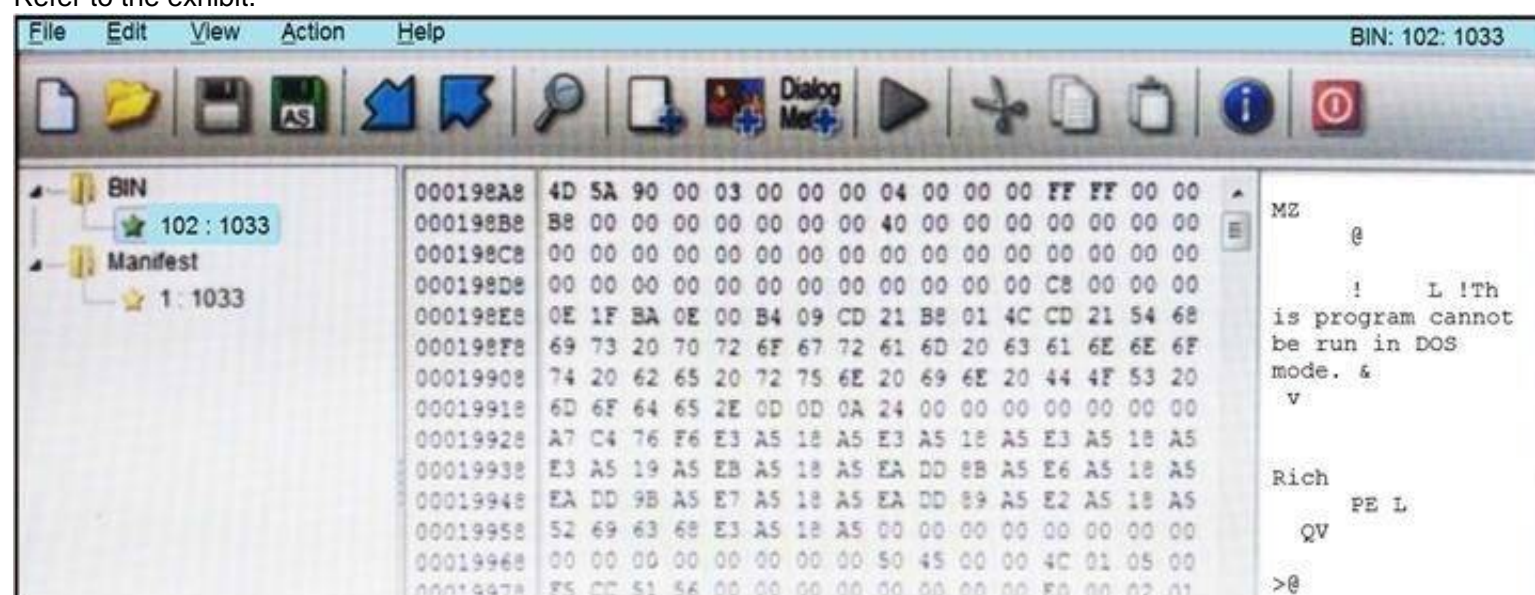
What results from this script?

- A. Seeds for existing domains are checked
- B. A search is conducted for additional seeds
- C. Domains are compared to seed rules
- D. A list of domains as seeds is blocked

Answer: B

NEW QUESTION 38

Refer to the exhibit.



An engineer is reverse engineering a suspicious file by examining its resources. What does this file indicate?

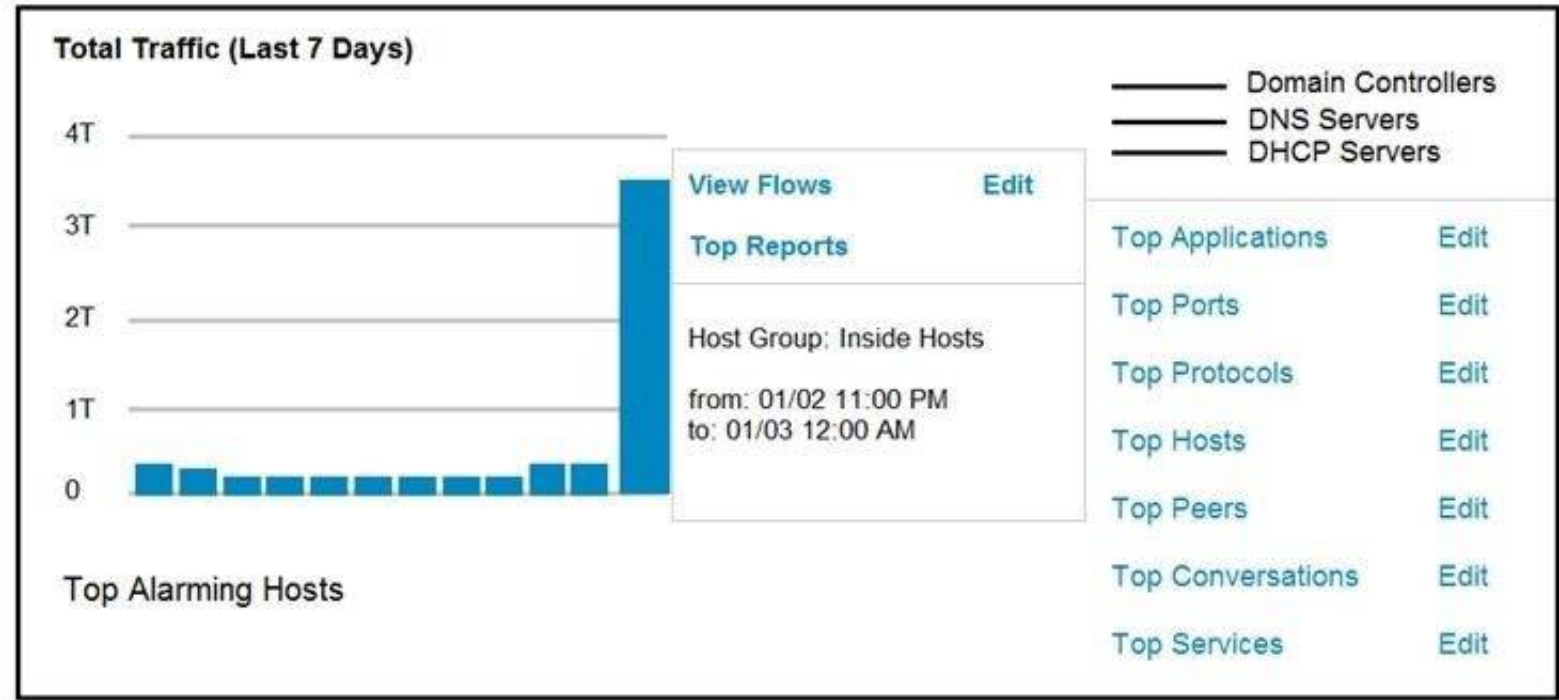
- A. a DOS MZ executable format

- B. a MS-DOS executable archive
- C. an archived malware
- D. a Windows executable file

Answer: D

NEW QUESTION 41

Refer to the exhibit.



An engineer notices a significant anomaly in the traffic in one of the host groups in Cisco Secure Network Analytics (Stealthwatch) and must analyze the top data transmissions. Which tool accomplishes this task?

- A. Top Peers
- B. Top Hosts
- C. Top Conversations
- D. Top Ports

Answer: B

NEW QUESTION 43

Refer to the exhibit.



No.	Time	Source	Destination	Protocol	Length	Info
2389	848.622259	10.31.133.235	10.25.129.5	TCP	66	61118 → 80 [SYN] Seq=0 Win=8192
2389	848.622273	10.25.129.5	10.31.133.235	TCP	66	80 → 61118 [SYN, ACK] Seq=0 Acc=
2389	848.622351	10.31.133.235	10.25.129.5	TCP	60	30745 → 80 [RST] Seq=1 Win=0 Len=0
2389	848.622719	10.31.133.235	10.25.129.5	TCP	60	30746 → 80 [RST] Seq=1 Win=0 Len=0
2389	848.622889	10.31.133.235	10.25.129.5	TCP	60	30748 → 80 [RST] Seq=1 Win=0 Len=0
2389	848.623250	10.31.133.235	10.25.129.5	TCP	60	30747 → 80 [RST] Seq=1 Win=0 Len=0
2389	848.623545	10.31.133.235	10.25.129.5	TCP	60	30749 → 80 [RST] Seq=1 Win=0 Len=0
2389	848.623882	10.31.133.235	10.25.129.5	TCP	60	30750 → 80 [RST] Seq=1 Win=0 Len=0
2389	848.624295	10.31.133.235	10.25.129.5	TCP	60	30751 → 80 [RST] Seq=1 Win=0 Len=0
2389	848.624880	10.31.133.235	10.25.129.5	TCP	60	30752 → 80 [RST] Seq=1 Win=0 Len=0
2389	848.625424	10.31.133.235	10.25.129.5	TCP	60	30753 → 80 [RST] Seq=1 Win=0 Len=0
2389	848.625729	10.31.133.235	10.25.129.5	TCP	60	30754 → 80 [RST] Seq=1 Win=0 Len=0
2389	848.626842	10.31.133.235	10.25.129.5	TCP	60	30755 → 80 [RST] Seq=1 Win=0 Len=0
2389	848.627352	10.31.133.235	10.25.129.5	TCP	60	30756 → 80 [RST] Seq=1 Win=0 Len=0

What is occurring in this packet capture?

- A. TCP port scan
- B. TCP flood
- C. DNS flood
- D. DNS tunneling

Answer: B

NEW QUESTION 48

What is a principle of Infrastructure as Code?

- A. System maintenance is delegated to software systems
- B. Comprehensive initial designs support robust systems
- C. Scripts and manual configurations work together to ensure repeatable routines
- D. System downtime is grouped and scheduled across the infrastructure

Answer: B

NEW QUESTION 52

A threat actor attacked an organization's Active Directory server from a remote location, and in a

thirty-minute timeframe, stole the password for the administrator account and attempted to access 3 company servers. The threat actor successfully accessed the first server that contained sales data, but no files were downloaded. A second server was also accessed that contained marketing information and 11 files were downloaded. When the threat actor accessed the third server that contained corporate financial data, the session was disconnected, and the administrator's account was disabled. Which activity triggered the behavior analytics tool?

- A. accessing the Active Directory server
- B. accessing the server with financial data
- C. accessing multiple servers
- D. downloading more than 10 files

Answer: C

NEW QUESTION 54

Refer to the exhibit.

Asset	Threat	Vulnerability	Likelihood (1-10)	Impact (1-10)
Servers	Natural Disasters – Flooding	Server Room is on the zero floor	3	10
Secretary Workstation	Usage of illegitimate software	Inadequate control of software	7	6
Payment Process	Eavesdropping, Misrouting/re-routing of messages	Unencrypted communications	5	10
Website	Website Intrusion	No IDS/IPS usage	6	8

Which asset has the highest risk value?

- A. servers
- B. website
- C. payment process
- D. secretary workstation

Answer: C

NEW QUESTION 59

.....

Thank You for Trying Our Product

We offer two products:

1st - We have Practice Tests Software with Actual Exam Questions

2nd - Questions and Answers in PDF Format

350-201 Practice Exam Features:

- * 350-201 Questions and Answers Updated Frequently
- * 350-201 Practice Questions Verified by Expert Senior Certified Staff
- * 350-201 Most Realistic Questions that Guarantee you a Pass on Your First Try
- * 350-201 Practice Test Questions in Multiple Choice Formats and Updates for 1 Year

100% Actual & Verified — Instant Download, Please Click
[Order The 350-201 Practice Test Here](#)