



HP

Exam Questions HPE0-V14

Building HPE Hybrid IT Solutions

NEW QUESTION 1

- (Exam Topic 1)

Match the speed and protocol with the appropriate component.

Component		Speed and Protocol
SFP+	<div></div>	10GbE
QSFP28	<div></div>	12Gb SAS
Mini-SAS HD 4x	<div></div>	100GbE

- A. Mastered
- B. Not Mastered

Answer: A

Explanation:

Component		Speed and Protocol
SFP+	<div>SFP+</div>	10GbE
QSFP28	<div>Mini-SAS HD 4x</div>	12Gb SAS
Mini-SAS HD 4x	<div>QSFP28</div>	100GbE

NEW QUESTION 2

- (Exam Topic 1)

Refer to the exhibit.

```
172.16.5.1 - PuTTY
K11-S14-A: admin> portshow 0/0/1
portIndex:      1
portName: port1
portHealth:      Fabric vision license not present. Please install the license and retry the operation.

Authentication: None
portDisableReason: None
portCFlags: 0x1
portFlags: 0x20b03 PRESENT ACTIVE F_PORT G_PORT U_PORT LOGICAL_ONLINE LOGIN NOELP ACCEPT FLOGI
LocalSwcFlags: 0x0
portType: 18.0
PDP Port: Port is licensed
portState: 1 Online
Protocol: FC
portPhys: 6 In_Sync portScn: 32 F_Port
port generation number: 0
state transition count: 1

portId: 010100
portIfId: 43020015
portWwn: 20:01:c4:f5:7c:b3:25:e1
portWwn of device(s) connected:
    56:c9:ce:90:20:50:68:01
Distance: normal
portSpeed: N8Gbps

Credit Recovery: Inactive
Aoq: Inactive
FAA: Inactive
F_Trunk: Inactive
LE domain: 0
Peer beacon: Off
```

The information shown is displayed for a Nimble array you are installing. The customer's administrator has asked you for the speed at which the Nimble ports are connecting to their SAN switches, and you have run the command shown to determine the number of gigabits per second used by this port connection. What speed does the exhibit indicate is in use?

- A. 18
- B. 32
- C. 6
- D. 8

Answer: C

NEW QUESTION 3

- (Exam Topic 1)

A customer has a new virtual environment. They selected HPE servers for the environment in order to achieve better performance for their applications. Which HPE feature enables the customer to achieve this server performance improvement?

- A. embedded application
- B. workload performance advisor
- C. workload profile
- D. Active Health System

Answer: B

NEW QUESTION 4

- (Exam Topic 1)

A customer needs a single, dual-processor server for an Enterprise Resource Planning solution for a single office. The customer application uses a mix of HDDs and SSDs and up to 3TB of RAM.

Which HPE Solution should you propose?

- A. HPE Synergy Solution
- B. HPE Apollo 2000 Server
- C. HPE ML350 Gen10
- D. HPE ML110 Gen10

Answer: B

NEW QUESTION 5

- (Exam Topic 1)

You are creating a configuration for a new Nimble HF40 array.

Which tool should you use to ensure that you include adequate cache in the configuration?

- A. HPE NinjaSTARS
- B. HPE Storage Sizer
- C. HPE OneView
- D. HPE SPOCK

Answer: A

NEW QUESTION 6

- (Exam Topic 1)

A Network administrator connects two switches together with multiple links of the same speed, duplex, and media type. The administrator expected the links to be aggregated, but they are not. The administrator confirmed that the ports are part of the appropriate link aggregation groups and that the permitted VLANs match. Switch A has the lower LACP System Priority.

Which LACP operation states describe the failure above?

- A. Switch A: Active; Switch B: Active
- B. Switch A: Active; Switch B: Passive
- C. Switch A: Passive; Switch B: Passive
- D. Switch A: Passive; Switch B: Active

Answer: C

NEW QUESTION 7

- (Exam Topic 1)

Indicate whether each management feature manages or monitors a single system or multiple systems.

Answer Area

			HPE 3PAR SSMC
ManagingMonitoring a Single System			HPE OneView Global Dashboard
Managing/Monitoring Multiple Systems			HPE Intelligent Provisioning
			HPE Smart Storage Administrator

- A. Mastered
- B. Not Mastered

Answer: A

Explanation:

Answer Area

	ManagingMonitoring a Single System	HPE 3PAR SSMC
ManagingMonitoring a Single System	Managing/Monitoring Multiple Systems	HPE OneView Global Dashboard
Managing/Monitoring Multiple Systems	ManagingMonitoring a Single System	HPE Intelligent Provisioning
	Managing/Monitoring Multiple Systems	HPE Smart Storage Administrator

NEW QUESTION 8

- (Exam Topic 1)

Which hardware and software components make up a Nimble dHCI infrastructure?

- A. HPE M-Series switch, HPE ProLiant DL servers, HPE Nimble, and VMware
- B. Aruba Switches, HPE Synergy, HPE Nimble, and VMware
- C. HPE M-Series switch, HPE ProLiant DL servers, HPE Nimble, and Hyper-V
- D. Aruba Switches, HPE Synergy, HPE Nimble, and Hyper-V

Answer: A

NEW QUESTION 9

- (Exam Topic 1)

Match each characteristic to the correct storage type.

Answer Area

DAS		Allows access to volumes over FCP and iSCSI protocols
NAS		Ability to share file-based storage across an Ethernet network
Storage Array		Allows shared block level access over a network
		JBOD storage connected to one server using SAS

- A. Mastered
B. Not Mastered

Answer: A

Explanation:

Answer Area

DAS	Storage Array	Allows access to volumes over FCP and iSCSI protocols
NAS	NAS	Ability to share file-based storage across an Ethernet network
Storage Array	Storage Array	Allows shared block level access over a network
	DAS	JBOD storage connected to one server using SAS

NEW QUESTION 10

- (Exam Topic 1)

Which protocol can be used to access a shared directory on a network-attached storage device?

- A. SNMP
B. SMB
C. FCP

Answer: B

NEW QUESTION 10

- (Exam Topic 1)

A customer is planning to deploy a new Top of Rack solution. They plan to use a stacking technology that meets the following requirements:
Support for Multi Chassis Link Aggregation in an active-active mode. The control plane must not be a single point of failure.
Rapid Fail-over. Unified Management.
They require a maximum of two switches per stack.
Which stacking technology meets the customer's requirements?

- A. HPE Intelligent Resilient Framework (IRF)
B. HPE Distributed Trunking
C. Aruba Virtual Switching Extension (VSX)
D. Aruba Virtual Switching Framework (VSF)

Answer: C

NEW QUESTION 13

- (Exam Topic 1)

Match each HPE solution to its optimal use case.

Select and Place:
Answer Area

HPE Solution		Use Case
HPE Proliant Microserver	<input type="text"/>	General Purpose Computing, Virtualization Clusters, Enterprise Applications
HPE Proliant ML/DL	<input type="text"/>	NAS Storage, File Sync and Share for Remote/Mobile users
HPE StoreEasy	<input type="text"/>	Remote Office, Low Cost, Quiet Operation, Office environment
HPE StoreOnce	<input type="text"/>	Space-efficient Backups, Backup Replication, Cloud-based Archiving

- A. Mastered
- B. Not Mastered

Answer: A

Explanation:

Select and Place:
Answer Area

HPE Solution		Use Case
HPE Proliant Microserver	HPE Proliant ML/DL	General Purpose Computing, Virtualization Clusters, Enterprise Applications
HPE Proliant ML/DL	HPE StoreEasy	NAS Storage, File Sync and Share for Remote/Mobile users
HPE StoreEasy	HPE Proliant Microserver	Remote Office, Low Cost, Quiet Operation, Office environment
HPE StoreOnce	HPE StoreOnce	Space-efficient Backups, Backup Replication, Cloud-based Archiving

NEW QUESTION 15

- (Exam Topic 1)

Match each characteristic to the appropriate RAID level.

Answer Area

RAID level		Characteristic
Raid0	<input type="text"/>	double parity striped across all disks
Raid1	<input type="text"/>	if one disk fails, all data is lost
Raid5	<input type="text"/>	requires a minimum of 3 disk drives
Raid6	<input type="text"/>	requires 50% of raw capacity for fault protection

- A. Mastered
- B. Not Mastered

Answer: A

Explanation:

RAID level		Characteristic
Raid0	Raid6	double parity striped across all disks
Raid1	Raid0	if one disk fails, all data is lost
Raid5	Raid5	requires a minimum of 3 disk drives
Raid6	Raid1	requires 50% of raw capacity for fault protection

NEW QUESTION 17

- (Exam Topic 1)

A customer needs a shared storage solution for a virtualization platform that will host a database application. The customer is considering an HPE Nimble array. Which feature would lead you to propose an HPE Nimble AF40 over an HPE 3PAR All Flash array?

- A. Fibre Channel Connectivity
- B. 10Gb iSCSI support
- C. Supported by Infosight for predictive analytics
- D. Predictable performance event with one failed controller

Answer: C

NEW QUESTION 19

- (Exam Topic 1)

A retail company recently implemented a Video surveillance solution. They now need an MSA storage solution with 100TB capacity. They want to be able to add more disk capacity if needed.

Which HPE tool can help you choose a storage solution, determine the total usable capacity, and create a BOM?

- A. HPE SPOCK
- B. HPE NinjaSTARS
- C. HPE Storage Sizing Tool
- D. HPE One Config Advanced

Answer: A

NEW QUESTION 20

- (Exam Topic 1)

A customer needs to verify inbound packet statistics for interface. Ten-GigabitEthernet 1/0/10 on an HPE FlexFabric 5900 series switch used by an iSCSI storage array.

Which command can be used in the CLI to perform this operation?

- A. show inbound counters port 1/0/10
- B. display counters inbound interface Ten-GigabitEthernet 1/0/10
- C. display all statistics from port 1/0/10
- D. interface Ten-GigabitEthernet 1/0/10 show counters

Answer: D

NEW QUESTION 24

- (Exam Topic 1)

A customer has the following requirements: two or more 10Gb SFP+ uplinks
downlink ports capable of 1Gb or 10Gb operation over CAT6a or CAT7 cables

24 downlink ports Which HPE tool would you use to help choose an HPE network solution that meets the customer requirements?

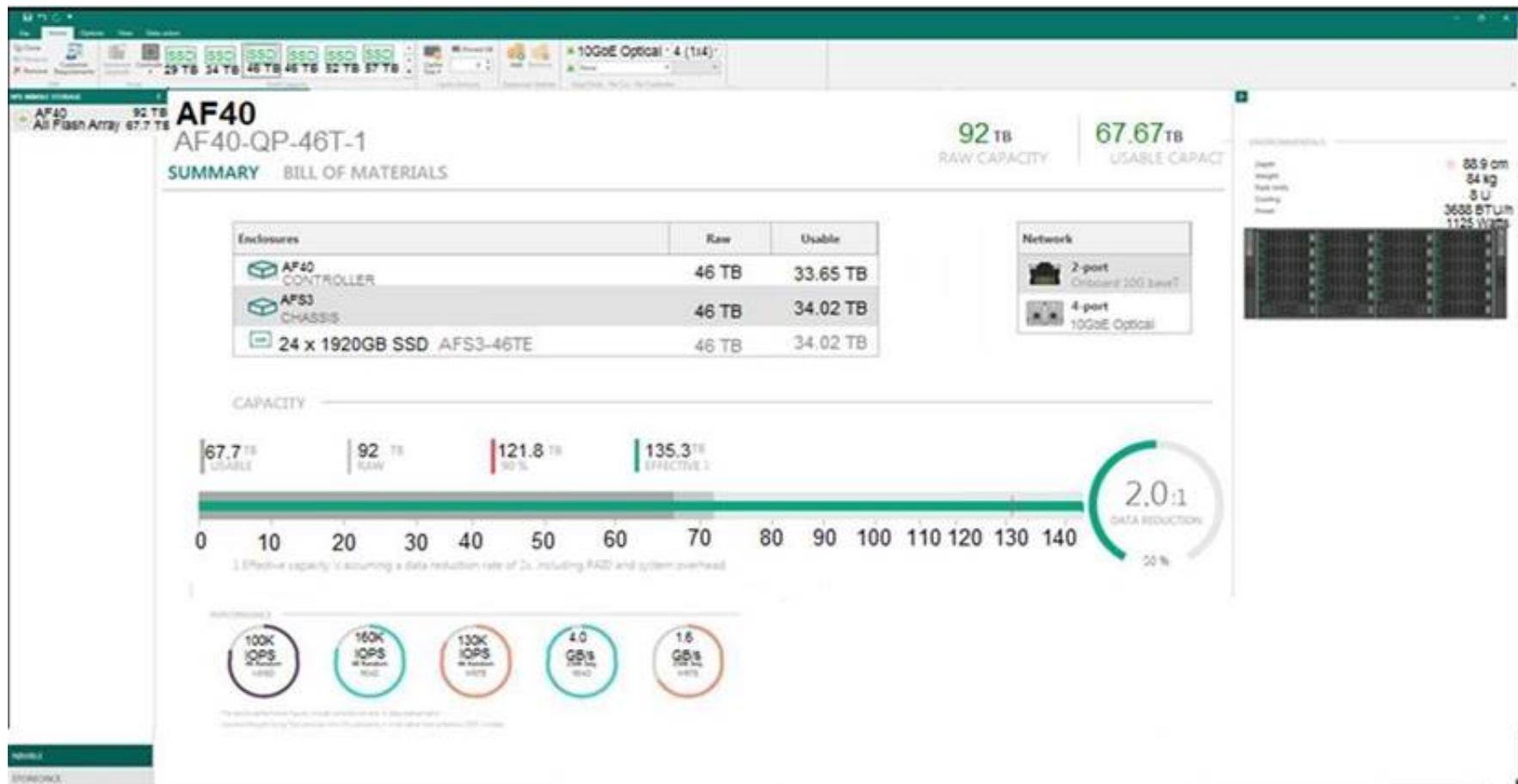
- A. HPE Switch Selector
- B. HPE NinjaSTARS
- C. HPE SAF
- D. HPE SPOCK

Answer: D

NEW QUESTION 29

- (Exam Topic 1)

Refer to the exhibit.



You are designing a new Nimble AF40 for your customer. The array will be added into an existing Nimble HF60 environment connected with SN6000B switches. You have created the configuration shown in the exhibit and noticed an error. What should you change in your configuration to ensure it meets the customer requirements?

- A. Change the controller to an AF20.
- B. Change the 10GbE Optical ports to Fibre Channel.
- C. Change the 10GbE Optical ports to 10BaseT.
- D. Change the controller to an HF20H.

Answer: D

NEW QUESTION 31

- (Exam Topic 1)

Refer to the exhibit.

```
<Switch-A>display int Ten-GigabitEthernet 1/0/1 Ten-GigabitEthernet1/0/1 Current state: UP
Line protocol state: UP IP packet frame type: Ethernet II, hardware address: d894-03fb-793d
Description: Ten-GigabitEthernet1/0/1 Interface Bandwidth: 10000000 kbps Loopback is not
set Media type is stack wire, port hardware type is STACK_SFP_PLUS 10Gbps-speed mode, full-
duplex mode Link speed type is autonegotiation, link duplex type is autonegotiation Flow-
control is not enabled Maximum frame length: 10000 Allow jumbo frames to pass Broadcast
max-ratio: 100% Multicast max-ratio: 100% Unicast max-ratio: 100% PVID: 1 MDI type:
Automdix Port link-type: Trunk VLAN Passing: 10, 20 VLAN permitted: 10, 20 Trunk port
encapsulation: IEEE 802.1q Port priority: 0 <SNIP>
```

An administrator connected a hypervisor to interface Ten-GigabitEthernet1/0/1 in a switch. The administrator created virtual machines in VLAN 10 and 20 on the hypervisor. VLAN 10 is configured to be tagged, and VLAN 20 is configured to be untagged on the hypervisor. The administrator found that all the virtual machines in VLAN 20 can communicate with each other, but not with any virtual machines on VLAN 20 external to the hypervisor. Given the output in the exhibit, what should you do to resolve the issue?

- A. Permit VLAN 1 on the interface.
- B. Configure the PVID of the interface to be VLAN 20.
- C. Configure the interface as an access port.
- D. Configure the interface as an IRF port.

Answer: D

NEW QUESTION 34

- (Exam Topic 1)

A customer needs a new VMware environment for a critical stock trading application and will need high performance compute and low latency storage. Identify the correct component configurations on the left and drag them to the answer area on the right. (Choose two.)

Select and Place:

Options	Answer Area
Two HPE DL380 Gen10 servers with two Intel Xeon-Bronze 3104 processors, 64GB of memory, two dual 10Gb NICs, dual 800W power supplies, and high temperature fan kit.	
Two HPE DL380 Gen10 servers with two Intel Xeon-Platinum 8270 processors, 256GB of memory, two dual 10Gb NICs, dual 800W power supplies, and high temperature fan kit.	⬅
HPE Nimble HF20H with 11TB storage, 960GB of cache, and dual port 10GbE NIC	➡
HPE Nimble AF20 with 11TB storage, and dual port 10GbE NIC	

- A. Mastered
- B. Not Mastered

Answer: A

Explanation:

Select and Place:

Options	Answer Area
Two HPE DL380 Gen10 servers with two Intel Xeon-Bronze 3104 processors, 64GB of memory, two dual 10Gb NICs, dual 800W power supplies, and high temperature fan kit.	Two HPE DL380 Gen10 servers with two Intel Xeon-Bronze 3104 processors, 64GB of memory, two dual 10Gb NICs, dual 800W power supplies, and high temperature fan kit.
Two HPE DL380 Gen10 servers with two Intel Xeon-Platinum 8270 processors, 256GB of memory, two dual 10Gb NICs, dual 800W power supplies, and high temperature fan kit.	⬅
HPE Nimble HF20H with 11TB storage, 960GB of cache, and dual port 10GbE NIC	➡
HPE Nimble AF20 with 11TB storage, and dual port 10GbE NIC	

NEW QUESTION 35

- (Exam Topic 1)
Refer to the exhibit.

```
admin> cfgshow

Defined configuration:
cfg:      zone_cfg_1
          nimble_esx_1_zone
zone:     nimble_esx_1_zone
          ESX1; NIMBLE1A
alias:    ESX1 51:40:2e:c0:11:0b:a4:c0
alias:    NIMBLE1A
          56:c9:ce:90:20:50:68:01

Effective configuration:
cfg:      zone_cfg_1
zone:     nimble_esx_1_zone
          51:40:2e:c0:11:0b:a4:c0
          56:c9:ce:90:20:50:68:01
```

When performing a code upgrade on an HPE Nimble array, you noticed a connection failure on ESX1. Refer to the exhibit showing the complete zoning configuration of one of the HPE SN3000B switches.
What should you do to ensure storage access is not interrupted when doing the next update?

- A. Create and ISL between the two HPE SN3000B switches.
- B. Create a new zone for ESX1 and the second storage controller.

- C. Change the timeout values on the SN3000B switch.
- D. Configure the same zone on a second HPE SN3000B.

Answer: C

NEW QUESTION 36

- (Exam Topic 1)

A customer is planning to deploy a branch office server rack. The environment will have the following requirements:

Single rack with 20 HPE ProLiant DL360 Gen10 Servers. Each Server will have 6 x 10G SFP+ Ports.

Each Server will have a dedicated iLO port.

The customer requires that only two switches be used. The customer requires separate control planes.

Which switch configuration can meet these requirements?

- A. 2 x HPE 5945 Series switch with IRF
- B. 2 x Aruba 8325 Series switches with VSX
- C. 2 x HPE 5945 Series switches standalone
- D. 2 x Aruba 8325 Series switches with backplane stacking

Answer: A

NEW QUESTION 38

- (Exam Topic 2)

You need to install 10 HPE ProLiant servers in an environment without DHCP. Which tool can you use to set up remote management?

- A. Intelligent Provisioning
- B. UEFI System Utilities
- C. Intelligent Management Center
- D. iLO 5 Configuration Utility

Answer: C

NEW QUESTION 43

- (Exam Topic 2)

A customer needs to create a large RAID set for archive storage on large-capacity drives. Which RAID level is recommended for this customer?

- A. RAID 0
- B. RAID 5+0
- C. RAID 1+0
- D. RAID 6

Answer: D

NEW QUESTION 46

- (Exam Topic 2)

A customer needs a video archive repository initially starting at 30TB internal storage. The repository is expected to grow at 20% annually and should have a lifespan of 3 years.

Which HPE ProLiant server solution meets the customer's requirements?

- A. HPE ProLiant DL560 Gen10 with LFF SAS drives
- B. HPE ProLiant DL380 Gen10 with LFF SAS drives
- C. HPE ProLiant ML110 with SFF SAS drives
- D. HPE ProLiant DL560 Gen9 with SFF SAS drives

Answer: B

NEW QUESTION 51

- (Exam Topic 2)

Exhibit:

-2vCPU
-8 GB RAM
-1 Gb dedicated network
-50 GB Disk

Which HPE ProLiant Server meets the customer's requirements?

☐ HPE ProLiant DL360 Gen10 with:
-1 dual 1 GB NIC
-2 CPU
-4 10 Gb port NIC
-2 CNA
-4 10 Gb FlexLOM

☐ HPE ProLiant DL380 Gen10 with:
-1 dual 1 GB NIC
-2 CPU
-4 10 Gb port NIC
-2 FC HBA
-4 10 Gb FlexLOM

☐ HPE ProLiant DL380 Gen10 with:
-2 CPU
-4 10 Gb port NIC
-1 dual port FC HBA
-4 10 Gb FlexLOM

☐ HPE ProLiant DL360 Gen10 with:
-1 CPU
-4 10 Gb ports NIC
-2 FC HBA
-4 10 Gb FlexLOM

- A. Option A
- B. Option B
- C. Option C
- D. Option D

Answer: B

NEW QUESTION 55

- (Exam Topic 2)

A customer needs to enable HPE Proactive Care and automated case creation for server hardware failures in their OneView environment. Which step do you need to complete in OneView to accomplish these tasks?

- A. Enable remote support from the Settings page.
- B. Apply the OneView Advanced monitoring license.
- C. Add the hosts to the managed devices group.
- D. Configure proactive scan reports.

Answer: A

NEW QUESTION 56

- (Exam Topic 2)

You are troubleshooting a customer's HPE ProLiant rack-mount server. The customer has configured the server in Legacy Boot BIOS Mode and is trying to boot from a USB 3.0 drive. The server will not boot from the drive. What should you do?

- A. Set the USB 3.0 mode to Enabled.
- B. Set the USB 3.0 mode to Auto.
- C. Use the internal USB 3.0 connector.
- D. Use the front-facing USB 3.0 connector.

Answer: A

NEW QUESTION 59

- (Exam Topic 2)

A customer is considering an HPE ProLiant DL380 Gen10 server for their data center. The customer runs a large Oracle database. They need to increase performance and reduce their licensing costs. Which feature of HPE Gen10 servers offers these benefits?

- A. workload profile matching
- B. agentless management
- C. jitter smoothing
- D. core boosting

Answer: D

NEW QUESTION 61

- (Exam Topic 2)

A customer requires a high level of network bandwidth and reliability. You are installing a pair of HPE switches that can provide redundancy with multiple connections between them for high availability and faster throughput.

Which technology should you configure on the switches to enable the capability the customer requires?

- A. Rapid Spanning Tree Protocol (RSTP)
- B. Virtual Extensible Local Area Network (VxLAN)
- C. Multichassis Link Aggregation (MLAG)
- D. Multiple Spanning Tree Protocol (MSTP)

Answer: C

NEW QUESTION 64

- (Exam Topic 2)

A company needs a solution that provides SMB and NFS file shares. The solution must have a built-in data backup to Microsoft Azure.

Which HPE solution meets the customer's needs?

- A. StoreOnce 3520
- B. StoreEasy 1000
- C. StoreOnce VSA
- D. StoreVirtual VSA

Answer: B

NEW QUESTION 65

- (Exam Topic 2)

A customer needs a solution that will maintain data availability in their campus location. They require a multi-node system that can sustain multiple failures, including a full building outage.

Which HPE storage platform meets the customer's needs?

- A. Nimble
- B. StoreVirtual
- C. StoreEasy
- D. MSA

Answer: D

NEW QUESTION 68

- (Exam Topic 2)

A customer needs to replace an existing storage array. The new array must be suitable for remote office deployment and support the following:

- Multi-protocol connectivity
- Flash-accelerated storage
- Low-cost midline SAS drives

Which HPE storage platform will meet these requirements?

- A. StoreVirtual VSA
- B. MSA
- C. SimpliVity
- D. StoreEasy

Answer: B

NEW QUESTION 70

- (Exam Topic 2)

A customer needs to support both network and storage traffic on their network, which includes Ethernet, iSCSi, and Fibre Channel devices. The customer is concerned about the large amount of cables coming from the various cards inserted in their rack servers, as well as the operational costs in their data center.

Which component addresses these issues?

- A. Converged network adapter
- B. Dual-port 10 GbE FlexLOM
- C. Dynamic Smart Array controller
- D. Fibre Channel host bus adapter

Answer: A

NEW QUESTION 74

- (Exam Topic 2)

You have completed a non-disruptive activation of firmware on an SN6000 switch. Which session must be restarted manually?

- A. Enterprise Fabric Management Suite session
- B. telnet session
- C. SAN connection Manager session
- D. QuickTools session

Answer: B

NEW QUESTION 75

- (Exam Topic 2)

When installing servers in a rack, a customer has left gaps between the servers.

What should you tell this customer regarding the space between servers? (Select two.)

- A. It should be filled with blanking panels.
- B. It does not provide correct rack airflow.
- C. It provides easy access for servicing components.
- D. It allows for easier cable management.
- E. It allows for side-to-side component cooling.

Answer: AB

NEW QUESTION 78

- (Exam Topic 2)

You are working in a data center with multiple servers and need to update the iLO 5 user names and passwords on a regular basis.

Which tool enables you to streamline and automate this process?

- A. Central Management Console
- B. iLO Amplifier Pack
- C. Agentless Management
- D. RESTful API

Answer: B

NEW QUESTION 81

- (Exam Topic 2)

A customer needs to centralize their backup environment for their branch office They plan to use HPE StoreOnce with catalyst

What should they implement within their backups software to minimize the network load on the remote site?

- A. source-side deduplication
- B. target-side deduplication
- C. thin provisioning
- D. native compression

Answer: A

NEW QUESTION 82

- (Exam Topic 2)

A customer is upgrading their network infrastructure to provide the best performance for IP storage. Which technologies in a network switch meet the customer's needs? (Choose three.)

- A. Jumbo Frames
- B. Deep Packet Buffers
- C. LLDP Support
- D. MLAG Support
- E. Fibre Channel Support
- F. Static Routing

Answer: ABD

NEW QUESTION 85

- (Exam Topic 2)

You are troubleshooting a POST error on a HPE ProLiant rack-mount server. HPE support has directed you to test a minimum hardware configuration.

Which components should you remove? (Choose two.)

- A. CMOS battery
- B. all cooling fans
- C. all expansion boards
- D. all external storage media
- E. redundant processors

Answer: DE

NEW QUESTION 90

- (Exam Topic 2)

You are designing a solution to run a Citrix XenDesktop workload.

Which HPE planning and designing resource contains a detailed example of this type of solution, including a list of all the hardware and software components?

- A. Sales Builder for Windows
- B. Product Bulletin
- C. Smart Selling Tool
- D. Reference Architecture

Answer: D

NEW QUESTION 95

- (Exam Topic 2)

A customer requires 12 Gb local storage for their VMware boot volumes, which require high-performance read cycles to enable the operating system to boot quickly.

Which drive type provides the most appropriate size and most cost-effective way to meet this requirement?

- A. Mixed-use SSD
- B. Flash media drive
- C. SATA nearline
- D. SAS midline

Answer: B

NEW QUESTION 100

- (Exam Topic 2)

A customer wants to safeguard their server firmware and asks you about the HPE ProLiant Gen10 features that provide this level of security.

Which Gen10 feature best addresses the customer's concern?

- A. The Secure Boot feature in Gen10 servers checks the signature of the firmware drivers and other files to ensure that the firmware is trusted by the operating system.
- B. Gen10 servers use silicon root of trust to validate and detect corrupted firmware, and authentication to block unauthorized updates.
- C. Gen10 servers support data encryption at rest, which uses cryptography on the database housing the data and on the physical storage where the databases are stored.
- D. The Trusted Platform Module (TPM) in Gen10 servers protects firmware by using public and private key encryption.

Answer: B

NEW QUESTION 104

- (Exam Topic 2)

A customer needs to virtualize their storage across physical servers and storage environments. Which HPE solution meets the customer's needs?

- A. Nimble CS3000
- B. StoreVirtual 4335
- C. StoreVirtual VSA
- D. MSA 2050

Answer: C

NEW QUESTION 108

- (Exam Topic 2)

You are designing a system for a customer that runs an OLTP application. The customer has SAN based storage. They need to accelerate application performance.

Which HPE ProLiant Gen10 feature set will address this customer's needs?

- A. intelligent system tuning
- B. intelligent provisioning
- C. CNSA suite
- D. scalable persistent memory

Answer: A

NEW QUESTION 111

- (Exam Topic 2)

A customer requires a recovery strategy that provides multiple rollback points during the day for their Microsoft SQL database. The customer needs to be able to recover data instantly.

Which method meets this requirement?

- A. offsite log shipping
- B. tape copy
- C. storage replication
- D. snapshot

Answer: D

NEW QUESTION 113

- (Exam Topic 2)

A customer plans to back up a file server that holds 2 TB of data. The customer wants to upgrade their network infrastructure to support backup and to implement a datacenter network solution.

Which solutions would HPE recommend to meet the customer needs? (Choose two.)

- A. FlexFabric 5900
- B. StoreEasy 1450
- C. StoreVirtual VSA
- D. Aruba 2900
- E. StoreOnce 3100

Answer: AE

NEW QUESTION 116

- (Exam Topic 2)

While troubleshooting a HPE ProLiant Gen10 rack-mount server, you determine that the current and backup system ROMs are corrupt. What should be the next step to fix the server?

- A. Restore the system firmware from a USB drive
- B. Restore the system firmware from a UEFI shell prompt
- C. Replace the CMOS battery
- D. Restore the system firmware from the iLO repository
- E. Replace the system board

Answer: E

NEW QUESTION 117

- (Exam Topic 2)

A customer needs Layer 2 switches that provide basic functionality. In the future, this customer might need to use the switches' CLI to configure VLAN and STP features.

Which category of the switches does meet the customer's needs?

- A. unmanaged
- B. managed
- C. VLAN-based
- D. software distributed switch

Answer: B

NEW QUESTION 118

- (Exam Topic 2)

You are installing new drives into the internal cage of a HPE ProLiant DL380 server. How is the drive device number set?

- A. The Smart Array controller assigns the device number automatically based on the bay
- B. HPE OneView uses the server profile to assign the device number
- C. The operating system assigns the device number automatically based on the drive installation order
- D. You must use Smart Storage Administrator to assign the device number

Answer: A

NEW QUESTION 119

- (Exam Topic 2)

You are installing an HPE StoreOnce backup system in a customer's environment. They need a simple and cost-effective method to centralize and automate the backup of multiple servers (file, virtualization, database). They also need the ability to integrate with an existing third-party backup software.

How must you configure the StoreOnce system to meet the customer's requirements?

- A. block device
- B. replication target
- C. NDMP target
- D. VTL device

Answer: D

NEW QUESTION 122

- (Exam Topic 2)

You are onsite at a customer location to install a new network switch. The customer wants users to be able to manage the switch through the IP network.

How should you connect the switch to the network?

- A. Configure multiple user IDs or roles for the console connection
- B. Configure the management IP address on the switch and enable Telnet or SSH access
- C. Use a dedicated console cable to create a dedicated management network for every user
- D. Connect the switch to the network by using the serial cable that ships with the switch

Answer: B

NEW QUESTION 123

- (Exam Topic 2)

A customer plans to use HPE ProLiant servers for line-of-business applications. They want to configure the servers to increase reliability.

Which workload profile should the customer use?

- A. Virtualization – Max Performance
- B. Transactional Application Processing
- C. I/O Throughput
- D. Mission Critical

Answer: D

NEW QUESTION 127

- (Exam Topic 2)

When should you use the HPE Switch Selector?

- A. when you need to list the price information of the switches

- B. when you need to select a switch VLAN configuration
- C. when you need to compare features between multiple switches
- D. when you need to perform a competitive analysis between vendors

Answer: C

NEW QUESTION 129

.....

About ExamBible

[Your Partner of IT Exam](#)

Found in 1998

ExamBible is a company specialized on providing high quality IT exam practice study materials, especially Cisco CCNA, CCDA, CCNP, CCIE, Checkpoint CCSE, CompTIA A+, Network+ certification practice exams and so on. We guarantee that the candidates will not only pass any IT exam at the first attempt but also get profound understanding about the certificates they have got. There are so many alike companies in this industry, however, ExamBible has its unique advantages that other companies could not achieve.

Our Advances

* 99.9% Uptime

All examinations will be up to date.

* 24/7 Quality Support

We will provide service round the clock.

* 100% Pass Rate

Our guarantee that you will pass the exam.

* Unique Gurantee

If you do not pass the exam at the first time, we will not only arrange FULL REFUND for you, but also provide you another exam of your claim, ABSOLUTELY FREE!

NEW QUESTION 1

- (Exam Topic 1)

Match the speed and protocol with the appropriate component.

Component

SFP+

QSFP28

Mini-SAS HD 4x

Speed and Protocol

10GbE

12Gb SAS

100GbE

- A. Mastered
- B. Not Mastered

Answer: A

Explanation:

Component

SFP+

QSFP28

Mini-SAS HD 4x

Speed and Protocol

10GbE

12Gb SAS

100GbE

NEW QUESTION 2

- (Exam Topic 1)

Refer to the exhibit.

```
172.16.5.1 - PuTTY
K11-S14-A: admin> portshow 0/0/1
portIndex:      1
portName: port1
portHealth:      Fabric vision license not present. Please install the license and retry the operation.

Authentication: None
portDisableReason: None
portCFlags: 0x1
portFlags: 0x20b03 PRESENT ACTIVE F_PORT G_PORT U_PORT LOGICAL_ONLINE LOGIN NOELP ACCEPT FLOGI
LocalSwcFlags: 0x0
portType: 18.0
PDP Port: Port is licensed
portState: 1 Online
Protocol: FC
portPhys: 6 In_Sync portScn: 32 F_Port
port generation number: 0
state transition count: 1

portId: 010100
portIfId: 43020015
portWwn: 20:01:c4:f5:7c:b3:25:e1
portWwn of device(s) connected:
    56:c9:ce:90:20:50:68:01
Distance: normal
portSpeed: N8Gbps

Credit Recovery: Inactive
Aoq: Inactive
FAA: Inactive
F_Trunk: Inactive
LE domain: 0
Peer beacon: Off
```

The information shown is displayed for a Nimble array you are installing. The customer's administrator has asked you for the speed at which the Nimble ports are connecting to their SAN switches, and you have run the command shown to determine the number of gigabits per second used by this port connection. What speed does the exhibit indicate is in use?

- A. 18
- B. 32
- C. 6
- D. 8

Answer: C

NEW QUESTION 3

- (Exam Topic 1)

A customer has a new virtual environment. They selected HPE servers for the environment in order to achieve better performance for their applications. Which HPE feature enables the customer to achieve this server performance improvement?

- A. embedded application
- B. workload performance advisor
- C. workload profile
- D. Active Health System

Answer: B

NEW QUESTION 4

- (Exam Topic 1)

A customer needs a single, dual-processor server for an Enterprise Resource Planning solution for a single office. The customer application uses a mix of HDDs and SSDs and up to 3TB of RAM.

Which HPE Solution should you propose?

- A. HPE Synergy Solution
- B. HPE Apollo 2000 Server
- C. HPE ML350 Gen10
- D. HPE ML110 Gen10

Answer: B

NEW QUESTION 5

- (Exam Topic 1)

You are creating a configuration for a new Nimble HF40 array.

Which tool should you use to ensure that you include adequate cache in the configuration?

- A. HPE NinjaSTARS
- B. HPE Storage Sizer
- C. HPE OneView
- D. HPE SPOCK

Answer: A

NEW QUESTION 6

- (Exam Topic 1)

A Network administrator connects two switches together with multiple links of the same speed, duplex, and media type. The administrator expected the links to be aggregated, but they are not. The administrator confirmed that the ports are part of the appropriate link aggregation groups and that the permitted VLANs match. Switch A has the lower LACP System Priority. Which LACP operation states describe the failure above?

- A. Switch A: Active; Switch B: Active
- B. Switch A: Active; Switch B: Passive
- C. Switch A: Passive; Switch B: Passive
- D. Switch A: Passive; Switch B: Active

Answer: C

NEW QUESTION 7

- (Exam Topic 1)

Indicate whether each management feature manages or monitors a single system or multiple systems.

Answer Area

		HPE 3PAR SSMC
ManagingMonitoring a Single System		HPE OneView Global Dashboard
Managing/Monitoring Multiple Systems		HPE Intelligent Provisioning
		HPE Smart Storage Administrator

- A. Mastered
- B. Not Mastered

Answer: A

Explanation:

Answer Area

	ManagingMonitoring a Single System	HPE 3PAR SSMC
ManagingMonitoring a Single System	Managing/Monitoring Multiple Systems	HPE OneView Global Dashboard
Managing/Monitoring Multiple Systems	ManagingMonitoring a Single System	HPE Intelligent Provisioning
	Managing/Monitoring Multiple Systems	HPE Smart Storage Administrator

NEW QUESTION 8

- (Exam Topic 1)

Which hardware and software components make up a Nimble dHCI infrastructure?

- A. HPE M-Series switch, HPE ProLiant DL servers, HPE Nimble, and VMware
- B. Aruba Switches, HPE Synergy, HPE Nimble, and VMware
- C. HPE M-Series switch, HPE ProLiant DL servers, HPE Nimble, and Hyper-V
- D. Aruba Switches, HPE Synergy, HPE Nimble, and Hyper-V

Answer: A

NEW QUESTION 9

- (Exam Topic 1)

Match each characteristic to the correct storage type.

Answer Area

DAS		Allows access to volumes over FCP and iSCSI protocols
NAS		Ability to share file-based storage across an Ethernet network
Storage Array		Allows shared block level access over a network
		JBOD storage connected to one server using SAS

- A. Mastered
B. Not Mastered

Answer: A

Explanation:

Answer Area

DAS	Storage Array	Allows access to volumes over FCP and iSCSI protocols
NAS	NAS	Ability to share file-based storage across an Ethernet network
Storage Array	Storage Array	Allows shared block level access over a network
	DAS	JBOD storage connected to one server using SAS

NEW QUESTION 10

- (Exam Topic 1)

Which protocol can be used to access a shared directory on a network-attached storage device?

- A. SNMP
B. SMB
C. FCP

Answer: B

NEW QUESTION 10

- (Exam Topic 1)

A customer is planning to deploy a new Top of Rack solution. They plan to use a stacking technology that meets the following requirements:
Support for Multi Chassis Link Aggregation in an active-active mode. The control plane must not be a single point of failure.
Rapid Fail-over. Unified Management.
They require a maximum of two switches per stack.
Which stacking technology meets the customer's requirements?

- A. HPE Intelligent Resilient Framework (IRF)
B. HPE Distributed Trunking
C. Aruba Virtual Switching Extension (VSX)
D. Aruba Virtual Switching Framework (VSF)

Answer: C

NEW QUESTION 13

- (Exam Topic 1)

Match each HPE solution to its optimal use case.

Select and Place:
Answer Area

HPE Solution		Use Case
HPE Proliant Microserver	<input type="text"/>	General Purpose Computing, Virtualization Clusters, Enterprise Applications
HPE Proliant ML/DL	<input type="text"/>	NAS Storage, File Sync and Share for Remote/Mobile users
HPE StoreEasy	<input type="text"/>	Remote Office, Low Cost, Quiet Operation, Office environment
HPE StoreOnce	<input type="text"/>	Space-efficient Backups, Backup Replication, Cloud-based Archiving

- A. Mastered
- B. Not Mastered

Answer: A

Explanation:

Select and Place:
Answer Area

HPE Solution		Use Case
<div>HPE Proliant Microserver</div>	<div>HPE Proliant ML/DL</div>	General Purpose Computing, Virtualization Clusters, Enterprise Applications
<div>HPE Proliant ML/DL</div>	<div>HPE StoreEasy</div>	NAS Storage, File Sync and Share for Remote/Mobile users
<div>HPE StoreEasy</div>	<div>HPE Proliant Microserver</div>	Remote Office, Low Cost, Quiet Operation, Office environment
<div>HPE StoreOnce</div>	<div>HPE StoreOnce</div>	Space-efficient Backups, Backup Replication, Cloud-based Archiving

NEW QUESTION 15

- (Exam Topic 1)

Match each characteristic to the appropriate RAID level.

Answer Area

RAID level		Characteristic
Raid0	<input type="text"/>	double parity striped across all disks
Raid1	<input type="text"/>	if one disk fails, all data is lost
Raid5	<input type="text"/>	requires a minimum of 3 disk drives
Raid6	<input type="text"/>	requires 50% of raw capacity for fault protection

- A. Mastered
- B. Not Mastered

Answer: A

Explanation:

RAID level		Characteristic
Raid0	Raid6	double parity striped across all disks
Raid1	Raid0	if one disk fails, all data is lost
Raid5	Raid5	requires a minimum of 3 disk drives
Raid6	Raid1	requires 50% of raw capacity for fault protection

NEW QUESTION 17

- (Exam Topic 1)

A customer needs a shared storage solution for a virtualization platform that will host a database application. The customer is considering an HPE Nimble array. Which feature would lead you to propose an HPE Nimble AF40 over an HPE 3PAR All Flash array?

- A. Fibre Channel Connectivity
- B. 10Gb iSCSI support
- C. Supported by Infosight for predictive analytics
- D. Predictable performance event with one failed controller

Answer: C

NEW QUESTION 19

- (Exam Topic 1)

A retail company recently implemented a Video surveillance solution. They now need an MSA storage solution with 100TB capacity. They want to be able to add more disk capacity if needed.

Which HPE tool can help you choose a storage solution, determine the total usable capacity, and create a BOM?

- A. HPE SPOCK
- B. HPE NinjaSTARS
- C. HPE Storage Sizing Tool
- D. HPE One Config Advanced

Answer: A

NEW QUESTION 20

- (Exam Topic 1)

A customer needs to verify inbound packet statistics for interface. Ten-GigabitEthernet 1/0/10 on an HPE FlexFabric 5900 series switch used by an iSCSI storage array.

Which command can be used in the CLI to perform this operation?

- A. show inbound counters port 1/0/10
- B. display counters inbound interface Ten-GigabitEthernet 1/0/10
- C. display all statistics from port 1/0/10
- D. interface Ten-GigabitEthernet 1/0/10 show counters

Answer: D

NEW QUESTION 24

- (Exam Topic 1)

A customer has the following requirements: two or more 10Gb SFP+ uplinks
downlink ports capable of 1Gb or 10Gb operation over CAT6a or CAT7 cables

24 downlink ports Which HPE tool would you use to help choose an HPE network solution that meets the customer requirements?

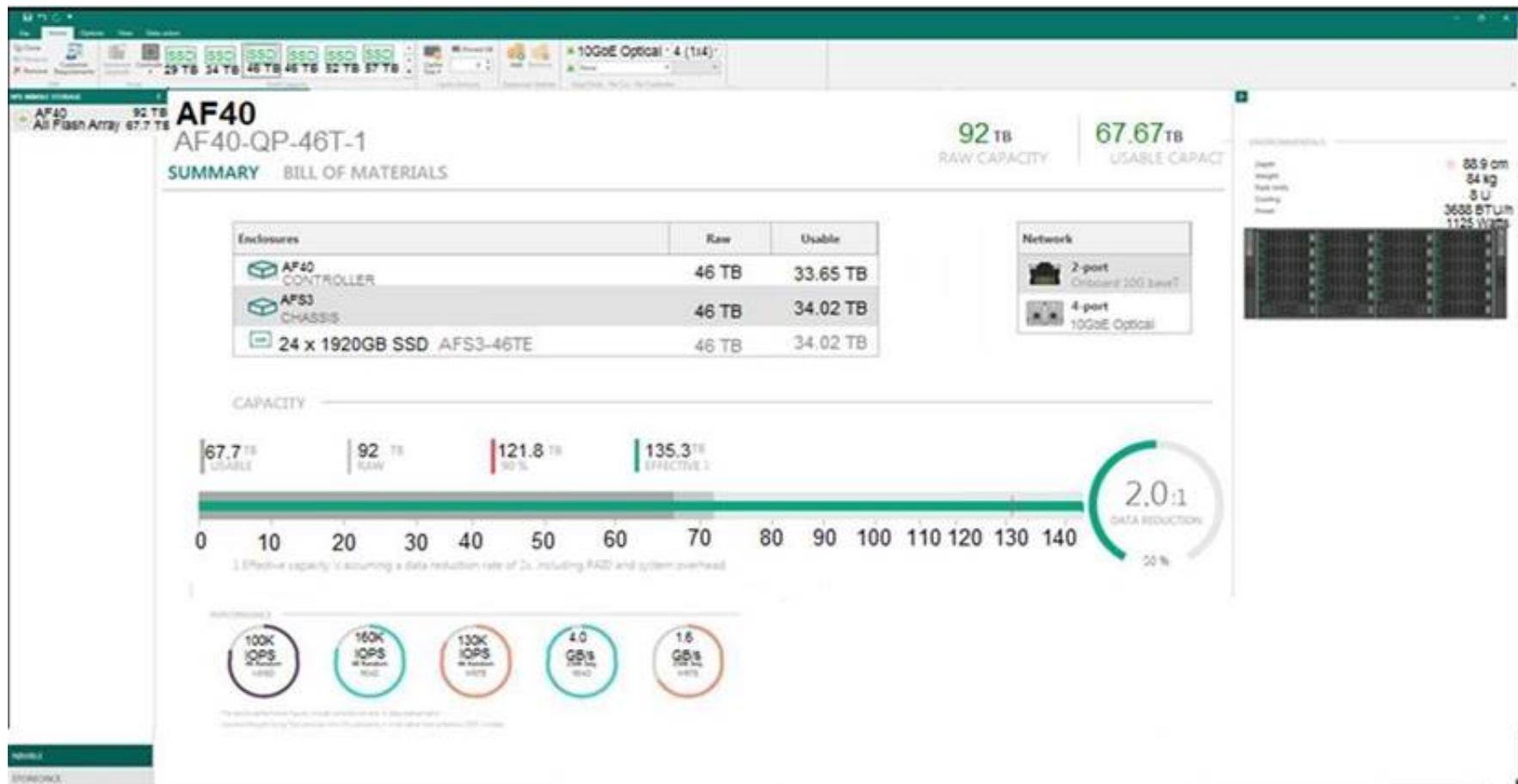
- A. HPE Switch Selector
- B. HPE NinjaSTARS
- C. HPE SAF
- D. HPE SPOCK

Answer: D

NEW QUESTION 29

- (Exam Topic 1)

Refer to the exhibit.



You are designing a new Nimble AF40 for your customer. The array will be added into an existing Nimble HF60 environment connected with SN6000B switches. You have created the configuration shown in the exhibit and noticed an error. What should you change in your configuration to ensure it meets the customer requirements?

- A. Change the controller to an AF20.
- B. Change the 10GbE Optical ports to Fibre Channel.
- C. Change the 10GbE Optical ports to 10BaseT.
- D. Change the controller to an HF20H.

Answer: D

NEW QUESTION 31

- (Exam Topic 1)

Refer to the exhibit.

```
<Switch-A>display int Ten-GigabitEthernet 1/0/1 Ten-GigabitEthernet1/0/1 Current state: UP
Line protocol state: UP IP packet frame type: Ethernet II, hardware address: d894-03fb-793d
Description: Ten-GigabitEthernet1/0/1 Interface Bandwidth: 10000000 kbps Loopback is not
set Media type is stack wire, port hardware type is STACK_SFP_PLUS 10Gbps-speed mode, full-
duplex mode Link speed type is autonegotiation, link duplex type is autonegotiation Flow-
control is not enabled Maximum frame length: 10000 Allow jumbo frames to pass Broadcast
max-ratio: 100% Multicast max-ratio: 100% Unicast max-ratio: 100% PVID: 1 MDI type:
Automdix Port link-type: Trunk VLAN Passing: 10, 20 VLAN permitted: 10, 20 Trunk port
encapsulation: IEEE 802.1q Port priority: 0 <SNIP>
```

An administrator connected a hypervisor to interface Ten-GigabitEthernet1/0/1 in a switch. The administrator created virtual machines in VLAN 10 and 20 on the hypervisor. VLAN 10 is configured to be tagged, and VLAN 20 is configured to be untagged on the hypervisor. The administrator found that all the virtual machines in VLAN 20 can communicate with each other, but not with any virtual machines on VLAN 20 external to the hypervisor. Given the output in the exhibit, what should you do to resolve the issue?

- A. Permit VLAN 1 on the interface.
- B. Configure the PVID of the interface to be VLAN 20.
- C. Configure the interface as an access port.
- D. Configure the interface as an IRF port.

Answer: D

NEW QUESTION 34

- (Exam Topic 1)

A customer needs a new VMware environment for a critical stock trading application and will need high performance compute and low latency storage. Identify the correct component configurations on the left and drag them to the answer area on the right. (Choose two.)

Select and Place:

Options	Answer Area
Two HPE DL380 Gen10 servers with two Intel Xeon-Bronze 3104 processors, 64GB of memory, two dual 10Gb NICs, dual 800W power supplies, and high temperature fan kit.	
Two HPE DL380 Gen10 servers with two Intel Xeon-Platinum 8270 processors, 256GB of memory, two dual 10Gb NICs, dual 800W power supplies, and high temperature fan kit.	⬅
HPE Nimble HF20H with 11TB storage, 960GB of cache, and dual port 10GbE NIC	➡
HPE Nimble AF20 with 11TB storage, and dual port 10GbE NIC	

- A. Mastered
- B. Not Mastered

Answer: A

Explanation:

Select and Place:

Options	Answer Area
Two HPE DL380 Gen10 servers with two Intel Xeon-Bronze 3104 processors, 64GB of memory, two dual 10Gb NICs, dual 800W power supplies, and high temperature fan kit.	Two HPE DL380 Gen10 servers with two Intel Xeon-Bronze 3104 processors, 64GB of memory, two dual 10Gb NICs, dual 800W power supplies, and high temperature fan kit.
Two HPE DL380 Gen10 servers with two Intel Xeon-Platinum 8270 processors, 256GB of memory, two dual 10Gb NICs, dual 800W power supplies, and high temperature fan kit.	⬅
HPE Nimble HF20H with 11TB storage, 960GB of cache, and dual port 10GbE NIC	➡
HPE Nimble AF20 with 11TB storage, and dual port 10GbE NIC	

NEW QUESTION 35

- (Exam Topic 1)
Refer to the exhibit.

```
admin> cfgshow

Defined configuration:
cfg:      zone_cfg_1
          nimble_esx_1_zone
zone:     nimble_esx_1_zone
          ESX1; NIMBLE1A
alias:    ESX1 51:40:2e:c0:11:0b:a4:c0
alias:    NIMBLE1A
          56:c9:ce:90:20:50:68:01

Effective configuration:
cfg:      zone_cfg_1
zone:     nimble_esx_1_zone
          51:40:2e:c0:11:0b:a4:c0
          56:c9:ce:90:20:50:68:01
```

When performing a code upgrade on an HPE Nimble array, you noticed a connection failure on ESX1. Refer to the exhibit showing the complete zoning configuration of one of the HPE SN3000B switches.
What should you do to ensure storage access is not interrupted when doing the next update?

- A. Create and ISL between the two HPE SN3000B switches.
- B. Create a new zone for ESX1 and the second storage controller.

- C. Change the timeout values on the SN3000B switch.
- D. Configure the same zone on a second HPE SN3000B.

Answer: C

NEW QUESTION 36

- (Exam Topic 1)

A customer is planning to deploy a branch office server rack. The environment will have the following requirements:

Single rack with 20 HPE ProLiant DL360 Gen10 Servers. Each Server will have 6 x 10G SFP+ Ports.

Each Server will have a dedicated iLO port.

The customer requires that only two switches be used. The customer requires separate control planes.

Which switch configuration can meet these requirements?

- A. 2 x HPE 5945 Series switch with IRF
- B. 2 x Aruba 8325 Series switches with VSX
- C. 2 x HPE 5945 Series switches standalone
- D. 2 x Aruba 8325 Series switches with backplane stacking

Answer: A

NEW QUESTION 38

- (Exam Topic 2)

You need to install 10 HPE ProLiant servers in an environment without DHCP. Which tool can you use to set up remote management?

- A. Intelligent Provisioning
- B. UEFI System Utilities
- C. Intelligent Management Center
- D. iLO 5 Configuration Utility

Answer: C

NEW QUESTION 43

- (Exam Topic 2)

A customer needs to create a large RAID set for archive storage on large-capacity drives. Which RAID level is recommended for this customer?

- A. RAID 0
- B. RAID 5+0
- C. RAID 1+0
- D. RAID 6

Answer: D

NEW QUESTION 46

- (Exam Topic 2)

A customer needs a video archive repository initially starting at 30TB internal storage. The repository is expected to grow at 20% annually and should have a lifespan of 3 years.

Which HPE ProLiant server solution meets the customer's requirements?

- A. HPE ProLiant DL560 Gen10 with LFF SAS drives
- B. HPE ProLiant DL380 Gen10 with LFF SAS drives
- C. HPE ProLiant ML110 with SFF SAS drives
- D. HPE ProLiant DL560 Gen9 with SFF SAS drives

Answer: B

NEW QUESTION 51

- (Exam Topic 2)

Exhibit:

-2vCPU
-8 GB RAM
-1 Gb dedicated network
-50 GB Disk

Which HPE ProLiant Server meets the customer's requirements?

- ☐ HPE ProLiant DL360 Gen10 with:
 - 1 dual 1 GB NIC
 - 2 CPU
 - 4 10 Gb port NIC
 - 2 CNA
 - 4 10 Gb FlexLOM
- ☐ HPE ProLiant DL380 Gen10 with:
 - 1 dual 1 GB NIC
 - 2 CPU
 - 4 10 Gb port NIC
 - 2 FC HBA
 - 4 10 Gb FlexLOM
- ☐ HPE ProLiant DL380 Gen10 with:
 - 2 CPU
 - 4 10 Gb port NIC
 - 1 dual port FC HBA
 - 4 10 Gb FlexLOM
- ☐ HPE ProLiant DL360 Gen10 with:
 - 1 CPU
 - 4 10 Gb ports NIC
 - 2 FC HBA
 - 4 10 Gb FlexLOM

- A. Option A
- B. Option B
- C. Option C
- D. Option D

Answer: B

NEW QUESTION 55

- (Exam Topic 2)

A customer needs to enable HPE Proactive Care and automated case creation for server hardware failures in their OneView environment. Which step do you need to complete in OneView to accomplish these tasks?

- A. Enable remote support from the Settings page.
- B. Apply the OneView Advanced monitoring license.
- C. Add the hosts to the managed devices group.
- D. Configure proactive scan reports.

Answer: A

NEW QUESTION 56

- (Exam Topic 2)

You are troubleshooting a customer's HPE ProLiant rack-mount server. The customer has configured the server in Legacy Boot BIOS Mode and is trying to boot from a USB 3.0 drive. The server will not boot from the drive. What should you do?

- A. Set the USB 3.0 mode to Enabled.
- B. Set the USB 3.0 mode to Auto.
- C. Use the internal USB 3.0 connector.
- D. Use the front-facing USB 3.0 connector.

Answer: A

NEW QUESTION 59

- (Exam Topic 2)

A customer is considering an HPE ProLiant DL380 Gen10 server for their data center. The customer runs a large Oracle database. They need to increase performance and reduce their licensing costs. Which feature of HPE Gen10 servers offers these benefits?

- A. workload profile matching
- B. agentless management
- C. jitter smoothing
- D. core boosting

Answer: D

NEW QUESTION 61

- (Exam Topic 2)

A customer requires a high level of network bandwidth and reliability. You are installing a pair of HPE switches that can provide redundancy with multiple connections between them for high availability and faster throughput.

Which technology should you configure on the switches to enable the capability the customer requires?

- A. Rapid Spanning Tree Protocol (RSTP)
- B. Virtual Extensible Local Area Network (VxLAN)
- C. Multichassis Link Aggregation (MLAG)
- D. Multiple Spanning Tree Protocol (MSTP)

Answer: C

NEW QUESTION 64

- (Exam Topic 2)

A company needs a solution that provides SMB and NFS file shares. The solution must have a built-in data backup to Microsoft Azure.

Which HPE solution meets the customer's needs?

- A. StoreOnce 3520
- B. StoreEasy 1000
- C. StoreOnce VSA
- D. StoreVirtual VSA

Answer: B

NEW QUESTION 65

- (Exam Topic 2)

A customer needs a solution that will maintain data availability in their campus location. They require a multi-node system that can sustain multiple failures, including a full building outage.

Which HPE storage platform meets the customer's needs?

- A. Nimble
- B. StoreVirtual
- C. StoreEasy
- D. MSA

Answer: D

NEW QUESTION 68

- (Exam Topic 2)

A customer needs to replace an existing storage array. The new array must be suitable for remote office deployment and support the following:

- Multi-protocol connectivity
- Flash-accelerated storage
- Low-cost midline SAS drives

Which HPE storage platform will meet these requirements?

- A. StoreVirtual VSA
- B. MSA
- C. SimpliVity
- D. StoreEasy

Answer: B

NEW QUESTION 70

- (Exam Topic 2)

A customer needs to support both network and storage traffic on their network, which includes Ethernet, iSCSi, and Fibre Channel devices. The customer is concerned about the large amount of cables coming from the various cards inserted in their rack servers, as well as the operational costs in their data center.

Which component addresses these issues?

- A. Converged network adapter
- B. Dual-port 10 GbE FlexLOM
- C. Dynamic Smart Array controller
- D. Fibre Channel host bus adapter

Answer: A

NEW QUESTION 74

- (Exam Topic 2)

You have completed a non-disruptive activation of firmware on an SN6000 switch. Which session must be restarted manually?

- A. Enterprise Fabric Management Suite session
- B. telnet session
- C. SAN connection Manager session
- D. QuickTools session

Answer: B

NEW QUESTION 75

- (Exam Topic 2)

When installing servers in a rack, a customer has left gaps between the servers.

What should you tell this customer regarding the space between servers? (Select two.)

- A. It should be filled with blanking panels.
- B. It does not provide correct rack airflow.
- C. It provides easy access for servicing components.
- D. It allows for easier cable management.
- E. It allows for side-to-side component cooling.

Answer: AB

NEW QUESTION 78

- (Exam Topic 2)

You are working in a data center with multiple servers and need to update the iLO 5 user names and passwords on a regular basis.

Which tool enables you to streamline and automate this process?

- A. Central Management Console
- B. iLO Amplifier Pack
- C. Agentless Management
- D. RESTful API

Answer: B

NEW QUESTION 81

- (Exam Topic 2)

A customer needs to centralize their backup environment for their branch office They plan to use HPE StoreOnce with catalyst

What should they implement within their backups software to minimize the network load on the remote site?

- A. source-side deduplication
- B. target-side deduplication
- C. thin provisioning
- D. native compression

Answer: A

NEW QUESTION 82

- (Exam Topic 2)

A customer is upgrading their network infrastructure to provide the best performance for IP storage. Which technologies in a network switch meet the customer's needs? (Choose three.)

- A. Jumbo Frames
- B. Deep Packet Buffers
- C. LLDP Support
- D. MLAG Support
- E. Fibre Channel Support
- F. Static Routing

Answer: ABD

NEW QUESTION 85

- (Exam Topic 2)

You are troubleshooting a POST error on a HPE ProLiant rack-mount server. HPE support has directed you to test a minimum hardware configuration.

Which components should you remove? (Choose two.)

- A. CMOS battery
- B. all cooling fans
- C. all expansion boards
- D. all external storage media
- E. redundant processors

Answer: DE

NEW QUESTION 90

- (Exam Topic 2)

You are designing a solution to run a Citrix XenDesktop workload.

Which HPE planning and designing resource contains a detailed example of this type of solution, including a list of all the hardware and software components?

- A. Sales Builder for Windows
- B. Product Bulletin
- C. Smart Selling Tool
- D. Reference Architecture

Answer: D

NEW QUESTION 95

- (Exam Topic 2)

A customer requires 12 Gb local storage for their VMware boot volumes, which require high-performance read cycles to enable the operating system to boot quickly.

Which drive type provides the most appropriate size and most cost-effective way to meet this requirement?

- A. Mixed-use SSD
- B. Flash media drive
- C. SATA nearline
- D. SAS midline

Answer: B

NEW QUESTION 100

- (Exam Topic 2)

A customer wants to safeguard their server firmware and asks you about the HPE ProLiant Gen10 features that provide this level of security.

Which Gen10 feature best addresses the customer's concern?

- A. The Secure Boot feature in Gen10 servers checks the signature of the firmware drivers and other files to ensure that the firmware is trusted by the operating system.
- B. Gen10 servers use silicon root of trust to validate and detect corrupted firmware, and authentication to block unauthorized updates.
- C. Gen10 servers support data encryption at rest, which uses cryptography on the database housing the data and on the physical storage where the databases are stored.
- D. The Trusted Platform Module (TPM) in Gen10 servers protects firmware by using public and private key encryption.

Answer: B

NEW QUESTION 104

- (Exam Topic 2)

A customer needs to virtualize their storage across physical servers and storage environments. Which HPE solution meets the customer's needs?

- A. Nimble CS3000
- B. StoreVirtual 4335
- C. StoreVirtual VSA
- D. MSA 2050

Answer: C

NEW QUESTION 108

- (Exam Topic 2)

You are designing a system for a customer that runs an OLTP application. The customer has SAN based storage. They need to accelerate application performance.

Which HPE ProLiant Gen10 feature set will address this customer's needs?

- A. intelligent system tuning
- B. intelligent provisioning
- C. CNSA suite
- D. scalable persistent memory

Answer: A

NEW QUESTION 111

- (Exam Topic 2)

A customer requires a recovery strategy that provides multiple rollback points during the day for their Microsoft SQL database. The customer needs to be able to recover data instantly.

Which method meets this requirement?

- A. offsite log shipping
- B. tape copy
- C. storage replication
- D. snapshot

Answer: D

NEW QUESTION 113

- (Exam Topic 2)

A customer plans to back up a file server that holds 2 TB of data. The customer wants to upgrade their network infrastructure to support backup and to implement a datacenter network solution.

Which solutions would HPE recommend to meet the customer needs? (Choose two.)

- A. FlexFabric 5900
- B. StoreEasy 1450
- C. StoreVirtual VSA
- D. Aruba 2900
- E. StoreOnce 3100

Answer: AE

NEW QUESTION 116

- (Exam Topic 2)

While troubleshooting a HPE ProLiant Gen10 rack-mount server, you determine that the current and backup system ROMs are corrupt. What should be the next step to fix the server?

- A. Restore the system firmware from a USB drive
- B. Restore the system firmware from a UEFI shell prompt
- C. Replace the CMOS battery
- D. Restore the system firmware from the iLO repository
- E. Replace the system board

Answer: E

NEW QUESTION 117

- (Exam Topic 2)

A customer needs Layer 2 switches that provide basic functionality. In the future, this customer might need to use the switches' CLI to configure VLAN and STP features.

Which category of the switches does meet the customer's needs?

- A. unmanaged
- B. managed
- C. VLAN-based
- D. software distributed switch

Answer: B

NEW QUESTION 118

- (Exam Topic 2)

You are installing new drives into the internal cage of a HPE ProLiant DL380 server. How is the drive device number set?

- A. The Smart Array controller assigns the device number automatically based on the bay
- B. HPE OneView uses the server profile to assign the device number
- C. The operating system assigns the device number automatically based on the drive installation order
- D. You must use Smart Storage Administrator to assign the device number

Answer: A

NEW QUESTION 119

- (Exam Topic 2)

You are installing an HPE StoreOnce backup system in a customer's environment. They need a simple and cost-effective method to centralize and automate the backup of multiple servers (file, virtualization, database). They also need the ability to integrate with an existing third-party backup software.

How must you configure the StoreOnce system to meet the customer's requirements?

- A. block device
- B. replication target
- C. NDMP target
- D. VTL device

Answer: D

NEW QUESTION 122

- (Exam Topic 2)

You are onsite at a customer location to install a new network switch. The customer wants users to be able to manage the switch through the IP network.

How should you connect the switch to the network?

- A. Configure multiple user IDs or roles for the console connection
- B. Configure the management IP address on the switch and enable Telnet or SSH access
- C. Use a dedicated console cable to create a dedicated management network for every user
- D. Connect the switch to the network by using the serial cable that ships with the switch

Answer: B

NEW QUESTION 123

- (Exam Topic 2)

A customer plans to use HPE ProLiant servers for line-of-business applications. They want to configure the servers to increase reliability.

Which workload profile should the customer use?

- A. Virtualization – Max Performance
- B. Transactional Application Processing
- C. I/O Throughput
- D. Mission Critical

Answer: D

NEW QUESTION 127

- (Exam Topic 2)

When should you use the HPE Switch Selector?

- A. when you need to list the price information of the switches

- B. when you need to select a switch VLAN configuration
- C. when you need to compare features between multiple switches
- D. when you need to perform a competitive analysis between vendors

Answer: C

NEW QUESTION 129

.....

Relate Links

100% Pass Your HPE0-V14 Exam with Exam Bible Prep Materials

<https://www.exambible.com/HPE0-V14-exam/>

Contact us

We are proud of our high-quality customer service, which serves you around the clock 24/7.

Viste - <https://www.exambible.com/>