

Exam Questions 70-740

Installation, Storage, and Compute with Windows Server 2016

<https://www.2passeasy.com/dumps/70-740/>



NEW QUESTION 1

Note: This question is part of a series of questions that present the same scenario. Each question in the series contains a unique solution that might meet the stated goals. Some question sets might have more than one correct solution, while others might not have a correct solution.

After you answer a question in this section, you will NOT be able to return to it. As a result, these questions will not appear in the review screen.

You have two servers that run Windows Server 2016.

You have a server named Server1 that runs Windows Server 2016. Server1 has the Hyper-V server role and Docker installed.

You pull the Microsoft/iis Docker image to Server1.

You need to view the available space in the Microsoft/iis Docker image. Solution: You run the following commands.

```
docker run --name container1 --d Microsoft/iis docker exec --i container1 cmd.exe
```

```
dir
```

Does this meet the goal?

- A. Yes
- B. No

Answer: A

Explanation:

References: https://docs.docker.com/engine/reference/commandline/container_exec/#options <https://www.windows-commandline.com/get-file-size-directory-size-command/>

NEW QUESTION 2

You have two Hyper V hosts named Server1 and Server2 that run Windows Server 2012 R2. The servers are nodes in a failover cluster named Cluster1.

You perform a rolling upgrade of the cluster nodes to Windows Server 2016.

You need to ensure that you can implement the Virtual Machine Load Balancing feature. Which cmdlet should you use?

- A. Update-ClusterNetWorkNameResource
- B. Set-GusterGroupSet
- C. Update-ClusterFunctionalLevel
- D. Set-CauClosterRole

Answer: C

Explanation:

<https://docs.microsoft.com/en-us/windows-server/failover-clustering/cluster-operating-system-rollingupgrade#cluster-os-rolling-upgrade-process>

NEW QUESTION 3

You plan to deploy three servers that will run Windows Server 2016. The servers will be configured as shown in the following table.

Server name	Hard disk configuration
Server1	Disk1: 250-GB, NTFS-formatted Disk2: 4-TB, ReFS-formatted
Server2	Disk1: 1-TB, NTFS-formatted Disk2: 2-TB, NTFS-formatted Disk3: 500-GB, exFAT-formatted
Server3	Disk1: 8-TB, NTFS-formatted Disk2: 2-TB, ReFS-formatted Disk3: 1-TB, ReFS-formatted

You need to ensure that you can use all of the available space on each disk. What is one of the disks that you must initialize as a GPT disk?

- A. Disk2 on Server3
- B. Disk1 on Server2
- C. Disk3 on Server2
- D. Disk1 on Sever3

Answer: D

NEW QUESTION 4

You have a server named Server1 that runs Windows Server 2016. Windows Defender is enabled on Server1.

Server1 runs an application named App1 that stores various types of files in Microsoft OneDrive for Business, MicrosoftOneDrive, and Microsoft SharePoint Online. App1 also interacts with several local services.

You need to prevent Windows Defender from scanning any files opened by App1. What should you do on Server1?

- A. From the Windows Defender settings, configure a file exclusion.
- B. Run the New-CiPolicy cmdlet.
- C. Modify the real-time protection settings in Windows Defender.
- D. From the Windows Defender settings, configure a process exclusion.

Answer: A

NEW QUESTION 5

DRAG DROP

You install a new Nano Server named Nano1. Nano1 is a member of a workgroup and has an IP address of 192.168.1.10.

You have a server named Server1 that runs Windows Server 2016.

From Server1, you need to establish a Windows PowerShell session to Nano1.

How should you complete the PowerShell script? To answer, drag the appropriate cmdlets to the correct targets. Each cmdlet may be used once, more than once, or not at all. You may need to drag the split bar between panes or scroll to view content.

Enable-PSRemoting	\$ip = "192.168.1.10"
Enter-PSSession	\$user = "Administrator"
Set-Item	WSMan:\localhost\Client\TrustedHosts "192.168.1.10"
Set-ItemProperty	-ComputerName \$ip -Credential \$user
Set-LocalUser	

- A. Mastered
- B. Not Mastered

Answer: A

Explanation:

Enable-PSRemoting	\$ip = "192.168.1.10"
Enter-PSSession	\$user = "Administrator"
Set-Item	WSMan:\localhost\Client\TrustedHosts "192.168.1.10"
Set-ItemProperty	-ComputerName \$ip -Credential \$user
Set-LocalUser	

NEW QUESTION 6

You have a Nano Server named Nano1.

Which cmdlet should you use to identify whether the DNS Server role is installed on Nano1?

- A. Find-NanoServerPackage
- B. Get-Package
- C. Find-Package
- D. Get-WindowsOptionalFeature

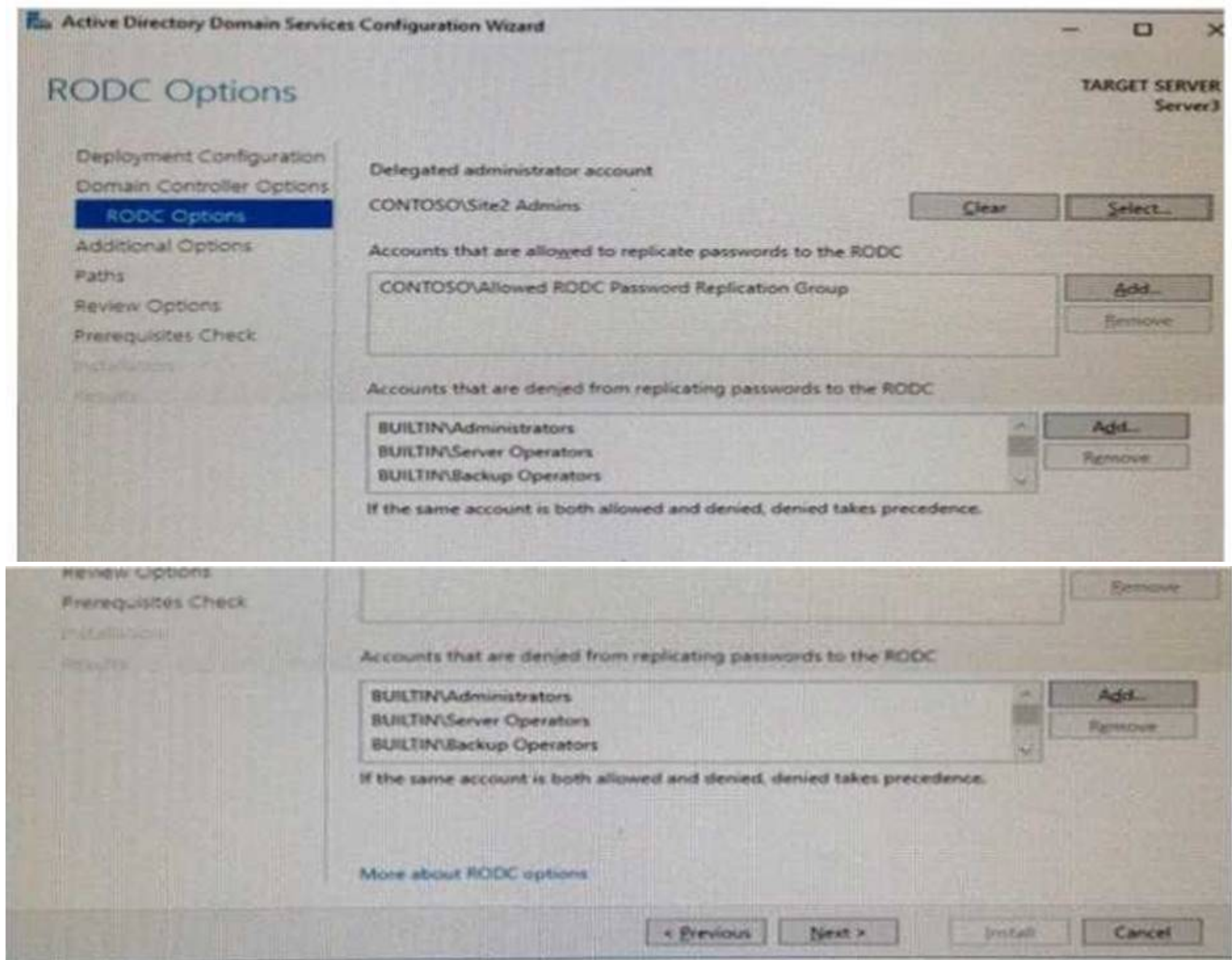
Answer: B

NEW QUESTION 7

HOTSPOT

Your network contains an Active Directory forest. The forest contains two sites named Site1 and Site2. Site1 contains 10 domain controllers. Site1 and Site2 connect to each other by using a WAN link.

You run the Active Directory Domain Services Configuration Wizard as shown in the following graphic.



Server3 is the only server in Site2

Use the drop-down menus to select the answer choice that completes each statement based on the information graphic.

Members of the Site2 Admins group will be able to [answer choice] on Server 3.

make updates to SYSVOL content
 manage the password replication policy
 stop and start Active Directory Domain Services (AD DS)

If the WAN link fails, users who are members of the Allowed RODC Password Replication Group [answer choice] in Site2.

will be prevented from logging on
 will log on with reduced security rights
 can log on if they have previously logged on

- A. Mastered
- B. Not Mastered

Answer: A

Explanation:

Members of the Site2 Admins group will be able to [answer choice] on Server 3.

▼

make updates to SYSVOL content
manage the password replication policy
stop and start Active Directory Domain Services (AD DS)

If the WAN link fails, users who are members of the Allowed RODC Password Replication Group [answer choice] in Site2.

▼

will be prevented from logging on
will log on with reduced security rights
can log on if they have previously logged on

NEW QUESTION 8

DRAG DROP

You have a server named Server1 that runs Windows Server 2016.
You plan to deploy Internet Information Services (US) in a Windows container. You need to prepare Server1 for the planned deployment.
Which three actions should you perform in sequence? To answer, move the appropriate actions from the list of actions to the answer area and arrange them in the correct order

Actions

Install the Hyper-V server role.

Install the Base Container Images.

Install the Container feature.

Install the Web Server role.

Install Docker.

Answer Area

1.

2.

3.

➤

➤

⬅

⬆

⬇

- A. Mastered
- B. Not Mastered

Answer: A

Explanation:

Answer Area

1. Install the Container feature.
2. Install Docker.
3. Install the Base Container Images.

NEW QUESTION 9

You have a server named Served that runs Windows Server 2016. Server1 will be used as a VPN server. You need to configure Server1 to support VPN Reconnect. Which VPN protocol should you use?

- A. PPTP
- B. L2TP
- C. SSTP
- D. IKEv2

Answer: D

NEW QUESTION 10

You have an Active Directory domain named Contoso.com. The domain contains servers named Server1 and Server2 that run Windows Server 2016. You install the Remote Access server role on Server1. You install the Network Policy and Access Services server role on Server2. You need to configure Server1 to use Server2 as a RADIUS server. What should you do?

- A. From Routing and Remote Access, configure the authentication provider.
- B. From the Connection Manager Administration Kit, create a Connection Manager profile.
- C. From Server Manager, create an Access Policy.
- D. From Active Directory Users and Computers, modify the Delegation settings of the Server1 computer account.

Answer: A

NEW QUESTION 10

HOTSPOT

You have a server that runs Windows Server 2016. You run the commands shown in the following output.


```
PS G:\> Get-DedupVolume | fl

Volume                : G:
VolumeId              : \\?\Volume{2efa2f6e-db4a-4bb1-aal5-31ae8b073d16}\
Enabled               : True
UsageType             : Default
DataAccessEnabled     : True
Capacity              : 923.87 GB
FreeSpace             : 393.98 GB
UsedSpace             : 529.89 GB
UnoptimizedSize       : 1008.7 GB
SavedSpace            : 478.82 GB
SavingRate            : 47 %
MinimumFileAgeDays    : 3
MinimumFileSize       : 32768
NoCompress            : False
ExcludeFolder         : 
ExcludeFileType       : 
ExcludeFileTypeDefault : {edb, jrs}
NoCompressionFileType : {asf, mov, wma, wmv...}
ChunkRedundancyThreshold : 100
Verify               : False
OptimizeInUseFiles    : False
OptimizePartialFiles  : False

PS G:\> Get-Date
Tuesday, June 21, 2016 5:29:58 PM

PS G:\DC01> dir | select Mode,LastWriteTime,Length,Name | ft -AutoSize

Mode      LastWriteTime           Length      Name
----      -
d-----  2/18/2015 11:54:56 AM              Snapshots
d-----  2/18/2015 12:11:42 PM              Virtual Machines
-a---    6/21/2016  5:27:40 PM    51539608064  DC01.vhd
-a---    6/18/2016  7:00:00 AM    12400        Readme.txt
-a---    1/5/2015   7:00:00 AM    3939235840   Software.iso
```

For each of the following statements, select Yes if the statement is true. Otherwise, select No.

Answer Area

Statements	Yes	No
DC01.vhd will be processed by deduplication.	<input type="radio"/>	<input type="radio"/>
Readme.txt will be processed by deduplication.	<input type="radio"/>	<input type="radio"/>
Software.iso will be processed by deduplication.	<input type="radio"/>	<input type="radio"/>

- A. Mastered
- B. Not Mastered

Answer: A

Explanation:

Answer Area

Statements	Yes	No
DC01.vhd will be processed by deduplication.	<input type="radio"/>	<input checked="" type="radio"/>
Readme.txt will be processed by deduplication.	<input type="radio"/>	<input checked="" type="radio"/>
Software.iso will be processed by deduplication.	<input checked="" type="radio"/>	<input type="radio"/>

NEW QUESTION 14

You have a server that runs Windows Server 2016.

The server contains a storage pool named Pool1. Pool1 contains five physical disks named Disk1, Disk2, Disk3, Disk4, and Disk5.

A virtual disk named VirtualDisk1 is stored in pool1. VirtualDisk1 uses the parity storage layout. Disk3 fails.

You need to remove Disk3 from Pool1.

Which two commands should you run? Each correct answer presents part of the solution.

- A. Update-StoragePool -FriendlyName Pool1
- B. Set-ResiliencySetting -StoragePool Pool1 -PhysicalDiskRedundancyDefault 4
- C. Reset-PhysicalDisk -FriendlyName Disk3
- D. Set-PhysicalDisk -FriendlyName Disk3 -Usage Retired
- E. Remove-PhysicalDisk -FriendlyName Disk3

Answer: BE

NEW QUESTION 16

Your network contains an Active Directory domain named contoso.com. The domain contains two servers named Server1 and Server2 that have the same hardware configuration.

You need to asynchronously replicate volume F: from Server1 to Server2. What should you do?

- A. Run New-SRPartnership and specify the -ReplcationMode parameter.
- B. Install the Failover Clustering feature and create a new cluster resource group.
- C. Install the Failover Clustering feature and use Cluster Shared Volumes (CSV).
- D. Run Set-DfsrServiceConfiguration and specify the -RPCPort parameter.

Answer: A

NEW QUESTION 18

HOTSPOT

You have a server named Server1 that runs Windows Server 2016. Server1 has the Windows Application Proxy role service installed.

You plan to deploy Remote Desktop Gateway (RD Gateway) services. Clients will connect to the RD Gateway services by using various types of devices including Windows, iOS, and Android devices.

You need to publish the RD Gateway services through the Web Application Proxy.

Which command should you run? To answer, select the appropriate options in the answer area.

Add-WebApplicationProxyApplication
Set-WebApplicationProxyApplication
Set-WebApplicationProxyConfiguration

-BackendServerURL 'https://rdg.contoso.com/rdg1/'
-ExternalCertificateThumbprint
'1a2b3c4d5e6f1a2b3c4d5e6f1a2b3c4d5e6f1a2b'
-ExternalURL 'https://rdg.contoso.com/rdg1'
-Name 'RDG1'

-ExternalPreAuthentication

ADFS
ADFSforOAuth
ClientCertificate
PassThrough

-ADFSRelyingPartyName 'Default provider'

-BackendServerAuthenticationSPN 'HTTP/RDG1'

- A. Mastered
B. Not Mastered

Answer: A

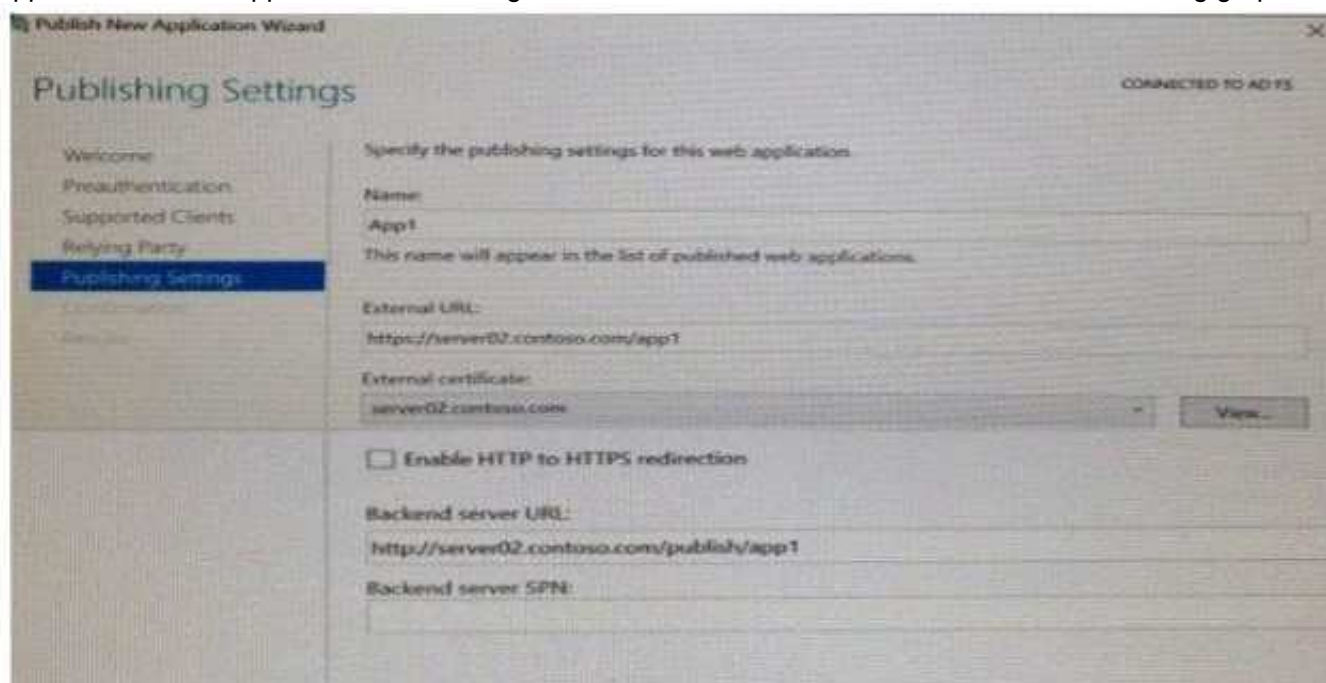
Explanation:



NEW QUESTION 22

HOTSPOT

You have a server named Served that runs Windows Server 2016. Server1 has the Windows Application Proxy role service installed. You are publishing an application named App1 that will use Integrated Windows authentication as shown in the following graphic.



Use the drop-down menus to select the answer choice that completes each statement based on the information presented in the graphic

Before you can complete the wizard, you must [answer choice]

change the external certificate
configure the Backend server SPN
select Enable HTTP to HTTPS redirection

To ensure that users can access App1 externally, you must
change the External URL to [answer choice.]

https://app1.contoso.com/app1
https://server02.contoso.com/app1
https://server02.contoso.com/publish/app1

- A. Mastered
B. Not Mastered

Answer: A

Explanation:

Before you can complete the wizard, you must [answer choice]

☐

change the external certificate
 configure the Backend server SPN
 select Enable HTTP to HTTPS redirection

To ensure that users can access App1 externally, you must change the External URL to [answer choice.]

☐

https://app1.contoso.com/app1
 https://server02.contoso.com/app1
 https://server02.contoso.com/publish/app1

NEW QUESTION 26

HOTSPOT

You have a server named Server1 that runs Windows Server 2016 Server1 has the Web Application Proxy role service installed

You publish an application named App1 by using the Web Application Proxy.

You need to change the URL that users use to connect to App1 when they work remotely. Which command should you run? To answer, select the appropriate options in the answer area

☐

Set-WebApplicationProxySslCertificate
 Set- WebApplicationProxyApplication
 Set- WebApplicationProxyConfiguration

-ID 874A4543-7983-77A3-1E6D-1163E7419AC1

☐

-ADFSUrl
 -BackendServerURL
 -ExternalURL

https://SP.Contoso.com

- A. Mastered
- B. Not Mastered

Answer: A

Explanation:

☐

Set-WebApplicationProxySslCertificate
 Set- WebApplicationProxyApplication
 Set- WebApplicationProxyConfiguration

-ID 874A4543-7983-77A3-1E6D-1163E7419AC1

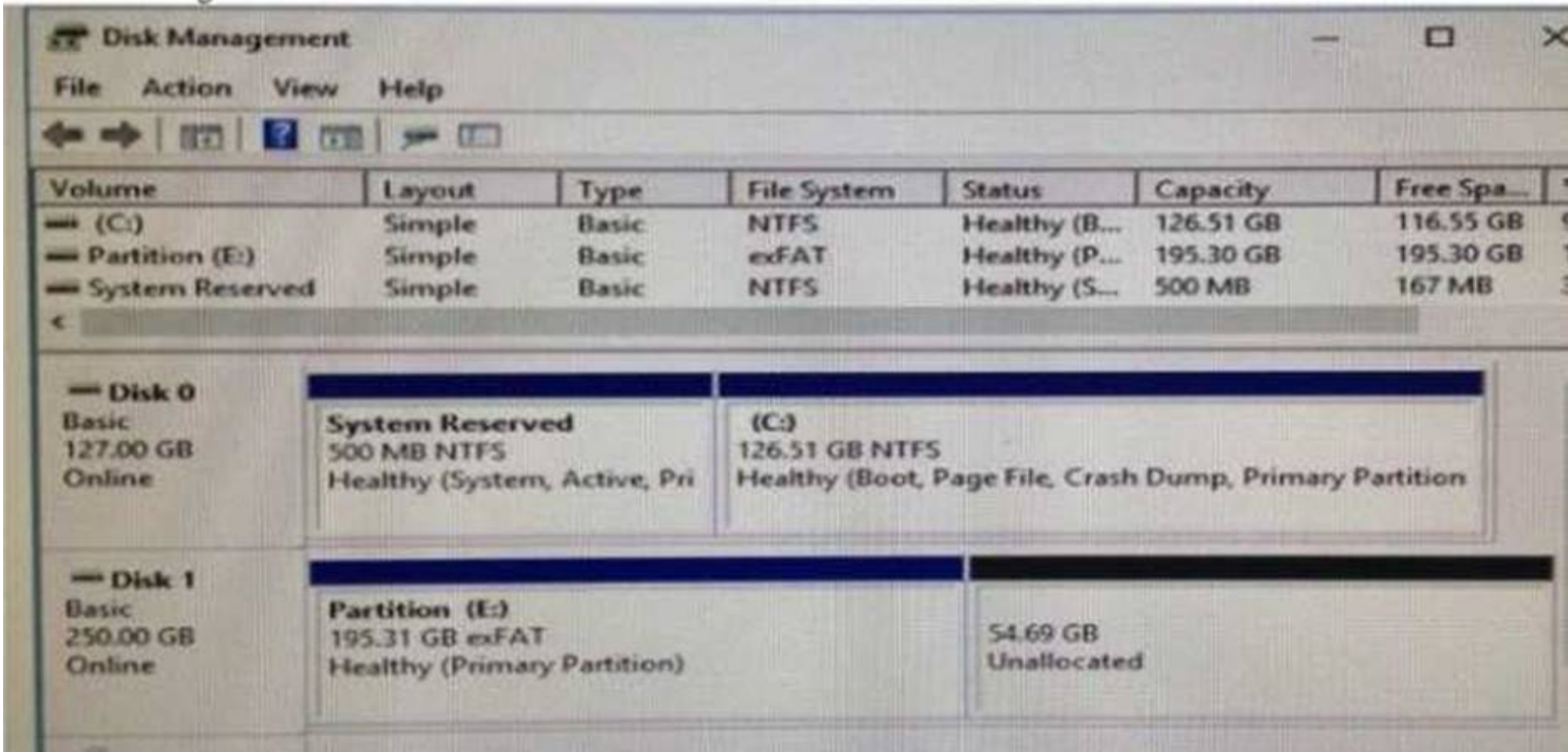
☐

-ADFSUrl
 -BackendServerURL
 -ExternalURL

https://SP.Contoso.com

NEW QUESTION 27

You have a server named Server 1 that runs Windows Server 2016. The disk configuration for Server 1 is shown in the exhibit.



You add Server1 to a cluster. You need to ensure that you can use Disk1 (or Storage Spaces Direct). What should you do first?

- A. Delete Partition (E:)
- B. Set Disk1 to offline.
- C. Convert Disk 1 to a dynamic disk
- D. Convert Partition (E:) to ReFS

Answer: A

NEW QUESTION 30

HOTSPOT

Your network contains an Active Directory forest named contoso.com. The forest contains an Active Directory Federation Services (AD FS) farm. You install Windows Server 2016 on a server named Server2. You need to configure Server2 as a node in the federation server farm. Which cmdlets should you run? To answer, select the appropriate options in the answer area.

First cmdlet to run:

Install-AdfsFarm
Install-Package
Install-WindowsFeature

Second cmdlet to run:

Install-AdfsFarm
New-AdfsOrganization
Set-AdfsFarmInformation
Set-AdfsProperties

- A. Mastered
- B. Not Mastered

Answer: A

Explanation:

First cmdlet to run:

▼

Install-AdfsFarm
Install-Package
Install-WindowsFeature

Second cmdlet to run:

▼

Install-AdfsFarm
New-AdfsOrganization
Set-AdfsFarmInformation
Set-AdfsProperties

NEW QUESTION 32

DRAG DROP

You have a server named Server1 that runs Windows Server 2016.

You need to deploy the first node cluster of a Network Controller cluster

Which four cmdlets should you run in sequence? To answer, move the appropriate cmdlets from the list of cmdlets to the answer area and arrange them in the correct order

Actions

Install-WindowsFeature

New-NetworkControllerNodeObject

Enable-NetworkControllerNode

Install-NetworkController

Install-NetworkControllerCluster

Answer Area

1.

2.

3.

4.

- A. Mastered
- B. Not Mastered

Answer: A

Explanation:

Install-WindowsFeature

New-NetworkControllerNodeObject

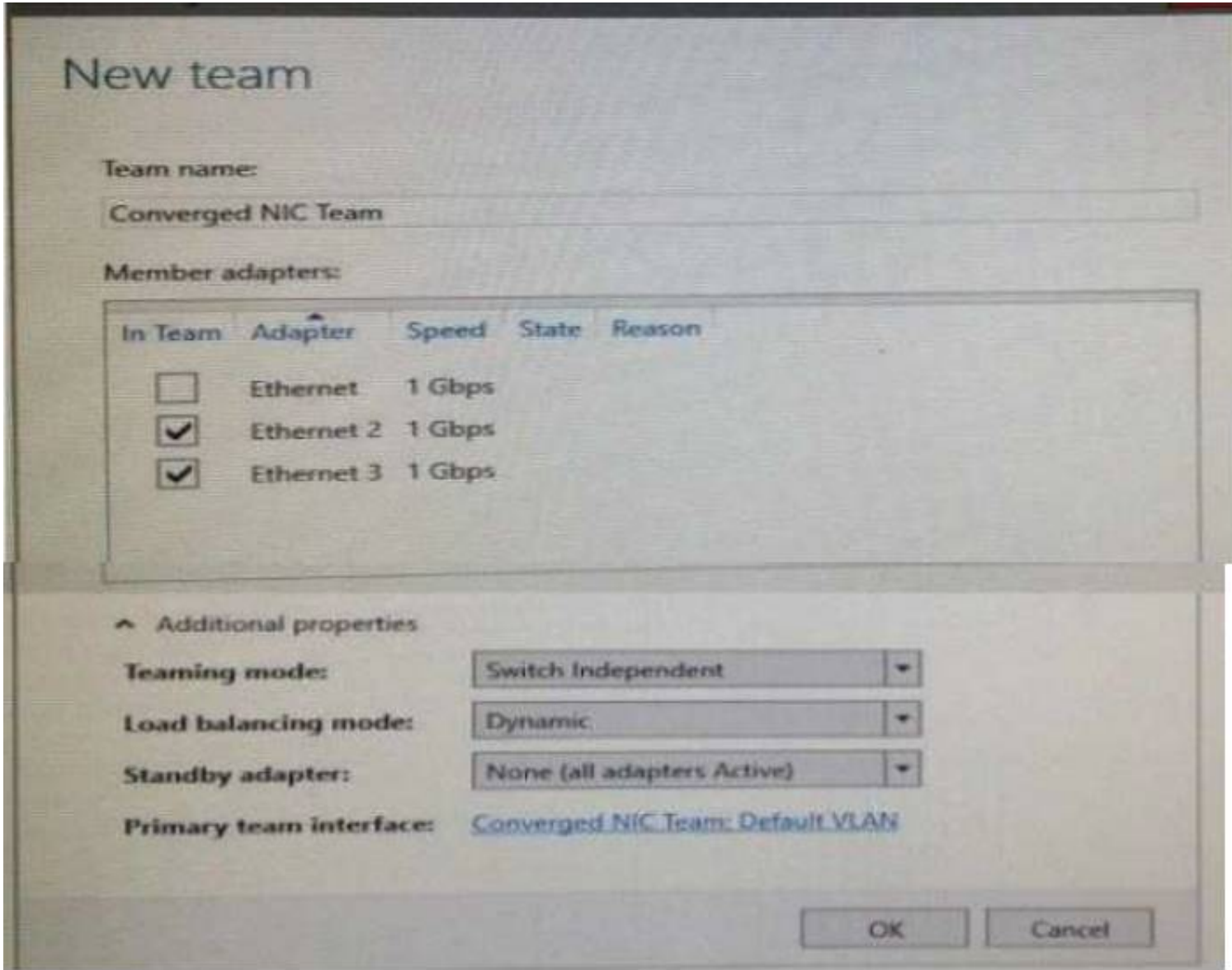
Install-NetworkControllerCluster

Install-NetworkController

NEW QUESTION 37

You have a server named Server1 that runs Windows Server 2016. Server1 is a Hyper-V host that hosts a virtual machine named VM1. Server1 has three network adapter cards That connect to a virtual switch named vSwitch1.

You configure NIC Teaming on VM1 as shown in the exhibit.



You need to ensure that VM1 will retain access to the network if a physical adapter card fails on Server1. What should you do?

- A. From Hyper-V Manager on Server1, modify the settings of VM1.
- B. From Windows PowerShell on Server1, run theSet-VmSwitchcmdlet.
- C. From the properties of the NIC team on VM1, add the adapter named Ethernet to the NIC tea
- D. D.From the properties of the NIC team on VM1. change the load balancing of the NIC team.

Answer: A

NEW QUESTION 41

HOTSPOT

You have a machine named VM1 that runs Windows Server 2016 VM1 is a Remote Desktop Services (RDS) server. You need to ensure that only TCP port 3389 can be used to connect to VM1 over the network. Which command should you run on the Hyper-V host? To answer, select the appropriate options in the answer area.

▼

Add-VmNetworkAdapterAcl
Add-VmNetworkAdapterExtendedAcl
Set-VmNetworkAdapter
Set-VmNetworkAdapterRoutingDomain
Mapping

-VMName VM1 -Direction

▼

Inbound
Outbound

- A. Mastered
- B. Not Mastered

Answer: A

Explanation:

▼

Add-VmNetworkAdapterAcl
Add-VmNetworkAdapterExtendedAcl
Set-VmNetworkAdapter
Set-VmNetworkAdapterRoutingDomain
Mapping

-VMName VM1 -Direction

▼

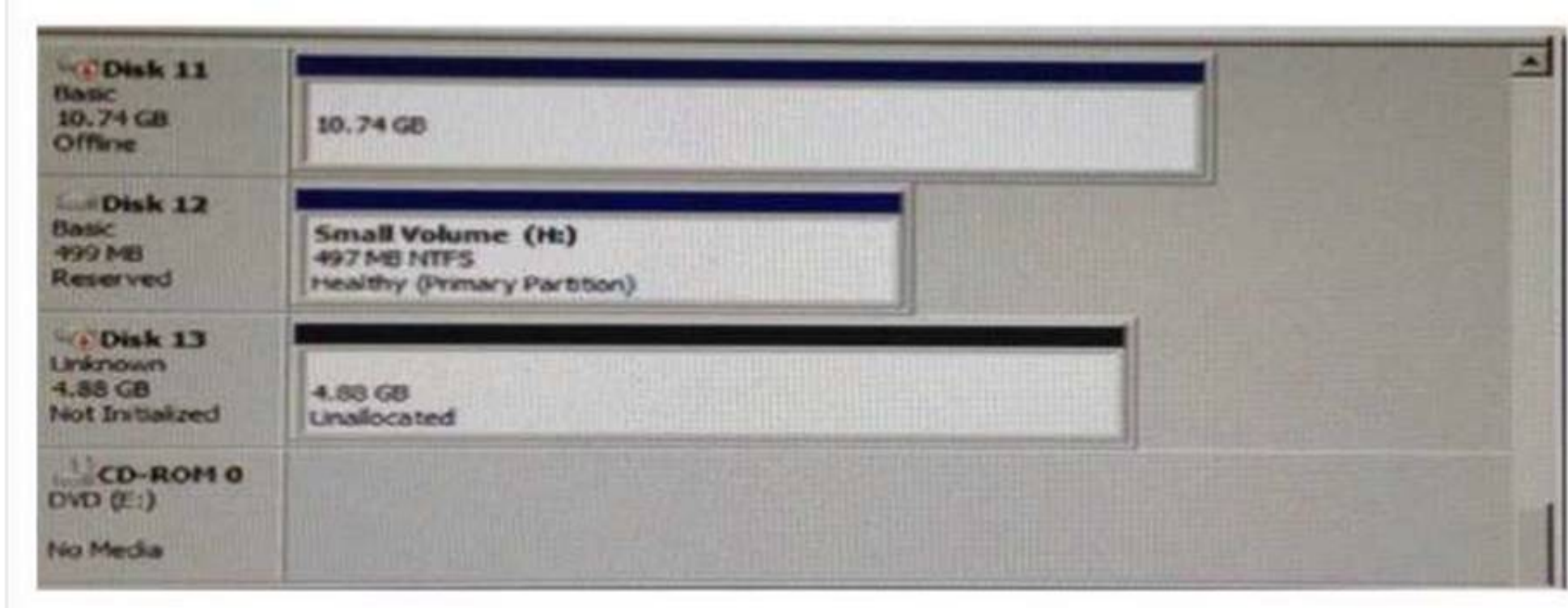
Inbound
Outbound

-Action Allow -LocalPort 3389 -Protocol TCP -Weight 10

NEW QUESTION 42

HOTSPOT

You have a server named Server1 that runs Windows Server 2016 and has the Hyper-V server role installed. You open Disk Management on Server1 as shown in the following graphic.



You plan to configure Disk13 as a pass-through disk for a generation 1 virtual machine. Use the drop-down menus to select the answer choice that completes each statement based on the information presented in the graphic.

The status of Disk 13 must be set to [answer choice.]

▼

Initializing

Offline

Online

If the virtual machine uses Disk 13 as the system partition, Disk 13 must be attached to [answer choice] in Hyper-V Manager.

▼

a Fibre Channel adapter

an IDE controller

a SCSI controller

- A. Mastered
- B. Not Mastered

Answer: A

Explanation:

The status of Disk 13 must be set to [answer choice.]

▼

Initializing

Offline

Online

If the virtual machine uses Disk 13 as the system partition, Disk 13 must be attached to [answer choice] in Hyper-V Manager.

▼

a Fibre Channel adapter

an IDE controller

a SCSI controller

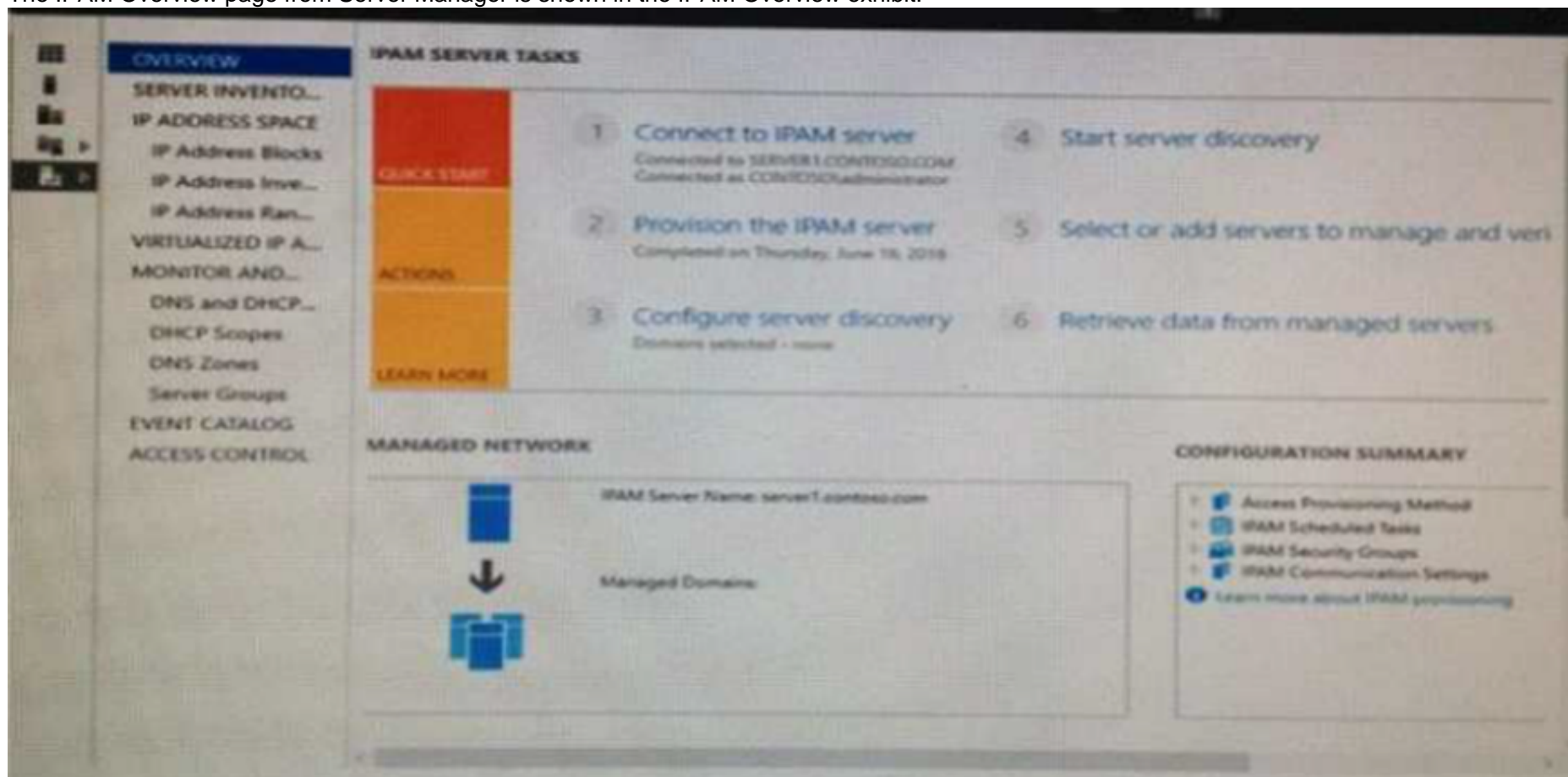
NEW QUESTION 43

HOTSPOT

Your company has a testing environment that contains an Active Directory domain named contoso.com. The domain contains a server named Server1 that runs Windows Server 2016. Server1 has IP Address Management (IPAM) installed. IPAM has the following configuration.

Version : 6.3.0.1
 Port : 4885
 ProvisioningMethod : Automatic
 GpoPrefix : IPAM
 HMACKey : System.Security.SecureString

The IPAM Overview page from Server Manager is shown in the IPAM Overview exhibit.



The group policy configurations are shown in the GPO exhibit.



For each of the following statements, select Yes if the statement is true. Otherwise, select No.

Statements	Yes	No
If a DNS server is added to contoso.com, the server will be discovered by IPAM automatically.	<input type="radio"/>	<input type="radio"/>
If you manually add a DHCP server named Server3 to IPAM and set the Manageability status to Managed, the IPAM_DHCP Group Policy will apply to Server3.	<input type="radio"/>	<input type="radio"/>
If you click Start server discovery, the domain controllers in contoso.com will be discovered by IPAM.	<input type="radio"/>	<input type="radio"/>

- A. Mastered
 B. Not Mastered

Answer: A

Explanation:

Statements	Yes	No
If a DNS server is added to contoso.com, the server will be discovered by IPAM automatically.	<input type="radio"/>	<input checked="" type="radio"/>
If you manually add a DHCP server named Server3 to IPAM and set the Manageability status to Managed, the IPAM_DHCP Group Policy will apply to Server3.	<input checked="" type="radio"/>	<input type="radio"/>
If you click Start server discovery, the domain controllers in contoso.com will be discovered by IPAM.	<input type="radio"/>	<input checked="" type="radio"/>

NEW QUESTION 44

You need to ensure that VM1 and VM2 can communicate with each other only. The solution must prevent VM1 and VM2 from communicating with Server1. Which cmdlet should you use?

- A. Set-NetNeighbor
 B. Remove-VMSwitchTeamMember
 C. Set-VMSwitch
 D. Enable-VMSwitchExtension

Answer: C

NEW QUESTION 46

Note: This question is part of a series of questions that use the same similar answer choices An answer choice may be correct for more than one question in the series Each question is independent of the other questions in this series. Information and details provided in a question apply only to that question

You have three servers named Server1, Server2, Server3 that run Windows Server 2016 Server1 and Server2 have the Hyper-V server role installed Server3 has the iSCSI Target Server role service installed.

Server name	Components installed
Server1	Hyper-V server role
Server2	Hyper-V server role
Server3	iSCSI Target Server role service

You need to create a Hyper-V cluster Which tool should you use first?

- A. the clussvc.exe command
 B. the cluster.exe command
 C. the Computer Management console
 D. the configurehyperv.exe command
 E. the Disk Management console

- F. the Failover Cluster Manager console
- G. the Hyper-V Manager console
- H. the Server Manager Desktop app

Answer: H

NEW QUESTION 48

Note: This question is part of a series of questions that use the same similar answer choices An answer choice may be correct for more than one question in the series Each question is independent of the other questions in this series. Information and details provided in a question apply only to that question

You have two servers named Server1 and Server2 that run Windows Server 2016 Server1 and Server2 have the Hyper-V server role installed

An iSCSI SAN connects to the network

You create a LUN on the SAN and configure both servers to connect to the iSCSI target

You create a failover cluster and add Server1 and Server2 to the cluster. You connect both servers to the iSCSI target and format the shared storage

You need to add the shared storage to the cluster The solution must ensure that virtual machines running on both nodes can access the shared storage simultaneously.

Which tool should you use?

- A. the clussvc.exe command
- B. the cluster.exe command
- C. the Computer Management console
- D. the configurehyperv.exe command
- E. the Disk Management console
- F. the Failover Cluster Manager console
- G. the Hyper-V Manager console
- H. the Server Manager Desktop app

Answer: F

NEW QUESTION 53

Note: This question is part of a series of questions that use the same similar answer choices An answer choice may be correct for more than one question in the series Each question is independent of the other questions in this series. Information and details provided in a question apply only to that question

You have a Hyper-V host named Server1 that runs Windows Server 2016 Server1 has a dynamically expanding virtual hard disk (VHD) file that is 900 GB The VHD contains 400 GB of free space.

You need to reduce the amount of disk space used by the VHD. What should you run?

- A. the Mount-VHD cmdlet
- B. the Diskpart command
- C. the Set-VHD cmdlet
- D. the Set-VM cmdlet
- E. the Set-VMHost cmdlet
- F. the Set-VMProcessor cmdlet
- G. the Install-WindowsFeature cmdlet
- H. the Optimize-VHD cmdlet

Answer: H

NEW QUESTION 54

Note: This question is part of a series of questions that use the same similar answer choices An answer choice may be correct for more than one question in the series Each question is independent of the other questions in this series. Information and details provided in a question apply only to that question

You have a Hyper-V host named Server1 that runs Windows Server 2016 You plan to deploy several shielded virtual machines on Server1

You deploy a Host Guardian on a new server

You need to ensure that Server1 can host shielded virtual machines. What should you run first?

- A. the Mount-VHD cmdlet
- B. the Diskpart command
- C. the Set-VHD cmdlet
- D. the Set-VM cmdlet
- E. the Set-VMHost cmdlet
- F. the Set-VMProcessor cmdlet
- G. the Install-WindowsFeature cmdlet
- H. the Optimize-VHD cmdlet

Answer: G

NEW QUESTION 55

In this section, you'll see one or more sets of questions with the same scenario and problem Each

question presents a unique solution to the problem, and you must determine whether the solution meets the stated goals Any of the solutions might solve the problem. It is also possible that none of the solutions solve the problem.

Once you answer a question in this section, you will NOT be able to return to it As a result, these questions will not appear in the review screen

Note This question is part of a series of questions that present the same scenario Each question in the series contains a unique solution Determine whether the solution meets the stated goals.

Your network contains an Active Directory forest named contoso.com. The forest contains a member server named Server1 that runs Windows Server 2016 All domain controllers run Windows Server 2012 R2

Contoso com has the following configuration


```
PS C:\> (Get-ADForest). ForestMode
Windows2008R2Forest

PS C:\> (Get-ADDomain). DomainMode
Windows2008R2Domain
PS C:\>
```

You plan to deploy an Active Directory Federation Services (AD FS) farm on Server1 and to configure device registration You need to configure Active Directory to support the planned deployment. Solution You raise the domain functional level to Windows Server 2012R2. Does this meet the goal?

- A. Yes
- B. No

Answer: B

NEW QUESTION 56

In this section, you'll see one or more sets of questions with the same scenario and problem Each question presents a unique solution to the problem, and you must determine whether the solution meets the stated goals. Any of the solutions might solve the problem. It is also possible that none of the solutions solve the problem. Once you answer a question in this section, you will NOT be able to return to it. As a result, these questions will not appear in the review screen Note: This question is part of a series of questions that present the same scenario. Each question in the series contains a unique solution. Determine whether the solution meets the stated goals. Your network contains an Active Directory domain named contoso.com. The domain contains a DNS server named Server1. All client computers run Windows 10. On Server1, you have the following zone configuration

ZoneName	ZoneType	IsAutoCreated	IsDsIntegrated	IsReverseLookupZone	IsSign
-----	-----	-----	-----	-----	-----
_msdcs.contoso.com	Primary	False	True	False	False
adatum.com	Forwarder	False	False	False	
contoso.com	Primary	False	True	False	False
fabrikam.com	Primary	False	False	False	True
TrustAnchors	Primary	False	True	False	False

You have the following subnets defined on Server1.

Name	IPv4Subnet	IPv6Subnet
----	-----	-----
Subnet1	{10.0.0.0/24}	
Subnet2	{10.0.1.0/24}	
Subnet3	{192.168.15.0/24}	
Subnet4	{172.16.1.0/24}	

You need to prevent Server1 from resolving queries from DNS clients located on Subnet4 Server1 must resolve queries from all other DNS clients Solution From the Security setting of each zone on Server1, you modify the permissions Does this meet the goal?

- A. Yes
- B. No

Answer: B

NEW QUESTION 58

In this section, you'll see one or more sets of questions with the same scenario and problem Each question presents a unique solution to the problem, and you must determine whether the solution meets the stated goals. Any of the solutions might solve the problem. It is also possible that none of the solutions solve the problem. Once you answer a question in this section, you will NOT be able to return to it. As a result, these questions will not appear in the review screen Note: This question is part of a series of questions that present the same scenario. Each question in the series contains a unique solution. Determine whether the solution meets the stated goals. Your network contains an Active Directory domain named contoso.com. The domain contains a DNS server named Server1. All client computers run Windows 10. On Server1, you have the following zone configuration

ZoneName	ZoneType	IsAutoCreated	IsDsIntegrated	IsReverseLookupZone	IsSign
-----	-----	-----	-----	-----	-----
_msdcs.contoso.com	Primary	False	True	False	False
adatum.com	Forwarder	False	False	False	False
contoso.com	Primary	False	True	False	False
fabrikam.com	Primary	False	False	False	True
TrustAnchors	Primary	False	True	False	False

You have the following subnets defined on Server1.

Name	IPv4Subnet	IPv6Subnet
-----	-----	-----
Subnet1	{10.0.0.0/24}	
Subnet2	{10.0.1.0/24}	
Subnet3	{192.168.15.0/24}	
Subnet4	{172.16.1.0/24}	

You need to prevent Server1 from resolving queries from DNS clients located on Subnet4 Server1

must resolve queries from all other DNS clients

Solution From Windows Firewall with Advanced Security on Server1, you create an inbound rule Does this meet the goal?

- A. Yes
- B. No

Answer: A

NEW QUESTION 59

In this section, you'll see one or more sets of questions with the same scenario and problem Each

question presents a unique solution to the problem, and you must determine whether the solution meets the stated goals Any of the solutions might solve the problem. It is also possible that none of the solutions solve the problem.

Once you answer a question in this section, you will NOT be able to return to it As a result, these questions will not appear in the review screen

Note This question is part of a series of questions that present the same scenario Each question in the series contains a unique solution Determine whether the solution meets the stated goals.

Your network contains an Active Directory forest named contoso.com. The forest contains a member server named Server1 that runs Windows Server 2016 All domain controllers run Windows Server 2012 R2

Contoso com has the following configuration

```
PS C:\> (Get-ADForest). ForestMode
Windows2008R2Forest

PS C:\> (Get-ADDomain). DomainMode
Windows2008R2Domain
PS C:\>
```

You plan to deploy an Active Directory Federation Services (AD FS) farm on Server1 and to configure

device registration You need to configure Active Directory to support the planned deployment. Solution You raise the forest functional level to Windows Server 2012R2.

Does this meet the goal?

- A. Yes
- B. No

Answer: A

NEW QUESTION 61

Note: This question is part of a series of questions that present the same scenario. Each question in

the series contains a unique solution that might meet the stated goals. Some question sets might have more than one correct solution, while others might not have a correct solution.

After you answer a question in this section, you will NOT be able to return to it. As a result, these questions will not appear in the review screen.

You have two servers that run Windows Server 2016.

You plan to create a Network Load Balancing (NLB) cluster that will contain both servers. You need to configure the network cards on the servers for the planned NLB configuration.

Solution: You configure the network cards to be on the same subnet and to have static IP addresses. You configure the cluster to use multicast.

Does this meet the goal?

- A. Yes
- B. No

Answer: A

Explanation:

References:

<https://technet.microsoft.com/en-us/windows-server-docs/networking/technologies/network-load-balancing>

NEW QUESTION 63

Note: This question is part of a series of questions that present the same scenario. Each question in the series contains a unique solution that might meet the stated goals. Some question sets might have more than one correct solution, while others might not have a correct solution.

After you answer a question in this section, you will NOT be able to return to it. As a result, these questions will not appear in the review screen.

You have two servers that run Windows Server 2016.

You plan to create a Network Load Balancing (NLB) cluster that will contain both servers. You need to configure the network cards on the servers for the planned NLB configuration.

Solution: You configure the network cards to be on the same subnet and to have static IP addresses. You configure the cluster to use unicast.

Does this meet the goal?

A. Yes

B. No

Answer: A

Explanation:

References:

<https://technet.microsoft.com/en-us/windows-server-docs/networking/technologies/network-load-balancing>

NEW QUESTION 66

Note This question is part of a series of questions that present the same scenario. Each question in the series contains a unique solution that might meet the stated goals. Some question sets might have more than one correct solution, while others might not have a correct solution.

After you answer a question in this section, you will NOT be able to return to it. As a result, these questions will not appear in the review screen.

You are a server administrator at a company named Contoso, Ltd.

Contoso has a Windows Server 2016 Hyper-V environment configured as shown in the following table.

Hyper-V host name	Configuration	Virtual switch name
Host1	- Uses an Intel processor - Is a member of a SAN named SAN1	Switch1
Host2	- Uses an AMD processor - Has local storage only	Switch2
Host3	- Uses an Intel processor - Is a member of a SAN named SAN1	Switch1
Host4	- Uses an Intel processor - Has local storage only	Switch2

All of the virtual switches are of the external type.

You need to ensure that you can move virtual machines between the hosts without causing the virtual machines to disconnect from the network.

Solution: You implement live migration by using Host1 and Host2. Does this meet the goal?

A. Yes

B. No

Answer: B

NEW QUESTION 69

Note: This question is part of a series of questions that present the same scenario. Each question in the series contains a unique solution that might meet the stated goals. Some question sets might have more than one correct solution, while others might not have a correct solution.

Your network contains an Active Directory forest.

You install Windows Server 2016 on 10 virtual machines.

You need to deploy the Web Server (IIS) server role identically to the virtual machines.

Solution: You use Windows PowerShell Desired State Configuration (DSC) to create a default configuration and then you apply the configuration the virtual

A. Yes

B. No

Answer: A

Explanation:

References:

<https://www.simple-talk.com/sysadmin/powershell/powershell-desired-state-configuration-the-basics/>

NEW QUESTION 74

HOTSPOT

You have a server named Server1 that runs Windows Server 2016 server.
Server1 has the Docker daemon configured and has a container named Container1.
You need to mount the folder C:\Folder1 on Server1 to C:\ContainerFolder in Container1.
Which command should you run? To answer, select the appropriate options in the answer area.

Answer Area

<div>▼</div> <div>Copy-ContainerFile</div> <div>Docker</div> <div>Set-Service</div>	<div>▼</div> <div>-Name Container1 -Path</div> <div>run -it -v</div>	<div>▼</div> <div>C:\Folder1:C:\ContainerFolder</div> <div>%windir%\ContainerFolder</div>	<div>▼</div> <div>Container1</div> <div>Server1</div>
---	--	---	---

- A. Mastered
- B. Not Mastered

Answer: A

Explanation:

Answer Area

<div>▼</div> <div>Copy-ContainerFile</div> <div>Docker</div> <div>Set-Service</div>	<div>▼</div> <div>-Name Container1 -Path</div> <div>run -it -v</div>	<div>▼</div> <div>C:\Folder1:C:\ContainerFolder</div> <div>%windir%\ContainerFolder</div>	<div>▼</div> <div>Container1</div> <div>Server1</div>
---	--	---	---

NEW QUESTION 76

You have an Active Director domain named Contoso.com. The domain contains servers named Server 1, Server2 and Server3 that run Windows Server 2016
Server1 and Server2 are nodes in a Hyper V cluster named Cluster1. You add a Hyper V Replica Broker role named Broker 1 to Cluster 1
Server3 is a Hyper-V server. A virtual machine named VM1 runs on Server3.
Live Migration is enabled on all three servers and it is configured to use Kerberos authentication only. You need to ensure that you can perform the migration of VM1 to Server2
What should you do?

- A. Modify the Storage Migration settings on Server3
- B. Modify the Cluster Permissions for Cluster1.
- C. Add the Server3 computer account to the Replicator group on Server1 and Server2.
- D. Modify the Delegation settings for the Server3 computer account.

Answer: D

Explanation:

References:
[https://technet.microsoft.com/en-us/library/jj134199\(v=ws.11\).aspx#BKMK_Step1](https://technet.microsoft.com/en-us/library/jj134199(v=ws.11).aspx#BKMK_Step1)

NEW QUESTION 81

HOTSPOT

You implement a Windows Server 2016 failover cluster named Cluster1 as a highly available file server.
You run the Get-Cluster cmdlet and receive the following output.

AddEvictDelay	: 60
AdministrativeAccessPoint	: Dns
AutoAssignNodeSite	: 0
AutoBalancerMode	: 2
AutoBalancerLevel	: 1
ClusSvcHangTimeout	: 135
ClusSvcRegroupStageTimeout	: 5
ClusSvcRegroupTickInMilliseconds	: 300
ClusterEnforcedAntiAffinity	: 0
ClusterFunctionalLevel	: 9
ClusterUpgradeVersion	: 7
ClusterGroupWaitDelay	: 120
ClusterLogLevel	: 3
ClusterLogSize	: 300
DatabaseReadWriteMode	: 0
DefaultNetworkRole	: 3
Description	:
Domain	: contoso.com
EnableSharedVolumes	: Enabled
FixQuorum	: 0
Id	: ec6121be-f816-426b-b550-72cafb943f1b
Name	: cluster1

Use the drop-down menus to select the answer choice that completes each statement based on the information presented in the graphic.

Answer Area

You can perform Cluster-Aware Updating (CAU) in **[answer choice]**.

	▼
self-updating mode only	
remote-updating mode only	
remote-updating mode and self-updating mode	

You can use **[answer choice]** to create a file share in Cluster1.

	▼
DFS Management	
Failover Cluster Manager	
File Server Resource Manager	
Server Manager	

- A. Mastered
- B. Not Mastered

Answer: A

Explanation:

Answer Area

You can perform Cluster-Aware Updating (CAU) in [answer choice].

▼

self-updating mode only

remote-updating mode only

remote-updating mode and self-updating mode

You can use [answer choice] to create a file share in Cluster1.

▼

DFS Management

Failover Cluster Manager

File Server Resource Manager

Server Manager

NEW QUESTION 82

DRAG DROP

Note: This question is part of a series of questions that use the same scenario. For your convenience, the scenario is repeated in each question. Each question presents a different goal and answer choices, but the text of the scenario is exactly the same in each question in this series.

Your network contains an Active Directory domain named contoso.com. The functional level of the forest and the domain is Windows Server 2008 R2. All servers in the domain run Windows Server 2016 Standard. The domain contains 300 client computers that run either Windows 8.1 or Windows 10.

The domain contains nine servers that are configured as shown in the following table.

Name	Configuration	Planned changes
Server1	Domain controller	None
Server2	File server	Run Failover Clustering and Storage Spaces Direct
Server3	File server	Run Failover Clustering and Storage Spaces Direct
Server4	Hyper-V host	Run shielded virtual machines
Server5	Hyper-V host	None
Server6	Member server	Run Active Directory Federation Services (AD FS)
VM1	Virtual machine hosted on Server5	None
VM2	Virtual machine hosted on Server5	None
VM3	Virtual machine hosted on Server5	None

The virtual machines are configured as follows:

- Each virtual machine has one virtual network adapter.
- VM1 and VM2 are part of a Network Load Balancing (NLB) cluster.
- All of the servers on the network can communicate with all of the virtual machines.

You need to install the correct edition of Windows Server 2016 to support the planned changes for Server2, Server3, Server4, and Server5.

Which edition or editions should you choose for each server? To answer, drag the appropriate editions to the correct servers. Each edition may be used once, more than once, or not at all. You may need to drag the split bar between panes or scroll to view content.

Editions

Standard only

Datacenter only

Standard or Datacenter

Answer Area

Server2: Edition

Server3: Edition

Server4: Edition

Server6: Edition

- A. Mastered
B. Not Mastered

Answer: A

Explanation:

Editions

Standard only

Datacenter only

Standard or Datacenter



Answer Area

Server2: Datacenter only

Server3: Datacenter only

Server4: Datacenter only

Server6: Standard or Datacenter

NEW QUESTION 84

Note This question is part of a series of questions that use the same scenario. For your convenience, the scenario is repeated in each question. Each question presents a different goal and answer choices, but the text of the scenario is exactly the same in each question in this series.

Start of Repeated Scenario:

Your network contains an Active Directory domain named contoso.com. The functional level of the forest and the domain is Windows Server 2008 R2. All servers in the domain run Windows Server 2016 Standard. The domain contains 300 client computers that run either Windows 8.1 or Windows 10.

The domain contains nine servers that are configured as shown in the following table.

Name	Configuration	Planned changes
Server1	Domain controller	None
Server2	File server	Run Failover Clustering and Storage Spaces Direct
Server3	File server	Run Failover Clustering and Storage Spaces Direct
Server4	Hyper-V host	Run shielded virtual machines
Server5	Hyper-V host	None
Server6	Member server	Run Active Directory Federation Services (AD FS)
VM1	Virtual machine hosted on Server5	None
VM2	Virtual machine hosted on Server5	None
VM3	Virtual machine hosted on Server5	None

The virtual machines are configured as follows:

- Each virtual machine has one virtual network adapter.
- VM1 and VM2 are part of a Network Load Balancing (NLB) cluster.
- All of the servers on the network can communicate with all of the virtual machines.

End of repeated Scenario.

On server4, you plan to provision a new volume that will be used to create large, fixed-size VHDX files.

Which type of file system should you use the new volume to minimize the amount of time required to create the VHDX files?

- A. ReFS
- B. NTFS
- C. CVFS
- D. exFAT

Answer: A

NEW QUESTION 88

Note This question is part of a series of questions that use the same scenario. For your convenience, the scenario is repeated in each question. Each question presents a different goal and answer choices, but the text of the scenario is exactly the same in each question in this series.

Start of Repeated Scenario:

Your network contains an Active Directory domain named contoso.com. The functional level of the forest and the domain is Windows Server 2008 R2. All servers in the domain run Windows Server 2016 Standard. The domain contains 300 client computers that run either Windows 8.1 or Windows 10.

The domain contains nine servers that are configured as shown in the following table.

Name	Configuration	Planned changes
Server1	Domain controller	<i>None</i>
Server2	File server	Run Failover Clustering and Storage Spaces Direct
Server3	File server	Run Failover Clustering and Storage Spaces Direct
Server4	Hyper-V host	Run shielded virtual machines
Server5	Hyper-V host	<i>None</i>
Server6	Member server	Run Active Directory Federation Services (AD FS)
VM1	Virtual machine hosted on Server5	<i>None</i>
VM2	Virtual machine hosted on Server5	<i>None</i>
VM3	Virtual machine hosted on Server5	<i>None</i>

The virtual machines are configured as follows:

- Each virtual machine has one virtual network adapter
- VM1 and VM2 are part of a Network Load Balancing (NLB) cluster.
- All of the servers on the network can communicate with all of the virtual machines. End of repeated Scenario.

You need to minimize the likelihood that a virtual machine running malicious code will consume excessive resources on Server5.

What should you do?

- Configure the virtual machines as shielded virtual machines.
- Run the Set-VMProcessor cmdlet and specify the –EnableHostResourceProtection Parameter.
- Run the Set-VMProcessor cmdlet and specify the –MaximumCountPerNumaNode Parameter.
- Configure VM Network Adapter Isolation.

Answer: B

NEW QUESTION 90

Note This question is part of a series of questions that use the same scenario. For your convenience, the scenario is repeated in each question. Each question presents a different goal and answer choices, but the text of the scenario is exactly the same in each question in this series.

Start of Repeated Scenario:

A company named Contoso, Ltd. has several servers that run Windows Server 2016. Contoso has a Hyper V environment that uses failover clustering and Windows Server Update Services (WSUS). The environment contains several Windows containers and several virtual machines.

The WSUS deployment contains one upstream server that is located on the company's perimeter network and several downstream servers located on the internal network. A firewall separates the upstream server from the downstream servers.

You plan to deploy a human resources application to a new server named HRServer5. HRServer5 contains a FAT32-formatted data volume.

The CIO of Contoso identifies the following requirements for the company's IT department:

- Deploy failover cluster to two new virtual machines.
 - Store all application databases by using Encrypted File System (EFS).
 - Ensure that each Windows container has a dedicated IP address assigned by a DHCP server
 - Produce a report that lists the processor time used by all of the processes on a server named Server 1 for five hours.
- Encrypt all communication between the internal network and the perimeter network, including all WSUS communications.
- Automatically load balance the virtual machines hosted in the Hyper-V cluster when processor utilization exceeds 70 percent.

End of Repeated Scenario.

You need to modify the Hyper V cluster to meet the load balancing requirement for the virtual machine. Which command should you run?

- (Get-ClusterParameter) AutoBalancerMode=2
- (Get-Cluster).AutoBalancerMode=2
- (Get-ClusterParameter).AutoBalancerLevel=2
- (Get-Cluster).AutoBalancerLevel=2

Answer: D

NEW QUESTION 92

DRAG DROP

Your network contains two Hyper-V servers named Server1 and Server2. Server1 has Windows Server 2012 R2 installed. Server2 has Windows Server 2016 installed.

You perform a live migration of a virtual machine named VM1 from Server1 to Server2. You need to create a production checkpoint for VM1 on Server2.

Which three Windows PowerShell cmdlets should you run in sequence? To answer, move the appropriate Windows PowerShell cmdlets from the list of actions to the answer area and arrange them in the correct order.

Cmdlets

Set-VM

Update-VMVersion

Checkpoint-VM

Set-VMHost

Stop-VM

Answer Area

⏪

⏩

⏴

⏵

- A. Mastered
- B. Not Mastered

Answer: A

Explanation:

Cmdlets

Set-VM

Update-VMVersion

Checkpoint-VM

Set-VMHost

Stop-VM

Answer Area

Stop-VM

Update-VMVersion

Checkpoint-VM

⏪

⏩

⏴

⏵

NEW QUESTION 97

Note: This question is part of a series of questions that present the same scenario. Each question in the series contains a unique solution that might meet the stated goals. Some question sets might have more than one correct solution, while others might not have a correct solution.

After you answer a question in this section, you will NOT be able to return to it. As a result, these questions will not appear in the review screen.

You have a server named Server1 that runs Windows Server 2016.

Server1 hosts a line-of-business application named App1. App1 has a memory leak that occasionally causes the application to consume an excessive amount of memory.

You need to log an event in the Application event log whenever App1 consumes more than 4 GB of memory.

Solution: You create a performance counter alert data collector. Does this meet the goal?

- A. Yes
- B. No

Answer: A

NEW QUESTION 100

After you answer a question in this section, you will NOT be able to return to it. As a result, these questions will not appear in the review screen.

You have a server named Server1 that runs Windows Server 2016.

You plan to use Windows Server Backup to back up all of the data on Server1. You create a new volume on Server1.

You need to ensure that the new volume can be used as a backup target. The backup target must support incremental backups.

Solution: You mount the volume to C:\Backup, and you format the volume by using FAT32. Does this meet the goal?

- A. Yes
- B. No

Answer: A

NEW QUESTION 105

After you answer a question in this section, you will NOT be able to return to it. As a result, these questions will not appear in the review screen.

You have a server named Server1 that runs Windows Server 2016.

You plan to use Windows Server Backup to back up all of the data on Server1. You create a new volume on Server1.

You need to ensure that the new volume can be used as a backup target. The backup target must support incremental backups.

Solution: You mount the volume to C:\Backup, and you format the volume by using NTFS. Does this meet the goal?

A. Yes

B. No

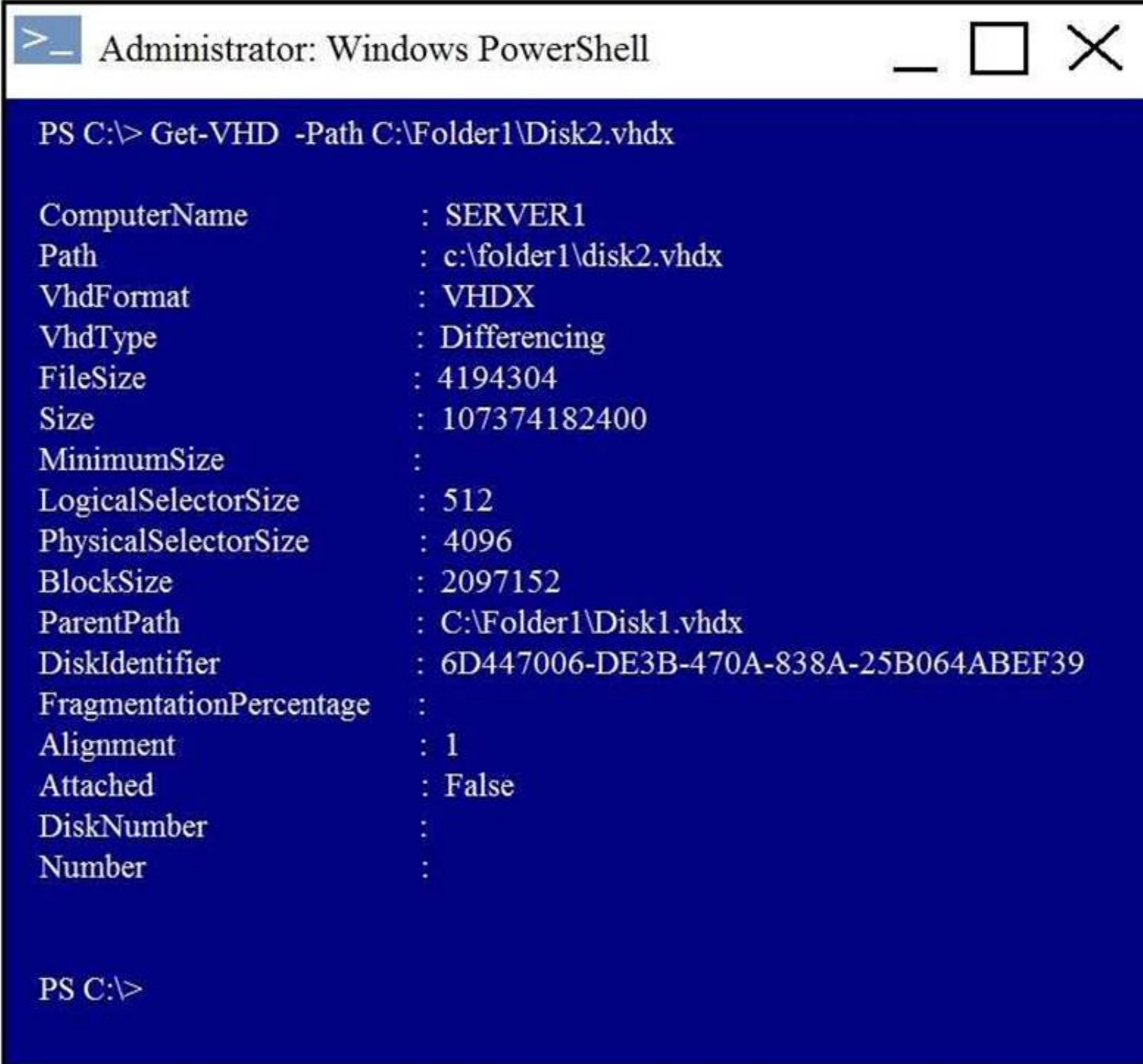
Answer: A

NEW QUESTION 109

HOTSPOT

You have a Hyper-V host named Server1 that runs Windows Server 2016. Server1 has a virtual disk file named Disk1.vhdx that contains an installation of Windows Server 2016.

You create a virtual disk file named Disk2.vhdx that is configured as shown in the following exhibit.



```
> Administrator: Windows PowerShell

PS C:\> Get-VHD -Path C:\Folder1\Disk2.vhdx

ComputerName      : SERVER1
Path              : c:\folder1\disk2.vhdx
VhdFormat         : VHDX
VhdType           : Differencing
FileSize          : 4194304
Size              : 107374182400
MinimumSize       :
LogicalSelectorSize : 512
PhysicalSelectorSize : 4096
BlockSize         : 2097152
ParentPath        : C:\Folder1\Disk1.vhdx
DiskIdentifier     : 6D447006-DE3B-470A-838A-25B064ABEF39
FragmentationPercentage :
Alignment         : 1
Attached          : False
DiskNumber        :
Number            :
```

Use the drop-down menus to select the answer choice that completes each statement based on the information presented in the graphic.

Answer Area

When you move Disk1.vhdx to C:\Folder2, you will be able to use Disk2.vhdx only after you run [answer choice].

▼
Merge-VHD
Optimize-VHD
Optimize-VHDSets
Set-VHD
Test-VHD

Before you can copy files directly into Disk2.vhdx, you must first run [answer choice].

▼
Merge-VHD
Mount-VHD
Optimize-VHD
Resize-VHD
Set-VHD

- A. Mastered
- B. Not Mastered

Answer: A

Explanation:

Answer Area

When you move Disk1.vhdx to C:\Folder2, you will be able to use Disk2.vhdx only after you run [answer choice].

▼
Merge-VHD
Optimize-VHD
Optimize-VHDSets
Set-VHD
Test-VHD

Before you can copy files directly into Disk2.vhdx, you must first run [answer choice].

▼
Merge-VHD
Mount-VHD
Optimize-VHD
Resize-VHD
Set-VHD

NEW QUESTION 110

You have a Nano Server that runs Windows Server 2016. The Nano Server runs on a physical machine. You have not installed any packages on the server. You attach a new disk to the server, and you initialize the disk as a GPT disk. You need to create an RefS-formatted volume on the new disk. What should you do first?

- A. From the physical server, log on to the Nano Server Recovery Console.
- B. Install the Microsoft-NanoServer-Host-Package package.
- C. Run the Format-Volume cmdlet and specify the -FileSystem switch.
- D. Install the Microsoft NanoServer-Storage-Package package.

Answer: C

NEW QUESTION 112

You have a server named Server1 that runs Windows Server 2016.
The disks on Server1 are configured as shown in the following table.

Volume	Type	File System	Capacity
C:	Attached locally	NTFS	150 GB
D:	Attached locally	exFAT	100 GB
E:	Attached locally	NTFS	20 GB
F:	Attached locally	ReFS	1 TB
G:	iSCSI LUN	NTFS	2 TB

Windows Server 2016 is installed in C:\Windows.

On which two volumes can you enable data deduplication? Each correct answer presents a complete solution.

- A. C:
- B. D:
- C. E:
- D. F:
- E. G:

Answer: CE

NEW QUESTION 114

You have two servers named Server1 and Server2 that run Windows Server 2016.

You plan to implement Storage Replica to replicate the contents of volumes on Server1 to Server2. You need to ensure that the replication traffic between the servers is limited to a maximum of 100 Mbps.

Which cmdlet should you run?

- A. New-NetQosPolicy
- B. Set-NetworkController
- C. New-NetTransportFilter
- D. New-StorageQosPolicy

Answer: A

Explanation:

References: [https://technet.microsoft.com/en-us/library/hh967471\(v=wps.630\).aspx](https://technet.microsoft.com/en-us/library/hh967471(v=wps.630).aspx)

NEW QUESTION 115

DRAG DROP

You have a Hyper-V host named Server1 that runs Windows Server 2016. Server 1 hosts a virtual machine named VM1 that runs Windows Server 2016. Server1 has a USB 3.0 device attached to a PCI Express (PCIe) bus.

You need to provide VM1 with pass-through access to the USB 3.0 device.

Which three actions should you perform in sequence? To answer, move the appropriate actions from the list of actions to the answer area and arrange them in the correct order.

Actions

Answer Area

- On Server1, run the **Dismount-VMHostAssignableDevice** cmdlet.
- On Server1, run the **Add-VMAssignableDevice** cmdlet
- On Server1, run the **Disable-PnPDevice** cmdlet
- On VM1, run the **Enable-PnPDevice** cmdlet
- On VM1, ran the **Mount-VMHostAssignable Device** cmdlet

1

2

3

- A. Mastered
- B. Not Mastered

Answer: A

Explanation:

Actions

On Server1, run the **Dismount-VMHostAssignableDevice** cmdlet.

On Server1, run the **Add-VMAssignableDevice** cmdlet

Answer Area

1

On VM1, ran the **Mount-VMHostAssignable Device** cmdlet

2

On VM1, run the **Enable-PnPDevice** cmdlet

3

On Server1, run the **Disable-PnPDevice** cmdlet

NEW QUESTION 119

DRAG DROP

You install a new Nano Server named Nano1. Nano1 is a member of a workgroup and has an IP address of 192.168.1.10.

You have a server named Server1 that runs Windows Server 2016.

From Server1, you need to establish a Windows PowerShell session to Nano1.

How should you complete the PowerShell script? To answer, drag the appropriate cmdlets to the correct targets. Each cmdlet may be used once, more than once, or not at all. You may need to drag the split bar between panes or scroll to view content.

Cmdlets

Enable-PSRemoting

Enter-PSSession

Set-Item

Set-ItemProperty

Set-LocalUser

Answer Area

\$ip = "192.168.1.10"

\$user = "Administrator"

Cmdlet WSMAN:\localhost\Client\TrustedHosts "192.168.1.10"

Cmdlet -ComputerName \$ip -Credential \$user

- A. Mastered
- B. Not Mastered

Answer: A

Explanation:

How to access Nano Server

Because Nano Server does not support a local session, it must be accessed remotely. References: [https://msdn.microsoft.com/en-us/library/mt708805\(v=vs.85\).aspx](https://msdn.microsoft.com/en-us/library/mt708805(v=vs.85).aspx)

NEW QUESTION 121

DRAG DROP

You are preparing an image of Windows Server 2016.

The image is missing the driver foe a network adapter that is required in your environment. You need to ensure that the image contains the network adapter driver.

Which three cmdlets should you use in sequence? To answer, move the appropriate cmdlets from the list of cmdlets to the answer area and arrange them m the correct order.

Cmdlets

Mount-WindowsImage

Add-WindowsDriver

Get-WindowsImage

Save-WindowsImage

Add-WindowsFeature

Dismount-WindowsImage

Optimize-WindowsImage

Answer Area

1

2

3

- A. Mastered
B. Not Mastered

Answer: A

Explanation:

Cmdlets

Mount-WindowsImage

Get-WindowsImage

Save-WindowsImage

Add-WindowsFeature

Answer Area

1

Add-WindowsDriver

2

Optimize-WindowsImage

3

Dismount-WindowsImage

NEW QUESTION 124

Your network contains an Active Directory domain. The domain contains two Hyper-V hosts. You plan to perform live migrations between the hosts. You need to ensure that the live migration traffic is authenticated by using Kerberos. What should you do first?

- A. From Server Manager, install the Host Guardian Service server role on a domain controller.
B. From Active Directory Users and Computers, add the computer accounts for both servers to the Cryptographic Operators group.
C. From Active Directory Users and Computers, modify the Delegation properties of the computer accounts for both servers.
D. From Server Manager, install the Host Guardian Service server role on both servers.

Answer: C

Explanation:

If you have decided to use Kerberos to authenticate live migration traffic, configure constrained delegation before you proceed to the rest of the steps.
 To configure constrained delegation

NEW QUESTION 125

HOTSPOT

You have a Hyper-V host named Server1 that runs Windows Server 2016.

You deploy a virtual machine named VM1 to Server1. VM1 runs Windows Server 2016. You need to ensure that you can install the Hyper-V server role on VM1.

Which command should you run? To answer, select the appropriate options in the answer area.

Answer Area

Enable-VMIntegrationService
 Set-VM
 Set-VMBios
 Set-VMFirmware
 Set-VMHost
 Set-VMProcessor

SERVER1 - EnableEnhancedSessionMode \$true
 SERVER1 - EnableSecureBoot on
 SERVER1 - ExposeVirtualizationExtensions \$true
 VM1 - EnableEnhancedSessionMode \$true
 VM1 - EnableSecureBoot on
 VM1 - ExposeVirtualizationExtensions \$true

- A. Mastered
- B. Not Mastered

Answer: A

Explanation:

References:

<https://docs.microsoft.com/en-us/virtualization/hyper-v-on-windows/user-guide/nested-virtualization>

NEW QUESTION 130

You need to implement network virtualization.

On which object should you configure the virtual subnet ID?

- A. Virtual switch
- B. Hyper-V server
- C. VM
- D. Virtual network adapter

Answer: A

NEW QUESTION 132

HOTSPOT

You have a server named Server1 that runs Windows Server 2016. Server1 is a Hyper-V host. You run the commands shown in the following graphic:



```

Windows PowerShell
Copyright (C) 2016 Microsoft Corporation. All rights reserved.

PS C:\Users\ServerAdmin> New-VmSwitch -Name TEAM1 -NetAdapterName "NIC 1", "NIC 2" -EnableEmbeddedTeaming $true
PS C:\Users\ServerAdmin> Set-VmSwitch -Name TEAM1 -NetAdapterName "NIC 1"
    
```

Use the drop-down menus to select the answer choice that completes each statement based on the information presented in the graphic.

Answer Area

After running the commands, TEAM1 contains [answer choice] network adapters.

	▼
one	
two	
three	

If you run **Add-VmSwitchTeamMember -VmSwitchName TEAM1 -NetAdapterName "NIC4"**, TEAM1 will contain [answer choice] network adapters.

	▼
one	
two	
three	
four	

- A. Mastered
- B. Not Mastered

Answer: A

Explanation:

Answer Area

After running the commands, TEAM1 contains [answer choice] network adapters.

	▼
one	
two	
three	

If you run **Add-VmSwitchTeamMember -VmSwitchName TEAM1 -NetAdapterName "NIC4"**, TEAM1 will contain [answer choice] network adapters.

	▼
one	
two	
three	
four	

NEW QUESTION 134

Note: This question is part of a series of questions that use the same or similar answer choices. An answer choice may be correct for more than one question in the series. Each question is independent of the other questions in this series. Information and details provided in a question apply only to that question. You have two servers named Server1 and Server2 that run Windows Server 2016. Server1 and Server2 have the Hyper-V server role installed.

An iSCSI SAN connects to the network.

You create a LUN on the SAN and configure both servers to connect to the iSCSI target.

You create a failover cluster and add Server1 and Server2 to the cluster. You connect both servers to the iSCSI target and format the shared storage.

You need to add the shared storage to the cluster. The solution must ensure that virtual machines running on both nodes can access the shared storage simultaneously.

Which tool should you use?

- A. the clussvc.exe command
- B. the cluster.exe command
- C. the Computer Management snap-in
- D. the configurehyperv.exe command
- E. the Disk Management snap-in
- F. the Failover Cluster Manager snap-in
- G. the Hyper-V Manager snap-in
- H. the Server Manager app

Answer: F

Explanation:

References:

[https://technet.microsoft.com/en-us/library/jj612868\(v=ws.11\).aspx](https://technet.microsoft.com/en-us/library/jj612868(v=ws.11).aspx)

NEW QUESTION 139

You create a Nano server image named Nano1.vhdx by using the New-NanoServerImage cmdlet. You attach Nano1.vhdx to a Generation 1 virtual machine named Nano1.

When you start Nano1, you get the following error message: "Boot failure. Reboot and select proper Boot device or Insert Boot Media in selected Boot device" You need to successfully start Nano server. What should you do?

- A. Attach Nano1.vhdx to a SCSIcontroller.
- B. Recreate Nano1 as a Generation 2 virtual machine.
- C. Increase the memory of Nano1 to 512 Mb.
- D. Modify the BIOS settings of Nano1.

Answer: B

Explanation:

A Generation 1 VM cannot boot from a vhdx disk; only a Generation 2 VM can boot from an vhdx disk.

NEW QUESTION 141

HOTSPOT

Your network contains an Active Directory forest named contoso.com. You need to add a new domain named fabrikam.com to the forest.

What command should you run? To answer, select the appropriate options in the answer area.

Answer Area

▼	-DomainType	▼
Install-ADDSDomain		TreeDomain
Install-ADDSDomainControler		ChildDomain
Install-ADDSTForest		

-InstallDns:Strue -NewDomainName fabrikam.com -ParentDomainName contoso.com

- A. Mastered
- B. Not Mastered

Answer: A

Explanation:

Answer Area

▼	-DomainType	▼
Install-ADDSDomain		TreeDomain
Install-ADDSDomainControler		ChildDomain
Install-ADDSTForest		

-InstallDns:Strue -NewDomainName fabrikam.com -ParentDomainName contoso.com

Explanation:

References:

[https://technet.microsoft.com/en-us/library/hh974722\(v=wps.630\).aspx](https://technet.microsoft.com/en-us/library/hh974722(v=wps.630).aspx)

NEW QUESTION 144

You have a Hyper-V host named Server1 that runs Windows Server 2016. The host has two virtual machines (VMs) named VM1 and VM2.

On the Hyper-V host, you create two virtual disks named Disk1 and Disk2. You plan to create a test environment for Storage Spaces Direct.

You need to configure the VMs to connect to the virtual disks. What should you use?

- A. An iSCSI target
- B. A virtual SCSI controller
- C. A virtual fibre channel adapter
- D. A virtual IDE controller

Answer: B

Explanation:

References:

<https://blogs.msdn.microsoft.com/clustering/2015/05/27/testing-storage-spaces-direct-using-windows-server-2016-virtual-machines/>

NEW QUESTION 147

Note: This question is part of a series of questions that present the same scenario. Each question in the series contains a unique solution that might meet the stated goals. Some question sets might have more than one correct solution, while others might not have a correct solution.

After your answer a question in this section, you will NOT be able to return to it. As a result, these questions will not appear in the review screen.

Your network contains an Active Directory forest named contoso.com. You need to identify which server is the schema master.

Solution: From a command prompt, you run netdom query fsmo. Does this meet the goal?

- A. Yes
- B. No

Answer: A

Explanation:

References: <https://blogs.technet.microsoft.com/mempson/2007/11/08/how-to-find-out-who-has-your-fsmo-roles/>

NEW QUESTION 152

Your Network contains one Active Directory domain named contoso.com. You pilot DirectAccess on the network.

During the pilot deployment, you enable DirectAccess only for a group Contoso\Test Computers. Once the pilot is complete, you need to enable DirectAccess for all the client computers in the domain.

What should you do?

- A. From Windows PowerShell, run the Set-DAClient cmdlet.
- B. From Windows PowerShell, run the Set-DirectAccess cmdlet.
- C. From Active Directory Users and Computers, modify the membership of the Windows Authorization Access Group.
- D. From Group Policy Management, modify the security filtering of an object named Direct Access Client Setting Group Policy.

Answer: D

NEW QUESTION 156

You have two servers named Server1 and Server2. A firewall exists between Server1 and Server2. Both servers run Windows Server Update Services (WSUS). Server1 downloads updates from Microsoft update.

Server2 must synchronize updates from Server1. Which port should to open on the firewall?

- A. 80
- B. 443
- C. 3389
- D. 8530

Answer: D

NEW QUESTION 157

Active Directory Recycle Bin is enabled. You discover that a support technician accidentally removed

100 users from an Active Directory group named Group1 an hour ago. You need to restore the membership of Group1.

What should you do?

- A. Perform tombstone reanimation.
- B. Export and import data by using Dsain.
- C. Perform a non-authoritative restore.
- D. Recover the items by using Active Directory Recycle Bin.

Answer: B

Explanation:

A group has been modified. Nothing has been deleted. Therefore, answers A and D will not work. Answer C would work if it was an authoritative restore, but not a non-authoritative restore.

The solution is to recover an earlier copy of the group from a backup or active directory snapshot by using DSadmain.

NEW QUESTION 160

DRAG DROP

You have a Hyper-V host named Server1 that runs Windows Server 2016.

The installation source files for Windows Server 2016 are located in D:\Source. You need to create a Nano Server image.

Which cmdlets should you run? To answer, drag the appropriate cmdlets to the correct targets. Each cmdlet may be used once, more than once, or not at all. You may need to drag the split bar between panes or scroll to view content.

Cmdlets

Add-WindowsImage

Import-Module

Install-Module

New-NanoServerImage

New-WindowsCustomImage



Answer Area

First cmdlet to run:

cmdlet

Second cmdlet to run:

cmdlet

- A. Mastered
- B. Not Mastered

Answer: A

Explanation:

Step 1: Import Module

Import-Module .\NanoServerImageGenerator.psm1 Step 2: New New-NanoServerImage

Create Nano Server Image VHDX

New-NanoServerImage -MediaPath .\Files -BasePath.\Base -TargetPath .\Images\NanoVMGA.vhdx References: <https://technet.microsoft.com/en-us/windows-server-docs/get-started/deploy-nano-server>

NEW QUESTION 165

DRAG DROP

Your network contains an Active Directory domain named contoso.com. The domain contains a server named Server1 that runs Windows Server 2016.

You install IP Address Management (IPAM) on Server1.

You need to manually start discovery of the servers that IPAM can manage in contoso.com.

Which three cmdlets should you run in sequence? To answer, move the appropriate cmdlets from the list of cmdlets to the answer area and arrange them in the correct order.

Cmdlets

Add-IpamAddress

Add-IpamDiscoveryDomain

Add-IpamSubnet

Update-IpamServer

Invoke-IpamServerProvisioning

Start-ScheduledTask

Answer Area



- A. Mastered
- B. Not Mastered

Answer: A

Explanation:

<https://technet.microsoft.com/itpro/powershell/windows/ipam/add-ipamdiscoverydomain> <https://technet.microsoft.com/itpro/powershell/windows/ipam/add-ipamserverinventory> <https://technet.microsoft.com/itpro/powershell/windows/ipam/invoke-ipamserverprovisioning>

NEW QUESTION 170

HOTSPOT

Your network contains an Active Directory domain named contoso.com. The domain contains three servers named Server1, Server2, and Server3 that run Windows Server 2016.

Server1 has IP Address Management (IPAM) installed. Server2 and Server3 have the DHCP Server role installed and have several DHCP scopes configured. The IPAM server retrieves data from Server2 and Server3.

A domain user named User1 is a member of the groups shown in the following table.

Server name	Group
Server2	DHCP Administrators
Server3	DHCP Users

On Server1, you create a security policy for User1. The policy grants the IPAM DHCP Scope Administrator Role with the \Global access scope to the user. Which actions can User1 perform? To answer, select the appropriate options in the answer area.

Answer Area

From Server Manager on Server1, User1 can modify the description of the DHCP scopes:

On Server2 only

On Server3 only

On both Server2 and Server3

From Server Manager on Server1, User1 can create a new DHCP scope:

On Server2 only

On Server3 only

On both Server2 and Server3

- A. Mastered
- B. Not Mastered

Answer: A

Explanation:

[https://technet.microsoft.com/en-us/library/dn268500\(v=ws.11\).aspx](https://technet.microsoft.com/en-us/library/dn268500(v=ws.11).aspx)

NEW QUESTION 172

You have two servers named Server1 and Server2 that run Windows Server 2016.

You plan to implement Storage Replica to replicate the contents of volumes on Server1 to Server2. You need to ensure that the replication traffic between the servers is limited to a maximum of 100 Mbps.

Which cmdlet should you run?

- A. Set-NetUDPSetting
- B. New-StorageQosPolicy
- C. Set-SmbBandwidthLimit
- D. Set-NetTCPSetting

Answer: C

NEW QUESTION 174

A company named Contoso, Ltd has five Hyper-V hosts that are configured as shown in the following table.

Hyper-V host name	Configuration
Server1	Windows Sever 2012 R2 and an Intel Xeon E7 processor
Server2	Windows Sever 2012 R2 and an Intel i7 processor
Server3	Windows Sever 2016 and an Intel i7 processor
Server4	Windows Sever 2016 and an AMD Opteron processor
Server5	Windows Sever 2012 R2 and an Intel Xeon E7 processor

What are two valid live migration scenarios for virtual machines in your environment? Each correct answer presents a complete solution.

- A. from Server4 to Server5
- B. from Server1 to Server5
- C. from Server3 to Server4
- D. from Server2 to Server3

Answer: BD

NEW QUESTION 179

You have a Hyper-V host named Server1 that runs Windows Server 2016. Server1 hosts a virtual machine named VM1. VM1 is in a workgroup. VM1 is currently in a running state.

You need to create 10 copies of VM1 on Server1 in the least amount of time possible. Which cmdlets should you use?

- A. Stop-VM, and then Import-VM
- B. Export-VM, and then Import-VM
- C. Checkpoint-VM, and then New-VM
- D. Copy-VMFile, and then New-VM

Answer: B

NEW QUESTION 180

Note: This question is part of a series of questions that use the same scenario. For your convenience, the scenario is repeated in each question. Each question presents a different goal and answer choices, but the text of the scenario is exactly the same in each question in this series.

Start of repeated scenario

Your network contains an Active Directory domain named contoso.com. The functional level of the forest and the domain is Windows Server 2008 R2. All servers in the domain run Windows Server 2016 Standard. The domain contains 300 client computers that run either Windows 8.1 or Windows 10.

The domain contains nine servers that are configured as shown in the following table.

Server name	Configuration	Planned changes
Server1	Domain controller	None
Server2	File server	Run Failover Clustering and Storage Spaces Direct
Server3	File server	Run Failover Clustering and Storage Spaces Direct
Server4	Hyper-V host	Run shielded virtual machines
Server5	Hyper-V host	None
Server6	Member server	Run Active Directory Federation Services (AD FS)
VM1	Virtual machine hosted on Server 5	None
VM2	Virtual machine hosted on Server 5	None
VM3	Virtual machine hosted on Server 5	None

The virtual machines are configured as follows:

Each virtual machine has one virtual network adapter.

VM1 and VM2 are part of a Network Load Balancing (NLB) cluster.

All of the servers on the network can communicate with all of the virtual machines. End of repeated scenario.

You plan to implement nested virtual machines on VM1.

Which two features will you be prevented from using for VM1?

- A. NUMA spanning
- B. live migration
- C. Dynamic Memory
- D. Smart Pathing

Answer: BC

Explanation:

References:

<https://blogs.technet.microsoft.com/virtualization/2015/10/13/windows-insider-preview-nested-virtualization/>

NEW QUESTION 183

DRAG DROP

You have a server named Server1 that runs Windows Server 2016.

On Server1 you use the Basic template to create a new Data Collector Set named CollectorSet1.

You need to configure data collection for the performance counters. The configuration must support the following requirements:

Data collection must run on a schedule.

Data collection must stop if there is less than 1 GB of free disk space.

What should you modify to meet each requirement? To answer, drag the appropriate settings to the correct requirements. Each setting may be used once, more than once, or not at all. You may need to drag the Split bar between panes or scroll to view content.

Settings to Modify

The Data Manager settings of CollectorSet1

The properties of the performance counter data collector

The properties of CollectorSet1

Answer Area

Data collection must run on a schedule:

Setting to modify

Data collection must stop if there is less than 1 GB of free disk space:

Setting to modify

- A. Mastered
- B. Not Mastered

Answer: A

Explanation:

Settings to Modify

The Data Manager settings of CollectorSet1

Data collection must run on a schedule:

The properties of CollectorSet1

Data collection must stop if there is less than 1 GB of free disk space:

The properties of the performance counter data collector

NEW QUESTION 188

HOTSPOT

You have four Hyper-V hosts named Server1, Server2, Server3 and Server4 that run Windows Server 2016. The hosts are nodes in a failover cluster. The failover cluster is configured to balance virtual machines when a node is more than 80 percent loaded. You need to configure the failover cluster to balance the virtual machines when the load of a node is more than five percent higher than the average for the nodes. Which command should you run? To answer, select the appropriate options in the answer area.

Answer Area

▼

Get-Cluster
Get-ClusterNode
Get-ClusterParameter
Get-ClusterResource

▼

AutoBalanceLevel=3
AutoBalancedMode=1
DynamicQuorum=1
MininumPreemptorPriority=5

- A. Mastered
- B. Not Mastered

Answer: A

Explanation:

Answer Area

▼

Get-Cluster

Get-ClusterNode

Get-ClusterParameter

Get-ClusterResource

▼

AutoBalanceLevel=3

AutoBalancedMode=1

DynamicQuorum=1

MininumPreemptorPriority=5

NEW QUESTION 190

One of your team previously opened Hyper-V Manager, selected a virtual machine and followed the Enable Replication wizard.
 The process was completed successfully and replications were occurring as expected.
 Several weeks later and you now want to run a planned failover. Which of the following steps is the correct starting point?

- A. Right-click the primary VM and select Replication > Planned Failover
- B. Right-click the replica VM and select Replication > Planned Failover
- C. Right-click the primary VM and select Replication > Extend Replication
- D. Right-click the replica VM and select Replication > Test Failover

Answer: A

NEW QUESTION 195

Nano Server is foundational to the modern datacenter and is useful in two core scenarios: As a private cloud infrastructure it's particularly useful for clustered Hyper-V, clustered storage and core networking services scenarios; or as an application platform it's highly optimized for modern distributed and cloud-based apps which leverage containers and micro service architectures.
 Is the following statement TRUE or FALSE?
 A local interface with UI support is available for offline management of Nano Servers?

- A. TRUE
- B. FALSE

Answer: B

Explanation:

A local interface with UI support is NOT available for Nano servers. You must administer them remotely using PowerShell.

NEW QUESTION 199

When you create a new SET team, you must configure the following team properties: Member adapters and Load balancing mode.
 Which Load balancing mode ensures that outbound loads are distributed based on a hash of the TCP Ports and IP addresses.
 This mode also re-balances loads in real time so that a given outbound flow can move back and forth between SET team members.

- A. Dynamic
- B. Hyper-V Port

Answer: A

NEW QUESTION 200

For Windows Server 2016, Nano Server is distributed on the physical media, where you will find a NanoServer folder; this contains a .wim image and a subfolder called Packages. It is these package files that you use to add server roles and features to the VHD image, which you then boot to.
 Assume that several variables have been configured already, which PowerShell command would you use to create a Nano Server which had the Hyper-V role, clustering, OEM Drivers and antimalware?

- A. New-NanoServerImage -MediaPath \$mediapath -BasePath \$basepath -TargetPath \$targetpath - ComputerName \$computername -OEMDrivers -Clustering -Defender -Compute
- B. New-NanoServerImage -MediaPath \$mediapath -BasePath \$basepath -TargetPath \$targetpath - ComputerName \$computername -OEMDrivers -Clustering -Storage -EnableRemoteManagementPort
- C. New-NanoServerImage -MediaPath \$mediapath -BasePath \$basepath -TargetPath \$targetpath - ComputerName \$computername -OEMDrivers -Defender -Containers - EnableRemoteManagementPort
- D. New-NanoServerImage -MediaPath \$mediapath -BasePath \$basepath -TargetPath \$targetpath - ComputerName \$computername -Defender -Storage -Compute - EnableRemoteManagementPort

Answer: A

NEW QUESTION 205

You have two servers that run Windows Server 2016. The servers are configured as shown in the following table.

Server name	Workgroup	DNS suffix
Server1	Workgroup1	<i>None</i>
Server2	Workgroup2	Contoso.com

You need to create a failover cluster that contains both servers.

Which two commands should you run? Each correct answer presents part of the solution. NOTE: Each correct selection is worth one point.

- A. wmic ComputerSystem Set Workgroup= "Workgroup2"
- B. New-Cluster-Name Cluster1- Node Server1, Server2- AdministrativeAccessPoint DNS
- C. New-Cluster-Name Cluster1- Node Server1, Server2- AdministrativeAccessPoint ActiveDirectoryAndDns
- D. New-Cluster-Name Cluster1- Node Server1, Server2- AdministrativeAccessPoint None
- E. netdom computername Server1/MakePrimary:server1.contoso.com

Answer: AB

NEW QUESTION 206

You have a server named Server1 that runs Windows Server 2016. Server1 has the Containers feature installed.

You create a text file that contains the commands that will be used to automate the creation of new containers.

You need to ensure that the commands in the text file are used when you create new containers. What should you name the file?

- A. Bootstrap.ini
- B. Config.ini
- C. Dockerfile
- D. Unattend.txt

Answer: C

NEW QUESTION 209

You create a Storage Spaces Direct hyper-converged failover cluster. The cluster contains three nodes and a 1-TB Storage Spaces Direct volume.

The cluster will store virtual machines.

You plan to extend the volume by adding an additional 3 TB.

What is the minimum amount of extra disk capacity required to accommodate extending the volume?

- A. 3TB on the coordinator node
- B. 3 TB per node
- C. 4 TB per node
- D. 4 TB on the coordinator node

Answer: B

Explanation:

References:

<https://docs.microsoft.com/en-us/windows-server/storage/storage-spaces/drive-symmetry-considerations>

NEW QUESTION 214

You have a Windows Server 2016 failover cluster that contains two servers named Server1 and Server2.

The Cluster Service on Server1 fails.

You need to identify the cause of the failure. What should you do?

- A. From Windows PowerShell, run the Get-ClusterNode cmdlet.
- B. From Event Viewer, review the Application event log.
- C. From Windows PowerShell, run the Get-ClusterLog cmdlet.
- D. From Event Viewer, review the System event log.

Answer: C

Explanation:

References: <https://blogs.msdn.microsoft.com/clustering/2015/05/14/windows-server-2016-failover-cluster-troubleshooting-enhancements-cluster-log/>

NEW QUESTION 219

You have a server named Server1 that runs Windows Server 2016. Server1 is a member of contoso.com. Server1 has the Hyper-V role installed. Virtual machines on Server1 are connected to an external switch named Switch1.

You create a virtual machine named VM1 on Server1 by running the following cmdlets.

```
Add-VM VM1
Add-VMHardDiskDrive -VMName VM1 -ControllerType IDE -Path c:\VMs\Disk1.vhd
Add-VMNetworkAdapter -VMName VM1
```

You need to ensure that you can install the operating system on VM1 by using Windows Deployment Services.

What should you do?

- A. Modify the SwitchType parameter of Switch1.
- B. Modify the DefaultFlowMinimumBandwidthWeight parameter of Switch1.
- C. Add a SCSI controller to VM1.

D. Add a legacy network adapter to VM1.

Answer: D

NEW QUESTION 220

You have two Hyper-V hosts named Server1 and Server2 that run Windows Server 2016. The hosts are nodes in failover cluster. You have a virtual machine named VM1. VM1 connects to a virtual switch named vSwitch1. You discover that VM1 automatically live migrates when vSwitch temporarily disconnects. You need to prevent VM1 from being live migrated when vSwitch1 temporarily disconnects. What should you do?

- A. Run the Set-VMNetworkAdapter cmdlet and set StormLimit to 0.
- B. From the network adapter setting of VM1, disable the Heartbeat integration service.
- C. Run the Set-VMNetworkAdapter cmdlet and set IsManagementOS to False.
- D. From the network adapter setting of VM1, disable the Protected network setting.

Answer: D

NEW QUESTION 221

DRAG DROP

You have a server named Server1 that runs Windows Server 2016. On Server1, you create a Nano Server image named Disk1.vhdx. You need to start Server1 by using Disk1.vhdx.

Which three actions should you perform in sequence? To answer, move the appropriate actions from the list of actions to the answer area and arrange them in the correct order.

Actions

Restart Server1.

Run the bcdboot.exe command.

Run the bootcfg.exe command.

Run the **Edit-NanoServerImage** cmdlet.

Mark a partition as active.

Mount Disk1.vhdx.

Answer Area



- A. Mastered
- B. Not Mastered

Answer: A

Explanation:

Actions

Restart Server1.

Run the bcdboot.exe command.

Run the bootcfg.exe command.

Run the Edit-NanoServerImage cmdlet.

Mark a partition as active.

Mount Disk1.vhdx.

Answer Area

Mount Disk1.vhdx.

Run the bootcfg.exe command.

Restart Server1.



NEW QUESTION 223

You have a Windows Server 2016 failover cluster named Cluster1 that contains three nodes named Server1, Server2, and Server3. Each node hosts several virtual machines. The virtual machines are configured to fail over to another node in Cluster1 if the hosting node fails. You need to ensure that if the Cluster service fails on one of the nodes, the virtual machine of that node will fail over immediately. Which setting should you configure?

- A. FailureConditionLevel
- B. QuarantineDuration
- C. ResiliencyPeriod
- D. ResiliencyLevel

Answer: D

Explanation:

References:

<https://blogs.msdn.microsoft.com/clustering/2015/06/03/virtual-machine-compute-resiliency-in-windows-server-2016/>

NEW QUESTION 224

HOTSPOT

You have a Windows Server 2016 failover cluster that has a cluster network named ClusterNetwork1. You need to ensure that ClusterNetwork1 is enabled for cluster communication only.

What command should you run? To answer, select the appropriate options in the answer area.

Answer Area

(Get-ClusterNetwork ClusterNetwork1) . ID =1

Get-ClusterResource

Set-ClusterParameter

Update-ClusterIPResource

Metric

Role

State

- A. Mastered
- B. Not Mastered

Answer: A

Explanation:

Answer Area

(▼ ClusterNetwork1) . ▼ =1

Get-ClusterNetwork
Get-ClusterResource
Set-ClusterParameter
Update-ClusterIPResource

ID
Metric
Role
State

NEW QUESTION 229

You have a server named Server1 that runs Windows Server 2016. The Docker daemon runs on Server1. You need to ensure that members of a security group named Docker Administrators can administer Docker. What should you do?

- A. Run the sc privsc ommand.
- B. Edit the Daemon.json file.
- C. Add Docker Administrators to the local Administrators group.
- D. Edit the Configuration.json file.

Answer: C

NEW QUESTION 232

HOTSPOT

Note: This question is part of a series of questions that use the same scenario. For your convenience, the scenario is repeated in each question. Each question presents a different goal and answer choices, but the text of the scenario is exactly the same in each question in this series.

Your network contains an Active Directory domain named contoso.com. The functional level of the forest and the domain is Windows Server 2008 R2. All servers in the domain run Windows Server 2016 Standard. The domain contains 300 client computers that run either Windows 8.1 or Windows 10.

The domain contains nine servers that are configured as shown in the following table.

Name	Configuration	Planned changes
Server1	Domain controller	None
Server2	File server	Run Failover Clustering and Storage Spaces Direct
Server3	File server	Run Failover Clustering and Storage Spaces Direct
Server4	Hyper-V host	Run shielded virtual machines
Server5	Hyper-V host	None
Server6	Member server	Run Active Directory Federation Services (AD FS)
VM1	Virtual machine hosted on Server5	None
VM2	Virtual machine hosted on Server5	None
VM3	Virtual machine hosted on Server5	None

The virtual machines are configured as follows:

Each virtual machine has one virtual network adapter.

VM1 and VM2 are part of a Network Load Balancing (NLB) cluster.

All of the servers on the network can communicate with all of the virtual machines. For VM1 and VM2, you plan to use live migration between Server4 and Server5.

You need to ensure that when the virtual machines migrate, they maintain connectivity to the network.

Which virtual switch names and connection types should you use on each server? To answer, select the appropriate options in the answer area.

Answer Area

Virtual switch connection type on Server4:

▼
External network
Internal network
Private network

Virtual switch connection type on Server5:

▼
External network
Internal network
Private network

Virtual switch name on Server4:

▼
External on Server4
Network switch
Server4

Virtual switch name on Server5:

▼
External on Server5
Network switch
Server5

- A. Mastered
- B. Not Mastered

Answer: A

Explanation:

Answer Area

Virtual switch connection type on Server4:

▼
External network
Internal network
Private network

Virtual switch connection type on Server5:

▼
External network
Internal network
Private network

Virtual switch name on Server4:

▼
External on Server4
Network switch
Server4

Virtual switch name on Server5:

▼
External on Server5
Network switch
Server5

Note: This question is part of a series of questions that present the same scenario. Each question in the series contains a unique solution that might meet the stated goals. Some question sets might have more than one correct solution, while others might not have a correct solution.
After you answer a question in this section, you will NOT be able to return to it. As a result, these questions will not appear in the review screen.
You network contains an Active Directory domain named contoso.com.
You need to create a Nano Server image named Nano1 that will be used as a virtualization host. The Windows Server 2016 source files are located in drive D.
Solution: You run the following cmdlet.
New-NanoServerImage -Edition Datacenter -DeploymentType Host -Package Microsoft-NanoServer-Compute-Package -MediaPath 'D:\' -TargetPath C:\Nano1\Nano1.wim -ComputerName Nano1 -DomainName Contoso.com
Does this meet the goal?

- A. Yes
- B. No

Answer: A

NEW QUESTION 240

Note: This question is part of a series of questions that present the same scenario. Each question in the series contains a unique solution that might meet the stated goals. Some question sets might have more than one correct solution, while others might not have a correct solution.
After you answer a question in this section, you will NOT be able to return to it. As a result, these questions will not appear in the review screen.
You network contains an Active Directory domain named contoso.com.
You need to create a Nano Server image named Nano1 that will be used as a virtualization host. The Windows Server 2016 source files are located in drive D.
Solution: You run the following cmdlet.

```
New-NanoServerImage -Edition Datacenter -DeploymentType Host -Package  
Microsoft-NanoServer-SCVMM-Package -MediaPath 'D:\' -TargetPath  
C:\Nano1\Nano1.wim -ComputerName Nano1 -DomainName Contoso.com
```

Does this meet the goal?

- A. Yes
- B. No

Answer: B

NEW QUESTION 245

Note: This question is part of a series of questions that present the same scenario. Each question in the series contains a unique solution that might meet the stated goals. Some question sets might have more than one correct solution, while others might not have a correct solution.
After you answer a question in this section, you will NOT be able to return to it. As a result, these questions will not appear in the review screen.
You have a server named Server1 that runs Windows Server 2016.
Server1 hosts a line-of-business application named App1. App1 has a memory leak that occasionally causes the application to consume an excessive amount of memory.
You need to log an event in the Application event log whenever App1 consumes more than 4 GB of memory.
Solution: You create an event trace data collector. Does this meet the goal?

- A. Yes
- B. No

Answer: B

NEW QUESTION 247

Note: This question is part of a series of questions that present the same scenario. Each question in the series contains a unique solution that might meet the stated goals. Some question sets might have more than one correct solution, while others might not have a correct solution.
After you answer a question in this section, you will NOT be able to return to it. As a result, these questions will not appear in the review screen.
After you answer a question in this section, you will NOT be able to return to it. As a result, these questions will not appear in the review screen.
Your network contains an Active Directory domain. The domain contains a new file server named Server1 that runs a Server Core installation of Windows Server 2016.
Server1 has an ReFS-formatted volume D: and an NTFS-formatted volume E:. the- volumes do not contain any data.
You Install the Data Deduplication role service on Server1.
You need to implement Data Deduplication for volumes on D: and E:.
Solution; From Windows PowerShell, you run Format-Volume D: -FileSystem NTFS and Enable- DeDupVolume-Volume D:,E:.
Does this meet the goal?

- A. Yes
- B. No

Answer: A

NEW QUESTION 249

Note: This question is part of a Series of questions that use the same or similar answer choices. An answer choice may be correct for more than one question in the series. Each question is Independent of the other questions in this series. Information and details provided in a question apply only to that question.
You have two servers named Server1 and Server2 that run Windows Server 2016. Server1 and server2 have the Hyper-V server role installed and are nodes in a failover Cluster.
On Server1, an administrator creates a virtual machine named VM1. You need to configure VM1 for high availability.
Which tool should you use?

- A. the clussvc.exe command
- B. the cluster.exe command
- C. the Computer Management snap in
- D. the configurehyperv.exe command
- E. the Disk Management map-in
- F. the Failover Cluster Manager snap In
- G. the Hyper V Manage map id
- H. the Server Manager app

Answer: F

NEW QUESTION 250

Your network contains an Active Directory domain named contoso.com. All servers run Windows Server 2016. As a domain administrator, you log on to a server named Server2 and open Windows Power Shell. You need to establish an interactive Power Shell session to a server named Server 1- Which command should you run?

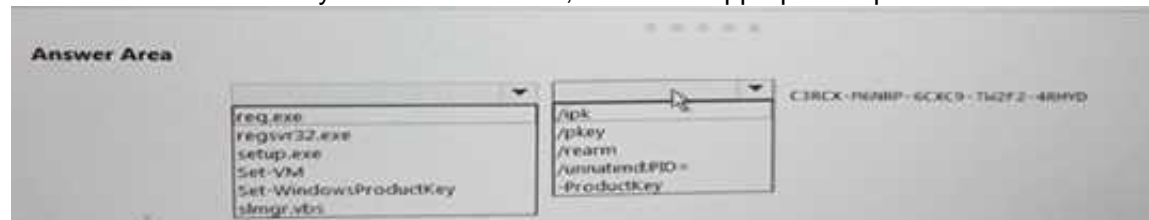
- A. Enable-PSRemoting Server 1
- B. Enter-PSSession -ComputerName Server
- C. New-PSSession -Name Server
- D. Set-PSSession Configuration -AccessMode Remote -Name Server

Answer: B

NEW QUESTION 252

HOTSPOT

You have a Hyper-V host named Server1 that runs Windows Server 2016 Datacenter. Server1 is activated. On Server 1. you deploy a virtual machine named VM1 that has a Server Core installahon of Windows Server 2016 Standard. You need to activate VMI try using Automatic Virtual Machine- Activation (AVMA). Which command should you run? To answer, select the appropriate options in the answer area. NOTE: Each correct selection is worth one point.



- A. Mastered
- B. Not Mastered

Answer: A

Explanation:



NEW QUESTION 256

Your network contains three Hyper-V hosts. You add all of the hosts to a cluster. You need to create highly available storage spaces that connect to directly attached storage on the hosts. Which cmdlet should you use?

- A. Enable-CluslerStorageSpacesDirct
- B. Update-CluslerVirtualMachineConfiguration
- C. Add-CluslerDisk
- D. Set-Storage Pool

Answer: A

NEW QUESTION 258

You have a Windows Server 2016 failover cluster named Ousted that contains three nodes named Server 1, Server 2, and Server 3. Each node hosts several virtual machines. the virtual machines are configured to fail over to another node in Ousted if the hosting node tails. You need to ensure that it if the Cluster service tails on one of the nodes, the virtual machine of that node will fail over immediately. Which setting should you configure?

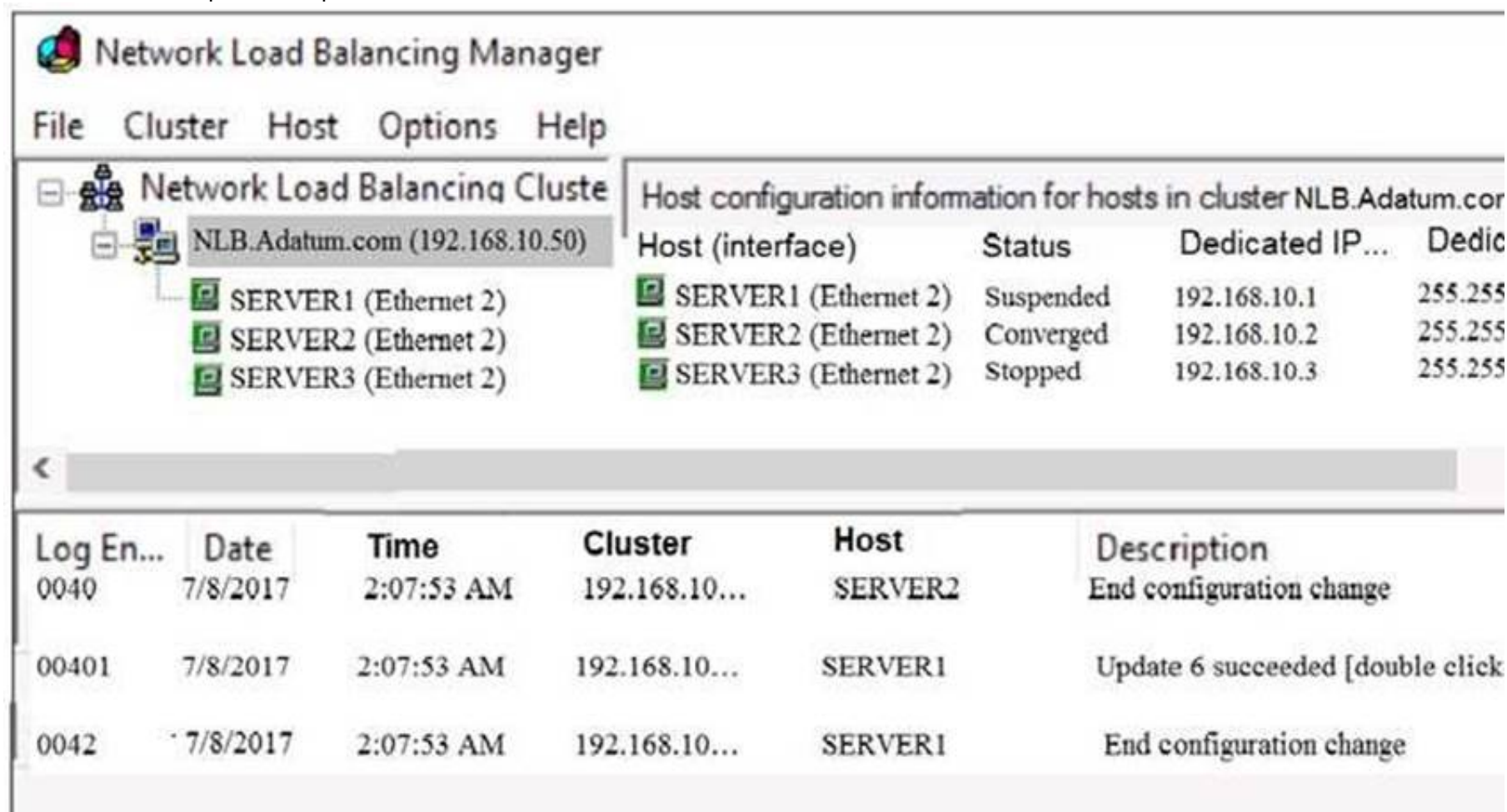
- A. failureConditionLevel
- B. QuarantineDuration
- C. Resiliency Period
- D. ResiliencyLevel

Answer: B

NEW QUESTION 259

Your network contains an Active Directory domain named adatum.com. The domain contains a Network Load Balancing (NLB) cluster as shown in the exhibit. (Click the Exhibit button.)

Which hosts will respond to requests sent to nlb.adatum.com?



Network Load Balancing Manager

File Cluster Host Options Help

Network Load Balancing Cluster

NLB.Adatum.com (192.168.10.50)

Host configuration information for hosts in cluster NLB.Adatum.com

Host (interface)	Status	Dedicated IP...	Dedic
SERVER1 (Ethernet 2)	Suspended	192.168.10.1	255.255
SERVER2 (Ethernet 2)	Converged	192.168.10.2	255.255
SERVER3 (Ethernet 2)	Stopped	192.168.10.3	255.255

Log En...	Date	Time	Cluster	Host	Description
0040	7/8/2017	2:07:53 AM	192.168.10...	SERVER2	End configuration change
00401	7/8/2017	2:07:53 AM	192.168.10...	SERVER1	Update 6 succeeded [double click
0042	7/8/2017	2:07:53 AM	192.168.10...	SERVER1	End configuration change

- A. Server1 only
- B. Server2 only
- C. Server1 and Server2 only
- D. Server1, Server2

Answer: B

NEW QUESTION 260

HOTSPOT

You deploy a new Hyper-V host named Server1 that runs Windows Server 2016. You implement receive side scaling (RSS) on Server1.

The chipset on Server1 does not support NetDMA.

All of the equipment on your network supports 10-Gbps connectivity. On Server1, you deploy a virtual machine named VM1.

You configure VM1 to aggregate all of the Windows and non-Windows log files for all of the servers on the network.

VM1 has four virtual processors.

You discover that VM1 drops packets.

Which two options should you run? To answer, select the appropriate options in the answer area.

Answer Area

First action:

▼

Enable TCP Chimney Offload on Server1.

Enable single root I/O virtualization (SR-IOV) on VM1.

Enable virtual machine queue (VMQ) on Server1 and VM1.

Second action:

▼

Enable virtual TCP Chimney Offload on VM1.

Enable virtual Receive-side Scalling (vRSS) on VM1.

Enable single root I/O virtualization (SR-IOV) on Server1.

- A. Mastered
- B. Not Mastered

Answer: A

Explanation:

Answer Area

First action:

▼
Enable TCP Chimney Offload on Server1.
Enable single root I/O virtualization (SR-IOV) on VM1.
Enable virtual machine queue (VMQ) on Server1 and VM1.

Second action:

▼
Enable virtual TCP Chimney Offload on VM1.
Enable virtual Receive-side Scalling (vRSS) on VM1.
Enable single root I/O virtualization (SR-IOV) on Server1.

NEW QUESTION 265

You have a Windows Server 2016 failover cluster 1 that contains four nodes named Server1, Server2, Server3, Server4, Cluster1 hosts 40 virtual machines that are distributed evenly across the nodes. Server1 and Server2 are located in a data center in Madrid. Server3 and Server4 are located in a data center in Barcelona.

You need to ensure that when you pause a node in the other data center.

Which two actions should you perform? Each correct answer present part of the solution.

- A. Run the New-Cluster Fault Domain cmdlet.
- B. Run the Add-Cluster Group cmdlet.
- C. Configure a file share witness for each data center.
- D. Run the Set-Cluster Fault Domain cmdlet.
- E. Create an Active Directory site for each data center.
- F. Change the quorum configuration of the cluster to Node Majority.

Answer: BD

NEW QUESTION 266

You have a server named Server1 that runs Windows Server 2016.

Server1 has four SCSI disks and a storage pool named Pool1 that contains three disks. You create a virtual disk named Disk 1 that uses a mirrored layout.

You create a partition named Partition1 that uses all of the available space on Disk 1. You need to extend Partition1.

What should you do first?

- A. From Windows PowerShell, run the Resize-Partition cmdlet.
- B. From Disk Management, modify the properties of Partition1.
- C. From the Storage Pools page in Server Manager, extend a virtual disk.
- D. From Disk Management, extend a volume.

Answer: C

Explanation:

References: <https://charbelnemnom.com/2015/03/step-by-step-how-to-extend-and-resize-a-two-way-mirrored-storage-tiered-space-storagespaces-ws2012r2/>

NEW QUESTION 270

HOTSPOT

You have a Windows Server 2016 failover cluster named Cluster1. You need to implement Cloud Witness for Cluster 1.

What should you do? To answer, select the appropriate options in the answer area. NOTE: Each correct selection is worth one point.

Answer Area

In Microsoft Azure, create:

An availability set
An integration account
A public IP address
A Recovery Services vault
A storage account

On Cluster1, run:

Add-ClusterResource
Add-ClusterResourceType
Set-ClusterParameter
Set-ClusterQuorum

- A. Mastered
- B. Not Mastered

Answer: A

Explanation:

References:

<https://www.vembu.com/blog/deploying-a-azure-cloud-witness-for-a-failover-cluster-in-windows-server-2016/>
<https://docs.microsoft.com/en-us/powershell/module/failoverclusters/set-clusterquorum?view=win10-ps>

NEW QUESTION 271

You have a server named Server1 that runs Windows Server 2016.

The server has an application named App1. App1 writes entries to the Application event log when errors are encountered. The events have IDs of either 111 or 112.

You need to restart the service whenever either of these events is logged. What should you do?

- A. From Windows PowerShell, run the Write-EventLog cmdlet and specify the-EventID parameter and the -Source parameter.
- B. From Event Viewer, create a custom view that has a filter for the event IDs.
- C. From Event Viewer, create a subscription that has a filter for the event IDs.
- D. From Task Scheduler, use Create Task to create one task that includes triggers for both event IDs.
- E. From Windows PowerShell, run the Get-SMSEvent cmdlet and pipe the output to the Start-NetEventSession cmdlet.
- F. From Performance Monitor, add an Event Trace Session data collector that uses the Microsoft-Windows-Eventlog provider.

Answer: D

NEW QUESTION 272

HOTSPOT

You have a server named Server1 that runs Windows Server 2016.

On Server1, you plan to create a new volume named Volume1. Volume1 will contain image files.

You need to identify which file system and which cluster size to configure for Volume1. The solution must ensure that the image files will be compressed by using file system compression.

Which file system and cluster size should you identify? To answer, select the appropriate options in the answer area.

NOTE: Each correct selection is worth one point.

Answer Area

File system:

▼
exFAT
FAT32
NTFS
ReFS

Cluster size:

▼
4K
8K
64K

- A. Mastered
- B. Not Mastered

Answer: A

Explanation:

Answer Area

File system:

▼
exFAT
FAT32
NTFS
ReFS

Cluster size:

▼
4K
8K
64K

NEW QUESTION 277

You have a file server named Server1 that runs Windows Server 2016. Object access auditing is configured on Server1. You need to filter the Security event log to show all log entries that relate to a user named User1. What should you do?

- A. Right-click the Security log, and then click Filter Current Log... On the Filter tab, type a value in the User box.
- B. Right-click the Security log, and then click Filter Current Log... On the Filter tab, select a value from the Event sources box.
- C. Right-click the Security log, and then click Create Custom View... On the Filter tab, type a value in the User box.
- D. Right-click the Security log, and then click Filter Current Log... On the XML tab, modify the QueryList entry and set an EventData tag.

Answer: A

Explanation:

Right clicking the event log name and selecting the "Filter Current Log" will display various options for filtering the event log. These options are:

References: <https://blogs.technet.microsoft.com/rmilne/2014/08/06/quick-tip-event-viewer-filtering/>

NEW QUESTION 278

Note: This question is part of a series of questions that present the same scenario. Each question in the series contains a unique solution that might meet the stated goals. Some question sets might have more than one correct solution, while others might not have a correct solution.

After you answer a question in this section, you will NOT be able to return to it. As a result, these questions will not appear in the review screen.
You have an Exchange Server 2016 organization.
Some users access the mailbox on their mobile device by using Exchange ActiveSync.
You need to prevent the users from synchronizing more than one month of email or calendar data to their device.
Solution: You deploy an Allow/Block/Quarantine policy. Does this meet the goal?

- A. Yes
- B. No

Answer: B

NEW QUESTION 281

You have two servers named Server1 and Server2 that run Windows Server 2016.
You plan to implement Storage Replica to replicate the contents of volumes on Server1 to Server2. You need to ensure that the replication traffic between the servers is limited to a maximum of 100 Mbps.
Which cmdlet should you run?

- A. New-NetQosPolicy
- B. Set-NetworkController
- C. New-NetTransportFilter
- D. New-StorageQosPolicy
- E. Set-NetTCPSetting
- F. Set-NetUDPSetting

Answer: A

Explanation:

References: <https://docs.microsoft.com/en-us/powershell/module/netqos/new-netqospolicy?view=win10-ps>

NEW QUESTION 282

Note: This question is part of a series of questions that present the same scenario. Each question in the series contains a unique solution that might meet the stated goals. Some question sets might have more than one correct solution, while others might not have a correct solution.
After you answer a question in this section, you will NOT be able to return to it. As a result, these questions will not appear in the review screen.
Your network contains an Active Directory forest.
You install Windows Server 2016 on 10 virtual machines.
You need to deploy the Web Server (IIS) server role identically to the virtual machines.
Solution: You use Windows PowerShell Desired State Configuration (DSC) to create a default configuration, and then you apply the configuration to the virtual machines.
Does this meet the goal?

- A. Yes
- B. No

Answer: A

Explanation:

References:
<https://www.simple-talk.com/sysadmin/powershell/powershell-desired-state-configuration-the-basics/>

NEW QUESTION 285

Note: This question is part of a series of questions that use the same scenario. For your convenience, the scenario is repeated in each question. Each question presents a different goal and answer choices, but the text of the scenario is exactly the same in each question in this series.
A company named Contoso, Ltd. has several servers that run Windows Server 2016. Contoso has a Hyper-V environment that uses failover clustering and Windows Server Update Services (WSUS). The environment contains several Windows containers and several virtual machines.
The WSUS deployment contains one upstream server that is located on the company's perimeter network and several downstream servers located on the internal network. A firewall separates the upstream server from the downstream servers.
You plan to deploy a human resources application to a new server named HRServer5. HRServer5 contains a FAT32-formatted data volume.
The CIO of Contoso identifies the following requirements for the company's IT department:
Which two actions should you perform to meet the encryption requirement for WSUS? Each correct answer presents part of the solution.

- A. Require SSL on the Inventory virtual directory.
- B. Require SSL on the ClientWebService virtual directory.
- C. Create a firewall rule to allow TCP port 443.
- D. Create a firewall rule to allow TCP port 8531.

Answer: BC

Explanation:

References:
<https://technet.microsoft.com/en-us/library/bb633246.aspx> https://en.wikipedia.org/wiki/List_of_TCP_and_UDP_port_numbers

NEW QUESTION 288

Note: This question is part of a series of questions that use the same scenario. For your convenience, the scenario is repeated in each question. Each question presents a different goal and answer choices, but the text of the scenario is exactly the same in each question in this series.
A company named Contoso, Ltd. has several servers that run Windows Server 2016. Contoso has a Hyper-V environment that uses failover clustering and Windows Server Update Services (WSUS). The environment contains several Windows containers and several virtual machines.
The WSUS deployment contains one upstream server that is located on the company's perimeter network and several downstream servers located on the internal network. A firewall separates the upstream server from the downstream servers.

You plan to deploy a human resources application to a new server named HRServer5. HRServer5 contains a FAT32-formatted data volume. The CIO of Contoso identifies the following requirements for the company's IT department:

- Deploy a failover cluster to two new virtual machines.
- Store all application databases by using Encrypted File System (EFS).
- Ensure that each Windows container has a dedicated IP address assigned by a DHCP server.
- Produce a report that lists the processor time used by all of the processes on a server named Server1 for five hours.
- Encrypt all communication between the internal network and the perimeter network, including all WSUS communications.
- Automatically load balance the virtual machines hosted in the Hyper-V cluster when processor utilization exceeds 70 percent.

Which networking mode should you configure for the Windows containers?

- A. 12tunnel
- B. 12bridge
- C. network address translation (NAT)
- D. transparent

Answer: C

Explanation:

References: <https://blogs.technet.microsoft.com/virtualization/2016/05/05/windows-container-networking/>

NEW QUESTION 291

Your network contains an Active Directory domain named contoso.com. The domain contains two servers named Server1 and Server2 that run Windows Server 2016. Server1 and Server2 have multiple local disks attached. You need to create a storage pool by using Storage Spaces Direct. Which three actions should you perform in sequence? To answer, move the appropriate actions from the list of actions to the answer area and arrange them in the correct order.

Actions

From Server1, run the **New-SpacesPool** cmdlet.

On Server1 and Server2, install the Failover Clustering feature.

From Server1, run the **New-StorageFileServer** cmdlet.

From Server1, run the **New-Cluster** cmdlet.

On Server1 and Server2, install the Storage Replica feature.

From Server1, run the **Enable-ClusterStorageSpacesDirect** cmdlet.

On Server1 and Server2, install the File Server role service.

Answer Area

- A. Mastered
- B. Not Mastered

Answer: A

Explanation:

References: <https://docs.microsoft.com/en-us/windows-server/storage/storage-spaces/deploy-storage-spaces-direct>

NEW QUESTION 294

.....

THANKS FOR TRYING THE DEMO OF OUR PRODUCT

Visit Our Site to Purchase the Full Set of Actual 70-740 Exam Questions With Answers.

We Also Provide Practice Exam Software That Simulates Real Exam Environment And Has Many Self-Assessment Features. Order the 70-740 Product From:

<https://www.2passeasy.com/dumps/70-740/>

Money Back Guarantee

70-740 Practice Exam Features:

- * 70-740 Questions and Answers Updated Frequently
- * 70-740 Practice Questions Verified by Expert Senior Certified Staff
- * 70-740 Most Realistic Questions that Guarantee you a Pass on Your FirstTry
- * 70-740 Practice Test Questions in Multiple Choice Formats and Updatesfor 1 Year