

## 70-740 Dumps

# Installation, Storage, and Compute with Windows Server 2016

<https://www.certleader.com/70-740-dumps.html>



**NEW QUESTION 1**

Note: This question is part of a series of questions that present the same scenario. Each question in the series contains a unique solution that might meet the stated goals. Some question sets might have more than one correct solution, while others might not have a correct solution.

After you answer a question in this section, you will NOT be able to return to it. As a result, these questions will not appear in the review screen.

You have a server named Server1 that runs Windows Server 2016. Server1 has the Hyper-V server role and Docker installed.

You pull the Microsoft/iis Docker image to Server1.

You need to view the available space in the Microsoft/iis Docker image. Solution: You run the command `docker run -d Microsoft/iis`.

You open Disk Management on Server1. Does this meet the goal?

- A. Yes
- B. No

**Answer: B**

**NEW QUESTION 2**

Note: This question is part of a series of questions that present the same scenario. Each question in the series contains a unique solution that might meet the stated goals. Some question sets might have more than one correct solution, while others might not have a correct solution.

After you answer a question in this section, you will NOT be able to return to it. As a result, these questions will not appear in the review screen.

You have two servers that run Windows Server 2016.

You have a server named Server1 that runs Windows Server 2016. Server1 has the Hyper-V server role and Docker installed.

You pull the Microsoft/iis Docker image to Server1.

You need to view the available space in the Microsoft/iis Docker image. Solution: You run the following commands.

```
docker run --name container1 --isolation hyperv -d Microsoft/iis docker exec -i container1 cmd.exe dir
```

Does this meet the goal?

- A. Yes
- B. No

**Answer: B**

**NEW QUESTION 3**

Note: This question is part of a series of questions that present the same scenario. Each question in the series contains a unique solution that might meet the stated goals. Some question sets might have more than one correct solution, while others might not have a correct solution.

After you answer a question in this section, you will NOT be able to return to it. As a result, these questions will not appear in the review screen.

You have two servers that run Windows Server 2016.

You have a server named Server1 that runs Windows Server 2016. Server1 has the Hyper-V server role and Docker installed.

You pull the Microsoft/iis Docker image to Server1.

You need to view the available space in the Microsoft/iis Docker image. Solution: You run the following commands.

```
docker run --name container1 -d Microsoft/iis docker exec -i container1 cmd.exe
```

```
dir
```

Does this meet the goal?

- A. Yes
- B. No

**Answer: A**

**Explanation:**

References: [https://docs.docker.com/engine/reference/commandline/container\\_exec/#options](https://docs.docker.com/engine/reference/commandline/container_exec/#options) <https://www.windows-commandline.com/get-file-size-directory-size-command/>

**NEW QUESTION 4**

You have a Windows Server 2016 failover Cluster named Cluster 1 that contains four nodes named Server1, Server2, Server3, and Server4.

You need to configure Cluster to use directly attached storage to store several virtual machines. You run the `Enable-ClusterStorageSpacesDirect` cmdlet on Server1.

What should you do next?

- A. Run the `Enable-ClusterStorageSpacesDirect` cmdlet on the other three nodes.
- B. Create volumes.
- C. Create storage pool.
- D. Add-ClustcrResource mdlet on all of the nodes.

**Answer: B**

**Explanation:**

References:

<https://medium.com/beyond-the-helpdesk/setting-up-and-configuring-storage-spaces-direct-in-windows-server-2016-4d2be85a8f7d>

**NEW QUESTION 5**

You have a Hyper-V host named Server1 that runs Windows Server 2016. Server1 hosts a virtual machine named VM1 that runs Windows Server 2016.

On VM1, Dynamic Memory is disabled, MAC spoofing is enabled for the virtual network adapter, and checkpoints are disabled. You need to ensure that you can install the Hyper-V server role on VM1. What should you do?

- A. Shut down VM1, enable Dynamic Memory on VM1 and then start VM1.
- B. Configure VM1 to use standard checkpoints.
- C. Disable Hyper-V integration services for VM1 and then restarts VM1.

D. Shut down VMI, run the Set-VMProcessor cmdlet and then start VM1.

**Answer:** D

**Explanation:**

References:

<https://docs.microsoft.com/en-us/virtualization/hyper-v-on-windows/user-guide/nested-virtualization>

**NEW QUESTION 6**

You have a server named Server 1 that runs Windows Server 2016. Windows Defender is enabled on Server1.

Server1 runs an application named App that stores various types of files in Microsoft OneDrive for Business, Microsoft OneDrive, and Microsoft SharePoint Online.

App also interacts with several local services,

You need to prevent Windows Defender from scanning any files opened by App. Should you do on Server1?

- A. Run the Set-ExecutionPolicy cmdlet
- B. From the Windows Defender settings, configure a file exclusion.
- C. From the Windows Defender settings, configure a process exclusion.
- D. Modify the cloud-based protection settings in Windows Defender.

**Answer:** B

**Explanation:**

References:

<https://www.windowscentral.com/how-exclude-files-and-folders-windows-defender-antivirus-scans>

**NEW QUESTION 7**

You have a server named Server1 that runs Windows Server 2016. Windows Defender is enabled on Server1.

Server1 runs an application named App1 that stores various types of files in Microsoft OneDrive for Business, Microsoft OneDrive, and Microsoft SharePoint Online. App1 also interacts with several local services.

You need to prevent Windows Defender from scanning any files opened by App1. What should you do on Server1?

- A. From the Windows Defender settings, configure a file exclusion.
- B. Run the New-ChildPolicy cmdlet.
- C. Modify the real-time protection settings in Windows Defender.
- D. From the Windows Defender settings, configure a process exclusion.

**Answer:** A

**NEW QUESTION 8**

You have a Hyper-V server named Server1 that runs Windows Server 2012 R2.

Server1 hosts a virtual machine named VM1 that runs Windows Server 2016. VM1 connects to an external virtual switch named Switch1.

You can ping VM1 from Server1.

You upgrade Server1 to Windows Server 2016.

You need to ensure that you can connect to VM1 by using PowerShell Direct. What should you do?

- A. Configure the firewall rules on Server1.
- B. Enable the Hyper-V extensible switch extensions on Server1.
- C. Upgrade the configuration version of VM1.
- D. Configure the firewall rules on VM1.

**Answer:** C

**NEW QUESTION 9**

You have a Nano Server named Nano1.

Nano1 is configured to perform real-time protection scans by using Windows Defender.

You need to ensure that all of the files located in D:\App1\Data are excluded from the real-time protection scans.

What should you do?

- A. From the properties of D:\App1\Data folder, modify the permissions.
- B. Run the Set-MpPreference cmdlet and specify the –ExclusionPath parameter.
- C. From a command prompt, run the attrib command and specify the –s parameter.
- D. Run the Get-ChildItem cmdlet and specify the –Exclude parameter.

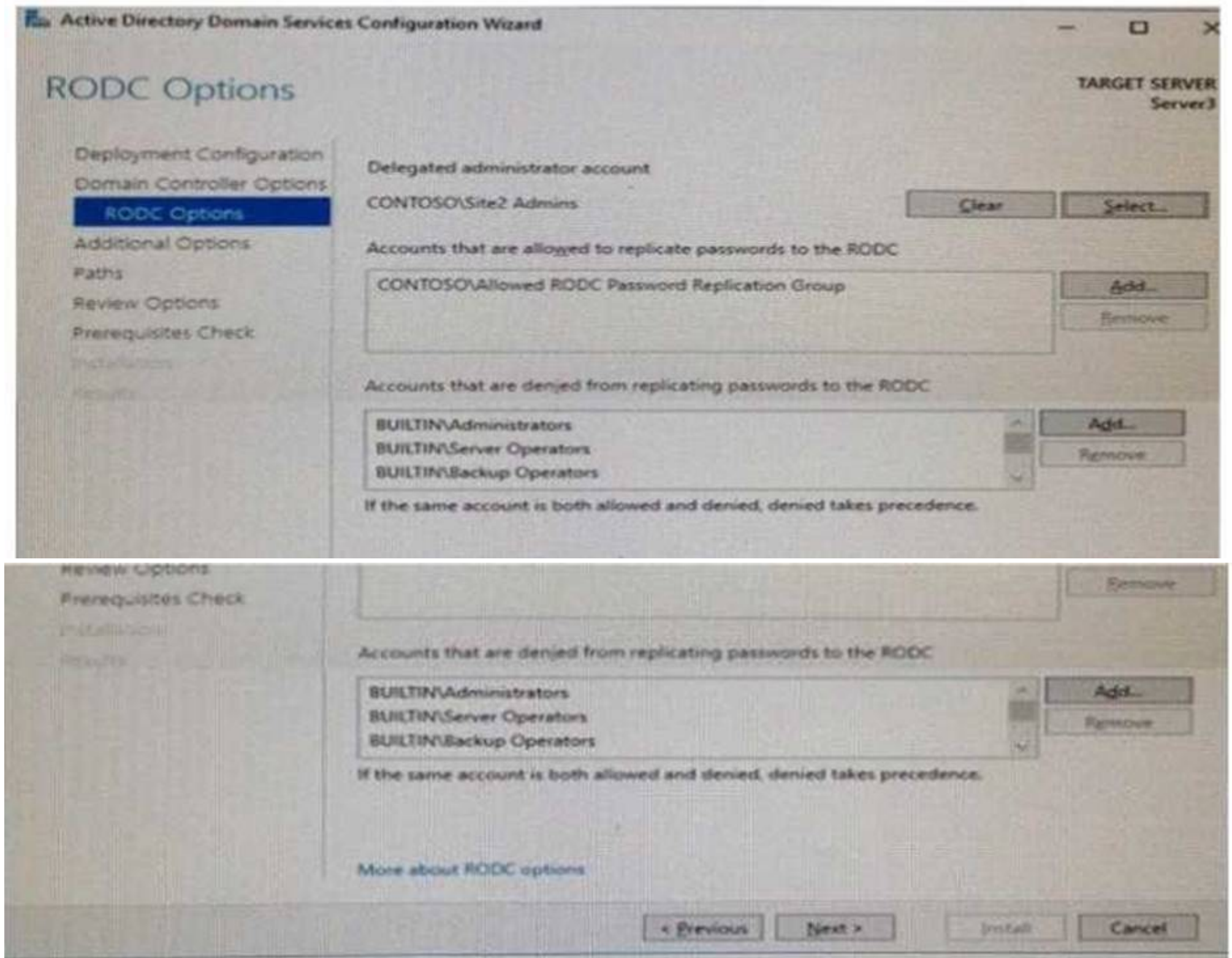
**Answer:** B

**NEW QUESTION 10**

**HOTSPOT**

Your network contains an Active Directory forest. The forest contains two sites named Site1 and Site2. Site1 contains 10 domain controllers. Site1 and Site2 connect to each other by using a WAN link.

You run the Active Directory Domain Services Configuration Wizard as shown in the following graphic.



Server3 is the only server in Site2

Use the drop-down menus to select the answer choice that completes each statement based on the information graphic.

Members of the Site2 Admins group will be able to [answer choice] on Server 3.

make updates to SYSVOL content  
manage the password replication policy  
stop and start Active Directory Domain Services (AD DS)

If the WAN link fails, users who are members of the Allowed RODC Password Replication Group [answer choice] in Site2.

will be prevented from logging on  
will log on with reduced security rights  
can log on if they have previously logged on

- A. Mastered
- B. Not Mastered

**Answer: A**

**Explanation:**



Members of the Site2 Admins group will be able to [answer choice] on Server 3.

make updates to SYSVOL content  
manage the password replication policy  
stop and start Active Directory Domain Services (AD DS)

If the WAN link fails, users who are members of the Allowed RODC Password Replication Group [answer choice] in Site2.

will be prevented from logging on  
will log on with reduced security rights  
can log on if they have previously logged on

#### NEW QUESTION 10

You have a Hyper-V host named Served That runs Windows Server 2016

Server1 has a virtual machine named VM1 VM1 is configured to run the Docker daemon. On VM1 you have a container network that uses transparent mode

You need to ensure that containers that run on VM1 can obtain IP addresses from DHCP. What should you do?

- A. On VM1, rundocker network connect
- B. On Server1 runGet-VMNetworkAdapter-VMName VM1| Set-VMNetworkAdapter- MacAddressSpoofing On
- C. On Server1, rundocker network connect
- D. On VM1, runGet-VMNetworkAdapter-VMName VM1| Set-VMNetworkAdapter- MacAddressSpoofing On.

**Answer:** D

#### NEW QUESTION 11

You have a server named Served that runs Windows Server 2016. Server1 will be used as a VPN

server. You need to configure Server1 to support VPN Reconnect. Which VPN protocol should you use?

- A. PPTP
- B. L2TP
- C. SSTP
- D. IKEv2

**Answer:** D

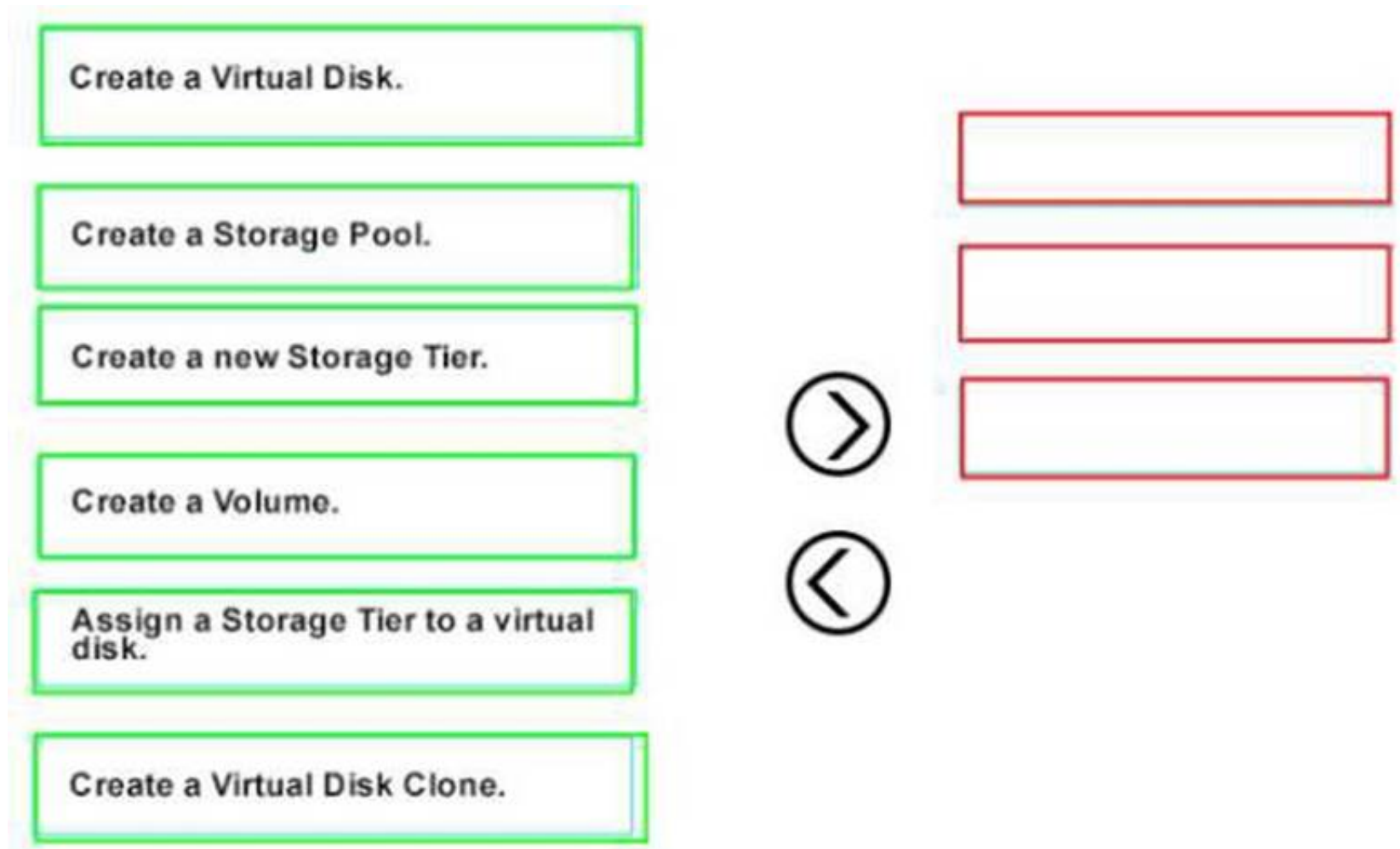
#### NEW QUESTION 14

DRAG DROP

You have a server that runs Windows Server 2016 You install three additional physical disks named Disk1. Disk2. and Disk3 You plan to use these physical disks to store data

You need to create a volume to store data The solution must prevent data loss in the event of a single disk failure

Which three actions should you perform in sequence'? To answer, move the appropriate actions from the list of actions to the answer area and arrange them in the correct order



- A. Mastered
- B. Not Mastered

**Answer:** A

**Explanation:**



#### NEW QUESTION 17

Your network contains an Active Directory domain named contoso.com. The domain contains two servers named Server1 and Server2 that have the same hardware configuration. You need to asynchronously replicate volume F: from Server1 to Server2. What should you do?

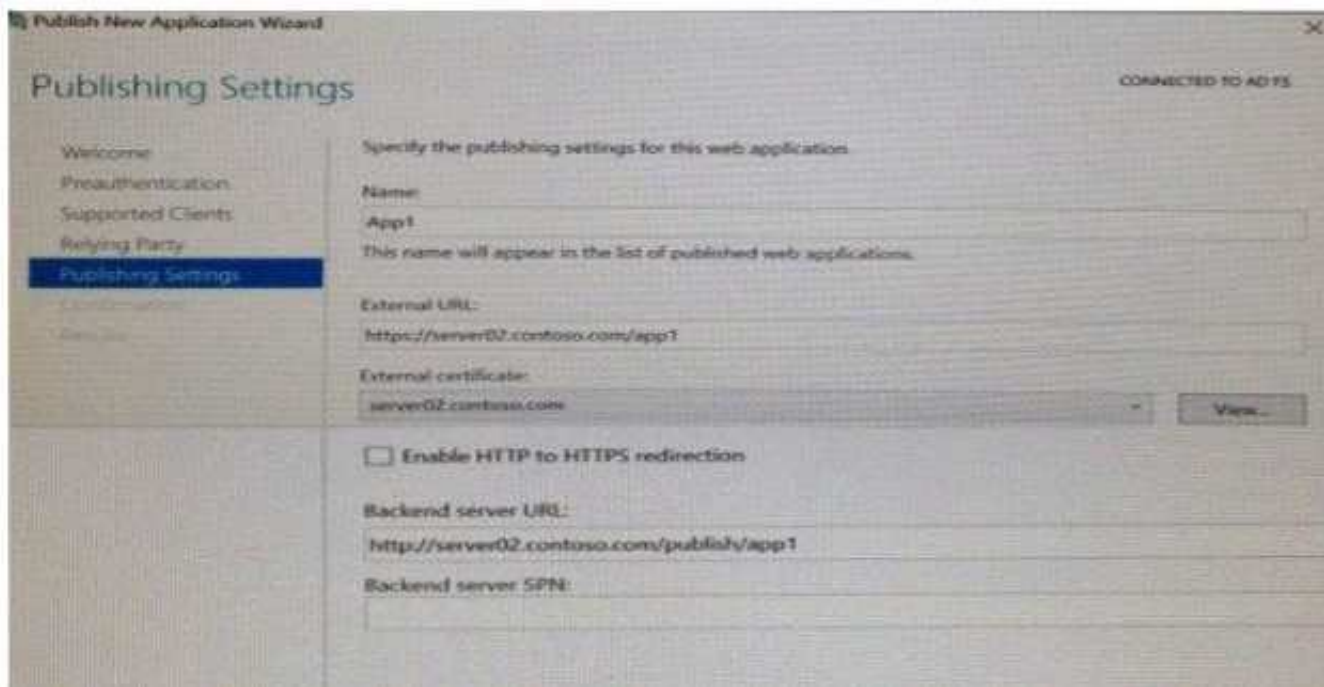
- A. Run `New-SRPartnership` and specify the `-RephcationMode` parameter.
- B. install the Failover Clustering feature and create a new cluster resource group.
- C. Install the Failover Clustering feature and use Cluster Shared Volumes (CSV).
- D. Run `Set-DfsrServiceConfiguration` and specify the `-RPCPort` parameter.

**Answer:** A

#### NEW QUESTION 19

HOTSPOT

You have a server named Served that runs Windows Server 2016. Server1 has the Windows Application Proxy role service installed. You are publishing an application named App1 that will use Integrated Windows authentication as shown in the following graphic.



Use the drop-down menus to select the answer choice that completes each statement based on the information presented in the graphic

Before you can complete the wizard, you must [answer choice]

change the external certificate  
configure the Backend server SPN  
select Enable HTTP to HTTPS redirection

To ensure that users can access App1 externally, you must  
change the External URL to [answer choice.]

https://app1.contoso.com/app1  
https://server02.contoso.com/app1  
https://server02.contoso.com/publish/app1

- A. Mastered
- B. Not Mastered

**Answer:** A

**Explanation:**

Before you can complete the wizard, you must [answer choice]

change the external certificate  
configure the Backend server SPN  
select Enable HTTP to HTTPS redirection

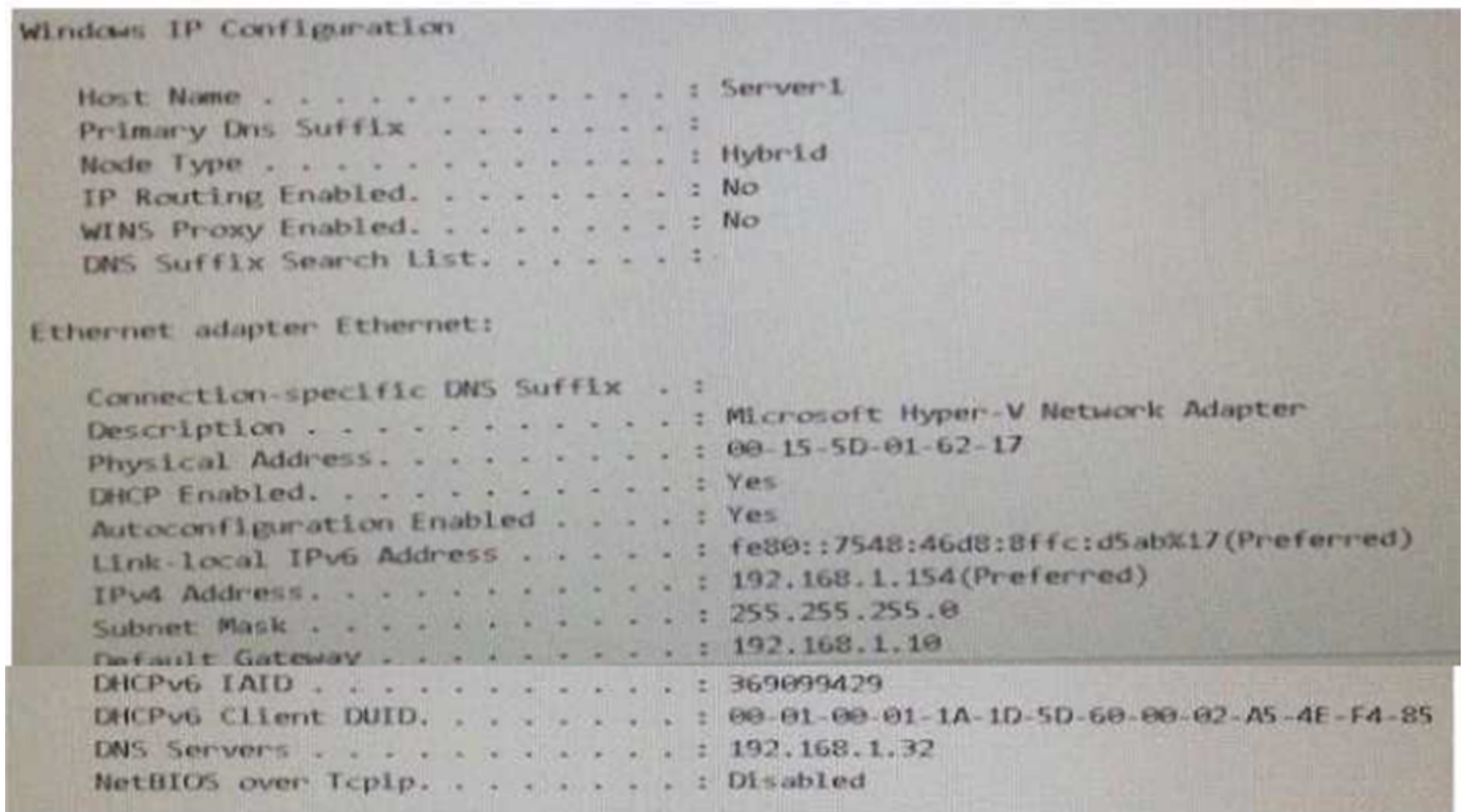
To ensure that users can access App1 externally, you must  
change the External URL to [answer choice.]

https://app1.contoso.com/app1  
https://server02.contoso.com/app1  
https://server02.contoso.com/publish/app1

#### NEW QUESTION 21

You are configuring a Windows Server 2016 failover cluster in a workgroup.  
Before installing one of the nodes, you run the ipconfig /all command and receive the following output





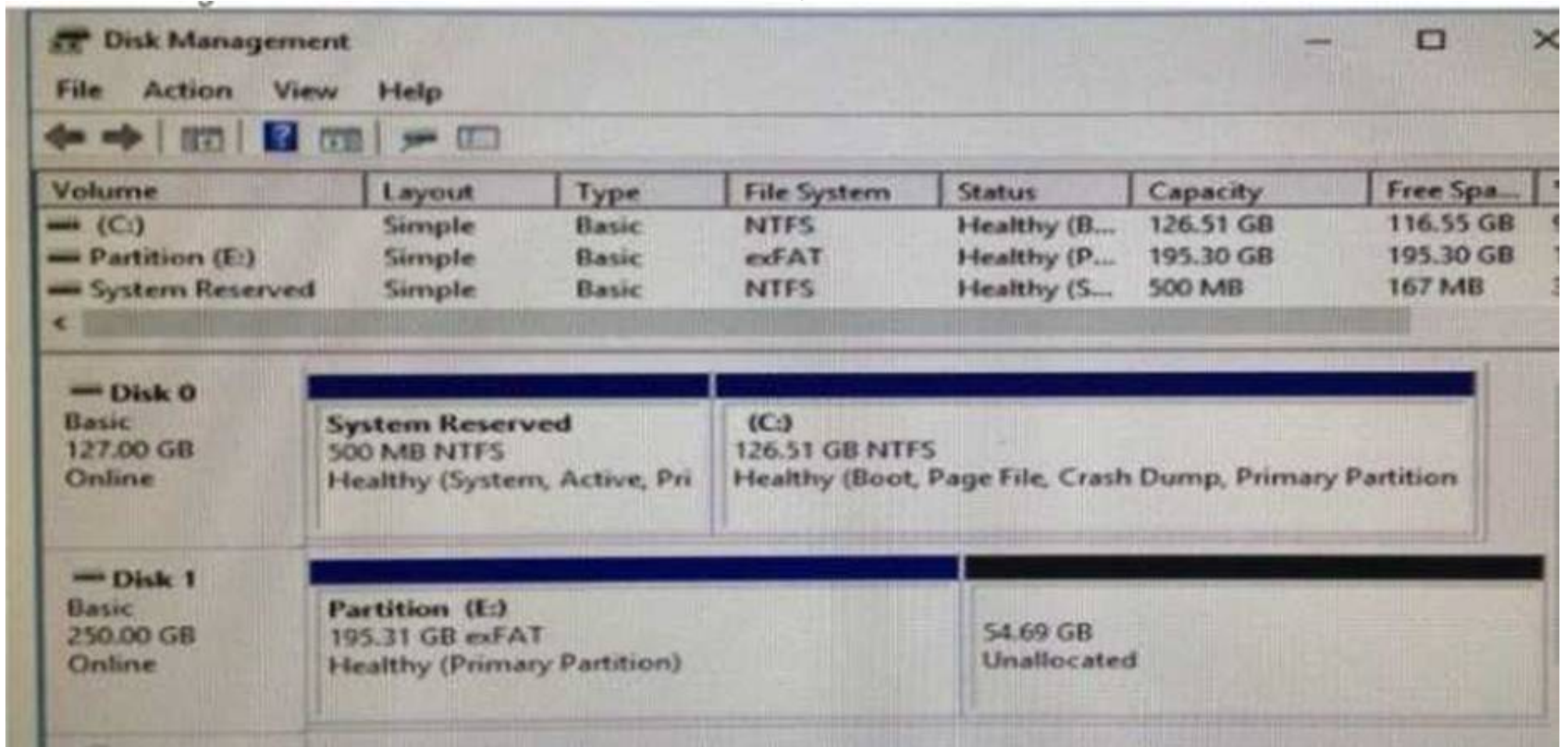
You need to ensure that Server 1 can be added as a node in the cluster What should you do?

- A. Assign a static IP address
- B. Change the Node Type to Broadcast
- C. Configure a DNS suffix
- D. Enable NetBIOS over TCP/IP

**Answer: C**

#### NEW QUESTION 22

You have a server named Server 1 that runs Windows Server 2016 The disk configuration for Server 1 is shown in the exhibit



You add Server1 to a cluster

You need to ensure that you can use Disk1 (or Storage Spaces Direct) What should you do first?

- A. Delete Partition (E:)
- B. Set Disk1 to offline.
- C. Convert Disk 1 to a dynamic disk
- D. Convert Partition (E:) to ReFS

**Answer: A**



## NEW QUESTION 26

### HOTSPOT

You have an Active Directory domain named Contoso.com. The domain contains Hyper-V hosts named Server1 and Server2 that run Windows Server 2016. The Hyper-V hosts are configured to use NVGRE for network virtualization.

You have four virtual machines that are connected to an external switch. The virtual machines are configured as shown.

To which virtual machine or virtual machines can VM1 and VM3 connect? To answer, select the appropriate options in the answer area.

Virtual Machine Name	Hyper-V host	IP address	Netmask	GRE key
VM 1	Server1	192.168.1.16	255.255.255.0	16
VM 2	Server1	192.168.1.232	255.255.255.0	32
VM 3	Server2	192.168.1.32	255.255.255.0	32
VM 4	Server2	192.168.1.25	255.255.255.0	25
VM 5	Server2	192.168.1.116	255.255.255.0	16
VM 6	Server2	192.168.1.132	255.255.255.0	32

VM1 can connect to:

VM2 only  
VM5 only  
VM2, VM3, VM5 and VM6 only  
VM2, VM3, VM4, VM5, and VM6

VM3 can connect to:

VM6 only  
VM2, and VM6 only  
VM4, VM5 and VM6 only  
VM1, VM2, VM5, and VM6 only  
VM1, VM2, VM4, VM5, and VM6

- A. Mastered  
B. Not Mastered

**Answer:** A

**Explanation:**

VM1 can connect to:

VM2 only  
VM5 only  
VM2, VM3, VM5 and VM6 only  
VM2, VM3, VM4, VM5, and VM6

VM3 can connect to:

VM6 only  
VM2, and VM6 only  
VM4, VM5 and VM6 only  
VM1, VM2, VM5, and VM6

## NEW QUESTION 29

### DRAG DROP

You have a physical server named Server1 that runs Windows Server 2016. Server1 is a Hyper-V host. On Server1, you create a virtual machine named VM1 that runs Windows Server 2016.

You plan to install the Hyper-V server role on VM1.

You need to ensure that you can configure VM1 to host virtual machines.

How should you complete the Windows PowerShell script? To answer, drag the appropriate values to the correct targets. Each value may be used once, more than once, or not at all. You may need to drag the split bar between panes or scroll to view content.

**Values**

Set-VMProcessor -VMName VMHOST1 -ExposeVirtualizationExtensions  -Count 2

Set-VMMemory VMHOST1 -DynamicMemoryEnabled

Get-VMNetworkAdapter -VMName VMHOST1 | Set-VMNetworkAdapter -MacAddressSpoofing on

- A. Mastered  
B. Not Mastered

**Answer:** A

**Explanation:**

**Answer Area**

**Values**

Set-VMProcessor -VMName VMHOST1 -ExposeVirtualizationExtensions  -Count 2

Set-VMMemory VMHOST1 -DynamicMemoryEnabled

Get-VMNetworkAdapter -VMName VMHOST1 | Set-VMNetworkAdapter -MacAddressSpoofing on

**NEW QUESTION 34**

**HOTSPOT**

Your network contains an Active Directory domain named contoso.com. The domain contains a member server named Server1 that runs Windows Server 2016. You install IP Address Management (IPAM) on Server1. You select the automatic provisioning method, and then you specify a prefix of IPAM1. You need to configure the environment for automatic IPAM provisioning. Which cmdlet should you run? To answer, select the appropriate options in the answer area.

Add-IpamDiscoveryDomain  
Enable-IpamCapability  
Invoke-IpamGpoProvisioning  
Set-IpamConfiguration

-Domain "Contoso.com"

-AssetTag  
-DisciverDns  
-GpoPrefixName  
-ProvisioningMethod

"IPAM1"

- A. Mastered  
B. Not Mastered

**Answer:** A

**Explanation:**

Add-IpamDiscoveryDomain  
Enable-IpamCapability  
Invoke-IpamGpoProvisioning  
Set-IpamConfiguration

-Domain "Contoso.com"

-AssetTag  
-DisciverDns  
-GpoPrefixName  
-ProvisioningMethod

"IPAM1"

**NEW QUESTION 39**

Note: This question is part of a series of questions that use the same similar answer choices. An answer choice may be correct for more than one question in the series. Each question is independent of the other questions in this series. Information and details provided in a question apply only to that question. You have two servers named Server1 and Server2 that run Windows Server 2016. Server1 and Server2 have the Hyper-V server role installed.

An iSCSI SAN connects to the network  
You create a LUN on the SAN and configure both servers to connect to the iSCSI target  
You create a failover cluster and add Server1 and Server2 to the cluster. You connect both servers to the iSCSI target and format the shared storage  
You need to add the shared storage to the cluster The solution must ensure that virtual machines running on both nodes can access the shared storage simultaneously.  
Which tool should you use?

A. the clussvc.exe command  
B. the cluster.exe command  
C. the Computer Management console  
D. the configurehyperv.exe command  
E. the Disk Management console  
F. the Failover Cluster Manager console  
G. the Hyper-V Manager console  
H. the Server Manager Desktop app

Answer: F

NEW QUESTION 44

In this section, you'll see one or more sets of questions with the same scenario and problem Each question presents a unique solution to the problem, and you must determine whether the solution meets the stated goals. Any of the solutions might solve the problem. It is also possible that none of the solutions solve the problem.  
Once you answer a question in this section, you will NOT be able to return to it. As a result, these questions will not appear in the review screen  
Note: This question is part of a series of questions that present the same scenario. Each question in the series contains a unique solution. Determine whether the solution meets the stated goals.  
Your network contains an Active Directory domain named contoso.com. The domain contains a DNS server named Server1. All client computers run Windows 10. On Server1, you have the following zone configuration

ZoneName	ZoneType	IsAutoCreated	IsDsIntegrated	IsReverseLookupZone	IsSign
-----	-----	-----	-----	-----	-----
_msdcs.contoso.com	Primary	False	True	False	False
adatum.com	Forwarder	False	False	False	
contoso.com	Primary	False	True	False	False
fabrikam.com	Primary	False	False	False	True
TrustAnchors	Primary	False	True	False	False

You have the following subnets defined on Server1.

Name	IPv4Subnet	IPv6Subnet
----	-----	-----
Subnet1	{10.0.0.0/24}	
Subnet2	{10.0.1.0/24}	
Subnet3	{192.168.15.0/24}	
Subnet4	{172.16.1.0/24}	

You need to prevent Server1 from resolving queries from DNS clients located on Subnet4 Server1 must resolve queries from all other DNS clients  
Solution From the Security setting of each zone on Server1, you modify the permissions Does this meet the goal?

A. Yes  
B. No

Answer: B

NEW QUESTION 46

In this section, you'll see one or more sets of questions with the same scenario and problem Each question presents a unique solution to the problem, and you must determine whether the solution meets the stated goals. Any of the solutions might solve the problem. It is also possible that none of the solutions solve the problem.  
Once you answer a question in this section, you will NOT be able to return to it. As a result, these questions will not appear in the review screen  
Note: This question is part of a series of questions that present the same scenario. Each question in the series contains a unique solution. Determine whether the solution meets the stated goals.  
Your network contains an Active Directory domain named contoso.com. The domain contains a DNS server named Server1. All client computers run Windows 10. On Server1, you have the following zone configuration



ZoneName	ZoneType	IsAutoCreated	IsDsIntegrated	IsReverseLookupZone	IsSign
-----	-----	-----	-----	-----	-----
_msdcs.contoso.com	Primary	False	True	False	False
adatum.com	Forwarder	False	False	False	
contoso.com	Primary	False	True	False	False
fabrikam.com	Primary	False	False	False	True
TrustAnchors	Primary	False	True	False	False

You have the following subnets defined on Server1.

Name	IPv4Subnet	IPv6Subnet
-----	-----	-----
Subnet1	{10.0.0.0/24}	
Subnet2	{10.0.1.0/24}	
Subnet3	{192.168.15.0/24}	
Subnet4	{172.16.1.0/24}	

You need to prevent Server1 from resolving queries from DNS clients located on Subnet4 Server1 must resolve queries from all other DNS clients  
Solution From a Group Policy object (GPO) in the domain, you modify the Network List Manager Policies Does this meet the goal?

- A. Yes
- B. No

Answer: B

NEW QUESTION 51

In this section, you'll see one or more sets of questions with the same scenario and problem Each question presents a unique solution to the problem, and you must determine whether the solution meets the stated goals. Any of the solutions might solve the problem. It is also possible that none of the solutions solve the problem.  
Once you answer a question in this section, you will NOT be able to return to it. As a result, these questions will not appear in the review screen  
Note: This question is part of a series of questions that present the same scenario. Each question in the series contains a unique solution. Determine whether the solution meets the stated goals.  
Your network contains an Active Directory domain named contoso.com. The domain contains a DNS server named Server1. All client computers run Windows 10. On Server1, you have the following zone configuration

ZoneName	ZoneType	IsAutoCreated	IsDsIntegrated	IsReverseLookupZone	IsSign
-----	-----	-----	-----	-----	-----
_msdcs.contoso.com	Primary	False	True	False	False
adatum.com	Forwarder	False	False	False	
contoso.com	Primary	False	True	False	False
fabrikam.com	Primary	False	False	False	True
TrustAnchors	Primary	False	True	False	False

You have the following subnets defined on Server1.

Name	IPv4Subnet	IPv6Subnet
-----	-----	-----
Subnet1	{10.0.0.0/24}	
Subnet2	{10.0.1.0/24}	
Subnet3	{192.168.15.0/24}	
Subnet4	{172.16.1.0/24}	

You need to prevent Server1 from resolving queries from DNS clients located on Subnet4 Server1 must resolve queries from all other DNS clients  
Solution From Windows PowerShell on Setver1, you run the Add-DnsServerTrustAnchor cmdtel Does this meet the goal?

- A. Yes
- B. No

Answer: A

NEW QUESTION 56

Note: This question is part of a series of questions that present the same scenario. Each question in the series contains a unique solution that might meet the stated goals. Some question sets might have more than one correct solution, white others might not have a correct solution.  
After you answer a question in this section, you will NOT be able to return to it. As a result, these questions will not appear in the review screen.  
You are a server administrator at a company named Contoso, Ltd.  
Contoso has a Windows Server 2016 Hyper-V environment configured as shown in the following table.

Hyper-V host name	Configuration	Virtual switch name
Host1	- Uses an Intel processor - Is a member of a SAN named SAN1	Switch1
Host2	- Uses an AMD processor - Has local storage only	Switch2
Host3	- Uses an Intel processor - Is a member of a SAN named SAN1	Switch1
Host4	- Uses an Intel processor - Has local storage only	Switch2

All of the virtual switches are of the external type.

You need to ensure that you can move virtual machines between the hosts without causing the virtual machines to disconnect from the network.

Solution: You implement a Hyper-V Replica between Host2 and Host4. Does this meet the goal?

- A. Yes
- B. No

**Answer:** B

#### NEW QUESTION 59

Note: This question is part of a series of questions that present the same scenario. Each question in the series contains a unique solution that might meet the stated goals. Some question sets might have more than one correct solution, while others might not have a correct solution.

Your network contains an Active Directory forest

You install Windows Server 2016 on 10 virtual machines.

You need to deploy the Web Server (IIS) server role identically to the virtual machines.

Solution: You use Windows PowerShell Desired State Configuration (DSC) to create a default configuration and then you apply the configuration the virtual machines.

- A. Yes
- B. No

**Answer:** A

#### Explanation:

References:

<https://www.simple-talk.com/sysadmin/powershell/powershell-desired-state-configuration-the-basics/>

#### NEW QUESTION 61

Note: This question is part of a series of questions that present the same scenario. Each question in the series contains a unique solution that might meet the stated goals. Some question sets might have more than one correct solution, while others might not have a correct solution.

Your network contains an Active Directory forest

You install Windows Server 2016 on 10 virtual machines.

You need to deploy the Web Server (IIS) server role identically to the virtual machines.

Solution: From a Group policy object (GPO), you create an application control policy, and then you apply the policy to the virtual machines.

Does this meet the goal?

- A. Yes
- B. No

**Answer:** B

#### NEW QUESTION 64

Note: This question is part of a series of questions that present the same scenario. Each question in the series contains a unique solution that might meet the stated goals. Some question sets might have more than one correct solution, while others might not have a correct solution.

Your network contains an Active Directory forest

You install Windows Server 2016 on 10 virtual machines.

You need to deploy the Web Server (IIS) server role identically to the virtual machines.

Solution: You create a software installation package, and then you publish the package to the virtual machines by using a Group Policy object (GPO)

Does this meet the goal?

- A. Yes
- B. No

**Answer:** B

#### NEW QUESTION 68

You have an Active Director domain named Contoso.com. The domain contains servers named Server 1, Server2 and Server3 that run Windows Server 2016 Server1 and Server2 are nodes in a Hyper V cluster named Cluster1. You add a Hyper V Replica Broker role named Broker 1 to Cluster 1



Server3 is a Hyper-V server. A virtual machine named VM1 runs on Server3.  
Live Migration is enabled on all three servers and it is configured to use Kerberos authentication only. You need to ensure that you can perform the migration of VM1 to Server2  
What should you do?

- A. Modify the Storage Migration settings on Server3
- B. Modify the Cluster Permissions for Cluster1.
- C. Add the Server3 computer account to the Replicator group on Server1 and Server2.
- D. Modify the Delegation settings for the Server3 computer account.

Answer: D

Explanation:

References:  
[https://technet.microsoft.com/en-us/library/jj134199\(v=ws.11\).aspx#BKMK\\_Step1](https://technet.microsoft.com/en-us/library/jj134199(v=ws.11).aspx#BKMK_Step1)

NEW QUESTION 73

HOTSPOT  
You implement a Windows Server 2016 failover cluster named Cluster1 as a highly available file server.  
You run the Get-Cluster cmdlet and receive the following output.

```
AddEvictDelay : 60
AdministrativeAccessPoint : Dns
AutoAssignNodeSite : 0
AutoBalancerMode : 2
AutoBalancerLevel : 1
ClusSvcHangTimeout : 135
ClusSvcRegroupStageTimeout : 5
ClusSvcRegroupTickInMilliseconds : 300
ClusterEnforcedAntiAffinity : 0
ClusterFunctionalLevel : 9
ClusterUpgradeVersion : 7
ClusterGroupWaitDelay : 120
ClusterLogLevel : 3
ClusterLogSize : 300
DatabaseReadWriteMode : 0
DefaultNetworkRole : 3
Description :
Domain : contoso.com
EnableSharedVolumes : Enabled
FixQuorum : 0
Id : ec6121be-f816-426b-b550-72cafb943f1b
Name : cluster1
```

Use the drop-down menus to select the answer choice that completes each statement based on the information presented in the graphic.

Answer Area

You can perform Cluster-Aware Updating (CAU) in [answer choice].

self-updating mode only  
remote-updating mode only  
remote-updating mode and self-updating mode

You can use [answer choice] to create a file share in Cluster1.

DFS Management  
Failover Cluster Manager  
File Server Resource Manager  
Server Manager

- A. Mastered
- B. Not Mastered

Answer: A

Explanation:



## Answer Area

You can perform Cluster-Aware Updating (CAU) in **[answer choice]**.

▼

self-updating mode only

remote-updating mode only

remote-updating mode and self-updating mode

You can use **[answer choice]** to create a file share in Cluster1.

▼

DFS Management

Failover Cluster Manager

File Server Resource Manager

Server Manager

### NEW QUESTION 78

Note This question is part of a series of questions that use the same scenario. For your convenience, the scenario is repeated in each question. Each question presents a different goal and answer choices, but the text of the scenario is exactly the same in each question in this series.

Start of Repeated Scenario:

Your network contains an Active Directory domain named contoso.com. The functional level of the forest and the domain is Windows Server 2008 R2. All servers in the domain run Windows Server 2016 Standard. The domain contains 300 client computers that run either Windows 8.1 or Windows 10.

The domain contains nine servers that are configured as shown in the following table.

Name	Configuration	Planned changes
Server1	Domain controller	None
Server2	File server	Run Failover Clustering and Storage Spaces Direct
Server3	File server	Run Failover Clustering and Storage Spaces Direct
Server4	Hyper-V host	Run shielded virtual machines
Server5	Hyper-V host	None
Server6	Member server	Run Active Directory Federation Services (AD FS)
VM1	Virtual machine hosted on Server5	None
VM2	Virtual machine hosted on Server5	None
VM3	Virtual machine hosted on Server5	None

The virtual machines are configured as follows:

- Each virtual machine has one virtual network adapter.
- VM1 and VM2 are part of a Network Load Balancing (NLB) cluster.
- All of the servers on the network can communicate with all of the virtual machines.

End of repeated Scenario.

You need to minimize the likelihood that a virtual machine running malicious code will consume excessive resources on Server5. What should you do?

- Configure the virtual machines as shielded virtual machines.
- Run the Set-VMProcessor cmdlet and specify the –EnableHostResourceProtection Parameter.
- Run the Set-VMProcessor cmdlet and specify the –MaximumCountPerNumaNode Parameter.
- Configure VM Network Adapter Isolation.

**Answer: B**

### NEW QUESTION 82

Note This question is part of a series of questions that use the same scenario. For your convenience, the scenario is repeated in each question. Each question presents a different goal and answer choices, but the text of the scenario is exactly the same in each question in this series.

Start of Repeated Scenario:

A company named Contoso, Ltd. has several servers that run Windows Server 2016. Contoso has a Hyper-V environment that uses failover clustering and Windows Server Update Services (WSUS). The environment contains several Windows containers and several virtual machines.

The WSUS deployment contains one upstream server that is located on the company's perimeter network and several downstream servers located on the internal network. A firewall separates the upstream server from the downstream servers.

You plan to deploy a human resources application to a new server named HRServer5. HRServer5 contains a FAT32-formatted data volume.

The CIO of Contoso identifies the following requirements for the company's IT department:

- Deploy failover cluster to two new virtual machines.
- Store all application databases by using Encrypted File System (EFS).
- Ensure that each Windows container has a dedicated IP address assigned by a DHCP server.
- Produce a report that lists the processor time used by all of the processes on a server named Server1 for five hours.

Encrypt all communication between the internal network and the perimeter network, including all WSUS communications.

• Automatically load balance the virtual machines hosted in the Hyper-V cluster when processor utilization exceeds 70 percent.  
End of Repeated Scenario.  
You need to modify the Hyper V cluster to meet the load balancing requirement for the virtual machine. Which command should you run?

- A. (Get-ClusterParameter) AutoBalanecrMode=2
- B. (Get-Cluster).AutoBalanecrMode=2
- C. (Get-ClusterParameter).AutoBalancerLevel=2
- D. (Get-Cluster).AutoBalancerLevel=2

**Answer:** D

**NEW QUESTION 87**

Note This question is part of a series of questions that use the same scenario. For your convenience, the scenario is repeated in each question. Each question presents a different goal and answer choices, but the text of the scenario is exactly the same in each question in this series.  
Start of Repeated Scenario:  
A company named Contoso, Ltd. has several servers that run Windows Server 2016 Contoso has a Hyper V environment that uses failover clustering and Windows Server Update Services (WSUS). The environment contains several Windows containers and several virtual machines. The WSUS deployment contains one upstream server that is located on the company's perimeter network and several downstream servers located on the internal network, A firewall separates the upstream server from the downstream servers.  
You plan to deploy a human resources application to a new server named HRServer5. HRServer5 contains a FAT32-formatted data volume.  
The CIO of Contoso identifies the following requirements for the company's IT department:

- Deploy failover cluster to two new virtual machines.
  - Store all application databases by using Encrypted File System (EFS).
  - Ensure that each Windows container has a dedicated IP address assigned by a DHCP server
  - Produce a report that lists the processor time used by all of the processes on a server named Server 1 for five hour.
- Encrypt all communication between the internal network and the perimeter network, including all WSUS communications.
- Automatically load balance the virtual machines hosted in the Hyper-V cluster when processor utilization exceeds 70 percent.

End of Repeated Scenario.  
What should you do to prepare the data volume on HRServer5 to store the databases required for the human resources application?

- A. Format the data volume by using ReFS.
- B. Enable Trusted Platform Module (TPM) on HRServer5.
- C. Format the data volume by using NTFS.
- D. Enable BitLocker Drive Encryption (BitLocker) on the data volume.

**Answer:** C

**NEW QUESTION 92**

DRAG DROP  
You have a network that contains several servers that run Windows Server 2016.  
You need to use Desired State Configuration (DSC) to configure the servers to meet the following requirements:  
- Install the Web Server server role  
- Start the World Wide Web Publishing service.

How should you configure the DSC resources? To answer, drag the appropriate values to the correct locations. Each value may be used once, more than once, or not at all. You may need to drag the split bar between panes or scroll to view content.

Values

Name

Service

WindowsFeature

WindowsProcess

Present

Source

Running

Stopped

Answer Area

Value

WebServerRole

{

Ensure = "Value"

Name = "Web-Server"

}

Value

WorldWideWebPublishing

{

Name = "W3SVC"

StartupType = "Automatic"

State = "Value"

}

- A. Mastered
- B. Not Mastered

**Answer:** A

**Explanation:**

Values	Answer Area
<div>Name</div>	<div>WindowsFeature</div> WebServerRole
<div>Service</div>	
<div>WindowsFeature</div>	{
<div>WindowsProcess</div>	Ensure = " <div>Present</div> "
<div>Present</div>	Name = "Web-Server"
<div>Source</div>	}
<div>Running</div>	<div>Service</div> WorldWideWebPublishing
<div>Stopped</div>	{
	Name = "W3SVC"
	StartupType = "Automatic"
	State = " <div>Running</div> "
	}

#### NEW QUESTION 97

You have a server named Server 1 that runs Windows Server 2016.

Server 1 has Internet connectivity. You have a Nano Server image.

You need to download and save a Nano Server package in the Nano Server image. The package is NOT included in the Windows Server 2016 installation media.

Which two cmdlets should you run on Server1?

- A. Set-PackageSource
- B. Install-PackageProvider
- C. Add-AppxProvisionedPackage
- D. Save-NanoServerPackage
- E. Add-WindowsPackage

**Answer:** BD

#### NEW QUESTION 102

Your network contains an Active Directory domain. The domain contains a new file server named

Server1 that runs a Server Core installation of Windows Server 2016.

Server1 has an ReFS-formatted volume D: and NTFS-formatted volume E: The volumes do not contain any data.

You install the Data Deduplication role service on Server1.

You need to implement Data Deduplication for volumes on D: and E:.

Solution: From Windows PowerShell, you run Format-Volume E: -FileSystem ReFS and Enable- DeDupVolume -Volume D:,E:.

Does this meet the goal?

- A. Yes
- B. No

**Answer:** A

**Explanation:**

References: <https://docs.microsoft.com/en-us/windows-server/storage/data-deduplication/understand>

#### NEW QUESTION 104

Your network contains an Active Directory domain. The domain contains a new file server named Server1 that runs a Server Core installation of Windows Server 2016.

Server1 has an ReFS-formatted volume D: and NTFS-formatted volume E: The volumes do not contain any data.

You install the Data Deduplication role service on Server1.



You need to implement Data Deduplication for volumes on D: and E:.

Solution: From Windows PowerShell, you run Enable-DeDupVolume -Volume D:,E:. Does this meet the goal?

- A. Yes
- B. No

**Answer: B**

#### NEW QUESTION 106

##### HOTSPOT

You deploy a new Hyper-V host named Server1 that runs Windows Server 2016. You implement receive side scaling (RSS) on Server1.

The chipset on Server1 does not support NetDMA.

All of the equipment on your network supports 10-Gbps connectivity. On Server1, you deploy a virtual machine named VM1.

You configure VM1 to aggregate all of the Windows and non-Windows tog files for all of the servers on the network.

VM1 has four virtual processors.

You discover that VM1 drops packets.

Which two options should you run? To answer, select the appropriate options in the answer area.

### Answer Area

First action:

	▼
Enable TCP Chimney Offload on Server1.	
Enable single root I/O virtualization (SR-IOV) on VM1.	
Enable virtual machine queue (VMQ) on Server1 and VM1.	

Second action:

	▼
Enable virtual TCP Chimney Offload on VM1.	
Enable virtual Receive-side Scalling (vRSS) on VM1.	
Enable single root I/O virtualization (SR-IOV) on Server1.	

- A. Mastered
- B. Not Mastered

**Answer: A**

**Explanation:**

### Answer Area

First action:

	▼
Enable TCP Chimney Offload on Server1.	
Enable single root I/O virtualization (SR-IOV) on VM1.	
Enable virtual machine queue (VMQ) on Server1 and VM1.	

Second action:

	▼
Enable virtual TCP Chimney Offload on VM1.	
Enable virtual Receive-side Scalling (vRSS) on VM1.	
Enable single root I/O virtualization (SR-IOV) on Server1.	

#### NEW QUESTION 110

##### HOTSPOT

You have a Hyper-V host named Server1 that runs Windows Server 2016. Server1 has a virtual disk file named Disk1.vhdx that contains an installation of Windows Server 2016.

You create a virtual disk file named Disk2.vhdx that is configured as shown in the following exhibit.

```

>_ Administrator: Windows PowerShell

PS C:\> Get-VHD -Path C:\Folder1\Disk2.vhdx

ComputerName      : SERVER1
Path              : c:\folder1\disk2.vhdx
VhdFormat         : VHDX
VhdType           : Differencing
FileSize          : 4194304
Size              : 107374182400
MinimumSize       :
LogicalSelectorSize : 512
PhysicalSelectorSize : 4096
BlockSize         : 2097152
ParentPath        : C:\Folder1\Disk1.vhdx
DiskIdentifier     : 6D447006-DE3B-470A-838A-25B064ABEF39
FragmentationPercentage :
Alignment         : 1
Attached          : False
DiskNumber        :
Number            :

PS C:\>
  
```

Use the drop-down menus to select the answer choice that completes each statement based on the information presented in the graphic.

### Answer Area

When you move Disk1.vhdx to C:\Folder2, you will be able to use Disk2.vhdx only after you run [answer choice].

▼
Merge-VHD
Optimize-VHD
Optimize-VHDSets
Set-VHD
Test-VHD

Before you can copy files directly into Disk2.vhdx, you must first run [answer choice].

▼
Merge-VHD
Mount-VHD
Optimize-VHD
Resize-VHD
Set-VHD

- A. Mastered
- B. Not Mastered

**Answer:** A

**Explanation:**



### Answer Area

When you move Disk1.vhdx to C:\Folder2, you will be able to use Disk2.vhdx only after you run [answer choice].

▼

Merge-VHD
Optimize-VHD
Optimize-VHDSets
Set-VHD
Test-VHD

Before you can copy files directly into Disk2.vhdx, you must first run [answer choice].

▼

Merge-VHD
Mount-VHD
Optimize-VHD
Resize-VHD
Set-VHD

#### NEW QUESTION 115

You have a server named Server1 that runs Windows Server 2016. The disks on Server1 are configured as shown in the following table.

Volume	Type	File System	Capacity
C:	Attached locally	NTFS	150 GB
D:	Attached locally	exFAT	100 GB
E:	Attached locally	NTFS	20 GB
F:	Attached locally	ReFS	1 TB
G:	iSCSI LUN	NTFS	2 TB

Windows Server 2016 is installed in C:\Windows.

On which two volumes can you enable data deduplication? Each correct answer presents a complete solution.

- A. C:
- B. D:
- C. E:
- D. F:
- E. G:

**Answer:** CE

#### NEW QUESTION 120

You have two servers named Server1 and Server2 that run Windows Server 2016.

You plan to implement Storage Replica to replicate the contents of volumes on Server1 to Server2. You need to ensure that the replication traffic between the servers is limited to a maximum of 100 Mbps.

Which cmdlet should you run?

- A. New-NetQosPolicy
- B. Set-NetworkController
- C. New-NetTransportFilter
- D. New-StorageQosPolicy

**Answer:** A

**Explanation:**

References: [https://technet.microsoft.com/en-us/library/hh967471\(v=wps.630\).aspx](https://technet.microsoft.com/en-us/library/hh967471(v=wps.630).aspx)

#### NEW QUESTION 125

You have a Hyper-V host named Server1 that runs Windows Server 2016. Server1 hosts a virtual machine.

You need to provide VM1 with direct access to a graphics processing unit (GPU) on Server1. What should you do first?



- A. On VM1, install the QWAVE Windows Audio Video Experience (qWave) feature.
- B. Dismount the display adapter on Server1.
- C. In the settings of VM1, add a RemoteFX 3D Video Adapter.
- D. Disable the display adapter device on Server1.

**Answer:** D

**Explanation:**

Before the physical device is allowed to be passed through to the VM, the device must be disabled on the host system. The physical device must be accessible/available exclusively to the VM only. References:  
Introduction to Windows Server 2016 Hyper-V DiscreteDevice Assignment, page 5 <https://lenovopress.com/lp0088.pdf>

**NEW QUESTION 129**

**DRAG DROP**

You install a new Nano Server named Nano1. Nano1 is a member of a workgroup and has an IP address of 192.168.1.10.

You have a server named Server1 that runs Windows Server 2016.

From Server1, you need to establish a Windows PowerShell session to Nano1.

How should you complete the PowerShell script? To answer, drag the appropriate cmdlets to the correct targets. Each cmdlet may be used once, more than once, or not at all. You may need to drag the split bar between panes or scroll to view content.

Cmdlets	Answer Area
Enable-PSRemoting	\$ip = "192.168.1.10"
Enter-PSSession	\$user = "Administrator"
Set-Item	WSMan:\localhost\Client\TrustedHosts "192.168.1.10"
Set-ItemProperty	-ComputerName \$ip -Credential \$user
Set-LocalUser	

- A. Mastered
- B. Not Mastered

**Answer:** A

**Explanation:**

How to access Nano Server

Because Nano Server does not support a local session, it must be accessed remotely. References: [https://msdn.microsoft.com/en-us/library/mt708805\(v=vs.85\).aspx](https://msdn.microsoft.com/en-us/library/mt708805(v=vs.85).aspx)

**NEW QUESTION 133**

**DRAG DROP**

You are preparing an image of Windows Server 2016.

The image is missing the driver for a network adapter that is required in your environment. You need to ensure that the image contains the network adapter driver.

Which three cmdlets should you use in sequence? To answer, move the appropriate cmdlets from the list of cmdlets to the answer area and arrange them in the correct order.

**Cmdlets**

- Mount-WindowsImage
- Add-WindowsDriver
- Get-WindowsImage
- Save-WindowsImage
- Add-WindowsFeature
- Dismount-WindowsImage
- Optimize-WindowsImage

**Answer Area**

- 1
- 2
- 3

- A. Mastered  
B. Not Mastered

**Answer:** A

**Explanation:**

**Cmdlets**

- Mount-WindowsImage
- Get-WindowsImage
- Save-WindowsImage
- Add-WindowsFeature

**Answer Area**

- 1

Add-WindowsDriver
- 2

Optimize-WindowsImage
- 3

Dismount-WindowsImage

**NEW QUESTION 138**

Note: This question is part of a series of questions that use the same or similar answer choices. An answer choice may be correct for more than one question in the series. Each question is independent of the other questions in this series. Information and details provided in a question apply only to that question.

You have two servers named Server1 and Server2 that run Windows Server 2016. Server1 and Server2 have the Hyper-V server role installed. An iSCSI SAN connects to the network. You create a LUN on the SAN and configure both servers to connect to the iSCSI target. You create a failover cluster and add Server1 and Server2 to the cluster. You connect both servers to the iSCSI target and format the shared storage. You need to add the shared storage to the cluster. The solution must ensure that virtual machines running on both nodes can access the shared storage simultaneously.

Which tool should you use?

- A. the clussvc.exe command
- B. the cluster.exe command
- C. the Computer Management snap-in
- D. the configurehyperv.exe command
- E. the Disk Management snap-in
- F. the Failover Cluster Manager snap-in
- G. the Hyper-V Manager snap-in
- H. the Server Manager app

**Answer:** F

**Explanation:**

References:

[https://technet.microsoft.com/en-us/library/jj612868\(v=ws.11\).aspx](https://technet.microsoft.com/en-us/library/jj612868(v=ws.11).aspx)

#### NEW QUESTION 141

HOTSPOT

Your network contains an Active Directory forest named contoso.com. You need to add a new domain named fabrikam.com to the forest. What command should you run? To answer, select the appropriate options in the answer area.

### Answer Area

<div><div>▼</div><div>Install-ADDSDomain</div><div>Install-ADDSDomainControler</div><div>Install-ADDSEForest</div></div>	-DomainType	<div><div>▼</div><div>TreeDomain</div><div>ChildDomain</div></div>
--	-------------	--

`-InstallDns:Strue -NewDomainName fabrikam.com -ParentDomainName contoso.com`

- A. Mastered
- B. Not Mastered

**Answer:** A

**Explanation:**

### Answer Area

<div><div>▼</div><div>Install-ADDSDomain</div><div>Install-ADDSDomainControler</div><div>Install-ADDSEForest</div></div>	-DomainType	<div><div>▼</div><div>TreeDomain</div><div>ChildDomain</div></div>
--	-------------	--

`-InstallDns:Strue -NewDomainName fabrikam.com -ParentDomainName contoso.com`

Explanation:

References:

[https://technet.microsoft.com/en-us/library/hh974722\(v=wps.630\).aspx](https://technet.microsoft.com/en-us/library/hh974722(v=wps.630).aspx)

#### NEW QUESTION 146

You have a Hyper-V host named Server1 that runs Windows Server 2016. The host has two virtual machines (VMs) named VM1 and VM2. On the Hyper-V host, you create two virtual disks named Disk1 and Disk2. You plan to create a test environment for Storage Spaces Direct. You need to configure the VMs to connect to the virtual disks. What should you use?

- A. An iSCSI target
- B. A virtual SCSI controller
- C. A virtual fibre channel adapter
- D. A virtual IDE controller

**Answer:** B

**Explanation:**

References:

<https://blogs.msdn.microsoft.com/clustering/2015/05/27/testing-storage-spaces-direct-using-windows-server-2016-virtual-machines/>



#### NEW QUESTION 148

You have a server named Server1.

You enable BitLocker Drive Encryption (BitLocker) on Server1.

You need to change the password for the Trusted Platform Module (TPM) chip. What should you run on Server1?

- A. Initialize-Tpm
- B. Import-TpmOwnerAuth
- C. repair-bde.exe
- D. bdehdcfg.exe

**Answer: B**

#### NEW QUESTION 149

DRAG DROP

You have a Hyper-V host named Server1 that runs Windows Server 2016.

The installation source files for Windows Server 2016 are located in D:\Source. You need to create a Nano Server image.

Which cmdlets should you run? To answer, drag the appropriate cmdlets to the correct targets. Each cmdlet may be used once, more than once, or not at all. You may need to drag the split bar between panes or scroll to view content.

Cmdlets		Answer Area
Add-WindowsImage	<div> <div></div> <div></div> <div></div> <div></div> <div></div> </div>	First cmdlet to run: <input type="text" value="cmdlet"/>
Import-Module		Second cmdlet to run: <input type="text" value="cmdlet"/>
Install-Module		
New-NanoServerImage		
New-WindowsCustomImage		

- A. Mastered
- B. Not Mastered

**Answer: A**

**Explanation:**

Step 1: Import Module

Import-Module .\NanoServerImageGenerator.psm1 Step 2: New New-NanoServerImage

Create Nano Server Image VHDX

New-NanoServerImage -MediaPath .\Files -BasePath.\Base -TargetPath .\Images\NanoVMGA.vhdx References: <https://technet.microsoft.com/en-us/windows-server-docs/get-started/deploy-nano-server>

#### NEW QUESTION 154

HOTSPOT

Your network contains an Active Directory domain named contoso.com. The domain contains two servers named Server1 and Server2 that run Windows Server 2016.

Server1 has Microsoft System Center 2016 Virtual Machine Manager (VMM) installed. Server2 has IP Address Management (IPAM) installed.

You create a domain user named User1.

You need to integrate IPAM and VMM. VMM must use the account of User1 to manage IPAM. The solution must use the principle of least privilege.

What should you do on each server? To answer, select the appropriate options in the answer area.

## Answer Area

On Server1:

	▼
Create a Run as Account that uses User1	
Add User1 to the Fabric Administrator user role	
Add User1 to the Remote Management Users group	

On Server2:

	▼
Add User1 to IPAM Administrator Role	
Add User1 to IPAM ASM Administrator Role	
Add User1 to IPAM MSM Administrator Role	

- A. Mastered
- B. Not Mastered

**Answer:** A

**Explanation:**

On Server1: Create a Run As Account that uses User1.

On Server2: Add User1 to IPAM ASM Administrator Role. [https://technet.microsoft.com/en-us/library/dn783349\(v=ws.11\).aspx](https://technet.microsoft.com/en-us/library/dn783349(v=ws.11).aspx) [https://technet.microsoft.com/en-us/library/jj878348\(v=ws.11\).aspx](https://technet.microsoft.com/en-us/library/jj878348(v=ws.11).aspx)

### NEW QUESTION 159

HOTSPOT

You network contains an Active Directory named contoso.com. The domain contains two servers named Server1 and Server2 that run Windows Server 2016. Server1 has IP Address Management (IPAM) installed. Server2 has the DHCP Server role installed. The IPAM server retrieves data from Server2. The domain has two users named User1 and User2 and a group named Group1. User1 is the only member of Group1. Server1 has one IPAM access policy. You edit the access policy as shown in the Policy exhibit. (Click the Exhibit button.)

**Edit Access Policy**

Show All

**User Settings**

Click Add to add a user

\* User alias: CONTOSO\Group1 Add

Description:

**Access Settings**

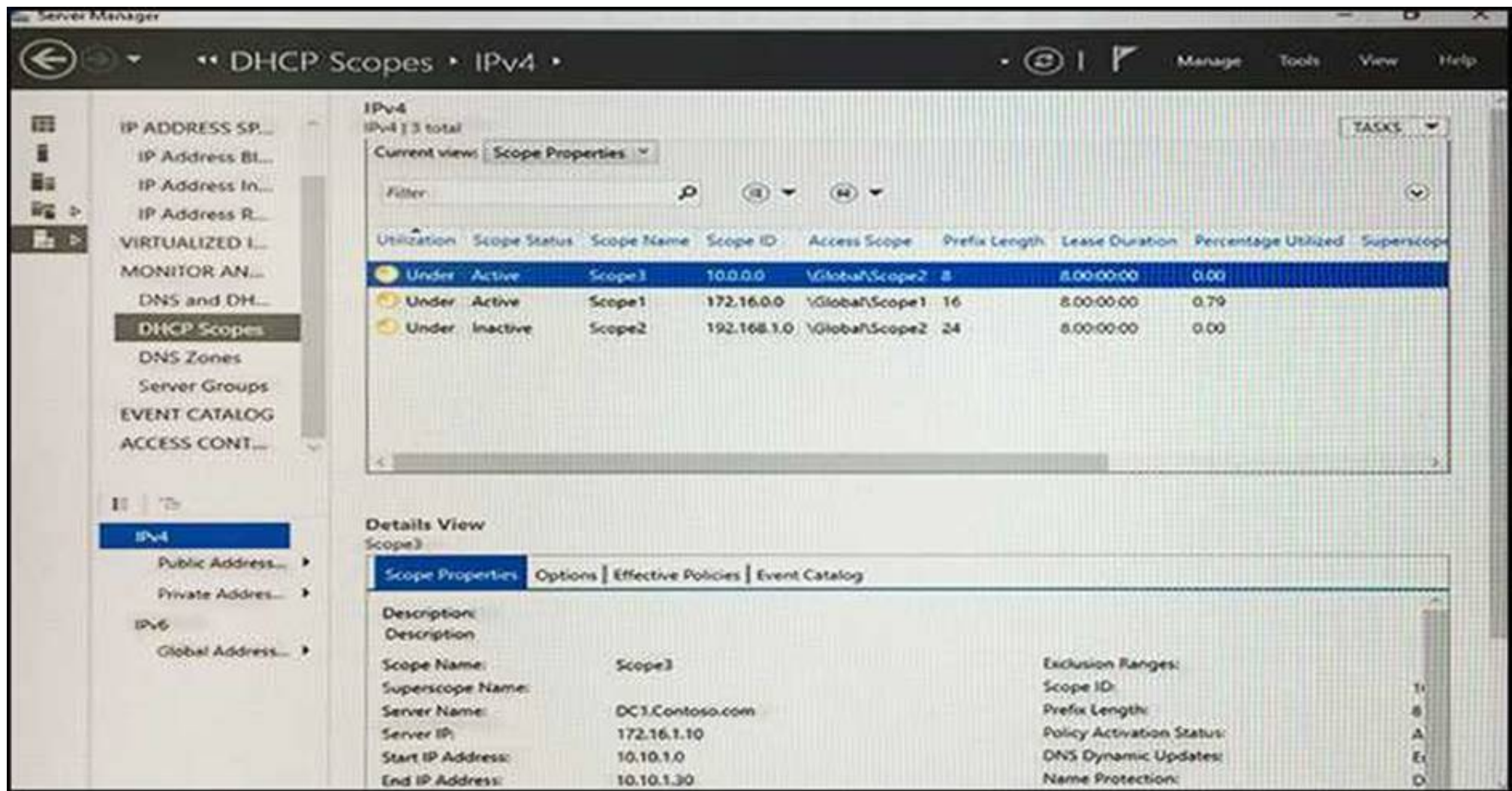
Specify the access settings for the access policy:

Role	Access Scope
IPAM DHCP Scope Administra...	\Global\Scope2

OK Cancel Apply

The DHCP scopes are configured as shown in the Scopes Exhibit. (Click the Exhibit button.)





For each of the following statements, select Yes if the statement is true. Otherwise, select No.

## Answer Area

Statements	Yes	No
User1 can modify the description of Scope1.	<input type="radio"/>	<input type="radio"/>
User2 can modify the description of Scope1.	<input type="radio"/>	<input type="radio"/>
User1 can modify the description of Scope2.	<input type="radio"/>	<input type="radio"/>

- A. Mastered  
B. Not Mastered

Answer: A

Explanation:

[https://technet.microsoft.com/en-us/library/dn268500\(v=ws.11\).aspx](https://technet.microsoft.com/en-us/library/dn268500(v=ws.11).aspx)

### NEW QUESTION 161

You have two servers named Server1 and Server2 that run Windows Server 2016. You plan to implement Storage Replica to replicate the contents of volumes on Server1 to Server2. You need to ensure that the replication traffic between the servers is limited to a maximum of 100 Mbps. Which cmdlet should you run?

- A. Set-NetUDPSetting  
B. New-StorageQosPolicy  
C. Set-SmbBandwidthLimit  
D. Set-NetTCPSetting

Answer: C

### NEW QUESTION 166

You have a Hyper-V host named Server1 that runs Windows Server 2016. Server1 hosts a virtual machine named VM1. VM1 is in a workgroup. VM1 is currently in a running state. You need to create 10 copies of VM1 on Server1 in the least amount of time possible. Which cmdlets should you use?



- A. Stop-VM, and then Import-VM
- B. Export-VM, and then Import-VM
- C. Checkpoint-VM, and then New-VM
- D. Copy-VMFile, and then New-VM

**Answer:** B

**NEW QUESTION 170**

You deploy two servers that run Windows Server 2016. You install the Failover Clustering feature on both servers. You need to create a workgroup cluster. What should you do?

- A. Configure both of the server to be in a workgroup named Workgrou
- B. Configure the Cluster Service to log on as Network Servic
- C. Run the New-Cluster cmdlet and specify an administrative access point of None.
- D. Create matching local administrative accounts on both of the server
- E. Assign the same primary DNS suffix to both of the server
- F. Run the New-Cluster cmdlet and specify an administrative access point of DNS.
- G. Configure both of the server to be in a workgroup named Workgrou
- H. Configure the Cluster Service to log on as Network Servic
- I. Run the New-Cluster cmdlet and specify an administrative access point of DNS.
- J. Create matching local administrative accounts on both of the server
- K. Assign the same primary DNS suffix to both of the server
- L. Run the New-Cluster cmdlet and specify an administrative access point of None

**Answer:** B

**Explanation:**

References:

<https://rlevchenko.com/2015/09/07/workgroup-and-multi-domain-clusters-in-windows-server-2016/>

**NEW QUESTION 173**

DRAG DROP

You have a file server named Server1 that runs Windows Server 2016.

You need to create a report that lists all of the share permissions assigned to the security principals on Server1.

How should you complete the command? To answer, drag the appropriate cmdlets to the correct targets. Each cmdlet may be used once, more than once, or not at all. You may need to drag the split bar between panes or scroll to view content.

Cmdlets

Get-Acl

Get-SmbClientConfiguration

Get-SmbShare

Set-SmbPathAcl

Get-Credential

Get-SmbDelegation

Get-SmbShareAccess

Answer Area

Cmdlet

Cmdlet

- A. Mastered
- B. Not Mastered

**Answer:** A

**Explanation:**

## Cmdlets

- Get-Acl
- Get-SmbClientConfiguration
- Get-SmbShare
- Set-SmbPathAcl
- Get-Credential
- Get-SmbDelegation
- Get-SmbShareAccess

## Answer Area

Get-SmbShare | Get-SmbShareAccess

### NEW QUESTION 174

You want to capture the state, data, and hardware configuration of a running virtual machine.

Which checkpoint can be very useful if you need to recreate a specific state or condition of a running virtual machine so that you can troubleshoot a problem?

- A. Production
- B. Standard

**Answer:** B

#### Explanation:

Standard checkpoints capture the state, data, and hardware configuration of a running virtual machine and are intended for use in development and test scenarios.

### NEW QUESTION 175

Which container type is described below:

Provides application isolation through process and namespace isolation technology.

This container shares a kernel with the container host and all containers running on the host.

- A. Hyper-V Container
- B. Windows Server Container

**Answer:** B

### NEW QUESTION 177

Your IT company is constantly changing, with new users coming and going throughout the year.

One of your common tasks requires the deletion of user accounts for employees who have left the company.

Which command can be used to delete user accounts?

- A. LDIFDE
- B. Dsmod
- C. Dspromo
- D. Netsh

**Answer:** A

### NEW QUESTION 182

You have decided to install Windows Server 2016 by choosing the Service Core Installation option. If you want to install, configure or uninstall server roles remotely, what tool would you use?

- A. Any of these
- B. Windows PowerShell
- C. Remote Server Administration Tools (RSAT)
- D. Server Manager

**Answer:** A

### NEW QUESTION 187

You plan to install a Nano Server on a physical server named Nano1. Nano1 will host several virtual machines that will use live migration.

Which package should you install on Nano1?

- A. Microsoft-NanoServer-SecureStartup-Package

- B. Microsoft-NanoServer-ShieldedVM-Package
- C. Microsoft-NanoServer-Compute-Package
- D. Microsoft-NanoServer-FailoverCluster-Package
- E. Microsoft-NanoServer-Storage –Package

**Answer:** C

**NEW QUESTION 189**

You have a Hyper-V failover cluster that contains three nodes. Virtual machines are distributed evenly across the cluster nodes.

You need to ensure that if a node loses connectivity from the other nodes, the virtual machines on the node will be transitioned to one of the remaining nodes after one minute.

Which settings should you modify?

- A. QuarantineDuration and QuarantineThreshold
- B. SameSubnetDelay and CrossSubnetDelay
- C. QuorumArbitrationTimeMax and RequestReplyTimeout
- D. ResiliencyPeriod and ResiliencyLevel

**Answer:** C

**Explanation:**

References: [https://msdn.microsoft.com/en-us/library/aa369123\(v=vs.85\).aspx](https://msdn.microsoft.com/en-us/library/aa369123(v=vs.85).aspx) [https://msdn.microsoft.com/en-us/library/bb394696\(v=vs.85\).aspx](https://msdn.microsoft.com/en-us/library/bb394696(v=vs.85).aspx)

**NEW QUESTION 194**

You have a Hyper-V host named Server1 that runs Windows Server 2016. Server1 hosts a virtual machine named VM1 that runs Windows Server 2016. You install the Hyper-V server role on VM1.

You need to ensure that the virtual machines hosted on VM1 can communicate with the virtual machines hosted on Server1.

What should you do?

- A. On Server1, run the Set-VmNetworkAdapterIsolation cmdlet and specify the –MultiTenantStack Off parameter.
- B. On VM1, run the Set-VMNetworkAdapter cmdlet and specify the –MacAddressSpoofing Off parameter.
- C. On VM1, run the Set-VmNetworkAdapterIsolation cmdlet and specify the –MultiTenantStack On parameter.
- D. On Server1, run the Set-VMNetworkAdapter cmdlet and specify the –MacAddressSpoofing On parameter.

**Answer:** C

**Explanation:**

References: <https://docs.microsoft.com/en-us/powershell/module/hyper-v/set-vmnetworkadapterisolation?view=win10-ps>

**NEW QUESTION 196**

DRAG DROP

Your network contains an Active Directory domain named contoso.com. The domain contains a server named Server1 that runs Windows Server 2016.

Server1 allows inbound connectivity from all computers in the contoso.com domain. Server1 has an IP address of 192.168.0.10.

Server1 hosts a Windows container named Container1. Container1 hosts a website that is accessible on port 80.

You need to ensure that you can use the Docker(?) client to manage Container1 from any computer in the domain.

Which four cmdlets should you run in sequence? To answer, move the appropriate cmdlets from the list of cmdlets to the answer area and arrange them in the correct order.

**Actions**

**Answer Area**

Restart-Service docker

New-ContainerNetwork- Name nat1 –  
Mode NAT- SubnetPrefix 192.168.0.0/24 –  
GatewatAddress 192.168.0.10

Add-Content  
'c:\programdata\docker\config\daemon.json'  
'{"hosts": ["tcp://127.0.0.1:80", "npip: //"]}'

Add-Content  
'c:\programdata\docker\config\daemon.json'  
'{"hosts": ["tcp://0.0.0.0:2375", "npip: //"]}]

New-Item-Type File  
c:\programData\docker\confing\daemon.json



- A. Mastered
- B. Not Mastered

**Answer:** A

**Explanation:**

New-Item-Type File  
c:\programData\docker\config\daemon.json

Add-Content  
'c:\programdata\docker\config\daemon.json'  
'{"hosts": [{"tcp://0.0.0.0:2375", "npip:/" } ]}'

Restart-Service docker

New-ContainerNetwork- Name nat1 –  
Mode NAT- SubnetPrefix 192.168.0.0/24 –  
GatewatAddress 192.168.0.10

#### NEW QUESTION 200

DRAG DROP

You have a server named Server1 that runs Windows Server 2016. On Server1, you create a Nano Server image named Disk1.vhdx. You need to start Server1 by using Disk1.vhdx.

Which three actions should you perform in sequence? To answer, move the appropriate actions from the list of actions to the answer area and arrange them in the correct order.

#### Actions

Restart Server1.

Run the bcdboot.exe command.

Run the bootcfg.exe command.

Run the **Edit-NanoServerImage** cmdlet.

Mark a partition as active.

Mount Disk1.vhdx.

#### Answer Area



- A. Mastered
- B. Not Mastered

**Answer:** A

**Explanation:**

## Actions

Restart Server1.

Run the **bcdboot.exe** command.

Run the **bootcfg.exe** command.

Run the **Edit-NanoServerImage** cmdlet.

Mark a partition as active.

Mount Disk1.vhdx.

## Answer Area

Mount Disk1.vhdx.

Run the **bootcfg.exe** command.

Restart Server1.



### NEW QUESTION 202

Note: This question is part of a series of questions that use the same or similar answer choices. An answer choice may be correct for more than one question in the series. Each question is independent of the other questions in this series. Information and details provided in a question apply only to that question.

You have a Hyper-V host named Server1 that runs Windows Server 2016. Server1 has a virtual machine that uses a virtual hard disk (VHD) named disk1.vhdx.

You receive the following warning message from Event Viewer: "One or more virtual hard disks have a physical sector size that is smaller than the physical sector size of the storage on which the virtual hard disk file is located."

You need to resolve the problem that causes the warning message. What should you run?

- A. the Mount-VHD cmdlet
- B. the Diskpart command
- C. the Set-VHD cmdlet
- D. the Set-VM cmdlet
- E. the Set-VMHost cmdlet
- F. the Set-VMProcessor cmdlet
- G. the Install-WindowsFeature cmdlet
- H. the Optimize-VHD cmdlet

**Answer:** C

#### Explanation:

References:

[https://technet.microsoft.com/en-us/library/hh848561\(v=wps.630\).aspx](https://technet.microsoft.com/en-us/library/hh848561(v=wps.630).aspx)

### NEW QUESTION 204

#### HOTSPOT

You are deploying Network Load Balancing (NLB) to three web servers named Server1, Server2, and Server3. The web servers have the following IP addresses:

Server1: 192.168.2.101

Server2: 192.168.2.102 Server3:192.168.2.103

The IP address used by NLB is 192.168.2.120.

Which IP address or addresses will be configured on each server? To answer, select the appropriate options in the answer area.

## Answer Area

Server1:

	▼
192.168.2.101 only	
192.168.2.120 only	
192.168.2.101 and 192.168.2.120 only	
192.168.2.101, 192.168.2.102, and 192.168.2.103 only	
192.168.2.101, 192.168.2.102, 192.168.2.103 and 192.168.2.120	

Server2:

	▼
192.168.2.102 only	
192.168.2.120 only	
192.168.2.102 and 192.168.2.120 only	
192.168.2.101, 192.168.2.102, and 192.168.2.103 only	
192.168.2.101, 192.168.2.102, 192.168.2.103 and 192.168.2.120	

Server3:

	▼
192.168.2.103 only	
192.168.2.120 only	
192.168.2.103 and 192.168.2.120 only	
192.168.2.101, 192.168.2.102, and 192.168.2.103 only	
192.168.2.101, 192.168.2.102, 192.168.2.103 and 192.168.2.120	

- A. Mastered  
B. Not Mastered

Answer: A

Explanation:

## Answer Area

Server1:

	▼
192.168.2.101 only	
192.168.2.120 only	
<b>192.168.2.101 and 192.168.2.120 only</b>	
192.168.2.101, 192.168.2.102, and 192.168.2.103 only	
192.168.2.101, 192.168.2.102, 192.168.2.103 and 192.168.2.120	

Server2:

	▼
192.168.2.102 only	
192.168.2.120 only	
<b>192.168.2.102 and 192.168.2.120 only</b>	
192.168.2.101, 192.168.2.102, and 192.168.2.103 only	
192.168.2.101, 192.168.2.102, 192.168.2.103 and 192.168.2.120	

Server3:

	▼
192.168.2.103 only	
192.168.2.120 only	
<b>192.168.2.103 and 192.168.2.120 only</b>	
192.168.2.101, 192.168.2.102, and 192.168.2.103 only	
192.168.2.101, 192.168.2.102, 192.168.2.103 and 192.168.2.120	



**NEW QUESTION 208**

**HOTSPOT**

You plan to deploy three servers named Server1, Server2, and Server3 that will run Windows Server 2016. The servers will have the following disk configurations:  
Server1 will have a C: drive of 2 TB.  
Server2 will have two disks. The C: drive will be 2 TB. The D: drive will be 1TB. D: must support file system-based compression.  
Server3 will have two disks. The C: drive will be 2 TB. The D: drive will be 1TB and must support file- system based quotas.  
Which file system can you use for each drive? To answer, select the appropriate options in the answer area.

## Answer Area

C: on all servers:

	▼
NTFS only	
ReFS only	
Either NTFS or ReFS	

D: on Server2:

	▼
NTFS only	
ReFS only	
Either NTFS or ReFS	

D: on Server3:

	▼
NTFS only	
ReFS only	
Either NTFS or ReFS	

- A. Mastered
- B. Not Mastered

**Answer:** A

**Explanation:**

## Answer Area

C: on all servers:

	▼
NTFS only	
ReFS only	
Either NTFS or ReFS	

D: on Server2:

	▼
NTFS only	
ReFS only	
Either NTFS or ReFS	

D: on Server3:

	▼
NTFS only	
ReFS only	
Either NTFS or ReFS	

**NEW QUESTION 210**

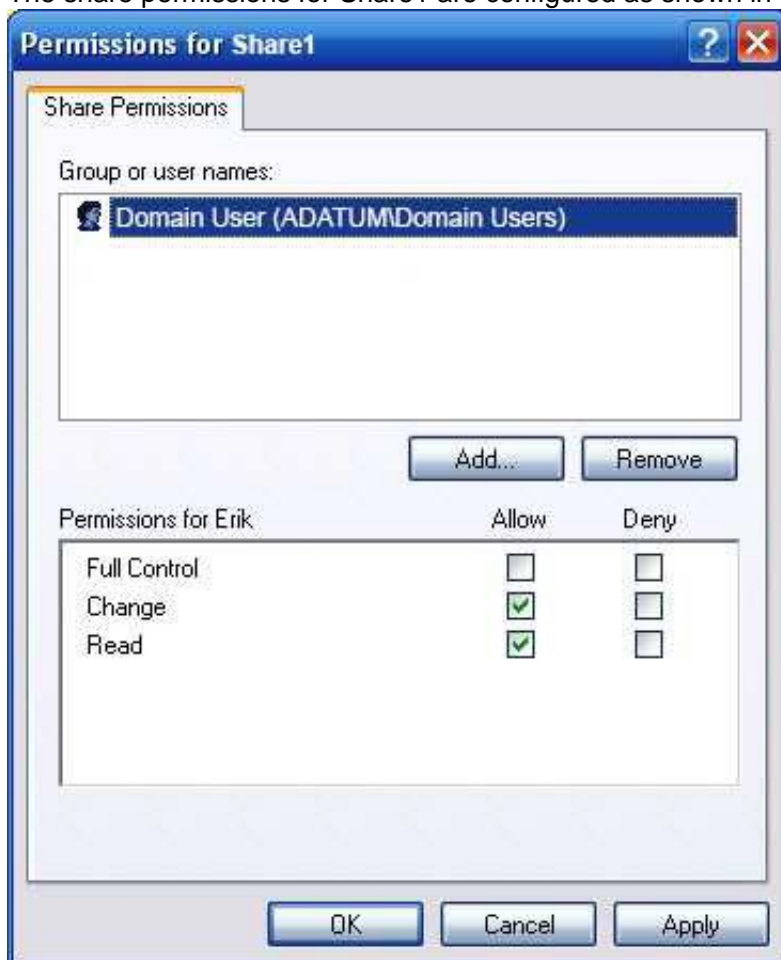
**HOTSPOT**

Your network contains an Active Directory domain named Adatum.com. The domain contains two servers named Server1 and Server2 that run Windows Server 2016. The domain contains three users named User1, User2, and User3.  
Server1 has a share named Share1 that has the following configurations.

```

PresetPathAcl      : System.Security.AccessControl.DirectorySecurity
ShareState         : Online
AvailabilityType   : NonClustered
ShareType          : FileSystemDirectory
FolderEnumerationMode : AccessBased
CachingMode        : Manual
SmbInstance        : Default
CATimeout          : 0
ConcurrentUserLimit : 0
ContinuouslyAvailable : False
CurrentUsers        : 0
Description         :
EncryptData         : False
Name               : Share1
Path               : C:\Shares\Share1
Scoped              : False
ScopeName           : *
SecurityDescriptor : O:BAG:DUD:(A;OICI;FA;;;WD)
ShadowCopy          : False
Special             : False
Temporary           : False
Volume              : \\?\Volume{d80578cf-0000-0000-0000-501f00000000}\
PSComputerName      :
CimClass            : ROOT\Microsoft\Windows\SMB:MSFT_SmsShare
CimInstanceProperties : {AvailabilityType, CachingMode, CATimeout, ConcurrentUserLimit...}
CimSystemProperties : Microsoft.Management.Infrastructure.CimSystemProperties
  
```

The share permissions for Share1 are configured as shown in the Share1 exhibit. (Click the Exhibit button.)



Share1 contains a file named File1.txt. The Advanced Security Settings for File1.txt are configured as shown in the File1.txt exhibit. (Click the Exhibit button.)

Advanced Security Settings for File1.txt

Name: C:\Shares\Share1\File1.txt

Owner: Administrators (SERVER1\Administrators)

Permissions

Share

Auditing

Effective Access

For additional information, double-click a permission entry. To modify a permission entry, select the entry and click Edit (if available).

Permission entries:

	Type	Principal	Access	Inherited from
	Allow	Domain Admins (ADATUM\Domain Admins)	Full control	None
	Allow	User1 (User1@Adatum.com)	Full control	None
	Allow	User2 (User2@Adatum.com)	Read	None
	Allow	User3 (User3@Adatum.com)	Write	None

Add

Remove

View

Disable inheritance

OK

Cancel

Apply

For each of the following statement, select Yes if the statement is true. Otherwise, select No.

## Answer Area

Statement	Yes	No
When User1 navigates to \\Server1\Share1\, the user can take ownership of File1.txt.	<input type="radio"/>	<input type="radio"/>
When User2 navigates to \\Server1\Share1\, the user will see File1.txt	<input type="radio"/>	<input type="radio"/>
When User3 navigates to \\Server1\Share1\, the user will see File1.txt	<input type="radio"/>	<input type="radio"/>

- A. Mastered
- B. Not Mastered

Answer: A

Explanation:



## Answer Area

Statement	Yes	No
When User1 navigates to \\Server1\Share1\, the user can take ownership of File1.txt.	<input type="radio"/>	<input checked="" type="radio"/>
When User2 navigates to \\Server1\Share1\, the user will see File1.txt	<input checked="" type="radio"/>	<input type="radio"/>
When User3 navigates to \\Server1\Share1\, the user will see File1.txt	<input checked="" type="radio"/>	<input type="radio"/>

### NEW QUESTION 214

Note: This question is part of a series of questions that present the same scenario. Each question in the series contains a unique solution that might meet the stated goals. Some question sets might have more than one correct solution, while others might not have a correct solution.

After you answer a question in this section, you will NOT be able to return to it. As a result, these questions will not appear in the review screen.

You network contains an Active Directory domain named contoso.com.

You need to create a Nano Server image named Nano1 that will be used as a virtualization host. The Windows Server 2016 source files are located in drive D.

Solution: You run the following cmdlet.

```
New-NanoServerImage -Edition Datacenter -DeploymentType Host -Compute
-MediaPath 'D:\' -TargetPath C:\Nano1\Nano1.wim -ComputerName Nano1
-DomainName Contoso.com
```

Does this meet the goal?

- A. Yes
- B. No

**Answer: A**

### NEW QUESTION 219

Note: This question is part of a series of questions that present the same scenario. Each question in the series contains a unique solution that might meet the stated goals. Some question sets might have more than one correct solution, while others might not have a correct solution.

After you answer a question in this section, you will NOT be able to return to it. As a result, these questions will not appear in the review screen.

You have a server named Server1 that runs Windows Server 2016.

Server1 hosts a line-of-business application named App1. App1 has a memory leak that occasionally causes the application to consume an excessive amount of memory.

You need to log an event in the Application event log whenever App1 consumes more than 4 GB of memory.

Solution: You create an event trace data collector. Does this meet the goal?

- A. Yes
- B. No

**Answer: B**

### NEW QUESTION 222

Note: This question is part of a series of questions that present the same scenario. Each question in the series contains a unique solution that might meet the stated goals. Some question sets might have more than one correct solution, while others might not have a correct solution.

After you answer a question in this section, you will NOT be able to return to it. As a result, these questions will not appear in the review screen.

You are a server administrator at a company named Contoso, Ltd.

Contoso has a Windows Server 2016 Hyper-V environment configured as shown in the following table.

Hyper-V host name	Configuration	Virtual switch name
Host1	- Uses an Intel processor - Is a member of a SAN named SAN1	Switch1
Host2	- Uses an AMD processor - Has local storage only	Switch2
Host3	- Uses an Intel processor - Is a member of a SAN named SAN1	Switch1
Host4	- Uses an Intel processor - Has local storage only	Switch2

All of the virtual switches are of the external type.

You need to ensure that you can move virtual machines between the hosts without causing the virtual machines to disconnect from the network.

Solution: You implement live migration by using Host1 and Host3. Does this meet the goal?

- A. Yes
- B. No

**Answer: A**

#### NEW QUESTION 223

Note This question is part of a series of questions that use the same scenario. For your convenience, the scenario is repeated in each question. Each question presents a different goal and answer choices, but the text of the scenario is exactly the same in each question in this series.

Start of Repeated Scenario:

A company named Contoso, Ltd. has several servers that run Windows Server 2016 Contoso has a Hyper V environment that uses failover clustering and Windows Server Update Services (WSUS). The environment contains several Windows containers and several virtual machines.

The WSUS deployment contains one upstream server that is located on the company's perimeter network and several downstream servers located on the internal network. A firewall separates the upstream server from the downstream servers.

You plan to deploy a human resources application to a new server named HRServer5. HRServer5 contains a FAT32-formatted data volume.

The CIO of Contoso identifies the following requirements for the company's IT department:

- Deploy failover cluster to two new virtual machines.
- Store all application databases by using Encrypted File System (EFS).
- Ensure that each Windows container has a dedicated IP address assigned by a DHCP server
- Produce a report that lists the processor time used by all of the processes on a server named Server 1 for five hour.

Encrypt all communication between the internal network and the perimeter network, including all WSUS communications.

- Automatically load balance the virtual machines hosted in the Hyper-V cluster when processor utilization exceeds 70 percent.

End of Repeated Scenario.

You need to modify the Hyper V cluster to meet the load balancing requirement for the virtual machine. Which command should you run?

- A. network address translation (NAT)
- B. I2bridge
- C. I2tunnel
- D. transparent

**Answer: A**

#### NEW QUESTION 224

HOTSPOT

You have two Hyper-V hosts named Server1 and Server2 that run Windows Server 2016. Server1 and Server2 connect to the same network.

Server1 and Server2 have virtual switches configured as shown in the following table.

Switch name	Host	Type	VLAN ID
Switch1	Server1	External	2
Switch2	Server2	External	4
Switch3	Server2	Internal	<i>Not applicable</i>

You have nine virtual machines configured as shown in the following table.

Virtual machine name	Connected to	VLAN ID
VM1	Switch1	2
VM2	Switch1	<i>Not applicable</i>
VM3	Switch1	4
VM4	Switch2	2
VM5	Switch2	<i>Not applicable</i>
VM6	Switch2	4
VM7	Switch3	2
VM8	Switch3	<i>Not applicable</i>
VM9	Switch3	4

All of the virtual machines are configured to have IP addresses from the same network segment. The firewall on each of the virtual machines is configured to allow network connectivity.

To which virtual machines can you connect from VM1 and VM2? To answer, select the appropriate options in the answer area.

## Answer Area

Virtual machines to which you can connect from VM1:

▼

VM4 only  
VM4 and VM7  
VM2, VM4, and VM5  
None

Virtual machines to which you can connect from VM2:

▼

VM5 only  
VM1 and VM3  
VM5 and VM8  
VM5, VM7, VM8, and VM9  
None

- A. Mastered
- B. Not Mastered

Answer: A

Explanation:

## Answer Area

Virtual machines to which you can connect from VM1:

▼

VM4 only  
VM4 and VM7  
VM2, VM4, and VM5  
None

Virtual machines to which you can connect from VM2:

▼

VM5 only  
VM1 and VM3  
VM5 and VM8  
VM5, VM7, VM8, and VM9  
None

### NEW QUESTION 228

#### HOTSPOT

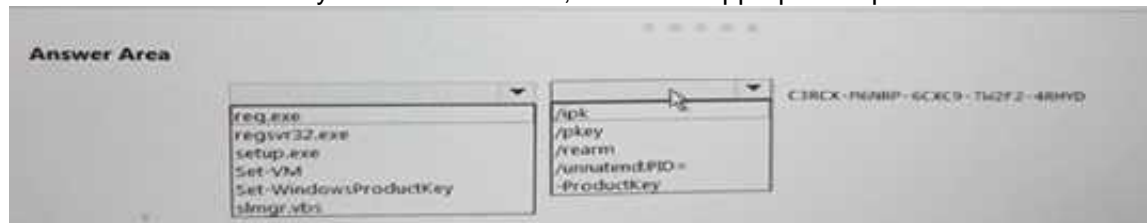
You have a Hyper-V host named Server1 that runs Windows Server 2016 Datacenter. Server1 is activated.

On Server 1, you deploy a virtual machine named VM1 that has a Server Core installation of Windows Server 2016 Standard.



You need to activate VMI try using Automatic Virtual Machine- Activation (AVMA).

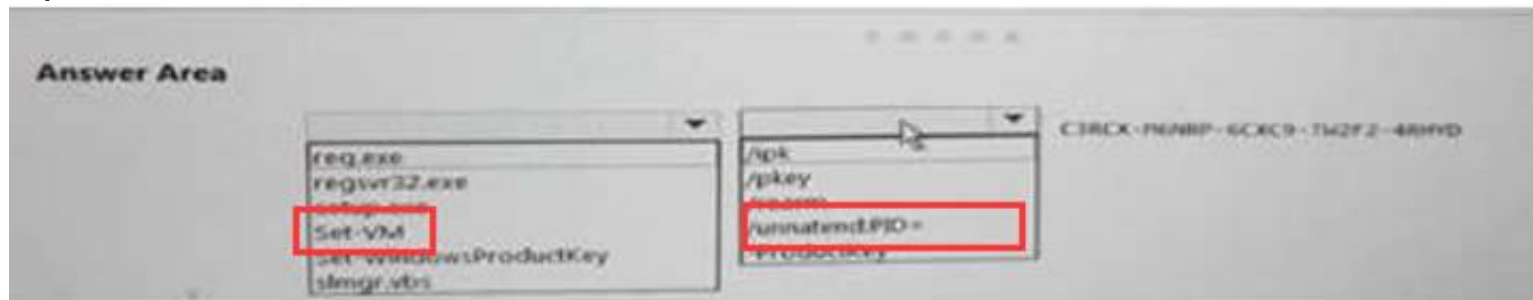
Which command should you run? To answer, select the appropriate options in the answer area. NOTE: Each correct selection is worth one point.



- A. Mastered
- B. Not Mastered

**Answer: A**

**Explanation:**



#### NEW QUESTION 229

Note: This question is part of a series questions that present the same scenario, Each question in the series contains a unique solution that might meet the stated goals. Some question sets might have more than one correct solution, while others might not have a correct solution.

After you answer a question in this section, you will NOT be able to return to it. As a result, these questions will not appear in the review screen.

You have a server named Server1 that runs Windows Server 2016. Server1 is a Docker Host.

You are creating a Docker file to build 3 Docker image.

You need to add a file named File1.txt from Server1 to, C:\folder1\ in the Docker image.

What are two possible commands that you can use to achieve the goal/ Each correct answer presents a complete solution.

NOTE: Each correct selection is worth one point.

- A. COPY file1.txt c:/folder1/
- B. copy-item file1.txt folder1\file1.txt
- C. ROBOCOPY file.txt \folder1\
- D. XCOPY file1.txt c:\folder1\
- E. ADD file1.txt /folder1/

**Answer: AE**

#### NEW QUESTION 234

You have a Windows Server 2016 fail over cluster named that contains four nodes named Server1, Server2, Server3, and Server4. Cluster1 hosts 40 virtual machines that are distributed evenly across the nodes.

Server1 and Server2 are located in a data center in Madrid. Server3 and Server4 are located in a data center in Barcelona.

You need to ensure that when you pause a node, the clustered virtual machines will always attempt to move automatically to another node in the same data center before attempting to move to a node in the other data center.

Which two actions should you perform?

Each correct answer presents part of the solution.

- A. Run the New-ClusterFaultDomain cmdlet.
- B. Configure a file share witness for each data center.
- C. Create an Active Directory site for each data center.
- D. Run the Set-Cluster FaultDomain cmdlet.
- E. Run the Add-ClusterGroup cmdlet.
- F. Change the quorum configuration of the cluster to Node Majority.

**Answer: CE**

#### NEW QUESTION 235

Your network contains an Active Directory domain.

The domain contains two Hyper-V hosts.

You plan to perform live migrations between the hosts.

You need to ensure that the live migration traffic is authenticated by using Kerberos. What should you do first?

- A. From Server Manager, install the Host Guardian Service server role on a domain controller.
- B. From Active Directory Users and Computers, add the computer accounts for both servers to the Cryptographic Operators group.
- C. From Active Directory Users and Computers, modify the Delegation properties of the computer accounts for both servers.
- D. From Server Manager, install the Host Guardian Service server role on both servers.

**Answer: C**

**Explanation:**

If you have decided to use Kerberos to authenticate live migration traffic, configure constrained delegation before you proceed to the rest of the steps.

**NEW QUESTION 237**

You have a Windows Server 2016 failover cluster named Ousted that contains three nodes named Server 1, Server 2, and Server 3. Each node hosts several virtual machines. the virtual machines are configured to fail over to another node in Ousted if the hosting node fails.

You need to ensure that if the Cluster service fails on one of the nodes, the virtual machine of that node will fail over immediately.

Which setting should you configure?

- A. failureConditionLevel
- B. QuarantineDuration
- C. Resiliency Period
- D. ResiliencyLevel

**Answer: B**

**NEW QUESTION 241**

DRAG DROP

You have a server named Server1 that runs Windows Server 2016.

You open a command prompt on Server1 and run the following commands.

```
C:\>diskpart
```

```
Microsoft DiskPart version 10.0.14393.0
```

```
Copyright (c) 1999-2013 Microsoft Corporation.
```

```
On computer: SERVER1
```

```
DISKPART> list disk
```

```
Disk ### Status Size Free Dyn Gpt
```

```
-----
```

```
Disk 0 Online 127 GB 0 B
```

```
Disk 1 Online 1800 GB 0 B
```

```
DISKPART> select disk 1
```

```
Disk 1 is now the selected disk.
```

```
DISKPART> list partition
```

```
Partition ### Type Size Offset
```

```
-----
```

```
Partition 1 Primary 1799 GB 1024 KB
```

You back up the data on Disk 1.

You plan to convert Disk 1 to a GPT disk, and then to restore the data to Disk 1.

Which four DiskPart commands should you run in sequence before you restore the data? To answer, move the appropriate commands from the list of commands to the answer area and arrange them in the correct order.

## Commands

## Answer Area

```
convert dynamic
```

```
select disk 1
```

```
format fs=ntfs
```

```
create partition logical
```

```
create partition primary
```

```
convert gpt
```

```
clean
```



- A. Mastered
- B. Not Mastered

**Answer:** A

**Explanation:**

References: <https://www.remotesoftware.com/info/convert-gpt-mbr-without-data-loss> <https://docs.microsoft.com/en-us/windows-server/administration/windows-commands/create-partition-primary>

**NEW QUESTION 243**

You have a server named Server1 that is an iSCSI target. You have a server named Server2 that runs Windows Server 2016. Server2 has an iSCSI disk named Disk1 that is hosted on Server1. Disk1 contains one volume that is assigned a drive letter of E. You need to increase the size of Disk1. What should you do?

- A. Run the Resize-IscsiVirtualDisk cmdlet and specify the -ComputerName Server2 parameter.
- B. Run the Resize-IscsiVirtualDisk cmdlet and specify the -ComputerName Server1 parameter.
- C. Run the Resize-Partition cmdlet and specify the -ComputerName Server1 parameter.
- D. Run the Resize-Partition cmdlet and specify the -ComputerName Server2 parameter.

**Answer:** B

**Explanation:**

The Resize-IscsiVirtualDisk cmdlet resizes a virtual disk either by expanding or compacting an existing virtual disk. The -ComputerName parameter specifies the computer name, or IP address, of the remote computer, if this cmdlet is run on a remote computer. If you do not specify a value for this parameter, the cmdlet uses the local computer.

**NEW QUESTION 246**

Your network contains an Active Directory domain named adatum.com. The domain contains Network load Balancing (NLB) cluster as shown in the exhibit. (Click the Exhibit button.) Which hosts will respond to requests sent to nlb.adatum.com?



The screenshot shows the Network Load Balancing Manager interface. The left pane displays a tree view with 'Network Load Balancing Cluster' expanded, showing 'NLB.Adatum.com (192.168.10.50)' and its members: 'SERVER1 (Ethernet 2)', 'SERVER2 (Ethernet 2)', and 'SERVER3 (Ethernet 2)'. The right pane shows 'Host configuration information for hosts in cluster NLB.Adatum.com' with a table:

Host (interface)	Status	Dedicated IP...	Dedic
SERVER1 (Ethernet 2)	Suspended	192.168.10.1	255.255
SERVER2 (Ethernet 2)	Converged	192.168.10.2	255.255
SERVER3 (Ethernet 2)	Stopped	192.168.10.3	255.255

Below the table is a log table:

Log En...	Date	Time	Cluster	Host	Description
0040	7/8/2017	2:07:53 AM	192.168.10...	SERVER2	End configuration change
00401	7/8/2017	2:07:53 AM	192.168.10...	SERVER1	Update 6 succeeded [double click
0042	7/8/2017	2:07:53 AM	192.168.10...	SERVER1	End configuration change

- A. Server1 only
- B. Server2 only
- C. Server1 an Server2 only
- D. Server1 ,Server2

Answer: B

#### NEW QUESTION 250

##### HOTSPOT

You deploy a new Hyper-V host named Server1 that runs Windows Server 2016. You implement receive side scaling (RSS) on Server1.

The chipset on Server1 does not support NetDMA.

All of the equipment on your network supports 10-Gbps connectivity. On Server1, you deploy a virtual machine named VM1.

You configure VM1 to aggregate all of the Windows and non-Windows log files for all of the servers on the network.

VM1 has four virtual processors.

You discover that VM1 drops packets.

Which two options should you run? To answer, select the appropriate options in the answer area.

### Answer Area

First action:

▼

Enable TCP Chimney Offload on Server1.

Enable single root I/O virtualization (SR-IOV) on VM1.

Enable virtual machine queue (VMQ) on Server1 and VM1.

Second action:

▼

Enable virtual TCP Chimney Offload on VM1.

Enable virtual Receive-side Scalling (vRSS) on VM1.

Enable single root I/O virtualization (SR-IOV) on Server1.

- A. Mastered
- B. Not Mastered

Answer: A

Explanation:

## Answer Area

First action:

	▼
Enable TCP Chimney Offload on Server1.	
Enable single root I/O virtualization (SR-IOV) on VM1.	
Enable virtual machine queue (VMQ) on Server1 and VM1.	

Second action:

	▼
Enable virtual TCP Chimney Offload on VM1.	
Enable virtual Receive-side Scalling (vRSS) on VM1.	
Enable single root I/O virtualization (SR-IOV) on Server1.	

### NEW QUESTION 254

#### HOTSPOT

You have a server named Server1 that runs Windows Servers 2016. Server1 has a storage array that contains multiple storage enclosures. The storage hardware supports enclosure awareness.

You need to implement Storage Spaces on Server1. Storage Spaces must remain available if two enclosures fail. The solution must minimize the number of enclosures required and must provide the fastest possible write performance.

Which configurations should you use? To answer, select the appropriate options in the answer area. NOTE: Each correct selection is worth one point.

## Answer Area

Resiliency type:

	▼
Dual parity	
Single parity	
Three-way mirror	
Two-way mirror	

Number of enclosures:

	▼
3	
4	
5	
6	

- A. Mastered
- B. Not Mastered

**Answer:** A

#### Explanation:

References: <https://docs.microsoft.com/en-us/windows-server/storage/storage-spaces/storage-spaces-fault-tolerance#summary>

### NEW QUESTION 256

You have a Hyper-V host named Server1 that runs Windows Server 2016. Server1 host a virtual machine named VM1. VM1 has the following settings: Nested virtualization is enabled.

Dynamic Memory is disabled. VM1 is currently running.

You need to adjust the amount of memory assigned to VM1 as quickly as possible. What should you do first?

- A. Change the memory buffer setting of VM1.
- B. Pause VM1.
- C. Shut down VM1.
- D. Enable Dynamic Memory for VM1.



Answer: D

#### NEW QUESTION 258

DRAG DROP

Your network contains an Active Directory domain named contoso.com. The domain has two clusters named FC1 and FC2. The domain contains servers that run Windows Server 2016. The Servers are configured as shown in the following table.

Server name	Processor	Memory	Cluster
Server1	Intel Xeon E3	128 GB	FC1
Server2	Intel Xeon E3	128 GB	FC1
Server3	Intel Xeon E3	256 GB	FC2
Server4	Intel Xeon E3	256 GB	FC2

Server1 hosts a highly available virtual machine named VM1.

You need to move VM1 from Server1 to Server3 by using live migration.

Which three actions should you perform in sequence? To answer, move the appropriate actions from the list of actions to the answer area and arrange them in the correct order.

Actions

Answer Area

- Add the Virtual Machine role
- Add the Hyper-V Replica Broker role to FC1 and FC2
- Remove VM1 from FC1
- Perform live migration from Failover Cluster Manager
- Perform live migration from Hyper-V Manager



- A. Mastered
- B. Not Mastered

Answer: A

Explanation:

References: <http://www.checkyourlogs.net/?p=16401>

#### NEW QUESTION 262

NOTE: This Question is a part of a series of questions that use the same or similar answer choices. An answer choice may be correct for more than one question in the series. Each question is independent of the other questions in this series. Information and details provided in a question apply only to that question.

You have a Hyper-V host named server 1 that runs Windows Server 2016 and a two-node scale-out file server cluster named Cluster1.

You need to migrate the storage on VM1 to Cluster1. Which tool should you use?

- A. the clussvc.exe command
- B. the Cluster.exe command
- C. the Computer Management snap-in
- D. the configure hyperv.exe command
- E. the Disk Management snap-in
- F. the Failover Cluster Manager snap-in
- G. the Hyper-V Manager snap-in
- H. the Server Manger app

Answer: G

#### NEW QUESTION 266


HOTSPOT

You have a Windows Server 2016 failover cluster named Cluster1. You need to implement Cloud Witness for Cluster 1.


What should you do? To answer, select the appropriate options in the answer area. NOTE: Each correct selection is worth one point.



**Answer Area****In Microsoft Azure, create:**


<b>An availability set</b>
<b>An integration account</b>
<b>A public IP address</b>
<b>A Recovery Services vault</b>
<b>A storage account</b>

**On Cluster1, run:**


<b>Add-ClusterResource</b>
<b>Add-ClusterResourceType</b>
<b>Set-ClusterParameter</b>
<b>Set-ClusterQuorum</b>

- A. Mastered  
B. Not Mastered

**Answer:** A**Explanation:**

References:

<https://www.vembu.com/blog/deploying-a-azure-cloud-witness-for-a-failover-cluster-in-windows-server-2016/><https://docs.microsoft.com/en-us/powershell/module/failoverclusters/set-clusterquorum?view=win10-ps>**NEW QUESTION 267**

Note: This question is part of a series of questions that present the same scenario. Each question in the series contains a unique solution that might meet the stated goals. Some question sets might have more than one correct solution, while others might not have a correct solution.

After you answer a question in this section, you will NOT be able to return to it. As a result, these questions will not appear in the review screen.

You have an Exchange Server 2016 organization.

Some users access the mailbox on their mobile device by using Exchange ActiveSync.

You need to prevent the users from synchronizing more than one month of email or calendar data to their device.

Solution: You deploy an Allow/Block/Quarantine policy. Does this meet the goal?

- A. Yes  
B. No

**Answer:** B**NEW QUESTION 271**

Note: This question is part of a series of questions that use the same scenario. For your convenience, the scenario is repeated in each question. Each question presents a different goal and answer choices, but the text of the scenario is exactly the same in each question in this series.

A company named Contoso, Ltd. has several servers that run Windows Server 2016. Contoso has a Hyper-V environment that uses failover clustering and Windows Server Update Services (WSUS). The environment contains several Windows containers and several virtual machines.

The WSUS deployment contains one upstream server that is located on the company's perimeter network and several downstream servers located on the internal network. A firewall separates the upstream server from the downstream servers.

You plan to deploy a human resources application to a new server named HRServer5. HRServer5 contains a FAT32-formatted data volume.

The CIO of Contoso identifies the following requirements for the company's IT department:

Which two actions should you perform to meet the encryption requirement for WSUS? Each correct answer presents part of the solution.

- A. Require SSL on the Inventory virtual directory.  
B. Require SSL on the ClientWebService virtual directory.  
C. Create a firewall rule to allow TCP port 443.  
D. Create a firewall rule to allow TCP port 8531.

**Answer:** BC

**Explanation:**

References:

<https://technet.microsoft.com/en-us/library/bb633246.aspx> [https://en.wikipedia.org/wiki/List\\_of\\_TCP\\_and\\_UDP\\_port\\_numbers](https://en.wikipedia.org/wiki/List_of_TCP_and_UDP_port_numbers)

**NEW QUESTION 275**

You have Nano Server image named Disk1.vhdx. You mount Disk1.vhdx.

You need to add a folder that contains several files to the image. Which tool or cmdlet you should use?

- A. File Explore.
- B. Add-Windows Image
- C. Nano Server Image Builder
- D. Dism

**Answer:** D

**NEW QUESTION 277**

HOTSPOT

You have a Hyper-V host named Server1 that runs Windows Server 2016 datacenter. Server1 is activated.

On Server1, you deploy a virtual machine named VM1 that has a Server Core installation of Windows Server 2016 Standard.

You need to activate VM1 by using Automatic Virtual Machine Activation (AVMA).

Which command should you run? To answer, select the appropriate options in the answer area. NOTE: Each correct selection is worth one point.

**Answer Area**

reg.exe  
regsvr32.exe  
setup.exe  
Set-VM  
Set-WindowsProductKey  
slmgr.vbs

/ipk  
/pkey  
/rearm  
/unattend:PID=  
-ProductKey

C3RCX-M6NRP-6CXC9-TW2F2-4RHYD

- A. Mastered
- B. Not Mastered

**Answer:** A

**Explanation:**

References: <https://blogs.technet.microsoft.com/askcore/2013/11/13/activating-virtual-machines-via-automatic-virtual-machine-activation-in-windows-server-2012-r2/>

**NEW QUESTION 282**

You have a server named Server1 that runs Windows Server 2016.

The server has an application named App1. App1 writes entries to the Application event log when errors are encountered. The events have IDs of either 111 or 112.

You need to restart the service whenever either of these events is logged. What should you do?

- A. From Windows PowerShell, run the Get-SMServerEvent cmdlet and pipe the output to the Start-NetEventSession cmdlet.
- B. From Event Viewer, create a subscription that has a filter for the event IDs.
- C. From Event Viewer, use the Create Basic Task Wizard for each event ID.
- D. From Windows PowerShell, run the Get-Event cmdlet and pipe the output to the Start-NetEventSession cmdlet.

**Answer:** C

**NEW QUESTION 285**

You have a server named VM1. VM1 is a virtual machine on a Hyper-V host that runs Windows Server 2016. You need to create a checkpoint that includes the virtual machine memory state of VM1.

What command should you run? To answer, select the appropriate options in the answer area.

Checkpoint-VM Get-VMSnapshot Set-VM	-Name VM1 -CheckpointType	Production ProductionOnly Standard
Checkpoint-VM Export-VMSnapshot Get-VHDSnapshot	-Name VM1 -SnapshotName Snapshot1	

- A. Mastered  
B. Not Mastered

**Answer:** A

**Explanation:**

References:

<https://docs.microsoft.com/en-us/virtualization/hyper-v-on-windows/user-guide/checkpoints>

**NEW QUESTION 288**

Your network contains an Active Directory domain named contoso.com. The domain contains two servers named Server1 and Server2 that run Windows Server 2016. Server1 and Server2 have multiple local disks attached.

You need to create a storage pool by using Storage Spaces Direct.

Which three actions should you perform in sequence? To answer, move the appropriate actions from the list of actions to the answer area and arrange them in the correct order.

Actions	Answer Area
From Server1, run the <b>New-SpacesPool</b> cmdlet.	
On Server1 and Server2, install the Failover Clustering feature.	
From Server1, run the <b>New-StorageFileServer</b> cmdlet.	
From Server1, run the <b>New-Cluster</b> cmdlet.	
On Server1 and Server2, install the Storage Replica feature.	
From Server1, run the <b>Enable-ClusterStorageSpacesDirect</b> cmdlet.	
On Server1 and Server2, install the File Server role service.	

- A. Mastered  
B. Not Mastered

**Answer:** A

**Explanation:**

References:

<https://docs.microsoft.com/en-us/windows-server/storage/storage-spaces/deploy-storage-spaces-direct>



**NEW QUESTION 291**

You have a server named Server1 that runs Windows Server 2016. Windows Defender is enabled on Server1.

Server1 runs an application named App1 that stores various types of files in Microsoft OneDrive for Business, MicrosoftOneDrive, and Microsoft SharePoint Online. App1 also interacts with several local services.

You need to prevent Windows Defender from scanning any files opened by App1. What should you do on Server1?

- A. Run the Set-ExecutionPolicy cmdlet.
- B. Run the New-AppLockerPolicy cmdlet.
- C. Modify the real-time protection settings in Windows Defender.
- D. Run the Add-MpPreference cmdlet.

**Answer: D**

**Explanation:**

References:

<https://docs.microsoft.com/en-us/windows/security/threat-protection/windows-defender-antivirus/configure-proc>

**NEW QUESTION 296**

.....

## Thank You for Trying Our Product

\* 100% Pass or Money Back

All our products come with a 90-day Money Back Guarantee.

\* One year free update

You can enjoy free update one year. 24x7 online support.

\* Trusted by Millions

We currently serve more than 30,000,000 customers.

\* Shop Securely

All transactions are protected by VeriSign!

**100% Pass Your 70-740 Exam with Our Prep Materials Via below:**

<https://www.certleader.com/70-740-dumps.html>