

## Exam Questions 70-740

Installation, Storage, and Compute with Windows Server 2016

<https://www.2passeasy.com/dumps/70-740/>



### NEW QUESTION 1

You have four servers named Server1, Server2, Server3, and Server4 that run Windows Server 2016. Server1 and Server2 have the Hyper-V server role installed. Server1 hosts a virtual machine named VM1. Server2 hosts a virtual machine named VM2. Server3 hosts the disks and the configurations of both virtual machines on an SMB share named VMShare. You use Server4 to manage Hyper-V operations on Server1 and Server2. From Server4, you attempt to perform a live migration of VM1 and VM2, but you receive the following error message: "No credentials are available in the security package". You need to ensure that you can perform the live migration of VM1 and VM2 between Server1 and Server2 while signed in to Server4. What should you do?

- A. From Active Directory Users and Computers, modify the properties of Server4. Configure the delegation settings to trust the computer for delegation of cifs.
- B. From Windows PowerShell on Server3, run the remove-SMBMultiChannelConstraint cmdlet, and then assign Server4 Full Control permissions to VMShare.
- C. From Active Directory Users and Computers, modify the properties of Server1 and Server2. Configure the Delegation settings to trust the computers for delegation of the Microsoft Virtual System Migration Service.
- D. From Active Directory Users and Computers, modify the properties of your user account
- E. Modify the Account is sensitive and cannot be delegated setting.

**Answer:** C

#### Explanation:

References: <https://docs.microsoft.com/en-us/windows-server/virtualization/hyper-v/deploy/set-up-hosts-for-live-migration-without-failover-clustering>

### NEW QUESTION 2

Note: This question is part of a series of questions that present the same scenario. Each question in the series contains a unique solution that might meet the stated goals. Some question sets might have more than one correct solution, while others might not have a correct solution. After you answer a question in this section, you will NOT be able to return to it. As a result, these questions will not appear in the review screen. You have two servers that run Windows Server 2016. You have a server named Server1 that runs Windows Server 2016. Server1 has the Hyper-V server role and Docker installed. You pull the Microsoft/iis Docker image to Server1. You need to view the available space in the Microsoft/iis Docker image. Solution: You run the following commands. `docker run --name container1 --d Microsoft/iis docker exec -i container1 cmd.exe`  
`dir`  
 Does this meet the goal?

- A. Yes
- B. No

**Answer:** A

#### Explanation:

References: [https://docs.docker.com/engine/reference/commandline/container\\_exec/#options](https://docs.docker.com/engine/reference/commandline/container_exec/#options) <https://www.windows-commandline.com/get-file-size-directory-size-command/>

### NEW QUESTION 3

#### DRAG DROP

Your network contains an Active Directory domain named adatim.com. The domain contains four member servers that run Windows Server 2016. On each server, you locally attach three disks and install the Failover Clustering feature. You need to create a volume that uses all the disks. The volume must be highly available. Which three cmdlets should you run in sequence? To answer, move the appropriate cmdlets from the list of cmdlets to the answer area and arrange them in the correct order.

#### Cmdlets

#### Answer Area

New-Cluster
Initialize-Disk
Enable-VMReplication
Enable-ClusterS2D
New-Volume
New-Partition



- A. Mastered
- B. Not Mastered

**Answer:** A

#### Explanation:

## Answer Area

➤

➤

New-Cluster

Enable-ClusterS2D

New-Volume

### NEW QUESTION 4

You have a Nano Server named Nano1.

Nano1 is configured to perform real-time protection scans by using Windows Defender.

You need to ensure that all of the files located in D:\App1\Data are excluded from the real-time protection scans.

What should you do?

- A. From the properties of D:\App1\Data folder, modify the permissions.
- B. Run the Set-MpPreference cmdlet and specify the –ExclusionPath parameter.
- C. From a command prompt, run the attrib command and specify the –s parameter.
- D. Run the Get-ChildItem cmdlet and specify the –Exclude parameter.

**Answer: B**

### NEW QUESTION 5

DRAG DROP

You install a new Nano Server named Nano1. Nano1 is a member of a workgroup and has an IP address of 192.168.1.10.

You have a server named Server1 that runs Windows Server 2016.

From Server1, you need to establish a Windows PowerShell session to Nano1.

How should you complete the PowerShell script? To answer, drag the appropriate cmdlets to the correct targets. Each cmdlet may be used once, more than once, or not at all. You may need to drag the split bar between panes or scroll to view content.

<div style="border: 2px solid green; padding: 5px; margin-bottom: 5px; text-align: center;"><b>Enable-PSRemoting</b></div> <div style="border: 2px solid green; padding: 5px; margin-bottom: 5px; text-align: center;"><b>Enter-PSSession</b></div> <div style="border: 2px solid green; padding: 5px; margin-bottom: 5px; text-align: center;"><b>Set-Item</b></div> <div style="border: 2px solid green; padding: 5px; margin-bottom: 5px; text-align: center;"><b>Set-ItemProperty</b></div> <div style="border: 2px solid green; padding: 5px; margin-bottom: 5px; text-align: center;"><b>Set-LocalUser</b></div>	<div style="margin-bottom: 20px;"> <p><b>\$ip = "192.168.1.10"</b></p> <p><b>\$user = "Administrator"</b></p> <div style="display: flex; align-items: center;"> <div style="border: 1px solid red; width: 150px; height: 25px; margin-right: 10px;"></div> <p><b>WSMan:\localhost\Client\TrustedHosts</b> <b>"192.168.1.10"</b></p> </div> <div style="display: flex; align-items: center;"> <div style="border: 1px solid red; width: 150px; height: 25px; margin-right: 10px;"></div> <p><b>-ComputerName \$ip -Credential \$user</b></p> </div> </div>
--	---

- A. Mastered
- B. Not Mastered

**Answer: A**

**Explanation:**

Enable-PSRemoting

Enter-PSSession

Set-Item

Set-ItemProperty

Set-LocalUser

\$ip = "192.168.1.10"

\$user = "Administrator"

Set-Item

WSMan:\localhost\Client\TrustedHosts  
 "192.168.1.10"

Enter-PSSession

-ComputerName \$ip -Credential \$user

### NEW QUESTION 6

#### HOTSPOT

Your network contains an Active Directory domain named contoso.com. The domain contains a DNS server named Server1 configured to use a forwarder named server2.contoso.com that has an IP address of 10.0.0.10.

You need to prevent Server1 from using root hints if the forwarder is unavailable.

What command should you run? To answer, select the appropriate options in the answer area

Suspend-DnsServerZone  
 Set-DnsServer  
 Set-DnsServerForwarder  
 Set-DnsServerRootHint

-Name "\*" -PassThru  
 -IPAddress 10.0.0.10  
 -NameServer server2.contoso.com  
 -UseRootHints. \$false

- A. Mastered
- B. Not Mastered

Answer: A

Explanation:

Suspend-DnsServerZone  
 Set-DnsServer  
 Set-DnsServerForwarder  
 Set-DnsServerRootHint

-Name "\*" -PassThru  
 -IPAddress 10.0.0.10  
 -NameServer server2.contoso.com  
 -UseRootHints. \$false

### NEW QUESTION 7

You have a Nano Server named Nano1.

Which cmdlet should you use to identify whether the DNS Server role is installed on Nano1?

- A. Find-NanoServerPackage
- B. Get-Package
- C. Find-Package
- D. Get-WindowsOptionalFeature

Answer: B

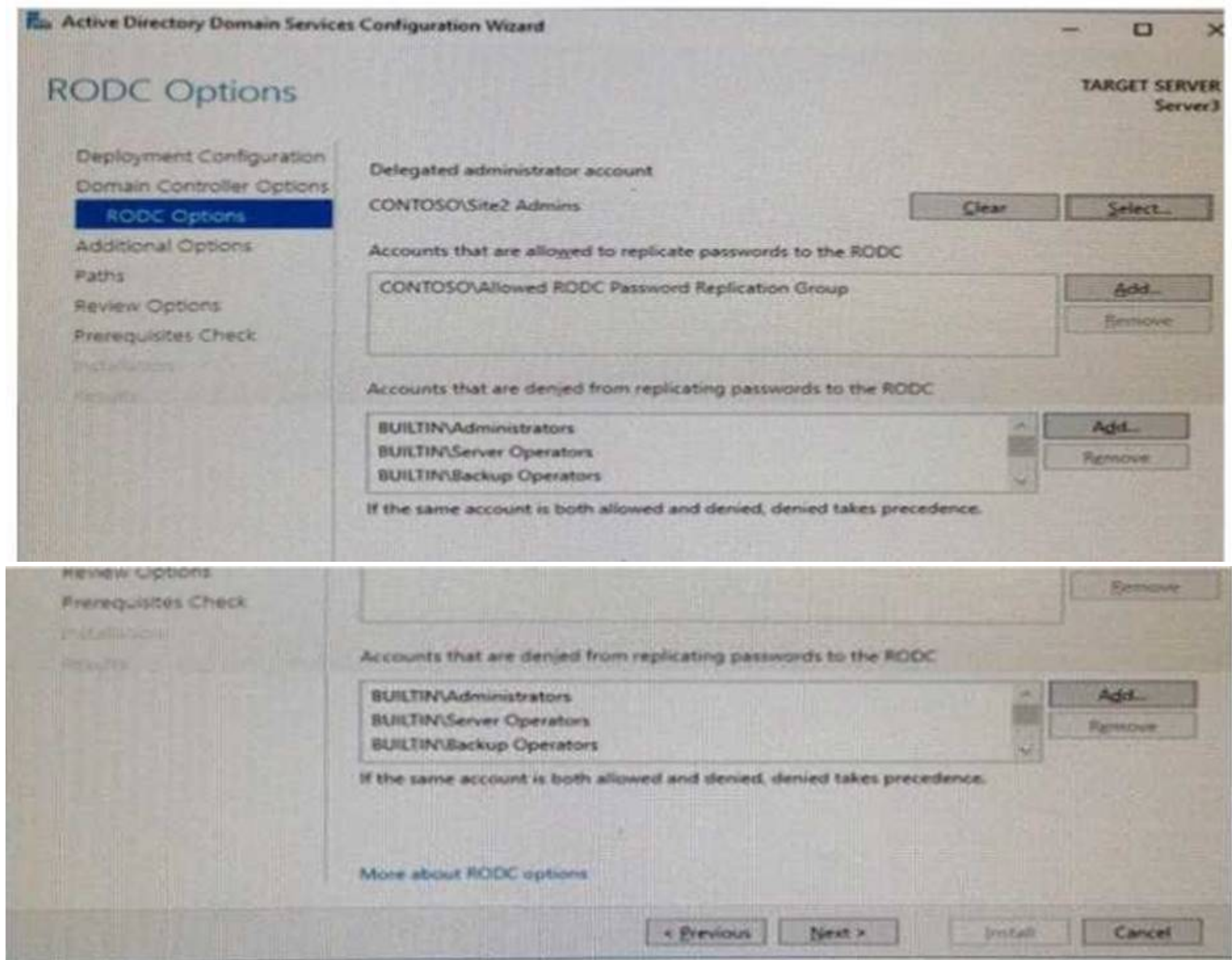
### NEW QUESTION 8

#### HOTSPOT

Your network contains an Active Directory forest. The forest contains two sites named Site1 and Site2. Site1 contains 10 domain controllers. Site1 and Site2 connect to each other by using a WAN link.

You run the Active Directory Domain Services Configuration Wizard as shown in the following graphic.





Server3 is the only server in Site2

Use the drop-down menus to select the answer choice that completes each statement based on the information graphic.

Members of the Site2 Admins group will be able to [answer choice] on Server 3.

make updates to SYSVOL content  
 manage the password replication policy  
 stop and start Active Directory Domain Services (AD DS)

If the WAN link fails, users who are members of the Allowed RODC Password Replication Group [answer choice] in Site2.

will be prevented from logging on  
 will log on with reduced security rights  
 can log on if they have previously logged on

- A. Mastered
- B. Not Mastered

Answer: A

Explanation:

Members of the Site2 Admins group will be able to [answer choice] on Server 3.

make updates to SYSVOL content  
 manage the password replication policy  
 stop and start Active Directory Domain Services (AD DS)

If the WAN link fails, users who are members of the Allowed RODC Password Replication Group [answer choice] in Site2.

will be prevented from logging on  
 will log on with reduced security rights  
 can log on if they have previously logged on

#### NEW QUESTION 9

You deploy a Hyper-V server named Served in an isolated test environment The test environment is prevented from accessing the Internet Server1 runs the Datacenter edition of Windows Server 2016. You plan to deploy the following guest virtual machines on the server

Quantity	Operating system	Domain member
10	Windows Server 2012 R2	Yes
4	Windows Server 2016	No
5	Windows Server 2016	Yes

Which activation model should you use for the virtual machines'?

- A. Multiple Activation Key (MAK)
- B. Automatic Virtual Machine Activation (AVMA)
- C. Original Equipment Manufacturer (OEM) key
- D. Key Management Service (KMS)

Answer: B

#### NEW QUESTION 10

DRAG DROP

You are deploying DirectAccess to a server named DA1. Da1 will be located behind a firewall and will have a single network adapter The intermediary network will be IPv4.

You need to configure firewall to support DirectAccess.

Which firewall rules should you create for each type of traffic? To answer, drag the appropriate ports and protocols to the correct traffic types. Each port and protocol may be used once, more than once, or not at all. You may need to drag the split bar between panes or scroll to view content

Ports and Protocols		Answer Area	
IP protocol ID 1	IP Protocol ID 41	Teredo traffic:	
TCP 443	UDP 3544	6to4 traffic:	
		IP-HTTPS:	

- A. Mastered
- B. Not Mastered

Answer: A

Explanation:

Ports and Protocols		Answer Area	
IP protocol ID 1	IP Protocol ID 41	Teredo traffic:	UDP 3544
TCP 443	UDP 3544	6to4 traffic:	IP Protocol ID 41
		IP-HTTPS:	TCP 443

NEW QUESTION 10

DRAG DROP

You have a server named Server1 that runs Windows Server 2016.

You plan to deploy Internet Information Services (US) in a Windows container. You need to prepare Server1 for the planned deployment.

Which three actions should you perform in sequence? To answer, move the appropriate actions from the list of actions to the answer area and arrange them in the correct order

Actions	Answer Area
Install the Hyper-V server role.	1. <input type="text"/>
Install the Base Container Images.	2. <input type="text"/>
Install the Container feature.	3. <input type="text"/>
Install the Web Server role.	<input type="text"/>
Install Docker.	<input type="text"/>

- A. Mastered  
B. Not Mastered

Answer: A

Explanation:



## Answer Area

1.
2.
3.

### NEW QUESTION 13

#### HOTSPOT

You have a server that runs Windows Server 2016.

You run the commands shown in the following output.

```
PS G:\> Get-DedupVolume | fl

Volume                : G:
VolumeId              : \\?\Volume{2efa2f6e-db4a-4bb1-aal5-31ae8b073dl6}\
Enabled               : True
UsageType             : Default
DataAccessEnabled     : True
Capacity              : 923.87 GB
FreeSpace             : 393.98 GB
UsedSpace             : 529.89 GB
UnoptimizedSize       : 1008.7 GB
SavedSpace            : 478.82 GB
SavingRate            : 47 %
MinimumFileAgeDays    : 3
MinimumFileSize       : 32768
NoCompress            : False
ExcludeFolder         :
ExcludeFileType       :
ExcludeFileTypeDefault : {edb, jrs}
NoCompressionFileType : {asf, mov, wma, wmv...}
ChunkRedundancyThreshold : 100
Verify               : False
OptimizeInUseFiles    : False
OptimizePartialFiles  : False

PS G:\> Get-Date
Tuesday, June 21, 2016 5:29:58 PM

PS G:\DC01> dir | select Mode,LastWriteTime,Length,Name | ft -AutoSize

Mode                LastWriteTime         Length      Name
----                -
d-----          2/18/2015 11:54:56 AM              Snapshots
d-----          2/18/2015 12:11:42 PM            Virtual Machines
-a----          6/21/2016  5:27:40 PM      51539608064    DC01.vhd
-a----          6/18/2016  7:00:00 AM       12400         Readme.txt
-a----          1/5/2015   7:00:00 AM      3939235840    Software.iso
```

For each of the following statements, select Yes if the statement is true. Otherwise, select No.

## Answer Area

### Statements

Yes

No

DC01.vhd will be processed by deduplication.

☐
☐

Readme.txt will be processed by deduplication.

☐
☐

Software.iso will be processed by deduplication.

☐
☐

A. Mastered



**Answer: A**

**Explanation:**

Statements	Yes	No
DC01.vhd will be processed by deduplication.	<input type="radio"/>	<input checked="" type="radio"/>
Readme.txt will be processed by deduplication.	<input type="radio"/>	<input checked="" type="radio"/>
Software.iso will be processed by deduplication.	<input checked="" type="radio"/>	<input type="radio"/>

You have a server that runs Windows Server 2016.  
The server contains a storage pool named Pool1. Pool1 contains five physical disks named Disk1, Disk2, Disk3, Disk4, and Disk5.  
A virtual disk named VirtualDisk1 is stored in pool1. VirtualDisk1 uses the parity storage layout. Disk3 fails.  
You need to remove Disk3 from Pool1.  
Which two commands should you run? Each correct answer presents part of the solution.

- A. Update-StoragePool –FriendlyName Pool1  
B. Set-ResiliencySetting –StoragePool Pool1 –PhysicalDiskRedundancyDefault 4  
C. Reset-PhysicalDisk –FriendlyName Disk3  
D. Set-PhysicalDisk –FriendlyName Disk3 –Usage Retired  
E. Remove-PhysicalDisk –FriendlyName Disk3

**Answer: BE**

**HOTSPOT**

You have a server named Server1 that runs Windows Server 2016. Server1 has the Windows Application Proxy role service installed.


You plan to deploy Remote Desktop Gateway (RD Gateway) services. Clients will connect to the RD Gateway services by using various types of devices including Windows, iOS and Android devices.

You need to publish the RD Gateway services through the Web Application Proxy.

Which command should you run? To answer, select the appropriate options in the answer area.

```
-BackendServerURL 'https://rdg.contoso.com/rdg1/'
-ExternalCertificateThumbprint
'1a2b3c4d5e6f1a2b3c4d5e6f1a2b3c4d5e6f1a2b'

-ExternalURL 'https://rdg.contoso.com/rdg1'
-Name 'RDG1'

-ExternalPreAuthentication 
ADFS
ADFSforOAuth
ClientCertificate
PassThrough

-BackendServerAuthenticationSPN 'HTTP/RDG1'
-ADFSRelyingPartyName 'Default provider'
```

- A. Mastered  
B. Not Mastered

**Answer: A**

**Explanation:**

☒   
 Add-WebApplicationProxyApplication  
 Set-WebApplicationProxyApplication  
 Set-WebApplicationProxyConfiguration  
 -BackendServerURL 'https://rdg.contoso.com/rdg1/'  
 -ExternalCertificateThumbprint  
 '1a2b3c4d5e6f1a2b3c4d5e6f1a2b3c4d5e6f1a2b'  
 -ExternalURL 'https://rdg.contoso.com/rdg1/'  
 -Name 'RDG1'  
 -ExternalPreAuthentication  ☒ -ADFSRelyingPartyName 'Default provider'  
 ADFS  
 ADFSforOAuth  
 ClientCertificate  
 PassThrough  
 -BackendServerAuthenticationSPN 'HTTP/RDG1'

#### NEW QUESTION 24

You need to create highly available storage spaces that connect to directly attached storage on the hosts Which cmdlet should you use?

- A. Enable-ClusterStorageSpacesDirect
- B. Set-StoragePool
- C. Add-ClusterDisk
- D. Update-ClusterVirtualMachineConfiguration

**Answer:** A

#### NEW QUESTION 25

HOTSPOT

You have a server named Server1 that runs Windows Server 2016 Server1 has the Web Application Proxy role service installed

You publish an application named App1 by using the Web Application Proxy.

You need to change the URL that users use to connect to App1 when they work remotely. Which command should you run? To answer, select the appropriate options in the answer area

☒ -ID 874A4543-7983-77A3-1E6D-1163E7419AC1  
 Set-WebApplicationProxySslCertificate  
 Set- WebApplicationProxyApplication  
 Set- WebApplicationProxyConfiguration  
 ☒ https://SP.Contoso.com  
 -ADFSUrl  
 -BackendServerURL  
 -ExternalURL

- A. Mastered
- B. Not Mastered

**Answer:** A

**Explanation:**

▼

Set-WebApplicationProxySslCertificate

Set- WebApplicationProxyApplication

Set- WebApplicationProxyConfiguration

-ID 874A4543-7983-77A3-1E6D-1163E7419AC1

▼

-ADFSUrl

-BackendServerURI

-ExternalURL

https://SP.Contoso.com

**NEW QUESTION 30**

You have a failover cluster named Cluster1.

A virtual machine named VM1 is a highly available virtual machine that runs on Cluster1. A custom application named App1 runs on VM1.

You need to configure monitoring of VM1. If App1 adds an error entry to the Application event log, VM1 should be automatically rebooted and moved to another cluster node

Which tool should you use?

- A. Hyper-V Manager  
B. Failover Cluster Manager  
C. Server Manager  
D. Resource Monitor

**Answer: B**

**NEW QUESTION 33**

HOTSPOT

Your network contains an Active Directory domain named contoso.com. The domain contains four servers named Server1, Server2, Server3, and Server4 that run Windows Server 2016.

Server 1 and Server2 are nodes in Hyper-V cluster named Cluster1 You have a highly available virtual machine named VM1

Server1 is the owner node of VM1 Server3and Server4 are nodes of a scale-out file server named Cluster2,

The storage on Server1 is configured as shown in the following table

<b>Location</b>	<b>Type</b>
C:\ClusterStorage\Volume1	iSCSI Cluster Shared Volumes (CSV)
D:\	A locally attached disk
E:\	An iSCSI LUN
\\Cluster2\Share1	A file share on Cluster2

You need to move the virtual disk of VM1 to a different location

What should you do? To answer, select the appropriate options in the answer area

Tool you should move the virtual disk of VM1:

- ▼
- Disk Management
- Failover Cluster Manager
- Hyper-V Manager
- Server Manager

Location to which you should move the virtual disk of VM1:



\\Cluster2\Share1

D:\

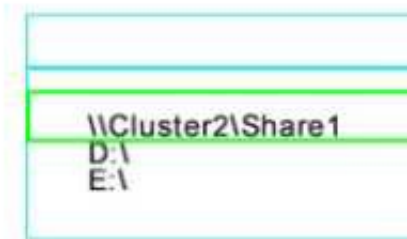
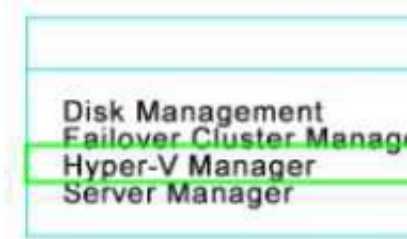
E:\



- A. Mastered
- B. Not Mastered

Answer: A

Explanation:



NEW QUESTION 37

You have an application named App1 App1 is distributed to multiple Hyper-V virtual machines in a multitenant environment You need to ensure that the traffic is distributed evenly among the virtual machines that host App1 What should you include in the environment?

- A. Network Controller and Windows Server Network Load Balancing (NLB) nodes
- B. Network Controller and Windows Server Software Load Balancing (SLB) nodes
- C. an RAS Gateway and Windows Server Network Load Balancing (NLB) nodes
- D. an RAS Gateway and Windows Server Software Load Balancing (SLB) nodes

Answer: D

NEW QUESTION 39

HOTSPOT

You have a machine named VM1 that runs Windows Server 2016 VM1 is a Remote Desktop Services (RDS) server. You need to ensure that only TCP port 3389 can be used to connect to VM1 over the network. Which command should you run on the Hyper-V host? To answer, select the appropriate options in the answer area.

▼

Add-VmNetworkAdapterAcl  
Add-VmNetworkAdapterExtendedAcl  
Set-VmNetworkAdapter  
Set-VmNetworkAdapterRoutingDomain  
Mapping

-VMName VM1 -Direction

▼

Inbound  
Outbound

- A. Mastered
- B. Not Mastered

Answer: A

Explanation:

▼

Add-VmNetworkAdapterAcl  
Add-VmNetworkAdapterExtendedAcl  
Set-VmNetworkAdapter  
Set-VmNetworkAdapterRoutingDomain  
Mapping

-VMName VM1 -Direction

▼

Inbound  
Outbound

-Action Allow -LocalPort 3389 -Protocol TCP -Weight 10

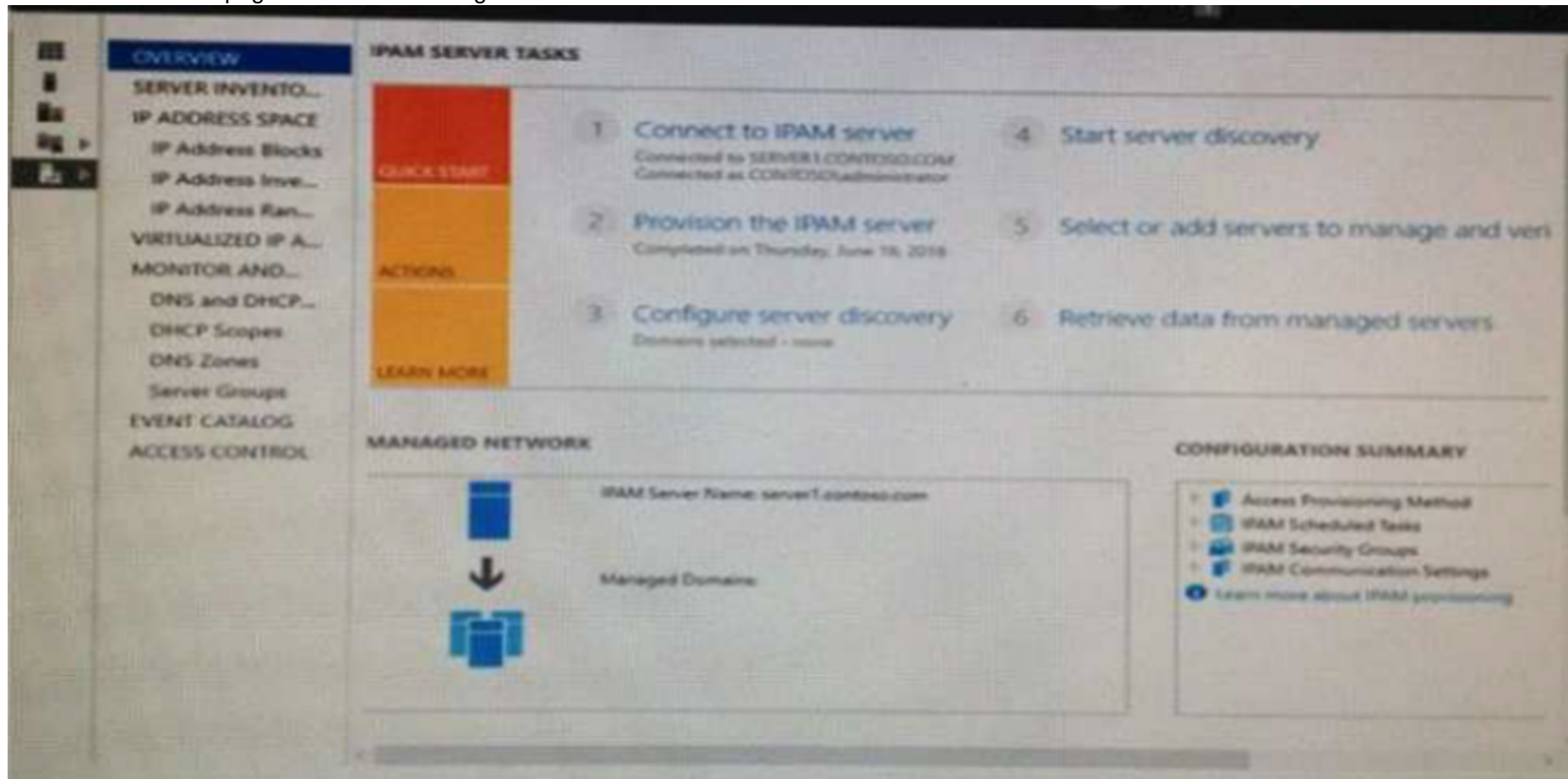
## NEW QUESTION 42

### HOTSPOT

Your company has a testing environment that contains an Active Directory domain named contoso.com. The domain contains a server named Server1 that runs Windows Server 2016. Server1 has IP Address Management (IPAM) installed. IPAM has the following configuration.

```
Version           : 6.3.0.1
Port              : 4885
ProvisioningMethod : Automatic
GpoPrefix         : IPAM
HMACKey           : System.Security.SecureString
```

The IPAM Overview page from Server Manager is shown in the IPAM Overview exhibit.



The group policy configurations are shown in the GPO exhibit.



For each of the following statements, select Yes if the statement is true. Otherwise, select No.

Statements	Yes	No
If a DNS server is added to contoso.com, the server will be discovered by IPAM automatically.	<input type="radio"/>	<input type="radio"/>
If you manually add a DHCP server named Server3 to IPAM and set the Manageability status to Managed, the IPAM_DHCP Group Policy will apply to Server3.	<input type="radio"/>	<input type="radio"/>
If you click Start server discovery, the domain controllers in contoso.com will be discovered by IPAM.	<input type="radio"/>	<input type="radio"/>

- A. Mastered  
 B. Not Mastered

Answer: A

Explanation:

Statements	Yes	No
If a DNS server is added to contoso.com, the server will be discovered by IPAM automatically.	<input type="radio"/>	<input checked="" type="radio"/>
If you manually add a DHCP server named Server3 to IPAM and set the Manageability status to Managed, the IPAM_DHCP Group Policy will apply to Server3.	<input checked="" type="radio"/>	<input type="radio"/>
If you click Start server discovery, the domain controllers in contoso.com will be discovered by IPAM.	<input type="radio"/>	<input checked="" type="radio"/>

#### NEW QUESTION 47

You need to modify the GPO prefix by IPAM. What should you do?

- A. Run theSet-IpamConfigurationcmdlet  
 B. ClickProvision the IPAM serverin Server Manager.  
 C. ClickConfigure server discoveryin Server Manage  
 D. Run theInvoke-IpamGpoProvisioningcmdlet

Answer: A

#### NEW QUESTION 48

You need to ensure that VM1 and VM2 can communicate with each other only. The solution must prevent VM1 and VM2 from communicating with Server1. Which cmdlet should you use?

- A. Set-NetNeighbor  
 B. Remove-VMSwitchTeamMember  
 C. Set-VMSwitch  
 D. Enable-VMSwitchExtension

Answer: C

#### NEW QUESTION 53

##### HOTSPOT

Your network contains an Active Directory domain named contoso.com. The domain contains four servers named Server1. Server2. Server3. and Server4 that run Windows Server 2016.

Server1 has IP Address Management (IPAM) installed Server2, Server3, and Server4 have the DHCP Server role instated IPAM manages Server2. Server3, and Server4.

A domain user named User1 is a member of the groups shown in the following table



Server name	Group
Server1	IPAM Users
Server2	DHCP Administrators
Server3	DHCP Users
Server4	Users

Which actions can User1 perform? To answer, select the appropriate options in the answer area.

Actions	Yes	No
Use the DHCP console on Server1 to create a DHCP scope on Server2.	<input type="radio"/>	<input type="radio"/>
Use the DHCP console on Server1 to create a DHCP scope on Server3.	<input type="radio"/>	<input type="radio"/>
Use the IPAM node of Server Manager on Server1 to create a DHCP scope on Server4.	<input type="radio"/>	<input type="radio"/>

- A. Mastered
- B. Not Mastered

Answer: A

Explanation:

Actions	Yes	No
Use the DHCP console on Server1 to create a DHCP scope on Server2.	<input checked="" type="radio"/>	<input type="radio"/>
Use the DHCP console on Server1 to create a DHCP scope on Server3.	<input type="radio"/>	<input checked="" type="radio"/>
Use the IPAM node of Server Manager on Server1 to create a DHCP scope on Server4.	<input type="radio"/>	<input checked="" type="radio"/>

#### NEW QUESTION 57

Note: This question is part of a series of questions that use the same similar answer choices. An answer choice may be correct for more than one question in the series. Each question is independent of the other questions in this series. Information and details provided in a question apply only to that question. You have a two-node Hyper-V cluster named Cluster1 at a primary location and a stand-alone Hyper-V host named Server1 at a secondary location. A virtual machine named VM1 runs on Cluster1. You configure a Hyper-V Replica of VM1 to Server1. You need to perform a Test Failover of VM1. Which tool should you use?

- A. the clussvc.exe command
- B. the cluster.exe command
- C. the Computer Management console
- D. the configurehyperv.exe command
- E. the Disk Management console
- F. the Failover Cluster Manager console
- G. the Hyper-V Manager console
- H. the Server Manager Desktop app

Answer: G

## NEW QUESTION 62

Note: This question is part of a series of questions that use the same similar answer choices. An answer choice may be correct for more than one question in the series. Each question is independent of the other questions in this series. Information and details provided in a question apply only to that question.

You have a Hyper-V host named Server1 that runs Windows Server 2016. Server1 has a dynamically expanding virtual hard disk (VHD) file that is 900 GB. The VHD contains 400 GB of free space.

You need to reduce the amount of disk space used by the VHD. What should you run?

- A. the Mount-VHD cmdlet
- B. the Diskpart command
- C. the Set-VHD cmdlet
- D. the Set-VM cmdlet
- E. the Set-VMHost cmdlet
- F. the Set-VMProcessor cmdlet
- G. the Install-WindowsFeature cmdlet
- H. the Optimize-VHD cmdlet

**Answer:** H

## NEW QUESTION 63

In this section, you'll see one or more sets of questions with the same scenario and problem. Each question presents a unique solution to the problem, and you must determine whether the solution meets the stated goals. Any of the solutions might solve the problem. It is also possible that none of the solutions solve the problem.

Once you answer a question in this section, you will NOT be able to return to it. As a result, these questions will not appear in the review screen.

Note: This question is part of a series of questions that present the same scenario. Each question in the series contains a unique solution. Determine whether the solution meets the stated goals.

Your network contains an Active Directory domain named contoso.com. The domain contains a DNS server named Server1. All client computers run Windows 10. On Server1, you have the following zone configuration:

ZoneName	ZoneType	IsAutoCreated	IsDsIntegrated	IsReverseLookupZone	IsSign
_msdcs.contoso.com	Primary	False	True	False	False
adatum.com	Forwarder	False	False	False	
contoso.com	Primary	False	True	False	False
fabrikam.com	Primary	False	False	False	True
TrustAnchors	Primary	False	True	False	False

You have the following subnets defined on Server1:

Name	IPv4Subnet	IPv6Subnet
Subnet1	{10.0.0.0/24}	
Subnet2	{10.0.1.0/24}	
Subnet3	{192.168.15.0/24}	
Subnet4	{172.16.1.0/24}	

You need to prevent Server1 from resolving queries from DNS clients located on Subnet4. Server1

must resolve queries from all other DNS clients.

Solution: From a Group Policy object (GPO) in the domain, you modify the Network List Manager Policies.

Does this meet the goal?

- A. Yes
- B. No

**Answer:** B

## NEW QUESTION 66

In this section, you'll see one or more sets of questions with the same scenario and problem. Each question presents a unique solution to the problem, and you must determine whether the solution meets the stated goals. Any of the solutions might solve the problem. It is also possible that none of the solutions solve the problem.

Once you answer a question in this section, you will NOT be able to return to it. As a result, these questions will not appear in the review screen.

Note: This question is part of a series of questions that present the same scenario. Each question in the series contains a unique solution. Determine whether the solution meets the stated goals.

Your network contains an Active Directory domain named contoso.com. The domain contains a DNS server named Server1. All client computers run Windows 10. On Server1, you have the following zone configuration:

ZoneName	ZoneType	IsAutoCreated	IsDsIntegrated	IsReverseLookupZone	IsSign
-----	-----	-----	-----	-----	-----
_msdcs.contoso.com	Primary	False	True	False	False
adatum.com	Forwarder	False	False	False	
contoso.com	Primary	False	True	False	False
fabrikam.com	Primary	False	False	False	True
TrustAnchors	Primary	False	True	False	False

You have the following subnets defined on Server1.

Name	IPv4Subnet	IPv6Subnet
-----	-----	-----
Subnet1	{10.0.0.0/24}	
Subnet2	{10.0.1.0/24}	
Subnet3	{192.168.15.0/24}	
Subnet4	{172.16.1.0/24}	

You need to prevent Server1 from resolving queries from DNS clients located on Subnet4 Server1

must resolve queries from all other DNS clients

Solution From Windows PowerShell on Setver1, you run the Add-DnsServerTrustAnchor cmdtel Does this meet the goal?

- A. Yes
- B. No

Answer: A

#### NEW QUESTION 71

Note: This question is part of a series of questions that present the same scenario. Each question in the series contains a unique solution that might meet the stated goals. Some question sets might have more than one correct solution, while others might not have a correct solution.

After you answer a question in this section, you will NOT be able to return to it. As a result, these questions will not appear in the review screen.

You have two servers that run Windows Server 2016.

You plan to create a Network Load Balancing (NLB) cluster that will contain both servers. You need to configure the network cards on the servers for the planned NLB configuration.

Solution: You configure the network cards to be on the same subnet and to have static IP addresses. You configure the cluster to use multicast.

Does this meet the goal?

- A. Yes
- B. No

Answer: A

Explanation:

References:

<https://technet.microsoft.com/en-us/windows-server-docs/networking/technologies/network-load-balancing>

#### NEW QUESTION 74

Note: This question is part of a series of questions that present the same scenario. Each question in the series contains a unique solution that might meet the stated goals. Some question sets might have more than one correct solution, while others might not have a correct solution.

After you answer a question in this section, yon will NOT be able to return to it. As a result, these questions will not appear in the review screen.

You have two servers that run Windows Server 2016.

You plan to create a Network Load Balancing (NLB) cluster that will contain both servers. You need to configure the network cards on the servers for the planned NLB configuration.

Solution: You configure the network cards to be on the same subnet and to have static IP addresses. You configure the cluster to use unicast.

Does this meet the goal?

- A. Yes
- B. No

Answer: A

Explanation:

References:

<https://technet.microsoft.com/en-us/windows-server-docs/networking/technologies/network-load-balancing>

#### NEW QUESTION 75

Note: This question is part of a series of questions that present the same scenario. Each question in the series contains a unique solution that might meet the stated goals. Some question sets might

have more than one correct solution, while others might not have a correct solution.

After you answer a question in this section, you will NOT be able to return to it. As a result, these questions will not appear in the review screen.

You are a server administrator at a company named Contoso, Ltd.

Contoso has a Windows Server 2016 Hyper-V environment configured as shown in the following table.



Hyper-V host name	Configuration	Virtual switch name
Host1	- Uses an Intel processor - Is a member of a SAN named SAN1	Switch1
Host2	- Uses an AMD processor - Has local storage only	Switch2
Host3	- Uses an Intel processor - Is a member of a SAN named SAN1	Switch1
Host4	- Uses an Intel processor - Has local storage only	Switch2

All of the virtual switches are of the external type.

You need to ensure that you can move virtual machines between the hosts without causing the virtual machines to disconnect from the network.

Solution: You implement live migration by using Host3 and Host4. Does this meet the goal?

A. Yes

B. No

**Answer:** A

#### NEW QUESTION 80

Note This question is part of a series of questions that present the same scenario. Each question in the series contains a unique solution that might meet the stated goals. Some question sets might have more than one correct solution, while others might not have a correct solution.

After you answer a question in this section, you will NOT be able to return to it. As a result, these questions will not appear in the review screen.

You are a server administrator at a company named Contoso, Ltd.

Contoso has a Windows Server 2016 Hyper-V environment configured as shown in the following table.

Hyper-V host name	Configuration	Virtual switch name
Host1	- Uses an Intel processor - Is a member of a SAN named SAN1	Switch1
Host2	- Uses an AMD processor - Has local storage only	Switch2
Host3	- Uses an Intel processor - Is a member of a SAN named SAN1	Switch1
Host4	- Uses an Intel processor - Has local storage only	Switch2

All of the virtual switches are of the external type.

You need to ensure that you can move virtual machines between the hosts without causing the virtual machines to disconnect from the network.

Solution: You implement live migration by using Host1 and Host2. Does this meet the goal?

A. Yes

B. No

**Answer:** B

#### NEW QUESTION 83

Note: This question is part of a series of questions that present the same scenario. Each question in the series contains a unique solution that might meet the stated goals. Some question sets might have more than one correct solution, while others might not have a correct solution.

After you answer a question in this section, you will NOT be able to return to it. As a result, these questions will not appear in the review screen.

You are a server administrator at a company named Contoso, Ltd.

Contoso has a Windows Server 2016 Hyper-V environment configured as shown in the following table.

Hyper-V host name	Configuration	Virtual switch name
Host1	- Uses an Intel processor - Is a member of a SAN named SAN1	Switch1
Host2	- Uses an AMD processor - Has local storage only	Switch2
Host3	- Uses an Intel processor - Is a member of a SAN named SAN1	Switch1
Host4	- Uses an Intel processor - Has local storage only	Switch2

All of the virtual switches are of the external type.

You need to ensure that you can move virtual machines between the hosts without causing the virtual machines to disconnect from the network.

Solution: You implement a Hyper-V Replica between Host2 and Host4. Does this meet the goal?

- A. Yes
- B. No

Answer: B

#### NEW QUESTION 85

Note: This question is part of a series of questions that present the same scenario. Each question in the series contains a unique solution that might meet the stated goals. Some question sets might have more than one correct solution, while others might not have a correct solution.

Your network contains an Active Directory forest

You install Windows Server 2016 on 10 virtual machines.

You need to deploy the Web Server (IIS) server role identically to the virtual machines.

Solution: From a Group policy object (GPO), you create an application control policy, and then you apply the policy to the virtual machines.

Does this meet the goal?

- A. Yes
- B. No

Answer: B

#### NEW QUESTION 86

HOTSPOT

You implement a Windows Server 2016 failover cluster named Cluster1 as a highly available file server.

You run the Get-Cluster cmdlet and receive the following output.

AddEvictDelay	: 60
AdministrativeAccessPoint	: Dns
AutoAssignNodeSite	: 0
AutoBalancerMode	: 2
AutoBalancerLevel	: 1
ClusSvcHangTimeout	: 135
ClusSvcRegroupStageTimeout	: 5
ClusSvcRegroupTickInMilliseconds	: 300
ClusterEnforcedAntiAffinity	: 0
ClusterFunctionalLevel	: 9
ClusterUpgradeVersion	: 7
ClusterGroupWaitDelay	: 120
ClusterLogLevel	: 3
ClusterLogSize	: 300
DatabaseReadWriteMode	: 0
DefaultNetworkRole	: 3
Description	:
Domain	: contoso.com
EnableSharedVolumes	: Enabled
FixQuorum	: 0
Id	: ec6121be-f816-426b-b550-72cafb943f1b
Name	: cluster1

Use the drop-down menus to select the answer choice that completes each statement based on the information presented in the graphic.



## Answer Area

You can perform Cluster-Aware Updating (CAU) in [answer choice].

	▼
self-updating mode only	
remote-updating mode only	
remote-updating mode and self-updating mode	

You can use [answer choice] to create a file share in Cluster1.

	▼
DFS Management	
Failover Cluster Manager	
File Server Resource Manager	
Server Manager	

- A. Mastered
- B. Not Mastered

Answer: A

Explanation:

## Answer Area

You can perform Cluster-Aware Updating (CAU) in [answer choice].

	▼
self-updating mode only	
remote-updating mode only	
remote-updating mode and self-updating mode	

You can use [answer choice] to create a file share in Cluster1.

	▼
DFS Management	
Failover Cluster Manager	
File Server Resource Manager	
Server Manager	

### NEW QUESTION 91

You have a Windows Server 2016 Hyper-V failover cluster that contains two nodes named Node1 and Node2. On Node1, you create a virtual machine named VM01 by using Hyper-V Manager. You need to configure VM01 to move to Node2 automatically if Node1 becomes unavailable. What should you do?

- A. From Failover Cluster manager, run the configure Role actions.
- B. From Hyper-V Manager, click VM01 and click Enable Replication.
- C. From Hyper-V Manager Click Node 1 and the modify the hyper-V settings.
- D. From Windows Powershell, run the Enable-VMReplication cmdlet.

Answer: A

Explanation:

<http://windowsitpro.com/hyper-v/make-vm-highly-available-windows-server-2012>

### NEW QUESTION 96

Note This question is part of a series of questions that use the same scenario. For your convenience, the scenario is repeated in each question. Each question presents a different goal and answer choices, but the text of the scenario is exactly the same in each question in this series.

Start of Repeated Scenario:

Your network contains an Active Directory domain named contoso.com. The functional level of the forest and the domain is Windows Server 2008 R2. All servers in the domain run Windows Server 2016 Standard. The domain contains 300 client computers that run either Windows 8.1 or Windows 10. The domain contains nine servers that are configured as shown in the following table.



Name	Configuration	Planned changes
Server1	Domain controller	None
Server2	File server	Run Failover Clustering and Storage Spaces Direct
Server3	File server	Run Failover Clustering and Storage Spaces Direct
Server4	Hyper-V host	Run shielded virtual machines
Server5	Hyper-V host	None
Server6	Member server	Run Active Directory Federation Services (AD FS)
VM1	Virtual machine hosted on Server5	None
VM2	Virtual machine hosted on Server5	None
VM3	Virtual machine hosted on Server5	None

The virtual machines are configured as follows:

- Each virtual machine has one virtual network adapter
- VM1 and VM2 are part of a Network Load Balancing (NLB) cluster.
- All of the servers on the network can communicate with all of the virtual machines. End of repeated Scenario.

On server4, you plan to provision a new volume that will be used to create large, fixed-size VHDX files.

Which type of file system should you use the new volume to minimize the amount of time required to create the VHDX files?

- A. ReFS
- B. NTFS
- C. CVFS
- D. exFAT

**Answer:** A

#### NEW QUESTION 99

DRAG DROP

You have a network that contains several servers that run Windows Server 2016.

You need to use Desired State Configuration (DSC) to configure the servers to meet the following requirements:

- Install the Web Server server role
- Start the World Wide Web Publishing service.

How should you configure the DSC resources? To answer, drag the appropriate values to the correct locations. Each value may be used once, more than once, or not at all. You may need to drag the split bar between panes or scroll to view content.

### Values

Name

Service

WindowsFeature

WindowsProcess

Present

Source

Running

Stopped

### Answer Area

Value

 WebServerRole

```

{
    Ensure = "
        Value
    "
    Name = "Web-Server"
}

```

Value

 WorldWideWebPublishing

```

{
    Name = "W3SVC"
    StartupType = "Automatic"
    State = "
        Value
    "
}

```

- A. Mastered
- B. Not Mastered

**Answer:** A

**Explanation:**

## Values

Name

Service

WindowsFeature

WindowsProcess

Present

Source

Running

Stopped

## Answer Area

```
WindowsFeature WebServerRole
{
    Ensure = "Present"
    Name = "Web-Server"
}
Service WorldWideWebPublishing
{
    Name = "W3SVC"
    StartupType = "Automatic"
    State = "Running"
}
```

### NEW QUESTION 101

You have a server named Server1 that runs Windows Server 2016. You need to install the DNS Server role on Server1. What should you run?

- A. the dns.exe command
- B. the optionalfeature.exe command
- C. the Install-Package cmdlet
- D. the Enable-WindowsOptionalFeature cmdlet

Answer: D

### NEW QUESTION 104

You have a Hyper-V host named Server1 that runs Windows Server 2016. Server1 contains four virtual machines that are configured as shown in the following table.

Virtual machine name	Configuration
VM1	A shielded virtual machine that runs Windows Server 2012 R2
VM2	A shielded virtual machine that runs Windows Server 2016
VM3	A virtual machine that runs Windows Server 2012 R2 and has Secure Boot enabled
VM4	A virtual machine that runs Windows Server 2016 and has all of its drivers protected by using BitLocker Drive Encryption (BitLocker)

To which machine or machines can you connect by using Virtual Machine Connection from Hyper-V Manager?

- A. VM1, VM2, VM3 and VM4
- B. VM4 only
- C. VM1 and VM2 only
- D. VM3 and VM4 only
- E. VM2 only

Answer: D

### NEW QUESTION 109

Note: This question is part of a series of questions that present the same scenario. Each question in the series contains a unique solution that might meet the stated goals. Some question sets might have more than one correct solution, while others might not have a correct solution.

After you answer a question in this section, you will NOT be able to return to it. As a result, these questions will not appear in the review screen.

You have a server named Server1 that runs Windows Server 2016.

Server1 hosts a line-of-business application named App1. App1 has a memory leak that occasionally causes the application to consume an excessive amount of memory.

You need to log an event in the Application event log whenever App1 consumes more than 4 GB of memory.  
Solution: You create a performance counter alert data collector. Does this meet the goal?

- A. Yes
- B. No

**Answer:** A

#### NEW QUESTION 112

After you answer a question in this section, you will NOT be able to return to it. As a result, these questions will not appear in the review screen.

You have a server named Server1 that runs Windows Server 2016.

You plan to use Windows Server Backup to back up all of the data on Server1. You create a new volume on Server1.

You need to ensure that the new volume can be used as a backup target. The backup target must support incremental backups.

Solution: You mount the volume to C:\Backup, and you format the volume by using FAT32. Does this meet the goal?

- A. Yes
- B. No

**Answer:** A

#### NEW QUESTION 116

After you answer a question in this section, you will NOT be able to return to it. As a result, these questions will not appear in the review screen.

You have a server named Server1 that runs Windows Server 2016.

You plan to use Windows Server Backup to back up all of the data on Server1. You create a new volume on Server1.

You need to ensure that the new volume can be used as a backup target. The backup target must support incremental backups.

Solution: You mount the volume to C:\Backup, and you format the volume by using NTFS. Does this meet the goal?

- A. Yes
- B. No

**Answer:** A

#### NEW QUESTION 117

HOTSPOT

You have a Hyper-V host named Server1 that runs Windows Server 2016. Server1 has a virtual disk file named Disk1.vhdx that contains an installation of Windows Server 2016.

You create a virtual disk file named Disk2.vhdx that is configured as shown in the following exhibit.



```

>_ Administrator: Windows PowerShell

PS C:\> Get-VHD -Path C:\Folder1\Disk2.vhdx

ComputerName      : SERVER1
Path              : c:\folder1\disk2.vhdx
VhdFormat         : VHDX
VhdType           : Differencing
FileSize          : 4194304
Size              : 107374182400
MinimumSize       :
LogicalSelectorSize : 512
PhysicalSelectorSize : 4096
BlockSize         : 2097152
ParentPath        : C:\Folder1\Disk1.vhdx
DiskIdentifier     : 6D447006-DE3B-470A-838A-25B064ABEF39
FragmentationPercentage :
Alignment         : 1
Attached          : False
DiskNumber        :
Number            :

PS C:\>
  
```

Use the drop-down menus to select the answer choice that completes each statement based on the information presented in the graphic.

### Answer Area

When you move Disk1.vhdx to C:\Folder2, you will be able to use Disk2.vhdx only after you run [answer choice].

▼
Merge-VHD
Optimize-VHD
Optimize-VHDSets
Set-VHD
Test-VHD

Before you can copy files directly into Disk2.vhdx, you must first run [answer choice].

▼
Merge-VHD
Mount-VHD
Optimize-VHD
Resize-VHD
Set-VHD

- A. Mastered
- B. Not Mastered

Answer: A

Explanation:

### Answer Area

When you move Disk1.vhdx to C:\Folder2, you will be able to use Disk2.vhdx only after you run [answer choice].

▼

Merge-VHD
Optimize-VHD
Optimize-VHDSets
Set-VHD
Test-VHD

Before you can copy files directly into Disk2.vhdx, you must first run [answer choice].

▼

Merge-VHD
Mount-VHD
Optimize-VHD
Resize-VHD
Set-VHD

#### NEW QUESTION 121

You have a server named Server1 that runs Windows Server 2016. The disks on Server1 are configured as shown in the following table.

Volume	Type	File System	Capacity
C:	Attached locally	NTFS	150 GB
D:	Attached locally	exFAT	100 GB
E:	Attached locally	NTFS	20 GB
F:	Attached locally	ReFS	1 TB
G:	iSCSI LUN	NTFS	2 TB

Windows Server 2016 is installed in C:\Windows.

On which two volumes can you enable data deduplication? Each correct answer presents a complete solution.

- A. C:
- B. D:
- C. E:
- D. F:
- E. G:

Answer: CE

#### NEW QUESTION 125

HOTSPOT

You have a Hyper-V host named Server1 that runs Windows Server 2016.

You deploy a virtual machine named VM1 to Server1. VM1 runs Windows Server 2016. You need to ensure that you can install the Hyper-V server role on VM1.

Which command should you run? To answer, select the appropriate options in the answer area.

### Answer Area

▼

Enable-VMIntegrationService
Set-VM
Set-VM BIOS
Set-VMFirmware
Set-VMHost
Set-VMProcessor

▼

SERVER1 - EnableEnhancedSessionMode \$true
SERVER1 - EnableSecureBoot on
SERVER1 - ExposeVirtualizationExtensions \$true
VM1 - EnableEnhancedSessionMode \$true
VM1 - EnableSecureBoot on
VM1 - ExposeVirtualizationExtensions \$true

- A. Mastered
- B. Not Mastered

**Answer:** A

**Explanation:**

References:

<https://docs.microsoft.com/en-us/virtualization/hyper-v-on-windows/user-guide/nested-virtualization>

#### NEW QUESTION 126

You need to implement network virtualization.

On which object should you configure the virtual subnet ID?

- A. Virtual switch
- B. Hyper-V server
- C. VM
- D. Virtual network adapter

**Answer:** A

#### NEW QUESTION 131

Note: This question is part of a series of questions that use the same or similar answer choices. An answer choice may be correct for more than one question in the series. Each question is independent of the other questions in this series. Information and details provided in a question apply only to that question.

You have two servers named Server1 and Server2 that run Windows Server 2016. Server1 and Server2 have the Hyper-V server role installed and are nodes in a failover cluster.

On Server1, an administrator creates a virtual machine named VM1. You need to configure VM1 for high availability.

Which tool should you use?

- A. the clussvc.exe command
- B. the cluster.exe command
- C. the Computer Management snap-in
- D. the configurehyperv.exe command
- E. the Disk Management snap-in
- F. the Failover Cluster Manager snap-in
- G. the Hyper-V Manager snap-in
- H. the Server Manager app

**Answer:** F

**Explanation:**

References:

<http://windowsitpro.com/hyper-v/make-vm-highly-available-windows-server-2012>

#### NEW QUESTION 132

DRAG DROP

Your network contains an Active Directory domain. The domain contains two domain controllers named DC1 and DC2. DC2 is a virtual machine that is hosted on a Hyper-V host named HyperV1. DC1 holds the PDC emulator operations master role.

You need to create a new domain controller named DC3 by using domain controller cloning.

Which five actions should you perform in sequence before you can import the cloned virtual machine? To answer, move the appropriate actions from the list of actions to the answer area and arrange them in the correct order.

NOTE: More than one order of answer choices is correct. You will receive credit for any of the correct orders you select.



## Actions

Stop DC2.

Run the **New-ADDCCloneConfigFile** cmdlet.

Modify the group membership of DC3.

Export DC2.

Run the **Get-ADDCCloningExcludedApplicationList** cmdlet.

Modify the group membership of DC2.

## Answer Area



- A. Mastered
- B. Not Mastered

Answer: A

Explanation:

## Actions

Stop DC2.

Run the **New-ADDCCloneConfigFile** cmdlet.

Modify the group membership of DC3.

Export DC2.

Run the **Get-ADDCCloningExcludedApplicationList** cmdlet.

Modify the group membership of DC2.

## Answer Area



Modify the group membership of DC2.

Run the **Get-ADDCCloningExcludedApplicationList** cmdlet.

Run the **New-ADDCCloneConfigFile** cmdlet.

Stop DC2.

Export DC2.



### NEW QUESTION 136

You create a Nano server image named Nano1.vhdx by using the New-NanoServerImage cmdlet. You attach Nano1.vhdx to a Generation 1 virtual machine named Nano1.

When you start Nano1, you get the following error message: "Boot failure. Reboot and select proper Boot device or Insert Boot Media in selected Boot device" You need to successfully start Nano server. What should you do?

- A. Attach Nano1.vhdx to a SCSIcontroller.
- B. Recreate Nano1 as a Generation 2 virtual machine.
- C. Increase the memory of Nano1 to 512 Mb.
- D. Modify the BIOS settings of Nano1.

**Answer:** B

**Explanation:**

A Generation 1 VM cannot boot from a vhdx disk; only a Generation 2 VM can boot from an vhdx disk.

**NEW QUESTION 140**

**HOTSPOT**

You have a DNS server named Server1.

The forwarders are configured as shown in the Forwarders exhibit. (Click the Exhibit button.)

**SERVER1 Properties**

Debug Logging | Event Logging | Monitoring | Security  
 Interfaces | **Forwarders** | Advanced | Root Hints

Forwarders are not available because this server does not use recursion.

IP Address	Server FQDN
168.63.129.16	<Unable to resolve>

☒ Use root hints if no forwarders are available Edit...

Note: If conditional forwarders are defined for a given domain, they will be used instead of server-level forwarders. To create or view conditional forwarders, navigate to the Conditional Forwarders node in the scope tree.

OK Cancel Apply Help

The Advanced Settings are configured as shown in the Advanced exhibit. (Click the Exhibit button.)



SERVER1 Properties

Debug Logging    Event Logging    Monitoring    Security  
 Interfaces    Forwarders    **Advanced**    Root Hints

Server version number:  
 10.0 14300 (0x37dc)

Server options:

☒ Disable recursion (also disables forwarders)  
☐ Enable BIND secondaries  
☐ Fail on load if bad zone data  
☒ **Enable round robin**  
☒ Enable netmask ordering  
☒ Secure cache against pollution

Name checking:    Multibyte (UTF8)    v

Load zone data on startup:    From Active Directory and registry    v

☐ Enable automatic scavenging of stale records

Scavenging period:    0    days    v

Reset to Default

OK    Cancel    Apply    Help

The Root Hints are configured as shown in the Root Hints exhibit. (Click the Exhibit button.)

SERVER1 Properties

Debug Logging    Event Logging    Monitoring    Security  
 Interfaces    Forwarders    Advanced    **Root Hints**

Root hints resolve queries for zones that do not exist on the local DNS server. They are only used if forwarders are not configured or fail to respond.

Name servers:

Server Fully Qualified Domain Name (FQDN)	IP Address
a.root-servers.net.	[2001:503:ba3e::2...
b.root-servers.net.	[2001:500:84:b]
f.root-servers.net.	[2001:500:2f:f]
i.root-servers.net.	[2001:7fe::53]
l.root-servers.net.	[2001:500:9f::42]
m.root-servers.net.	[2001:dc3::35]

Add...    Edit...    Remove    Copy from Server

OK    Cancel    Apply    Help

Server1 does not contain any DNS zones.  
 For each of the following statements, select Yes if the statement is true. Otherwise, select No.



## Answer Area

Statements	Yes	No
Server1 can resolve the names of hosts that are located on the Internet.	<input type="radio"/>	<input type="radio"/>
From Server1 Properties, if you perform a test from the Monitoring tab, the recursive test will pass.	<input type="radio"/>	<input type="radio"/>
Server1 is configured as a root DNS server.	<input type="radio"/>	<input type="radio"/>

- A. Mastered
- B. Not Mastered

**Answer:** A

**Explanation:**

Recursion is disabled so internet hosts cannot be resolved. The recursive test fails because recursion is disabled. Server1 is not configured as a root server. The forwarders list would be greyed out if it was.

### NEW QUESTION 145

You have a server named Server1 that runs Windows Server 2016. You need to configure Server1 as a Web Application Proxy. Which server role or role service should you install on Server1?

- A. Web Server (IIS)
- B. Network Policy and Access Services
- C. Direct Access and VPN (RAS)
- D. Active Directory Federation Services
- E. Remote Access

**Answer:** E

### NEW QUESTION 149

Note: This question is part of a series of questions that present the same scenario. Each question in the series contains a unique solution that might meet the stated goals. Some question sets might have more than one correct solution, while others might not have a correct solution.

After your answer a question in this section, you will NOT be able to return to it. As a result, these questions will not appear in the review screen.

Your network contains an Active Directory forest named contoso.com. You need to identify which server is the schema master.

Solution: From a command prompt, you run netdom query fsmo. Does this meet the goal?

- A. Yes
- B. No

**Answer:** A

**Explanation:**

References: <https://blogs.technet.microsoft.com/mempson/2007/11/08/how-to-find-out-who-has-your-fsmo-roles/>

### NEW QUESTION 154

You have a server named Server1 that runs Windows Server 2016 and is configured as a domain controller.

You install the DNS Server server role on Server1.

You plan to store a DNS zone in a custom Active Directory partition. You need to create a new Active Directory partition for the zone. What should you use?

- A. Set-DnsServer
- B. Active Directory Sites and Services
- C. Dns.exe
- D. Dnscmd.exe

**Answer:** D

**Explanation:**

[https://technet.microsoft.com/en-us/library/ee649181\(v=ws.10\).aspx](https://technet.microsoft.com/en-us/library/ee649181(v=ws.10).aspx)

### NEW QUESTION 155

DRAG DROP

Your network contains an Active Directory domain named contoso.com. The domain contains a server named Server1 that runs Windows Server 2016.

You install IP Address Management (IPAM) on Server1.

You need to manually start discovery of the servers that IPAM can manage in contoso.com.

Which three cmdlets should you run in sequence? To answer, move the appropriate cmdlets from the list of cmdlets to the answer area and arrange them in the

correct order.

Cmdlets

Add-IPAMAddress

Add-IPAMDiscoveryDomain

Add-IPAMSubnet

Update-IPAMServer

Invoke-IPAMServerProvisioning

Start-ScheduledTask

Answer Area

⏪

⏩

⏴

⏵

- A. Mastered
- B. Not Mastered

Answer: A

Explanation:

https://technet.microsoft.com/itpro/powershell/windows/ipam/add-ipamdiscoverydomain https://technet.microsoft.com/itpro/powershell/windows/ipam/add-ipamserverinventory https://technet.microsoft.com/itpro/powershell/windows/ipam/invoke-ipamserverprovisioning

NEW QUESTION 160

You have a Hyper-V host named Server1 that runs Windows Server 2016. Server1 hosts a virtual machine named VM1. VM1 is in a workgroup. VM1 is currently in a running state. You need to create 10 copies of VM1 on Server1 in the least amount of time possible. Which cmdlets should you use?

- A. Stop-VM, and then Import-VM
- B. Export-VM, and then Import-VM
- C. Checkpoint-VM, and then New-VM
- D. Copy-VMFile, and then New-VM

Answer: B

NEW QUESTION 165

Note: This question is part of a series of questions that use the same scenario. For your convenience, the scenario is repeated in each question. Each question presents a different goal and answer choices, but the text of the scenario is exactly the same in each question in this series.  
Start of repeated scenario  
Your network contains an Active Directory domain named contoso.com. The functional level of the forest and the domain is Windows Server 2008 R2. All servers in the domain run Windows Server 2016 Standard. The domain contains 300 client computers that run either Windows 8.1 or Windows 10. The domain contains nine servers that are configured as shown in the following table.

Server name	Configuration	Planned changes
Server1	Domain controller	None
Server2	File server	Run Failover Clustering and Storage Spaces Direct
Server3	File server	Run Failover Clustering and Storage Spaces Direct
Server4	Hyper-V host	Run shielded virtual machines
Server5	Hyper-V host	None
Server6	Member server	Run Active Directory Federation Services (AD FS)
VM1	Virtual machine hosted on Server 5	None
VM2	Virtual machine hosted on Server 5	None
VM3	Virtual machine hosted on Server 5	None

The virtual machines are configured as follows:

- Each virtual machine has one virtual network adapter.
- VM1 and VM2 are part of a Network Load Balancing (NLB) cluster.
- All of the servers on the network can communicate with all of the virtual machines. End of repeated scenario.

You create a new NLB cluster that contains VM3.

You need to ensure that VM2 can remain in the original cluster and be added to the new cluster. What should you do first?

- A. Add a new virtual network adapter to VM2.
- B. Install the Web Application Proxy server role on VM2 and VM3.
- C. Modify the default port rule.
- D. Change the cluster operation mode.

**Answer:** A

#### NEW QUESTION 168

HOTSPOT

You have four Hyper-V hosts named Server1, Server2, Server3 and Server4 that run Windows Server 2016. The hosts are nodes in a failover cluster.

The failover cluster is configured to balance virtual machines when a node is more than 80 percent loaded.

You need to configure the failover cluster to balance the virtual machines when the load of a node is more than five percent higher than the average for the nodes.

Which command should you run? To answer, select the appropriate options in the answer area.

### Answer Area

▼

Get-Cluster

Get-ClusterNode

Get-ClusterParameter

Get-ClusterResource

▼

AutoBalanceLevel=3

AutoBalancedMode=1

DynamicQuorum=1

MininumPreemptorPriority=5

- A. Mastered
- B. Not Mastered

**Answer:** A

**Explanation:**

### Answer Area

▼

Get-Cluster

Get-ClusterNode

Get-ClusterParameter

Get-ClusterResource

▼

AutoBalanceLevel=3

AutoBalancedMode=1

DynamicQuorum=1

MininumPreemptorPriority=5

#### NEW QUESTION 172

Your manager has asked you to configure the company Windows Server 2016 domain controller.

He wants all new computer accounts to be placed in the General OU, when computers join the domain.

Which command should you use to accomplish this?

- A. Dsmove
- B. Netdom
- C. Redircmp
- D. None of these

**Answer:** C

**Explanation:**

The Redircmp command is used to redirect the default OU of a newly created object such as a user to another OU.



#### NEW QUESTION 176

You have just finished installing Windows Server 2016 on a new server.

Your colleague has informed you that its essential that you must activate Windows Server. Which of the following command line tools can be used to Activate Windows Server?

- A. Netdom C:\windows\system32\slmgr.vbs -ato
- B. Netsh C:\windows\system32\slmgr.vbs -ato
- C. Ocsetup C:\windows\system32\slmgr.vbs -ato
- D. Cscript C:\windows\system32\slmgr.vbs -ato

**Answer: D**

#### Explanation:

The correct answer is Cscript C:\windows\system32\slmgr.vbs -ato

#### NEW QUESTION 181

Which terminology is being described below?

Time synchronization is critical for the proper operation of many Windows services and line- ofbusiness applications. The uses the Network Time Protocol (NTP) to synchronize computer clocks on the network so that an accurate clock value, or time stamp, can be assigned to network validation requests and resource access requests.

- A. Network Services Shell (Netsh)
- B. Listsvc
- C. Fixmbr
- D. Windows Time service (W32time)

**Answer: D**

#### Explanation:

The correct answer is Windows Time service (W32time)

#### NEW QUESTION 186

HOTSPOT

You have four servers named Server1, Server2, Server3, and Server4 that run Windows Server 2016. Server1 and Server2 are nodes in a failover cluster named FC1. Server3 and Server4 are nodes in a failover cluster named FC2.

You add the cluster roles shown in the following table.

Role name	Type	Failover cluster	Owner node
FS1(\FS1)	File server	FC1	Server1
FS2(\FS2)	Scale-Out File Server	FC2	Server3

You add a file share named Share1 to FS1. You add a file share named Share2 to FS2.

Which UNC paths can you use to access each share? To answer, select the appropriate options in the answer area.

NOTE: Each correct selection is worth one point.

## Answer Area

UNC path to access Share1:

▼

\\FS1\Share1 only

\\Server1\Share1 only

\\Server2\Share1 only

\\Server1\Share1 and \\Server2\Share1 only

\\Server1\Share1, \\Server2\Share1. and \\FS1\Share1

UNC path to access Share2:

▼

\\FS2\Share2 only

\\Server3\Share2 only

\\Server4\Share2 only

\\Server3\Share2 and \\Server4\Share2 only

\\Server1\Share2, \\Server4\Share2. and \\FS2\Share2

- A. Mastered
- B. Not Mastered

**Answer: A**

#### Explanation:

References:

<https://blogs.technet.microsoft.com/canitpro/2013/12/10/step-by-step-scale-out-file-shares-and-continuously-available-file-services/>

<https://robertsmit.wordpress.com/2018/02/21/clustering-fileserver-data-deduplication-on-windows-2016-step-by-step-sofs-winserv-refs-windowsserver2016-dedupe/>

#### NEW QUESTION 188

You have a server named Server1 that runs Windows Server 2016. Server1 has the Containers feature installed. You create a text file that contains the commands that will be used to automate the creation of new containers. You need to ensure that the commands in the text file are used when you create new containers. What should you name the file?

- A. Bootstrap.ini
- B. Config.ini
- C. Dockerfile
- D. Unattend.txt

**Answer:** C

#### NEW QUESTION 190

You have a Windows Server 2016 failover cluster that contains two servers named Server1 and Server2. The Cluster Service on Server1 fails. You need to identify the cause of the failure. What should you do?

- A. From Windows PowerShell, run the Get-ClusterNode cmdlet.
- B. From Event Viewer, review the Application event log.
- C. From Windows PowerShell, run the Get-ClusterLog cmdlet.
- D. From Event Viewer, review the System event log.

**Answer:** C

#### Explanation:

References: <https://blogs.msdn.microsoft.com/clustering/2015/05/14/windows-server-2016-failover-cluster-troubleshooting-enhancements-cluster-log/>

#### NEW QUESTION 195

You have a server named Server1 that runs Windows Server 2016. Server1 is a member of contoso.com. Server1 has the Hyper-V role installed. Virtual machines on Server1 are connected to an external switch named Switch1. You create a virtual machine named VM1 on Server1 by running the following cmdlets.

```
Add-VM VM1
Add-VMHardDiskDrive -VMName VM1 -ControllerType IDE -Path c:\VMs\Disk1.vhd
Add-VMNetworkAdapter -VMName VM1
```

You need to ensure that you can install the operating system on VM1 by using Windows Deployment Services. What should you do?

- A. Modify the SwitchType parameter of Switch1.
- B. Modify the DefaultFlowMinimumBandwidthWeight parameter of Switch1.
- C. Add a SCSI controller to VM1.
- D. Add a legacy network adapter to VM1.

**Answer:** D

#### NEW QUESTION 197

You have a Hyper-V host named Server1 that runs Windows Server 2016. Server1 hosts a virtual machine named VM1 that runs Windows Server 2016. You install the Hyper-V server role on VM1. You need to ensure that the virtual machines hosted on VM1 can communicate with the virtual machines hosted on Server1. What should you do?

- A. On Server1, run the Set-VmNetworkAdapterIsolation cmdlet and specify the –MultiTenantStack Off parameter.
- B. On VM1, run the Set-VMNetworkAdapter cmdlet and specify the –MacAddressSpoofing Off parameter.
- C. On VM1, run the Set-VmNetworkAdapterIsolation cmdlet and specify the –MultiTenantStack On parameter.
- D. On Server1, run the Set-VMNetworkAdapter cmdlet and specify the –MacAddressSpoofing On parameter.

**Answer:** C

#### Explanation:

References: <https://docs.microsoft.com/en-us/powershell/module/hyper-v/set-vmnetworkadapterisolation?view=win10-ps>

#### NEW QUESTION 201

Note: This question is part of a series of questions that present the same scenario. Each question in the series contains a unique solution that might meet the stated goals. Some question sets might

have more than one correct solution, while others might not have a correct solution. Your network contains an Active Directory forest

You install Windows Server 2016 on 10 virtual machines.

You need to deploy the Web Server (IIS) server role identically to the virtual machines.

Solution: From Windows System Image Manager, you create an answer file, you copy the file to C:\Sysprep on each virtual machine, and then you run the Apply-Image cmdlet.

Does this meet the goal?

- A. Yes
- B. No

Answer: B

NEW QUESTION 205

You have two Hyper-V hosts named Server1 and Server2 that run Windows Server 2016. The hosts are nodes in failover cluster. You have a virtual machine named VM1. VM1 connects to a virtual switch named vSwitch1. You discover that VM1 automatically live migrates when vSwitch temporarily disconnects. You need to prevent VM1 from being live migrated when vSwitch1 temporarily disconnects. What should you do?

- A. Run the Set-VMNetworkAdapter cmdlet and set StormLimit to 0.
- B. From the network adapter setting of VM1, disable the Heartbeat integration service.
- C. Run the Set-VMNetworkAdapter cmdlet and set IsManagementOS to False.
- D. From the network adapter setting of VM1, disable the Protected network setting.

Answer: D

NEW QUESTION 209

DRAG DROP

You have a server named Server1 that runs Windows Server 2016. On Server1, you create a Nano Server image named Disk1.vhdx. You need to start Server1 by using Disk1.vhdx.

Which three actions should you perform in sequence? To answer, move the appropriate actions from the list of actions to the answer area and arrange them in the correct order.

Actions

Restart Server1.

Run the bcdboot.exe command.

Run the bootcfg.exe command.

Run the Edit-NanoServerImage cmdlet.

Mark a partition as active.

Mount Disk1.vhdx.

Answer Area

<

>

↑

↓

- A. Mastered
- B. Not Mastered

Answer: A

Explanation:



## Actions

Restart Server1.

Run the bcdboot.exe command.

Run the bootcfg.exe command.

Run the Edit-NanoServerImage cmdlet.

Mark a partition as active.

Mount Disk1.vhdx.

## Answer Area

Mount Disk1.vhdx.

Run the bootcfg.exe command.

Restart Server1.



### NEW QUESTION 210

Note: This question is part of a series of questions that present the same scenario. Each question in the series contains a unique solution that might meet the stated goals. Some question sets might have more than one correct solution, while others might not have a correct solution.

After you answer a question in this section, you will NOT be able to return to it. As a result, these questions will not appear in the review screen.

You network contains an Active Directory domain named contoso.com.

You need to create a Nano Server image named Nano1 that will be used as a virtualization host. The Windows Server 2016 source files are located in drive D.

Solution: You run the following cmdlet.

```
New-NanoServerImage -Edition Datacenter -DeploymentType Host -Compute
-MediaPath 'D:\' -TargetPath C:\Nano1\Nano1.wim -ComputerName Nano1
-DomainName Contoso.com
```

Does this meet the goal?

- A. Yes
- B. No

Answer: A

### NEW QUESTION 211

Note: This question is part of a series of questions that present the same scenario. Each question in the series contains a unique solution that might meet the stated goals. Some question sets might have more than one correct solution, while others might not have a correct solution.

After you answer a question in this section, you will NOT be able to return to it. As a result, these questions will not appear in the review screen.

You network contains an Active Directory domain named contoso.com.

You need to create a Nano Server image named Nano1 that will be used as a virtualization host. The Windows Server 2016 source files are located in drive D.

Solution: You run the following cmdlet.

```
New-NanoServerImage -Edition Datacenter -DeploymentType Host -Package
Microsoft-NanoServer-SCVMM-Package -MediaPath 'D:\' -TargetPath
C:\Nano1\Nano1.wim -ComputerName Nano1 -DomainName Contoso.com
```

Does this meet the goal?

- A. Yes
- B. No

Answer: B

### NEW QUESTION 214

Note: This question is part of a series of questions that present the same scenario. Each question in the series contains a unique solution that might meet the stated goals. Some question sets might have more than one correct solution, while others might not have a correct solution.

After you answer a question in this section, you will NOT be able to return to it. As a result, these questions will not appear in the review screen.

After you answer a question in this section, you will NOT be able to return to it. As a result, these questions will not appear in the review screen.

Your network contains an Active Directory domain. The domain contains a new file server named Server1 that runs a Server Core installation of Windows Server 2016.

Server I has an ReFS-formatted volume D: and an NTFS-formatted volume E:. the- volumes do not contain any data.  
You Install the Data Deduplication role service on Server I.  
You need to implement Data Deduplication for volumes on D: and E:.  
Solution; From Windows PowerShell. you run Format-Volume D: -FileSystem NTFS and Enable- DeDupVolume-Volume D:;E:.  
Does this meet the goal?

- A. Yes
- B. No

**Answer:** A

#### NEW QUESTION 217

Note: This question is part of a Series of questions that use the same or similar answer choices. An answer choice may be correct for more than one question in the series. Each question is Independent of the other questions in this series. Information and details provided in a question apply only to that question.  
You have two servers named Server 1 and Server 2 that run Windows Server 2016. Server 1 and server 2 have the Hyper-V server role installed and are nodes in a failover Cluster.  
On Server 1, an administrator creates a virtual machine named VM1. You need to configure VM1 for high availability.  
Which tool should you use?

- A. the clussvc.exe command
- B. the cluster.exe command
- C. the Computer Management snap-in
- D. the configurehyperv.exe command
- E. the Disk Management snap-in
- F. the Failover Cluster Manager snap-in
- G. the Hyper V Manage snap-in
- H. the Server Manager app

**Answer:** F

#### NEW QUESTION 221

Your network contains an Active Directory domain named contoso.com. All servers run Windows Server 2016. As a domain administrator, you log on to a server named Server2 and open Windows Power Shell. You need to establish an interactive Power Shell session to a server named Server 1- Which command should you run?

- A. Enable-PSRemoting Server 1
- B. Enter-PSSession -ComputerName Server
- C. New-PSSession -Name Server
- D. Set-PSSession Configuration -AccessMode Remote -Name Server

**Answer:** B

#### NEW QUESTION 226

You have Nano Server image named Disk1.vhdx.  
You mount Disk1.vhdx.  
You need to add a folder that contains several files to the image. Which tool or cmdlet should you use?

- A. File Explorer.
- B. Add-Windows Image
- C. Nano Server Image Builder
- D. Server Manager

**Answer:** D

#### NEW QUESTION 227

DRAG DROP

Note: This question is part of a series of questions that use the same scenario. For your convenience, the scenario is repeated in each question. Each question presents a different goal and answer choices, but the text of the scenario is exactly the same in each question in this series.  
A company named Contoso, Ltd. has several servers that run Windows Server 2016. Contoso has a Hyper-V environment that uses failover clustering and Windows Server Update Services (WSUS). The environment contains several Windows containers and several virtual machines.  
The WSUS deployment contains one upstream server that is located on the company's perimeter network and several downstream servers located on the internal network. A firewall separates the upstream server from the downstream servers.  
You plan to deploy a human resources application to a new server named HRServer5. HRServer5 contains a FAT32-formatted data volume.  
The CIO of Contoso identifies the following requirements for the company's IT department: Deploy a failover cluster to two new virtual machines.  
Store all application databases by using Encrypted File System (EFS).  
Ensure that each Windows container has a dedicated IP address assigned by a DHCP server.  
Produce a report that lists the processor time used by all of the processes on a server named Server1 for five hours.  
Encrypt all communication between the internal network and the perimeter network, including all WSUS communications.  
Automatically load balance the virtual machines hosted in the Hyper-V cluster when processor utilization exceeds 70 percent.  
You need to configure the storage solution for the planned failover cluster.  
You create two new generations of two virtual machines on two separate Hyper-V hosts named VM11 and VM12.  
Which three actions should you perform in sequence next? To answer, move the appropriate actions from the list of actions to the answer area and arrange them in the correct order.

Actions

For each virtual machine, create a new system disk that uses the VNDX format and store the disks in Share1.

Create a VHDX file and store the file in the Clustered Shared Volume (CSV).

For each virtual machine, create a new system disk that uses the VHDX format and store the virtual machines on the Cluster Shared Volume (CSV).

Create a network share named Share1.

Create a Clustered Shared Volume (CSV).

To each virtual machine, add the VHDX file as a shared drive.

Answer Area

1

<

2

>

>

3

- A. Mastered
- B. Not Mastered

Answer: A

Explanation:

Actions

For each virtual machine, create a new system disk that uses the VNDX format and store the disks in Share1.

Create a network share named Share1.

To each virtual machine, add the VHDX file as a shared drive.

Answer Area

1

Create a Clustered Shared Volume (CSV).

<

2

>

For each virtual machine, create a new system disk that uses the VHDX format and store the virtual machines on the Cluster Shared Volume (CSV).

>

3

Create a VHDX file and store the file in the Clustered Shared Volume (CSV).

NEW QUESTION 231

Note This question is part of a series of questions that use the same scenario. For your convenience,



the scenario is repeated in each question. Each question presents a different goal and answer choices, but the text of the scenario is exactly the same in each question in this series.

Start of Repeated Scenario:

A company named Contoso, Ltd. has several servers that run Windows Server 2016. Contoso has a Hyper-V environment that uses failover clustering and Windows Server Update Services (WSUS). The environment contains several Windows containers and several virtual machines.

The WSUS deployment contains one upstream server that is located on the company's perimeter network and several downstream servers located on the internal network. A firewall separates the upstream server from the downstream servers.

You plan to deploy a human resources application to a new server named HRServer5. HRServer5 contains a FAT32-formatted data volume.

The CIO of Contoso identifies the following requirements for the company's IT department:

- Deploy failover cluster to two new virtual machines.
- Store all application databases by using Encrypted File System (EFS).
- Ensure that each Windows container has a dedicated IP address assigned by a DHCP server
- Produce a report that lists the processor time used by all of the processes on a server named Server 1 for five hours.

Encrypt all communication between the internal network and the perimeter network, including all WSUS communications.

- Automatically load balance the virtual machines hosted in the Hyper-V cluster when processor utilization exceeds 70 percent.

End of Repeated Scenario.

You need to modify the Hyper-V cluster to meet the load balancing requirement for the virtual machine. Which command should you run?

- A. network address translation (NAT)
- B. I2bridge
- C. I2tunnel
- D. transparent

**Answer:** A

### NEW QUESTION 236

Note: This question is part of a series of questions that present the same scenario. Each question in the series contains a unique solution that might meet the stated goals. Some question sets might have more than one correct solution, while others might not have a correct solution.

After you answer a question in this section, you will NOT be able to return to it. As a result, these questions will not appear in the review screen.

You have a server named Server1 that runs Windows Server 2016. Server1 is a Docker Host.

You are creating a Dockerfile to build 3 Docker images.

You need to add a file named File1.txt from Server1 to C:\folder1\ in the Docker image.

What are two possible commands that you can use to achieve the goal? Each correct answer presents a complete solution.

NOTE: Each correct selection is worth one point.

- A. COPY file1.txt c:/folder1/
- B. copy-item file1.txt folder1\file1.txt
- C. ROBOCOPY file.txt \folder1\
- D. XCOPY file1.txt c:\folder1\
- E. ADD file1.txt /folder1/

**Answer:** AE

### NEW QUESTION 240

Your network contains an Active Directory domain.

The domain contains two Hyper-V hosts.

You plan to perform live migrations between the hosts.

You need to ensure that the live migration traffic is authenticated by using Kerberos. What should you do first?

- A. From Server Manager, install the Host Guardian Service server role on a domain controller.
- B. From Active Directory Users and Computers, add the computer accounts for both servers to the Cryptographic Operators group.
- C. From Active Directory Users and Computers, modify the Delegation properties of the computer accounts for both servers.
- D. From Server Manager, install the Host Guardian Service server role on both servers.

**Answer:** C

### Explanation:

If you have decided to use Kerberos to authenticate live migration traffic, configure constrained delegation before you proceed to the rest of the steps.

### NEW QUESTION 243

You have a Windows Server 2016 failover cluster named Ousted that contains three nodes named

Server1, Server2, and Server3. Each node hosts several virtual machines. The virtual machines are configured to fail over to another node in Ousted if the hosting node fails.

You need to ensure that if the Cluster service fails on one of the nodes, the virtual machine of that node will fail over immediately.

Which setting should you configure?

- A. failureConditionLevel
- B. QuarantineDuration
- C. ResiliencyPeriod
- D. ResiliencyLevel

**Answer:** B

### NEW QUESTION 244

You have two Hyper-V hosts named Server1 and Server2 that run Windows Server 2016. The hosts are nodes in a failover cluster.

A highly available virtual machine named VM1 is running on Server1. You need to move VM1 to Server2 while minimizing downtime.

What should you do?

- A. From Windows PowerShell, run Move-ClusterGroup

- B. From Hyper-V Manager, use the Move action.
- C. From Failover Cluster Manager, use the Move Virtual Machine Storage option.
- D. From Windows PowerShell, run Move-VM.

**Answer:** A

#### NEW QUESTION 246

You have a server named Server1 that is an iSCSI target. You have a server named Server2 that runs Windows Server 2016. Server2 has an iSCSI disk named Disk1 that is hosted on Server1. Disk1 contains one volume that is assigned a drive letter of E. You need to increase the size of Disk1. What should you do?

- A. Run the Resize-IscsiVirtualDisk cmdlet and specify the -ComputerName Server2 parameter.
- B. Run the Resize-IscsiVirtualDisk cmdlet and specify the -ComputerName Server1 parameter.
- C. Run the Resize-Partition cmdlet and specify the -ComputerName Server1 parameter.
- D. Run the Resize- Partition cmdlet and specify the -ComputerName Server2 parameter.

**Answer:** B

#### Explanation:

The Resize-IscsiVirtualDisk cmdlet resizes a virtual disk either by expanding or compacting an existing virtual disk.

The -ComputerName parameter specifies the computer name, or IP address, of the remote computer, if this cmdlet is run on a remote computer. If you do not specify a value for this parameter, the cmdlet uses the local computer.

#### NEW QUESTION 248

You have a server named Server1 that runs Windows Server 2016. The Docker daemon run on Server1.

You need to ensure that members of a security group named Docker Administrators administer Docker. What should you do?

- A. Run the Set-Service cmdlet.
- B. Run the sc config command.
- C. Modify the Security settings of Docker
- D. Modify the Security settings of Docker.exe.

**Answer:** B

#### Explanation:

<https://docs.microsoft.com/en-us/virtualization/windowscontainers/manage-docker/configure-docker-daemon>

#### NEW QUESTION 250

You have a Hyper-V host named Server1 that runs Windows Server 2016. Server1 has an external virtual switch named Switch1. Server1 hosts a virtual machine named VM1 that runs Windows Server 2016. VM1 has one network adapter. The network adapter connects to Switch1.

You need to limit the maximum network bandwidth available to VM1 to 100 Mbps. The solution must limit the bandwidth for VM1 only.

Which cmdlet should you run?

- A. Set-NetAdapter
- B. Set-VMNetworkAdapter
- C. Set-VM
- D. Set-NetAdapterVmq
- E. Set-NetworkSwitchPortProperty

**Answer:** B

#### Explanation:

The Set-VMNetworkAdapterVlan cmdlet configures virtual LAN settings for the traffic through a virtual network adapter.

#### NEW QUESTION 254

NOTE: This Question is a part of a series of questions that use the same or similar answer choices. An answer choice may be correct for more than one question in the series. Each question is independent of the other questions in this series. Information and details provided in a question apply only to that question.

You have a Hyper-V host named server 1 that runs Windows Server 2016 and a two-node scale-out file server cluster named Cluster1.

You need to migrate the storage on VM1 to Cluster1. Which tool should you use?

- A. the clussvc.exe command
- B. the Cluster.exe command
- C. the Computer Management snap-in
- D. the configure hyperv.exe command
- E. the Disk Management snap-in
- F. the Failover Cluster Manager snap-in
- G. the Hyper-V Manager snap-in
- H. the Server Manager app

**Answer:** G

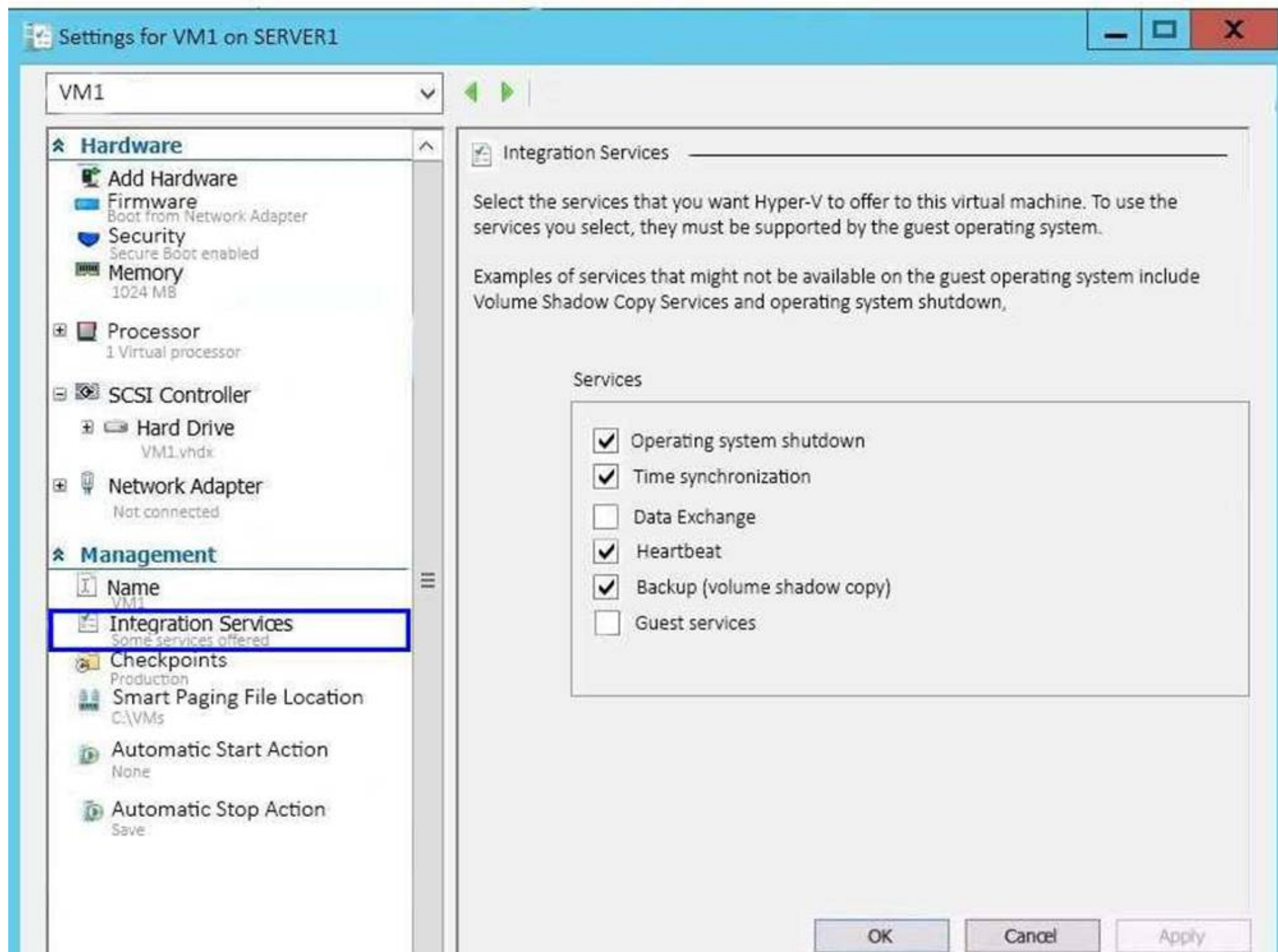
#### NEW QUESTION 258

Note: This question is part of a series of questions that present the same scenario. Each question in the series contains a unique solution that might meet the stated goals. Some question sets might have more than one correct solution, while others might not have a correct solution.

After you answer a question in this section, you will NOT be able to return to it. As a result, these questions will not appear in the review screen.

You have a Hyper-V host named Server1 that hosts a virtual machine named VM1. Server1 and VM1 run Windows Server 2016.

The settings for VM1 are configured as shown in the exhibit. (Click the Exhibit button.)



You need to ensure that you can use the Copy-VMFile cmdlet on Server1 to copy files from VM1. Solution: You enable the Guest services integration service for VM1.

Does this meet the goal?

- A. Yes
- B. No

**Answer:** A

**Explanation:**

References: [https://technet.microsoft.com/en-us/library/dn798297\(v=ws.11\).aspx](https://technet.microsoft.com/en-us/library/dn798297(v=ws.11).aspx)

## NEW QUESTION 260

### HOTSPOT

Your network contains an Active Directory domain named contoso.com. The domain contains three clusters named FC1, FC2, and FC3. The domain contains servers that run Windows Server 2016. The servers are configured as shown in the following table.

Server name	CPU	Memory	Cluster
Server1	Intel Xeon E3	128 GB	FC1
Server2	Intel Xeon E3	128 GB	FC1
Server3	Intel Xeon E3	64 GB	FC2
Server4	Intel Xeon E3	64 GB	FC2
Server5	AMD Opteron	256 GB	FC3
Server6	AMD Opteron	256 GB	FC3

Server1 hosts a highly available virtual machine named VM1.

You are creating a maintenance plan for the servers, and you are evaluating how to move VM1 to the different clusters.

You need to identify the fastest method to move VM1 to FC2 and FC3.

Which method should you identify for each cluster? To answer, select the appropriate options in the answer area.

NOTE: Each correct selection is worth one point.



Answer Area

Fastest method to move VM1 to FC2:

Export and import
Live migration
Quick migration

Fastest method to move VM1 to FC3:

Export and import
Live migration
Quick migration

- A. Mastered
- B. Not Mastered

Answer: A

Explanation:  
References: <https://www.petri.com/move-virtual-machine-between-hyper-v-hosts>

NEW QUESTION 263

HOTSPOT  
You have a server named Server1 that runs Windows Server 2016.  
On Server1, you plan to create a new volume named Volume1. Volume1 will contain image files.  
You need to identify which file system and which cluster size to configure for Volume1. The solution must ensure that the image files will be compressed by using file system compression.  
Which file system and cluster size should you identify? To answer, select the appropriate options in the answer area.  
NOTE: Each correct selection is worth one point.

Answer Area

File system:

exFAT
FAT32
NTFS
ReFS

Cluster size:

4K
8K
64K

- A. Mastered

B. Not Mastered

**Answer:** A

**Explanation:**

### Answer Area

File system:

	▼
exFAT	
FAT32	
NTFS	
ReFS	

Cluster size:

	▼
4K	
8K	
64K	

### NEW QUESTION 268

You have a file server named Server1 that runs Windows Server 2016. Object access auditing is configured on Server1. You need to filter the Security event log to show all log entries that relate to a user named User1. What should you do?

- A. Right-click the Security log, and then click Filter Current Log... On the Filter tab, type a value in the User box.
- B. Right-click the Security log, and then click Filter Current Log... On the Filter tab, select a value from the Event sources box.
- C. Right-click the Security log, and then click Create Custom View... On the Filter tab, type a value in the User box.
- D. Right-click the Security log, and then click Filter Current Log... On the XML tab, modify the QueryList entry and set an EventData tag.

**Answer:** A

**Explanation:**

Right clicking the event log name and selecting the "Filter Current Log" will display various options for filtering the event log. These options are:

References: <https://blogs.technet.microsoft.com/rmilne/2014/08/06/quick-tip-event-viewer-filtering/>

### NEW QUESTION 271

DRAG DROP

You have a server named Server1 that runs Windows Server 2016. Server1 has the Hyper-V server role installed and hosts a virtual machine named VM1. Server1 has an NVMe storage device. Currently, the device is assigned to VM1 through a Discrete Device Assignment. You need to make the storage device available to Server1.

Which four actions should you perform in sequence? To answer, move the appropriate actions from the list of actions to the answer area and arrange them in the correct order.

## Actions

## Answer Area

Run the Remove-VMAssignableDevice cmdlet.

Run the Mount-VMHostAssignableDevice cmdlet.

Stop VM1.

Enable the device in Device Manager.

Disable the device in Device Manager.

- A. Mastered  
 B. Not Mastered

Answer: A

### Explanation:

If you want to return the device back to its original state, you will need to stop the VM and issue the following cmdlets:

Remove-VMAssignableDevice Mount-VMHostAssignableDevice

You can then re-enable the device in device manager.

References: <https://docs.microsoft.com/en-us/windows-server/virtualization/hyper-v/deploy/deploying-storage-devices-using-dda#removing-a-device-and-returning-it-to-the-host>

### NEW QUESTION 275

Note: This question is part of a series of questions that present the same scenario. Each question in the series contains a unique solution that might meet the stated goals. Some question sets might have more than one correct solution, while others might not have a correct solution.

After you answer a question in this section, you will NOT be able to return to it. As a result, these questions will not appear in the review screen.

Your network contains an Active Directory forest named contoso.com. The forest contains a child domain named eu.contoso.com.

You plan to implement live migration between two Hyper-V hosts that run Windows Server 2016. The hosts are configured as shown in the following table.

Host name	Configuration
Host1	<ul style="list-style-type: none"> <li>Is a member of the contoso.com domain</li> <li>Uses an Intel Xeon processor released in 2012</li> <li>Has an external virtual switch named Switch1</li> <li>Hosts a virtual machine named VM1 that connects to Switch1</li> </ul>
Host2	<ul style="list-style-type: none"> <li>Is a member of the eu.contoso.com domain</li> <li>Uses an Intel Xeon processor released in 2016</li> <li>Has an external virtual switch named Switch1</li> </ul>

You need to ensure that you can perform a live migration of VM1 from Host1 to Host2.

Solution: You shut down VM1, configure the processor compatibility settings, and then start VM1. Does this meet the goal?

- A. Yes  
 B. No

Answer: A

### NEW QUESTION 280

Note: This question is part of a series of questions that present the same scenario. Each question in the series contains a unique solution that might meet the stated goals. Some question sets might have more than one correct solution, while others might not have



a correct solution.

After you answer a question in this section, you will NOT be able to return to it. As a result, these questions will not appear in the review screen.

You network contains an Active Directory forest named contoso.com. The forest contains a child domain named eu.contoso.com.

You plan to implement live migration between two Hyper-V hosts that run Windows Server 2016. The hosts are configured as shown in the following table.

Host name	Configuration
Host1	<ul style="list-style-type: none"> <li>Is a member of the contoso.com domain</li> <li>Uses an Intel Xeon processor released in 2012</li> <li>Has an external virtual switch named Switch1</li> <li>Hosts a virtual machine named VM1 that connects to Switch1</li> </ul>
Host2	<ul style="list-style-type: none"> <li>Is a member of the eu.contoso.com domain</li> <li>Uses an Intel Xeon processor released in 2016</li> <li>Has an external virtual switch named Switch1</li> </ul>

You need to ensure that you can perform a live migration of VM1 from Host1 to Host2.

Solution: On Host1 and Host2, you create a private switch named Priv1, and then you connect VM1 to Priv1.

Does meet the goal?

A. Yes

B. No

Answer: B

#### NEW QUESTION 283

DRAG DROP

Your network contains an Active Directory domain named contoso.com. The domain contains a server named Server1 that runs Windows Server 2016.

Server1 allows inbound connectivity from all computers in the contoso.com domain. Server1 has an IP address of 192.168.0.10.

Server1 hosts a Windows container named Container1. Container1 hosts a website that is accessible on port 80.

You need to ensure that you can use the Docker client to manage Container1 from any computer in the domain.

Which three cmdlets should you run in sequence? To answer, move the appropriate cmdlets from the list of cmdlets to the answer area and arrange them in the correct order.

#### Actions

#### Answer Area

Restart-Service docker

New-ContainerNetwork- Name nat1 – Mode NAT- SubnetPrefix 192.168.0.0/24 – GatewatAddress 192.168.0.10

Add-Content 'c:\programdata\docker\config\daemon.json' '{"hosts": [{"tcp://127.0.0.1:80", "npip: //"} ]}'

Add-Content 'c:\programdata\docker\config\daemon.json' '{"hosts": [{"tcp://0.0.0.0:2375", "npip: //"} ]}'

New-Item-Type File c:\programData\docker\config\daemon.json



A. Mastered

B. Not Mastered

Answer: A

Explanation:

References:

<https://glennsarti.github.io/blog/getting-started-with-windows-containers/> <https://docs.microsoft.com/en-us/virtualization/windowscontainers/manage->

NEW QUESTION 288

Note: This question is part of a series of questions that present the same scenario. Each question in the series contains a unique solution that might meet the stated goals. Some question sets might have more than one correct solution, while others might not have a correct solution. After you answer a question in this section, you will NOT be able to return to it. As a result, these questions will not appear in the review screen. You network contains an Active Directory forest named contoso.com. The forest contains a child domain named eu.contoso.com. You plan to implement live migration between two Hyper-V hosts that run Windows Server 2016. The hosts are configured as shown in the following table.

Host name	Configuration
Host1	<ul style="list-style-type: none"><li>Is a member of the contoso.com domain</li><li>Uses an Intel Xeon processor released in 2012</li><li>Has an external virtual switch named Switch1</li><li>Hosts a virtual machine named VM1 that connects to Switch1</li></ul>
Host2	<ul style="list-style-type: none"><li>Is a member of the eu.contoso.com domain</li><li>Uses an Intel Xeon processor released in 2016</li><li>Has an external virtual switch named Switch1</li></ul>

You need to ensure that you can perform a live migration of VM1 from Host1 to Host2.  
Solution: You replace the processor in Host1 with a processor that is identical to the processor in Host2.  
Does meet the goal?

- A. Yes
- B. No

Answer: B

NEW QUESTION 290

HOTSPOT  
You have a Hyper-V host named Server1 that runs Windows Server 2016 datacenter. Server1 is activated.  
On Server1, you deploy a virtual machine named VM1 that has a Server Core installation of Windows Server 2016 Standard.  
You need to activate VM1 by using Automatic Virtual Machine Activation (AVMA).  
Which command should you run? To answer, select the appropriate options in the answer area. NOTE: Each correct selection is worth one point.

Answer Area

reg.exe  
regsvr32.exe  
setup.exe  
Set-VM  
Set-WindowsProductKey  
slmgr.vbs

/ipk  
/pkey  
/rearm  
/unattend:PID=  
-ProductKey

C3RCX-M6NRP-6CXC9-TW2F2-4RHYD

- A. Mastered
- B. Not Mastered

Answer: A

Explanation:  
References: <https://blogs.technet.microsoft.com/askcore/2013/11/13/activating-virtual-machines- via-automatic-virtual-machine-activation-in-windows-server-2012-r2/>

NEW QUESTION 293

You have a Network Load Balancing (NLB) cluster that contains two nodes named Server1 and Server2. The nodes run Windows Server 2016. The NLB cluster has the following configuration.



```

ClusterName      :
IPAddress        : 172.16.4.1
Name             :
ClusterIPAddress : 172.16.4.1
ClusterNetworkMask : 255.255.0.0
ClusterMacAddress : 02-bf-ac-10-04-01
OperationMode    : UNICAST
BdaReverseHash   : False
BdaTeamActive    : False
BdaTeamId        :
BdaTeamMaster    : False

IPAddress State Start End Protocol Mode Affinity Timeout
-----
All Enabled 0 65535 Both Multiple Single 0

```

You deploy the Web Server (IIS) server role identically to both servers.  
 You need to configure NLB to load balance requests between the web servers. HTTP requests must be stateless. HTTPS requests must be stateful.  
 What should you do? Each correct answer presents part of the solution.

- A. Modify the Cluster operation mode.
- B. Suspend the cluster.
- C. Drainstop the cluster.
- D. Add a new port rule.
- E. Edit the existing port rule.

**Answer:** CD

**Explanation:**

References:  
<https://www.ntweekly.com/2017/09/04/failover-nlb-cluster-host-member/> <https://docs.microsoft.com/en-us/windows-server/networking/technologies/network-load-balancing>

#### NEW QUESTION 297

You have a server named Server1 that runs Windows Server 2016. Windows Defender is enabled on Server1.  
 Server1 runs an application named App1 that stores various types of files in Microsoft OneDrive for Business, MicrosoftOneDrive, and Microsoft SharePoint Online. App1 also interacts with several local services.  
 You need to prevent Windows Defender from scanning any files opened by App1. What should you do on Server1?

- A. Run the Set-ExecutionPolicy cmdlet.
- B. Run the New-AppLockerPolicy cmdlet.
- C. Modify the real-time protection settings in Windows Defender.
- D. Run the Add-MpPreference cmdlet.

**Answer:** D

**Explanation:**

References:  
<https://docs.microsoft.com/en-us/windows/security/threat-protection/windows-defender-antivirus/configure-proc>

#### NEW QUESTION 301

You have a Hyper-V host named Server1 that runs Windows Server 2016. Server1 hosts a virtual machine named VM1 that runs Windows Server 2012. VM1 has the following configuration.



```
C:\>Get-VM VM1 | fl Version, HardDrives, DynamicMemoryEnabled, Generation, MemoryStartup
```

```
Version           : 5.0
HardDrives        :{(Hard drive on IDE controller number 0 at location 0)}
DynamicMemoryEnabled :False
Generation        :1
MemoryStartup     : 536870912
```

```
C:\>Get-VMIntegrationService VM1
```

VMName	Name	Enabled	PrimaryStatusDescription	SecondaryStatusDescription
VM1	Guest Service Interface	False	OK	
VM1	Heartbeat	False	OK	
VM1	Key-Value Pair Exchange	False	OK	
VM1	Shutdown	False	OK	
VM1	Time Synchronization	False	OK	
VM1	VSS	False	OK	

You discover that when you back up Server1, VM1 temporarily pauses.

You need to ensure that you can back up Server1 without causing downtime on VM1. What should you do?

- A. Increase the memory on VM1
- B. Connect the hard disk drive of VM1 to an SCSI controller
- C. Update the virtual machine version of VM1
- D. Upgrade VM1 to Windows Server 2016
- E. Enable the VSS integration service on VM1

**Answer:** E

**Explanation:**

References:

<https://www.starwindsoftware.com/blog/hyper-v-backup-challenges-windows-server-2016-needs-to-address>

#### NEW QUESTION 303

.....

## THANKS FOR TRYING THE DEMO OF OUR PRODUCT

Visit Our Site to Purchase the Full Set of Actual 70-740 Exam Questions With Answers.

We Also Provide Practice Exam Software That Simulates Real Exam Environment And Has Many Self-Assessment Features. Order the 70-740 Product From:

<https://www.2passeasy.com/dumps/70-740/>

## Money Back Guarantee

### 70-740 Practice Exam Features:

- \* 70-740 Questions and Answers Updated Frequently
- \* 70-740 Practice Questions Verified by Expert Senior Certified Staff
- \* 70-740 Most Realistic Questions that Guarantee you a Pass on Your FirstTry
- \* 70-740 Practice Test Questions in Multiple Choice Formats and Updatesfor 1 Year