

Exam Questions 70-740

Installation, Storage, and Compute with Windows Server 2016

<https://www.2passeasy.com/dumps/70-740/>



NEW QUESTION 1

You have four servers named Server1, Server2, Server3, and Server4 that run Windows Server 2016.

Server1 and Server2 have the Hyper-V server role installed. Server1 hosts a virtual machine named VM1. Server2 hosts a virtual machine named VM2. Server3 hosts the disks and the configurations of both virtual machines on an SMB share named VMShare.

You use Server4 to manage Hyper-V operations on Server1 and Server2.

From Server4, you attempt to perform a live migration of VM1 and VM2, but you receive the following error message: "No credentials are available in the security package".

You need to ensure that you can perform the live migration of VM1 and VM2 between Server1 and Server2 while signed in to Server4.

What should you do?

- A. From Active Directory Users and Computers, modify the properties of Server4. Configure the delegation settings to trust the computer for delegation of cifs.
- B. From Windows PowerShell on Server3, run the remove-SMBMultiChannelConstraint cmdlet, and then assign Server4 Full Control permissions to VMShare.
- C. From Active Directory Users and Computers, modify the properties of Server1 and Server2. Configure the Delegation settings to trust the computers for delegation of the Microsoft Virtual System Migration Service.
- D. From Active Directory Users and Computers, modify the properties of your user account.
- E. Modify the Account is sensitive and cannot be delegated setting.

Answer: C

Explanation:

References: <https://docs.microsoft.com/en-us/windows-server/virtualization/hyper-v/deploy/set-up-hosts-for-live-migration-without-failover-clustering>

NEW QUESTION 2

Note: This question is part of a series of questions that present the same scenario. Each question in the series contains a unique solution that might meet the stated goals. Some question sets might have more than one correct solution, while others might not have a correct solution.

After you answer a question in this section, you will NOT be able to return to it. As a result, these questions will not appear in the review screen.

You have a server named Server1 that runs Windows Server 2016. Server1 has the Hyper-V server role and Docker installed.

You pull the Microsoft/iis Docker image to Server1.

You need to view the available space in the Microsoft/iis Docker image. Solution: You run the command `docker run -d Microsoft/iis`.

You open Disk Management on Server1. Does this meet the goal?

- A. Yes
- B. No

Answer: B

NEW QUESTION 3

Note: This question is part of a series of questions that present the same scenario. Each question in

the series contains a unique solution that might meet the stated goals. Some question sets might have more than one correct solution, while others might not have a correct solution.

After you answer a question in this section, you will NOT be able to return to it. As a result, these questions will not appear in the review screen.

You have two servers that run Windows Server 2016.

You have a server named Server1 that runs Windows Server 2016. Server1 has the Hyper-V server role and Docker installed.

You pull the Microsoft/iis Docker image to Server1.

You need to view the available space in the Microsoft/iis Docker image. Solution: You run the following commands.

`docker run --name container1 --isolation hyperv -d Microsoft/iis docker exec -i container1 cmd.exe dir`

Does this meet the goal?

- A. Yes
- B. No

Answer: B

NEW QUESTION 4

Note: This question is part of a series of questions that present the same scenario. Each question in the series contains a unique solution that might meet the stated goals. Some question sets might have more than one correct solution, while others might not have a correct solution.

After you answer a question in this section, you will NOT be able to return to it. As a result, these questions will not appear in the review screen.

You have two servers that run Windows Server 2016.

You have a server named Server1 that runs Windows Server 2016. Server1 has the Hyper-V server role and Docker installed.

You pull the Microsoft/iis Docker image to Server1.

You need to view the available space in the Microsoft/iis Docker image. Solution: You run the following commands.

`docker run --name container1 -d Microsoft/iis docker exec -i container1 cmd.exe`

`dir`

Does this meet the goal?

- A. Yes
- B. No

Answer: A

Explanation:

References: https://docs.docker.com/engine/reference/commandline/container_exec/#options <https://www.windows-commandline.com/get-file-size-directory-size-command/>

NEW QUESTION 5

You have two Hyper V hosts named Server1 and Server2 that run Windows Server 2012 R2. The servers are nodes in a failover cluster named Cluster1.

You perform a rolling upgrade of the cluster nodes to Windows Server 2016.

You need to ensure that you can implement the Virtual Machine Load Balancing feature. Which cmdlet should you use?

- A. Update-ClusterNetWorkNameResource
- B. Set-GusterGroupSet
- C. Update-ClusterFunctionalLevel
- D. Set-CauClosterRole

Answer: C

Explanation:

<https://docs.microsoft.com/en-us/windows-server/failover-clustering/cluster-operating-system-rollingupgrade#cluster-os-rolling-upgrade-process>

NEW QUESTION 6

You have a Hyper-V host named Server1 that runs Windows Server 2016. Server1 hosts a virtual machine named VM1 that runs Windows Server 2016. On VM1, Dynamic Memory is disabled, MAC spoofing is enabled for the virtual network adapter, and checkpoints are disabled. You need to ensure that you can install the Hyper-V server role on VM1. What should you do?

- A. Shut down VM1, enable Dynamic Memory on VM1 and then start VM1.
- B. Configure VM1 to use standard checkpoints.
- C. Disable Hyper-V integration services for VM1 and then restarts VM1.
- D. Shut down VMI, run the Set-VMProcessor cmdlet and then start VM1.

Answer: D

Explanation:

References:

<https://docs.microsoft.com/en-us/virtualization/hyper-v-on-windows/user-guide/nested- virtualization>

NEW QUESTION 7

You have a server named Server1 that runs Windows Server 2016 and has the File and Storage Services server role installed. Server1 has an ReFS-formatted volume named Volume1 that is 512 GB. Volume1 is mounted as C:\App1\temp. You need to ensure that you can enable deduplication of Volume1. What should you do?

- A. Initialize the physical disk that contains Volume1.
- B. Install a Windows feature.
- C. Format Volume1.
- D. Unmount Volume1.

Answer: B

NEW QUESTION 8

DRAG DROP

Your network contains an Active Directory domain named adatim.com. The domain contains four member servers that run Windows Server 2016.

On each server, you locally attach three disks and install the Failover Clustering feature. You need to create a volume that uses all the disks. The volume must be highly available.

Which three cmdlets should you run in sequence? To answer, move the appropriate cmdlets from the list of cmdlets to the answer area and arrange them in the correct order.

Cmdlets

Answer Area

New-Cluster

Initialize-Disk

Enable-VMReplication

Enable-ClusterS2D

New-Volume

New-Partition



- A. Mastered
- B. Not Mastered

Answer: A

Explanation:

Answer Area

➤

➤

New-Cluster

Enable-ClusterS2D

New-Volume

NEW QUESTION 9

You have a Nano Server named Nano1.

Nano1 is configured to perform real-time protection scans by using Windows Defender.

You need to ensure that all of the files located in D:\App1\Data are excluded from the real-time protection scans.

What should you do?

- A. From the properties of D:\App1\Data folder, modify the permissions.
- B. Run the Set-MpPreference cmdlet and specify the –ExclusionPath parameter.
- C. From a command prompt, run the attrib command and specify the –s parameter.
- D. Run the Get-ChildItem cmdlet and specify the –Exclude parameter.

Answer: B

NEW QUESTION 10

HOTSPOT

Your network contains an Active Directory forest. The forest contains two domain controllers named DC1 and DC2 that run Windows Server 2016. DC1 holds all of the operations master roles.

DC1 experiences a hardware failure.

You plan to use an automated process that will create 1000 user accounts. You need to ensure that the automated process can complete successfully.

Which command should you run? To answer, select the appropriate options in the answer area.

Move-ADDirectoryServerOperatinMasterRole
ntdsutil

▼

-identity "DC2" -OperationMasterRole

PDCEmulator
InfrastructureMaster
RIDMaster
SchemaMaster

▼

Seize pdc
-Force

▼

- A. Mastered
- B. Not Mastered

Answer: A

Explanation:

Move-ADDirectoryServerOperatinMasterRole
ntdsutil

▼

-identity "DC2" -OperationMasterRole

PDCEmulator
InfrastructureMaster
RIDMaster
SchemaMaster

▼

Seize pdc
-Force

▼

NEW QUESTION 10

HOTSPOT

Your network contains an Active Directory forest. The forest contains one domain named contoso.com. The domain contains two domain controllers named DC1 and DC2. DC1 holds all of the operations master roles.

During normal network operations, you run the following commands on DC2:

Move-ADDirectoryServerOperationMasterRole -Identity "DC2" -OperationMasterRole PDCEmulator Move-ADDirectoryServerOperationMasterRole -Identity "DC2" -OperationMasterRole RIDMaster DC1 fails.

You remove DC1 from the network, and then you run the following command:

Move-ADDirectoryServerOperationMasterRole -Identity "DC2" -OperationMasterRole SchemaMaster For each of the following statements, select Yes if the statement is true. Otherwise, select No.

Statements	Yes	No
DC2 holds the schema master operations role.	<input type="radio"/>	<input type="radio"/>
DC2 holds the PDC emulator master operations role.	<input type="radio"/>	<input type="radio"/>
Currently, you can add additional domains to the forest.	<input type="radio"/>	<input type="radio"/>

- A. Mastered
 B. Not Mastered

Answer: A

Explanation:

Statements	Yes	No
DC2 holds the schema master operations role.	<input type="radio"/>	<input checked="" type="radio"/>
DC2 holds the PDC emulator master operations role.	<input checked="" type="radio"/>	<input type="radio"/>
Currently, you can add additional domains to the forest.	<input type="radio"/>	<input checked="" type="radio"/>

NEW QUESTION 12

DRAG DROP

You install a new Nano Server named Nano1. Nano1 is a member of a workgroup and has an IP address of 192.168.1.10.

You have a server named Server1 that runs Windows Server 2016.

From Server1, you need to establish a Windows PowerShell session to Nano1.

How should you complete the PowerShell script? To answer, drag the appropriate cmdlets to the correct targets. Each cmdlet may be used once, more than once, or not at all. You may need to drag the split bar between panes or scroll to view content.

Enable-PSRemoting

Enter-PSSession

Set-Item

Set-ItemProperty

Set-LocalUser

\$ip = "192.168.1.10"

\$user = "Administrator"

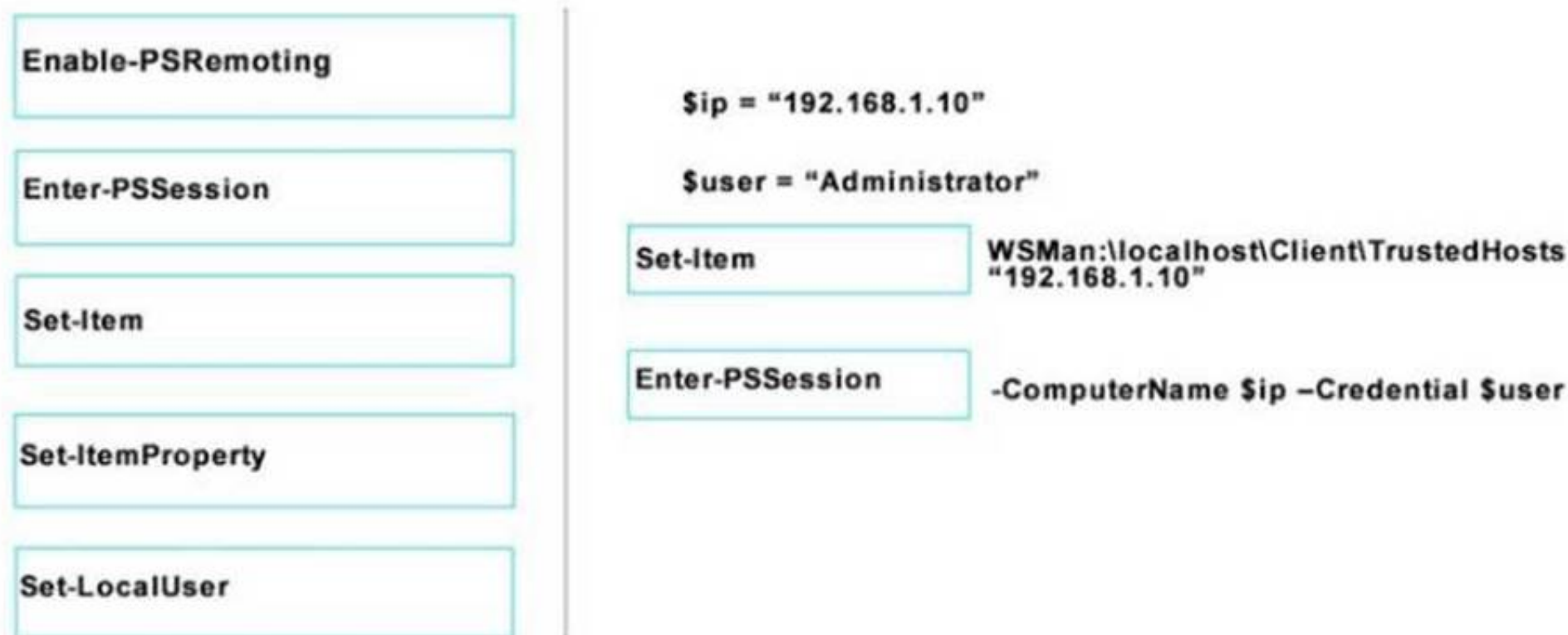
WSMan:\localhost\Client\TrustedHosts
"192.168.1.10"

-ComputerName \$ip -Credential \$user

- A. Mastered
 B. Not Mastered

Answer: A

Explanation:



NEW QUESTION 15

You deploy a Hyper-V server named Served in an isolated test environment The test environment is prevented from accessing the Internet Server1 runs the Datacenter edition of Windows Server 2016. You plan to deploy the following guest virtual machines on the server

Quantity	Operating system	Domain member
10	Windows Server 2012 R2	Yes
4	Windows Server 2016	No
5	Windows Server 2016	Yes

Which activation model should you use for the virtual machines'?

- A. Multiple Activation Key (MAK)
- B. Automatic Virtual Machine Activation (AVMA)
- C. Original Equipment Manufacturer (OEM) key
- D. Key Management Service (KMS)

Answer: B

NEW QUESTION 19

DRAG DROP

You are deploying DirectAccess to a server named DA1. Da1 will be located behind a firewall and will have a single network adapter The intermediary network will be IPv4.

You need to configure firewall to support DirectAccess.

Which firewall rules should you create for each type of traffic? To answer, drag the appropriate ports and protocols to the correct traffic types. Each port and protocol may be used once, more than once, or not at all. You may need to drag the split bar between panes or scroll to view content

Ports and Protocols		Answer Area	
IP protocol ID 1	IP Protocol ID 41	Teredo traffic:	
TCP 443	UDP 3544	6to4 traffic:	
		IP-HTTPS:	

- A. Mastered
- B. Not Mastered

Answer: A

Explanation:

Ports and Protocols		Answer Area	
IP protocol ID 1	IP Protocol ID 41	Teredo traffic:	UDP 3544
TCP 443	UDP 3544	6to4 traffic:	IP Protocol ID 41
		IP-HTTPS:	TCP 443

NEW QUESTION 21

You have a Nano Server named Nano1.

You deploy several containers to Nano1 that use an image named Image1. You need to deploy a new container to Nano1 that uses Image1. What should you run?

- A. the Install-NanoServerPackage cmdlet
- B. theInstall-WindowsFeaturecmdlet
- C. the docker load command
- D. the docker run command

Answer: D

NEW QUESTION 26

You have a server named Served that runs Windows Server 2016. Server1 will be used as a VPN

server. You need to configure Server1 to support VPN Reconnect. Which VPN protocol should you use?

- A. PPTP
- B. L2TP
- C. SSTP
- D. IKEv2

Answer: D

NEW QUESTION 28

DRAG DROP

You have a server that runs Windows Server 2016 You install three additional physical disks named Disk1. Disk2. and Disk3 You plan to use these physical disks to store data

You need to create a volume to store data The solution must prevent data loss in the event of a single disk failure

Which three actions should you perform in sequence'? To answer, move the appropriate actions from the list of actions to the answer area and arrange them in the correct order

Create a Virtual Disk.	<div>➤</div> <div>➤</div> <div>➤</div> <div>➤</div>	
Create a Storage Pool.		
Create a new Storage Tier.		
Create a Volume.		
Assign a Storage Tier to a virtual disk.		
Create a Virtual Disk Clone.		

- A. Mastered
- B. Not Mastered

Answer: A

Explanation:

Create a Storage Pool.

Create a Virtual Disk.

Create a Volume.

NEW QUESTION 29

Your network contains an Active Directory domain named contoso.com. The domain contains two servers named Server1 and Server2 that have the same hardware configuration

You need to asynchronously replicate volume F: from Server1 to Server2. What should you do?

- A. Run New-SRPartnership and specify the -RephcationMode parameter.
- B. Install the Failover Clustering feature and create a new cluster resource group.
- C. Install the Failover Clustering feature and use Cluster Shared Volumes (CSV).
- D. Run Set-DfsrServiceConfiguration and specify the -RPCPort parameter

Answer: A

NEW QUESTION 30

HOTSPOT

You have a server named Server1 that runs Windows Server 2016. Server1 has the Windows Application proxy role service installed.

You plan to deploy Remote Desktop Gateway (RD Gateway) services. Clients will connect to the RD Gateway services by using various types of devices including Windows, iOS, and Android devices.

You need to publish the RD Gateway services through the Web Application Proxy.

Which command should you run? To answer, select the appropriate options in the answer area.

Add-WebApplicationProxyApplication
Set-WebApplicationProxyApplication
Set-WebApplicationProxyConfiguration

-BackendServerURL 'https://rdg.contoso.com/rdg1/'
-ExternalCertificateThumbprint
'1a2b3c4d5e6f1a2b3c4d5e6f1a2b3c4d5e6f1a2b'

-ExternalURL 'https://rdg.contoso.com/rdg1'
-Name 'RDG1'

-ExternalPreAuthentication

ADFS
ADFSforOAuth
ClientCertificate
PassThrough

-ADFSRelyingPartyName 'Default provider'

-BackendServerAuthenticationSPN 'HTTP/RDG1'

- A. Mastered
- B. Not Mastered

Answer: A

Explanation:



NEW QUESTION 31

Your network contains an Active Directory forest named contoso.com. The forest contains a member server named Server1 that runs Windows Server 2016. Server1 is located in the perimeter network. You install the Active Directory Federation Services server role on Server1. You create an Active Directory Federation Services (ADFS) farm by using a certificate that has a subject name of sts.contoso.com. You need to enable certificate authentication from the Internet on Server1. Which two inbound TCP ports should you open on the firewall? Each correct answer presents part of the solution.

- A. 389
- B. 443
- C. 3389
- D. 8531
- E. 49443

Answer: BE

NEW QUESTION 34

HOTSPOT

You have a server named Server1 that runs Windows Server 2016. Server1 has the Windows Application Proxy role service installed. You are publishing an application named App1 that will use Integrated Windows authentication as shown in the following graphic.



Use the drop-down menus to select the answer choice that completes each statement based on the information presented in the graphic.

Before you can complete the wizard, you must [answer choice]

change the external certificate
 configure the Backend server SPN
 select Enable HTTP to HTTPS redirection

To ensure that users can access App1 externally, you must
 change the External URL to [answer choice.]

<https://app1.contoso.com/app1>
<https://server02.contoso.com/app1>
<https://server02.contoso.com/publish/app1>

- A. Mastered
- B. Not Mastered

Answer: A

Explanation:

Before you can complete the wizard, you must [answer choice]

change the external certificate
 configure the Backend server SPN
 select Enable HTTP to HTTPS redirection

To ensure that users can access App1 externally, you must
 change the External URL to [answer choice.]

<https://app1.contoso.com/app1>
<https://server02.contoso.com/app1>
<https://server02.contoso.com/publish/app1>

NEW QUESTION 36

HOTSPOT

You have a server named Server1 that runs Windows Server 2016 Server1 has the Web Application Proxy role service installed

You publish an application named App1 by using the Web Application Proxy.

You need to change the URL that users use to connect to App1 when they work remotely. Which command should you run? To answer, select the appropriate options in the answer area

Set-WebApplicationProxySslCertificate
 Set- WebApplicationProxyApplication
 Set- WebApplicationProxyConfiguration

-ID 874A4543-7983-77A3-1E6D-1163E7419AC1

-ADFSUrl
 -BackendServerURL
 -ExternalURL

<https://SP.Contoso.com>

- A. Mastered
- B. Not Mastered

Answer: A

Explanation:



NEW QUESTION 41

You have a failover cluster named Cluster1.
A virtual machine named VM1 is a highly available virtual machine that runs on Cluster1. A custom application named App1 runs on VM1.
You need to configure monitoring of VM1. If App1 adds an error entry to the Application event log, VM1 should be automatically rebooted and moved to another cluster node.
Which tool should you use?

- A. Hyper-V Manager
- B. Failover Cluster Manager
- C. Server Manager
- D. Resource Monitor

Answer: B

NEW QUESTION 43

HOTSPOT
Your network contains an Active Directory domain named contoso.com. The domain contains four servers named Server 1, Server2, Server3, and Server4 that run Windows Server 2016.
Server 1 and Server2 are nodes in Hyper-V cluster named Cluster1. You have a highly available virtual machine named VM1.
Server1 is the owner node of VM1. Server3 and Server4 are nodes of a scale-out file server named Cluster2.
The storage on Server1 is configured as shown in the following table.

Location	Type
C:\ClusterStorage\Volume1	iSCSI Cluster Shared Volumes (CSV)
D:\	A locally attached disk
E:\	An iSCSI LUN
\\Cluster2\Share1	A file share on Cluster2

You need to move the virtual disk of VM1 to a different location.
What should you do? To answer, select the appropriate options in the answer area.

Tool you should move the virtual disk of VM1:

▼

Disk Management
Failover Cluster Manager
Hyper-V Manager
Server Manager

Location to which you should move the virtual disk of VM1:

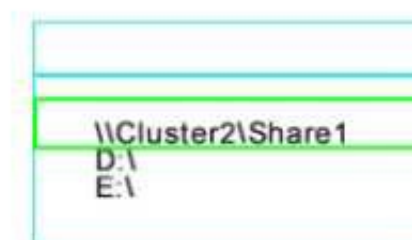
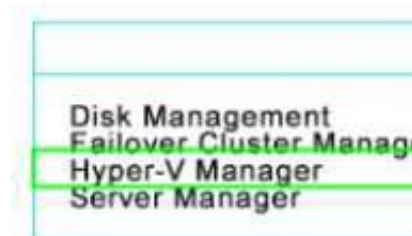
▼

\\Cluster2\Share1
D:\
E:\

- A. Mastered
- B. Not Mastered

Answer: A

Explanation:



NEW QUESTION 47

DRAG DROP

You have a server named Server1 that runs Windows Server 2016.

You need to deploy the first node cluster of a Network Controller cluster

Which four cmdlets should you run in sequence? To answer, move the appropriate cmdlets from the list of cmdlets to the answer area and arrange them in the correct order

Actions	Answer Area
Install-WindowsFeature	1. <input type="text"/>
New-NetworkControllerNodeObject	2. <input type="text"/>
Enable-NetworkControllerNode	3. <input type="text"/>
Install-NetworkController	4. <input type="text"/>
Install-NetworkControllerCluster	

- A. Mastered
 B. Not Mastered

Answer: A

Explanation:

Install-WindowsFeature
New-NetworkControllerNodeObject
Install-NetworkControllerCluster
Install-NetworkController

NEW QUESTION 52

Your company has 10 offices. Each office has a local network that contains several Hyper-V hosts that run Windows Server 2016. All of the offices are connected by high speed, low latency WAN links.

You need to ensure that you can use QoS policies for Live Migration traffic between the offices. Which component should you install?

- A. the Multipath I/O feature
 B. the Routing role service
 C. the Network Controller server role
 D. the Canary Network Diagnostics feature
 E. the Data Center Bridging feature

Answer: CE

NEW QUESTION 55

HOTSPOT

You have an Active Directory domain named Contoso.com. The domain contains Hyper-V hosts named Server1 and Server2 that run Windows Server 2016. The Hyper-V hosts are configured to use NVGRE for network virtualization.

You have four virtual machines that are connected to an external switch. The virtual machines are configured as shown.

To which virtual machine or virtual machines can VM1 and VM3 connect? To answer, select the appropriate options in the answer area.

Virtual Machine Name	Hyper-V host	IP address	Netmask	GRE key
VM 1	Server1	192.168.1.16	255.255.255.0	16
VM 2	Server1	192.168.1.232	255.255.255.0	32
VM 3	Server2	192.168.1.32	255.255.255.0	32
VM 4	Server2	192.168.1.25	255.255.255.0	25
VM 5	Server2	192.168.1.116	255.255.255.0	16
VM 6	Server2	192.168.1.132	255.255.255.0	32

VM1 can connect to:

VM2 only
VM5 only
VM2, VM3, VM5 and VM6 only
VM2, VM3, VM4, VM5, and VM6

VM3 can connect to:

VM6 only
VM2, and VM6 only
VM4, VM5 and VM6 only
VM1, VM2, VM5, and VM6 only
VM1, VM2, VM4, VM5, and VM6

- A. Mastered
- B. Not Mastered

Answer: A

Explanation:

VM1 can connect to:

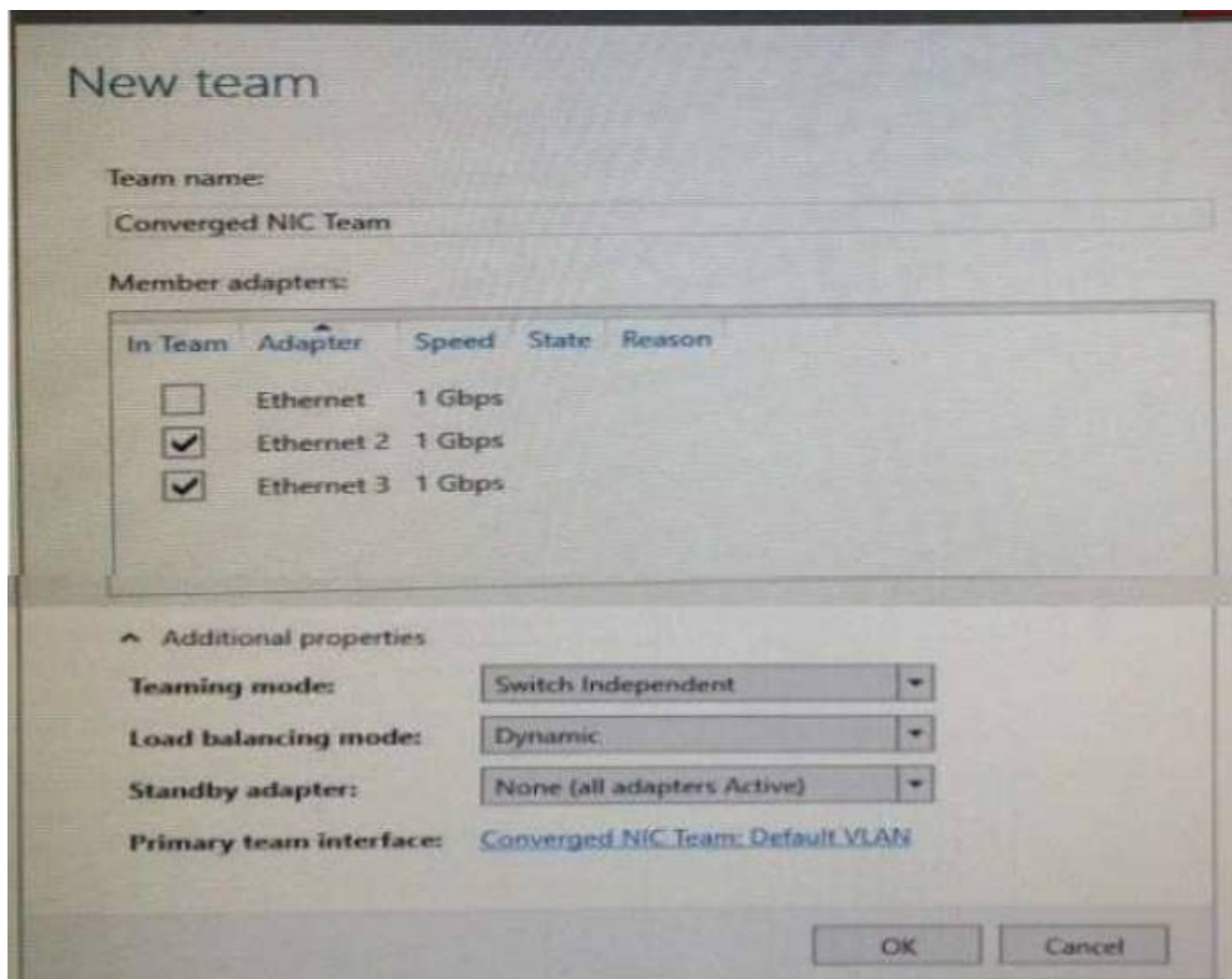
VM2 only
VM5 only
VM2, VM3, VM5 and VM6 only
VM2, VM3, VM4, VM5, and VM6

VM3 can connect to:

VM6 only
VM2, and VM6 only
VM4, VM5 and VM6 only
VM1, VM2, VM5, and VM6

NEW QUESTION 59

You have a server named Server1 that runs Windows Server 2016. Server1 is a Hyper-V host that hosts a virtual machine named VM1. Server1 has three network adapter cards That connect to a virtual switch named vSwitch1. You configure NIC Teaming on VM1 as shown in the exhibit.



You need to ensure that VM1 will retain access to the network if a physical adapter card fails on Server1. What should you do?

- A. From Hyper-V Manager on Server1, modify the settings of VM1.
- B. From Windows PowerShell on Server1, run the Set-VmSwitchcmdlet.
- C. From the properties of the NIC team on VM1, add the adapter named Ethernet to the NIC team.
- D. From the properties of the NIC team on VM1, change the load balancing of the NIC team.

Answer: A

NEW QUESTION 62

HOTSPOT

You have a server named Server1 that runs Windows Server 2016. Server1 is a Hyper-V host.

You have two network adapter cards on Server1 that are Remote Direct Memory Access (RDMA) - capable.

You need to aggregate the bandwidth of the network adapter cards for a virtual machine on Server1. The solution must ensure that the virtual machine can use the RDMA capabilities of the network adapter cards.

Which command should you run first? To answer, select the appropriate options in the answer area.

▼

Add-NetLbfoTeamNic
Add-VmNetworkAdapter
New-NetLbfoTeam
Add-VmSwitch

-Name Production -NetAdapterName "NIC 1", "NIC 2"

▼

-EnableEmbeddedTeaming
-EnableIov
-EnablePacketDirect

\$true

- A. Mastered
- B. Not Mastered

Answer: A

Explanation:

▼

Add-NetLbfoTeamNic
Add-VmNetworkAdapter
New-NetLbfoTeam
Add-VmSwitch

-Name Production -NetAdapterName "NIC 1", "NIC 2"

▼

-EnableEmbeddedTeaming
-EnableIov
-EnablePacketDirect

\$true

NEW QUESTION 64

You have a server named Server1 that runs Windows Server 2016. You need to configure Server1 as a multitenant RAS Gateway. What should you install on Server1?

- A. the Network Policy and Access Services server role
- B. the Remote Access server role
- C. the Data Center Bridging feature
- D. the Network Controller server role

Answer: B

NEW QUESTION 66

DRAG DROP

You have a physical server named Server1 that runs Windows Server 2016. Server1 is a Hyper-V host. On Server1, you create a virtual machine named VM1 that runs Windows Server 2016.

You plan to install the Hyper-V server role on VM1.

You need to ensure that you can configure VM1 to host virtual machines.

How should you complete the Windows PowerShell script? To answer, drag the appropriate values to the correct targets. Each value may be used once, more than once, or not at all. You may need to drag the split bar between panes or scroll to view content.

Values

\$false

\$null

\$true

Set-VMProcessor -VMName VMHOST1 -ExposeVirtualizationExtensions

-Count 2

Set-VMMemory VMHOST1 -DynamicMemoryEnabled

Get-VMNetworkAdapter -VMName VMHOST1 | Set-VMNetworkAdapter -MacAddressSpoofing on

- A. Mastered
- B. Not Mastered

Answer: A

Explanation:

Answer Area

Values

\$false

\$null

\$true

Set-VMProcessor -VMName VMHOST1 -ExposeVirtualizationExtensions

\$true

-Count 2

Set-VMMemory VMHOST1 -DynamicMemoryEnabled

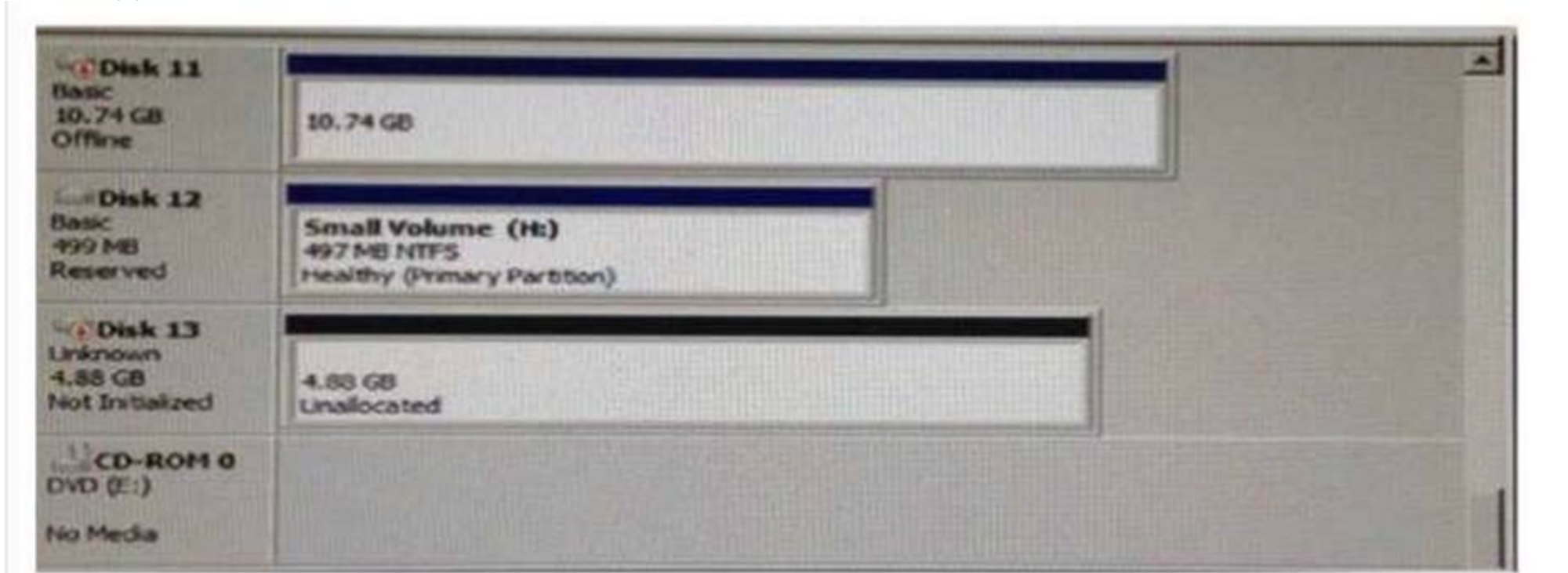
\$false

Get-VMNetworkAdapter -VMName VMHOST1 | Set-VMNetworkAdapter -MacAddressSpoofing on

NEW QUESTION 69

HOTSPOT

You have a server named Server1 that runs Windows Server 2016 and has the Hyper-V server role installed. You open Disk Management on Server1 as shown in the following graphic.



You plan to configure Disk13 as a pass-through disk for a generation 1 virtual machine.

Use the drop-down menus to select the answer choice that completes each statement based on the information presented in the graphic

The status of Disk 13 must be set to [answer choice.]

Initializing
Offline
Online

If the virtual machine uses Disk 13 as the system partition, Disk 13 must be attached to [answer choice] in Hyper-V Manager.

a Fibre Channel adapter
an IDE controller
a SCSI controller

- A. Mastered
- B. Not Mastered

Answer: A

Explanation:

The status of Disk 13 must be set to [answer choice.]

Initializing
Offline
Online

If the virtual machine uses Disk 13 as the system partition, Disk 13 must be attached to [answer choice] in Hyper-V Manager.

a Fibre Channel adapter
an IDE controller
a SCSI controller

NEW QUESTION 74

You need to ensure that VM1 and VM2 can communicate with each other only. The solution must prevent VM1 and VM2 from communicating with Server1. Which cmdlet should you use?

- A. Set-NetNeighbor
- B. Remove-VMSwitchTeamMember
- C. Set-VMSwitch
- D. Enable-VMSwitchExtension

Answer: C

NEW QUESTION 77

HOTSPOT

You have a Hyper-V host that runs Windows Server 2016 The Hyper-V host has a virtual machine named VM1

You have a VHD named VHD1.vhdx that has a generalized image of Windows Server 2016. You plan to create multiple virtual machines that will use the generalized image

You need to create differencing disks based on VHD1.vhdx

What command should you run? To answer, select the appropriate options in the answer area

▼

Add-VMHardDiskDrive
New-VHD
Set-VHD
Set-VMHardDiskDrive

-Path "C:\VHDs\VHD1Diff.VHDX"

▼

-ParentPath
-SourceDisk

"C:\VHDs\VHD1.VHDX" -Differencing

- A. Mastered
- B. Not Mastered

Answer: A

Explanation:

▼

Add-VMHardDiskDrive
New-VHD
Set-VHD
Set-VMHardDiskDrive

-Path "C:\VHDs\VHD1Diff.VHDX"

▼

-ParentPath
-SourceDisk

"C:\VHDs\VHD1.VHDX" -Differencing

NEW QUESTION 82

HOTSPOT

Your network contains an Active Directory domain named contoso.com. The domain contains four servers named Server1, Server2, Server3, and Server4 that run Windows Server 2016.

Server1 has IP Address Management (IPAM) installed. Server2, Server3, and Server4 have the DHCP Server role installed. IPAM manages Server2, Server3, and Server4.

A domain user named User1 is a member of the groups shown in the following table

Server name	Group
Server1	IPAM Users
Server2	DHCP Administrators
Server3	DHCP Users
Server4	Users

Which actions can User1 perform? To answer, select the appropriate options in the answer area.

Actions	Yes	No
Use the DHCP console on Server1 to create a DHCP scope on Server2.	<input type="radio"/>	<input type="radio"/>
Use the DHCP console on Server1 to create a DHCP scope on Server3.	<input type="radio"/>	<input type="radio"/>
Use the IPAM node of Server Manager on Server1 to create a DHCP scope on Server4.	<input type="radio"/>	<input type="radio"/>

- A. Mastered
- B. Not Mastered

Answer: A

Explanation:

Actions	Yes	No
Use the DHCP console on Server1 to create a DHCP scope on Server2.	<input checked="" type="radio"/>	<input type="radio"/>
Use the DHCP console on Server1 to create a DHCP scope on Server3.	<input type="radio"/>	<input checked="" type="radio"/>
Use the IPAM node of Server Manager on Server1 to create a DHCP scope on Server4.	<input type="radio"/>	<input checked="" type="radio"/>

NEW QUESTION 86

Note: This question is part of a series of questions that use the same similar answer choices. An answer choice may be correct for more than one question in the series. Each question is independent of the other questions in this series. Information and details provided in a question apply only to that question.

You have a Hyper-V host named Server1 that runs Windows Server 2016 and a two-node scale-out file server cluster named Cluster1.

A virtual machine named VM1 runs on Server1.

You need to migrate the storage on VM1 to Cluster1. Which tool should you use?

- A. the clussvc.exe command
- B. the cluster.exe command
- C. the Computer Management console
- D. the configurehyperv.exe command
- E. the Disk Management console
- F. the Failover Cluster Manager console
- G. the Hyper-V Manager console
- H. the Server Manager Desktop app

Answer: G

NEW QUESTION 87

Note: This question is part of a series of questions that use the same similar answer choices An

answer choice may be correct for more than one question in the series Each question is independent of the other questions in this series. Information and details provided in a question apply only to that question

You have three servers named Server1, Server2. Server3 that run Windows Server 2016 Server1 and Server2 have the Hyper-V server role installed Server3 has the iSCSI Target Server role service installed.

Server name	Components installed
Server1	Hyper-V server role
Server2	Hyper-V server role
Server3	iSCSI Target Server role service

You need to create a Hyper-V cluster Which tool should you use first?

- A. the clussvc.exe command
- B. the cluster.exe command
- C. the Computer Management console
- D. the configurehyperv.exe command
- E. the Disk Management console
- F. the Failover Cluster Manager console
- G. the Hyper-V Manager console
- H. the Server Manager Desktop app

Answer: H

NEW QUESTION 92

Note: This question is part of a series of questions that use the same similar answer choices. An

answer choice may be correct for more than one question in the series. Each question is independent of the other questions in this series. Information and details provided in a question apply only to that question.

You have an Active Directory domain that contains two Hyper-V servers named Server1 and Server2. Server1 has Windows Server 2016 installed. Server2 has Windows Server 2012 R2 installed.

Each Hyper-V server has three network cards. Each network card is connected to a different subnet. Server1 contains a dedicated migration network.

Server2 contains a virtual machine named VM5.

You plan to perform a live migration of VM5 to Server1.

You need to ensure that Server1 uses all available networks to perform the live migration of VM5. What should you run1?

- A. the Mount-VHD cmdlet
- B. the Diskpart command
- C. the Set-VHD cmdlet
- D. the Set-VM cmdlet
- E. the Set-VMHost cmdlet
- F. the Set-VMProcessor cmdlet
- G. the Install-WindowsFeature cmdlet
- H. the Optimize-VHD cmdlet

Answer: E

NEW QUESTION 93

Note: This question is part of a series of questions that use the same similar answer choices An

answer choice may be correct for more than one question in the series Each question is independent of the other questions in this series. Information and details provided in a question apply only to that question

You have a Hyper-V host named Server1 that runs Windows Server 2016 Server1 has a virtual machine named VM1 that uses a single VHDX file VM1 is configured shown in the following table

Configuration	Details
Virtual machine generation	V2
Operating system	Windows 8
File system	NTFS
Number of partitions	1
Disk type	Basic
Unallocated disk space	100 GB

You plan to use VM1 as a virtual Machine Template to deploy shielded virtual machines You need to ensure that VM1 can be used to deploy shielded virtual machines What should you run?

- A. the Mount-VHD cmdlet
- B. the Diskpart command
- C. the Set-VHD cmdlet
- D. the Set-VM cmdlet
- E. the Set-VMHost cmdlet
- F. the Set-VMProcessor cmdlet
- G. the Install-WindowsFeature cmdlet
- H. the Optimize-VHD cmdlet

Answer: B

NEW QUESTION 98

In this section, you'll see one or more sets of questions with the same scenario and problem Each

question presents a unique solution to the problem, and you must determine whether the solution meets the stated goals. Any of the solutions might solve the problem. It is also possible that none of the solutions solve the problem.

Once you answer a question in this section, you will NOT be able to return to it. As a result, these questions will not appear in the review screen

Note: This question is part of a series of questions that present the same scenario. Each question in the series contains a unique solution. Determine whether the solution meets the stated goals.

Your network contains an Active Directory domain named contoso.com. The domain contains a DNS server named Server1. All client computers run Windows 10. On Server1, you have the following zone configuration

ZoneName	ZoneType	IsAutoCreated	IsDsIntegrated	IsReverseLookupZone	IsSign
-----	-----	-----	-----	-----	-----
_msdcs.contoso.com	Primary	False	True	False	False
adatum.com	Forwarder	False	False	False	
contoso.com	Primary	False	True	False	False
fabrikam.com	Primary	False	False	False	True
TrustAnchors	Primary	False	True	False	False

You have the following subnets defined on Server1.

Name	IPv4Subnet	IPv6Subnet
----	-----	-----
Subnet1	{10.0.0.0/24}	
Subnet2	{10.0.1.0/24}	
Subnet3	{192.168.15.0/24}	
Subnet4	{172.16.1.0/24}	

You need to prevent Server1 from resolving queries from DNS clients located on Subnet4 Server1

must resolve queries from all other DNS clients

Solution From a Group Policy object (GPO) in the domain, you modify the Network List Manager Policies

Does this meet the goal?

A. Yes

B. No

Answer: B

NEW QUESTION 102

In this section, you'll see one or more sets of questions with the same scenario and problem Each

question presents a unique solution to the problem, and you must determine whether the solution meets the stated goals. Any of the solutions might solve the problem. It is also possible that none of the solutions solve the problem.

Once you answer a question in this section, you will NOT be able to return to it. As a result, these questions will not appear in the review screen

Note: This question is part of a series of questions that present the same scenario. Each question in the series contains a unique solution. Determine whether the solution meets the stated goals.

Your network contains an Active Directory domain named contoso.com. The domain contains a DNS server named Server1. All client computers run Windows 10. On Server1, you have the following zone configuration

ZoneName	ZoneType	IsAutoCreated	IsDsIntegrated	IsReverseLookupZone	IsSign
-----	-----	-----	-----	-----	-----
_msdcs.contoso.com	Primary	False	True	False	False
adatum.com	Forwarder	False	False	False	
contoso.com	Primary	False	True	False	False
fabrikam.com	Primary	False	False	False	True
TrustAnchors	Primary	False	True	False	False

You have the following subnets defined on Server1.

Name	IPv4Subnet	IPv6Subnet
----	-----	-----
Subnet1	{10.0.0.0/24}	
Subnet2	{10.0.1.0/24}	
Subnet3	{192.168.15.0/24}	
Subnet4	{172.16.1.0/24}	

You need to prevent Server1 from resolving queries from DNS clients located on Subnet4 Server1

must resolve queries from all other DNS clients

Solution From Windows PowerShell on Setver1, you run the Add-DnsServerTrustAnchor cmdtel Does this meet the goal?

A. Yes

B. No

Answer: A

NEW QUESTION 106

In this section, you'll see one or more sets of questions with the same scenario and problem Each

question presents a unique solution to the problem, and you must determine whether the solution meets the stated goals. Any of the solutions might solve the problem. It is also possible that none of the solutions solve the problem.

Once you answer a question in this section, you will NOT be able to return to it. As a result, these questions will not appear in the review screen

Note: This question is part of a series of questions that present the same scenario. Each question in the series contains a unique solution. Determine whether the solution meets the stated goals.

Your network contains an Active Directory domain named contoso.com. The domain contains a DNS server named Server1. All client computers run Windows 10.

On Server1, you have the following zone configuration

ZoneName	ZoneType	IsAutoCreated	IsDsIntegrated	IsReverseLookupZone	IsSign
-----	-----	-----	-----	-----	-----
_msdcs.contoso.com	Primary	False	True	False	False
adatum.com	Forwarder	False	False	False	
contoso.com	Primary	False	True	False	False
fabrikam.com	Primary	False	False	False	True
TrustAnchors	Primary	False	True	False	False

You have the following subnets defined on Server1.

Name	IPv4Subnet	IPv6Subnet
-----	-----	-----
Subnet1	{10.0.0.0/24}	
Subnet2	{10.0.1.0/24}	
Subnet3	{192.168.15.0/24}	
Subnet4	{172.16.1.0/24}	

You need to prevent Server1 from resolving queries from DNS clients located on Subnet4 Server1

must resolve queries from all other DNS clients

Solution From Windows PowerShell on Server1, you run the Export-DnsServerDnsSecPublicKey cmdlet

Does this meet the goal?

A. Yes

B. No

Answer: B

NEW QUESTION 107

Note: This question is part of a series of questions that present the same scenario. Each question in

the series contains a unique solution that might meet the stated goals. Some question sets might have more than one correct solution, while others might not have a correct solution.

After you answer a question in this section, you will NOT be able to return to it. As a result, these questions will not appear in the review screen.

You have two servers that run Windows Server 2016.

You plan to create a Network Load Balancing (NLB) cluster that will contain both servers. You need to configure the network cards on the servers for the planned NLB configuration.

Solution: You configure the network cards to be on the same subnet and to have static IP addresses. You configure the cluster to use multicast.

Does this meet the goal?

A. Yes

B. No

Answer: A

Explanation:

References:

<https://technet.microsoft.com/en-us/windows-server-docs/networking/technologies/network-load-balancing>

NEW QUESTION 110

Note: This question is part of a series of questions that present the same scenario. Each question in the series contains a unique solution that might meet the stated goals. Some question sets might have more than one correct solution, while others might not have a correct solution.

After you answer a question in this section, you will NOT be able to return to it. As a result, these questions will not appear in the review screen.

You have two servers that run Windows Server 2016.

You plan to create a Network Load Balancing (NLB) cluster that will contain both servers. You need to configure the network cards on the servers for the planned NLB configuration.

Solution: You configure the network cards to be on the same subnet and to have static IP addresses. You configure the cluster to use unicast.

Does this meet the goal?

A. Yes

B. No

Answer: A

Explanation:

References:

<https://technet.microsoft.com/en-us/windows-server-docs/networking/technologies/network-load-balancing>

NEW QUESTION 113

Note This question is part of a series of questions that present the same scenario. Each question in the series contains a unique solution that might meet the stated goals. Some question sets might have more than one correct solution, while others might not have a correct solution.

After you answer a question in this section, you will NOT be able to return to it. As a result, these questions will not appear in the review screen.

You are a server administrator at a company named Contoso, Ltd.

Contoso has a Windows Server 2016 Hyper-V environment configured as shown in the following table.

Hyper-V host name	Configuration	Virtual switch name
Host1	- Uses an Intel processor - Is a member of a SAN named SAN1	Switch1
Host2	- Uses an AMD processor - Has local storage only	Switch2
Host3	- Uses an Intel processor - Is a member of a SAN named SAN1	Switch1
Host4	- Uses an Intel processor - Has local storage only	Switch2

All of the virtual switches are of the external type.

You need to ensure that you can move virtual machines between the hosts without causing the virtual machines to disconnect from the network.

Solution: You implement live migration by using Host1 and Host2. Does this meet the goal?

A. Yes

B. No

Answer: B

NEW QUESTION 118

Note: This question is part of a series of questions that present the same scenario. Each question in the series contains a unique solution that might meet the stated goals. Some question sets might have more than one correct solution, while others might not have a correct solution.

Your network contains an Active Directory forest

You install Windows Server 2016 on 10 virtual machines.

You need to deploy the Web Server (IIS) server role identically to the virtual machines.

Solution: You use Windows PowerShell Desired State Configuration (DSC) to create a default configuration and then you apply the configuration the virtual machines.

A. Yes

B. No

Answer: A

Explanation:

References:

<https://www.simple-talk.com/sysadmin/powershell/powershell-desired-state-configuration-the-basics/>

NEW QUESTION 119

Note: This question is part of a series of questions that present the same scenario. Each question in the series contains a unique solution that might meet the stated goals. Some question sets might have more than one correct solution, while others might not have a correct solution.

Your network contains an Active Directory forest

You install Windows Server 2016 on 10 virtual machines.

You need to deploy the Web Server (IIS) server role identically to the virtual machines.

Solution: You create a software installation package, and then you publish the package to the virtual machines by using a Group Policy object (GPO). Does this meet the goal?

A. Yes

B. No

Answer: B

NEW QUESTION 123

Note: This question is part of a series of questions that present the same scenario. Each question in the series contains a unique solution that might meet the stated goals. Some question sets might have more than one correct solution, while others might not have a correct solution.

a correct solution.

You have a server named Server1 that runs Windows Server 2016. Server1 hosts a line-of-business application named App1. App1 has a memory leak that occasionally causes the application to consume an excessive amount of memory.

You need to log an event in the Application event log whenever App1 consume more than 4 GB of memory.

Solution: You create a system configuration information data collector. Does this meet the goal?

- A. Yes
- B. No

Answer: B

NEW QUESTION 128

You have an Active Director domain named Contoso.com. The domain contains servers named Server 1, Server2 and Server3 that run Windows Server 2016

Server1 and Server2 are nodes in a Hyper V cluster named Cluster1. You add a Hyper V Replica Broker role named Broker 1 to Cluster 1

Server3 is a Hyper-V server. A virtual machine named VM1 runs on Server3.

Live Migration is enabled on all three servers and it is configured to use Kerberos authentication only. You need to ensure that you can perform the migration of VM1 to Server2

What should you do?

- A. Modify the Storage Migration settings on Server3
- B. Modify the Cluster Permissions for Cluster1.
- C. Add the Server3 computer account to the Replicator group on Server1 and Server2.
- D. Modify the Delegation settings for the Server3 computer account.

Answer: D

Explanation:

References:

[https://technet.microsoft.com/en-us/library/jj134199\(v=ws.11\).aspx#BKMK_Step1](https://technet.microsoft.com/en-us/library/jj134199(v=ws.11).aspx#BKMK_Step1)

NEW QUESTION 130

HOTSPOT

You implement a Windows Server 2016 failover cluster named Cluster1 as a highly available file server.

You run the Get-Cluster cmdlet and receive the following output.

AddEvictDelay	: 60
AdministrativeAccessPoint	: Dns
AutoAssignNodeSite	: 0
AutoBalancerMode	: 2
AutoBalancerLevel	: 1
ClusSvcHangTimeout	: 135
ClusSvcRegroupStageTimeout	: 5
ClusSvcRegroupTickInMilliseconds	: 300
ClusterEnforcedAntiAffinity	: 0
ClusterFunctionalLevel	: 9
ClusterUpgradeVersion	: 7
ClusterGroupWaitDelay	: 120
ClusterLogLevel	: 3
ClusterLogSize	: 300
DatabaseReadWriteMode	: 0
DefaultNetworkRole	: 3
Description	:
Domain	: contoso.com
EnableSharedVolumes	: Enabled
FixQuorum	: 0
Id	: ec6121be-f816-426b-b550-72cafb943f1b
Name	: cluster1

Use the drop-down menus to select the answer choice that completes each statement based on the information presented in the graphic.

Answer Area

You can perform Cluster-Aware Updating (CAU) in [answer choice].

▼
self-updating mode only
remote-updating mode only
remote-updating mode and self-updating mode

You can use [answer choice] to create a file share in Cluster1.

▼
DFS Management
Failover Cluster Manager
File Server Resource Manager
Server Manager

- A. Mastered
- B. Not Mastered

Answer: A

Explanation:

Answer Area

You can perform Cluster-Aware Updating (CAU) in [answer choice].

▼
self-updating mode only
remote-updating mode only
remote-updating mode and self-updating mode

You can use [answer choice] to create a file share in Cluster1.

▼
DFS Management
Failover Cluster Manager
File Server Resource Manager
Server Manager

NEW QUESTION 133

You have four servers named Server1, Server2, Server3, and Server4 that run Windows Server 2016. Each server has a single 4-TB SATA hard disk. To each server you attach a new 4-TB SATA hard disk. You need to create a new storage cluster that uses Storage Spaces Direct. The storage pool must contain all of the new disks. Which command should you run before you enable Storage Space Direct?

- A. Add-ClusterSharedVolume -Name "Disk 1" -Cluster Cluster1
- B. New-Cluster -Name Cluster1 -Node 'Server1', 'Server2', 'Server3', 'Server4' -NoStorage
- C. Get-ClusterAvailableDisk -Cluster Cluster1 | Add-ClusterDisk
- D. New-ClusterStorageEnclosure -id 1 -name Cluster1 -type jbod -ConnectionString "Server1,Server2,Server3,Server4"

Answer: B

NEW QUESTION 138

DRAG DROP

Note: This question is part of a series of questions that use the same scenario. For your convenience, the scenario is repeated in each question. Each question presents a different goal and answer choices, but the text of the scenario is exactly the same in each question in this series. Your network contains an Active Directory domain named contoso.com. The functional level of the forest and the domain is Windows Server 2008 R2. All servers in the domain run Windows Server 2016 Standard. The domain contains 300 client computers that run either Windows 8.1 or Windows 10. The domain contains nine servers that are configured as shown in the following table.

Name	Configuration	Planned changes
Server1	Domain controller	None
Server2	File server	Run Failover Clustering and Storage Spaces Direct
Server3	File server	Run Failover Clustering and Storage Spaces Direct
Server4	Hyper-V host	Run shielded virtual machines
Server5	Hyper-V host	None
Server6	Member server	Run Active Directory Federation Services (AD FS)
VM1	Virtual machine hosted on Server5	None
VM2	Virtual machine hosted on Server5	None
VM3	Virtual machine hosted on Server5	None

The virtual machines are configured as follows:

- Each virtual machine has one virtual network adapter.
- VM1 and VM2 are part of a Network Load Balancing (NLB) cluster.
- All of the servers on the network can communicate with all of the virtual machines.

You need to install the correct edition of Windows Server 2016 to support the planned changes for Server2, Server3, Server4, and Server5.

Which edition or editions should you choose for each server? To answer, drag the appropriate editions to the correct servers. Each edition may be used once, more than once, or not at all. You may need to drag the split bar between panes or scroll to view content.

Editions

Standard only Datacenter only

Standard or Datacenter

Answer Area

Server2: Edition

Server3: Edition

Server4: Edition

Server6: Edition

- A. Mastered
- B. Not Mastered

Answer: A

Explanation:

Editions

Standard only Datacenter only

Standard or Datacenter

Answer Area

Server2: Datacenter only

Server3: Datacenter only

Server4: Datacenter only

Server6: Standard or Datacenter

NEW QUESTION 143

Note This question is part of a series of questions that use the same scenario. For your convenience, the scenario is repeated in each question. Each question presents a different goal and answer choices, but the text of the scenario is exactly the same in each question in this series.

Start of Repeated Scenario:

Your network contains an Active Directory domain named contoso.com. The functional level of the forest and the domain is Windows Server 2008 R2. All servers in the domain run Windows Server 2016 Standard. The domain contains 300 client computers that run either Windows 8.1 or Windows 10.

The domain contains nine servers that are configured as shown in the following table.

Name	Configuration	Planned changes
Server1	Domain controller	None
Server2	File server	Run Failover Clustering and Storage Spaces Direct
Server3	File server	Run Failover Clustering and Storage Spaces Direct
Server4	Hyper-V host	Run shielded virtual machines
Server5	Hyper-V host	None
Server6	Member server	Run Active Directory Federation Services (AD FS)
VM1	Virtual machine hosted on Server5	None
VM2	Virtual machine hosted on Server5	None
VM3	Virtual machine hosted on Server5	None

The virtual machines are configured as follows:

- Each virtual machine has one virtual network adapter
- VM1 and VM2 are part of a Network Load Balancing (NLB) cluster.
- All of the servers on the network can communicate with all of the virtual machines. End of repeated Scenario.

On server4, you plan to provision a new volume that will be used to create large, fixed-size VHDX files.

Which type of file system should you use the new volume to minimize the amount of time required to create the VHDX files?

- A. ReFS
- B. NTFS
- C. CVFS
- D. exFAT

Answer: A

NEW QUESTION 145

Note This question is part of a series of questions that use the same scenario. For your convenience, the scenario is repeated in each question. Each question presents a different goal and answer choices, but the text of the scenario is exactly the same in each question in this series.

Start of Repeated Scenario:

Your network contains an Active Directory domain named contoso.com. The functional level of the forest and the domain is Windows Server 2008 R2. All servers in the domain run Windows Server 2016 Standard. The domain contains 300 client computers that run either Windows 8.1 or Windows 10.

The domain contains nine servers that are configured as shown in the following table.

Name	Configuration	Planned changes
Server1	Domain controller	None
Server2	File server	Run Failover Clustering and Storage Spaces Direct
Server3	File server	Run Failover Clustering and Storage Spaces Direct
Server4	Hyper-V host	Run shielded virtual machines
Server5	Hyper-V host	None
Server6	Member server	Run Active Directory Federation Services (AD FS)
VM1	Virtual machine hosted on Server5	None
VM2	Virtual machine hosted on Server5	None
VM3	Virtual machine hosted on Server5	None

The virtual machines are configured as follows:

- Each virtual machine has one virtual network adapter
- VM1 and VM2 are part of a Network Load Balancing (NLB) cluster.
- All of the servers on the network can communicate with all of the virtual machines. End of repeated Scenario.

You need to minimize the likelihood that a virtual machine running malicious code will consume excessive resources on Server5.

What should you do?

- A. Configure the virtual machines as shielded virtual machines.
- B. Run the Set-VMProcessor cmdlet and specify the –EnableHostResourceProtection Parameter.
- C. Run the Set-VMProcessor cmdlet and specify the –MaximumCountPerNumaNode Parameter.
- D. Configure VM Network Adapter Isolation.

Answer: B

NEW QUESTION 146

HOTSPOT

Note: This question is part of a series of questions that use the same scenario. For your convenience, the scenario is repeated in each question. Each question presents a different goal and answer choices, but the text of the scenario is exactly the same in each question in this series.

A company named Contoso, Ltd. has several servers that run Windows Server 2016. Contoso has a Hyper-V environment that uses failover clustering and Windows Server Update Services (WSUS). The environment contains several Windows containers and several virtual machines.

The WSUS deployment contains one upstream server that is located on the company's perimeter network and several downstream servers located on the internal network. A firewall separates the upstream server from the downstream servers.

You plan to deploy a human resources application to a new server named HRServer5. HRServer5 contains a FAT32-formatted data volume.

The CIO of Contoso identifies the following requirements for the company's IT department:

- Deploy a failover cluster to two new virtual machines.
- Store all application databases by using Encrypted File System (EFS).
- Ensure that each Windows container has a dedicated IP address assigned by a DHCP server.
- Produce a report that lists the processor time used by all of the processes on a server named Server1 for five hours.
- Encrypt all communication between the internal network and the perimeter network, including all WSUS communications.
- Automatically load balance the virtual machines hosted in the Hyper-V cluster when processor utilization exceeds 70 percent.

You need to create a Data Collector Set to meet the requirement for the processor time report.

What command should you run to create the Data Collector Set? To answer, select the appropriate options in the answer area.

Answer Area

create	perf_log -c "\Process(_Total)\% Processor Time" -max 10 -rf 05:00
lodctr	alert
logman	config
perform	counter
tracert	trace

- A. Mastered
- B. Not Mastered

Answer: A

Explanation:

Answer Area

create	perf_log -c "\Process(_Total)\% Processor Time" -max 10 -rf 05:00
lodctr	alert
logman	config
perform	counter
tracert	trace

NEW QUESTION 151

DRAG DROP

You have a network that contains several servers that run Windows Server 2016.

You need to use Desired State Configuration (DSC) to configure the servers to meet the following requirements:

- Install the Web Server server role
- Start the World Wide Web Publishing service.

How should you configure the DSC resources? To answer, drag the appropriate values to the correct locations. Each value may be used once, more than once, or not at all. You may need to drag the split bar between panes or scroll to view content.

Values

Name
Service
WindowsFeature
WindowsProcess
Present
Source
Running
Stopped

Answer Area

Value	WebServerRole
{	
Ensure = "	Value
Name = "Web-Server"	
}	
Value	WorldWideWebPublishing
{	
Name = "W3SVC"	
StartupType = "Automatic"	
State = "	Value
}	

- A. Mastered
- B. Not Mastered

Answer: A

Explanation:

Values

Name

Service

WindowsFeature

WindowsProcess

Present

Source

Running

Stopped

Answer Area

WindowsFeature

WebServerRole

{

Ensure = "

Present

"

Name = "Web-Server"

}

Service

WorldWideWebPublishing

{

Name = "W3SVC"

StartupType = "Automatic"

State = "

Running

"

}

NEW QUESTION 153

You have a server named Server 1 that runs Windows Server 2016.

Server 1 has Internet connectivity. You have a Nano Server image.

You need to download and save a Nano Server package in the Nano Server image. The package is NOT included in the Windows Server 2016 installation media.

Which two cmdlets should you run on Server1.

- A. Set-PackageSource
- B. Install-PackageProvider
- C. Add-AppxProvisionedPackage
- D. Save-NanoServerPackage
- E. Add-WindowsPackage

Answer: BD

NEW QUESTION 154

DRAG DROP

Your network contains two Hyper-V servers named Server1 and Server2. Server1 has Windows Server 2012 R2 installed. Server2 has Windows Server 2016 installed.

You perform a live migration of a virtual machine named VM1 from Server1 to Server2. You need to create a production checkpoint for VM1 on Server2.

Which three Windows PowerShell cmdlets should you run in sequence? To answer, move the appropriate Windows PowerShell cmdlets from the list of actions to the answer area and arrange them in the correct order.

Passing Certification Exams Made Easy

visit - <https://www.2PassEasy.com>

Cmdlets

Set-VM

Update-VMVersion

Checkpoint-VM

Set-VMHost

Stop-VM

Answer Area

<

>

↑

↓

- A. Mastered
B. Not Mastered

Answer: A

Explanation:

Cmdlets

Set-VM

Update-VMVersion

Checkpoint-VM

Set-VMHost

Stop-VM

Answer Area

Stop-VM

Update-VMVersion

Checkpoint-VM

<

>

↑

↓

NEW QUESTION 158

Note: This question is part of a series of questions that present the same scenario. Each question in the series contains a unique solution that might meet the stated goals. Some question sets might have more than one correct solution, while others might not have a correct solution.

After you answer a question in this section, you will NOT be able to return to it. As a result, these questions will not appear in the review screen.

You have a server named Server1 that runs Windows Server 2016.

Server1 hosts a line-of-business application named App1. App1 has a memory leak that occasionally causes the application to consume an excessive amount of memory.

You need to log an event in the Application event log whenever App1 consumes more than 4 GB of memory.

Solution: You create a performance counter alert data collector. Does this meet the goal?

- A. Yes
B. No

Answer: A

NEW QUESTION 159

HOTSPOT

You deploy a new Hyper-V host named Server1 that runs Windows Server 2016. You implement receive side scaling (RSS) on Server1.

The chipset on Server1 does not support NetDMA.

All of the equipment on your network supports 10-Gbps connectivity. On Server1, you deploy a virtual machine named VM1.

You configure VM1 to aggregate all of the Windows and non-Windows tog files for all of the servers on the network.

VM1 has four virtual processors.

You discover that VM1 drops packets.

Which two options should you run? To answer, select the appropriate options in the answer area.

Answer Area

First action:

Enable TCP Chimney Offload on Server1.
Enable single root I/O virtualization (SR-IOV) on VM1.
Enable virtual machine queue (VMQ) on Server1 and VM1.

Second action:

Enable virtual TCP Chimney Offload on VM1.
Enable virtual Receive-side Scalling (vRSS) on VM1.
Enable single root I/O virtualization (SR-IOV) on Server1.

- A. Mastered
- B. Not Mastered

Answer: A

Explanation:

Answer Area

First action:

Enable TCP Chimney Offload on Server1.
Enable single root I/O virtualization (SR-IOV) on VM1.
Enable virtual machine queue (VMQ) on Server1 and VM1.

Second action:

Enable virtual TCP Chimney Offload on VM1.
Enable virtual Receive-side Scalling (vRSS) on VM1.
Enable single root I/O virtualization (SR-IOV) on Server1.

NEW QUESTION 161

DRAG DROP

You have a Hyper-V host named Server1 that runs Windows Server 2016. Server 1 hosts a virtual machine named VM1 that runs Windows Server 2016. Server1 has a USB 3.0 device attached to a PCI Express (PCIe) bus.

You need to provide VM1 with pass-through access to the USB 3.0 device.

Which three actions should you perform in sequence? To answer, move the appropriate actions from the list of actions to the answer area and arrange them in the correct order.

Actions

Answer Area

- On Server1, run the **Dismount-VMHostAssignableDevice** cmdlet.
- On Server1, run the **Add-VMAssignableDevice** cmdlet
- On Server1, run the **Disable-PnPDevice** cmdlet
- On VM1, run the **Enable-PnPDevice** cmdlet
- On VM1, ran the **Mount-VMHostAssignable Device** cmdlet

- 1
- 2
- 3

- A. Mastered
- B. Not Mastered

Answer: A

Explanation:

Actions

Answer Area

- On Server1, run the **Dismount-VMHostAssignableDevice** cmdlet.
- On Server1, run the **Add-VMAssignableDevice** cmdlet

- 1 On VM1, ran the **Mount-VMHostAssignable Device** cmdlet
- 2 On VM1, run the **Enable-PnPDevice** cmdlet
- 3 On Server1, run the **Disable-PnPDevice** cmdlet

NEW QUESTION 166

You have Nano Setver image named Disk1 .vhdx. You mount Disk1 .vhdx.
 You need to add a folder that contains several files to the image. Which tool or cmdlet you should use?

- A. Copy-Item
- B. Add-WindowsImage
- C. Add-WindowsPackage
- D. Edit-NanoServerImage

Answer: A

NEW QUESTION 169

Your network contains an Active Directory domain named contoso.com. The domain contains two servers, Server and Server2 that run Windows Server 2016. Each server has an operating system disk and four data disks. All of the disks are locally attached SATA disks. Data disk, is initialized as an MBR disk, and has a single NTFS volume.
 You plan to implement Storage Spaces Direct by using the data disks on Server1 and Server2. You need to prepare the data disks for the Storage Spaces Direct implementation.
 What should you do?

- A. Convert the data disks to dynamic disks.
- B. Format the volumes on the data disks as exFAT.

- C. Initialize the data disks as GPT disks and create an ReFS volume on each disk.
- D. Delete the volumes from the data disks.

Answer: D

NEW QUESTION 173

Your network contains an Active Directory domain. The domain contains two Hyper-V hosts. You plan to perform live migrations between the hosts. You need to ensure that the live migration traffic is authenticated by using Kerberos. What should you do first?

- A. From Server Manager, install the Host Guardian Service server role on a domain controller.
- B. From Active Directory Users and Computers, add the computer accounts for both servers to the Cryptographic Operators group.
- C. From Active Directory Users and Computers, modify the Delegation properties of the computer accounts for both servers.
- D. From Server Manager, install the Host Guardian Service server role on both servers.

Answer: C

Explanation:

If you have decided to use Kerberos to authenticate live migration traffic, configure constrained delegation before you proceed to the rest of the steps. To configure constrained delegation

NEW QUESTION 175

You have two Hyper-V hosts named Server1 and Server2 that run Windows Server 2016. Server1 and Server2 are connected to the same network. On Server1 and Server2, you create an external network switch named Switch1. You have the virtual machines shown in the following table.

Virtual machine name	IP address	Subnet mask	Hyper-V host
VM1	192.168.1.16	255.255.255.0	Server1
VM2	192.168.1.32	255.255.255.0	Server2
VM3	192.168.1.48	255.255.255.0	Server2

All three virtual machines are connected to Switch1.

You need to prevent applications in VM3 from being able to capture network traffic from VM1 or VM2. The solution must ensure that VM1 retains network connectivity.

What should you do?

- A. On Server2, configure the VLAN ID setting of Switch1.
- B. On Server2, create an external switch and connect VM3 to the switch.
- C. Modify the subnet mask of VM1 and VM2.
- D. Configure network virtualization for VM1 and VM2.

Answer: D

NEW QUESTION 180

You need to implement network virtualization.

On which object should you configure the virtual subnet ID?

- A. Virtual switch
- B. Hyper-V server
- C. VM
- D. Virtual network adapter

Answer: A

NEW QUESTION 183

Note: This question is part of a series of questions that use the same or similar answer choices. An answer choice may be correct for more than one question in the series. Each question is independent of the other questions in this series. Information and details provided in a question apply only to that question.

You have two servers named Server1 and Server2 that run Windows Server 2016. Server1 and Server2 have the Hyper-V server role installed and are nodes in a failover cluster.

On Server1, an administrator creates a virtual machine named VM1. You need to configure VM1 for high availability.

Which tool should you use?

- A. the clussvc.exe command
- B. the cluster.exe command
- C. the Computer Management snap-in
- D. the configurehyperv.exe command
- E. the Disk Management snap-in
- F. the Failover Cluster Manager snap-in
- G. the Hyper-V Manager snap-in
- H. the Server Manager app

Answer: F

Explanation:

References:

<http://windowsitpro.com/hyper-v/make-vm-highly-available-windows-server-2012>

NEW QUESTION 187

DRAG DROP

Your network contains an Active Directory domain. The domain contains two domain controllers named DC1 and DC2. DC2 is a virtual machine that is hosted on a Hyper-V host named HyperV1. DC1 holds the PDC emulator operations master role. You need to create a new domain controller named DC3 by using domain controller cloning. Which five actions should you perform in sequence before you can import the cloned virtual machine? To answer, move the appropriate actions from the list of actions to the answer area and arrange them in the correct order.
 NOTE: More than one order of answer choices is correct. You will receive credit for any of the correct orders you select.

Actions

- Stop DC2.
- Run the **New-ADDCCloneConfigFile** cmdlet.
- Modify the group membership of DC3.
- Export DC2.
- Run the **Get-ADDCCloningExcludedApplicationList** cmdlet.
- Modify the group membership of DC2.

Answer Area



- A. Mastered
- B. Not Mastered

Answer: A

Explanation:

Actions

- Stop DC2.
- Run the **New-ADDCCloneConfigFile** cmdlet.
- Modify the group membership of DC3.
- Export DC2.
- Run the **Get-ADDCCloningExcludedApplicationList** cmdlet.
- Modify the group membership of DC2.

Answer Area



NEW QUESTION 190

HOTSPOT

Your company has a main office and a branch office. The two offices connect to each other by using a WAN link.

Your network contains an Active Directory forest named contoso.com. The forest contains a domain controller named DC1. All of the domain controllers are located in the main office.

You install a read-only domain controller (RODC) named RODC1 in the branch office.

You create a user account for a new user named User1. You add User1 to the Allowed RODC Password Replication Group. User1 starts work on Monday.

You are notified that the WAN link will be down for maintenance on Monday. You need to ensure that User1 can log on in the branch office site on Monday.

Which command should you run? To answer, select the appropriate options in the answer area.

Answer Area

clonepr	/prp
ldifde	/replicate
repadmin	/rodcpwdrepl
replmon	/syncall

rodcl.fabrikam.com dcl.fabrikam.com "cn=user1,ou=users,dc=fabrikam,DC=com"

- A. Mastered
- B. Not Mastered

Answer: A

Explanation:

References:

[https://technet.microsoft.com/en-us/library/cc742095\(v=ws.11\).aspx](https://technet.microsoft.com/en-us/library/cc742095(v=ws.11).aspx)

NEW QUESTION 195

Note: This question is part of a series of questions that present the same scenario. Each question in the series contains a unique solution that might meet the stated goals. Some question sets might have more than one correct solution, while others might not have a correct solution.

After your answer a question in this section, you will NOT be able to return to it. As a result, these questions will not appear in the review screen.

Your network contains an Active Directory forest named contoso.com. You need to identify which server is the schema master.

Solution: From Windows PowerShell, you run Get-ADDomainController -Discover -Service 2. Does this meet the goal?

- A. Yes
- B. No

Answer: B

Explanation:

References:

<https://blogs.technet.microsoft.com/mempson/2007/11/08/how-to-find-out-who-has-your-fsmo-roles/>

NEW QUESTION 197

Note: This question is part of a series of questions that present the same scenario. Each question in the series contains a unique solution that might meet the stated goals. Some question sets might have more than one correct solution, while others might not have a correct solution.

After your answer a question in this section, you will NOT be able to return to it. As a result, these questions will not appear in the review screen.

Your network contains an Active Directory forest named contoso.com. You need to identify which server is the schema master.

Solution: From a command prompt, you run netdom query fsmo. Does this meet the goal?

- A. Yes
- B. No

Answer: A

Explanation:

References: <https://blogs.technet.microsoft.com/mempson/2007/11/08/how-to-find-out-who-has-your-fsmo-roles/>

NEW QUESTION 198

Your Network contains one Active Directory domain named contoso.com. You pilot DirectAccess on the network.

During the pilot deployment, you enable DirectAccess only for a group Contoso\Test Computers. Once the pilot is complete, you need to enable DirectAccess for all the client computers in the domain.

What should you do?

- A. From Windows PowerShell, run the Set-DAClient cmdlet.
- B. From Windows PowerShell, run the Set-DirectAccess cmdlet.
- C. From Active Directory Users and Computers, modify the membership of the Windows Authorization Access Group.
- D. From Group Policy Management, modify the security filtering of an object named Direct Access Client Setting Group Policy.

Answer: D

NEW QUESTION 203

You have a server named Server1.

You enable BitLocker Drive Encryption (BitLocker) on Server1.

You need to change the password for the Trusted Platform Module (TPM) chip. What should you run on Server1?

- A. Initialize-Tpm
- B. Import-TpmOwnerAuth
- C. repair-bde.exe
- D. bdehdcfg.exe

Answer: B

NEW QUESTION 206

You have two servers named Server1 and Server2. A firewall exists between Server1 and Server2. Both servers run Windows Server Update Services (WSUS).

Server1 downloads updates from Microsoft update.

Server2 must synchronize updates from Server1. Which port should to open on the firewall?

- A. 80
- B. 443
- C. 3389
- D. 8530

Answer: D

NEW QUESTION 210

DRAG DROP

You have a Hyper-V host named Server1 that runs Windows Server 2016.

The installation source files for Windows Server 2016 are located in D:\Source. You need to create a Nano Server image.

Which cmdlets should you run? To answer, drag the appropriate cmdlets to the correct targets. Each cmdlet may be used once, more than once, or not at all. You may need to drag the split bat between panes or scroll to view content.

Cmdlets

Add-WindowsImage

Import-Module

Install-Module

New-NanoServerImage

New-WindowsCustomImage

Answer Area

First cmdlet to run:

cmdlet

Second cmdlet to run:

cmdlet

- A. Mastered
- B. Not Mastered

Answer: A

Explanation:

Step 1: Import Module

Import-Module .\NanoServerImageGenerator.psm1 Step 2: New New-NanoServerImage

Create Nano Server Image VHDX

New-NanoServerImage -MediaPath .\Files -BasePath.\Base -TargetPath .\Images\NanoVMGA.vhdx References: <https://technet.microsoft.com/en-us/windows-server-docs/get-started/deploy-nano-server>

NEW QUESTION 214

You have a server named Server1 that runs Windows Server 2016 and is configured as a domain controller.

You install the DNS Server server role on Server1.

You plan to store a DNS zone in a custom Active Directory partition. You need to create a new Active Directory partition for the zone. What should you use?

- A. Set-DnsServer
- B. Active Directory Sites and Services
- C. Dns.exe
- D. Dnscmd.exe

Answer: D

Explanation:

[https://technet.microsoft.com/en-us/library/ee649181\(v=ws.10\).aspx](https://technet.microsoft.com/en-us/library/ee649181(v=ws.10).aspx)

NEW QUESTION 216

You have a server named Server1 that runs Windows Server 2016. Server1 has four SCSI disks and a storage pool named Pool1 that contains three disks. You create a virtual disk named Disk 1 that uses a mirrored layout. You create a partition named Partition1 that uses all of the available space on Disk 1. You need to extend Partition1. What should you do first?

- A. From Windows PowerShell, run the Resize-VirtualDisk cmdlet.
- B. From Windows PowerShell, run the Resize-StorageTier cmdlet.
- C. From Windows PowerShell, run the Expand-IscsiVirtualDisk cmdlet.
- D. From Disk Management, modify the properties of Partition1.

Answer: A

NEW QUESTION 217

Note: This question is part of a series of questions that use the same scenario. For your convenience, the scenario is repeated in each question. Each question presents a different goal and answer choices, but the text of the scenario is exactly the same in each question in this series.

Start of repeated scenario

Your network contains an Active Directory domain named contoso.com. The functional level of the forest and the domain is Windows Server 2008 R2. All servers in the domain run Windows Server 2016 Standard. The domain contains 300 client computers that run either Windows 8.1 or Windows 10.

The domain contains nine servers that are configured as shown in the following table.

Server name	Configuration	Planned changes
Server1	Domain controller	None
Server2	File server	Run Failover Clustering and Storage Spaces Direct
Server3	File server	Run Failover Clustering and Storage Spaces Direct
Server4	Hyper-V host	Run shielded virtual machines
Server5	Hyper-V host	None
Server6	Member server	Run Active Directory Federation Services (AD FS)
VM1	Virtual machine hosted on Server 5	None
VM2	Virtual machine hosted on Server 5	None
VM3	Virtual machine hosted on Server 5	None

The virtual machines are configured as follows:

Each virtual machine has one virtual network adapter.

VM1 and VM2 are part of a Network Load Balancing (NLB) cluster.

All of the servers on the network can communicate with all of the virtual machines. End of repeated scenario.

You plan to implement nested virtual machines on VM1.

Which two features will you be prevented from using for VM1?

- A. NUMA spanning
- B. live migration
- C. Dynamic Memory
- D. Smart Pathing

Answer: BC

Explanation:

References:

<https://blogs.technet.microsoft.com/virtualization/2015/10/13/windows-insider-preview-nested-virtualization/>

NEW QUESTION 221

DRAG DROP

You have a server named Server1 that runs Windows Server 2016.

On Server1 you use the Basic template to create a new Data Collector Set named CollectorSet1.

You need to configure data collection for the performance counters. The configuration must support the following requirements:

Data collection must run on a schedule.

Data collection must stop if there is less than 1 GB of free disk space.

What should you modify to meet each requirement? To answer, drag the appropriate settings to the correct requirements. Each setting may be used once, more than once, or not at all. You may need to drag the Split bar between panes or scroll to view content.

Settings to Modify

Answer Area

The Data Manager settings of CollectorSet1

Data collection must run on a schedule:

Setting to modify

The properties of the performance counter data collector

Data collection must stop if there is less than 1 GB of free disk space:

Setting to modify

The properties of CollectorSet1

- A. Mastered
- B. Not Mastered

Answer: A

Explanation:

Settings to Modify

Answer Area

The Data Manager settings of CollectorSet1

Data collection must run on a schedule:

The properties of CollectorSet1

Data collection must stop if there is less than 1 GB of free disk space:

The properties of the performance counter data collector

NEW QUESTION 223

HOTSPOT

You have four Hyper-V hosts named Server1, Server2, Server3 and Server4 that run Windows Server 2016. The hosts are nodes in a failover cluster. A virtual machine named VM1 is running in the failover cluster. The role for VM1 is configured as shown in the following exhibit.

```
Administrator: Windows PowerShell
PS C:\> Get-ClusterGroup vm1 | fl -

AntiAffinityClassNames : {}
AutoFailbackType       : 1
ColdStartSetting       : 0
Cluster                : Cluster1
DefaultOwner           : 1
Description             :
GroupType              : VirtualMachine
FailoverPeriod         : 1
FailoverThreshold      : 2
FailbackWindowEnd      : 6
FailbackWindowStart    : 20
IsCoreGroup            : False
Name                   : vm1
OwnerNode              : Server1
PersistentState         : 1
PreferredSite          : {}
Priority                : 2000
ResiliencyPeriod       : 4294967295
State                  : Online
StatusInformation      : 0
Id                     : 5304f522-4fbf-4d06-8fb6-c6b0e2c289e7

PS C:\>
```

Use the drop-down menus to select the answer choice that completes each statement based on the information presented in the graphic.

Answer Area

If VM1 fails three time in one hour, VM1 will [answer choice].

fail over to a different node

remain in a failed state

restart on the same node

If VM1 fails over to a different node at 14:00, VM1 will fail back to the preferred node [answer choice].

as soon as possible

automatically at 20:00

if the current node is highly loaded

only when triggered manually

- A. Mastered
- B. Not Mastered

Answer: A

Explanation:

References:
[https://msdn.microsoft.com/en-us/library/aa369665\(v=vs.85\).aspx](https://msdn.microsoft.com/en-us/library/aa369665(v=vs.85).aspx)

NEW QUESTION 225

DRAG DROP

You have a file server named Server1 that runs Windows Server 2016.
You need to create a report that lists all of the share permissions assigned to the security principals on Server1.
How should you complete the command? To answer, drag the appropriate cmdlets to the correct targets. Each cmdlet may be used once, more than once, or not at all. You may need to drag the split bar between panes or scroll to view content.

Cmdlets

Get-Acl

Get-SmbClientConfiguration

Get-SmbShare

Set-SmbPathAcl

Get-Credential

Get-SmbDelegation

Get-SmbShareAccess

Answer Area

Cmdlet

Cmdlet

- A. Mastered
- B. Not Mastered

Answer: A

Explanation:

Cmdlets

- Get-Acl
- Get-SmbClientConfiguration
- Get-SmbShare
- Set-SmbPathAcl
- Get-Credential
- Get-SmbDelegation
- Get-SmbShareAccess

Answer Area

Get-SmbShare | Get-SmbShareAccess

NEW QUESTION 228

You want to capture the state, data, and hardware configuration of a running virtual machine.

Which checkpoint can be very useful if you need to recreate a specific state or condition of a running virtual machine so that you can troubleshoot a problem?

- A. Production
- B. Standard

Answer: B

Explanation:

Standard checkpoints capture the state, data, and hardware configuration of a running virtual machine and are intended for use in development and test scenarios.

NEW QUESTION 229

Your IT company is constantly changing, with new users coming and going throughout the year.

One of your common tasks requires the deletion of user accounts for employees who have left the company.

Which command can be used to delete user accounts?

- A. LDIFDE
- B. Dsmode
- C. Dspropag
- D. Netsh

Answer: A

NEW QUESTION 232

One of your team previously opened Hyper-V Manager, selected a virtual machine and followed the Enable Replication wizard.

The process was completed successfully and replications were occurring as expected.

Several weeks later and you now want to run a planned failover. Which of the following steps is the correct starting point?

- A. Right-click the primary VM and select Replication > Planned Failover
- B. Right-click the replica VM and select Replication > Planned Failover
- C. Right-click the primary VM and select Replication > Extend Replication
- D. Right-click the replica VM and select Replication > Test Failover

Answer: A

NEW QUESTION 234

You have just finished installing Windows Server 2016 on a new server.

Your colleague has informed you that its essential that you must activate Windows Server. Which of the following command line tools can be used to Activate Windows Server?

- A. Netdom C:\windows\system32\slmgr.vbs -ato
- B. Netsh C:\windows\system32\slmgr.vbs -ato
- C. Ocsetup C:\windows\system32\slmgr.vbs -ato
- D. Cscript C:\windows\system32\slmgr.vbs -ato

Answer: D

Explanation:

The correct answer is Cscript C:\windows\system32\slmgr.vbs -ato

NEW QUESTION 237

The Host Guardian Service supports two different deployments of a Guarded fabric (attestation modes). The statement below describes which mode? Guarded hosts that can run Shielded VMs are approved based on their identity, measured boot sequence and code integrity policies so that you can ensure that these hosts are only running approved code.

- A. Admin-trusted attestation
- B. TPM-trusted attestation

Answer: B

Explanation:

TPM-trusted attestation offers the strongest possible protections but also requires more configuration steps. Host hardware and firmware must include TPM 2.0 and UEFI 2.3.1 with secure boot enabled.

TPM trusted attestation is the mode Microsoft recommend that you use because it offers stronger assurances but it requires that your Hyper-V hosts have TPM 2.0.

NEW QUESTION 242

Virtual Network Manager (available from the Hyper-V Manager snap-in) offers three types of virtual networks that you can use to define various networking topologies for virtual machines and the virtualization server.

Which type of virtual network is isolated from all external network traffic on the virtualization server, as well any network traffic between the management operating system and the external network.

- A. Private virtual network
- B. Internal virtual network

Answer: A

NEW QUESTION 244

For Windows Server 2016, Nano Server is distributed on the physical media, where you will find a NanoServer folder; this contains a .wim image and a subfolder called Packages. It is these package files that you use to add server roles and features to the VHD image, which you then boot to.

Assume that several variables have been configured already, which PowerShell command would you use to create a Nano Server which had the Hyper-V role, clustering, OEM Drivers and antimalware?

- A. New-NanoServerImage -MediaPath \$mediapath -BasePath \$basepath -TargetPath \$targetpath - ComputerName \$computername -OEMDrivers -Clustering -Defender -Compute
- B. New-NanoServerImage -MediaPath \$mediapath -BasePath \$basepath -TargetPath \$targetpath - ComputerName \$computername -OEMDrivers -Clustering -Storage -EnableRemoteManagementPort
- C. New-NanoServerImage -MediaPath \$mediapath -BasePath \$basepath -TargetPath \$targetpath - ComputerName \$computername -OEMDrivers -Defender -Containers - EnableRemoteManagementPort
- D. New-NanoServerImage -MediaPath \$mediapath -BasePath \$basepath -TargetPath \$targetpath - ComputerName \$computername -Defender -Storage -Compute - EnableRemoteManagementPort

Answer: A

NEW QUESTION 246

You want to boot a Linux Operating System with the Secure Boot option enabled in a virtual machine. This will be the first time you boot the OS. What must you do?

- A. Set the -BootOrder to HardDiskDrive
- B. Configure the virtual machine to use the Microsoft UEFI Certificate Authority
- C. You can't enable Secure Boot with Linux
- D. Set -EnableSecureBoot without specifying a template

Answer: B

Explanation:

Linux operating systems running on newer generation virtual machines can boot with the Secure Boot option enabled. Before you boot the virtual machine for the first time, you must configure the virtual machine to use the Microsoft UEFI Certificate Authority. You can do this from Hyper-V Manager, Virtual Machine Manager, or an elevated Windows Powershell session.

NEW QUESTION 250

Which terminology is being described below?

Time synchronization is critical for the proper operation of many Windows services and line- ofbusiness applications. The uses the Network Time Protocol (NTP) to synchronize computer clocks on the network so that an accurate clock value, or time stamp, can be assigned to network validation requests and resource access requests.

- A. Network Services Shell (Netsh)
- B. Listsvc
- C. Fixmbr
- D. Windows Time service (W32time)

Answer: D

Explanation:

The correct answer is Windows Time service (W32time)

NEW QUESTION 252

You have two Hyper-V hosts named Server1 and Server2 that run Windows Server 2016. Server1 hosts a virtual machine named VM1 that is in a Running state. On Server1, you export VM1 and then you import VM1 on Server2. What is the current state of VM1 on Server2?

- A. Paused
- B. Off
- C. Saved
- D. Running

Answer: C

Explanation:

References: <https://blog.workinghardinit.work/2016/06/16/live-export-a-running-virtual-machine-or-a-checkpoint/>

NEW QUESTION 255

HOTSPOT

You have a four-node Hyper-V cluster named Cluster1.

A virtual machine named VM1 runs on Cluster1. VM1 has a network adapter that connects to a virtual switch named Network1.

You need to prevent a network disconnection on VM1 from causing VM1 to move to another cluster node.

What command should you run? To answer, select the appropriate options in the answer area.

Answer Area

```
Remove-ClusterVMMonitoredItem -VirtualMachine VM1
Set-VM -VMName VM1
Set-VMNetworkAdapter -VMName VM1
Set-VMSwitch -Name Network1
```

```
EventSource Network
-lovInterruptModeration Off
-lovWeight 1
-NotMonitoredInCluster $true
-RouterGuard Off
```

- A. Mastered
- B. Not Mastered

Answer: A

Explanation:

Answer Area

```
Remove-ClusterVMMonitoredItem -VirtualMachine VM1
Set-VM -VMName VM1
Set-VMNetworkAdapter -VMName VM1
Set-VMSwitch -Name Network1
```

```
EventSource Network
-lovInterruptModeration Off
-lovWeight 1
-NotMonitoredInCluster $true
-RouterGuard Off
```

NEW QUESTION 260

You plan to install a Nano Server on a physical server named Nano1. Nano1 will host several virtual machines that will use live migration. Which package should you install on Nano1?

- A. Microsoft-NanoServer-SecureStartup-Package
- B. Microsoft-NanoServer-ShieldedVM-Package
- C. Microsoft-NanoServer-Compute-Package
- D. Microsoft-NanoServer-FailoverCluster-Package
- E. Microsoft-NanoServer-Storage -Package

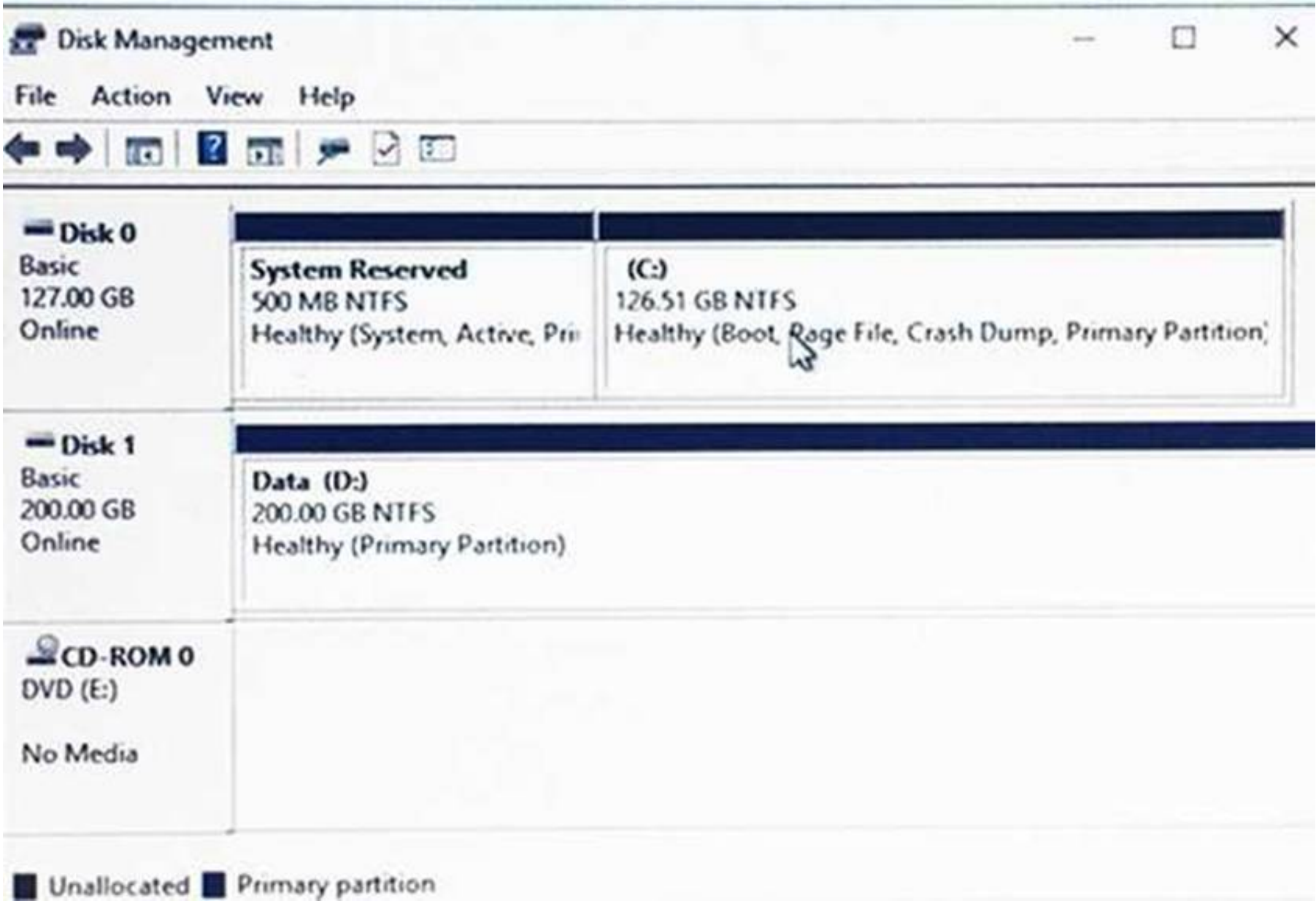
Answer: C

NEW QUESTION 263

DRAG DROP

You have a Hyper-V host named Server1 that runs Windows Server 2016. Server1 hosts a virtual machine named VM1. VM1 runs Windows Server 2016. VM1 uses a VHD for storage.

The disk configuration of VM1 is shown in the exhibit. (Click the Exhibit button.)



You need to increase the size of volume D to 400 GB.
Which cmdlets should you run on Server1 and VM1? To answer, drag the appropriate cmdlets to the correct servers. Each cmdlet may be used once, more than once, or not at all. You may need to drag the split bar between panes or scroll to view content.
NOTE: Each correct selection is worth one point.

Cmdlets	Answer Area
Resize-Partition	Cmdlet to run on Server1: <div>Cmdlet</div>
Resize-VHD	Cmdlet to run on VM1: <div>Cmdlet</div>
Resize-VirtualDisk	
Set-VHD	
Set-Volume	

- A. Mastered
- B. Not Mastered

Answer: A

Explanation:

Cmdlets	Answer Area
Resize-Partition	Cmdlet to run on Server1: Resize-VHD
Resize-VHD	Cmdlet to run on VM1: Resize-Partition
Resize-VirtualDisk	
Set-VHD	
Set-Volume	

NEW QUESTION 264

HOTSPOT

You have four servers named Server1, Server2, Server3, and Server4 that run Windows Server 2016. Server1 and Server2 are nodes in a failover cluster named FC1. Server3 and Server4 are nodes in a failover cluster named FC2.

You add the cluster roles shown in the following table.

Role name	Type	Failover cluster	Owner node
FS1(\FS1)	File server	FC1	Server1
FS2(\FS2)	Scale-Out File Server	FC2	Server3

You add a file share named Share1 to FS1. You add a file share named Share2 to FS2.

Which UNC paths can you use to access each share? To answer, select the appropriate options in the answer area.

NOTE: Each correct selection is worth one point.

Answer Area

UNC path to access Share1:	<div>▼</div> <div> <div>\\FS1\Share1 only</div> <div>\\Server1\Share1 only</div> <div>\\Server2\Share1 only</div> <div>\\Server1\Share1 and \\Server2\Share1 only</div> <div>\\Server1\Share1, \\Server2\Share1. and \\FS1\Share1</div> </div>
UNC path to access Share2:	<div>▼</div> <div> <div>\\FS2\Share2 only</div> <div>\\Server3\Share2 only</div> <div>\\Server4\Share2 only</div> <div>\\Server3\Share2 and \\Server4\Share2 only</div> <div>\\Server1\Share2, \\Server4\Share2. and \\FS2\Share2</div> </div>

- A. Mastered
- B. Not Mastered

Answer: A

Explanation:

References:

<https://blogs.technet.microsoft.com/canitpro/2013/12/10/step-by-step-scale-out-file-shares-and-continuously-available-file-services/>

<https://robertsmit.wordpress.com/2018/02/21/clustering-fileserver-data-deduplication-on-windows-2016-step-by-step-sofs-winserv-refs-windowsserver2016-dedupe/>

NEW QUESTION 268

You create a Storage Spaces Direct hyper-converged failover cluster. The cluster contains three nodes and a 1-TB Storage Spaces Direct volume. The cluster will store virtual machines.

You plan to extend the volume by adding an additional 3 TB.

What is the minimum amount of extra disk capacity required to accommodate extending the volume?

- A. 3TB on the coordinator node
- B. 3 TB per node
- C. 4 TB per node
- D. 4 TB on the coordinator node

Answer: B

Explanation:

References:

<https://docs.microsoft.com/en-us/windows-server/storage/storage-spaces/drive-symmetry-considerations>

NEW QUESTION 271

You have a Hyper-V host that runs Windows Server 2016.

You need to identify the amount of processor resources consumed by Hyper-V and virtual machines. Which counter should you use from Performance Monitor?

- A. \Hyper-V Hypervisor\Logical Processor
- B. \Hyper-V Hypervisor Root Virtual Processor(_Total)\% Guest Run Time
- C. \Hyper-V Hypervisor Virtual Processor(_Total)\% Hypervisor Run Time
- D. \Hyper-V Hypervisor Virtual Processor(_Total)\% Total Run Time
- E. \Hyper-V Hypervisor Logical Processor(_Total)\% Total Run Time

Answer: A

Explanation:

References:

[https://msdn.microsoft.com/en-us/library/cc768535\(v=bts.10\).aspx](https://msdn.microsoft.com/en-us/library/cc768535(v=bts.10).aspx)

NEW QUESTION 275

You have a server named Server1 that runs Windows Server 2016. Server1 is a member of contoso.com. Server1 has the Hyper-V role installed. Virtual machines on Server1 are connected to an external switch named Switch1.

You create a virtual machine named VM1 on Server1 by running the following cmdlets.

```
Add-VM VM1
Add-VMHardDiskDrive -VMName VM1 -ControllerType IDE -Path c:\VMs\Disk1.vhd
Add-VMNetworkAdapter -VMName VM1
```

You need to ensure that you can install the operating system on VM1 by using Windows Deployment Services.

What should you do?

- A. Modify the SwitchType parameter of Switch1.
- B. Modify the DefaultFlowMinimumBandwidthWeight parameter of Switch1.
- C. Add a SCSI controller to VM1.
- D. Add a legacy network adapter to VM1.

Answer: D

NEW QUESTION 279

You have a Hyper-V host named Server1 that runs Windows Server 2016. Server1 hosts a virtual machine named VM1 that runs Windows Server 2016. You install the Hyper-V server role on VM1.

You need to ensure that the virtual machines hosted on VM1 can communicate with the virtual machines hosted on Server1.

What should you do?

- A. On Server1, run the Set-VmNetworkAdapterIsolation cmdlet and specify the –MultiTenantStack Off parameter.
- B. On VM1, run the Set-VMNetworkAdapter cmdlet and specify the –MacAddressSpoofing Off parameter.
- C. On VM1, run the Set-VmNetworkAdapterIsolation cmdlet and specify the –MultiTenantStack On parameter.
- D. On Server1, run the Set-VMNetworkAdapter cmdlet and specify the –MacAddressSpoofing On parameter.

Answer: C

Explanation:

References: <https://docs.microsoft.com/en-us/powershell/module/hyper-v/set-vmnetworkadapterisolation?view=win10-ps>

NEW QUESTION 281

Note: This question is part of a series of questions that present the same scenario. Each question in the series contains a unique solution that might meet the stated goals. Some question sets might have more than one correct solution, while others might not have a correct solution.

You have a server named Server1 that runs Windows Server 2016. Server1 hosts a line-of-business application named App1. App1 has a memory leak that occasionally causes the application to consume an excessive amount of memory.

You need to log an event in the Application event log whenever App1 consume more than 4 GB of memory.

Solution: You create a performance counter data collector. Does this meet the goal?

- A. Yes
- B. No

Answer: B

NEW QUESTION 286

DRAG DROP

Your network contains an Active Directory domain named contoso.com. The domain contains a server named Server1 that runs Windows Server 2016. Server1 allows inbound connectivity from all computers in the contoso.com domain. Server1 has an IP address of 192.168.0.10. Server1 hosts a Windows container named Container1. Container1 hosts a website that is accessible on port 80. You need to ensure that you can use the Docker(?) client to manage Container1 from any computer in the domain. Which four cmdlets should you run in sequence? To answer, move the appropriate cmdlets from the list of cmdlets to the answer area and arrange them in the correct order.

Actions

Restart-Service docker

New-ContainerNetwork- Name nat1 – Mode NAT- SubnetPrefix 192.168.0.0/24 – GatewatAddress 192.168.0.10

Add-Content ‘c:\programdata\docker\config\daemon.json’ {“hosts”: [“tcp://127.0.0.1:80”, “npipe://”] }

Add-Content ‘c:\programdata\docker\config\daemon.json’ {“hosts”: [“tcp://0.0.0.0:2375”, “npipe://”] }]

New-Item-Type File c:\programData\docker\confing\daemon.json

Answer Area

- A. Mastered
- B. Not Mastered

Answer: A

Explanation:

New-Item-Type File
c:\programData\docker\confing\daemon.json

Add-Content
‘c:\programdata\docker\config\daemon.json’
{“hosts”: [“tcp://0.0.0.0:2375”, “npipe://”] }]

Restart-Service docker

New-ContainerNetwork- Name nat1 – Mode NAT- SubnetPrefix 192.168.0.0/24 – GatewatAddress 192.168.0.10

NEW QUESTION 288

You have three Hyper-V hosts named Server1, Server2, and Server3 that run Windows Server 2016. The servers are nodes in a failover cluster. The failover cluster contains two virtual machines named VM1 and VM2. The roles for VM1 and VM2 have the following configurations.

```
PS C:\> Get-ClusterGroup vm1,vm2 | fl *
```

AntiAffinityClassNames	: {}
AutoFailbackType	: 0
ColdStartSetting	: 0
Cluster	: Cluster1
DefaultOwner	: 1
Description	:
GroupType	: VirtualMachine
FailoverPeriod	: 6
FailoverThreshold	: 4294967295
FailbackWindowEnd	: 4294967295
FailbackWindowStart	: 4294967295
IsCoreGroup	: False
Name	: vm1
OwnerNode	: Server1
PersistentState	: 1
PreferredSite	: {}
Priority	: 0
ReliliencyPeriod	: 429467295
State	: Online
StatusInformation	: 0
Id	: d02c87d1-8alc-4ffb-b87d-adf059416f25
AntiAffinityClassNames	: {}
AutoFailbackType	: 0
ColdStartSetting	: 0
Cluster	: Cluster1
DefaultOwner	: 1
Description	:
GroupType	: VirtualMachine
FailoverPeriod	: 6
FailoverThreshold	: 4294967295
FailbackWindowEnd	: 4294967295
FailbackWindowStart	: 4294967295
IsCoreGroup	: False
Name	: vm2
OwnerNode	: Server1
PersistentState	: 1
PreferredSite	: {}
Priority	: 3000
ResiliencyPeriod	: 4294967295
State	: Online
StatusInformation	: 0
Id	: ab38e657-bfcf-463d-a88b-d4e99aff4ef1

All of the nodes in the failover cluster have sufficient resources to run VM1 and VM2 concurrently. VM1 and VM2 fail over to Server3. What is the state of each virtual machine after the failover?

- A. Both VM1 and VM2 are stopped.
- B. Both VM1 and VM2 are running.
- C. VM1 is stopped and VM2 is running.
- D. VM1 is stopped and VM2 is paused.

Answer: C

Explanation:

References:

[https://msdn.microsoft.com/en-us/library/jj151956\(v=vs.85\).aspx](https://msdn.microsoft.com/en-us/library/jj151956(v=vs.85).aspx)

NEW QUESTION 293

You have two Hyper-V hosts named Server1 and Server2 that run Windows Server 2016. The hosts are nodes in failover cluster. You have a virtual machine named VM1. VM1 connects to a virtual switch named vSwitch1. You discover that VM1 automatically live migrates when vSwitch temporarily disconnects. You need to prevent VM1 from being live migrated when vSwitch1 temporarily disconnects. What should you do?

- A. Run the Set-VMNetworkAdapter cmdlet and set StormLimit to 0.
- B. From the network adapter setting of VM1, disable the Heartbeat integration service.
- C. Run the Set-VMNetworkAdapter cmdlet and set IsManagementOS to False.
- D. From the network adapter setting of VM1, disable the Protected network setting.

Answer: D

NEW QUESTION 298

You have a Windows Server 2016 failover cluster named Cluster1 that contains three nodes named Server1, Server2, and Server3. Each node hosts several virtual machines. The virtual machines are configured to fail over to another node in Cluster1 if the hosting node fails. You need to ensure that if the Cluster service fails on one of the nodes, the virtual machine of that node will fail over immediately. Which setting should you configure?

- A. FailureConditionLevel
- B. QuarantineDuration
- C. ResiliencyPeriod
- D. ResiliencyLevel

Answer: D

Explanation:

References:

<https://blogs.msdn.microsoft.com/clustering/2015/06/03/virtual-machine-compute-resiliency-in-windows-server-2016/>

NEW QUESTION 302

HOTSPOT

You have a Windows Server 2016 failover cluster that has a cluster network named ClusterNetwork1. You need to ensure that ClusterNetwork1 is enabled for cluster communication only.

What command should you run? To answer, select the appropriate options in the answer area.

Answer Area

(Get-ClusterNetwork
Get-ClusterResource
Set-ClusterParameter
Update-ClusterIPResource ClusterNetwork1) . ID
Metric
Role
State =1

- A. Mastered
- B. Not Mastered

Answer: A

Explanation:

Answer Area

(Get-ClusterNetwork
Get-ClusterResource
Set-ClusterParameter
Update-ClusterIPResource ClusterNetwork1) . ID
Metric
Role
State =1

NEW QUESTION 305

HOTSPOT

You are deploying Network Load Balancing (NLB) to three web servers named Server1, Server2, and Server3. The web servers have the following IP addresses:

Server1: 192.168.2.101

Server2: 192.168.2.102 Server3:192.168.2.103

The IP address used by NLB is 192.168.2.120.

Which IP address or addresses will be configured on each server? To answer, select the appropriate options in the answer area.

Answer Area

Server1:

	▼
192.168.2.101 only	
192.168.2.120 only	
192.168.2.101 and 192.168.2.120 only	
192.168.2.101, 192.168.2.102, and 192.168.2.103 only	
192.168.2.101, 192.168.2.102, 192.168.2.103 and 192.168.2.120	

Server2:

	▼
192.168.2.102 only	
192.168.2.120 only	
192.168.2.102 and 192.168.2.120 only	
192.168.2.101, 192.168.2.102, and 192.168.2.103 only	
192.168.2.101, 192.168.2.102, 192.168.2.103 and 192.168.2.120	

Server3:

	▼
192.168.2.103 only	
192.168.2.120 only	
192.168.2.103 and 192.168.2.120 only	
192.168.2.101, 192.168.2.102, and 192.168.2.103 only	
192.168.2.101, 192.168.2.102, 192.168.2.103 and 192.168.2.120	

- A. Mastered
- B. Not Mastered

Answer: A

Explanation:

Answer Area

Server1:

	▼
192.168.2.101 only	
192.168.2.120 only	
192.168.2.101 and 192.168.2.120 only	
192.168.2.101, 192.168.2.102, and 192.168.2.103 only	
192.168.2.101, 192.168.2.102, 192.168.2.103 and 192.168.2.120	

Server2:

	▼
192.168.2.102 only	
192.168.2.120 only	
192.168.2.102 and 192.168.2.120 only	
192.168.2.101, 192.168.2.102, and 192.168.2.103 only	
192.168.2.101, 192.168.2.102, 192.168.2.103 and 192.168.2.120	

Server3:

	▼
192.168.2.103 only	
192.168.2.120 only	
192.168.2.103 and 192.168.2.120 only	
192.168.2.101, 192.168.2.102, and 192.168.2.103 only	
192.168.2.101, 192.168.2.102, 192.168.2.103 and 192.168.2.120	

NEW QUESTION 307

HOTSPOT

Note: This question is part of a series of questions that use the same scenario. For your convenience, the scenario is repeated in each question. Each question presents a different goal and answer choices, but the text of the scenario is exactly the same in each question in this series.

Your network contains an Active Directory domain named contoso.com. The functional level of the forest and the domain is Windows Server 2008 R2. All servers in the domain run Windows Server 2016 Standard. The domain contains 300 client computers that run either Windows 8.1 or Windows 10.

The domain contains nine servers that are configured as shown in the following table.

Name	Configuration	Planned changes
Server1	Domain controller	None
Server2	File server	Run Failover Clustering and Storage Spaces Direct
Server3	File server	Run Failover Clustering and Storage Spaces Direct
Server4	Hyper-V host	Run shielded virtual machines
Server5	Hyper-V host	None
Server6	Member server	Run Active Directory Federation Services (AD FS)
VM1	Virtual machine hosted on Server5	None
VM2	Virtual machine hosted on Server5	None
VM3	Virtual machine hosted on Server5	None

The virtual machines are configured as follows:

Each virtual machine has one virtual network adapter.

VM1 and VM2 are part of a Network Load Balancing (NLB) cluster.

All of the servers on the network can communicate with all of the virtual machines. For VM1 and VM2, you plan to use live migration between Server4 and Server5.

You need to ensure that when the virtual machines migrate, they maintain connectivity to the network.

Which virtual switch names and connection types should you use on each server? To answer, select the appropriate options in the answer area.

Answer Area

Virtual switch connection type on Server4:

▼

External network

Internal network

Private network

Virtual switch connection type on Server5:

▼

External network

Internal network

Private network

Virtual switch name on Server4:

▼

External on Server4

Network switch

Server4

Virtual switch name on Server5:

▼

External on Server5

Network switch

Server5

- A. Mastered
- B. Not Mastered

Answer: A

Explanation:

Answer Area

Virtual switch connection type on Server4:

External network
Internal network
Private network

Virtual switch connection type on Server5:

External network
Internal network
Private network

Virtual switch name on Server4:

External on Server4
Network switch
Server4

Virtual switch name on Server5:

External on Server5
Network switch
Server5

NEW QUESTION 309

Note: This question is part of a series of questions that present the same scenario. Each question in the series contains a unique solution that might meet the stated goals. Some question sets might have more than one correct solution, while others might not have a correct solution.

After you answer a question in this section, you will NOT be able to return to it. As a result, these questions will not appear in the review screen.

You network contains an Active Directory domain named contoso.com.

You need to create a Nano Server image named Nano1 that will be used as a virtualization host. The Windows Server 2016 source files are located in drive D.

Solution: You run the following cmdlet.

```
New-NanoServerImage -Edition Datacenter -DeploymentType Host -Package Microsoft-NanoServer-Compute-Package -MediaPath 'D:\' -TargetPath C:\Nano1\Nano1.wim -ComputerName Nano1 -DomainName Contoso.com
```

Does this meet the goal?

- A. Yes
- B. No

Answer: A

NEW QUESTION 310

Note: This question is part of a series of questions that present the same scenario. Each question in the series contains a unique solution that might meet the stated goals. Some question sets might have more than one correct solution, while others might not have a correct solution.

After you answer a question in this section, you will NOT be able to return to it. As a result, these questions will not appear in the review screen.

After you answer a question in this section, you will NOT be able to return to it. As a result, these questions will not appear in the review screen.

Your network contains an Active Directory domain. The domain contains a new file server named Server1 that runs a Server Core installation of Windows Server 2016.

Server1 has an ReFS-formatted volume D: and an NTFS-formatted volume E:. the- volumes do not contain any data.

You Install the Data Deduplication role service on Server1.

You need to implement Data Deduplication for volumes on D: and E:.

Solution; From Windows PowerShell. you run Format-Volume D: -FileSystem NTFS and Enable- DeDupVolume-Volume D:,E:.

Does this meet the goal?

- A. Yes
- B. No

Answer: A

NEW QUESTION 314

Note: This question is part of a series of questions that present the same scenario. Each question in the series contains a unique solution that might meet the stated goals. Some question sets might have more than one correct solution, while others might not have a correct solution.

After you answer a question in this section, you will NOT be able to return to it. As a result, these questions will not appear in the review screen.

You have a server named Server1 that runs Windows Server 2016.

You plan to use Windows Server Backup to back up all of the data on Server 1. You create a new volume on Server 1. You need to ensure that the new volume can be used as a backup target. The backup target must support incremental backups. Solution: You assign a drive letter to the volume, and you format the volume by using ex FAT. Does this meet the goal?

- A. Yes
- B. No

Answer: B

NEW QUESTION 317

Note: This question is part of a Series of questions that use the same or similar answer choices. An answer choice may be correct for more than one question in the series. Each question is Independent of the other questions in this series. Information and details provided in a question apply only to that question. You have two servers named Server 1 and Server 2 that run Windows Server 2016. Server 1 and server 2 have the Hyper-V server role installed and are nodes in a failover Cluster. On Server 1, an administrator creates a virtual machine named VM1. You need to configure VM1 for high availability. Which tool should you use?

- A. the clussvc.exe command
- B. the cluster.exe command
- C. the Computer Management snap-in
- D. the configurehyperv.exe command
- E. the Disk Management snap-in
- F. the Failover Cluster Manager snap-in
- G. the Hyper V Manager snap-in
- H. the Server Manager app

Answer: F

NEW QUESTION 321

You have Nano Server image named Disk1.vhdx. You mount Disk1.vhdx. You need to add a folder that contains several files to the image. Which tool or cmdlet should you use?

- A. File Explorer
- B. Add-Windows Image
- C. Nano Server Image Builder
- D. Server Manager

Answer: D

NEW QUESTION 323

DRAG DROP

Note: This question is part of a series of questions that use the same scenario. For your convenience, the scenario is repeated in each question. Each question presents a different goal and answer choices, but the text of the scenario is exactly the same in each question in this series. A company named Contoso, Ltd. has several servers that run Windows Server 2016. Contoso has a Hyper-V environment that uses failover clustering and Windows Server Update Services (WSUS). The environment contains several Windows containers and several virtual machines. The WSUS deployment contains one upstream server that is located on the company's perimeter network and several downstream servers located on the internal network. A firewall separates the upstream server from the downstream servers. You plan to deploy a human resources application to a new server named HRServer5. HRServer5 contains a FAT32-formatted data volume. The CIO of Contoso identifies the following requirements for the company's IT department: Deploy a failover cluster to two new virtual machines. Store all application databases by using Encrypted File System (EFS). Ensure that each Windows container has a dedicated IP address assigned by a DHCP server. Produce a report that lists the processor time used by all of the processes on a server named Server1 for five hours. Encrypt all communication between the internal network and the perimeter network, including all WSUS communications. Automatically load balance the virtual machines hosted in the Hyper-V cluster when processor utilization exceeds 70 percent. You need to configure the storage solution for the planned failover cluster. You create two new generations 2 virtual machines on two separate Hyper-V hosts named VM11 and VM12. Which three actions should you perform in sequence next? To answer, move the appropriate actions from the list of actions to the answer area and arrange them in the correct order.

Actions

For each virtual machine, create a new system disk that uses the VNDX format and store the disks in Share1.

Create a VHDX file and store the file in the Clustered Shared Volume (CSV).

For each virtual machine, create a new system disk that uses the VHDX format and store the virtual machines on the Cluster Shared Volume (CSV).

Create a network share named Share1.

Create a Clustered Shared Volume (CSV).

To each virtual machine, add the VHDX file as a shared drive.

Answer Area

1

2

3

- A. Mastered
- B. Not Mastered

Answer: A

Explanation:

Actions

For each virtual machine, create a new system disk that uses the VNDX format and store the disks in Share1.

Create a network share named Share1.

To each virtual machine, add the VHDX file as a shared drive.

Answer Area

1

Create a Clustered Shared Volume (CSV).

2

For each virtual machine, create a new system disk that uses the VHDX format and store the virtual machines on the Cluster Shared Volume (CSV).

3

Create a VHDX file and store the file in the Clustered Shared Volume (CSV).

NEW QUESTION 327

Note This question is part of a series of questions that use the same scenario. For your convenience,

the scenario is repeated in each question. Each question presents a different goal and answer choices, but the text of the scenario is exactly the same in each question in this series.

Start of Repeated Scenario:

A company named Contoso, Ltd. has several servers that run Windows Server 2016. Contoso has a Hyper V environment that uses failover clustering and Windows Server Update Services (WSUS). The environment contains several Windows containers and several virtual machines.

The WSUS deployment contains one upstream server that is located on the company's perimeter network and several downstream servers located on the internal network. A firewall separates the upstream server from the downstream servers.

You plan to deploy a human resources application to a new server named HRServer5. HRServer5 contains a FAT32-formatted data volume.

The CIO of Contoso identifies the following requirements for the company's IT department:

- Deploy failover cluster to two new virtual machines.
- Store all application databases by using Encrypted File System (EFS).
- Ensure that each Windows container has a dedicated IP address assigned by a DHCP server
- Produce a report that lists the processor time used by all of the processes on a server named Server 1 for five hours.

Encrypt all communication between the internal network and the perimeter network, including all WSUS communications.

- Automatically load balance the virtual machines hosted in the Hyper-V cluster when processor utilization exceeds 70 percent.

End of Repeated Scenario.

You need to modify the Hyper V cluster to meet the load balancing requirement for the virtual machine. Which command should you run?

- A. network address translation (NAT)
- B. I2bridge
- C. I2tunnel
- D. transparent

Answer: A

NEW QUESTION 330

HOTSPOT

You have a server named Server1 that runs Windows Server 2016.

On Server1, you have a custom image of Windows Server 2016 Standard in a file named Image1.wim. The image is mounted to C:\Folder1.

You discover corrupted files in the WinSxS folder of the mounted image.

From the Windows Server 2016 installation media, you mount an image of Windows Server 2016 Standard from Install.wim to C:\Folder2.

You need to repair the corrupted image.

Which command should you run? To answer, select the appropriate options in the answer area. NOTE: Each correct selection is worth one point.

Answer Area

Dism /Cleanup-Image /Image:

C:\Folder1
C:\Folder1\image1.wim
C:\Folder2\install.wim:1
C:\Folder2\Windows

/CheckIntegrity
/RestoreHealth
/ScanHealth
/StartComponentCleanup

/Source:

C:\Folder1
C:\Folder1\image1.wim
C:\Folder2\install.wim:1
C:\Folder2\Windows

- A. Mastered
- B. Not Mastered

Answer: A

Explanation:

References: <https://docs.microsoft.com/en-us/windows-hardware/manufacture/desktop/repair-a-windows-image>

NEW QUESTION 335

You have a Scale-Out File Server that has a share named Share 1. Share1 contains a virtual disk trie named Disk1.vhd.

You plan to create a guest failover cluster.

You need to ensure that you can use the virtual disk as a shared virtual disk for the guest failover* Cluster.

Which cmdlet should you use?

- A. Optimize-VHD
- B. Convert-VHD
- C. Set-VHO
- D. Optimize-VHDSets

Answer: A

NEW QUESTION 336

Note: This question is part of a series questions that present the same scenario, Each question in the series contains a unique solution that might meet the stated goals. Some question sets might have more than one correct solution, while others might not have a correct solution.

After you answer a question in this section, you will NOT be able to return to it. As a result, these questions will not appear in the review screen.

You have a server named Server1 that runs Windows Server 2016. Server1 is a Docker Host.

You are creating a Dockerfile to build a Docker image.

You need to add a file named File1.txt from Server1 to C:\folder1\ in the Docker image.

What are two possible commands that you can use to achieve the goal? Each correct answer presents a complete solution.

NOTE: Each correct selection is worth one point.

- A. COPY file1.txt c:/folder1/
- B. copy-item file1.txt folder1\file1.txt
- C. ROBOCOPY file.txt \folder1\
- D. XCOPY file1.txt c:\folder1\
- E. ADD file1.txt /folder1/

Answer: AE

NEW QUESTION 340

Your network contains an Active Directory domain.

The domain contains two Hyper-V hosts.

You plan to perform live migrations between the hosts.

You need to ensure that the live migration traffic is authenticated by using Kerberos. What should you do first?

- A. From Server Manager, install the Host Guardian Service server role on a domain controller.
- B. From Active Directory Users and Computers, add the computer accounts for both servers to the Cryptographic Operators group.
- C. From Active Directory Users and Computers, modify the Delegation properties of the computer accounts for both servers.
- D. From Server Manager, install the Host Guardian Service server role on both servers.

Answer: C

Explanation:

If you have decided to use Kerberos to authenticate live migration traffic, configure constrained delegation before you proceed to the rest of the steps.

NEW QUESTION 345

Your network contains an Active Directory domain named adatum.com. The domain contains a Network Load Balancing (NLB) cluster as shown in the exhibit. (Click the Exhibit button.)

Which hosts will respond to requests sent to nlb.adatum.com?

Log Entry ID	Date	Time	Cluster	Host	Description
0040	7/8/2017	2:07:53 AM	192.168.10...	SERVER2	End configuration change
00401	7/8/2017	2:07:53 AM	192.168.10...	SERVER1	Update 6 succeeded [double click
0042	7/8/2017	2:07:53 AM	192.168.10...	SERVER1	End configuration change

- A. Server1 only
- B. Server2 only

- C. Server1 an Server2 only
- D. Server1 ,Server2

Answer: B

NEW QUESTION 347

You have a server named Server1 that runs Windows Server 2016. The Docker daemon run on Server1.
You need to ensure that members of a security group named Docker Administrators administer Docker.
What should you do?

- A. Run the Set-Service cmdlet.
- B. Run the sc config command.
- C. Modify the Security settings of Docker
- D. Modify the Security settings of Docker.exe.

Answer: B

Explanation:

<https://docs.microsoft.com/en-us/virtualization/windowscontainers/manage-docker/configure-docker-daemon>

NEW QUESTION 349

HOTSPOT
You have a server named Server1 that runs Windows Server 2016. You create a storage pool named Pool1. Pool1 contains three disks.
You need to create a two-way mirror storage space from the disks in Pool1.
Which command should you run? To answer, select the appropriate options in the answer area. NOTE: Each correct selection is worth one point.

Answer Area

New-StorageSunsystemVirtualDisk
New-VHD
New-VirtualDisk
New-Volume

-StoragePoolFirendlyName Pool1 -FirendlyName Space1-

-UseMaximumSize -ResiliencySettingName Mirror

-NumberOfDataCopies

1
2
3

-NumberOfColumns-

1
2
3

- A. Mastered
- B. Not Mastered

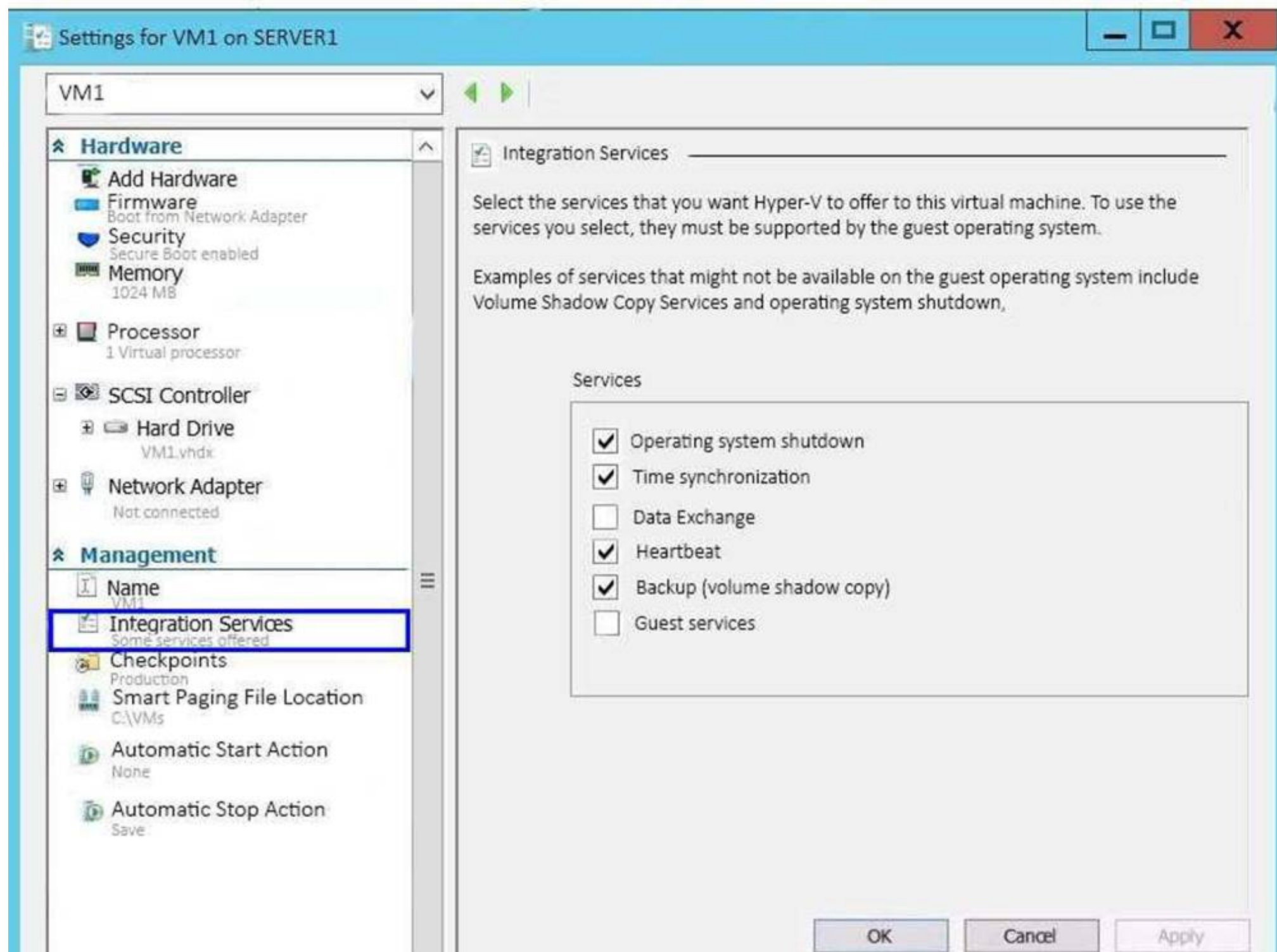
Answer: A

Explanation:

References: <https://charbelnemnom.com/2014/09/step-by-step-how-to-create-a-two-way-mirrored-storage-space-via-powershell-storagespaces-powershell/>

NEW QUESTION 352

Note: This question is part of a series of questions that present the same scenario. Each question in the series contains a unique solution that might meet the stated goals. Some question sets might have more than one correct solution, while others might not have a correct solution.
After you answer a question in this section, you will NOT be able to return to it. As a result, these questions will not appear in the review screen.
You have a Hyper-V host named Server1 that hosts a virtual machine named VM1. Server1 and VM1 run Windows Server 2016.
The settings for VM1 are configured as shown in the exhibit. (Click the Exhibit button.)



You need to ensure that you can use the Copy-VMFile cmdlet on Server1 to copy files from VM1. Solution: You enable the Guest services integration service for VM1.

Does this meet the goal?

- A. Yes
- B. No

Answer: A

Explanation:

References: [https://technet.microsoft.com/en-us/library/dn798297\(v=ws.11\).aspx](https://technet.microsoft.com/en-us/library/dn798297(v=ws.11).aspx)

NEW QUESTION 357

HOTSPOT

Your network contains an Active Directory domain named contoso.com. The domain contains three clusters named FC1, FC2, and FC3. The domain contains servers that run Windows Server 2016. The servers are configured as shown in the following table.

Server name	CPU	Memory	Cluster
Server1	Intel Xeon E3	128 GB	FC1
Server2	Intel Xeon E3	128 GB	FC1
Server3	Intel Xeon E3	64 GB	FC2
Server4	Intel Xeon E3	64 GB	FC2
Server5	AMD Opteron	256 GB	FC3
Server6	AMD Opteron	256 GB	FC3

Server1 hosts a highly available virtual machine named VM1.

You are creating a maintenance plan for the servers, and you are evaluating how to move VM1 to the different clusters.

You need to identify the fastest method to move VM1 to FC2 and FC3.

Which method should you identify for each cluster? To answer, select the appropriate options in the answer area.

NOTE: Each correct selection is worth one point.

Answer Area

Fastest method to move
VM1 to FC2:

Export and import
Live migration
Quick migration

Fastest method to move
VM1 to FC3:

Export and import
Live migration
Quick migration

- A. Mastered
- B. Not Mastered

Answer: A

Explanation:

References: <https://www.petri.com/move-virtual-machine-between-hyper-v-hosts>

NEW QUESTION 362

HOTSPOT

You have a Windows Server 2016 failover cluster named Cluster1. You need to implement Cloud Witness for Cluster 1.

What should you do? To answer, select the appropriate options in the answer area. NOTE: Each correct selection is worth one point.

Answer Area

In Microsoft Azure, create:

An availability set
An integration account
A public IP address
A Recovery Services vault
A storage account

On Cluster1, run:

Add-ClusterResource
Add-ClusterResourceType
Set-ClusterParameter
Set-ClusterQuorum

- A. Mastered
- B. Not Mastered

Answer: A

Explanation:

References:

<https://www.vembu.com/blog/deploying-a-azure-cloud-witness-for-a-failover-cluster-in-windows-server-2016/>
<https://docs.microsoft.com/en-us/powershell/module/failoverclusters/set-clusterquorum?view=win10-ps>

NEW QUESTION 365

Your network contains an Active Directory domain named contoso.com. The domain contains a Hyper-V host named Server1 that runs Windows Server 2016. Server1 hosts four virtual machines that are members of the domain. The virtual machines are configured as shown in the following table.

Virtual machine name	Operating system	Virtual machine generation	Type of VHD file
VM1	Windows 10	2	VHD
VM2	Windows Server 2016	2	VHD
VM3	Windows Server 2012 R2	2	VHDX
VM4	Windows Server 2016	1	VHDX

Which virtual machines can you manage by using PowerShell Direct?

- A. VM1, VM2, and VM3
- B. VM1, VM2, and VM4
- C. only VM2
- D. only VM4

Answer: B

Explanation:

To use PowerShell Direct, the host operating system must run at least Windows 10 or Windows Server 2016.

References: <https://docs.microsoft.com/en-us/windows-server/virtualization/hyper-v/manage/manage-windows-virtual-machines-with-powershell-direct#whats-required-to-use-powershell-direct>

NEW QUESTION 369

Note: This question is part of a series of questions that present the same scenario. Each question in the series contains a unique solution that might meet the

stated goals. Some question sets might have more than one correct solution, while others might not have a correct solution. After you answer a question in this section, you will NOT be able to return to it. As a result, these questions will not appear in the review screen. You network contains an Active Directory forest named contoso.com. The forest contains a child domain named eu.contoso.com. You plan to implement live migration between two Hyper-V hosts that run Windows Server 2016. The hosts are configured as shown in the following table.

Host name	Configuration
Host1	<ul style="list-style-type: none"> Is a member of the contoso.com domain Uses an Intel Xeon processor released in 2012 Has an external virtual switch named Switch1 Hosts a virtual machine named VM1 that connects to Switch1
Host2	<ul style="list-style-type: none"> Is a member of the eu.contoso.com domain Uses an Intel Xeon processor released in 2016 Has an external virtual switch named Switch1

You need to ensure that you can perform a live migration of VM1 from Host1 to Host2.

Solution: You shut down VM1, configure the processor compatibility settings, and then start VM1. Does meet the goal?

- A. Yes
- B. No

Answer: A

NEW QUESTION 371

You have two servers named Server1 and Server2 that run Windows Server 2016.

You plan to implement Storage Replica to replicate the contents of volumes on Server1 to Server2. You need to ensure that the replication traffic between the servers is limited to a maximum of 100 Mbps.

Which cmdlet should you run?

- A. New-NetQosPolicy
- B. Set-NetworkController
- C. New-NetTransportFilter
- D. New-StorageQosPolicy
- E. Set-NetTCPSetting
- F. Set-NetUDPSetting

Answer: A

Explanation:

References: <https://docs.microsoft.com/en-us/powershell/module/netqos/new-netqospolicy?view=win10-ps>

NEW QUESTION 376

Note: This question is part of a series of questions that present the same scenario. Each question in the series contains a unique solution that might meet the stated goals. Some question sets might have more than one correct solution, while others might not have a correct solution.

After you answer a question in this section, you will NOT be able to return to it. As a result, these questions will not appear in the review screen.

Your network contains an Active Directory forest.

You install Windows Server 2016 on 10 virtual machines.

You need to deploy the Web Server (IIS) server role identically to the virtual machines.

Solution: You use Windows PowerShell Desired State Configuration (DSC) to create a default configuration, and then you apply the configuration to the virtual machines.

Does this meet the goal?

- A. Yes
- B. No

Answer: A

Explanation:

References:

<https://www.simple-talk.com/sysadmin/powershell/powershell-desired-state-configuration-the-basics/>

NEW QUESTION 379

DRAG DROP

Your network contains an Active Directory domain named contoso.com. The domain contains a server named Server1 that runs Windows Server 2016.

Server1 allows inbound connectivity from all computers in the contoso.com domain. Server1 has an IP address of 192.168.0.10.

Server1 hosts a Windows container named Container1. Container1 hosts a website that is accessible on port 80.

You need to ensure that you can use the Docker client to manage Container1 from any computer in the domain.

Which three cmdlets should you run in sequence? To answer, move the appropriate cmdlets from the list of cmdlets to the answer area and arrange them in the correct order.

Actions

Answer Area

Restart-Service docker

New-ContainerNetwork- Name nat1 – Mode NAT- SubnetPrefix 192.168.0.0/24 – GatewatAddress 192.168.0.10

Add-Content 'c:\programdata\docker\config\daemon.json' '{"hosts": [{"tcp://127.0.0.1:80", "npipe://"}]}'

Add-Content 'c:\programdata\docker\config\daemon.json' '{"hosts": [{"tcp://0.0.0.0:2375", "npipe://" }]}'

New-Item-Type File c:\programData\docker\config\daemon.json



- A. Mastered
- B. Not Mastered

Answer: A

Explanation:

References:

<https://glennsarti.github.io/blog/getting-started-with-windows-containers/> <https://docs.microsoft.com/en-us/virtualization/windowscontainers/manage-containers/container-networking>

NEW QUESTION 383

Note: This question is part of a series of questions that use the same scenario. For your convenience, the scenario is repeated in each question. Each question presents a different goal and answer choices, but the text of the scenario is exactly the same in each question in this series.

A company named Contoso, Ltd. has several servers that run Windows Server 2016. Contoso has a Hyper-V environment that uses failover clustering and Windows Server Update Services (WSUS). The environment contains several Windows containers and several virtual machines.

The WSUS deployment contains one upstream server that is located on the company's perimeter network and several downstream servers located on the internal network. A firewall separates the upstream server from the downstream servers.

You plan to deploy a human resources application to a new server named HRServer5. HRServer5 contains a FAT32-formatted data volume.

The CIO of Contoso identifies the following requirements for the company's IT department:

Which two actions should you perform to meet the encryption requirement for WSUS? Each correct answer presents part of the solution.

- A. Require SSL on the Inventory virtual directory.
- B. Require SSL on the ClientWebService virtual directory.
- C. Create a firewall rule to allow TCP port 443.
- D. Create a firewall rule to allow TCP port 8531.

Answer: BC

Explanation:

References:

<https://technet.microsoft.com/en-us/library/bb633246.aspx> https://en.wikipedia.org/wiki/List_of_TCP_and_UDP_port_numbers

NEW QUESTION 388

You have a server named Server1 that runs Windows Server 2016 You install the Docker daemon on

Server1 You need to configure the Docker daemon to accept connections only on TCP port 64500. What should you do?

- A. Run theNew-NetFirewallRulecmdlet
- B. Run theSet-ServiceWindows PowerShell cmdlet.
- C. Run the sc config command.
- D. Run the sc control command.

Answer: C

NEW QUESTION 390

Note: This question is part of a series of questions that present the same scenario. Each question in the series contains a unique solution that might meet the stated goals. Some question sets might have more than one correct solution, while others might not have a correct solution.

After you answer a question in this section, you will NOT be able to return to it. As a result, these questions will not appear in the review screen.
 You network contains an Active Directory forest named contoso.com. The forest contains a child domain named eu.contoso.com.

You plan to implement live migration between two Hyper-V hosts that run Windows Server 2016. The hosts are configured as shown in the following table.

Host name	Configuration
Host1	<ul style="list-style-type: none"> Is a member of the contoso.com domain Uses an Intel Xeon processor released in 2012 Has an external virtual switch named Switch1 Hosts a virtual machine named VM1 that connects to Switch1
Host2	<ul style="list-style-type: none"> Is a member of the eu.contoso.com domain Uses an Intel Xeon processor released in 2016 Has an external virtual switch named Switch1

You need to ensure that you can perform a live migration of VM1 from Host1 to Host2.

Solution: You replace the processor in Host1 with a processor that is identical to the processor in Host2.

Does meet the goal?

- A. Yes
 B. No

Answer: B

NEW QUESTION 395

HOTSPOT

You have a Hyper-V host named Server1 that runs Windows Server 2016 datacenter. Server1 is activated.

On Server1, you deploy a virtual machine named VM1 that has a Server Core installation of Windows Server 2016 Standard.

You need to activate VM1 by using Automatic Virtual Machine Activation (AVMA).

Which command should you run? To answer, select the appropriate options in the answer area. NOTE: Each correct selection is worth one point.

Answer Area

reg.exe
regsvr32.exe
setup.exe
Set-VM
Set-WindowsProductKey
slmgr.vbs

/ipk
/pkey
/rearm
/unattend:PID=
-ProductKey

C3RCX-M6NRP-6CXC9-TW2F2-4RHYD

- A. Mastered
 B. Not Mastered

Answer: A

Explanation:

References: <https://blogs.technet.microsoft.com/askcore/2013/11/13/activating-virtual-machines-via-automatic-virtual-machine-activation-in-windows-server-2012-r2/>

NEW QUESTION 399

You have a server named Server1 that runs Windows Server 2016.

The server has an application named App1. App1 writes entries to the Application event log when errors are encountered. The events have IDs of either 111 or 112.

You need to restart the service whenever either of these events is logged. What should you do?

- A. From Windows PowerShell, run the Get-SMSEvent cmdlet and pipe the output to the Start-NetEventSession cmdlet.
 B. From Event Viewer, create a subscription that has a filter for the event IDs.
 C. From Event Viewer, use the Create Basic Task Wizard for each event ID.
 D. From Windows PowerShell, run the Get-Event cmdlet and pipe the output to the Start-NetEventSession cmdlet.

Answer: C

NEW QUESTION 403

You have a server named Server1 that runs Windows Server 2016.
 You need to install the DNS Server role on Server1. What should you run?

- A. the Install-Package cmdlet
- B. the Add-WindowsPackage cmdlet
- C. the Add-WindowsFeature cmdlet
- D. the setup.exe command

Answer: C

NEW QUESTION 408

You have a server named VM1. VM1 is a virtual machine on a Hyper-V host that runs Windows Server 2016. You need to create a checkpoint that includes the virtual machine memory state of VM1.
 What command should you run? To answer, select the appropriate options in the answer area.

<div style="text-align: right;">▼</div> Checkpoint-VM Get-VMSnapshot Set-VM	-Name VM1 -CheckpointType	<div style="text-align: right;">▼</div> Production ProductionOnly Standard
<div style="text-align: right;">▼</div> Checkpoint-VM Export-VMSnapshot Get-VHDSnapshot	-Name VM1 -SnapshotName Snapshot1	

- A. Mastered
- B. Not Mastered

Answer: A

Explanation:

References:

<https://docs.microsoft.com/en-us/virtualization/hyper-v-on-windows/user-guide/checkpoints>

NEW QUESTION 412

Your network contains an Active Directory domain named contoso.com. The domain contains two servers named Server1 and Server2 that run Windows Server 2016. Server1 and Server2 have multiple local disks attached.

You need to create a storage pool by using Storage Spaces Direct.

Which three actions should you perform in sequence? To answer, move the appropriate actions from the list of actions to the answer area and arrange them in the correct order.

Actions	Answer Area
From Server1, run the New-SpacesPool cmdlet.	
On Server1 and Server2, install the Failover Clustering feature.	
From Server1, run the New-StorageFileServer cmdlet.	
From Server1, run the New-Cluster cmdlet.	
On Server1 and Server2, install the Storage Replica feature.	
From Server1, run the Enable-ClusterStorageSpacesDirect cmdlet.	
On Server1 and Server2, install the File Server role service.	

- A. Mastered
- B. Not Mastered

Answer: A

Explanation:

References:

<https://docs.microsoft.com/en-us/windows-server/storage/storage-spaces/deploy-storage-spaces-direct>

NEW QUESTION 413

You have a server named Server1 that runs Windows Server 2016. Windows Defender is enabled on Server1. Server1 runs an application named App1 that stores various types of files in Microsoft OneDrive for Business, MicrosoftOneDrive, and Microsoft SharePoint Online. App1 also interacts with several local services. You need to prevent Windows Defender from scanning any files opened by App1. What should you do on Server1?

- A. Run the Set-ExecutionPolicy cmdlet.
- B. Run the New-AppLockerPolicy cmdlet.
- C. Modify the real-time protection settings in Windows Defender.
- D. Run the Add-MpPreference cmdlet.

Answer: D

Explanation:

References:

<https://docs.microsoft.com/en-us/windows/security/threat-protection/windows-defender-antivirus/configure-proc>

NEW QUESTION 414

.....

THANKS FOR TRYING THE DEMO OF OUR PRODUCT

Visit Our Site to Purchase the Full Set of Actual 70-740 Exam Questions With Answers.

We Also Provide Practice Exam Software That Simulates Real Exam Environment And Has Many Self-Assessment Features. Order the 70-740 Product From:

<https://www.2passeasy.com/dumps/70-740/>

Money Back Guarantee

70-740 Practice Exam Features:

- * 70-740 Questions and Answers Updated Frequently
- * 70-740 Practice Questions Verified by Expert Senior Certified Staff
- * 70-740 Most Realistic Questions that Guarantee you a Pass on Your FirstTry
- * 70-740 Practice Test Questions in Multiple Choice Formats and Updatesfor 1 Year