

Cisco

Exam Questions 300-460

Implementing and Troubleshooting the Cisco Cloud Infrastructure (CLDINF)



NEW QUESTION 1

Which option lists the number of segments that are supported by VxLAN as standardized in RFC7348 and the number of bytes of overhead that are added to the original frame?

- A. 1 million; 50
- B. 16 million; 50
- C. 1 million; 48
- D. 16 million; 48

Answer: B

Explanation:

Reference: <https://tools.ietf.org/html/rfc7348>

NEW QUESTION 2

A virtualization engineer is preparing to install a hypervisor to a Cisco UCS B-series Server. How must the mgmt NIC be selected so that initial network connectivity can be established to the host?

- A. Match the ESXi mgmt NIC to the virtual MAC address of the Cisco UCS fabric interconnect.
- B. Match the ESXi mgmt NIC to the Cisco UCS vNIC carrying the mgmt VLAN.
- C. Assign the mgmt NIC to the first port on the bus.
- D. Assign the mgmt NIC to the last port on the bus.

Answer: B

NEW QUESTION 3

Which two statements about Fibre Channel zoning in Cisco UCS are true? (Choose two.)

- A. Zoning is configured on a per-VSAN basis.
- B. Cisco UCS does not support zoning.
- C. Zoning is configured on a per fabric basis.
- D. Zoning can be enabled at the fabric level in switch mode.
- E. You cannot enable zoning at the fabric interconnect level.

Answer: CD

NEW QUESTION 4

An engineer needs to install a hypervisor on a Cisco UCS B-Series Blade Server. The operating system must remain local to the server and must be resilient. Which two hardware components are required to accomplish this? (Choose two.)

- A. onboard flash memory
- B. SD card
- C. external USB
- D. internal USB
- E. Local disk

Answer: AE

NEW QUESTION 5

Which two statements about the Cisco UCS Virtual Media Boot Policy are true? (Choose two.)

- A. UEFI Boot Mode specifies primary-level boot devices and enables secure boot option.
- B. A virtual media device mimics the insertion of a physical CD/DVD disk (read-only) or floppy disk (read-write) into a server.
- C. Secure boot option is enabled by default when creating a boot policy.
- D. Boot policies can be created under Physical > Storage in Cisco UCS Director.
- E. A boot policy can be configured to boot one or more servers from a virtual media device.

Answer: BE

Explanation:

Reference: https://www.cisco.com/c/en/us/td/docs/unified_computing/ucs/ucs-central/cli-reference-manual/1-5/b_CiscoUCSCentral-CLI-Reference-Manual-Release1-5/b_CiscoUCSCentral-CLI-Reference-Manual-Release1-5_chapter_010110.html#concept_9451D9565D534BAEA521E6454896B580

NEW QUESTION 6

A Cisco UCSM administrator is tasked with modifying the boot order in a service profile. Which option lists the steps required to accomplish this task?

- A. In the Navigation pane, click the Servers tab.On the Servers tab, expand Servers > Service Profiles.Click the service profile for which you want to change boot orde
- B. Click Boot Order Wizard to change the existing boot policy.
- C. In the Navigation pane, click the Servers tab.On the Servers tab, expand Servers > Service Profiles.Click the service profile for which you want to change boot orde
- D. Click Boot Security.Click Modify Boot Policy to change the existing policy.
- E. In the Navigation pane, click the Servers tab.On the Servers tab, expand Servers > Service Profiles.Click the service profile for which you want to change boot orde
- F. Click Modify Boot Policy to change the existing boot policy.
- G. In the Navigation pane, click the Servers tab.On the Servers tab, expand Servers > Service Profiles.Click the service profile for which you want to change boot

orde
H. Click Boot Order and the Modify Boot Policy wizard display
I. Change the existing boot policy.

Answer: D

NEW QUESTION 7

A Cisco UCS Director administrator is changing the boot order in a boot policy. Which option lists the steps that accomplish this task?

- A. On the menu bar, choose Physical > Storage. In the left pane, expand the pod and then click the Cisco UCS Manager account
- B. In the right pane, click the Organizations tab. Click the organization in which you want to modify a policy and then click View Detail
- C. Click the Manage Boot Order tab. Choose the boot policy that you want to clone and click Manage Boot Order.
- D. On the menu bar, choose Physical > Compute. In the left pane, expand the pod and then click the Cisco UCS Manager account
- E. In the right pane, click the Organizations tab. Click the organization in which you want to modify a policy and then click View Detail
- F. Click the Boot Policies tab. Choose the boot policy that you want to clone and click Manage Boot Devices Order.
- G. On the menu bar, choose Physical > Storage. In the left pane, expand the pod and then click the Cisco UCS Manager account
- H. In the right pane, click the Organizations tab. Click the organization in which you want to modify a policy and then click View Detail
- I. Click the Boot Policies tab. Choose the boot policy that you want to clone and click Manage Boot Devices Order.
- J. On the menu bar, choose Physical > Compute. In the left pane, expand the pod and then click the Cisco UCS Manager account
- K. In the right pane, click the Organizations tab. Click the organization in which you want to modify a policy and then click View Detail
- L. Click the Manage Boot Order tab. Choose the boot policy that you want to clone and click Manage Boot Order.

Answer: A

NEW QUESTION 8

A Cisco UCS Director administrator is configuring vHBA. Which four fields are needed to configure vHBA? (Choose four.)

- A. vHBA Name
- B. Adapter Policy
- C. Template Type
- D. Organizations
- E. Description
- F. Fabric ID
- G. UCS Organization Name
- H. UCS Account Name

Answer: ACEF

Explanation:

Reference: http://www.cisco.com/c/en/us/td/docs/unified_computing/ucs/ucs-director/ucs-mgmt-guide/4-0/b_Cisco_UCS_Director_UCS_Management_Guide_40/b_Cisco_UCS_Director_UCS_Management_Guide_40_chapter_0101.html#concept_930C11B6473846DDA5F7F25E88EC8_F33

NEW QUESTION 9

Which three options describe the correct methods to install the Cisco Nexus 1000V VEM (VIB) software module on the VMware ESXi hypervisor? (Choose three.)

- A. using the "Add Host to vSphere Distributed Switch" dialog on the vSphere Network tab when UpdateManager is installed
- B. esxcli software vib install -n/tmp/Cisco_bootbank_cisco-vem -v173-esx_5.2.1.3.1.4.0- 3.2.1.vib
- C. executing the Deploy-Nexus 1000V-VSEM.ps1 script
- D. esxcli software vib install -v/tmp/Cisco_bootbank_cisco-vem -v173-esx_5.2.1.3.1.4.0- 3.2.1.vib
- E. using the Host Selection dialog box in Cisco Virtual Switch Update Manager
- F. creating a baseline group in VMware Update Manager

Answer: ADE

Explanation:

Reference: http://www.cisco.com/c/en/us/td/docs/switches/datacenter/nexus1000/sw/5_2_1_s_v_3_1_4/install/guide/b_Cisco_N1KV_VMware_Install_and_Upgrade_Guide_521SV314/b_Cisco_N1KV_VMware_Install_and_Upgrade_Guide_521SV314a_chapter_01.html#task_F02BD7_7701B345D9B34A9332AA7C179F

NEW QUESTION 10

An engineer must ensure that all VXLAN and VTEP processes are kept on purpose-built hardware to ensure that all overlay functions are as fast as possible. In which solution is all VXLAN and VTEP decision making moved to the hardware, versus potentially slower software control?

- A. Layer 3
- B. ACI
- C. NSX
- D. Layer 2

Answer: A

NEW QUESTION 10

Which three statements about server pools are true? (Choose three.)

- A. Cisco USC Director Displays only the managed servers in a server pool, but the size of the pool includes all servers.
- B. Servers pools cannot be assigned to a Cisco USC Director group.
- C. A given server can belong only to a specific server pool.
- D. A server pool contains a set of servers that share the same attributes such as server type, amount of memory, local storage, type of CPU, or local drive

configuration.

E. A server pool only includes servers from a specific chassis in the system.

F. If your system implements multitenancy through organizations, you can designate one or more server pools to be used by a specific organization.

Answer: ADF

Explanation:

Reference: http://www.cisco.com/c/en/us/td/docs/unified_computing/ucs/ucs-director/ucs-mgmt-guide/4-0/b_Cisco_UCS_Director_UCS_Management_Guide_40/b_Cisco_UCS_Director_UCS_Management_Guide_40_chapter_0110.html

NEW QUESTION 15

A Cisco UCS Director administrator is installing a Bare Metal Agent and is in the process of adding an NFS mount point. Which Administration menu option does the administrator choose to add an NFS mount point?

- A. Compute Accounts
- B. Storage Accounts
- C. Physical Accounts
- D. Bare Metal Accounts

Answer: C

NEW QUESTION 17

A Cisco UCSM administrator has been tasked with deploying a new data center. Which two recommendations aid in the ability to associate a service with a server? (Choose two.)

- A. The host control setting for a QoS policy applies to vNICs only.
- B. It has no effect on a vHBA.
- C. You can assign only a QoS policy to a vHBA if the priority setting for that policy is set to fc, which represents the Fibre Channel system class.
- D. The host control setting for a QoS policy applies to vHBAs only.
- E. Power capping is supported for rack server.
- F. If you include a power control policy in a service profile that is associated with a rack-mount server, the policy is implemented.

Answer: BD

NEW QUESTION 19

A Cisco UCS Director administrator is attempting to resolve a workflow validation issue. Which option lists the steps that accomplish this task?

- A. On the menu bar, choose Policies > Catalog
- B. Click the Activities tab. Choose the workflow that failed validation.
- C. Click Validate Workflow. In the Workflow Validation dialog box, double click the description under Resolution. In the Validation Errors dialog box, view the summary for the issue detected and complete the wizard to resolve the validation error.
- D. On the menu bar, choose Policies > Orchestration
- E. Click the Activities tab. Choose the workflow that failed validation.
- F. Click Validate Workflow. In the Workflow Validation dialog box, double click the description under Resolution. In the Validation Errors dialog box, view the summary for the issue detected and complete the wizard to resolve the validation error.
- G. On the menu bar, choose Policies > Orchestration
- H. Click the Workflows tab. Choose the workflow that failed validation.
- I. Click Validate Workflow. In the Workflow Validation dialog box, double click the description under Resolution. In the Validation Errors dialog box, view the summary for the issue detected and complete the wizard to resolve the validation error.
- J. On the menu bar, choose Policies > Catalog
- K. Click the Workflows tab. Choose the workflow that failed validation.
- L. Click Validate Workflow. In the Workflow Validation dialog box, double click the description under Resolution. In the Validation Errors dialog box, view the summary for the issue detected and complete the wizard to resolve the validation error.

Answer: C

NEW QUESTION 21

A Cisco UCS Director administrator is creating a VSAN. Which two types of VSANs are available? (Choose two.)

- A. storage cloud
- B. storage hybrid
- C. SAN cloud
- D. SAN

Answer: CD

NEW QUESTION 22

An engineer has two Windows hosts and a Fibre Channel storage array that are connected to a Cisco MDS 9148 Multilayer Fabric Switch. The engineer needs to add a new ESXi host to the Fibre Channel storage array.

The engineer creates a new zone and zoneset with the ESXi host pWWN and the storage pWWN and then activates the new zoneset. All the Windows hosts immediately lose storage access.

Which option describes the most likely cause of the problem?

- A. A zoning conflict occurred which disconnected the Windows hosts from the storage.
- B. The new zoneset deactivated the existing zoneset.
- C. The existing zoneset was deleted when the new zoneset was activated.
- D. The storage array does not support different operating system hosts.

Answer: A

NEW QUESTION 24

An engineer is configuring two new Cisco UCS domains that are connected to the same network and SAN infrastructure. What must the engineer do to configure MAC pools and WWPN pools?

- A. Configure UCS 1 pool addresses and extend the pools to UCS 2.
- B. Configure different pool addresses for each Cisco UCS domain.
- C. Configure shared pool addresses for each Cisco UCS domain.
- D. Configure the same pool addresses for each Cisco UCS domain.

Answer: C

NEW QUESTION 27

An engineer wants to verify the VXLAN configuration on a Cisco Nexus 1000V Series Switch. Which NX-OS command provides the following partial output?
 Segment ID: 5000 (manual/Active) Group IP: 239.1.1.1
 NR – 1 seg_bd

- A. show port-profile usage
- B. show interface switchport
- C. show bridge-domain
- D. show feature | begin Segment

Answer: C

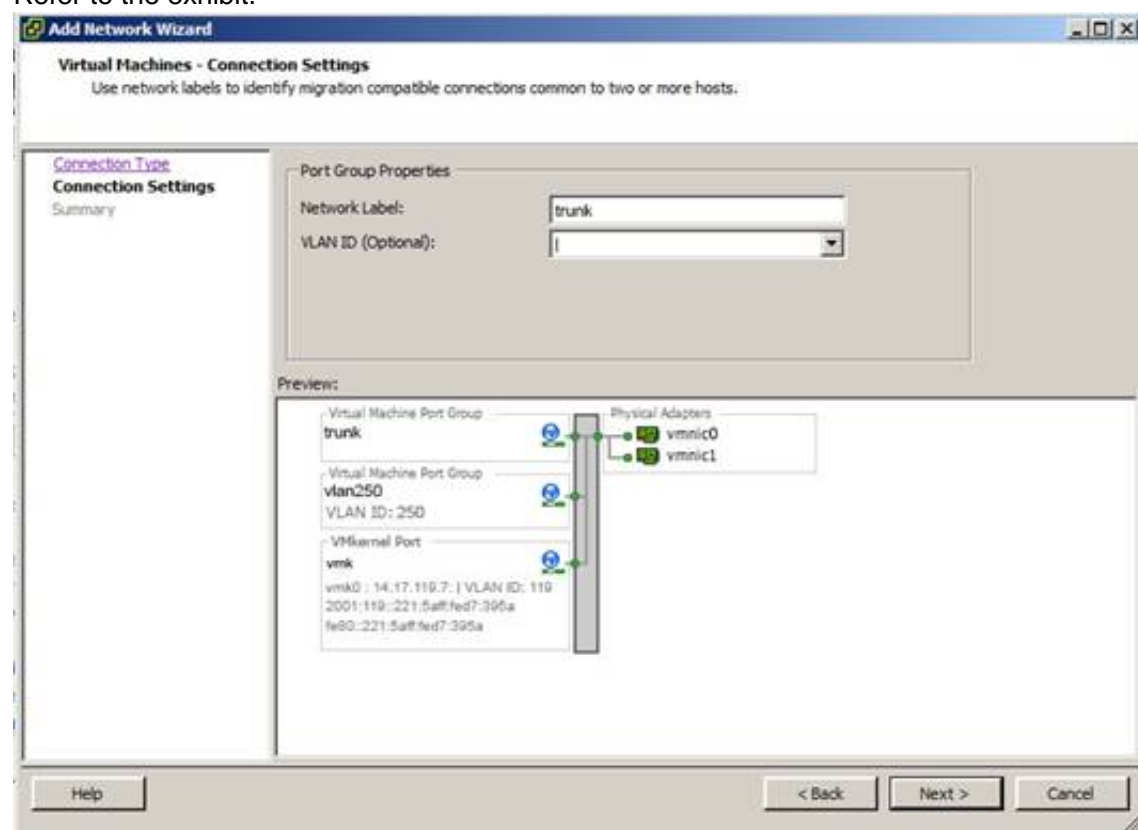
Explanation:

Reference:

https://www.cisco.com/c/en/us/td/docs/switches/datacenter/nexus1000/sw/4_2_1_s_v_1_5_1/vxlan/configuration/guide/n1000v_vxlan/n1000v_vxlan_basic.html

NEW QUESTION 30

Refer to the exhibit.



You have been asked to create a trunking (802.1 q) port group on a VMware vSwitch. Which number must be assigned as the VLAN ID to trunk all VLANs?

- A. 4095
- B. 1
- C. 1-4095

Answer: C

NEW QUESTION 35

In Cisco UCSM, which two options describe the purpose of a service profile template? (Choose two.)

- A. With a service profile template, you can quickly create several service profiles with the same basic parameters, such as the number of vNICs and vHBAs, and with identify information drawn from the same pools.
- B. A service profile template parameterizes the UUIDs that differentiate one instance of an otherwise identical server from another.
- C. Templates can be categorized into two types: initial and updating.
- D. When using an initial service profile template, changes to the initial template automatically propagate to the bound service profiles.
- E. Service profiles created from an updating service profile template do not inherit all the properties of the template and remain connected to the template.
- F. Any changes to the template must be propagated manually to the service profiles that are created from the template.

Answer: AB

NEW QUESTION 38

Which mechanism is used to find latent failure in memory modules?

- A. sniffing
- B. swapping
- C. paging
- D. scrubbing

Answer: D

Explanation:

Reference: <http://www.cisco.com/c/dam/en/us/products/collateral/servers-unified-computing/ucs-manager/whitepaper-c11-736116.pdf>

NEW QUESTION 43

An engineer needs to ensure that Windows virtual machines can be automatically provisioned from a template with a customized IP address and hostname. Which two components can enable this at the operating system level? (Choose two.)

- A. IP address management system
- B. DNS server
- C. configuration management agents
- D. System Preparation tool
- E. DHCP server

Answer: AB

NEW QUESTION 44

An engineer has configured a VXLAN tunnel between remote data centers, but the VXLAN tunnel is not established. Which reason for this tunnel failure is most likely true?

- A. The transport network does not support Bidirectional PIM.
- B. Multiprotocol BGP is missing a route reflector.
- C. Multipoint GRE tunnels are not configured between data centers.
- D. An ACL exists on the physical network between the data centers that block UDP port 4789.

Answer: B

NEW QUESTION 49

Cisco USB Director provides many tools to help diagnose and resolve common problems. Which option describes the purpose of the system information tool?

- A. to view basic and advanced system information, including the license status, database tables version, recourse usage, logs, and debugging processes for troubleshooting
- B. to view product support information
- C. to execute JavaScript functions and to define variables and functions, when using cloupia scripts
- D. to troubleshoot problems related to various administrative tasks such as connectivity, configuration, and status

Answer: A

Explanation:

Reference: Basic system information includes the version, uptimes, service status, system license status, usage, compute accounts status, compute server status, storage account status, system catalogs, network device status, and cloud status.

The advanced system information includes basic system information, and database tables summary, product configuration, top process information, and information on processors, memory, disks, log files, network, and login. You can also view the system task status, cloud inventory, and monitoring status.

NEW QUESTION 51

Which three operations can a cloud administrator perform when using the vSphere Client configuration tab? (Choose three.)

- A. View the processor and memory configuration of the ESX host
- B. Configure the host as NTP client
- C. Configure datastore backups
- D. Configure zoning
- E. View target initiators and zones
- F. Configure the primary/secondary DNS server
- G. configure masking

Answer: ABF

NEW QUESTION 53

Which two fields are needed for a Cisco UCS Director administrator to configure a WWN block? (Choose two.)

- A. the first WWNN or WWPN address in the block
- B. the WWN for the initiator
- C. a unique name for the initiator
- D. a unique name for the block
- E. the number of WWN or WWPN addresses in the block

Answer: AE

NEW QUESTION 55

An engineer is deploying a new SQL cluster and is configuring the storage for peak performance (IOPS). Which RAID type supports this configuration?

- A. RAID 0
- B. RAID 6
- C. RAID 10
- D. RAID 1
- E. RAID 5

Answer: B

NEW QUESTION 60

With which three types of zoning can a Cisco UCS domain be configured? (Choose three.)

- A. cloud-based Fibre Channel zoning
- B. Cisco UCS local Fibre Channel zoning
- C. hybrid-based Fibre Channel zoning
- D. switch-based Fibre Channel zoning
- E. no zoning
- F. vBlock-based Fibre Channel zoning

Answer: BDE

Explanation:

Reference: http://www.cisco.com/c/en/us/td/docs/unified_computing/ucs/sw/gui/config/guide/2-2/b_UCSM_GUI_Configuration_Guide_2_2/b_UCSM_GUI_Configuration_Guide_2_2_chapter_011011.pdf

NEW QUESTION 61

An administrator is troubleshooting basic connectivity between two Fibre Channel points that include node hops and latency data. Which tool is the best for troubleshooting this scenario?

- A. ping
- B. fctraceroute
- C. traceroute
- D. fcping

Answer: B

Explanation:

Reference: Ping and traceroute are two of the most useful tools for troubleshooting TCP/IP networking problems. The ping utility generates a series of echopackets to a destination across a TCP/IP internetwork.

When the echo packets arrive at the destination, they are rerouted and sent back to the source. Using ping, you can verify connectivity and latency to a particular destination across an IP routed network.

The traceroute utility operates in a similar fashion, but can also determine the specific path that a frame takes to its destination on a hop-by-hop basis.

NEW QUESTION 62

Which is the step to associate an application profile EPG to a VMM domain?

- A. The APIC pushes the EPGs as virtual switches to the VM controller.
- B. The VMM administrator creates the port groups in the Tenant window then assigns the EPGs to CPPAs.
- C. The APIC pushes the EPGs as port groups in the VM controller.
- D. The policy administrator assigns the EPG to physical endpoints in the VMM.

Answer: C

Explanation:

Reference: Provisioning of EPGs in VMM Domain—Associates application profile EPGs to VMM domains as follows:

The APIC pushes these EPGs as port groups in the VM controller. The compute administrator then places vNICs into these port groups.

An EPG can span multiple VMM domains, and a VMM domain can contain multiple EPGs.

NEW QUESTION 63

During which process are Cisco UCS UUID, MAC, and WWPN identifiers allocated from the pool?

- A. service profile instantiation
- B. server boot time
- C. service profile assignment to a server
- D. service profile template creation

Answer: C

NEW QUESTION 64

Which option lists the default methods that are needed to access a Cisco UCS C-Series via its Lights-Out Management? (Choose two.)

- A. HTTPS
- B. FTP
- C. Telnet
- D. SSH

Answer:

AD

NEW QUESTION 67

A cloud engineer is implementing a new cloud infrastructure with the following equipment: One Cisco UCS 5108 AC2 B-Series Chassis
Two Cisco Nexus 5000 Series Switches Two Cisco UCS 6248 Fabric Interconnects One Cisco UCS 2208XP Fabric Extender Eight Cisco B200 M4 half-width blades
Which option describes the most likely problem with this deployment?

- A. The half-width blades are not compatible with the chassis.
- B. One additional fabric interconnect is needed, because the chassis can handle only six half-width blades.
- C. Two additional fabric interconnects are needed to handle all four blade servers.
- D. An additional fabric extender is needed.

Answer: D

NEW QUESTION 71

A Cisco UCS Director administrator is charging the boot . Which option lists the steps that accomplish this task?

- A. On the menu bar, choose Physical > Storage.In the left pane, expand the pod and then click the Cisco UCS Manager account In the right pane, click the Organizations tabClick the organization in which you want to modify a policy and then click View details Click the Manage Boot Order tab.Choose the boot policy that you want to clone and click Manage Boot Order
- B. On the menu bar, choose Physical > Compute.In the left pane, expand the pod and then click the Cisco UCS Manager account In the right pane, click the Organizations tabClick the organization in which you want to modify a policy and then click View detailsClick the Manage Boot Order tab.Choose the boot policy that you want to clone and click Manage Boot Order
- C. On the menu bar, choose Physical > Storage.In the left pane, expand the pod and then click the Cisco UCS Manager account In the right pane, click the Organizations tabClick the organization in which you want to modify a policy and then click View details Click the Boot Policies tab.Choose the boot policy that you want to clone and click Manage Boot Devices Order
- D. On the menu bar, choose Physical > Compute.In the left pane, expand the pod and then click the Cisco UCS Manager account In the right pane, click the Organizations tabClick the organization in which you want to modify a policy and then click View details Click the Boot Policies tab.Choose the boot policy that you want to clone and click Manage Boot Devices Order

Answer: D

Explanation:

Reference: http://www.cisco.com/c/en/us/td/docs/unified_computing/ucs/ucs-director/ucs-central-mgmtguide/4-1/b_Cisco_UCS_Director_UCSCentral_Mgmt_Guide_41/b_Cisco_UCS_Director_UCSCentral_Mgmt_Guide_41_chapter_0111.html#concept_2313A9F59CD94237819D14A3CA608D FD

NEW QUESTION 74

Which two pieces of information are needed when adding an NFS mount point in Cisco UCS Director? (Choose two.)

- A. the IP address of the NFS server where you plan to store the OS images for Bare Metal Agent to use
- B. the locate and organization where the NFS server is located
- C. the IP address of the IP share storage system
- D. the location of the NFS server where the OS images are stored
- E. the IP address of the main UCS server

Answer: AD

Explanation:

Reference: http://www.cisco.com/c/en/us/td/docs/unified_computing/ucs/ucs-director/bma-install-config/5-2/b_ucsd_bma_install_config_guide_5_2/b_ucsd_bma_install_config_guide_5_2_chapter_0110.html#task_FB4A6403CF4F4650B31A8C2C6FF4E69F

NEW QUESTION 79

An engineer is configuring a vNIC template. Under which circumstance do they want to disable vNIC fabric failover?

- A. The Cisco UCS domain is running in Ethernet switch mode.
- B. A named VLAN already exists.
- C. The VLAN pin group has been created.
- D. The statistics threshold policy has already been set.

Answer: A

Explanation:

Reference: https://www.cisco.com/c/en/us/td/docs/unified_computing/ucs/sw/gui/config/guide/2-0/b_UCSM_GUI_Configuration_Guide_2_0/b_UCSM_GUI_Configuration_Guide_2_0_chapter_010100.html

NEW QUESTION 81

An engineer needs to make changes to a service profile that is bound to a service profile template. The service profile is associated to a production server that is online. Which statement describes what occurs when the engineer clicks the “unbind” option?

- A. The service profile unbinds from the template, and the server shuts down automatically.
- B. Cisco UCS Manager requests the server to shut down so that the service profile can unbind.
- C. Cisco UCS Manager requests the service profile to be disassociated from the server so that the service profile can unbind.
- D. The service profile unbinds from the template, and the server remains online.

Answer: D

Explanation:

Reference: <https://supportforums.cisco.com/t5/unified-computing-system/disassociate-service-profile-fromserver/td-p/2785270>

NEW QUESTION 84

In which topology should Cisco UCS vNIC Fabric Failover be enabled?

- A. on every vNIC on every service profile
- B. only on vNICs assigned to hypervisors
- C. only on vNICs assigned to bare metal operating systems
- D. only on vNICs when an operating system level teaming driver is unavailable

Answer: D

NEW QUESTION 89

An architect must use legacy Cisco NX-OS 7000 and 2000 Series Switches in a data center to implement VXLAN and VTEP on a VMware ESXi infrastructure. Which solution allows using VXLAN with VTEP without upgrading legacy routing and switching infrastructure?

- A. VMware NSX
- B. OpenStack Neutron
- C. Cisco ACI
- D. Microsoft Hyper-V

Answer: A

NEW QUESTION 91

What does the Auto Deploy function of an ESXi host rely on?

- A. DNS
- B. PXE
- C. DHCP
- D. SCP

Answer: B

Explanation:

Reference: <http://blogs.vmware.com/vsphere/2013/03/auto-deploy-stateless-caching-stateless-caching-andnetwork-isolated-hosts.html>

NEW QUESTION 92

.....

Thank You for Trying Our Product

We offer two products:

1st - We have Practice Tests Software with Actual Exam Questions

2nd - Questions and Answers in PDF Format

300-460 Practice Exam Features:

- * 300-460 Questions and Answers Updated Frequently
- * 300-460 Practice Questions Verified by Expert Senior Certified Staff
- * 300-460 Most Realistic Questions that Guarantee you a Pass on Your First Try
- * 300-460 Practice Test Questions in Multiple Choice Formats and Updates for 1 Year

100% Actual & Verified — Instant Download, Please Click
[Order The 300-460 Practice Test Here](#)