

350-901 Dumps

Developing Applications using Cisco Core Platforms & APIs

<https://www.certleader.com/350-901-dumps.html>



NEW QUESTION 1

A developer has created an application based on customer requirements. The customer needs to run the application with the minimum downtime. Which design approach regarding high-availability applications, Recovery Time Objective, and Recovery Point Objective must be taken?

- A. Active/passive results in lower RTO and RP
- B. For RPO, data synchronization between the two data centers must be timely to allow seamless request flow.
- C. Active/passive results in lower RTO and RP
- D. For RPO, data synchronization between the two data centers does not need to be timely to allow seamless request flow.
- E. Active/active results in lower RTO and RP
- F. For RPO, data synchronization between the two data centers does not need to be timely to allow seamless request flow.
- G. Active/active results in lower RTO and RP
- H. For RPO, data synchronization between the two data centers must be timely to allow seamless request flow.

Answer: A

NEW QUESTION 2

A cloud native project is being worked on in which all source code and dependencies are written in Python, Ruby, and/or JavaScript. A change in code triggers a notification to the CI/CD tool to run the CI/CD pipeline. Which step should be omitted from the pipeline?

- A. Deploy the code to one or more environments, such as staging and/or production.
- B. Build one of more containers that package up code and all its dependencies.
- C. Compile code.
- D. Run automated tests to validate the correctness.

Answer: A

NEW QUESTION 3

Which two statements are considered best practices according to the 12-factor app methodology for application design? (Choose two.)

- A. Application code writes its event stream to stdout.
- B. Application log streams are archived in multiple replicated databases.
- C. Application log streams are sent to log indexing and analysis systems.
- D. Application code writes its event stream to specific log files.
- E. Log files are aggregated into a single file on individual nodes.

Answer: AD

NEW QUESTION 4

An organization manages a large cloud-deployed application that employs a microservices architecture. No notable issues occur with downtime because the services of this application are redundantly deployed over three or more data center regions. However, several times a week reports are received about application slowness. The container orchestration logs show faults in a variety of containers that cause them to fail and then spin up brand new. Which action must be taken to improve the resiliency design of the application while maintaining current scale?

- A. Update the base image of the containers.
- B. Test the execution of the application with another cloud services platform.
- C. Increase the number of containers running per service.
- D. Add consistent “try/catch(exception)” clauses to the code.

Answer: D

NEW QUESTION 5

Which two statements about a stateless application are true? (Choose two.)

- A. Different requests can be processed by different servers.
- B. Requests are based only on information relayed with each request.
- C. Information about earlier requests must be kept and must be accessible.
- D. The same server must be used to process all requests that are linked to the same state.
- E. No state information can be shared across servers.

Answer: AB

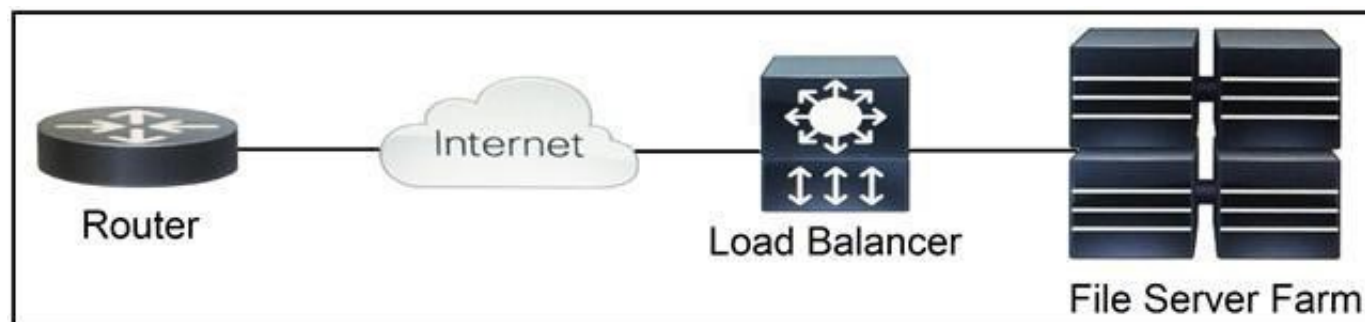
NEW QUESTION 6

Which statement about microservices architecture is true?

- A. Applications are written in a single unit.
- B. It is a complex application composed of multiple independent parts.
- C. It is often a challenge to scale individual parts.
- D. A single faulty service can bring the whole application down.

Answer: B

NEW QUESTION 7



Refer to the exhibit. Which two functions are performed by the load balancer when it handles traffic originating from the Internet destined to an application hosted on the file server farm? (Choose two.)

- A. Terminate the TLS over the UDP connection from the router and originate an HTTPS connection to the selected server.
- B. Terminate the TLS over the UDP connection from the router and originate an HTTP connection to the selected server.
- C. Terminate the TLS over the TCP connection from the router and originate an HTTP connection to the selected server.
- D. Terminate the TLS over the TCP connection from the router and originate an HTTPS connection to the selected server.
- E. Terminate the TLS over the SCTP connection from the router and originate an HTTPS connection to the selected server.

Answer: DE

NEW QUESTION 8

A developer has completed the implementation of a REST API, but when it is executed, it returns a 401 error message. What must be done on the API to resolve the issue?

- A. Access permission to the resource must be granted, before the request.
- B. Configure new valid credentials.
- C. The requested API endpoint does not exist, and the request URL must be changed.
- D. Additional permission must be granted before the request can submitted.

Answer: D

NEW QUESTION 9

Paginating the Results

By adding the `page-size` operator to the query URI you can divide the query results into groups (pages) of objects using the following syntax. The operand specifies the number of objects in each group.

`page-size = number-of-objects-per-page`

By adding the `page` operator in the query URI, you can specify a single group to be returned using the following syntax. The pages start from number 0.

`page = page-number`

This example shows you how to specify 15 fault instances per page in descending order, returning only the first page:

Refer to the exhibit. Many faults have occurred in the ACI environment and a sample of them needs to be examined. Which API call retrieves faults 30 through 45?

- A. GET `https://apic-ip-address/api/class/faultInfo.json?order-by=faultinst.severity|desc&page=1&page-size=15`
- B. GET `https://apic-ip-address/api/class/faultInfo.json?order-by=faultinst.severity|desc&page=2&page-size=15`
- C. GET `https://apic-ip-address/api/class/faultInfo.json?order-by=faultinst.severity|desc&page=30`
- D. GET `https://apic-ip-address/api/class/faultInfo.json?order-by=faultinst.severity|desc&page=2&page-size=30`

Answer: D

NEW QUESTION 10

Refer to the exhibit. The cURL POST request creates an OAuth access token for authentication with FDM API requests. What is the purpose of the file “@token_data” that cURL is handling?

- A. This file is a container to log possible error responses in the request.
- B. This file is given as input to store the access token received from FDM.
- C. This file is used to send authentication related headers.
- D. This file contains raw data that is needed for token authentication.

Answer: B

NEW QUESTION 10

\$filter { string }

query

Filter criteria for documents to return. A URI with a \$filter System Query Option identifies a subset of the Entries from the Collection of Entries identified by the Resource Path section of the URI. The subset is determined by selecting only the Entries that satisfy the predicate expression specified by the query option. The expression language that is used in \$filter operators supports references to properties and literals. The literal values can be strings enclosed in single quotes, numbers and boolean values (true or false) or any of the additional literal representations shown in the Abstract Type System section. Query examples: \$filter=Name eq 'Bob' \$filter=Tags/any(t: t/Key eq 'Site') \$filter=Tags/any(t: t/Key eq 'Site' and t/Value eq "London")

```
GET /api/v1/compute/RackUnits?$filter=Tags/any (t:t/Key eq 'Site')
```

Refer to the exhibit. An Intersight API is being used to query RackUnit resources that have a tag keyword set to “Site”. What is the expected output of this command?

- A. list of all resources that have a tag with the keyword “Site”
- B. error message because the Value field was not specified
- C. error message because the tag filter should be lowercase
- D. list of all sites that contain RackUnit tagged compute resources

Answer: A

NEW QUESTION 12

A user is receiving a 429 Too Many Requests error. Which scheme is the server employing that causes this error?

- A. rate limiting
- B. time outs
- C. caching
- D. redirection

Answer: A

NEW QUESTION 15

```
import request
import json

meraki_api_key = "<api key>"
url =
"https://api.meraki.com/api/v0/organizations/12345567890/devices"
headers = {
    "X-Cisco-Meraki-API-Key": meraki_api_key,
}
params = {
    "perPage": 3
}
res = requests.get(url, headers=headers, params=params)
formatted_message = """
Meraki Dashboard API Response
-----
Response Status Code : {}
Response Link Header : {}
Response Body        : {}
-----
""".format(res.status_code, res.headers.get('Link'),
json.dumps(res.json(), indent=4))
print(formatted_message)
```

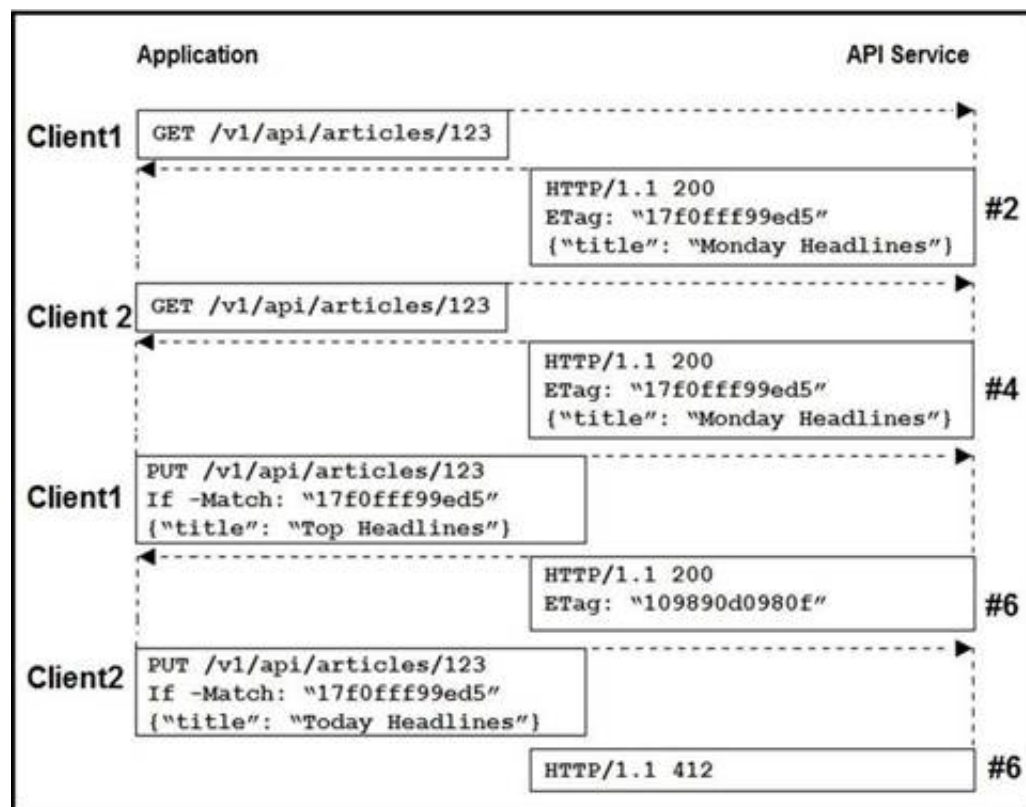
```
<https://n6.meraki.com/api/v0/organizations/1234567890/devices?perPage=
3&startingAfter=0000-0000-0000>; rel=first,
<https://n6.meraki.com/api/v0/organizations/1234567890/devices?perPage=
3&startingAfter=Q2EK-3UBE-RRUY>; rel=next,
<https://n6.meraki.com/api/v0/organizations/1234567890/devices?
endingBefore=zzzz-zzzz-zzzz&perPage=3>; rel=last
```

Refer to the exhibit. Which line of code must be added to this code snippet to allow an application to pull the next set of paginated items?

- A. requests.get(url, links=['next']['url'])
- B. requests.get(url, headers=links['next']['url'])
- C. requests.get(res.links['next']['url'], headers=headers)
- D. requests.get(res.headers.get('Link')['next']['url'], headers=headers)

Answer: C

NEW QUESTION 20



Refer to the exhibit. Two editors are concurrently updating an article's headline from their mobile devices. What results from this scenario based on this REST API sequence?

- A. The article is marked as "Conflicted"
- B. The article headline is "Monday Headlines"
- C. The article headline is "Today Headlines"
- D. The article headline is "Top Headlines"

Answer: B

NEW QUESTION 25

An application uses OAuth to get access to several API resources on behalf of an end user. What are two valid parameters to send to the authorization server as part of the first step of an authorization code grant flow? (Choose two.)

- A. URI to which the authorization server will send the user-agent back when access is granted or denied
- B. list of the API resources that the application is requesting to access
- C. secret that was generated by the authorization server when the application registered as an OAuth integration
- D. list of scopes that correspond to the API resources to which the application is requesting to access
- E. name of the application under which the application registered as an OAuth integration

Answer: AC

NEW QUESTION 29

Which snippet presents the correct API call to configure, secure, and enable an SSID using the Meraki API?

- A.

```
curl -X PUT \
  -url 'https://api.meraki.com/api/v0/networks/:networkId/ssids/2' \
  -H 'X-Cisco-Meraki-API-Key: 15da0c6ffff295f16267f88f98694cf29a86ed87' \
  -H 'Accept: application/json' \
  -H 'Content-type: application/json' \
  --data-raw '{
    "name": "My SSID",
    "enabled": false,
    "authMode": "psk",
    "encryptionMode": "wpa",
    "psk": "meraki123",
    "wpaEncryptionMode": "WPA1 and WPA2"
  }'
```
- B.

```
curl -X PUT \
  -url 'https://api.meraki.com/api/v0/networks/:networkId/ssids/2' \
  -H 'X-Cisco-Meraki-API-Key: 15da0c6ffff295f16267f88f98694cf29a86ed87' \
  -H 'Accept: application/json' \
  -H 'Content-type: application/json' \
  --data-raw '{
    "name": "My SSID",
    "enabled": true,
    "authMode": "psk",
    "encryptionMode": "wpa",
    "psk": "meraki123",
    "wpaEncryptionMode": "WPA1 and WPA2"
  }'
```

- C. `curl -X PUT \`
`--url 'https://api.meraki.com/api/v0/networks/:networkId/ssids/2' \`
`-H 'X-Cisco-Meraki-API-Key: 15da0c6ffff295f16267f88f98694cf29a86ed87' \`
`-H 'Accept: application/json' \`
`-H 'Content-type: application/json' \`
`--data-raw '{`
`"enabled": true,`
`"useVlanTagging": true`
`}`
- D. `curl -X PUT \`
`--url 'https://api.meraki.com/api/v0/networks/:networkId/ssids/2' \`
`-H 'X-Cisco-Meraki-API-Key: 15da0c6ffff295f16267f88f98694cf29a86ed87' \`
`-H 'Accept: application/json' \`
`-H 'Content-type: application/json' \`
`--data-raw '{`
`"name": "My SSID",`
`"enabled": true,`
`}`

Answer: B

NEW QUESTION 32

The UCS Python SDK includes modules for Service Profile template creation. Which two UCS Service Profile template types are supported? (Choose two.)

- A. initial-template
- B. updating-template
- C. abstract-template
- D. attached-template
- E. base-template

Answer: AB

NEW QUESTION 37

Click on the GET Resource button above to view resources that will help with this question.

An engineer is managing a DC with 6000 Cisco UCS servers installed and running. The engineer has been asked to identify all resources where the model is in the UCSB family and the available memory is less than or equal to 5 GB.

Which REST API call accomplishes this task?

- A. `GET/api/v1/compute/RackUnits?$select=Vendor,Model,Serial&$filter=not(Model eq 'UCSC') and AvailableMemory le 5000`
- B. `GET/api/v1/compute/RackUnits?$select=Vendor,Model,Serial&$filter=Model eq 'UCSB' and AvailableMemory lt 5000`
- C. `GET/api/v1/compute/RackUnits?$select=Vendor,Model,Serial&$filter=contains(Model, UCSB') and AvailableMemory lt 5000`
- D. `GET/api/v1/compute/RackUnits?$select=Vendor,Model,Serial&$filter=contains(Model, UCSB') and AvailableMemory le 5000`

Answer: D

NEW QUESTION 38

Which two types of storage are supported for app hosting on a Cisco Catalyst 9000 Series Switch? (Choose two.)

- A. external USB storage
- B. internal SSD
- C. CD-ROM
- D. SD-card
- E. bootflash

Answer: AB

NEW QUESTION 39

```
import http.client

conn = http.client.HTTPSConnection("dnac.cisco.com")

headers = {
    '__runsync': "true",
    '__timeout': "30",
    '__persistbapioutput': "true",
}

conn.request("□", "/dna/intent/api/v1/□?timestamp=10000", headers=headers)

res = conn.getresponse()
data = res.read()

print(data.decode("utf-8"))
```

Refer to the exhibit. Which configuration of method and parameter retrieves the health of a laptop connected to the network from Cisco DNA Center?

- A. PUT; network-health;
- B. GET; client-health;
- C. GET; network-device;
- D. POST; network-device;

Answer: C

NEW QUESTION 43

```
headers = ( )
try:
    response = requests.get("https://sandboxdnac.cisco.com/dna/intent/api/v1/wireless/profile",
        headers=headers, verify=False)
except requests.exceptions.RequestException as cerror:
    print("Error processing request", cerror)
    sys.exit(1)
```

Refer to the exhibit. Which code snippet is required in the headers to successfully authorize wireless information from Cisco DNA Center?

- A. headers = {'X-auth-token': 'fa8426a0-8eaf-4d22-8e13-7c1b16a9370c'} B.headers = {'Authorization': 'Basic YWRtaW46R3JhcGV2aW5IMQ=='}
- B. headers = {'Authorization': 'Bearer ASDNFALKJER23412RKDALSNKF'}
- C. headers = {'Content-type': 'application/json'}

Answer: A

NEW QUESTION 47

An application has initiated an OAuth authorization code grant flow to get access to an API resource on behalf of an end user.

Which two parameters are specified in the HTTP request coming back to the application as the end user grants access? (Choose two.)

- A. access token and a refresh token with respective expiration times to access the API resource
- B. access token and expiration time to access the API resource
- C. redirect URI a panel that shows the list of permissions to grant
- D. code that can be exchanged for an access token
- E. state can be used for correlation and security checks

Answer: AB

NEW QUESTION 49

A web application is susceptible to cross-site scripting. Which two methods allow this issue to be mitigated? (Choose two.)

- A. Use only drop downs.
- B. Limit user input to acceptable characters.
- C. Encrypt user input on the client side.
- D. Use AES encryption to secure the script.
- E. Remove all HTML/XML tags from user input.

Answer: BD

NEW QUESTION 52

Which tow actions must be taken when an observable microservice application is developed? (Choose two.)

- A. Know the state of a single instance of a single service.
- B. Place "try/except" statement in code.
- C. Place log statements in the code.
- D. Use distributed tracing techniques.
- E. Deploy microservice to multiple datacenters.

Answer: BC

NEW QUESTION 55

Which two countermeasures help reduce the risk of playback attacks? (Choose two.)

- A. Store data in a NoSQL database.
- B. Implement message authentication (HMAC).
- C. Enable end-to-end encryption.
- D. Remove stack traces from errors.
- E. Use short-lived access tokens.

Answer: BE

NEW QUESTION 58

Which type of file is created from issued intermediate, root, and primary certificates for SSL installation on a server?

- A. DER
- B. CSR
- C. PEM
- D. CRT

Answer: C

NEW QUESTION 60

```
FROM alpine:3.7
RUN apk add --no-cache bash
```

Refer to the exhibit. Which additional line results in the output of Test 1 upon execution of the `docker run --rm devnet 1` command in a Dockerfile with this content?

- A. CMD ["/bin/echo", "Test"]
- B. RUN ["/bin/echo", "Test"]
- C. ENTRYPOINT ["/bin/echo", "Test"]
- D. CMD ["/bin/echo Test"]

Answer: A

NEW QUESTION 61

Which two techniques protect against injection attacks? (Choose two.)

- A. input validation
- B. trim whitespace
- C. limit text areas to 255 characters
- D. string escaping of user free text and data entry
- E. only use dropdown, checkbox, and radio button fields

Answer: AE

NEW QUESTION 63

Which two strategies are used to protect personally identifiable information? (Choose two.)

- A. Encrypt data in transit.
- B. Encrypt hash values of data.
- C. Encrypt data at rest.
- D. Only hash usernames and passwords for efficient lookup.
- E. Only encrypt usernames and passwords for efficient lookup.

Answer: AB

NEW QUESTION 68

```
open_file = open("text_file.txt", "r")
read_file = open_file.read()
print(read_file)
```

Refer to the exhibit. a developer created the code, but it fails to execute. Which code snippet helps to identify the issue?

- A.

```
try:
    open_file = open("text_file.txt", "r")
    read_file = open_file.read()
    print(read_file)
except:
    print("File not there")
```
- B.

- ```
try:
 print("File not there")
except:
 open_file = open("text_file.txt", "r")
 read_file = open_file.read()
 print(read_file)
```
- C. 

```
try:
 open_file = open("text_file.txt", "r")
 read_file = open_file.read()
 print(read_file)
except:
 print("File not there")
catch:
 error(read_file)
```
- D. 

```
open_file = open("text_file.txt", "r")
read_file = open_file.read()
try:
 print(read_file)
except:
 print("File not there")
```

**Answer:** C

#### NEW QUESTION 72

Which HTTP status code indicates that a client application is experiencing intentional rate limiting by the server?

- A. 202
- B. 401
- C. 429
- D. 503

**Answer:** C

#### NEW QUESTION 76

Which database type should be used to store data received from model- driven telemetry?

- A. BigQuery database
- B. Time series database
- C. NoSQL database
- D. PostgreSQL database

**Answer:** B

#### NEW QUESTION 80

A heterogeneous network of vendors and device types needs automating for better efficiency and to enable future automated testing. The network consists of switches, routers, firewalls and load balancers from different vendors, however they all support the NETCONF/RESTCONF configuration standards and the YAML models with every feature the business requires. The business is looking for a buy versus build solution because they cannot dedicate engineering resources, and they need configuration diff and rollback functionality from day 1.

Which configuration management for automation tooling is needed for this solution?

- A. Ansible
- B. Ansible and Terraform
- C. NSO
- D. Terraform
- E. Ansible and NSO

**Answer:** E

#### NEW QUESTION 85

```
- name: Configure Interfaces
 with_items: "{{interfaces}}"
 netconf_config:
 <<: *host_info
 xml: |
 <config>
 <interfaces xmlns="urn:ietf:params:xml:ns:yang:ietf-interfaces">
 <interface>
 <name>{{item.interface_type}}{{item.interface_id}}</name>
 <description>{{item.description}}</description>
 <type xmlns:ianaift="urn:ietf:params:xml:ns:yang:iana-if-type">ianaift:ethernetCsmacd</type>
 <enabled>true</enabled>
 <ipv4 xmlns="urn:ietf:params:xml:ns:yang:ietf-ip">
 <address>
 <ip>{{item.ip_address}}</ip>
 <netmask>{{item.subnet_mask}}</netmask>
 </address>
 </ipv4>
 </interface>
 </interfaces>
 </config>
```

Refer to the exhibit. The Ansible playbook is using the netconf\_module to configure an interface using a YANG model. As part of this workflow, which YANG models augment the interface?

- A. ietf-interfaces and ietf-ip
- B. iana-if-type and ietf-interfaces
- C. ietf-ip and openconfig-interface
- D. ietf-ip and iana-if-type

**Answer: B**

#### NEW QUESTION 90

```
name: VRFs
ios_vrf:
 vrf: "{{ local_vrf }}"
 state: present
 purge: yes
```

Refer to the exhibit. The YAML represented is using the ios\_vrf module. As part of the Ansible playbook workflow, what is the result when this task is run?

- A. VRFs not defined in the host\_vars file are removed from the device.
- B. VRFs not defined in the host\_vars file are added to the device, and any other VRFs on the device remain.
- C. VRFs defined in the host\_vars file are removed from the device.
- D. VRFs are added to the device from the host\_vars file, and any other VRFs on the device are removed.

**Answer: D**

#### NEW QUESTION 92

Application sometimes store configuration as constants in the code, which is a violation of strict separation of configuration from code. Where should application configuration be stored?

- A. environment variables
- B. YAML files
- C. Python libraries
- D. Dockerfiles
- E. INI files

**Answer: B**

#### NEW QUESTION 95

.....

## Thank You for Trying Our Product

\* 100% Pass or Money Back

All our products come with a 90-day Money Back Guarantee.

\* One year free update

You can enjoy free update one year. 24x7 online support.

\* Trusted by Millions

We currently serve more than 30,000,000 customers.

\* Shop Securely

All transactions are protected by VeriSign!

**100% Pass Your 350-901 Exam with Our Prep Materials Via below:**

<https://www.certleader.com/350-901-dumps.html>