

1z0-1016 Dumps

Oracle Product Hub Cloud 2018? Implementation Essentials

<https://www.certleader.com/1z0-1016-dumps.html>



NEW QUESTION 1

How do you enable or set up Audit Trail for Product Data Hub object attribute?

- A. No enabling required, Audit Trail is automatically enabled in Product Data Hub.
- B. Using Setup and Maintenance, search for Manage Audit Trail task, Select Oracle Cloud Application, Configure Business Object Attributes for Product Management application
- C. From Product Hub Main page, select Task Icon, Audit Trail, Configure Business Object Attributes for Product Management application
- D. Using Setup and Maintenance, search for Manage Audit Policies task, Select Oracle Cloud Application, Configure Business Object Attributes for Product Management application
- E. From Main Navigator, Choose Audit Trail, Oracle Cloud Application, Configure Business Object Attributes for Product Management application

Answer: B

NEW QUESTION 2

A buyer has requested Product Data Steward to create a laptop item with structure in Product Hub. Product Data Steward is unable to define the structure. Why?

- A. The Product Development option under Product Management offering is not provisioned.
- B. The Item and Catalog Management and Structures functional areas are not enabled.
- C. The Product Management offering is not provisioned and Define Product Source System feature is not enabled.
- D. The Define Data Quality for Products feature is not provisioned.

Answer: C

NEW QUESTION 3

In your Product Hub Portal implementation, four suppliers A, B, C, and D are providing data for the same Motor. The motor efficiency is a critical attribute and the blending rule setup is as follows:

Priority Spoke

- 1. Supplier A
- 2. Supplier B
- 3. Supplier C
- 4. Supplier D

The efficiency value provided by Supplier A is 93% while Suppliers B and C both provided the value as 95% and Supplier D provides it as 91%.

What will the efficiency value be for the motor in the Product Hub?

- A. Average of the four values provided by suppliers
- B. 95%, since the majority of the suppliers are providing it
- C. 93%
- D. 91%

Answer: B

NEW QUESTION 4

Your customer wants to add a new supplier to Oracle Product Hub Cloud. What steps must you complete in order to do so?

- A. Create Supplier, Create Address, Create Site, Create Site Assignments, Create Suppliers Site Contact
- B. Create Supplier, Create Site, Create Site Assignments, Create Address, Create Suppliers Site Contact
- C. Create Address, Create Supplier, Create Site Assignments, Create Site, Create Suppliers Site Contact
- D. Create Address, Create Supplier, Create Site, Create Site Assignments, Create Suppliers Site Contact
- E. Create Supplier, Create Address, Create Site Assignments, Create Site, Create Suppliers Site Contact

Answer: A

Explanation:

Reference <https://www.google.com/url?sa=t&rct=j&q=&esrc=s&source=web&cd=2&cad=rja&uact=8&ved=2ahUKEwjZ>

NEW QUESTION 5

One of your customer employees is assigned as an application administrator. What three functions can the employee perform using Security Console?

- A. Assign Roles to users
- B. Create customers
- C. Create Items
- D. Perform role analysis
- E. Manage users

Answer: BCD

NEW QUESTION 6

Which statement is true about publishing items in Oracle Product Hub Cloud?

- A. All newly created items are published, irrespective of the Publication Criteria.
- B. All items that meet the last Publication Date or Criteria Date, irrespective of the Publication Criteria, are published.
- C. All items that meet the last Publication Date or Criteria Date and the Publication Criteria are published.
- D. All items that meet the Publication Criteria, irrespective of the last Publication Date or Criteria Date, are published.

Answer: B

Explanation:

Reference https://docs.oracle.com/cloud/farel12/scmcs_gs/FAPIM/FAPIM1176849.htm#FAPIM1176849

NEW QUESTION 7

A customer has provided the following item information from their legacy system:

ITEM	UNIT OF MEASURE	CONVERSION FACTOR
Egg	Dozen	1 Dozen = 12 Each
Water Bottles	Box	1 Box = 24 Each
Gasoline	Barrel	1 Barrel = 158.76 Litres
Time	Minute	1 Minute = 60 Seconds

Identify two valid setup statements in Oracle Product Hub Cloud that maps this data.

- A. The Units of Measure Dozen and Box should be grouped under the Unit of Measure class Quality
- B. The base Unit of Measure must be used to perform conversions among the Units of Measure in the same class.
- C. The Unit of Measure class Quantity can have Each and Box as the base Unit of Measure.
- D. The Units of Measure Barrel and Minute should be grouped under the Unit of Measure class Volume.

Answer: BC

NEW QUESTION 8

On the Edit Rule Set page, the details of a rule are as shown in the following table. What is the expected behavior of the rule?

Field (in Rule)	Value
Name	MyItemRule 1
Return Type	Item Description
Primary If Expression	True
Secondary If Expression	True
Return Value	[Item].[Main].[ITEM_TYPE]+[item].[Main].[LONG_DESCRIPTION]

- A. Assignment rule: Concatenates the long description with the item type attribute
- B. Assignment rule: Concatenates the item type with the long description attribute
- C. Composite rule: Validates the item description, and then assigns the concatenated value of the item type and long description
- D. Item Description Rule: Auto-generates the item description by concatenating the item type and long description attributes
- E. Validation rule: Validates the item type and the long description

Answer: C

NEW QUESTION 9

Your customer has been using Product Hub and has decided to extend it's manufacturing operations to a new facility. They want to transfer the manufacturing of some of their existing items to this new facility.

Identify the two required setups in Product Hub to support this change.

- A. Define Units of Measures
- B. Define Item Class Security
- C. Define Item or Inventory Organization
- D. Define Lifecycle Phases and Assign to Item Class
- E. Define Catalogs
- F. Define Key Flexfield for Categories

Answer: AE

NEW QUESTION 10

When creating style and SKU items, your customer wants to manage some attributes at both the style and SKU levels, and manage the remaining attributes only at the style level.

Identify the two setups that are required in the attribute group definitions in order to fulfill this requirement.

- A. For attribute groups to be managed both at the style and SKU levels, set the Style to SKU field to Inherited in the context usage.
- B. For attribute groups to be managed both at the style level, set the Style to SKU field to Defaulted in the context usage.
- C. For attribute groups to be managed both at the style and SKU levels, set the Style to SKU field to Defaulted in the context usage.
- D. For attribute groups to be managed only at the style level, set the Style to SKU field to Inherited in the context usage.
- E. For attribute groups to be managed only at the style level, set the Style to SKU field to None in the context usage.

Answer: CD

NEW QUESTION 10

Which three trading partner types are valid for creating trading partner item relationships in Oracle Product Hub Cloud?

- A. Competitor
- B. Supplier Site
- C. GS1
- D. Customer
- E. Manufacturer

Answer: ADE

Explanation:

Reference

<https://docs.oracle.com/en/cloud/saas/supply-chain-management/r13-update17d/fapim/manage-product-and-serv>

NEW QUESTION 14

View the exhibit.

You have defined a validation rule to validate an item class change for an item with details as in the Exhibit.

Business Entity	Item
Rule Set Name	ValidateItemClass
Rule Set Type	Validation
Association Type	Item class
Association Name	TCParent
Rule Name	ValidateSourceTargetIC
Severity	Reject
If Expression	TO_ITEM_CLASS("TCCHLDVR") and FROM_ITEM_CLASS("TCParent")
Validation Condition	True
User Message	An item class cannot be changed from TCParent to TCCHLDVR

What is the expected behavior of the validation rule?

- A. Item class change from TCCHLDVR to TCParent is rejected and a request for a change order is made.
- B. Item class change from TCParent to TCCHLDVR is rejected.
- C. Item class change from TCParent to TCCHLDVR is rejected and a change request is triggered automatically.
- D. Item class change from TCParent to TCCHLDVR requires a change order.

Answer: B

NEW QUESTION 16

What are the two purposes of defining an Item Organization in Oracle Product Hub Cloud?

- A. It defines an item when inventory balances are not stored and inventory storage or inventory movement is not reflected in the Oracle Cloud Application.
- B. It provisions uses to perform sales order scheduling in legacy systems.
- C. It allows users to define Receiving Account information for the items defined in the organization.
- D. It can track purchase order receipts and returns performed in legacy systems.
- E. It can be used to define and maintain catalogs.

Answer: AC

Explanation:

Reference

<https://docs.oracle.com/en/cloud/saas/supply-chain-management/r13-update18a/faipr/define-item-organizations>.

NEW QUESTION 20

During the pre-configuration workshop, you had identified multiple custom attributes that must be created on items in Product Data Hub. Identify the option that outlines the correct steps needed to create Extensible Flexfield attributes.

- A. Create Value Set > Create Item Attribute Groups and Attributes > Deploy Flexfield > Assign Attribute Group to Item Class
- B. Create Value Set > Create Item Attribute Groups and Attributes > Assign Attribute Group to Item Class> Deploy Flexfield
- C. Assign Attribute Group to Item Class > Deploy Flexfield > Create Item Attribute Groups and Attributes> Create Value Set
- D. Create Value Set > Assign Attribute Group to Item Class > Create Item Attribute Groups and Attributes> Deploy Flexfield
- E. Deploy Flexfield > Create Item Attribute Groups and Attributes > Create Value Set > Assign Attribute Group to Item Class

Answer: A

NEW QUESTION 23

Which three statements are true in regard to Pack Types?

- A. They are used to describe Global Trade Item Number (GTIN) hierarchy level.
- B. Pack Types are defined as Catalogs in Product Hub
- C. Pack Types are defined as items in Product Hub.
- D. They are known as Trade Item Unit Descriptors (TIUD)
- E. Pack Types define each level in a packaging hierarchy.

Answer: ADE

Explanation:

Reference

<https://docs.oracle.com/en/cloud/saas/supply-chain-management/r13-update17d/fapim/manage-product-and-serv>

NEW QUESTION 25

You are creating an implementation project and are unable to select the Item and Catalog Management functional area within the Product Management module. What would you do to fix this?

- A. Setup and Maintenance > Product Hub offering > Change Configuration > Enable Item and Catalog Management for implementation
- B. Setup and Maintenance > Product Management Offering > Change Configuration > Enable Item and Catalog Management for implementation
- C. Setup and Maintenance > Manage Item and Catalogs > Enable Item and Catalog Management for implementation
- D. Setup and Maintenance > Product Management Offering > Setup > Enable Item and Catalog Management for implementation

Answer: B

NEW QUESTION 29

Transactional attributes are inherited across the item class hierarchy and the metadata is date-effective. Changes in the metadata are reflected immediately at the item level.

Which two statements are true regarding metadata?

- A. Only start dates for a transactional item attribute are entered by a user.
- B. Both start date and end date for a transactional item attribute are entered by a user.
- C. End date is calculated automatically based on the next date effective record.
- D. Multiple records with the same date range cannot exist if they belong to different domains.
- E. Any changes made at the parent item class for this transactional item attribute would get inherited.

Answer: AC

Explanation:

Reference https://docs.oracle.com/cd/E15586_01/fusionapps.11111/e20385/F445015AN28B50.htm

NEW QUESTION 34

Which three entities can be controlled through item batch options?

- A. New item requests
- B. Structures and packs
- C. Attachments
- D. Cross references and relationships
- E. Change orders

Answer: ABE

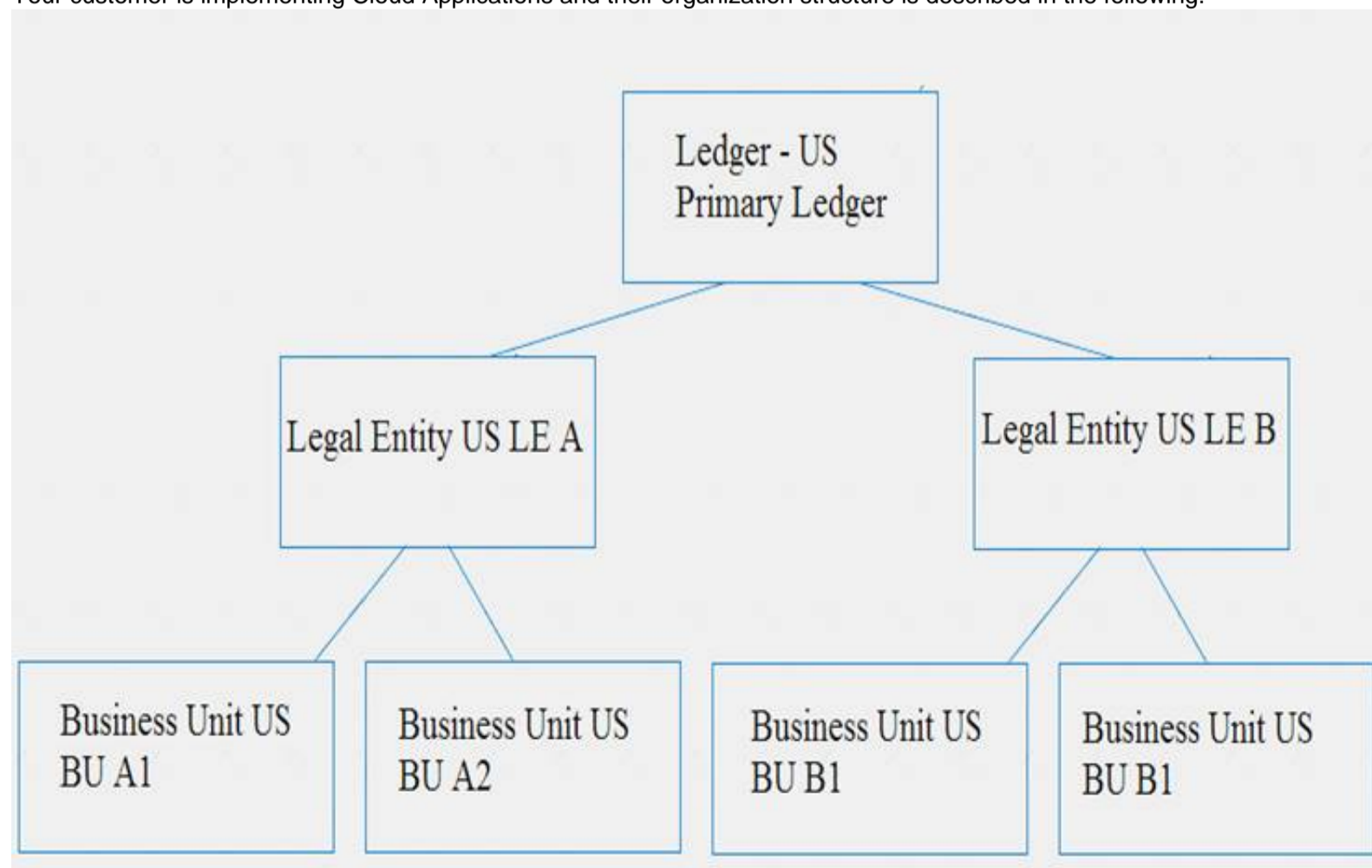
Explanation:

Reference

<https://docs.oracle.com/en/cloud/saas/supply-chain-management/r13-update17d/fapim/consolidate-product-and->

NEW QUESTION 39

Your customer is implementing Cloud Applications and their organization structure is described in the following:



They have completed development work and now want to move all configurations along with data to the next instance related to US LE B only, all Business Units perform Financial transactions.
How can this be achieved?

- A. While you export, set scope values as US LE A and US LE B, and while you import, set scope as Ledger, US Primary Ledge.
- B. While you export, select tasks related to US BU B1 and US BU B2 only.
- C. Export everything and while you import, select scope values for US LE A, US BU B1 and US BU B2.
- D. While you export, set scope values for US LE B and while you import, it will automatically consider data corresponding to Legal Entity US LE B.

Answer: A

NEW QUESTION 40

.....

Thank You for Trying Our Product

* 100% Pass or Money Back

All our products come with a 90-day Money Back Guarantee.

* One year free update

You can enjoy free update one year. 24x7 online support.

* Trusted by Millions

We currently serve more than 30,000,000 customers.

* Shop Securely

All transactions are protected by VeriSign!

100% Pass Your 1z0-1016 Exam with Our Prep Materials Via below:

<https://www.certleader.com/1z0-1016-dumps.html>